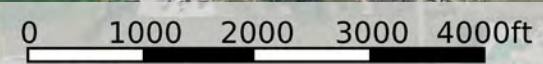
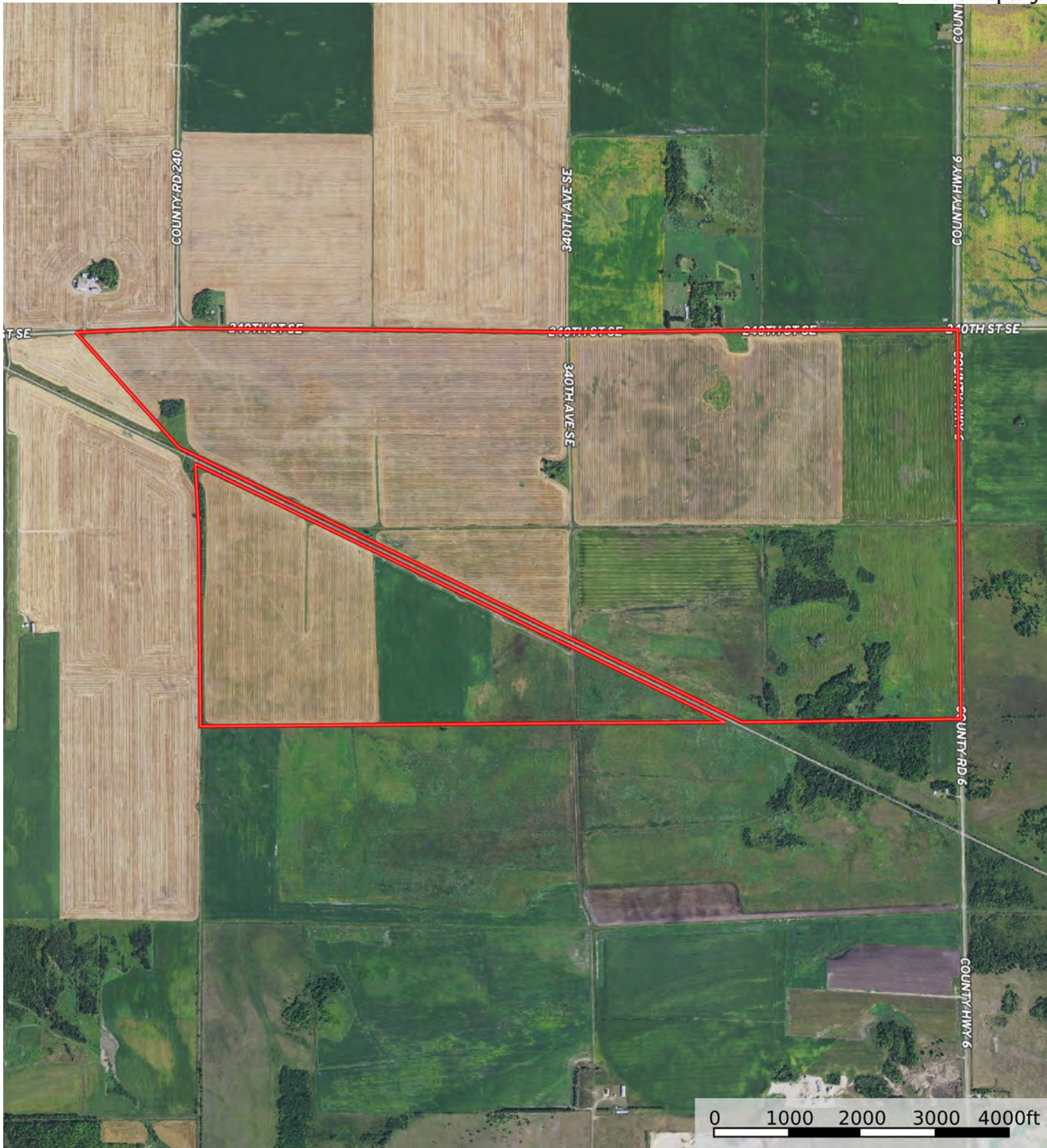


 Boundary



 Boundary

 All Polygons 1281.58 ac

SOIL CODE	SOIL DESCRIPTION	ACRES	%	CPI	NCCPI	CAP
I55A	Rosewood fine sandy loam, Aspen Parkland, 0 to 1 percent slopes	328.0 2	25.6	54	35	3w
I66A	Vallers loam, 0 to 2 percent slopes	285.0 3	22.24	90	67	2w
I65A	Ulen loamy fine sand, 0 to 2 percent slopes	166.3 2	12.98	55	34	3s
I70A	Strathcona fine sandy loam, 0 to 1 percent slopes	138.1 5	10.78	80	59	2w
I774A	Northwood muck, marl subsoil, 0 to 1 percent slopes	128.2 7	10.01	15	40	6w
I24A	Grimstad fine sandy loam, 0 to 2 percent slopes, aspen parkland	75.91	5.92	88	60	2s
I828A	Seelyeville muck, calcareous, 0 to 1 percent slopes	68.46	5.34	5	31	6w
I18A	Foldahl loamy fine sand, loamy till substratum, 0 to 3 percent slopes	25.97	2.03	65	47	3s
I56A	Rosewood-Venlo complex, 0 to 1 percent slopes	24.79	1.93	33	29	3w
I54A	Roliss loam, very poorly drained, 0 to 1 percent slopes	14.25	1.11	86	74	3w
I27A	Hamre muck, 0 to 1 percent slopes	13.32	1.04	15	48	4w
I15A	Hecla loamy fine sand, 0 to 2 percent slopes	6.19	0.48	50	41	4e
I11A	Deerwood muck, 0 to 1 percent slopes	3.83	0.3	15	21	6w
I26A	Hamerly loam, 0 to 2 percent slopes	3.07	0.24	89	71	2e
TOTALS		1281. 58(*)	100%	60.15	47.11	3.09

(*) Total acres may differ in the second decimal compared to the sum of each acreage soil. This is due to a round error because we only show the acres of each soil with two decimal.

 Boundary 991.09 ac

SOIL CODE	SOIL DESCRIPTION	ACRES	%	CPI	NCCPI	CAP
I55A	Rosewood fine sandy loam, Aspen Parkland, 0 to 1 percent slopes	302.3 7	30.51	54	35	3w
I70A	Strathcona fine sandy loam, 0 to 1 percent slopes	136.1 7	13.74	80	59	2w
I65A	Ulen loamy fine sand, 0 to 2 percent slopes	132.1 2	13.33	55	34	3s
I66A	Vallers loam, 0 to 2 percent slopes	128.8 2	13.0	90	67	2w
I774A	Northwood muck, marl subsoil, 0 to 1 percent slopes	125.1 9	12.63	15	40	6w
I24A	Grimstad fine sandy loam, 0 to 2 percent slopes, aspen parkland	75.91	7.66	88	60	2s
I18A	Foldahl loamy fine sand, loamy till substratum, 0 to 3 percent slopes	25.97	2.62	65	47	3s
I56A	Rosewood-Venlo complex, 0 to 1 percent slopes	24.79	2.5	33	29	3w
I828A	Seelyeville muck, calcareous, 0 to 1 percent slopes	15.62	1.58	5	31	6w

I54A	Roliss loam, very poorly drained, 0 to 1 percent slopes	14.25	1.44	86	74	3w
I11A	Deerwood muck, 0 to 1 percent slopes	3.82	0.39	15	21	6w
I26A	Hamerly loam, 0 to 2 percent slopes	3.07	0.31	89	71	2e
I15A	Hecla loamy fine sand, 0 to 2 percent slopes	2.99	0.3	50	41	4e
TOTALS		991.0 9(*)	100%	59.46	45.61	3.09

(*) Total acres may differ in the second decimal compared to the sum of each acreage soil. This is due to a round error because we only show the acres of each soil with two decimal.

|  Boundary 290.49 ac

SOIL CODE	SOIL DESCRIPTION	ACRES	%	CPI	NCCPI	CAP
I66A	Vallers loam, 0 to 2 percent slopes	156.2 1	53.77	90	67	2w
I828A	Seelyeville muck, calcareous, 0 to 1 percent slopes	52.84	18.19	5	31	6w
I65A	Ulen loamy fine sand, 0 to 2 percent slopes	34.2	11.77	55	34	3s
I55A	Rosewood fine sandy loam, Aspen Parkland, 0 to 1 percent slopes	25.65	8.83	54	35	3w
I27A	Hamre muck, 0 to 1 percent slopes	13.32	4.59	15	48	4w
I15A	Hecla loamy fine sand, 0 to 2 percent slopes	3.2	1.1	50	41	4e
I774A	Northwood muck, marl subsoil, 0 to 1 percent slopes	3.08	1.06	15	40	6w
I70A	Strathcona fine sandy loam, 0 to 1 percent slopes	1.98	0.68	80	59	2w
I11A	Deerwood muck, 0 to 1 percent slopes	0.01	0.0	15	21	6w
TOTALS		290.4 9(*)	100%	62.49	52.24	3.09









(*) Total acres may differ in the second decimal compared to the sum of each acreage soil. This is due to a round error because we only show the acres of each soil with two decimal.

Capability Legend

Increased Limitations and Hazards

Decreased Adaptability and Freedom of Choice Users

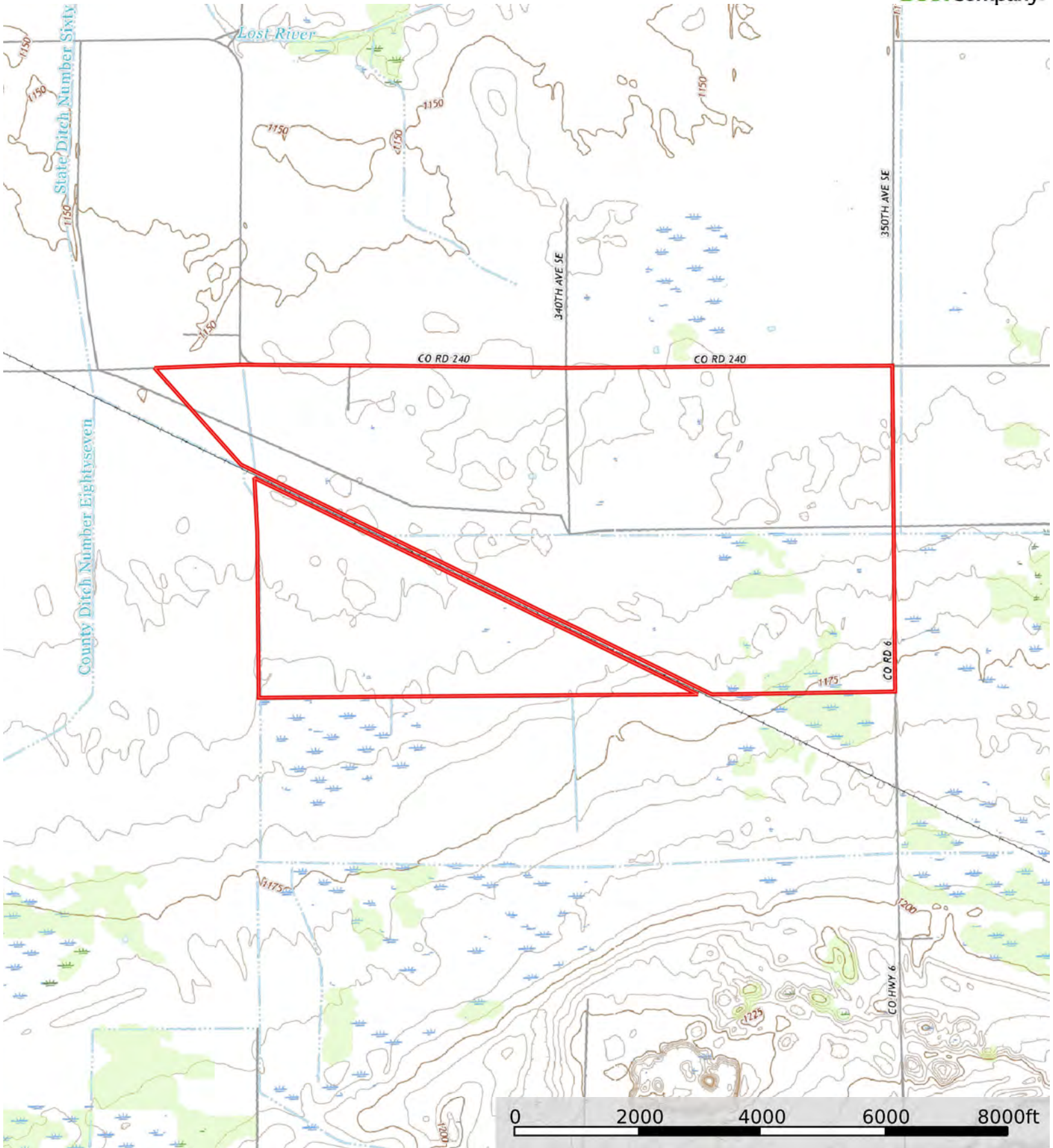
Land, Capability


								
	1	2	3	4	5	6	7	8
'Wild Life'	•	•	•	•	•	•	•	•
Forestry	•	•	•	•	•	•	•	
Limited	•	•	•	•	•	•	•	
Moderate	•	•	•	•	•	•		
Intense	•	•	•	•	•			
Limited	•	•	•	•				
Moderate	•	•	•					
Intense	•	•						
Very Intense	•							

Grazing Cultivation

(c) climatic limitations (e) susceptibility to erosion

(s) soil limitations within the rooting zone (w) excess of water



 Boundary