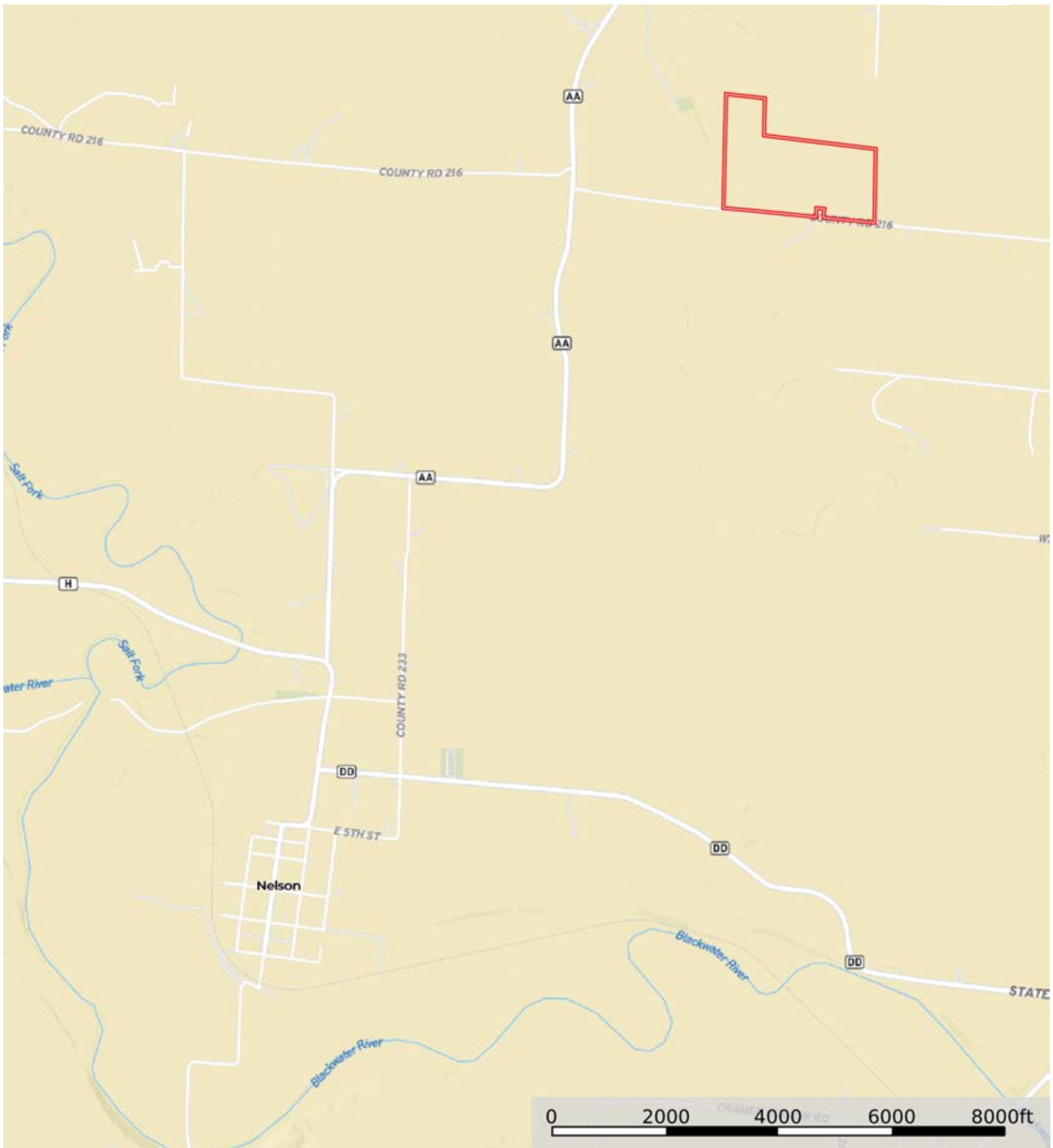



**A-21659**  
Saline County, Missouri, 90 AC +/-




 Boundary



 Boundary





 Boundary

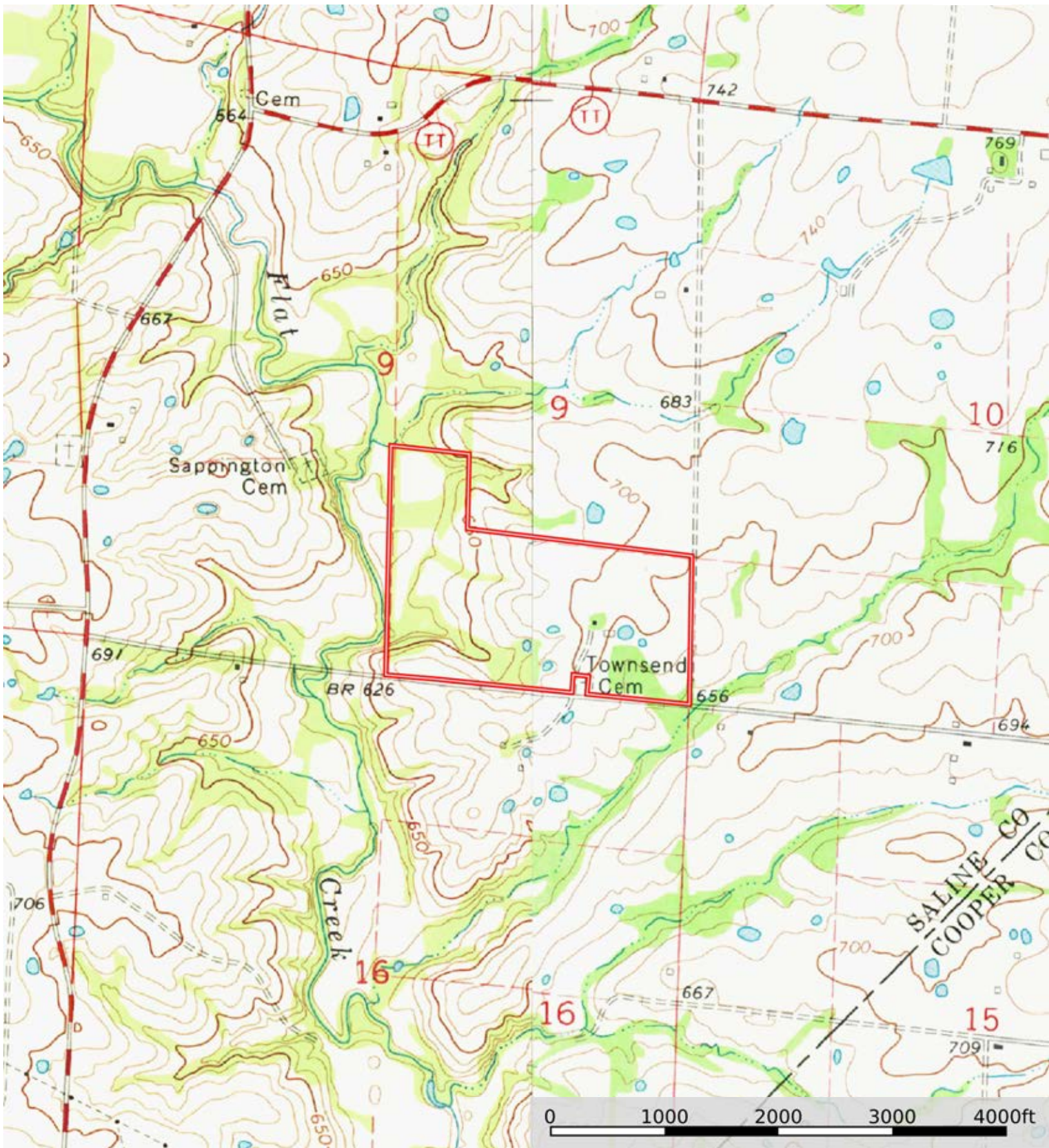
|  Boundary 92.09 ac


SOIL CODE	SOIL DESCRIPTION	ACRES	%	CPI	NCCPI	CAP
60028	Weller silt loam, 5 to 9 percent slopes, eroded	37.01	40.18	0	75	3e
10025	Higginsville silt loam, 2 to 5 percent slopes	21.98	23.87	0	84	2e
60053	Winfield silt loam, 3 to 9 percent slopes, eroded	11.44	12.42	0	75	3e
10132	Sibley silt loam, 2 to 5 percent slopes	8.42	9.14	0	92	2e
10103	McGirk silt loam, 2 to 5 percent slopes	7.31	7.94	0	75	2e
66004	Dockery silt loam, 0 to 2 percent slopes, frequently flooded	4.9	5.32	0	61	3w
10075	Leslie silt loam, 2 to 5 percent slopes	1.03	1.12	0	89	3e
TOTALS		92.09(*)	100%	-	78.11	2.59

(\*) Total acres may differ in the second decimal compared to the sum of each acreage soil. This is due to a round error because we only show the acres of each soil with two decimal.







 Boundary