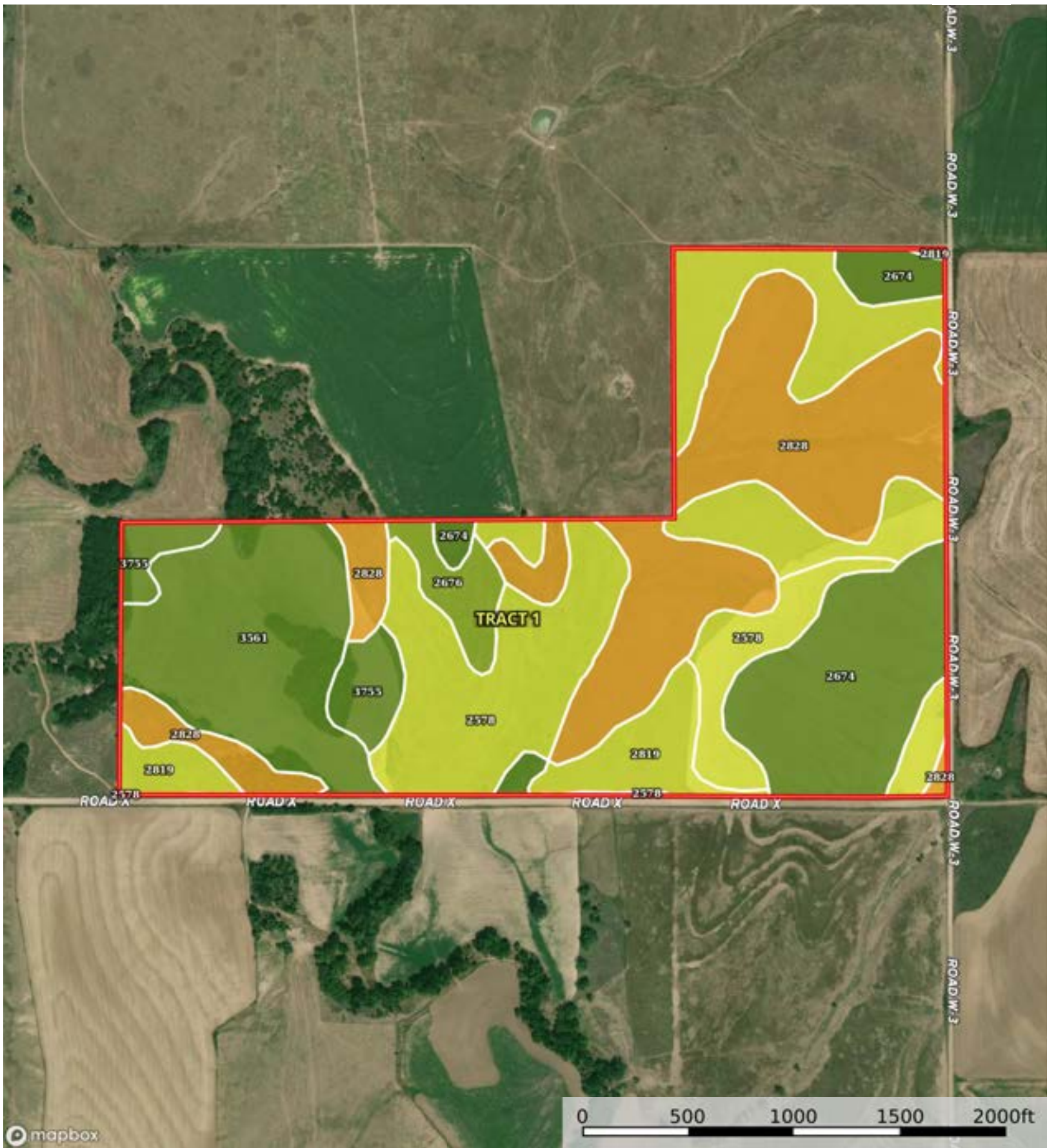


mapbox

Boundary



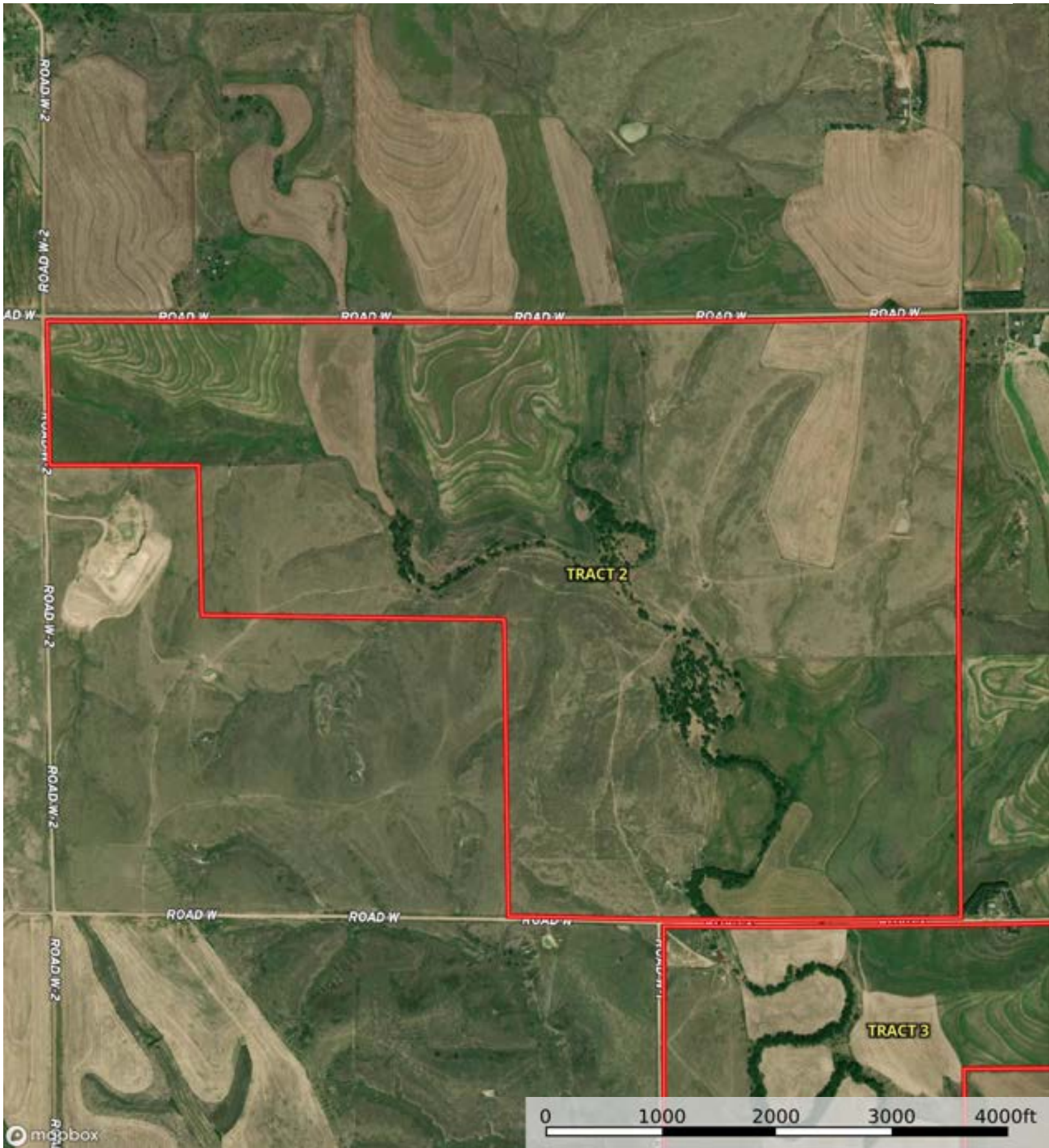
Boundary

Boundary 156.11 ac

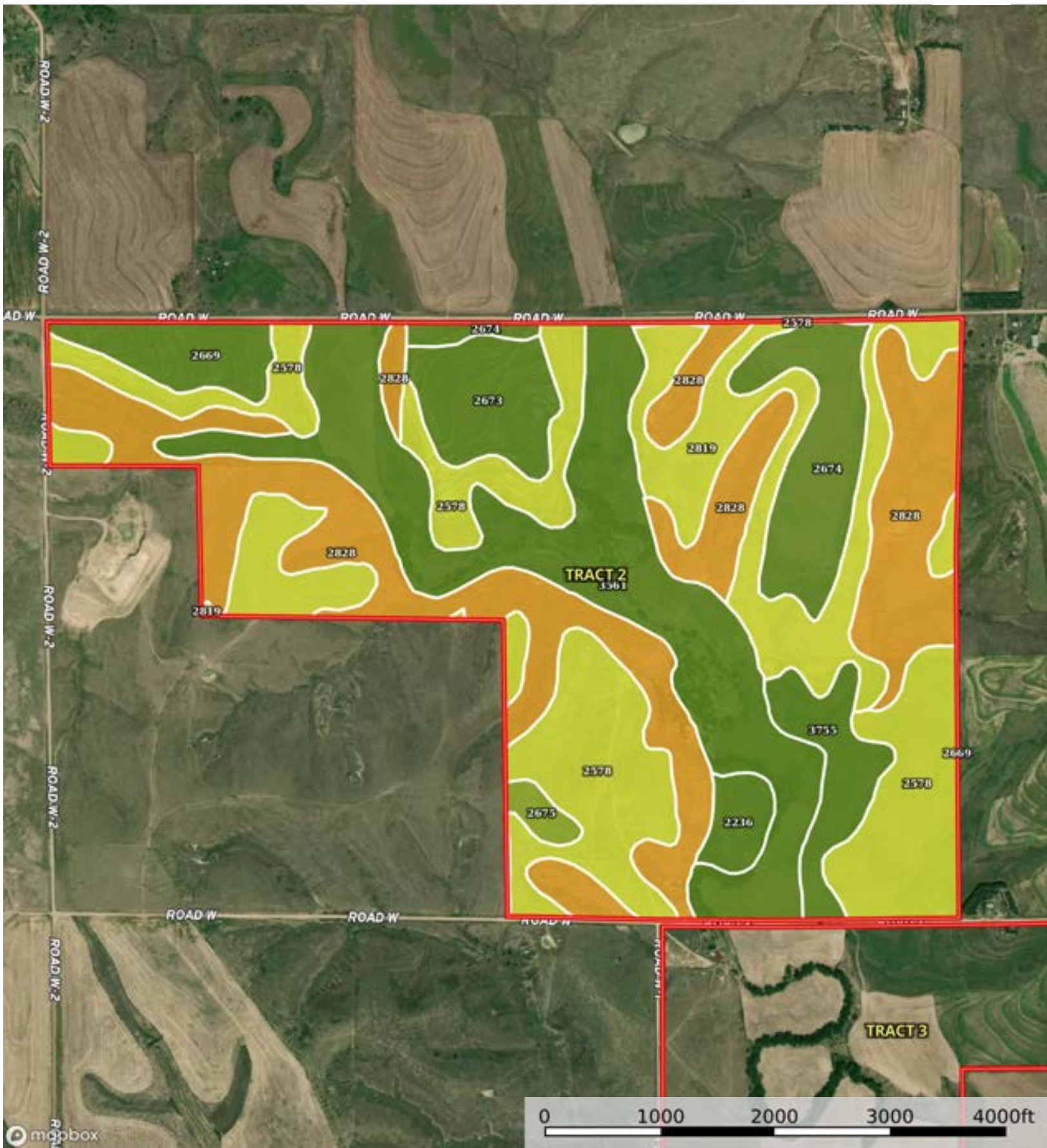
SOIL CODE	SOIL DESCRIPTION	ACRES	%	CPI	NCCPI	CAP
2828	Uly-Penden complex, 6 to 20 percent slopes	42.16	27.0	0	65	6e
2819	Uly silt loam, 6 to 11 percent slopes	30.34	19.43	0	76	4e
2578	Coly and Uly silt loams, 6 to 10 percent slopes, eroded	26.65	17.07	0	65	4e
3561	Hobbs silt loam, occasionally flooded	24.47	15.67	0	80	2w
2674	Holdrege silt loam, 1 to 3 percent slopes, plains and breaks	22.66	14.51	0	78	2e
3755	Hord silt loam, rarely flooded	5.72	3.66	0	79	2c
2676	Holdrege silt loam, 3 to 7 percent slopes, eroded, plains and breaks	4.11	2.63	0	70	3e
TOTALS		156.11(*)	100%	-	72.01	3.84

(\*) Total acres may differ in the second decimal compared to the sum of each acreage soil. This is due to a round error because we only show the acres of each soil with two decimal.





 Boundary



Boundary

|  Boundary 667.21 ac

SOIL CODE	SOIL DESCRIPTION	ACRES	%	CPI	NCCPI	CAP
2828	Uly-Penden complex, 6 to 20 percent slopes	172.7 9	25.9	0	65	6e
2578	Coly and Uly silt loams, 6 to 10 percent slopes, eroded	141.8 8	21.27	0	65	4e
3561	Hobbs silt loam, occasionally flooded	133.4 3	20.0	0	80	2w
2819	Uly silt loam, 6 to 11 percent slopes	87.48	13.11	0	76	4e
2674	Holdrege silt loam, 1 to 3 percent slopes, plains and breaks	43.49	6.52	0	78	2e
2673	Holdrege silt loam, 0 to 1 percent slopes, plains and breaks	29.03	4.35	0	79	2c
3755	Hord silt loam, rarely flooded	23.5	3.52	0	79	2c
2669	Holdrege silt loam, 1 to 3 percent slopes, eroded	20.82	3.12	0	70	2e
2236	Roxbury silt loam, occasionally flooded	9.81	1.47	0	79	2w
2675	Holdrege silt loam, 3 to 7 percent slopes, plains and breaks	4.98	0.75	0	77	3e
TOTALS		667.2 1(*)	100%	-	71.85	3.73

(\*) Total acres may differ in the second decimal compared to the sum of each acreage soil. This is due to a round error because we only show the acres of each soil with two decimal.



## Capability Legend

Increased Limitations and Hazards

Decreased Adaptability and Freedom of Choice Users

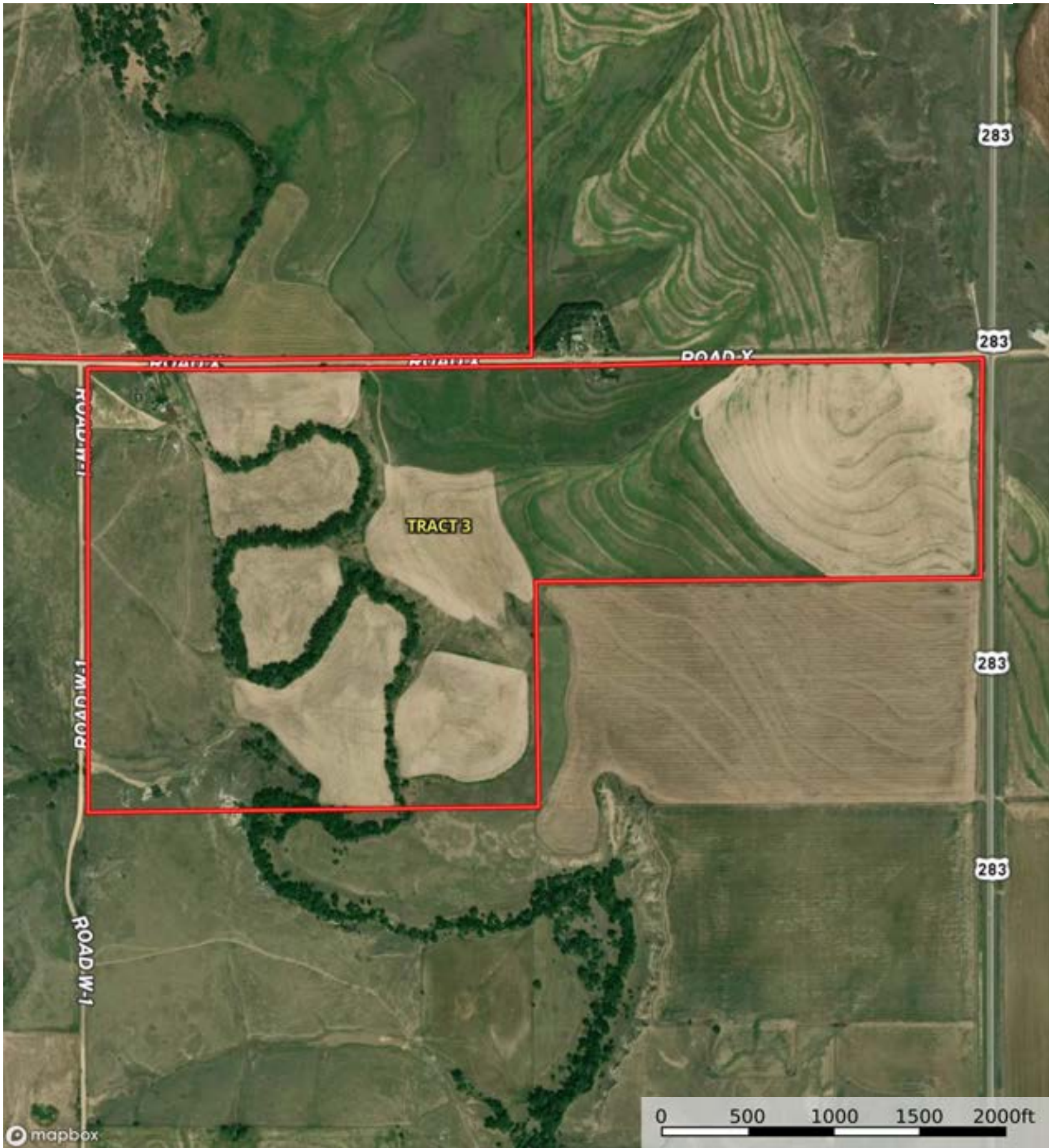
Land, Capability

								
	1	2	3	4	5	6	7	8
'Wild Life'	•	•	•	•	•	•	•	•
Forestry	•	•	•	•	•	•	•	
Limited	•	•	•	•	•	•	•	
Moderate	•	•	•	•	•	•		
Intense	•	•	•	•	•			
Limited	•	•	•	•				
Moderate	•	•	•					
Intense	•	•						
Very Intense	•							

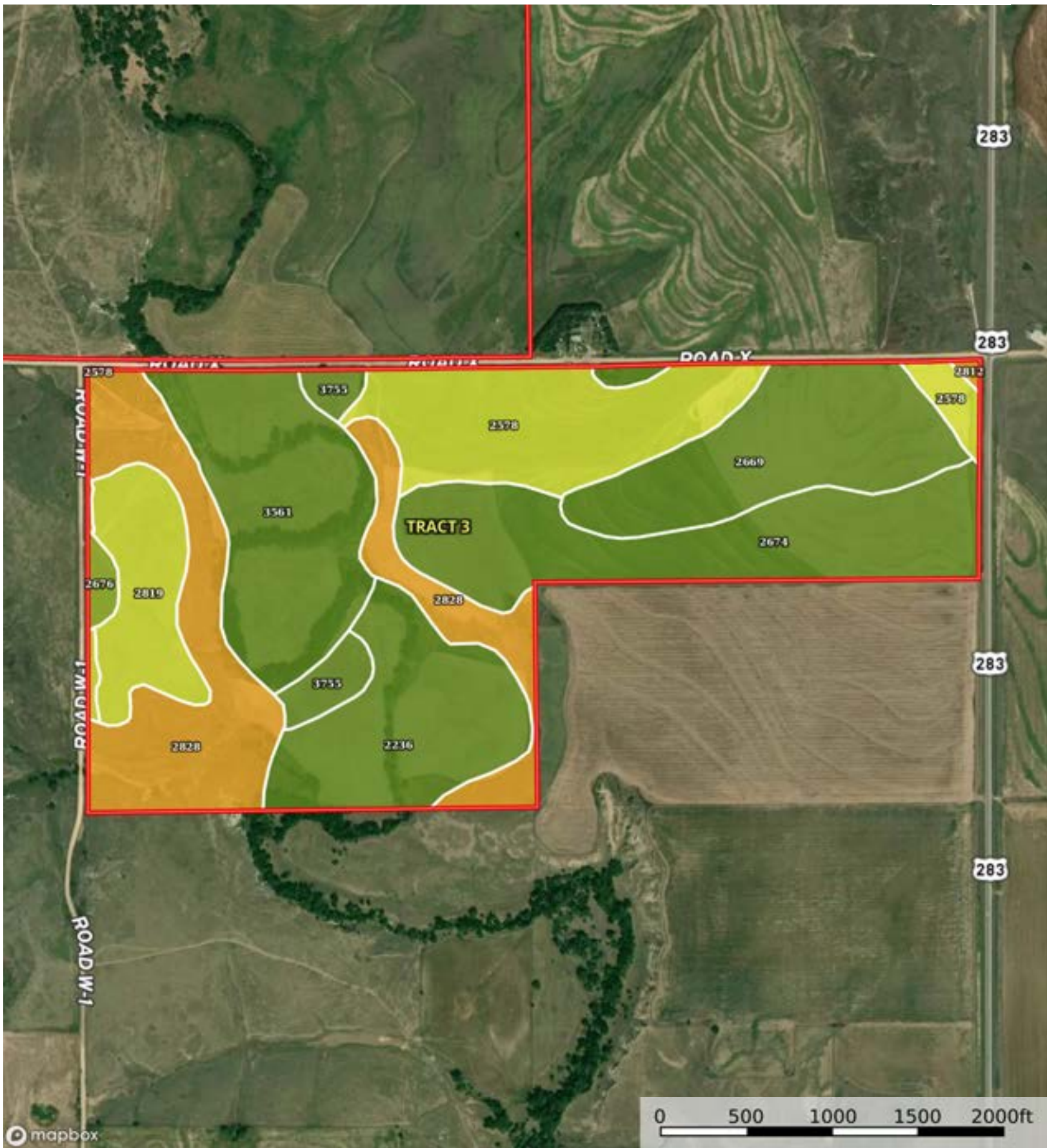
### Grazing Cultivation

(c) climatic limitations (e) susceptibility to erosion

(s) soil limitations within the rooting zone (w) excess of water



 Boundary



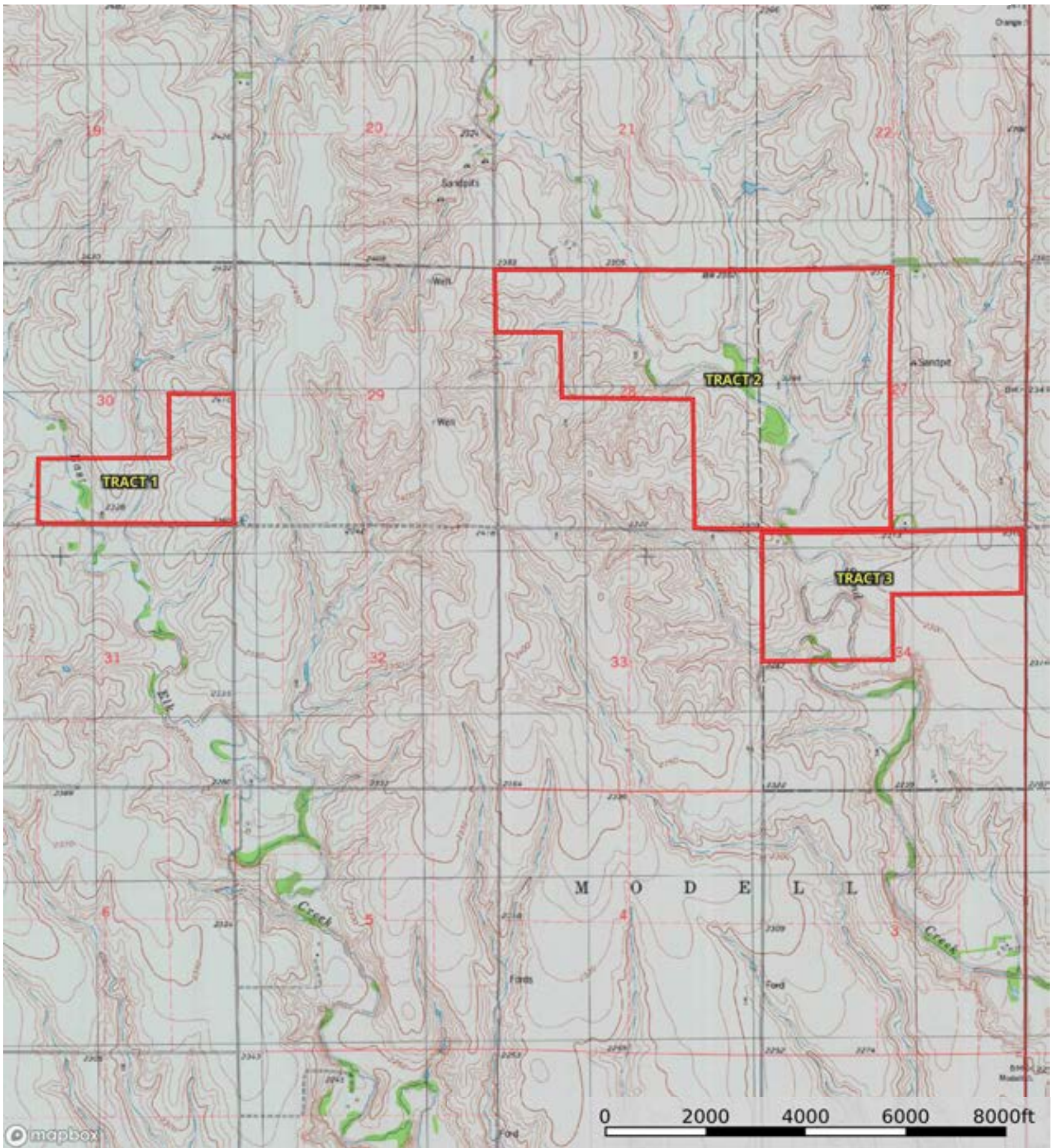
Boundary


Boundary 229.75 ac

SOIL CODE	SOIL DESCRIPTION	ACRES	%	CPI	NCCPI	CAP
2828	Uly-Penden complex, 6 to 20 percent slopes	42.32	18.42	0	65	6e
2674	Holdrege silt loam, 1 to 3 percent slopes, plains and breaks	37.74	16.43	0	78	2e
3561	Hobbs silt loam, occasionally flooded	34.69	15.1	0	80	2w
2578	Coly and Uly silt loams, 6 to 10 percent slopes, eroded	33.17	14.44	0	65	4e
2669	Holdrege silt loam, 1 to 3 percent slopes, eroded	30.71	13.37	0	70	2e
2236	Roxbury silt loam, occasionally flooded	27.9	12.14	0	79	2w
2819	Uly silt loam, 6 to 11 percent slopes	15.36	6.69	0	76	4e
3755	Hord silt loam, rarely flooded	5.63	2.45	0	79	2c
2676	Holdrege silt loam, 3 to 7 percent slopes, eroded, plains and breaks	1.79	0.78	0	70	3e
2812	Uly silt loam, 10 to 20 percent slopes	0.44	0.19	0	68	6e
TOTALS		229.75(*)	100%	-	72.89	3.17

(\*) Total acres may differ in the second decimal compared to the sum of each acreage soil. This is due to a round error because we only show the acres of each soil with two decimal.





 Boundary