


Boundary



Boundary

|  188.4 ac

| SOIL CODE | SOIL DESCRIPTION | ACRES | % | CSR2 | CPI | NCCPI | CAP |
|-----------|---|----------|-------|-------|-------|-------|------|
| 486 | Davis loam, 0 to 2 percent slopes, rarely flooded | 80.89 | 42.93 | - | 88 | 85 | 1 |
| 310B2 | Galva silty clay loam, 2 to 5 percent slopes, eroded | 20.16 | 10.7 | 90.0 | 0 | 70 | 2e |
| 27B | Terril loam, 2 to 5 percent slopes | 19.02 | 10.1 | 90.0 | 0 | 92 | 2e |
| 485 | Spillville loam, 0 to 2 percent slopes, occasionally flooded | 17.96 | 9.53 | 74.0 | 0 | 85 | 2w |
| 108 | Wadena loam, 24 to 32 inches to sand and gravel, 0 to 2 percent | 11.98 | 6.36 | 60.0 | 0 | 67 | 2s |
| 28B | Dickman sandy loam, 2 to 5 percent slopes | 10.14 | 5.38 | 25.0 | 0 | 65 | 3e |
| 801D2 | Bolan variant loam, 9 to 14 percent slopes, moderately eroded | 8.33 | 4.42 | 19.0 | 0 | 47 | 3e |
| 474C2 | Bolan loam, 5 to 9 percent slopes, moderately eroded | 8.24 | 4.37 | 49.0 | 0 | 70 | 3e |
| 5044 | Fluvaquents, 0 to 2 percent slopes | 4.29 | 2.28 | 5.0 | 0 | - | - |
| 878C2 | Ocheyedan loam, 5 to 9 percent slopes, moderately eroded | 3.77 | 2.0 | 77.0 | 0 | 77 | 3e |
| 28D2 | Dickman sandy loam, 9 to 14 percent slopes, moderately eroded | 2.97 | 1.58 | 9.0 | 0 | 57 | 4e |
| 474D2 | Bolan loam, 9 to 14 percent slopes, moderately eroded | 0.65 | 0.34 | 24.0 | 0 | 67 | 3e |
| TOTALS | | 188.4(*) | 100% | 35.79 | 37.78 | 76.94 | 1.76 |







(*) Total acres may differ in the second decimal compared to the sum of each acreage soil. This is due to a round error because we only show the acres of each soil with two decimal.

Capability Legend

Increased Limitations and Hazards

Decreased Adaptability and Freedom of Choice Users

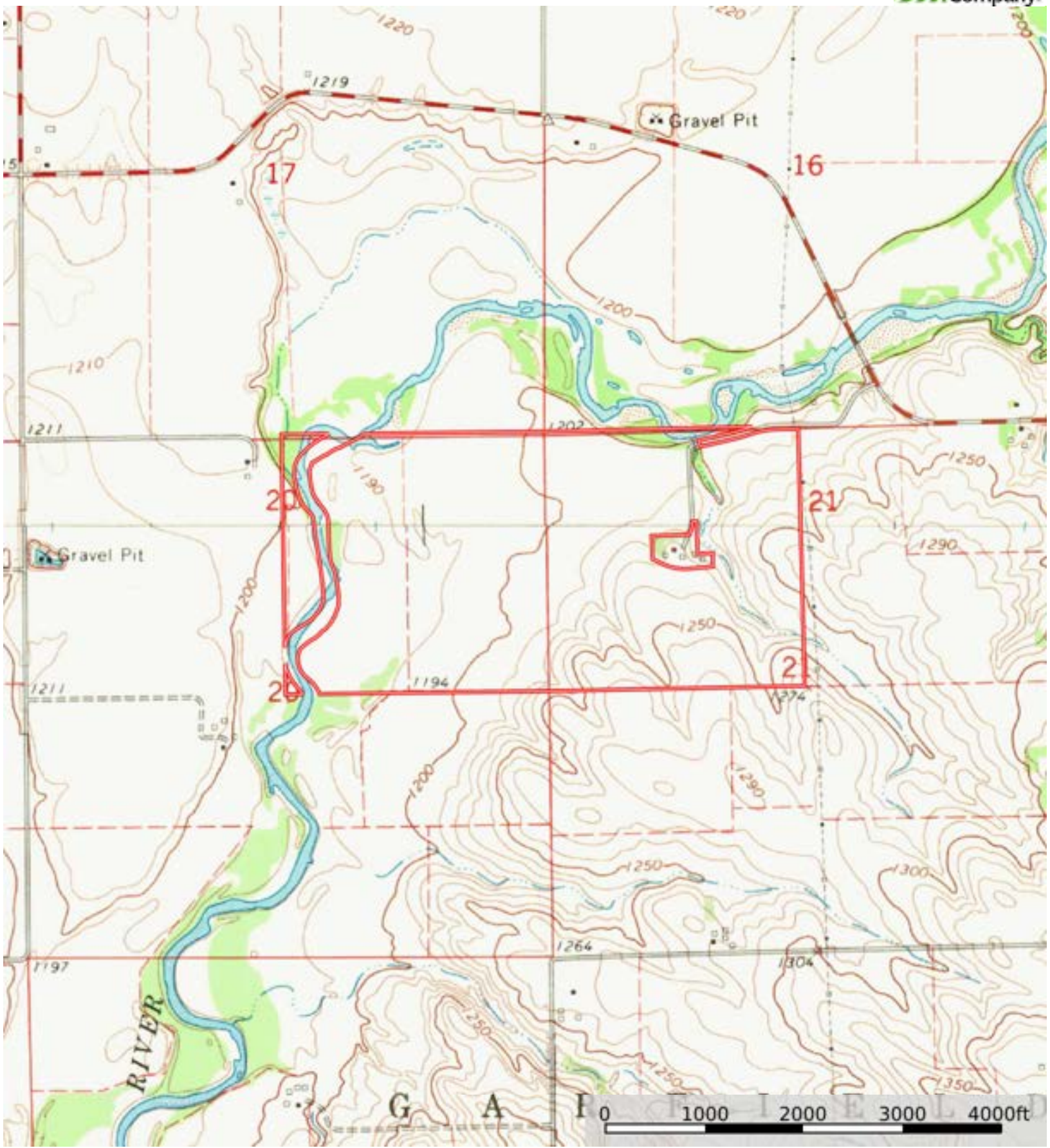
Land, Capability

| |  |  |  |  |  |  |  |  |
|--------------|---|---|---|---|--|---|---|---|
| | 1 | 2 | 3 | 4 | 5 | 6 | 7 | 8 |
| 'Wild Life' | • | • | • | • | • | • | • | • |
| Forestry | • | • | • | • | • | • | • | |
| Limited | • | • | • | • | • | • | • | |
| Moderate | • | • | • | • | • | • | | |
| Intense | • | • | • | • | • | | | |
| Limited | • | • | • | • | | | | |
| Moderate | • | • | • | | | | | |
| Intense | • | • | | | | | | |
| Very Intense | • | | | | | | | |

Grazing Cultivation

(c) climatic limitations (e) susceptibility to erosion

(s) soil limitations within the rooting zone (w) excess of water



Boundary