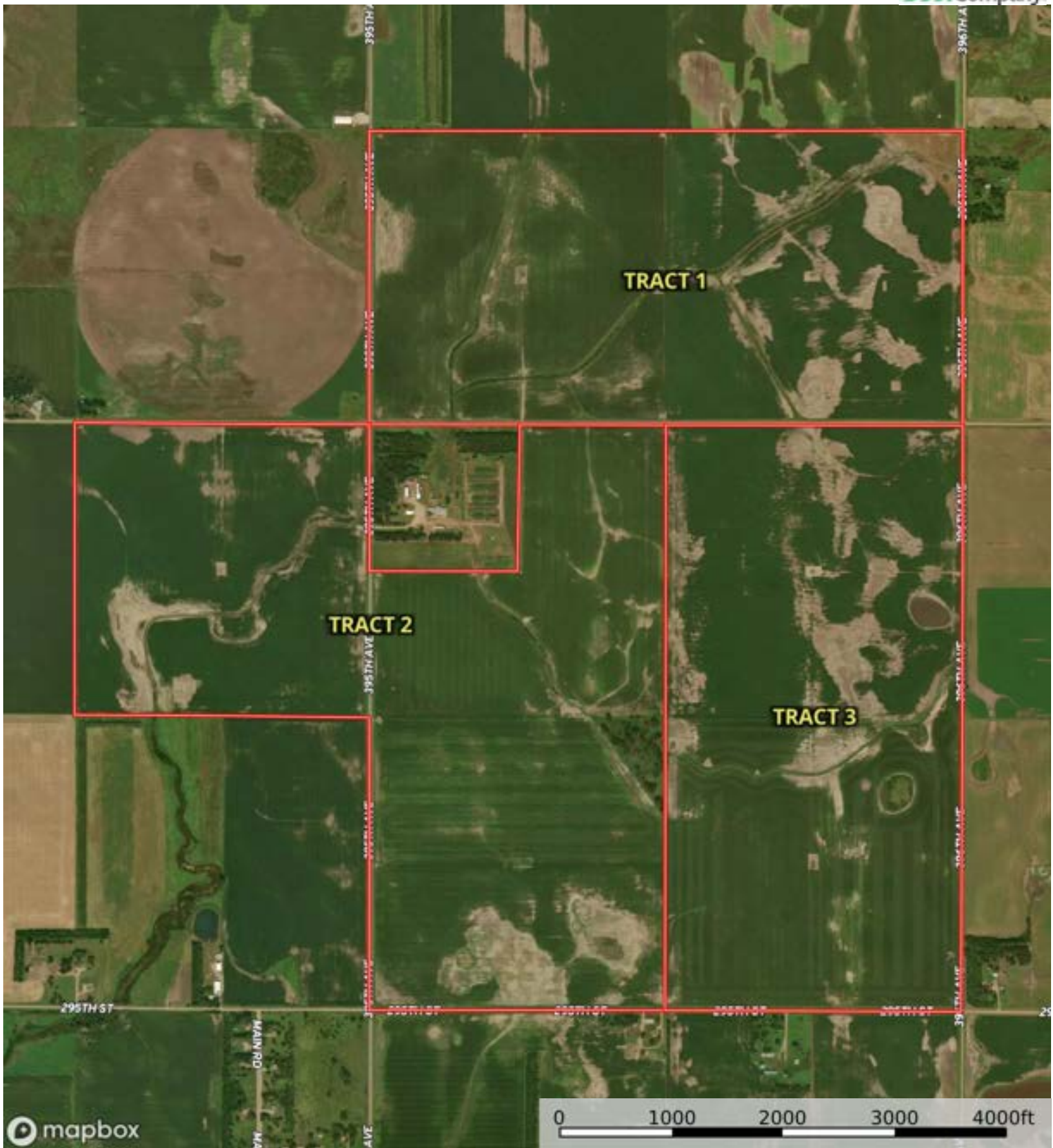


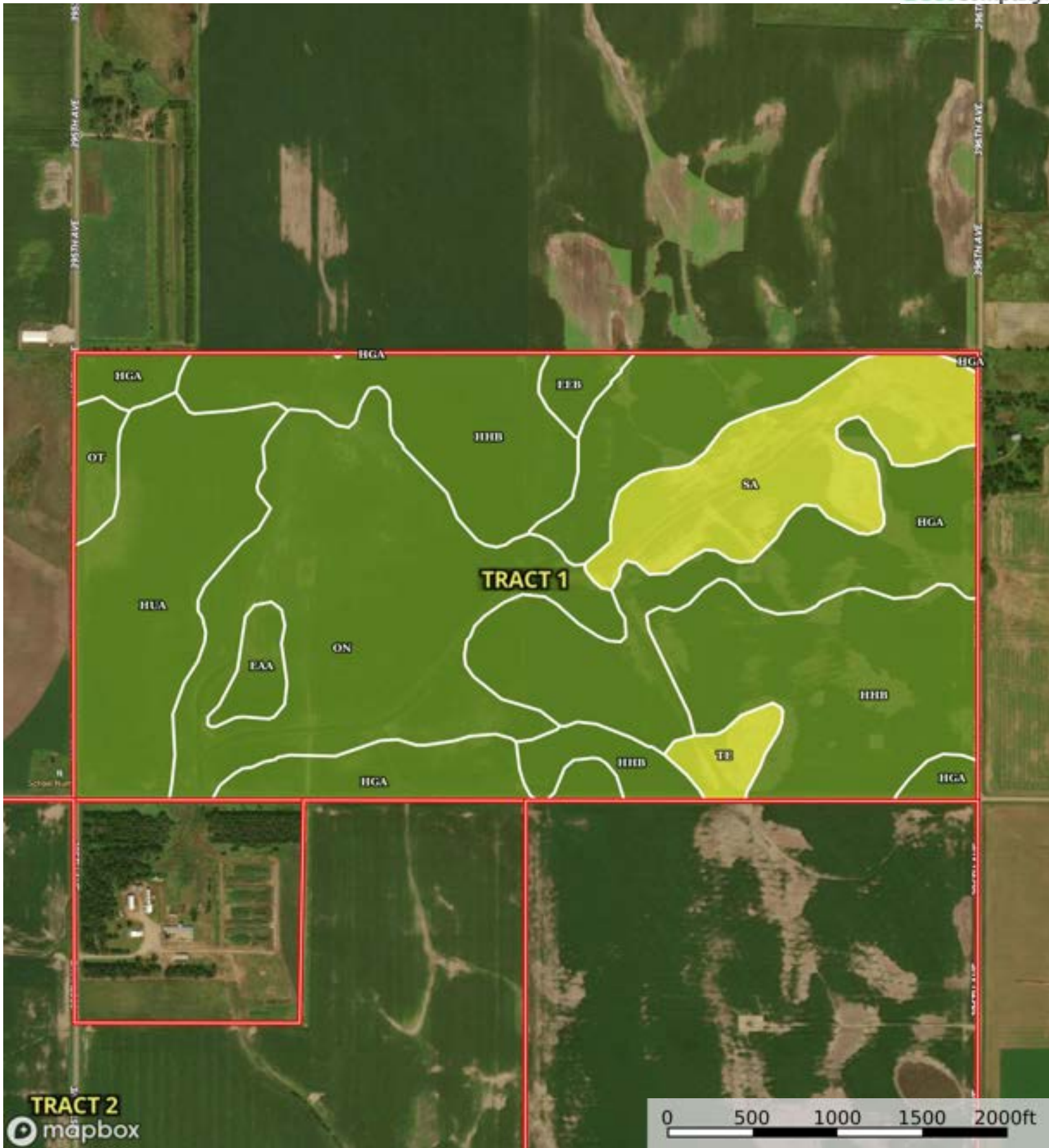
Boundary

L-2500134

Charles Mix County, South Dakota, 1080.23 AC +/-



Boundary



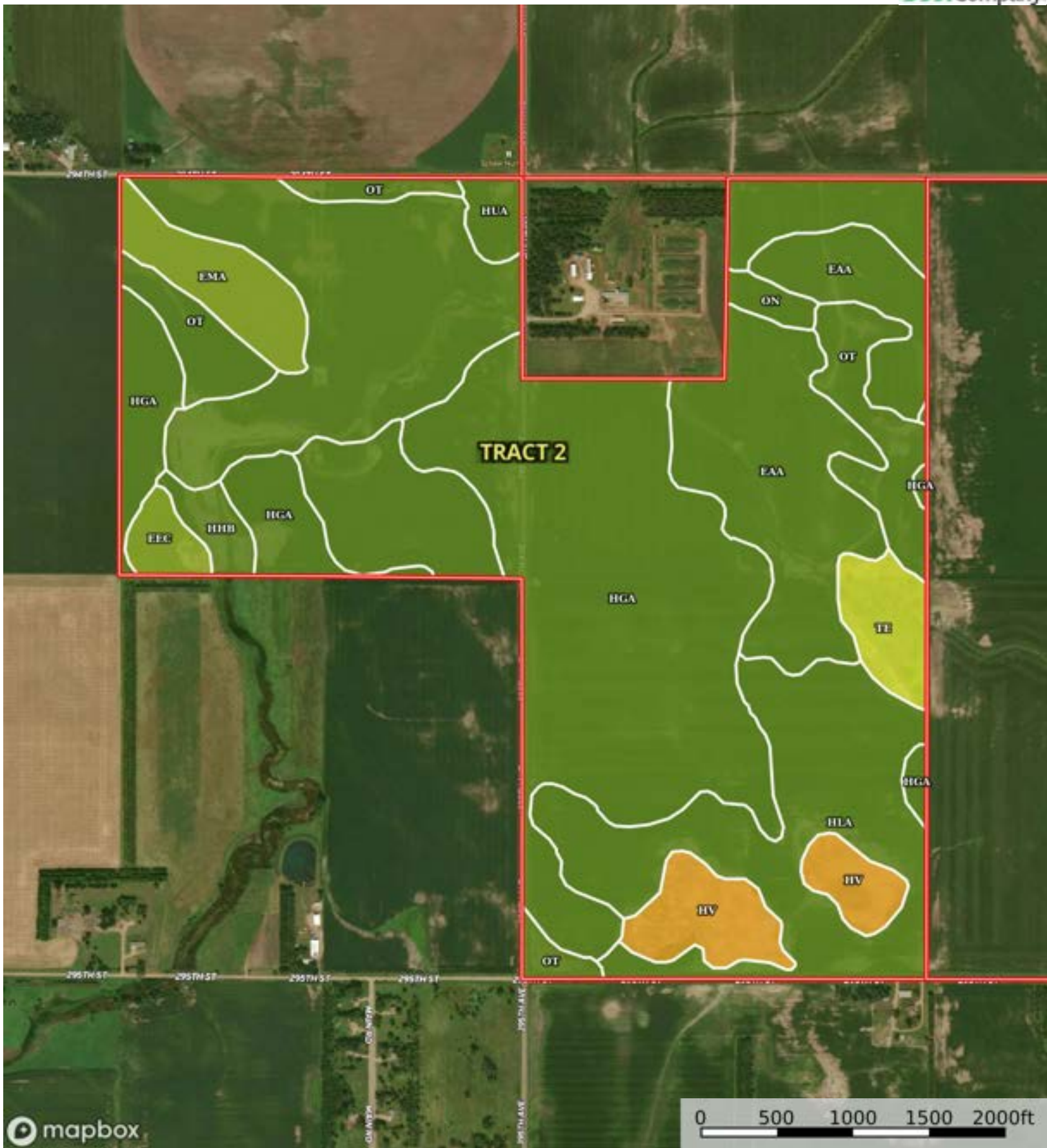
Boundary

| Boundary 324.27 ac

SOIL CODE	SOIL DESCRIPTION	ACRES	%	CPI	NCCPI	CAP
HgA	Highmore silt loam, 0 to 2 percent slopes	82.03	25.3	92	59	2c
HhB	Highmore silt loam, 2 to 6 percent slopes	79.44	24.5	91	58	2e
On	Mobridge silt loam, 0 to 2 percent slopes	70.32	21.69	94	65	2c
HuA	Houdek loam, 0 to 2 percent slopes	40.73	12.56	86	65	2c
Sa	Salmo silty clay loam	33.84	10.44	35	24	4w
Te	Tetonka silt loam, 0 to 1 percent slopes	5.03	1.55	57	23	4w
Ot	Onita-Tetonka silt loams	4.7	1.45	86	46	2c
EaA	Eakin silt loam, 0 to 2 percent slopes	4.52	1.39	88	67	2c
EeB	Eakin-Ethan complex, 2 to 6 percent slopes	3.66	1.13	76	64	2e
TOTALS		324.27(*)	100%	84.62	56.58	2.24

(\*) Total acres may differ in the second decimal compared to the sum of each acreage soil. This is due to a round error because we only show the acres of each soil with two decimal.





Boundary

| Boundary 441.19 ac

SOIL CODE	SOIL DESCRIPTION	ACRES	%	CPI	NCCPI	CAP
HgA	Highmore silt loam, 0 to 2 percent slopes	147.0 3	33.33	92	59	2c
On	Mobridge silt loam, 0 to 2 percent slopes	65.62	14.87	94	65	2c
HIA	Highmore-Walke silt loams, 0 to 2 percent slopes	60.81	13.78	86	64	2c
EaA	Eakin silt loam, 0 to 2 percent slopes	59.44	13.47	88	67	2c
Ot	Onita-Tetonka silt loams	30.3	6.87	86	46	2c
HhB	Highmore silt loam, 2 to 6 percent slopes	25.79	5.85	91	58	2e
Hv	Hoven silt loam, 0 to 1 percent slopes	18.4	4.17	15	7	6s
EmA	Enet loam, 0 to 2 percent slopes	14.26	3.23	60	46	3s
Te	Tetonka silt loam, 0 to 1 percent slopes	10.14	2.3	57	23	4w
EeC	Eakin-Ethan complex, 6 to 9 percent slopes	5	1.13	66	63	3e
HuA	Houdek loam, 0 to 2 percent slopes	4.4	1.0	86	65	2c
TOTALS		441.1 9(*)	100%	85.05	57.4	2.26

(\*) Total acres may differ in the second decimal compared to the sum of each acreage soil. This is due to a round error because we only show the acres of each soil with two decimal.

## Capability Legend

Increased Limitations and Hazards

Decreased Adaptability and Freedom of Choice Users

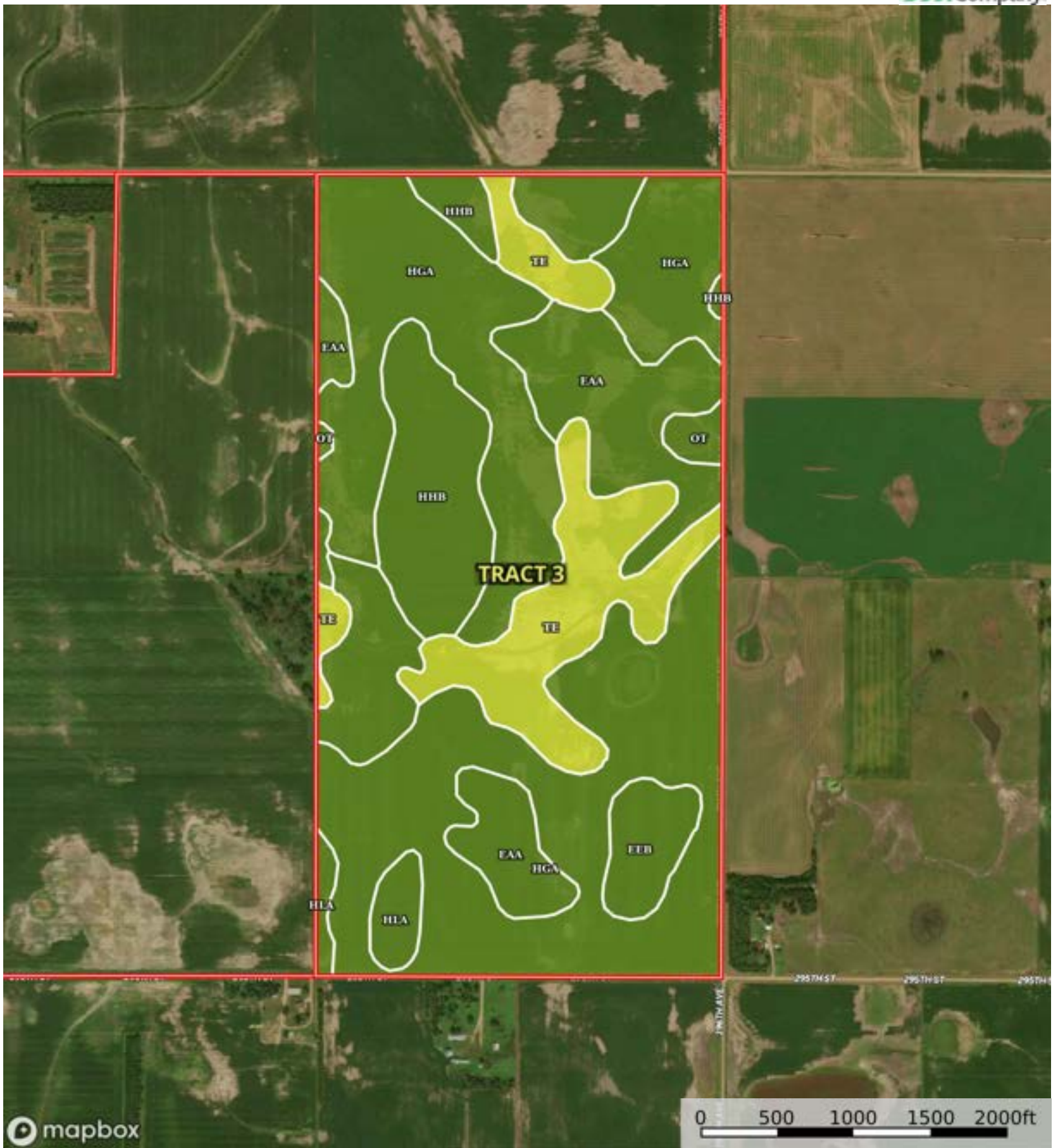
Land, Capability

								
	1	2	3	4	5	6	7	8
'Wild Life'	•	•	•	•	•	•	•	•
Forestry	•	•	•	•	•	•	•	
Limited	•	•	•	•	•	•	•	
Moderate	•	•	•	•	•	•		
Intense	•	•	•	•	•			
Limited	•	•	•	•				
Moderate	•	•	•					
Intense	•	•						
Very Intense	•							

### Grazing Cultivation

(c) climatic limitations (e) susceptibility to erosion

(s) soil limitations within the rooting zone (w) excess of water



Boundary

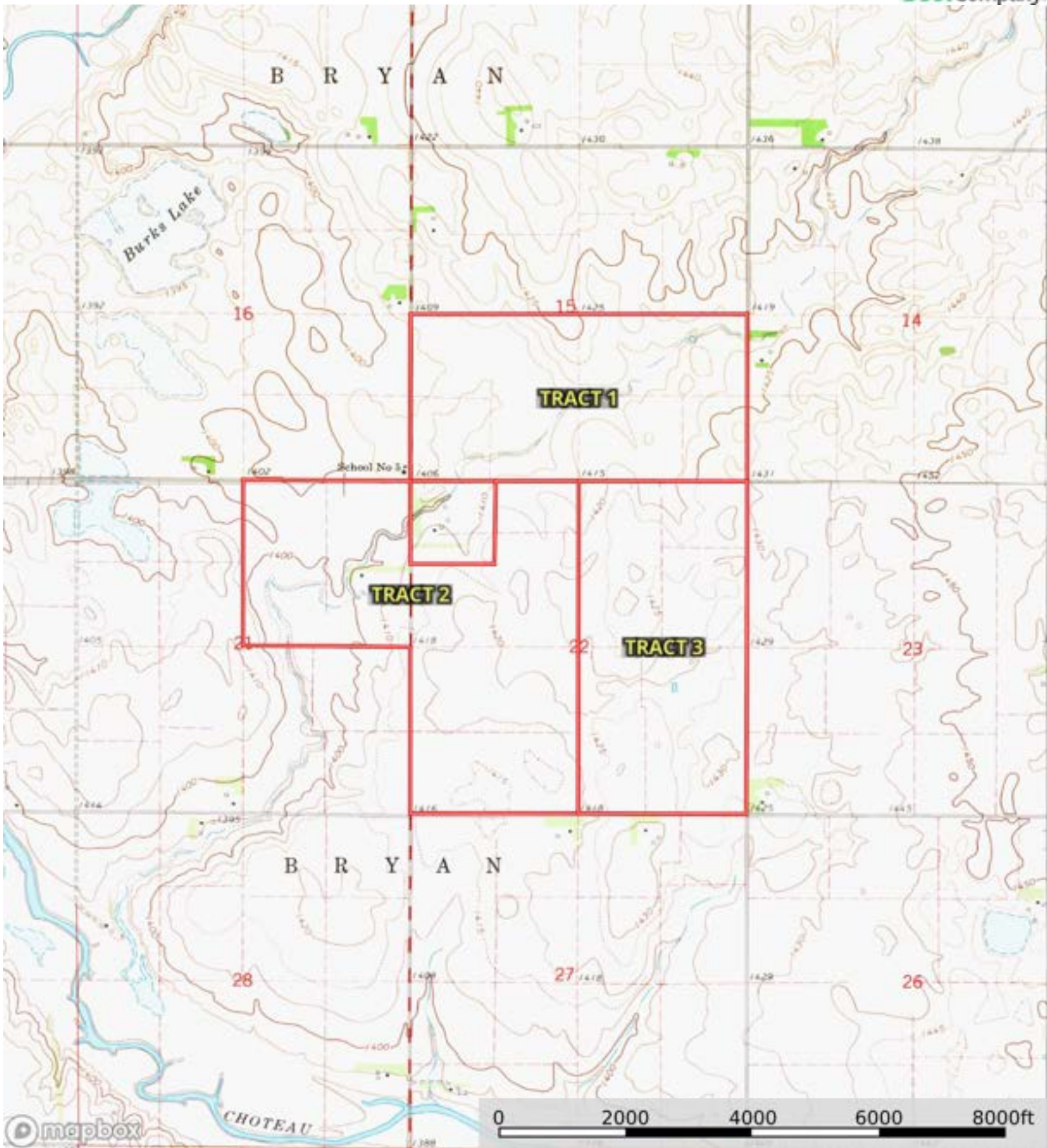


| Boundary 322.63 ac

SOIL CODE	SOIL DESCRIPTION	ACRES	%	CPI	NCCPI	CAP
HgA	Highmore silt loam, 0 to 2 percent slopes	162.76	50.45	92	59	2c
Te	Tetonka silt loam, 0 to 1 percent slopes	43.0	13.33	57	23	4w
EaA	Eakin silt loam, 0 to 2 percent slopes	41.79	12.95	88	67	2c
HhB	Highmore silt loam, 2 to 6 percent slopes	39.55	12.26	91	58	2e
HIA	Highmore-Walke silt loams, 0 to 2 percent slopes	21.56	6.68	86	64	2c
EeB	Eakin-Ethan complex, 2 to 6 percent slopes	9.65	2.99	76	64	2e
Ot	Onita-Tetonka silt loams	4.32	1.34	86	46	2c
TOTALS		322.63(*)	100%	85.73	55.42	2.27

(\*) Total acres may differ in the second decimal compared to the sum of each acreage soil. This is due to a round error because we only show the acres of each soil with two decimal.





Boundary