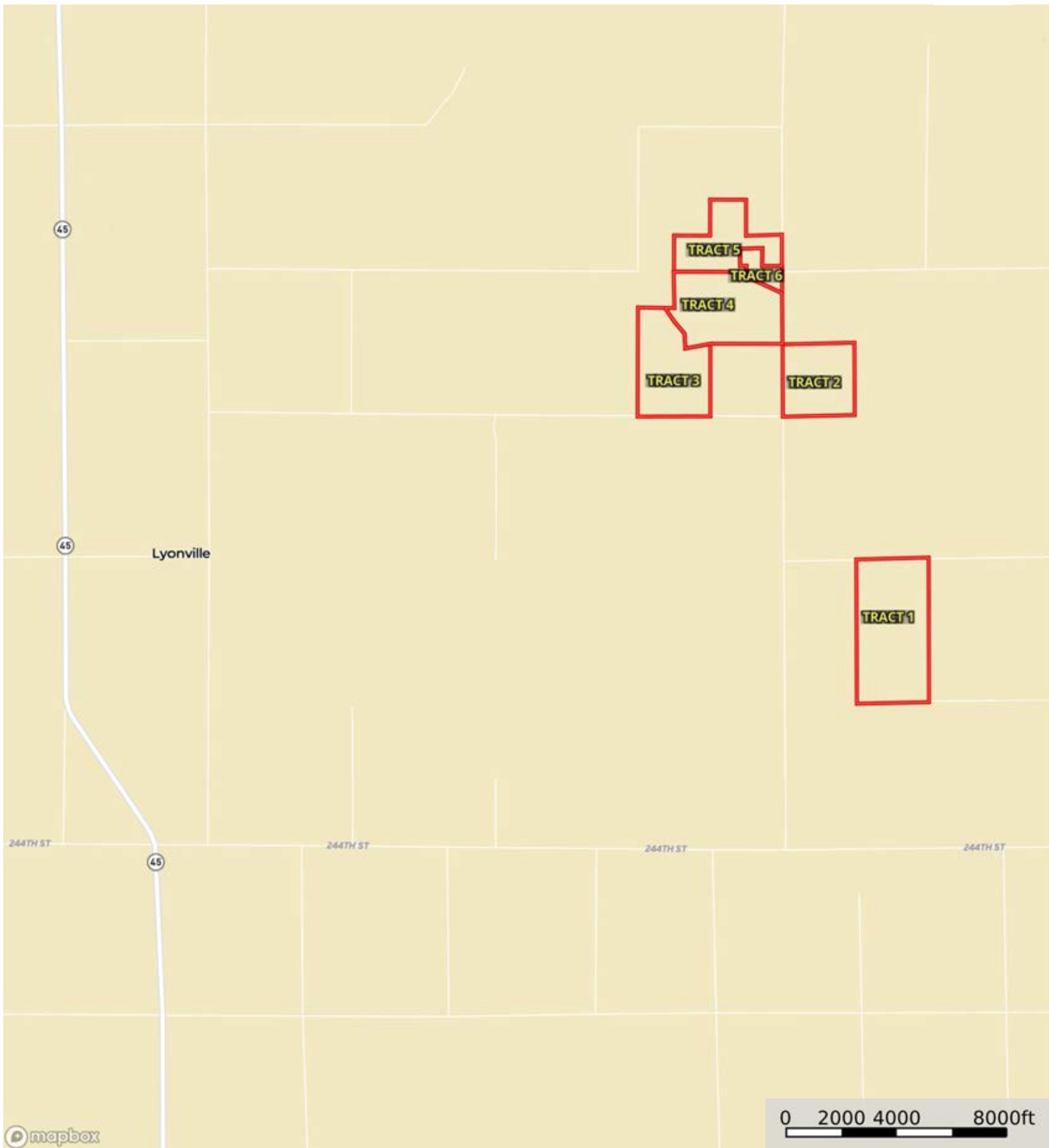
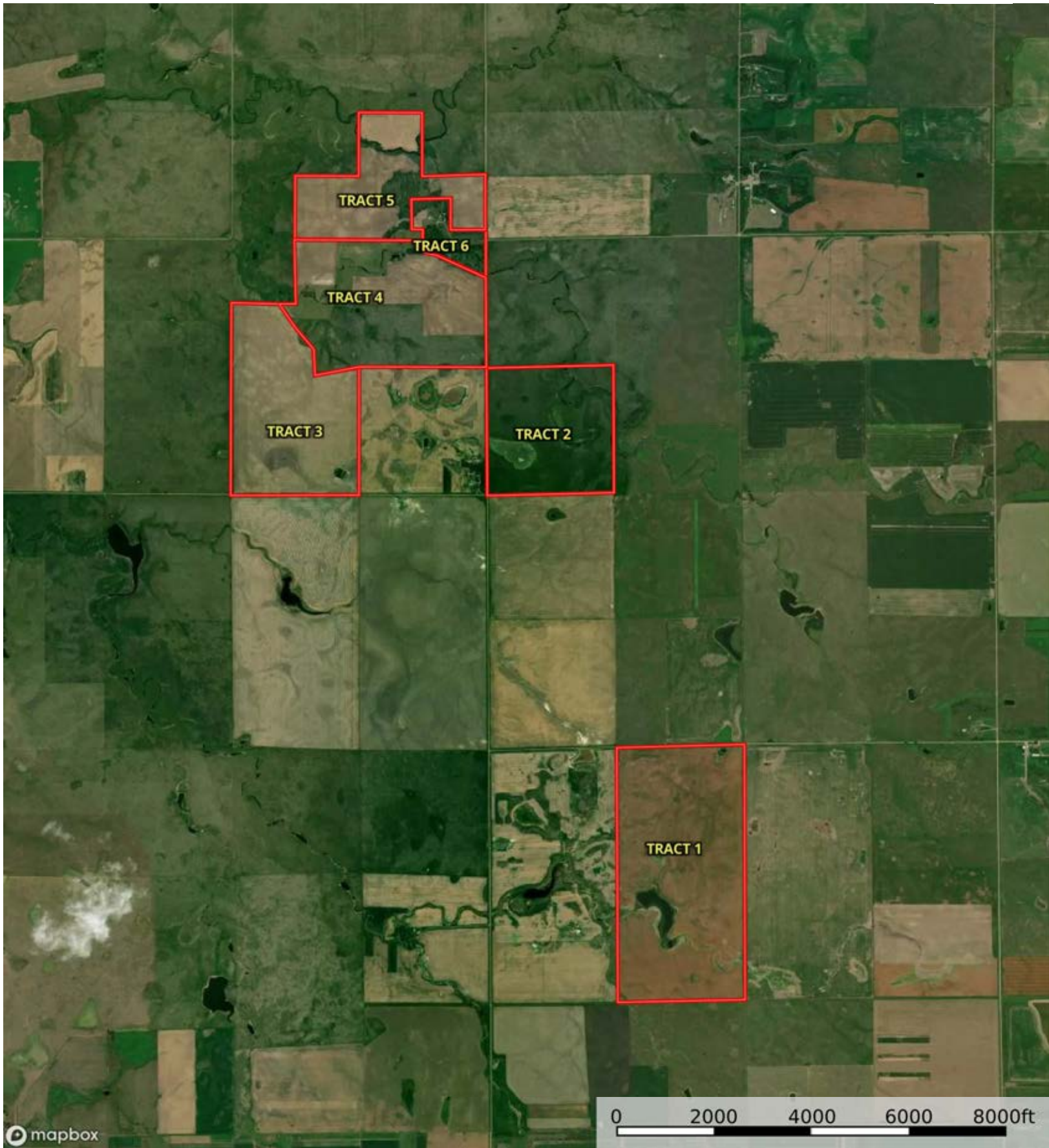



# A-21957

Brule County, South Dakota, 1038 AC +/-

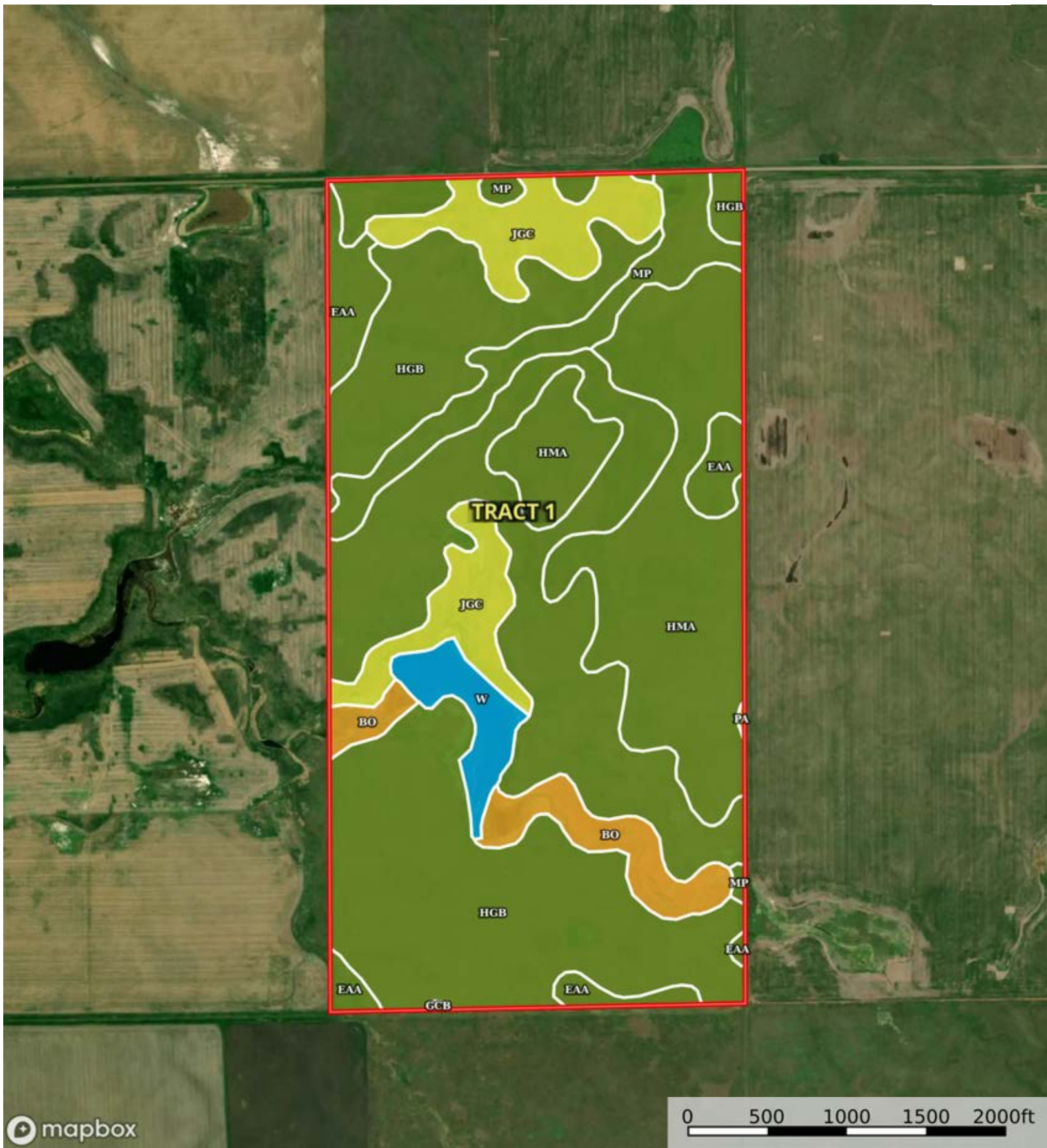


 Boundary



 Boundary





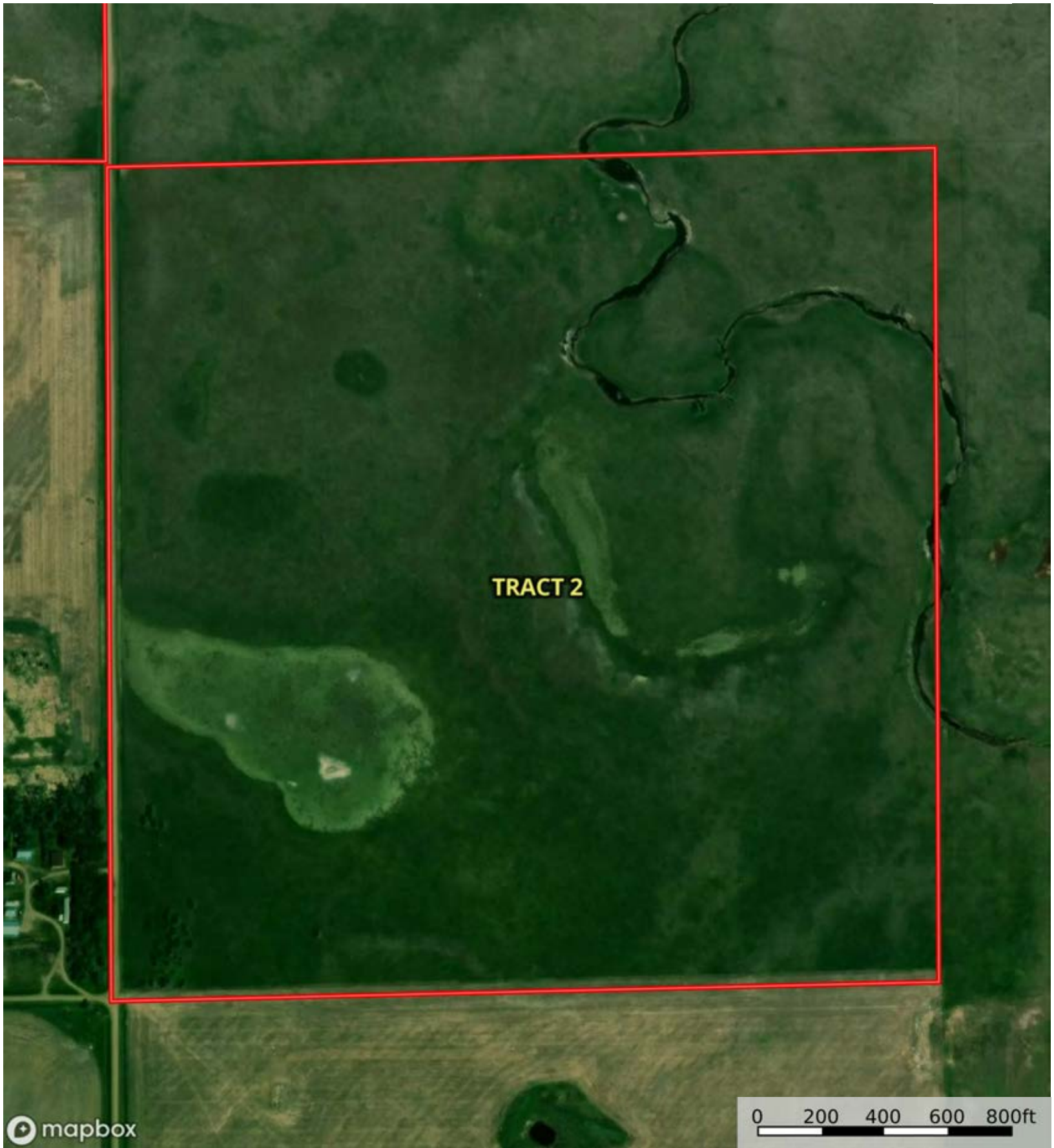
Boundary

Boundary 317.92 ac

SOIL CODE	SOIL DESCRIPTION	ACRES	%	CPI	NCCPI	CAP
HgB	Highmore-Java complex, 1 to 5 percent slopes	164.43	51.72	77	54	2e
HmA	Highmore-Mobridge silt loams, 0 to 4 percent slopes	65.38	20.57	88	63	2c
JgC	Java-Glenham loams, 6 to 9 percent slopes	28.11	8.84	52	50	4e
Mp	Mobridge-Plankinton silt loams	22.8	7.17	87	48	2c
EaA	Eakin-DeGrey silt loams, 0 to 2 percent slopes	14.7	4.62	70	54	2c
Bo	Bon loam, channeled, 0 to 2 percent slopes, frequently flooded	13.78	4.33	35	36	6w
W	Water	8.41	2.65	0	-	8
Pa	Plankinton silt loam	0.17	0.05	55	16	4w
GcB	Glenham-Cavo loams, 0 to 6 percent slopes	0.14	0.04	66	44	2e
TOTALS		317.92(*)	100%	73.57	52.84	2.51

(\*) Total acres may differ in the second decimal compared to the sum of each acreage soil. This is due to a round error because we only show the acres of each soil with two decimal.





A-21957

Brule County, South Dakota, 1038 AC +/-



mapbox

0 200 400 600 800ft

Boundary



The information contained herein was obtained from sources deemed to be reliable. Land id™ Services makes no warranties or guarantees as to the completeness or accuracy thereof.

|  Boundary 158.24 ac

SOIL CODE	SOIL DESCRIPTION	ACRES	%	CPI	NCCPI	CAP
ReB	Ree loam, 3 to 7 percent slopes	28.94	18.29	75	59	2e
OdB	Oahe-Delmont loams, 2 to 6 percent slopes	26.12	16.51	47	33	3e
Bo	Bon loam, channeled, 0 to 2 percent slopes, frequently flooded	25.66	16.22	35	36	6w
DeD	Delmont loam, 6 to 15 percent slopes	25.01	15.81	14	25	6e
Pa	Plankinton silt loam	13.39	8.46	55	16	4w
ReA	Ree loam, 0 to 3 percent slopes	10.42	6.59	86	60	2c
EaA	Eakin-DeGrey silt loams, 0 to 2 percent slopes	10.04	6.35	70	54	2c
Mp	Mobridge-Plankinton silt loams	5.99	3.79	87	48	2c
Bn	Bon loam, 0 to 2 percent slopes, rarely flooded	4.81	3.04	85	75	2c
Oa	Oahe-Delmont loams, 0 to 2 percent slopes	4.21	2.66	53	34	3s
BmF	Betts-Java loams, 20 to 40 percent slopes	3.65	2.31	11	7	7e
TOTALS		158.24(*)	100%	51.67	39.93	3.76

(\*) Total acres may differ in the second decimal compared to the sum of each acreage soil. This is due to a round error because we only show the acres of each soil with two decimal.











## Capability Legend

Increased Limitations and Hazards

Decreased Adaptability and Freedom of Choice Users

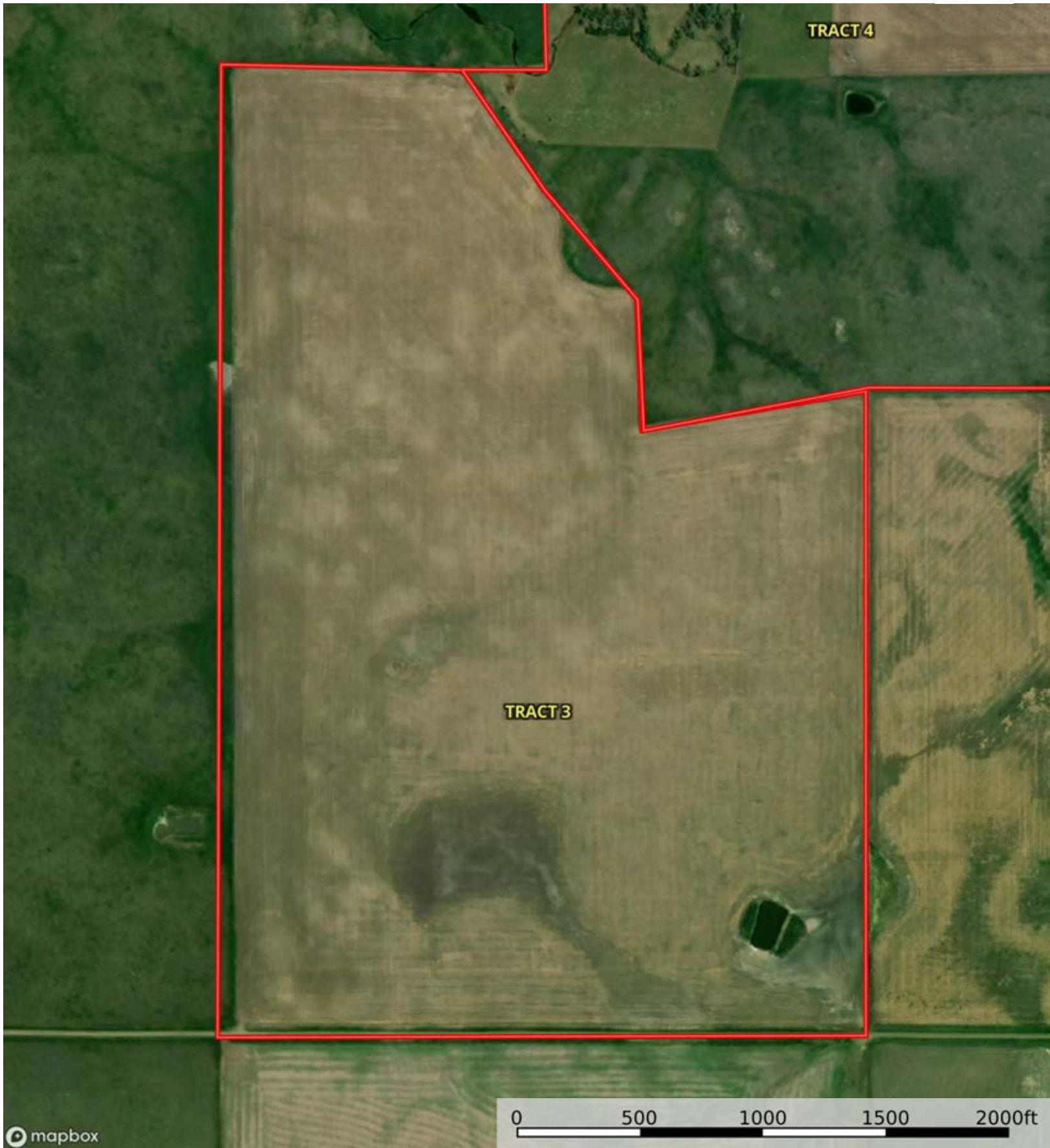
Land, Capability

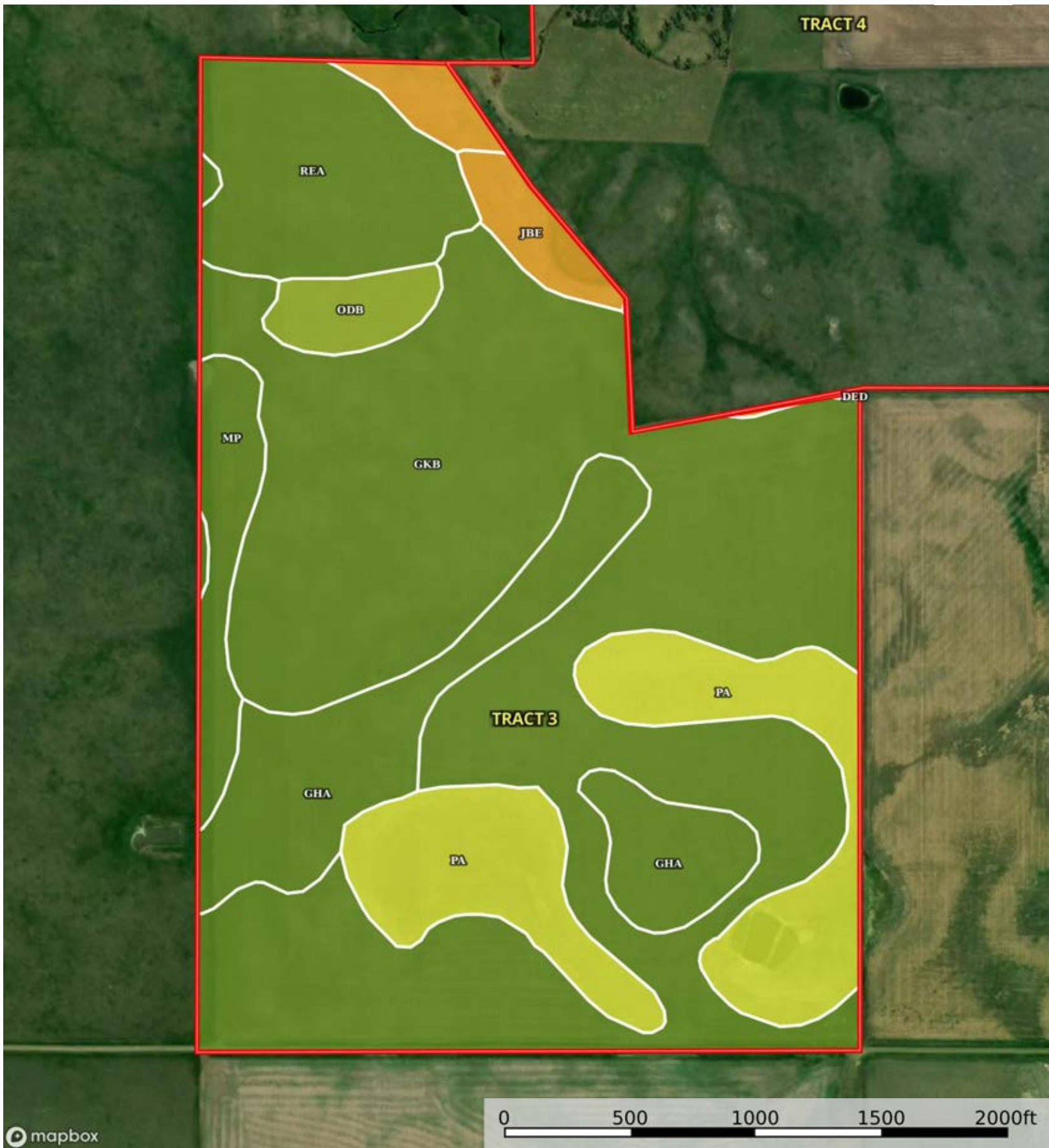
								
	1	2	3	4	5	6	7	8
'Wild Life'	•	•	•	•	•	•	•	•
Forestry	•	•	•	•	•	•	•	
Limited	•	•	•	•	•	•	•	
Moderate	•	•	•	•	•	•		
Intense	•	•	•	•	•			
Limited	•	•	•	•				
Moderate	•	•	•					
Intense	•	•						
Very Intense	•							

### Grazing Cultivation

(c) climatic limitations (e) susceptibility to erosion

(s) soil limitations within the rooting zone (w) excess of water





Boundary

|  Boundary 201.7 ac

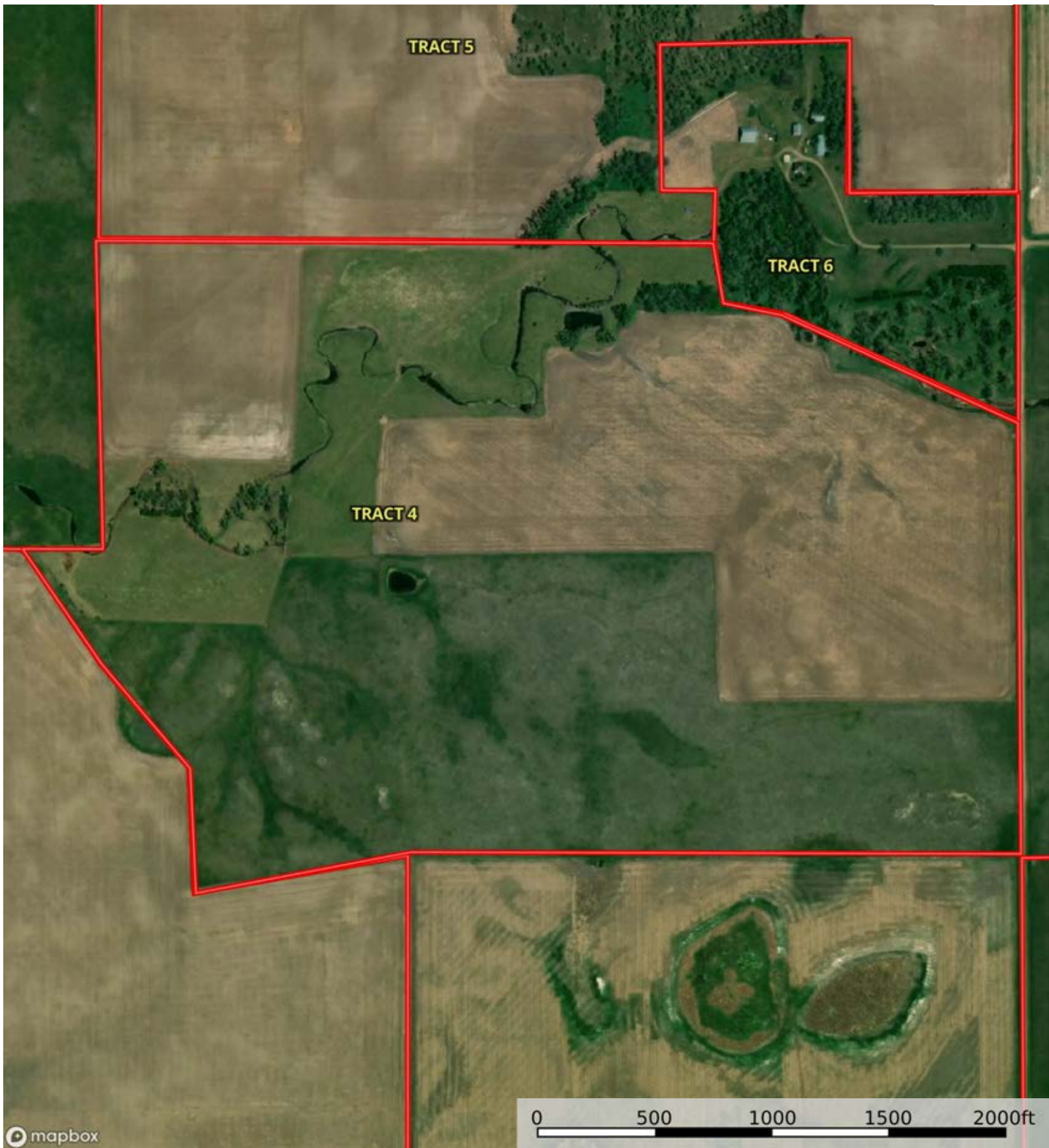
SOIL CODE	SOIL DESCRIPTION	ACRES	%	CPI	NCCPI	CAP
GkB	Glenham-Java-Prosper loams, 1 to 6 percent slopes	113.4	56.22	77	54	2e
Pa	Plankinton silt loam	28.37	14.07	55	16	4w
GhA	Glenham-Prosper loams, 0 to 2 percent slopes	23.9	11.85	87	56	2c
ReA	Ree loam, 0 to 3 percent slopes	17.8	8.82	86	60	2c
Mp	Mobridge-Plankinton silt loams	7.16	3.55	87	48	2c
OdB	Oahe-Delmont loams, 2 to 6 percent slopes	4.2	2.08	47	33	3e
JbE	Java-Betts loams, 9 to 20 percent slopes	3.92	1.94	18	42	6e
DeD	Delmont loam, 6 to 15 percent slopes	2.95	1.46	14	25	6e
TOTALS		201.7(*)	100%	73.55	48.11	2.44


(\*) Total acres may differ in the second decimal compared to the sum of each acreage soil. This is due to a round error because we only show the acres of each soil with two decimal.

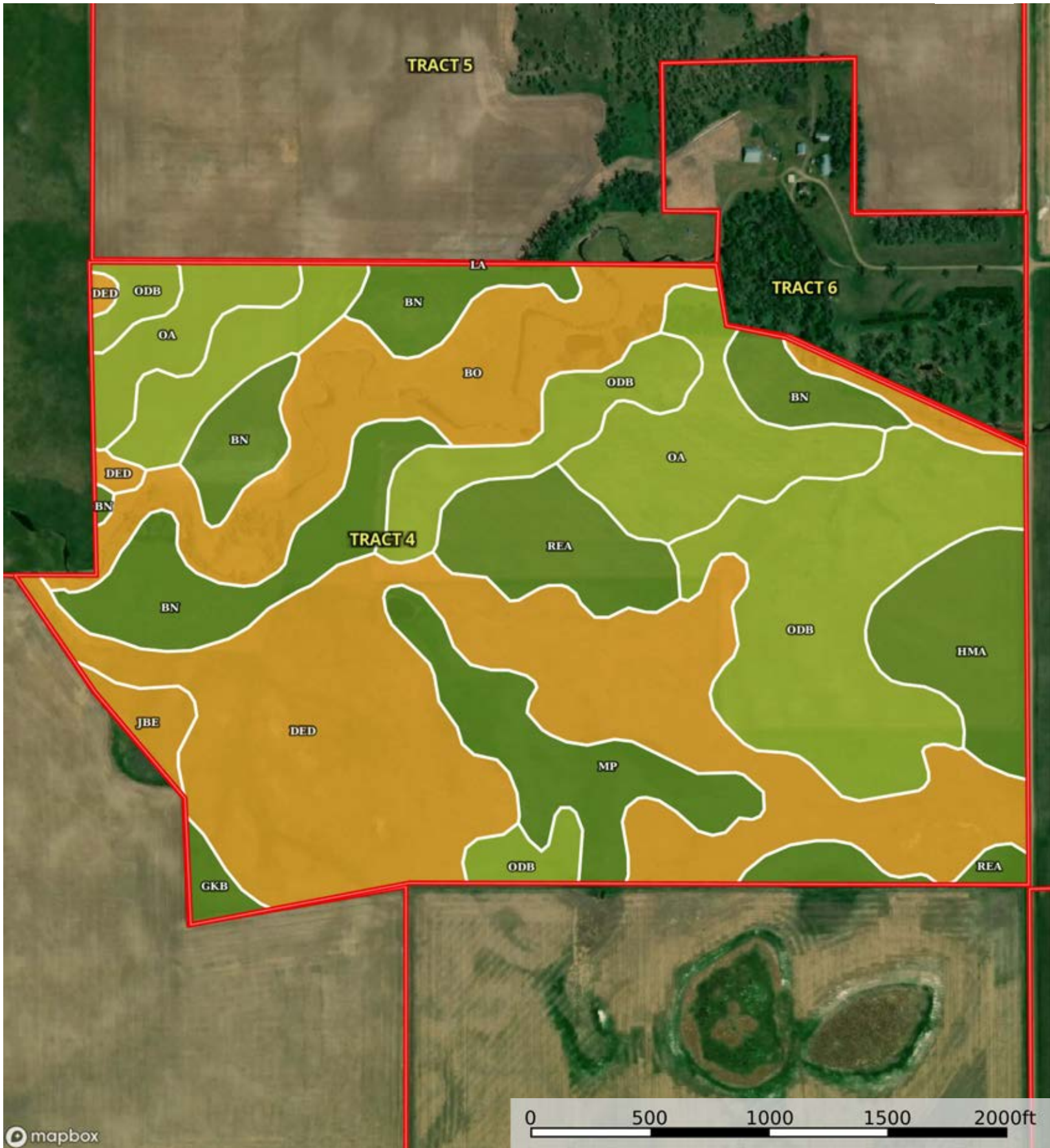


A-21957

Brule County, South Dakota, 1038 AC +/-



 Boundary



Boundary

|  Boundary 220.36 ac

SOIL CODE	SOIL DESCRIPTION	ACRES	%	CPI	NCCPI	CAP
DeD	Delmont loam, 6 to 15 percent slopes	64.58	29.31	14	25	6e
OdB	Oahe-Delmont loams, 2 to 6 percent slopes	46.98	21.32	47	33	3e
Bo	Bon loam, channeled, 0 to 2 percent slopes, frequently flooded	26.13	11.86	35	36	6w
Bn	Bon loam, 0 to 2 percent slopes, rarely flooded	24.2	10.98	85	75	2c
Oa	Oahe-Delmont loams, 0 to 2 percent slopes	19.06	8.65	53	34	3s
ReA	Ree loam, 0 to 3 percent slopes	12.46	5.65	86	60	2c
Mp	Mobridge-Plankinton silt loams	12.24	5.55	87	48	2c
HmA	Highmore-Mobridge silt loams, 0 to 4 percent slopes	10.72	4.86	88	63	2c
JbE	Java-Betts loams, 9 to 20 percent slopes	2.37	1.08	18	42	6e
GkB	Glenham-Java-Prosper loams, 1 to 6 percent slopes	1.61	0.73	77	54	2e
La	Lane silty clay loam, 0 to 2 percent slopes, rarely flooded	0.01	0.0	87	60	2s
TOTALS		220.36(*)	100%	46.93	39.78	3.99









(\*) Total acres may differ in the second decimal compared to the sum of each acreage soil. This is due to a round error because we only show the acres of each soil with two decimal.

## Capability Legend

Increased Limitations and Hazards

Decreased Adaptability and Freedom of Choice Users

Land, Capability

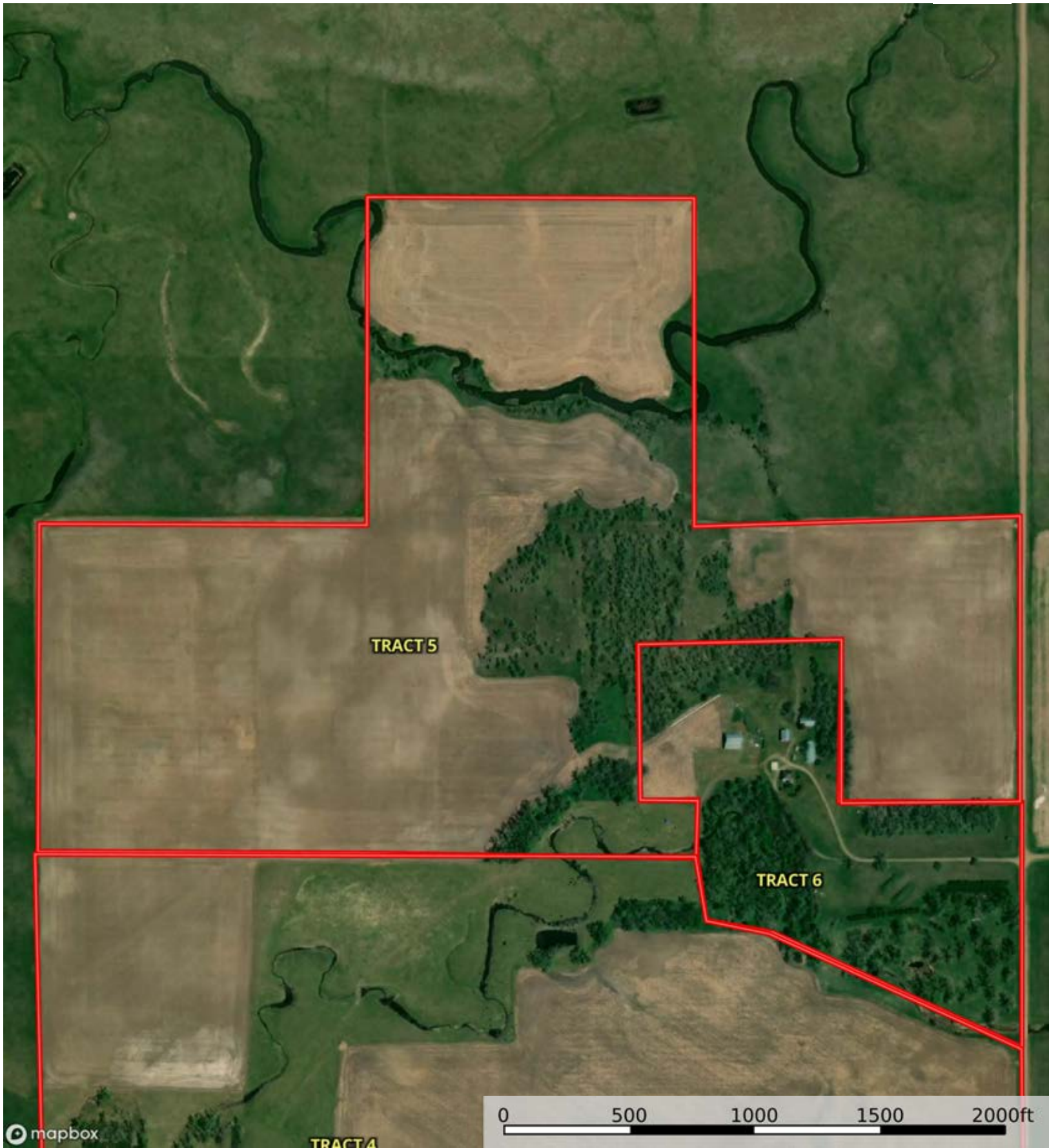
								
	1	2	3	4	5	6	7	8
'Wild Life'	•	•	•	•	•	•	•	•
Forestry	•	•	•	•	•	•	•	
Limited	•	•	•	•	•	•	•	
Moderate	•	•	•	•	•	•		
Intense	•	•	•	•	•			
Limited	•	•	•	•				
Moderate	•	•	•					
Intense	•	•						
Very Intense	•							

### Grazing Cultivation

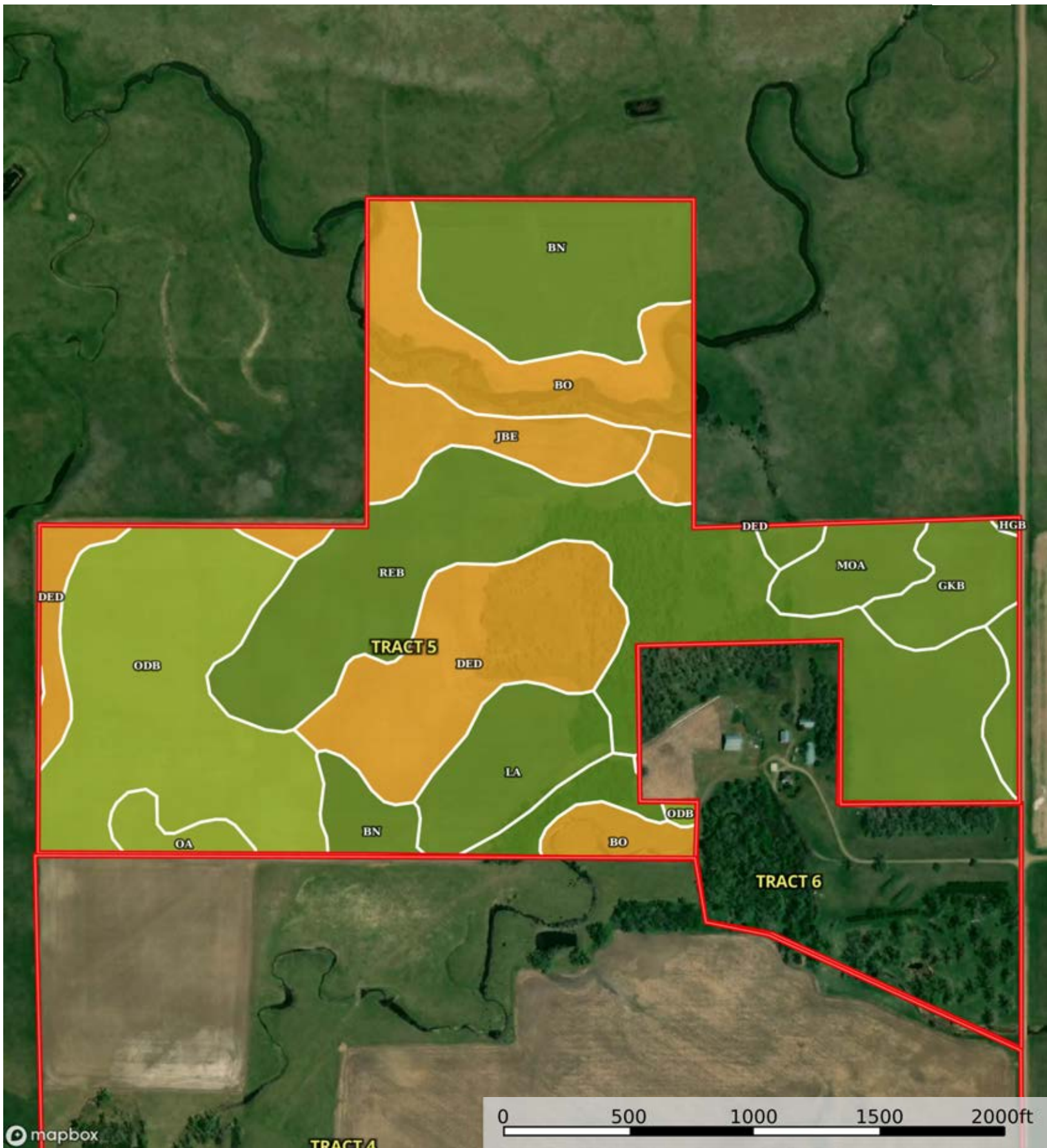
(c) climatic limitations (e) susceptibility to erosion

(s) soil limitations within the rooting zone (w) excess of water





 Boundary



Boundary

|  Boundary 140.55 ac

SOIL CODE	SOIL DESCRIPTION	ACRES	%	CPI	NCCPI	CAP
ReB	Ree loam, 3 to 7 percent slopes	36.23	25.78	75	59	2e
OdB	Oahe-Delmont loams, 2 to 6 percent slopes	24.16	17.19	47	33	3e
DeD	Delmont loam, 6 to 15 percent slopes	19.31	13.74	14	25	6e
Bn	Bon loam, 0 to 2 percent slopes, rarely flooded	19.15	13.62	85	75	2c
Bo	Bon loam, channeled, 0 to 2 percent slopes, frequently flooded	13.88	9.87	35	36	6w
La	Lane silty clay loam, 0 to 2 percent slopes, rarely flooded	7.4	5.26	87	60	2s
JbE	Java-Betts loams, 9 to 20 percent slopes	7.33	5.21	18	42	6e
GkB	Glenham-Java-Prosper loams, 1 to 6 percent slopes	5.51	3.92	77	54	2e
MoA	Mobridge silt loam, 0 to 2 percent slopes	3.94	2.8	94	65	2c
Oa	Oahe-Delmont loams, 0 to 2 percent slopes	1.88	1.34	53	34	3s
HgB	Highmore-Java complex, 1 to 5 percent slopes	1.76	1.25	77	54	2e
TOTALS		140.55(*)	100%	57.22	48.51	3.34









(\*) Total acres may differ in the second decimal compared to the sum of each acreage soil. This is due to a round error because we only show the acres of each soil with two decimal.

## Capability Legend

Increased Limitations and Hazards

Decreased Adaptability and Freedom of Choice Users

Land, Capability

								
	1	2	3	4	5	6	7	8
'Wild Life'	•	•	•	•	•	•	•	•
Forestry	•	•	•	•	•	•	•	
Limited	•	•	•	•	•	•	•	
Moderate	•	•	•	•	•	•		
Intense	•	•	•	•	•			
Limited	•	•	•	•				
Moderate	•	•	•					
Intense	•	•						
Very Intense	•							

### Grazing Cultivation

(c) climatic limitations (e) susceptibility to erosion

(s) soil limitations within the rooting zone (w) excess of water



TRACT 6



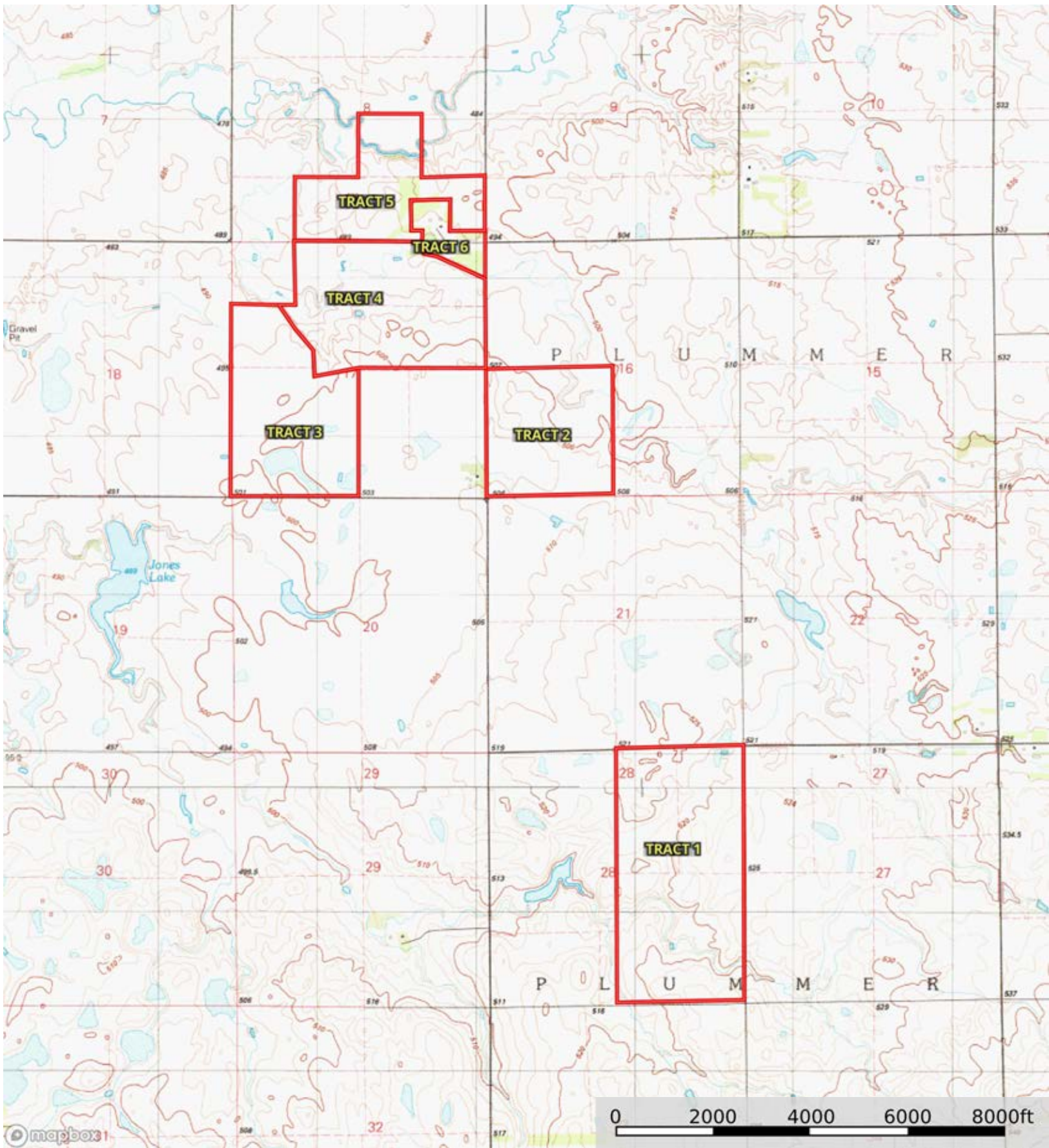
 Boundary


|  Boundary 32.33 ac

SOIL CODE	SOIL DESCRIPTION	ACRES	%	CPI	NCCPI	CAP
ReB	Ree loam, 3 to 7 percent slopes	14.04	43.43	75	59	2e
Bo	Bon loam, channeled, 0 to 2 percent slopes, frequently flooded	10.51	32.51	35	36	6w
OdB	Oahe-Delmont loams, 2 to 6 percent slopes	5.5	17.01	47	33	3e
Bn	Bon loam, 0 to 2 percent slopes, rarely flooded	1.47	4.55	85	75	2c
Oa	Oahe-Delmont loams, 0 to 2 percent slopes	0.81	2.51	53	34	3s
TOTALS		32.33(*)	100%	57.14	47.2	3.5

(\*) Total acres may differ in the second decimal compared to the sum of each acreage soil. This is due to a round error because we only show the acres of each soil with two decimal.





 Boundary