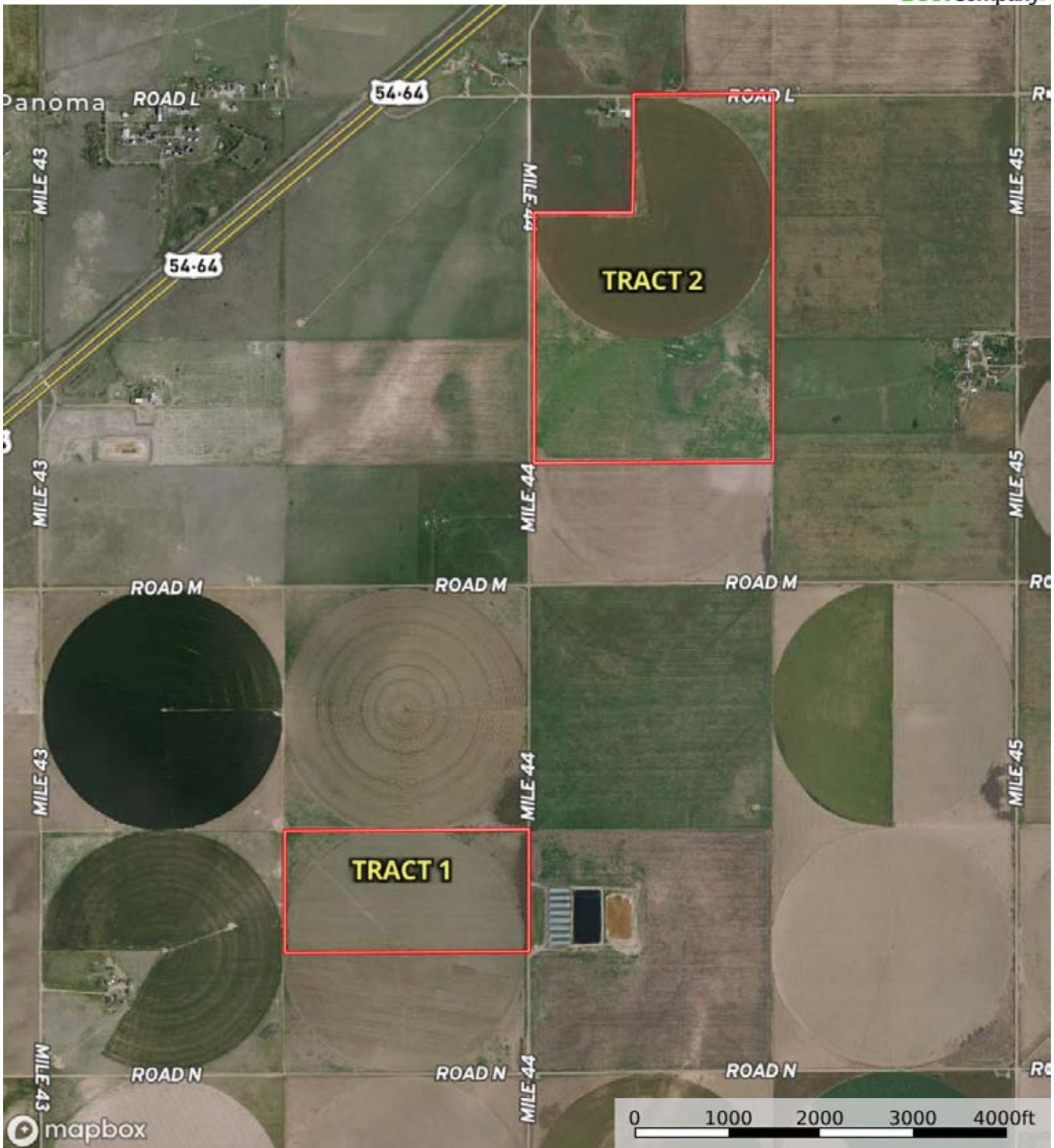
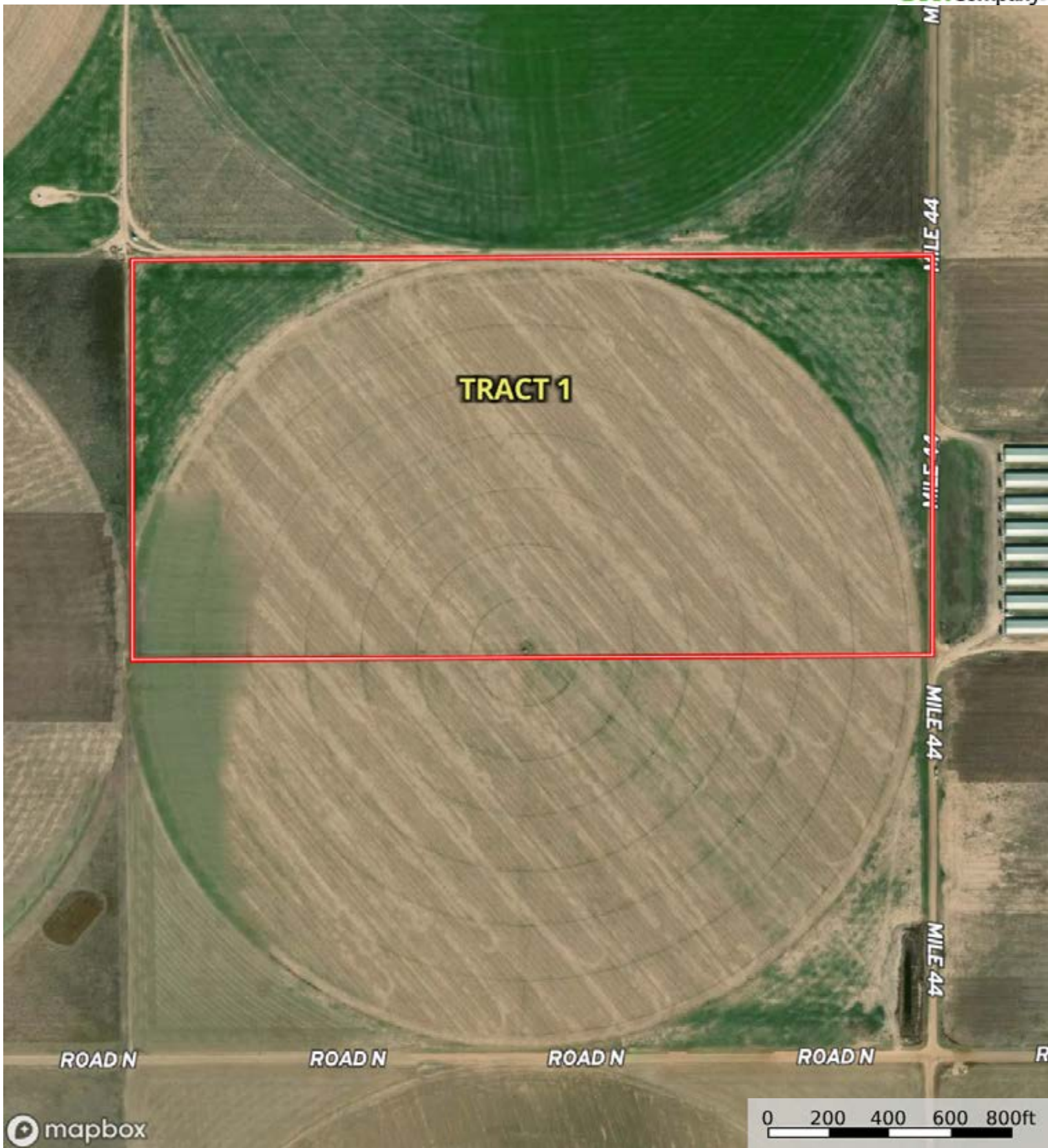
 Boundary




mapbox

0 1000 2000 3000 4000ft

Boundary



 Boundary



Boundary 80.0 ac

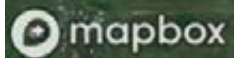
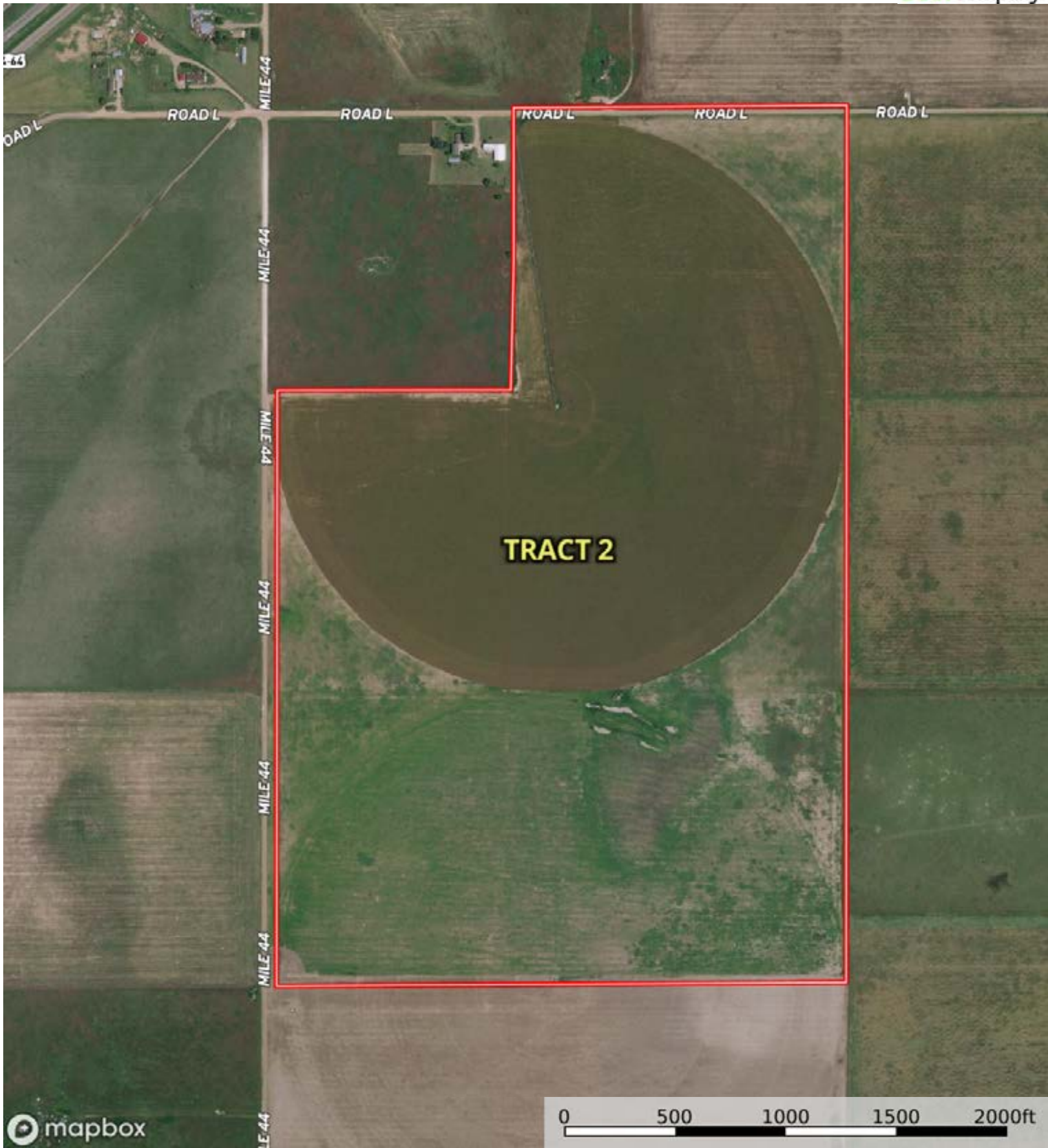
SOIL CODE	SOIL DESCRIPTION	ACRES	%	CPI	NCCPI	CAP
Rc	Gruver clay loam, 0 to 1 percent slopes	77.9	97.38	0	49	2c
DaA	Dalhart fine sandy loam, 0 to 1 percent slopes	2.1	2.63	0	46	3c
TOTALS		80.0(*)	100%	-	48.92	2.03

(*) Total acres may differ in the second decimal compared to the sum of each acreage soil. This is due to a round error because we only show the acres of each soil with two decimal.



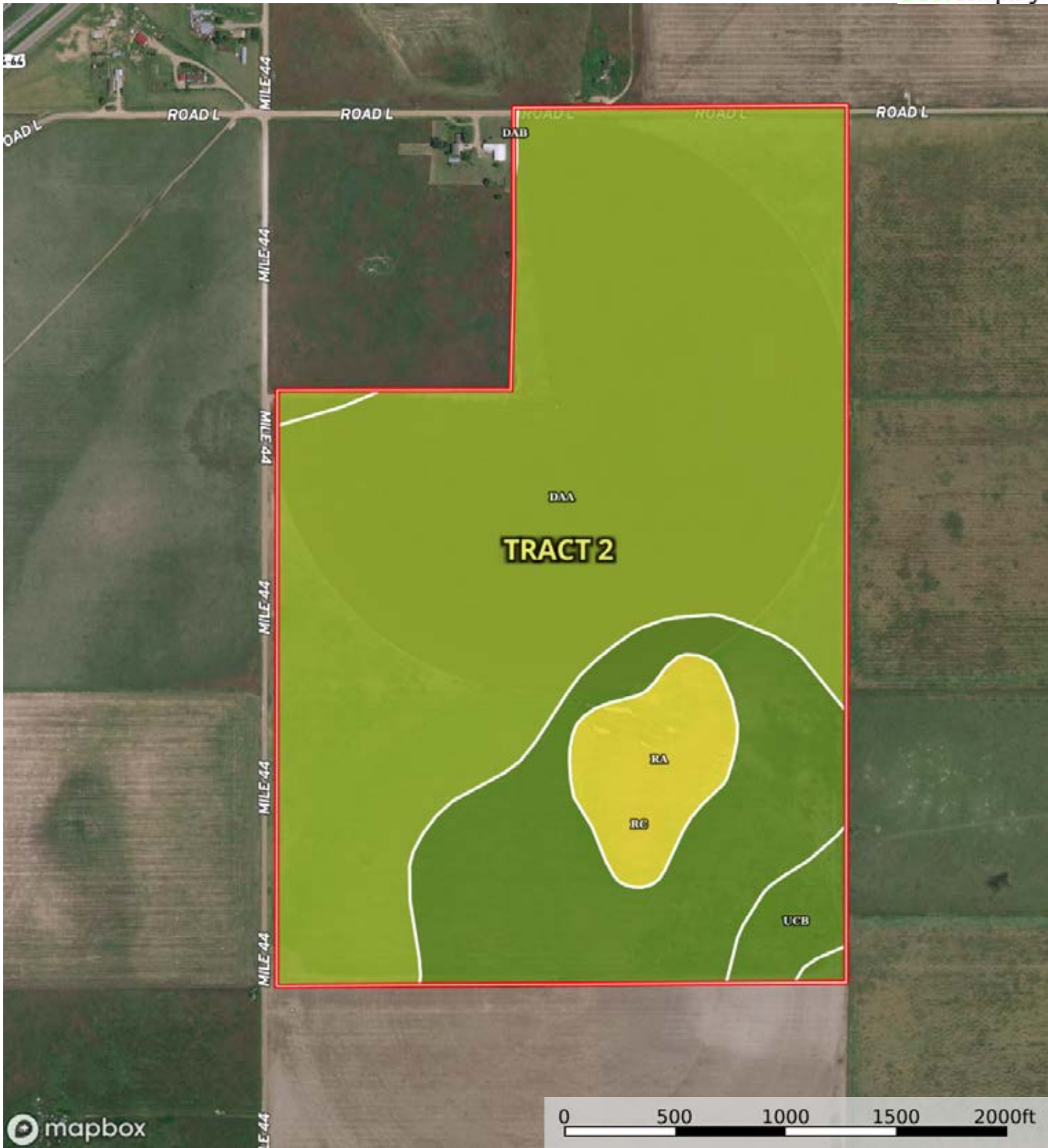
A-22083

Texas County, Oklahoma, 287.97 AC +/-



0 500 1000 1500 2000ft

 Boundary



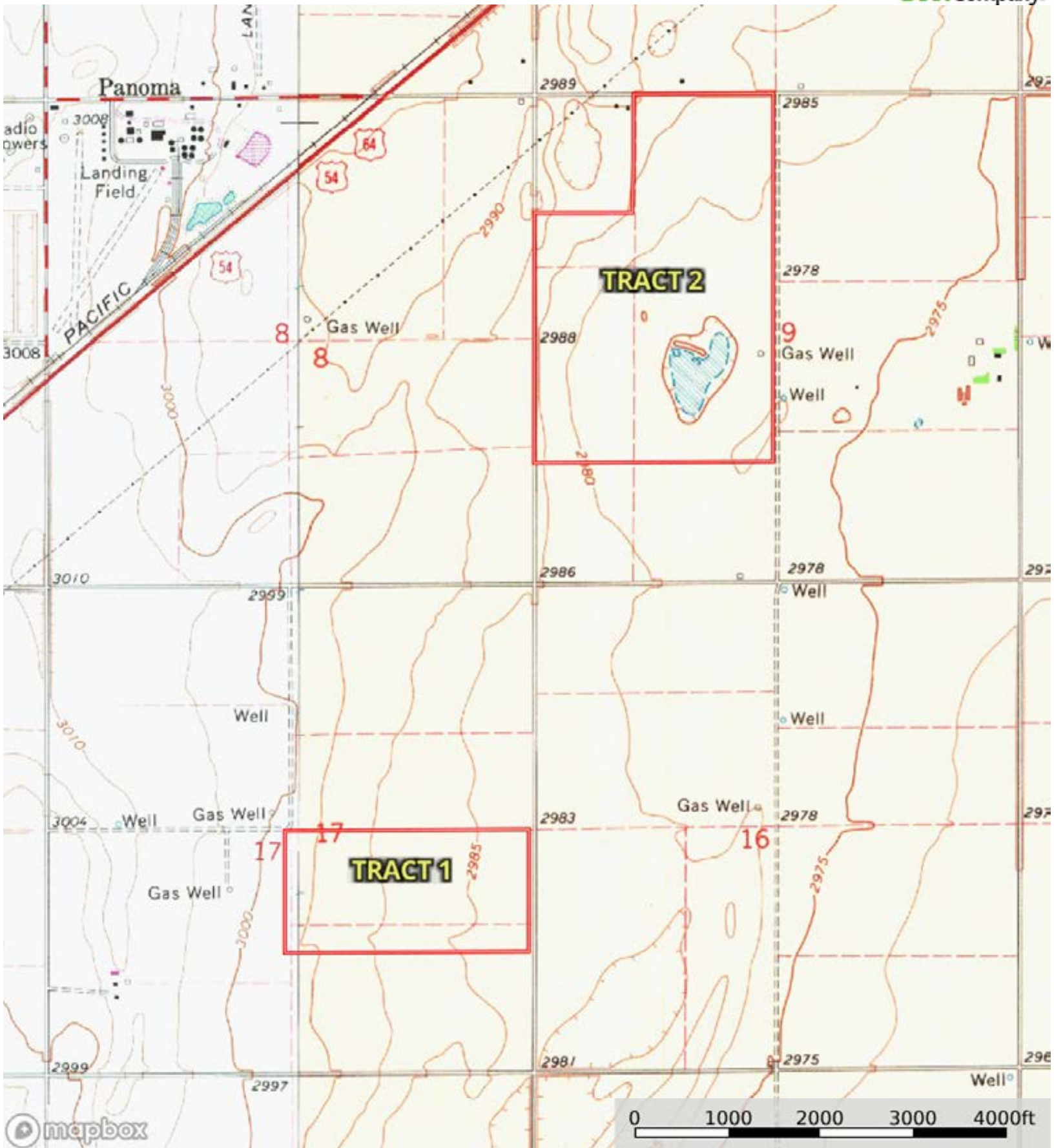
 Boundary

|  Boundary 204.99 ac

SOIL CODE	SOIL DESCRIPTION	ACRES	%	CPI	NCCPI	CAP
DaA	Dalhart fine sandy loam, 0 to 1 percent slopes	143.78	70.14	0	46	3c
Rc	Gruver clay loam, 0 to 1 percent slopes	43.04	21.0	0	49	2c
Ra	Ness clay, 0 to 1 percent slopes, frequently ponded	11.93	5.82	0	11	5w
UcB	Ulysses clay loam, 1 to 3 percent slopes	5.18	2.53	0	58	2e
DaB	Dalhart fine sandy loam, 1 to 3 percent slopes	1.06	0.52	0	49	3c
TOTALS		204.99(*)	100%	-	44.91	2.88

(*) Total acres may differ in the second decimal compared to the sum of each acreage soil. This is due to a round error because we only show the acres of each soil with two decimal.





 Boundary