 Boundary

A-22124

Clay County, Turner County, South Dakota, 312.83 AC +/-



mapbox

Boundary

A-22124

Clay County, Turner County, South Dakota, 312.83 AC +/-



Boundary



The information contained herein was obtained from sources deemed to be reliable. Land id™ Services makes no warranties or guarantees as to the completeness or accuracy thereof.

|  Boundary 157.72 ac

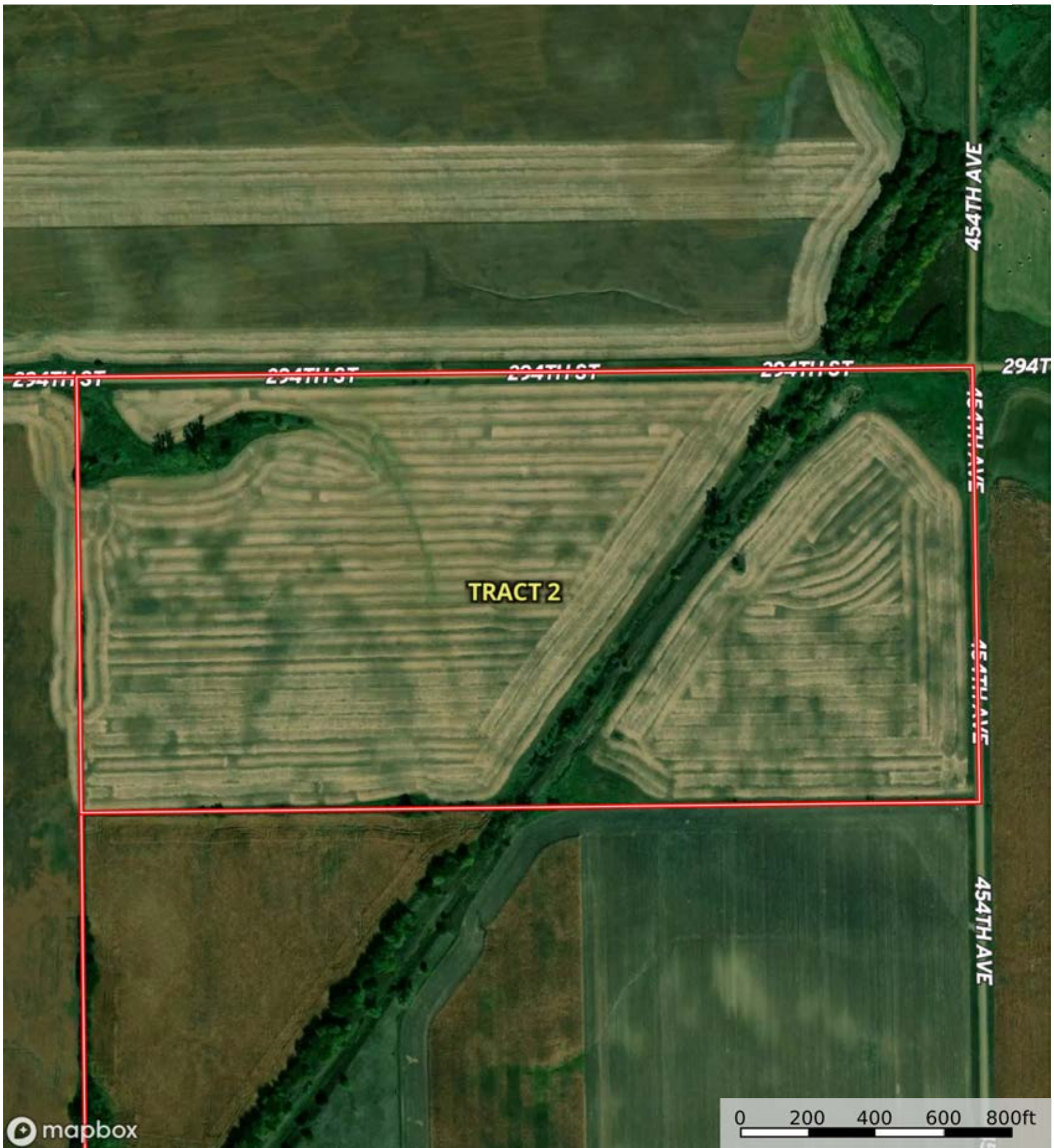
SOIL CODE	SOIL DESCRIPTION	ACRES	%	CPI	NCCPI	CAP
EeB	Egan-Ethan complex, 2 to 6 percent slopes	75.59	47.93	78	59	2e
EgB	Egan-Wentworth complex, 2 to 6 percent slopes	56.61	35.89	85	68	2e
EtC	Ethan-Egan complex, 5 to 9 percent slopes	18.14	11.5	62	57	4e
EsD	Ethan-Betts loams, 9 to 15 percent slopes	6.21	3.94	31	57	6e
Cc	Bon loam, channeled, 0 to 2 percent slopes, frequently flooded	0.65	0.41	35	36	6w
Ac	Alcester silty clay loam, cool, 0 to 2 percent slopes	0.52	0.33	97	80	1
TOTALS		157.72(*)	100%	76.71	61.9	2.4

(\*) Total acres may differ in the second decimal compared to the sum of each acreage soil. This is due to a round error because we only show the acres of each soil with two decimal.



A-22124

Clay County, Turner County, South Dakota, 312.83 AC +/-



mapbox

0 200 400 600 800ft

Boundary



The information contained herein was obtained from sources deemed to be reliable. Land id™ Services makes no warranties or guarantees as to the completeness or accuracy thereof.

A-22124

Clay County, Turner County, South Dakota, 312.83 AC +/-



 Boundary

|  Boundary 78.77 ac

SOIL CODE	SOIL DESCRIPTION	ACRES	%	CPI	NCCPI	CAP
EeB	Egan-Ethan complex, 2 to 6 percent slopes	69.26	87.93	78	59	2e
Ca	Chancellor silty clay loam, 0 to 2 percent slopes, frequently flooded	7.54	9.57	82	64	2w
Sa	Salmo silty clay loam	1.97	2.5	32	31	4w
TOTALS		78.77(*)	100%	77.23	58.78	2.05


(\*) Total acres may differ in the second decimal compared to the sum of each acreage soil. This is due to a round error because we only show the acres of each soil with two decimal.



A-22124

Clay County, Turner County, South Dakota, 312.83 AC +/-




 Boundary



A-22124

Clay County, Turner County, South Dakota, 312.83 AC +/-



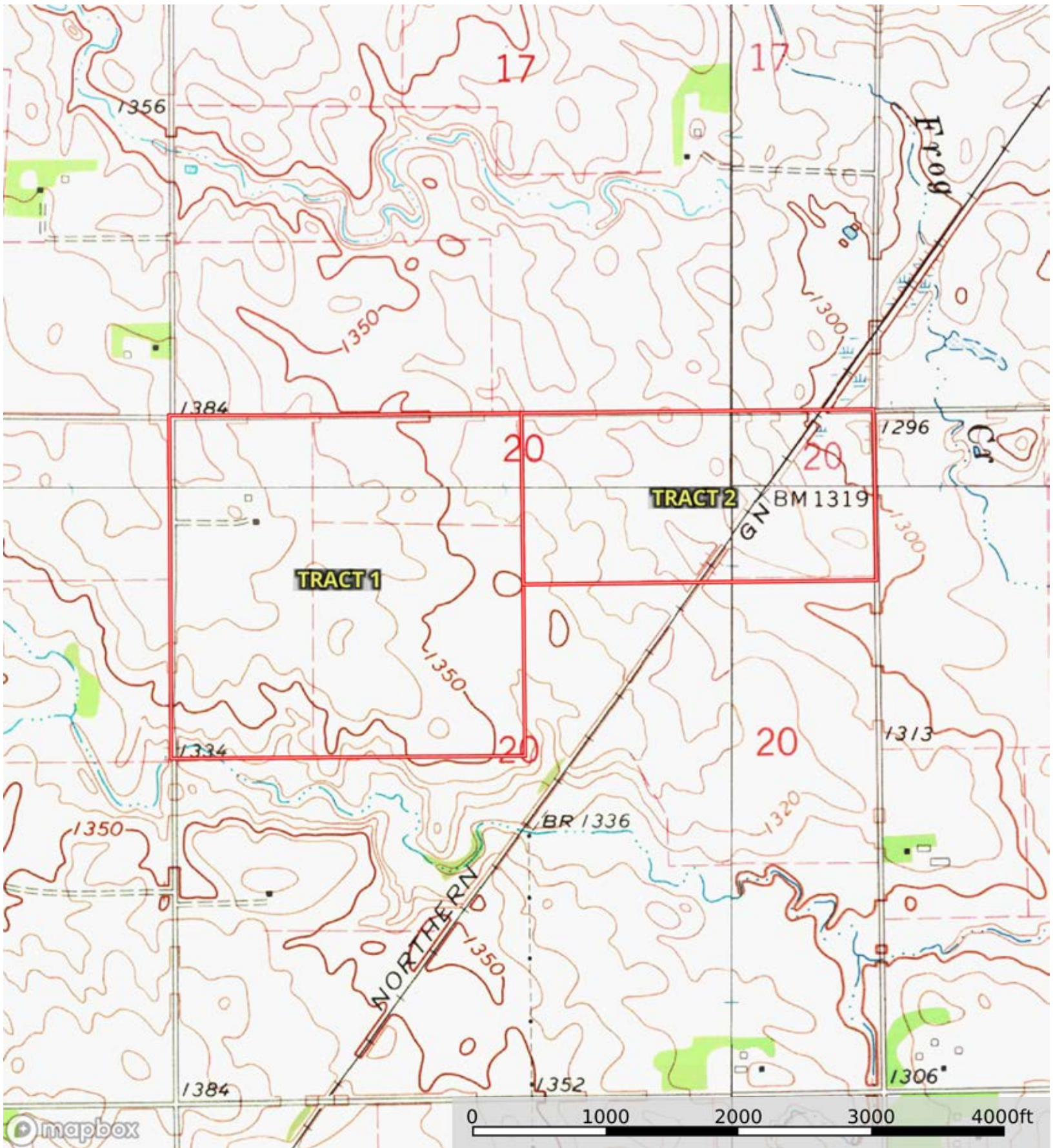
 Boundary


|  Boundary 75.19 ac

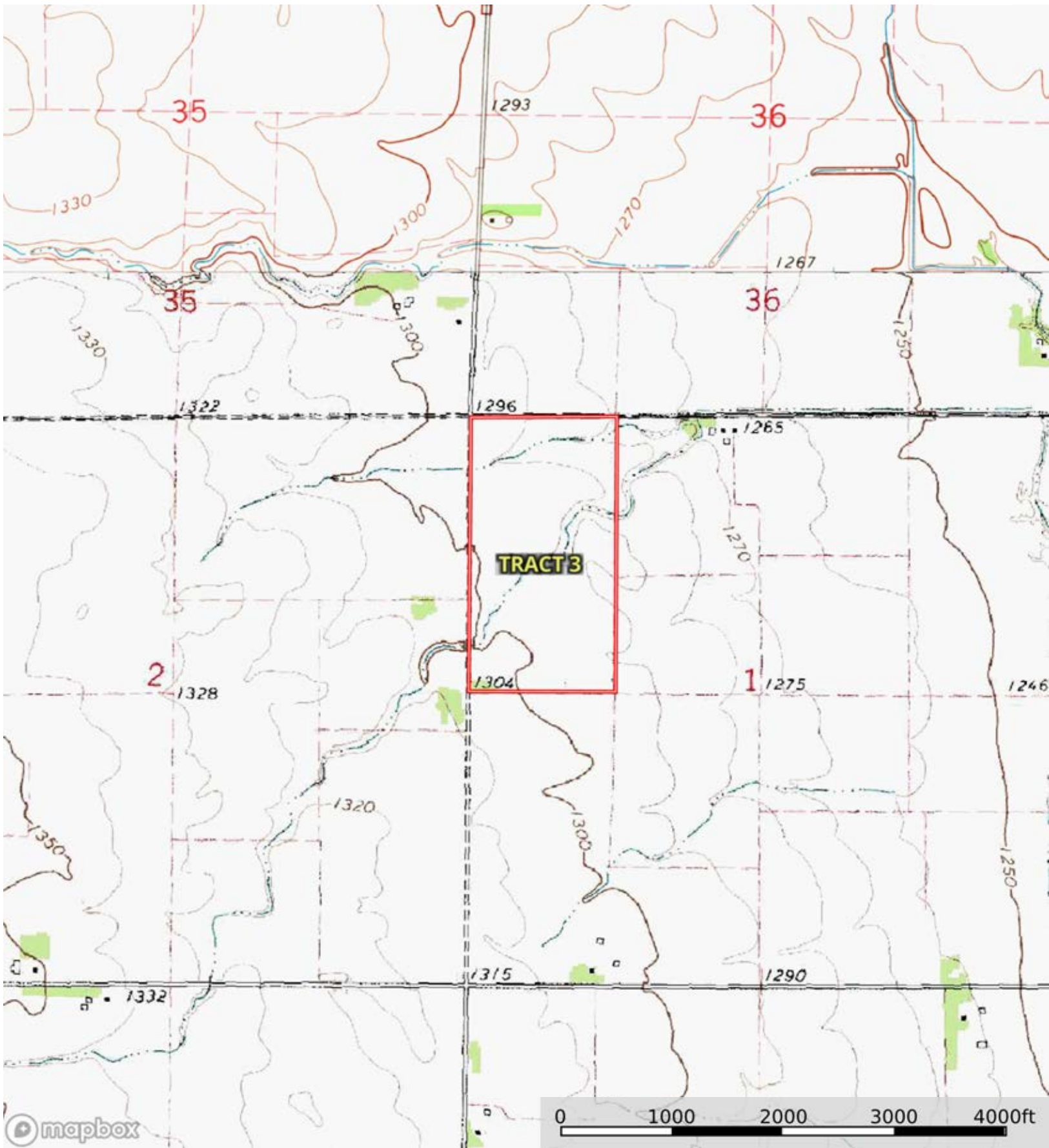
SOIL CODE	SOIL DESCRIPTION	ACRES	%	CPI	NCCPI	CAP
DkA	Davison-Tetonka-Egan complex, 0 to 3 percent slopes	44.42	59.08	75	48	2s
EgB	Egan-Ethan-Trent complex, 1 to 6 percent slopes	25.87	34.41	81	61	2e
EaA	Egan-Chancellor-Davison complex, 0 to 3 percent slopes	4.9	6.52	84	52	1
TOTALS		75.19(*)	100%	77.65	52.73	1.93


(\*) Total acres may differ in the second decimal compared to the sum of each acreage soil. This is due to a round error because we only show the acres of each soil with two decimal.





 Boundary



 Boundary