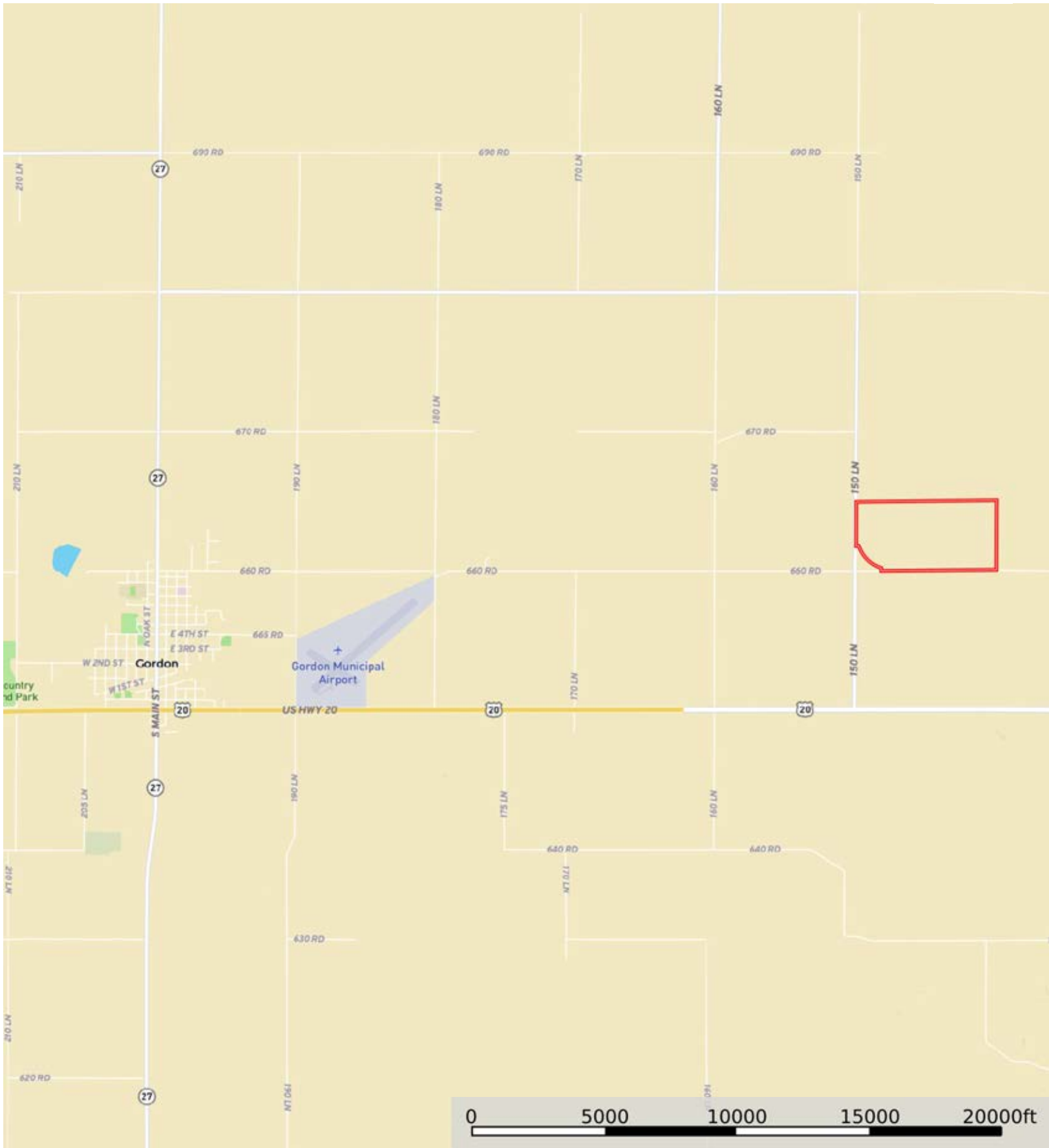
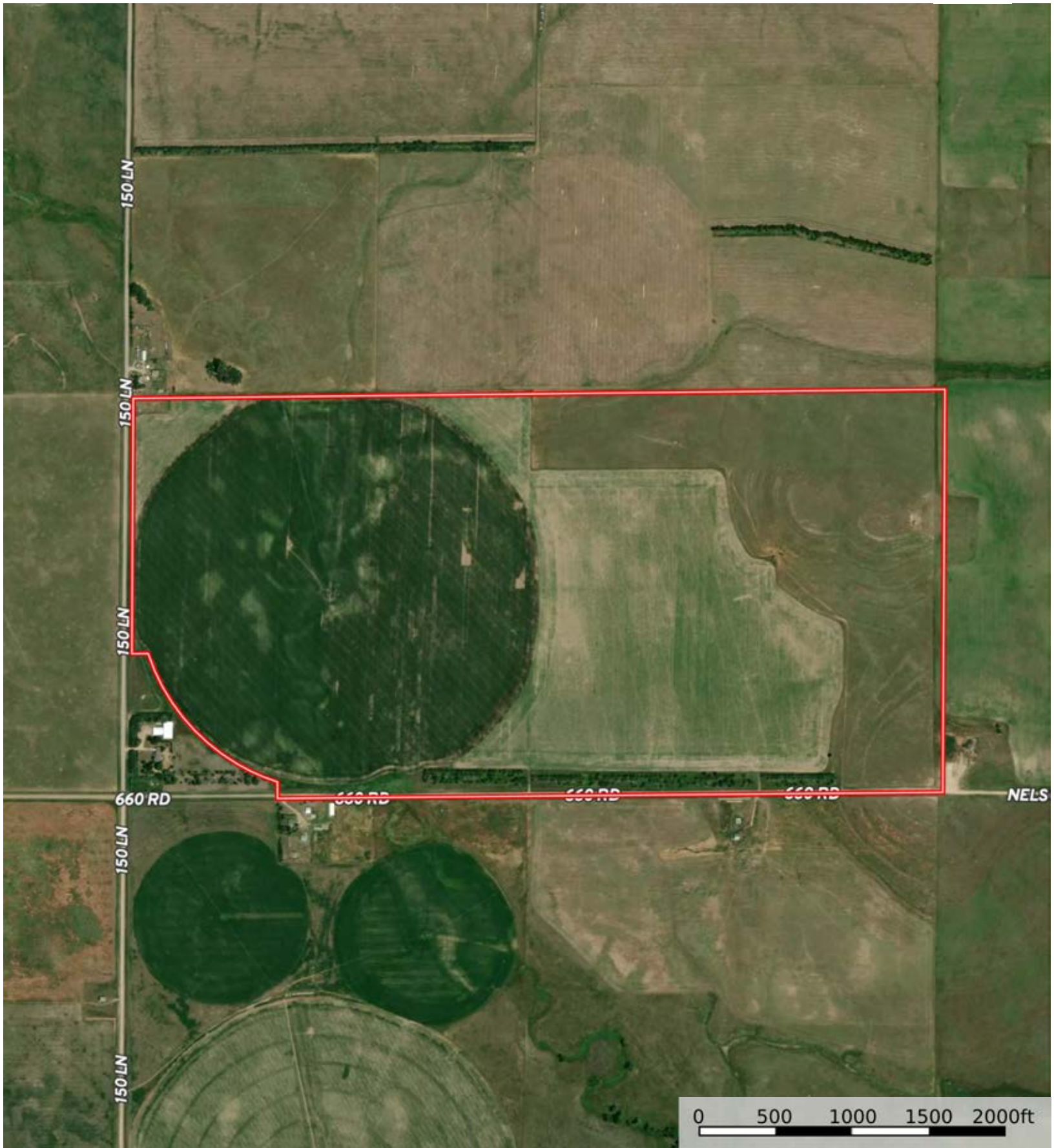



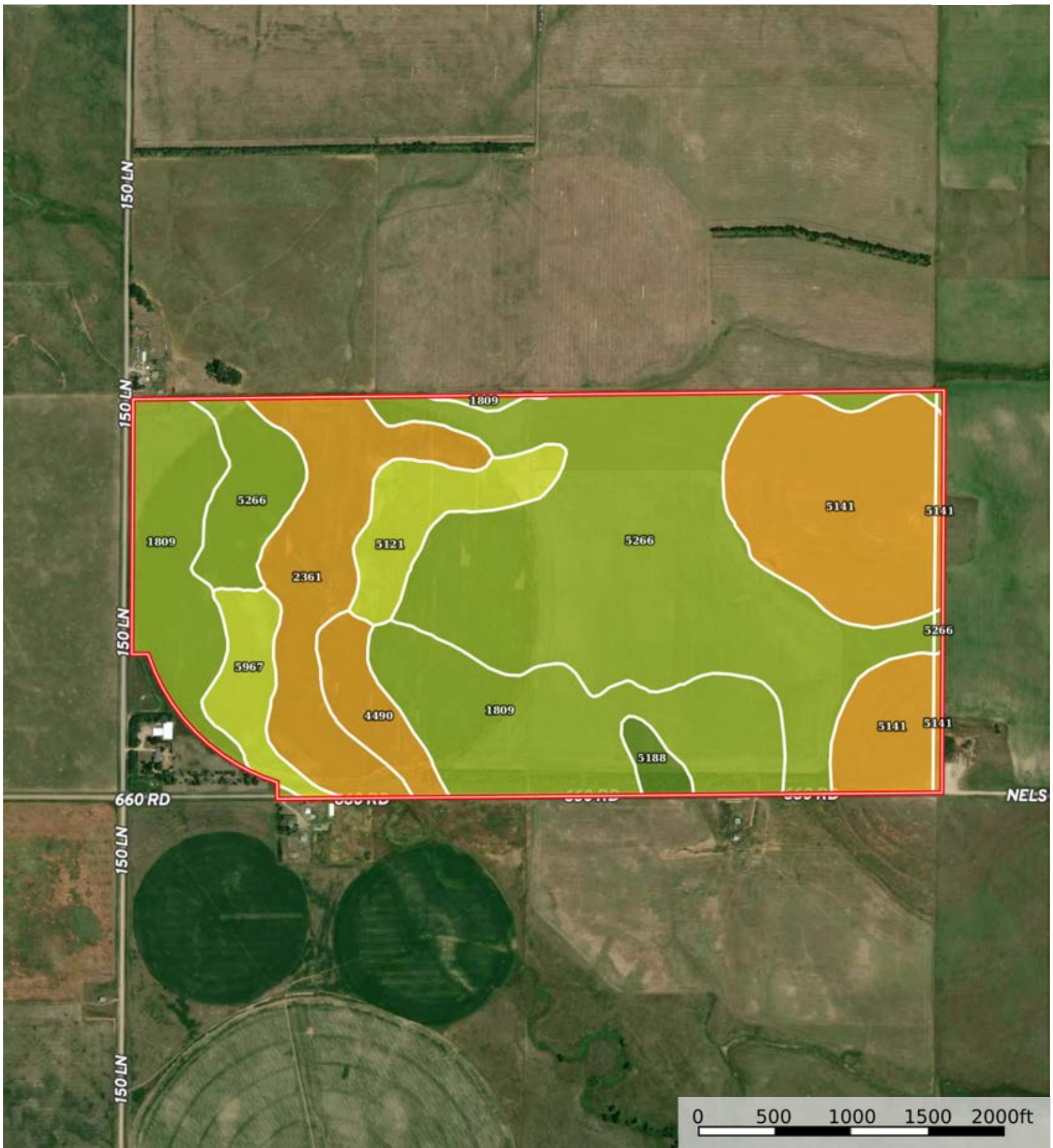
A-22153
Sheridan County, Nebraska, 310.71 AC +/-




 Boundary



 Boundary



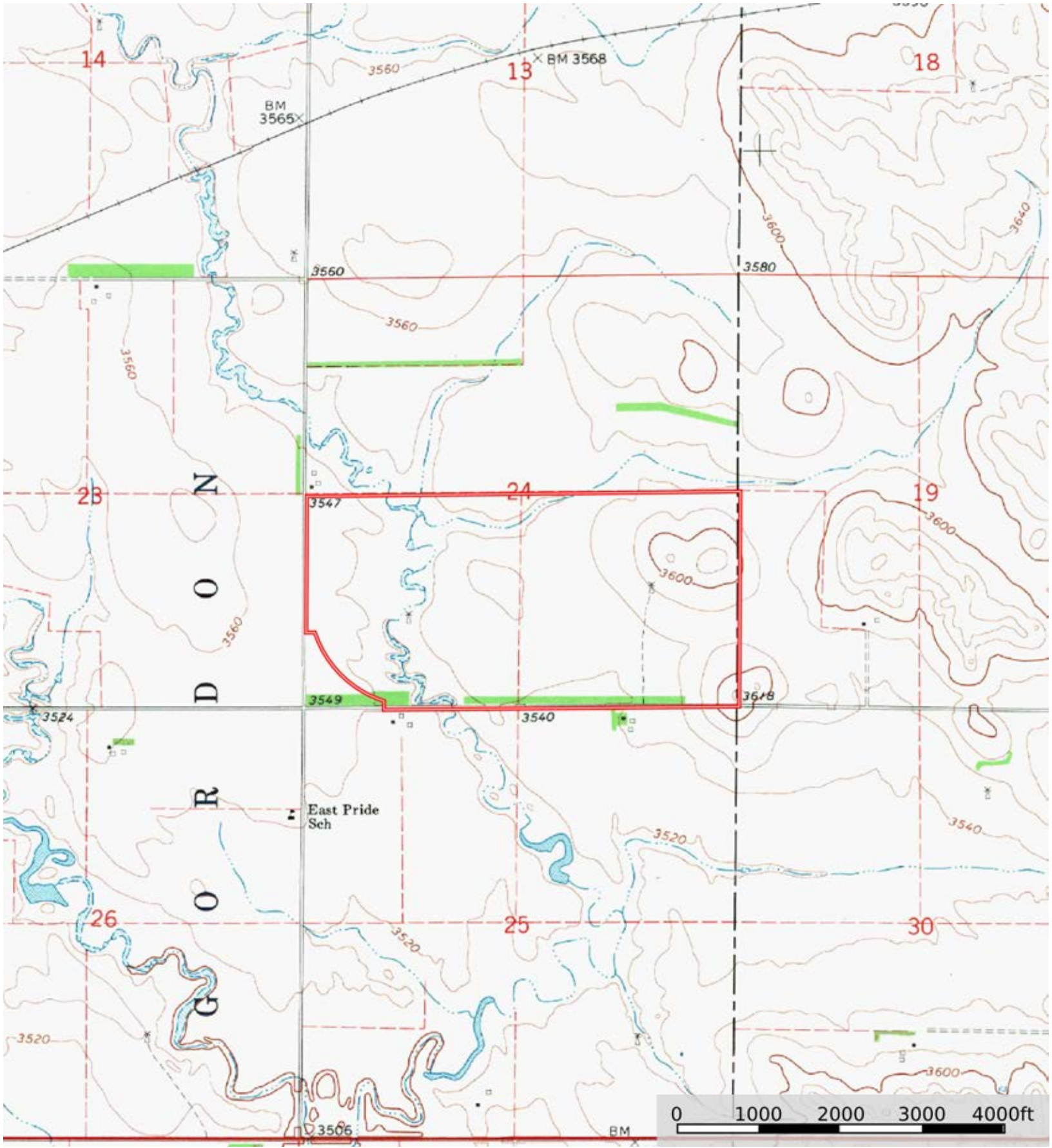
 Boundary

|  Boundary 311.71 ac

SOIL CODE	SOIL DESCRIPTION	ACRES	%	CPI	NCCPI	CAP
5266	Tuthill fine sandy loam, 3 to 6 percent slopes	114.09	36.6	0	30	3e
1809	Satanta fine sandy loam, 1 to 3 percent slopes	69.51	22.3	0	37	3e
5141	Busher-Tassel fine sandy loams, 9 to 30 percent slopes	55.17	17.7	0	24	6e
2361	Munjor fine sandy loam, channeled, frequently flooded	34.63	11.11	0	21	6w
5121	Busher fine sandy loam, 6 to 9 percent slopes	14.92	4.79	0	31	4e
5967	Jayem fine sandy loam, 6 to 9 percent slopes	10.52	3.37	55	31	4e
4490	Dunday loamy fine sand, 3 to 9 percent slopes	9.64	3.09	0	23	6e
5188	Keya loam, 0 to 2 percent slopes	3.23	1.04	0	58	2c
TOTALS		311.71(*)	100%	1.86	29.65	4.03

(*) Total acres may differ in the second decimal compared to the sum of each acreage soil. This is due to a round error because we only show the acres of each soil with two decimal.





 Boundary