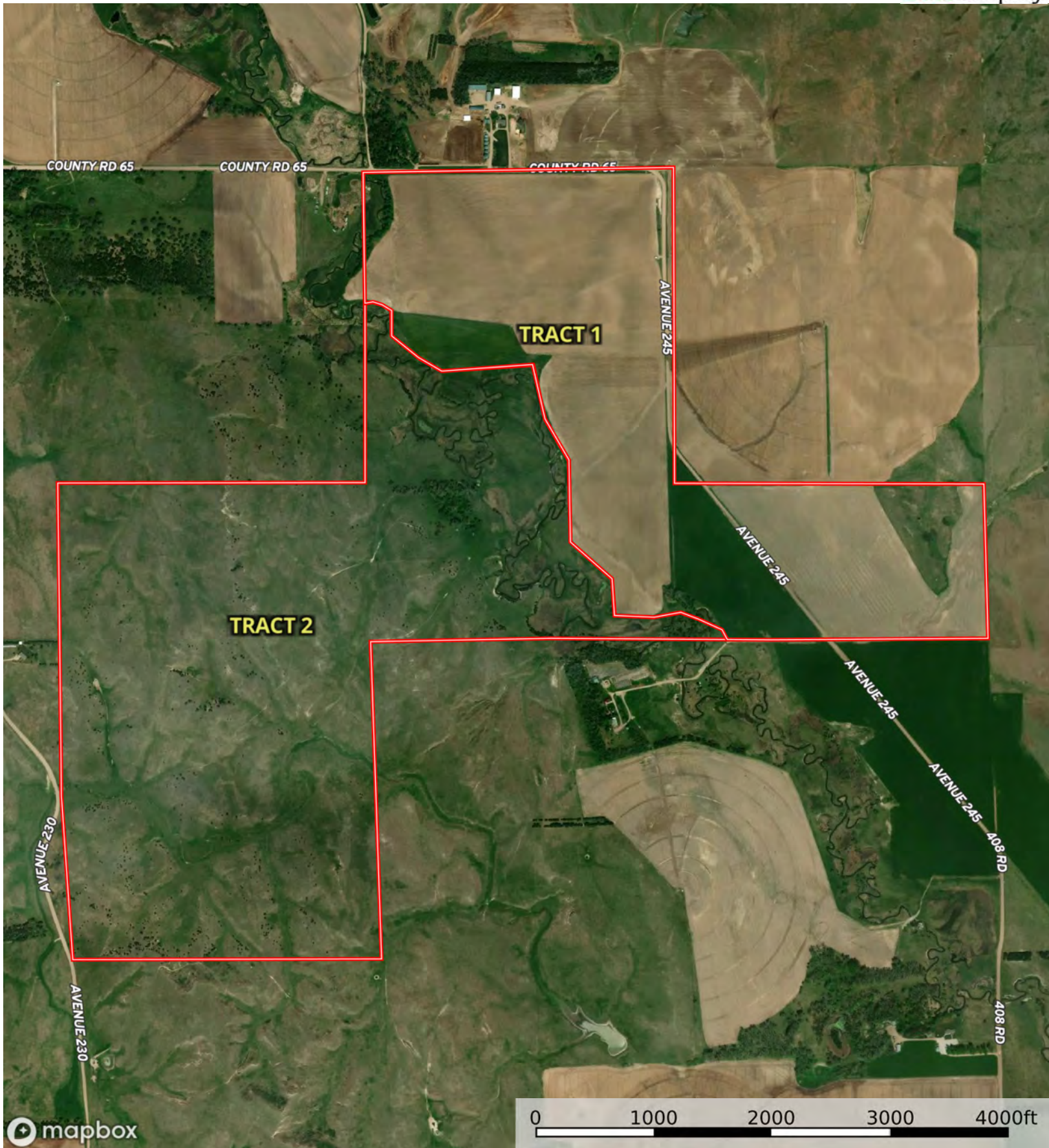


Boundary



A-22252

Logan County, Nebraska, 562.54 AC +/-

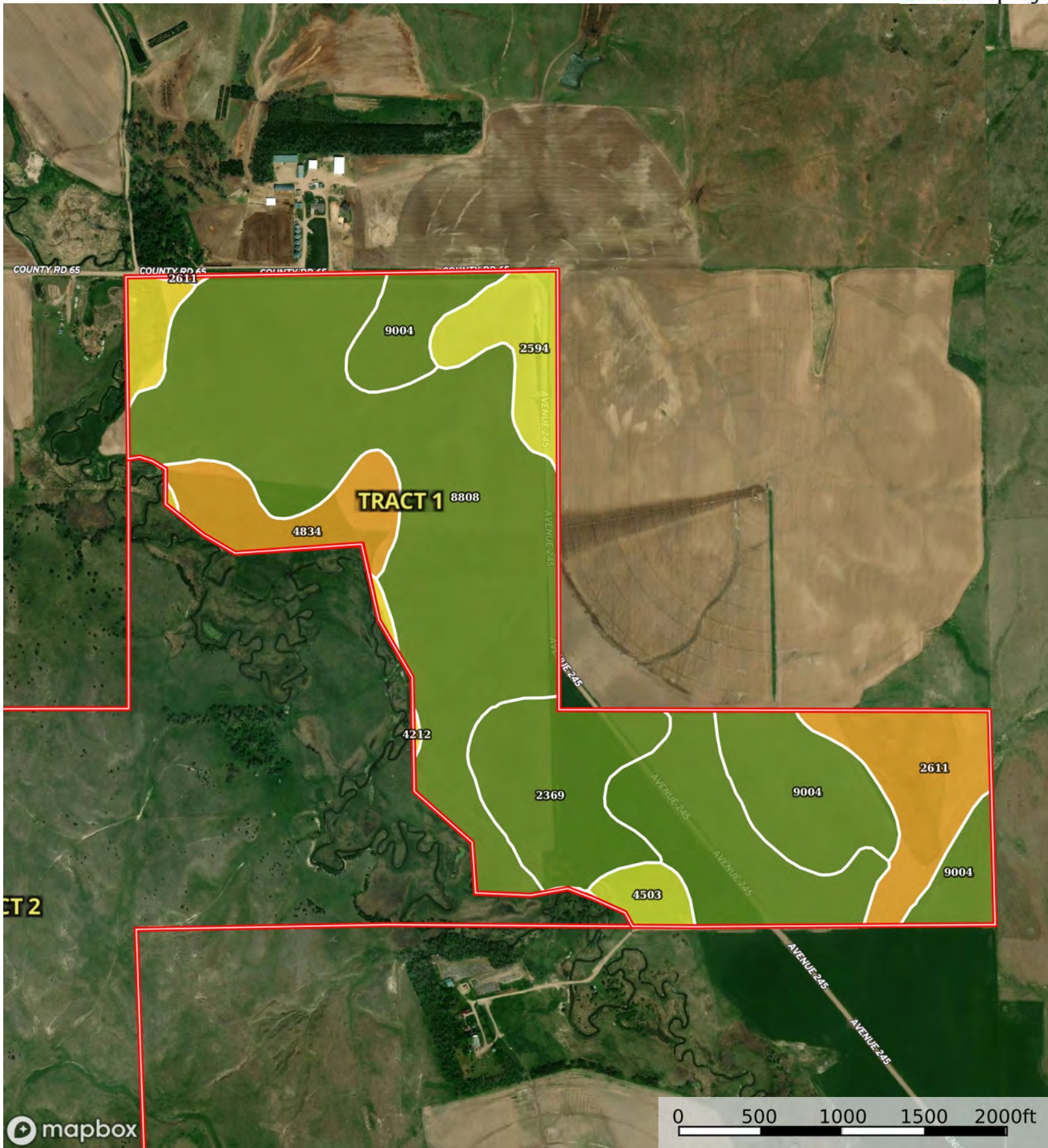


mapbox

Boundary



The information contained herein was obtained from sources deemed to be reliable. Land id™ Services makes no warranties or guarantees as to the completeness or accuracy thereof.



Boundary

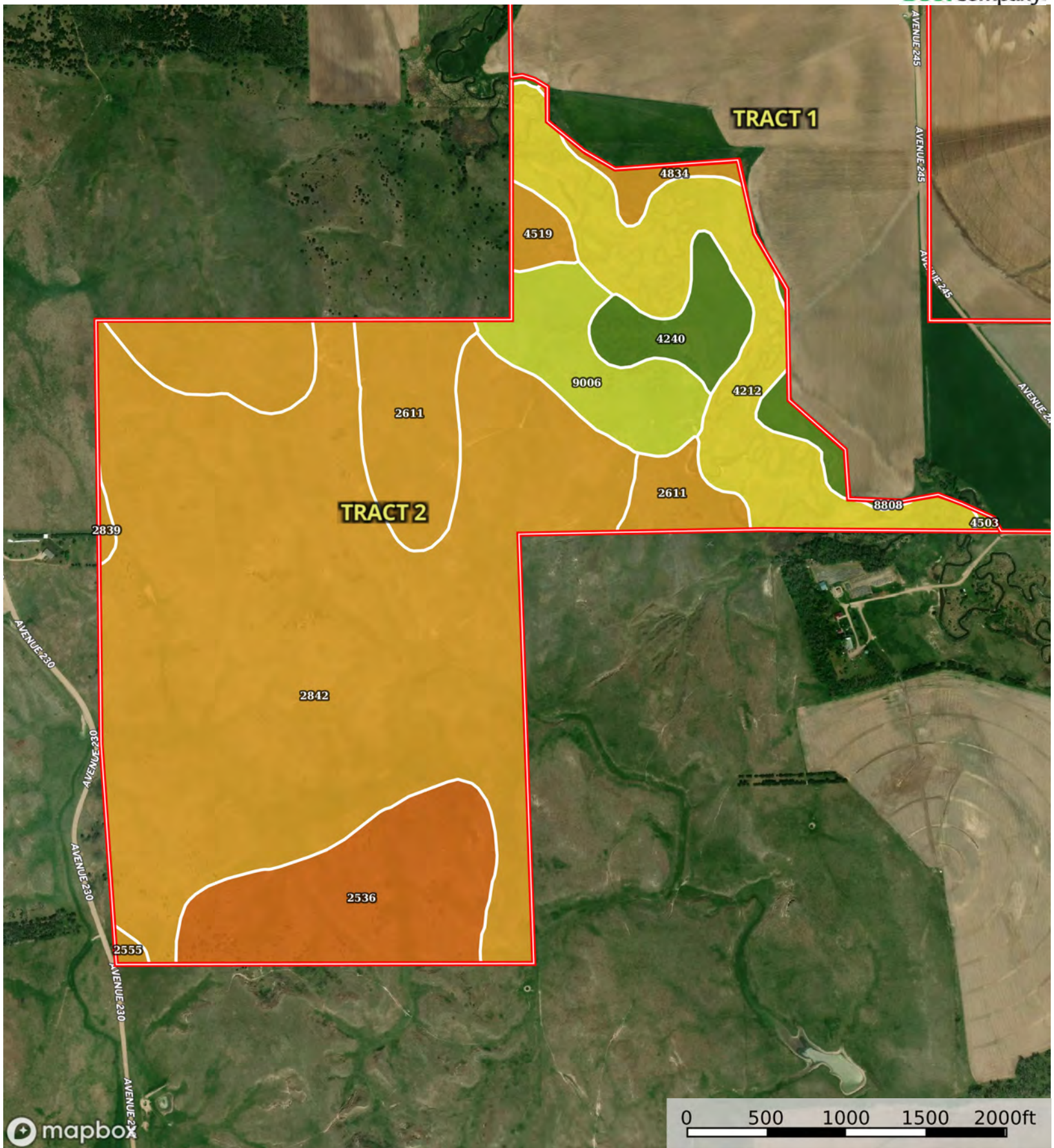


| Boundary 218.86 ac

SOIL CODE	SOIL DESCRIPTION	ACRES	%	CPI	NCCPI	CAP
8808	Anselmo fine sandy loam, terrace, 0 to 1 percent slopes	114.78	52.44	0	55	2e
9004	Anselmo fine sandy loam, 3 to 6 percent slopes	31.16	14.24	0	42	2e
2369	Munjor fine sandy loam, 0 to 2 percent slopes	22.26	10.17	0	35	2e
2611	Hersh-Valentine complex, 11 to 30 percent slopes	17.13	7.83	0	28	6e
4834	Valentine loamy fine sand, rolling, 9 to 24 percent slopes	12.94	5.91	0	28	6e
2594	Hersh and Valentine soils, 6 to 11 percent slopes	10.93	4.99	0	36	4e
4212	Almeria fine sandy loam, frequently ponded	5.55	2.54	0	6	5w
4503	Dunday-Valentine loamy fine sands, 0 to 3 percent slopes	4.11	1.88	10	31	4e
TOTALS		218.86(*)	100%	0.19	44.76	2.76

(*) Total acres may differ in the second decimal compared to the sum of each acreage soil. This is due to a round error because we only show the acres of each soil with two decimal.





Boundary



| Boundary 347.25 ac

SOIL CODE	SOIL DESCRIPTION	ACRES	%	CPI	NCCPI	CAP
2842	Uly-Sully silt loams, 17 to 30 percent slopes, eroded	188.7	54.34	0	29	6e
4212	Almeria fine sandy loam, frequently ponded	41.01	11.81	0	6	5w
2611	Hersh-Valentine complex, 11 to 30 percent slopes	38.73	11.15	0	28	6e
2536	Coly silt loam, 30 to 60 percent slopes	35.6	10.25	0	11	7e
9006	Anselmo fine sandy loam, 6 to 11 percent slopes	18.77	5.41	0	53	4e
4240	Ord fine sandy loam, rarely flooded	11.14	3.21	0	41	2w
8808	Anselmo fine sandy loam, terrace, 0 to 1 percent slopes	3.87	1.11	0	55	2e
4519	Els and Elsmere fine sands, 0 to 3 percent slopes	3.81	1.1	0	27	6e
4834	Valentine loamy fine sand, rolling, 9 to 24 percent slopes	3.61	1.04	0	28	6e
2839	Uly-Holdrege silt loams, 11 to 17 percent slopes	0.89	0.26	0	66	6e
2555	Coly-Uly silt loams, 11 to 17 percent slopes, eroded	0.79	0.23	0	56	6e
4503	Dunday-Valentine loamy fine sands, 0 to 3 percent slopes	0.33	0.1	10	31	4e
TOTALS		347.2 5(*)	100%	0.01	26.42	5.7









(*) Total acres may differ in the second decimal compared to the sum of each acreage soil. This is due to a round error because we only show the acres of each soil with two decimal.

Capability Legend

Increased Limitations and Hazards

Decreased Adaptability and Freedom of Choice Users

Land, Capability

								
	1	2	3	4	5	6	7	8
'Wild Life'	•	•	•	•	•	•	•	•
Forestry	•	•	•	•	•	•	•	
Limited	•	•	•	•	•	•	•	
Moderate	•	•	•	•	•	•		
Intense	•	•	•	•	•			
Limited	•	•	•	•				
Moderate	•	•	•					
Intense	•	•						
Very Intense	•							

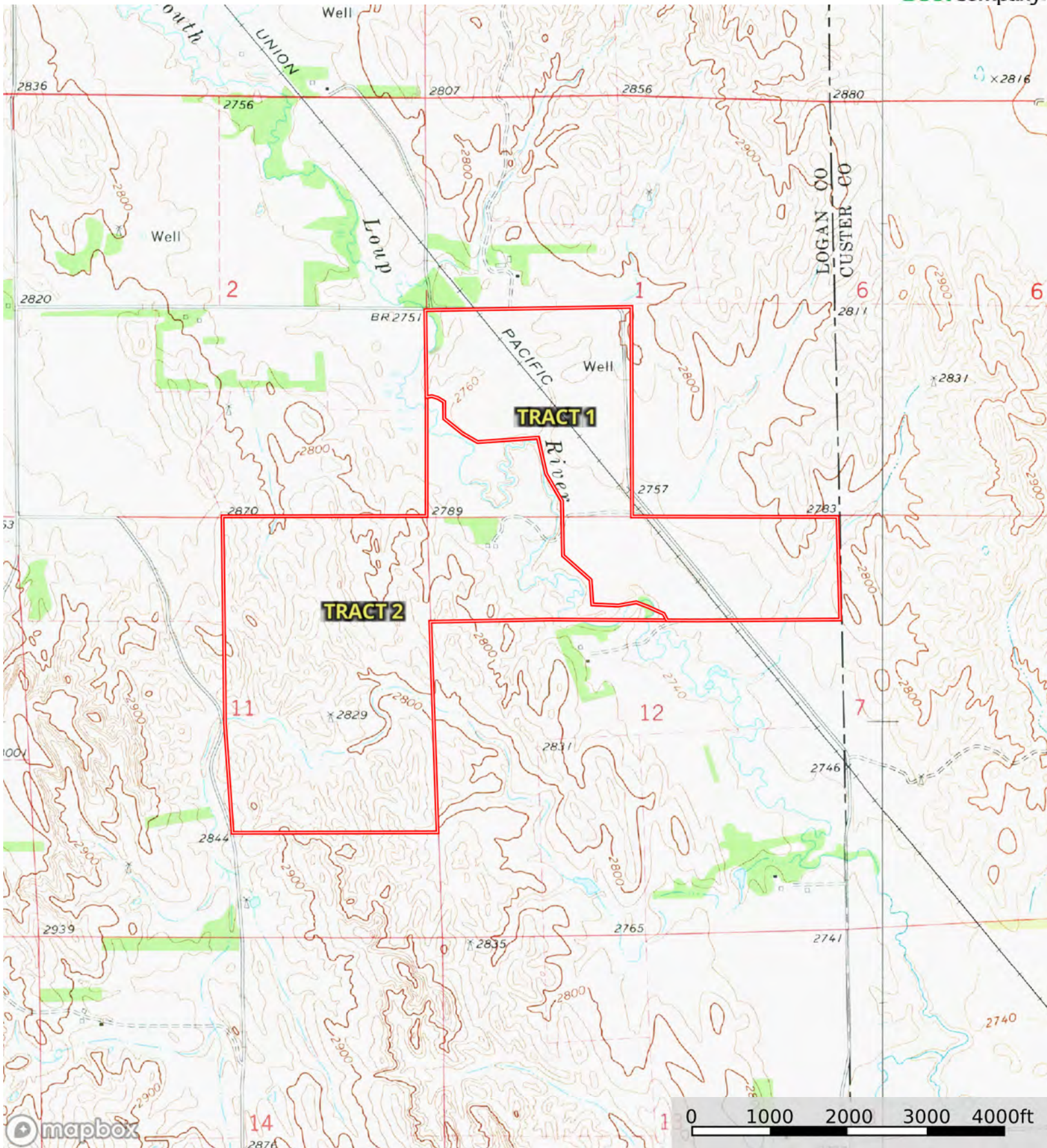
Grazing Cultivation

(c) climatic limitations (e) susceptibility to erosion

(s) soil limitations within the rooting zone (w) excess of water

A-22252

Logan County, Nebraska, 562.54 AC +/-



Boundary



The information contained herein was obtained from sources deemed to be reliable. Land id™ Services makes no warranties or guarantees as to the completeness or accuracy thereof.