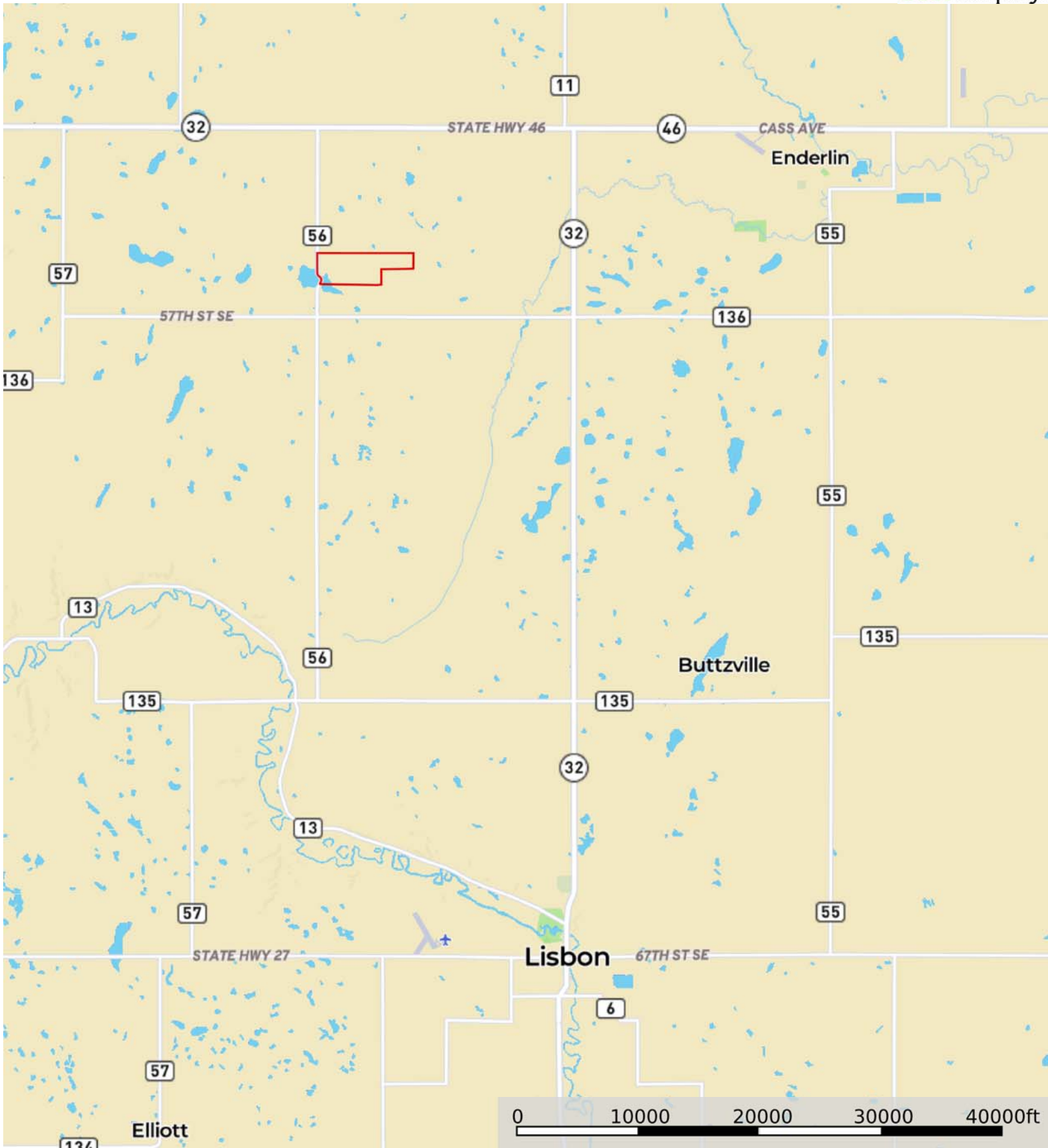
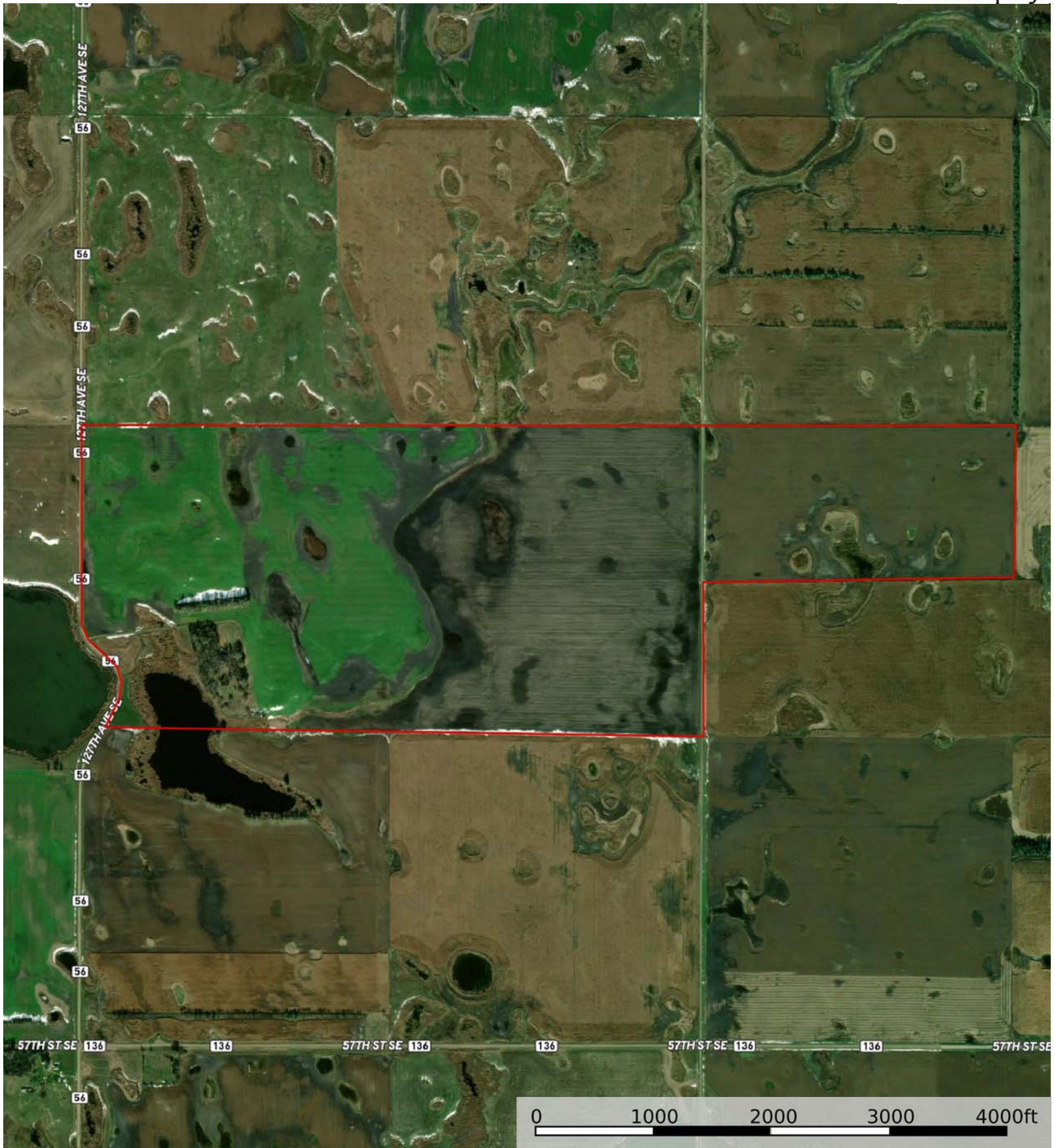


A-22260

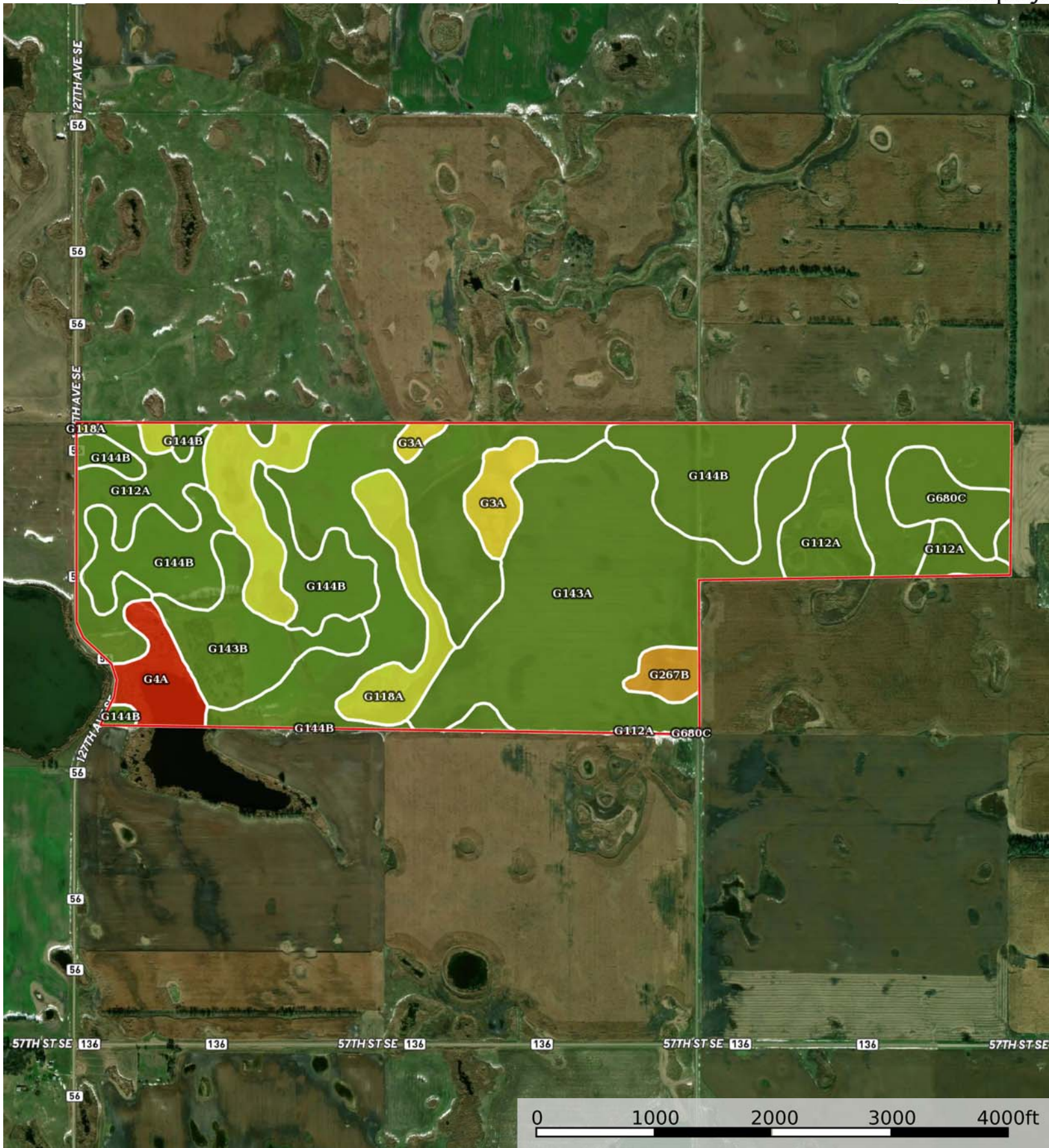
Ransom County, North Dakota, 399 AC +/-



Boundary



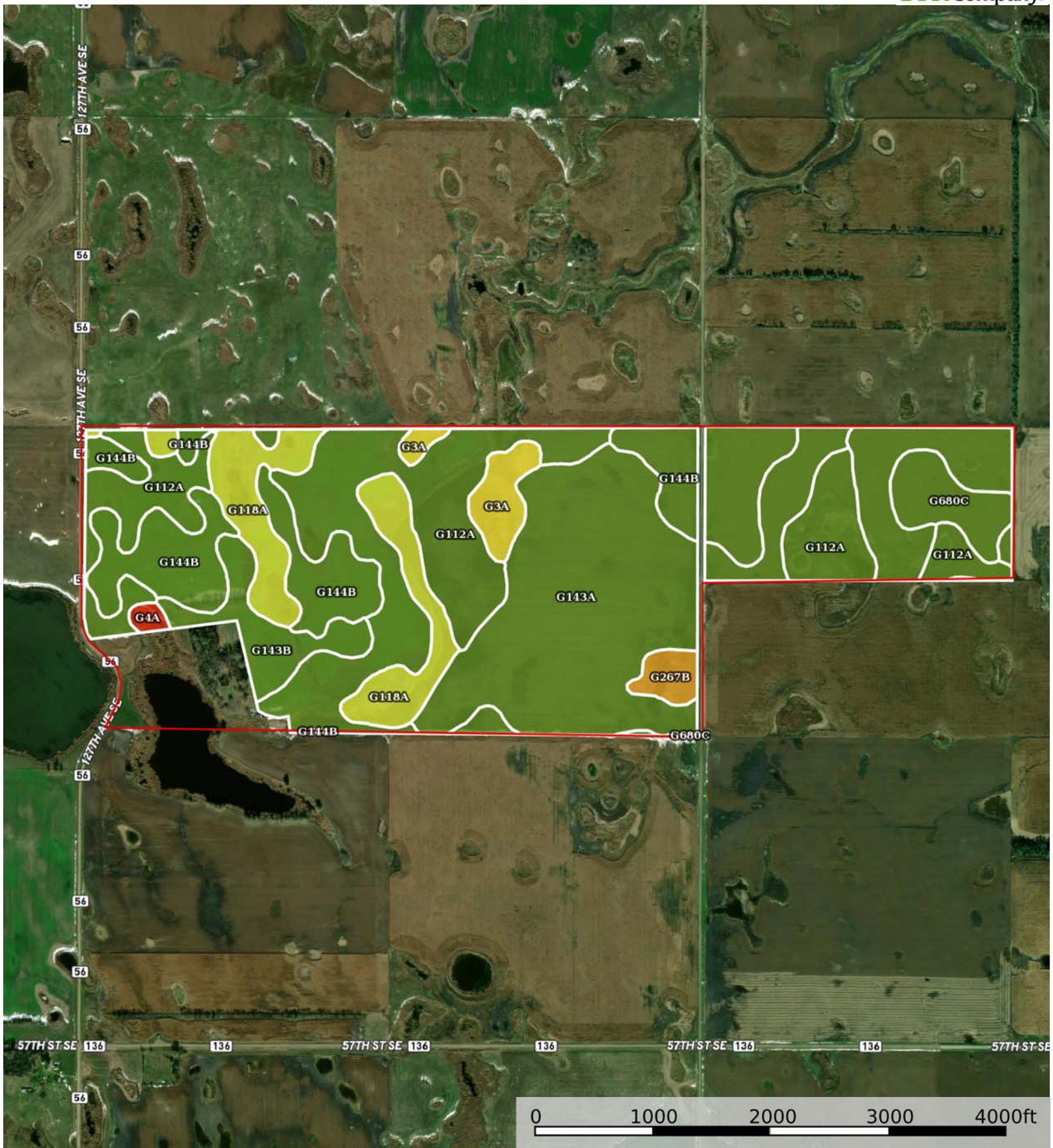
 Boundary



 Boundary

SOIL CODE	SOIL DESCRIPTION	ACRES	%	CPI	CAP
G112A	Hamerly-Tonka-Parnell complex, 0 to 3 percent slopes	109.4	27.94	58	2e
G144B	Barnes-Buse loams, 3 to 6 percent slopes	84.6	21.6	69	2e
G680C	Barnes-Sioux complex, 3 to 9 percent slopes	12.5	3.2	55	2e
G4A	Southam silty clay loam, 0 to 1 percent slopes	11.7	2.99	9	8w
G267B	Sioux-Renshaw complex, 0 to 6 percent slopes	5.3	1.35	29	6s
G143A	Barnes-Svea loams, 0 to 3 percent slopes	99.8	25.48	85	2c
G118A	Vallers loam, saline, 0 to 1 percent slopes	35.0	8.94	42	4w
G3A	Parnell silty clay loam, 0 to 1 percent slopes	9.9	2.54	25	5w
G143B	Barnes-Svea loams, 3 to 6 percent slopes	23.4	5.96	75	2e
TOTALS		391.6	100%	64.05	2.49

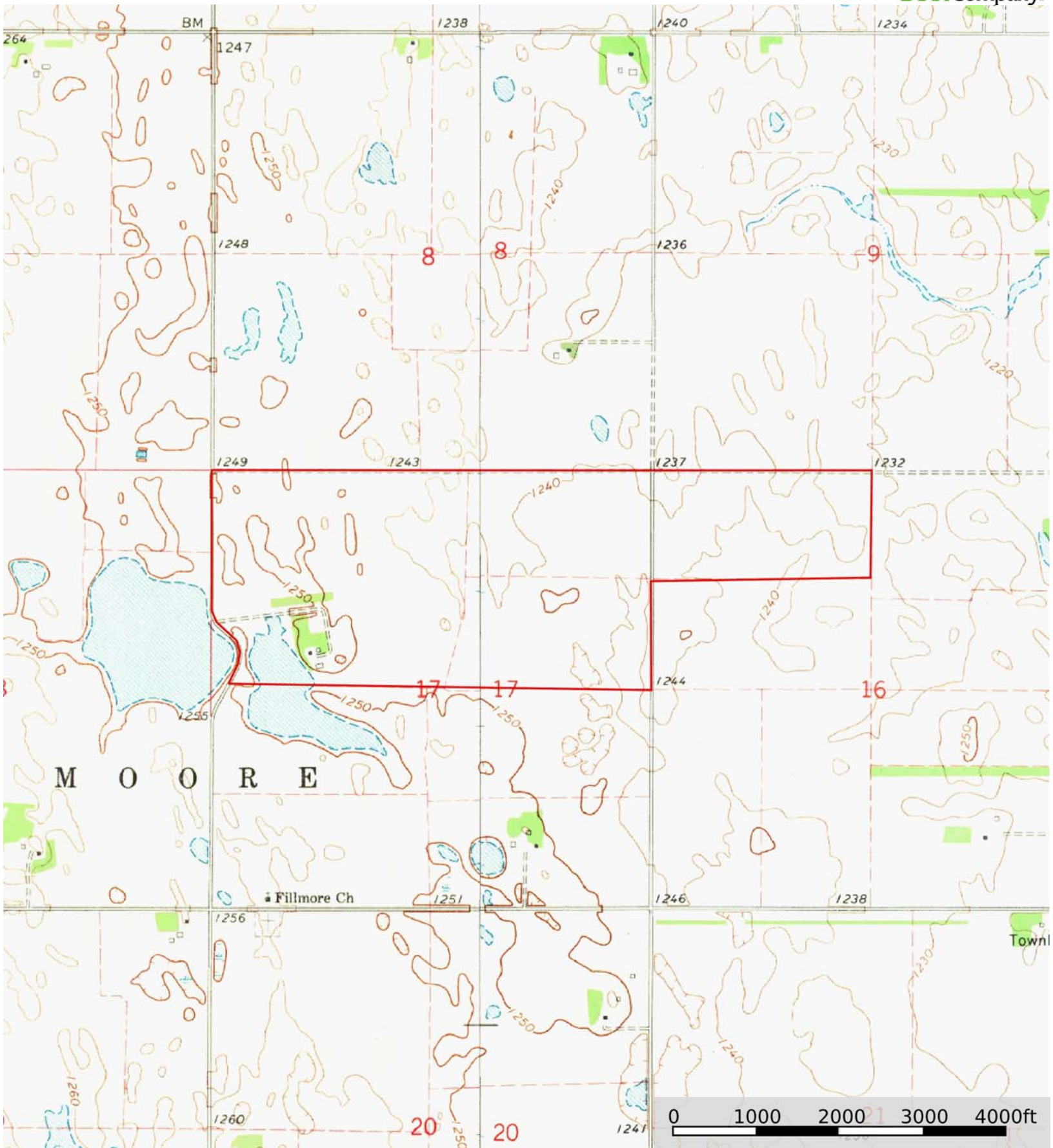




 Boundary

SOIL CODE	SOIL DESCRIPTION	ACRES	%	CPI	CAP
G112A	Hamerly-Tonka-Parnell complex, 0 to 3 percent slopes	102.7	28.56	58	2e
G144B	Barnes-Buse loams, 3 to 6 percent slopes	80.9	22.48	69	2e
G680C	Barnes-Sioux complex, 3 to 9 percent slopes	12.4	3.44	55	2e
G4A	Southam silty clay loam, 0 to 1 percent slopes	1.5	0.43	9	8w
G267B	Sioux-Renshaw complex, 0 to 6 percent slopes	4.9	1.35	29	6s
G143A	Barnes-Svea loams, 0 to 3 percent slopes	98.2	27.28	85	2c
G118A	Vallers loam, saline, 0 to 1 percent slopes	34.1	9.48	42	4w
G3A	Parnell silty clay loam, 0 to 1 percent slopes	9.8	2.72	25	5w
G143B	Barnes-Svea loams, 3 to 6 percent slopes	15.3	4.26	75	2e
TOTALS		359.8	100%	65.44	2.35





 Boundary