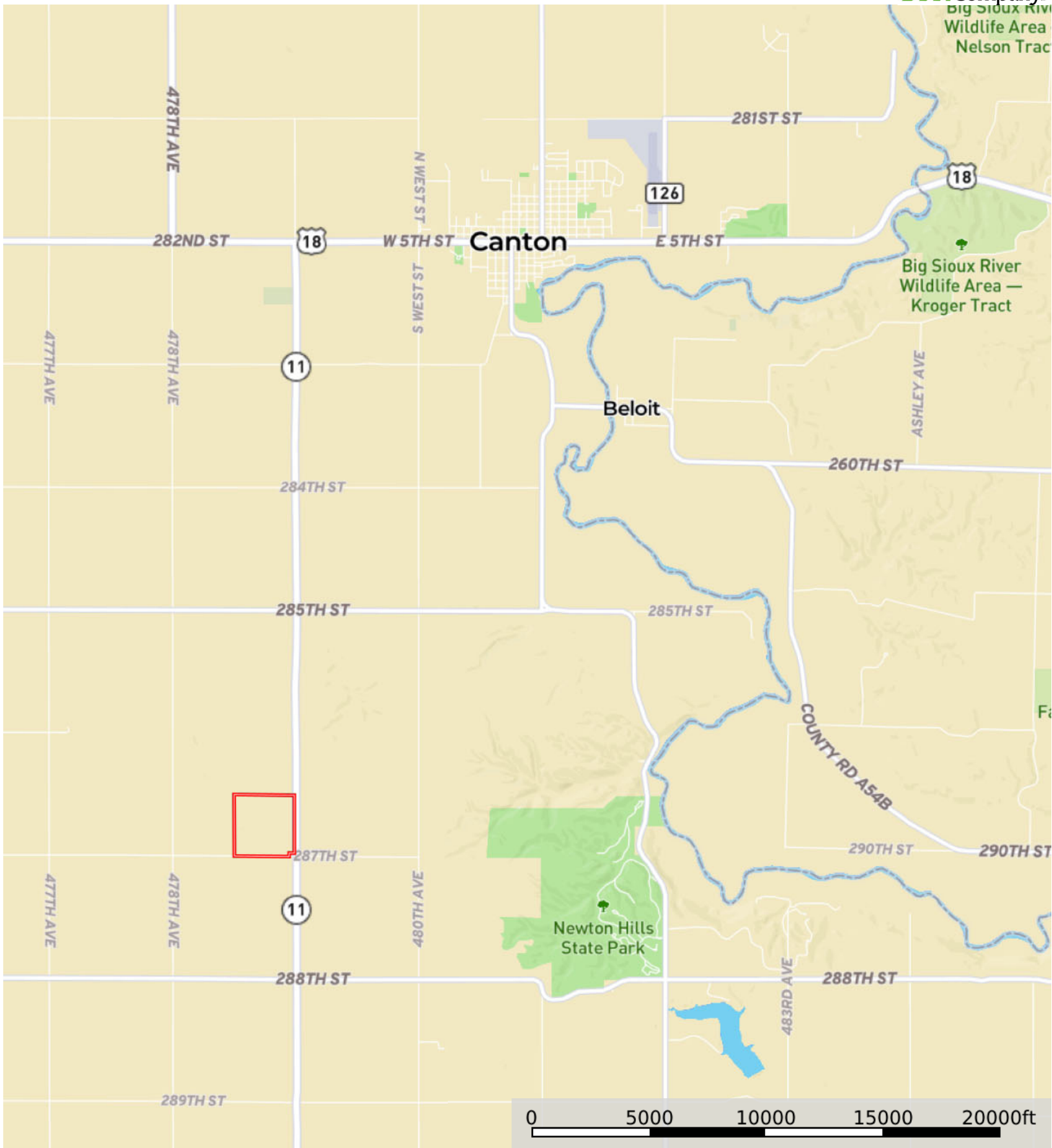


A-22299

Lincoln County, South Dakota, 156.99 AC +/-



Big Sioux River
Wildlife Area
Nelson Tract




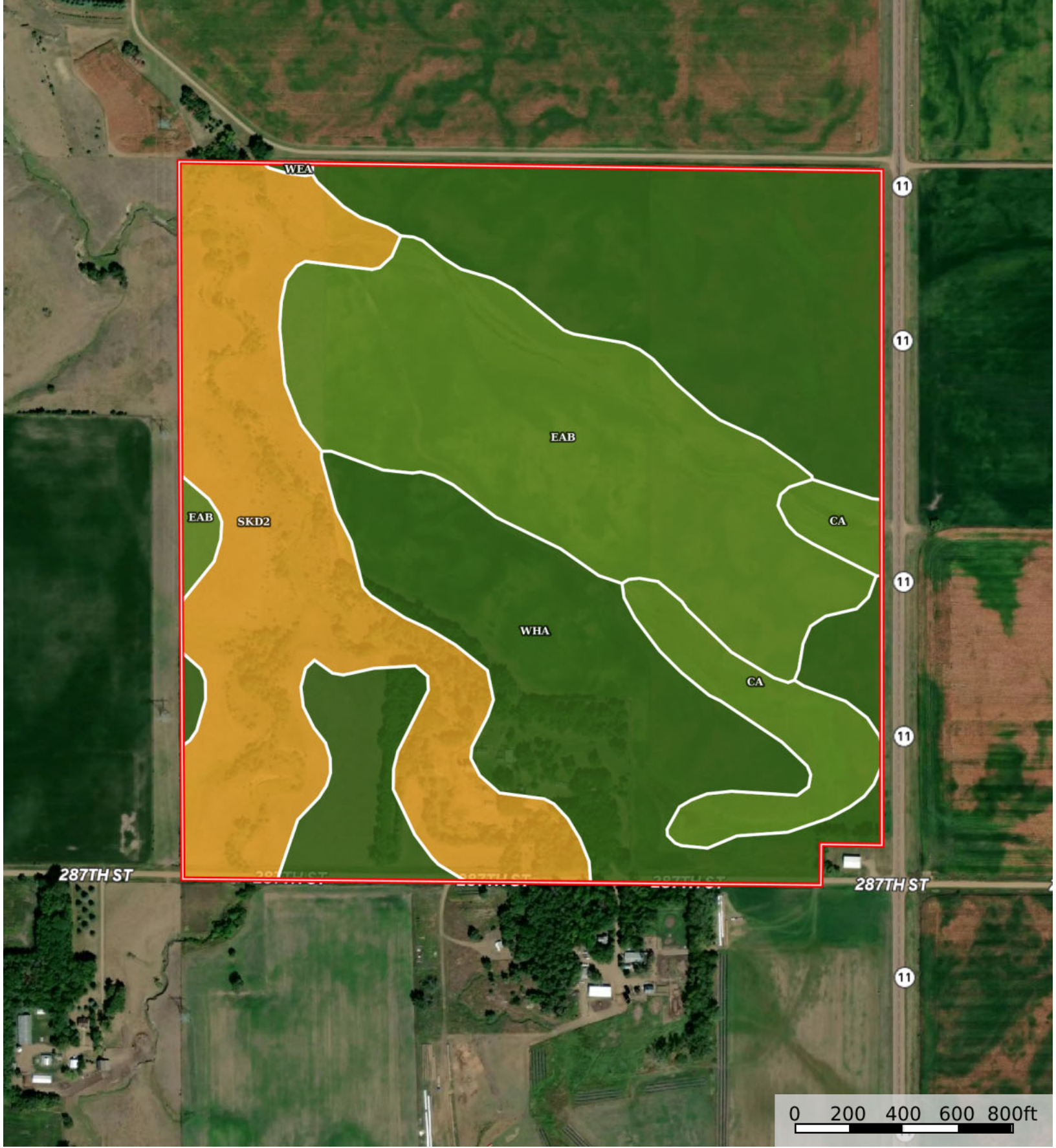
Boundary



The information contained herein was obtained from sources deemed to be reliable. Land id™ Services makes no warranties or guarantees as to the completeness or accuracy thereof.



 Boundary

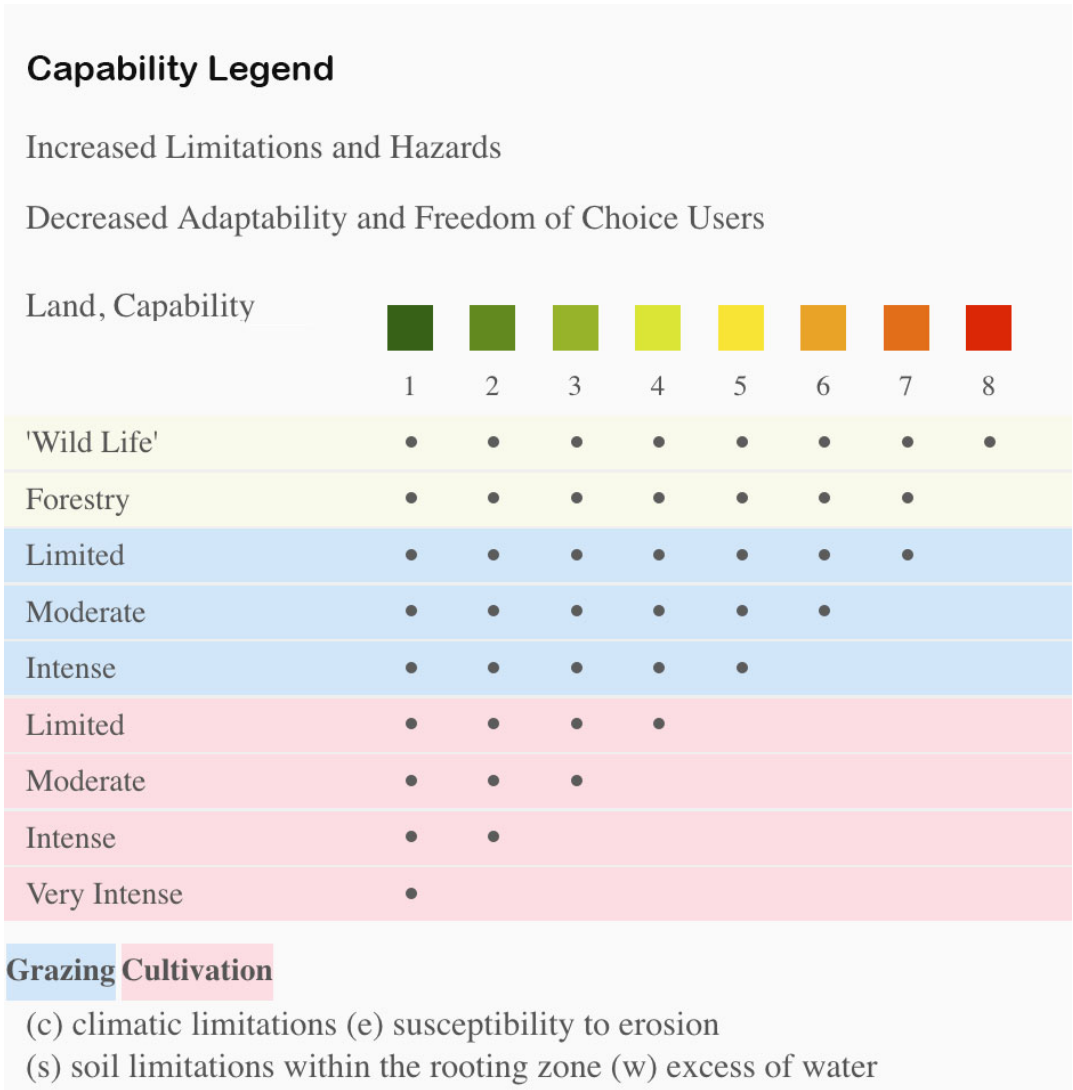


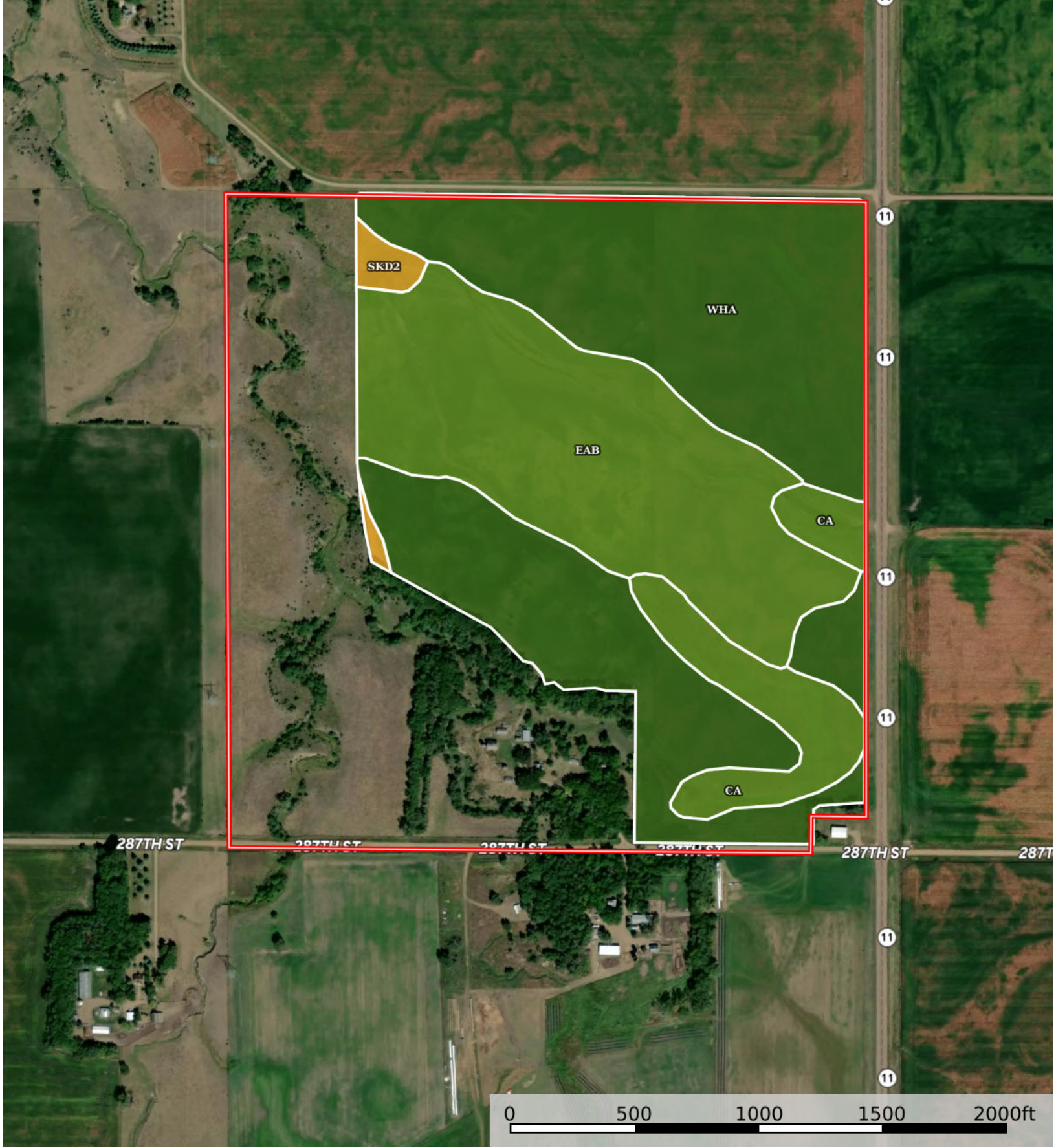
Boundary

| Boundary 155.2 ac

SOIL CODE	SOIL DESCRIPTION	ACRES	%	CPI	NCCPI	CAP
WhA	Wentworth-Chancellor silty clay loams, 0 to 2 percent slopes	69.75	44.94	89	56	1
SkD2	Shindler-Egan complex, 9 to 15 percent slopes, eroded	38.57	24.85	47	49	6e
EaB	Egan silty clay loam, 3 to 6 percent slopes	37.14	23.93	83	60	2e
Ca	Chancellor-Tetonka complex, 0 to 2 percent slopes	9.6	6.19	75	60	2w
WeA	Wentworth silty clay loam, 0 to 2 percent slopes	0.14	0.09	93	69	1
TOTALS		155.2(*)	100%	76.26	55.48	2.54

(*) Total acres may differ in the second decimal compared to the sum of each acreage soil. This is due to a round error because we only show the acres of each soil with two decimal.





Boundary

Boundary 100.42 ac

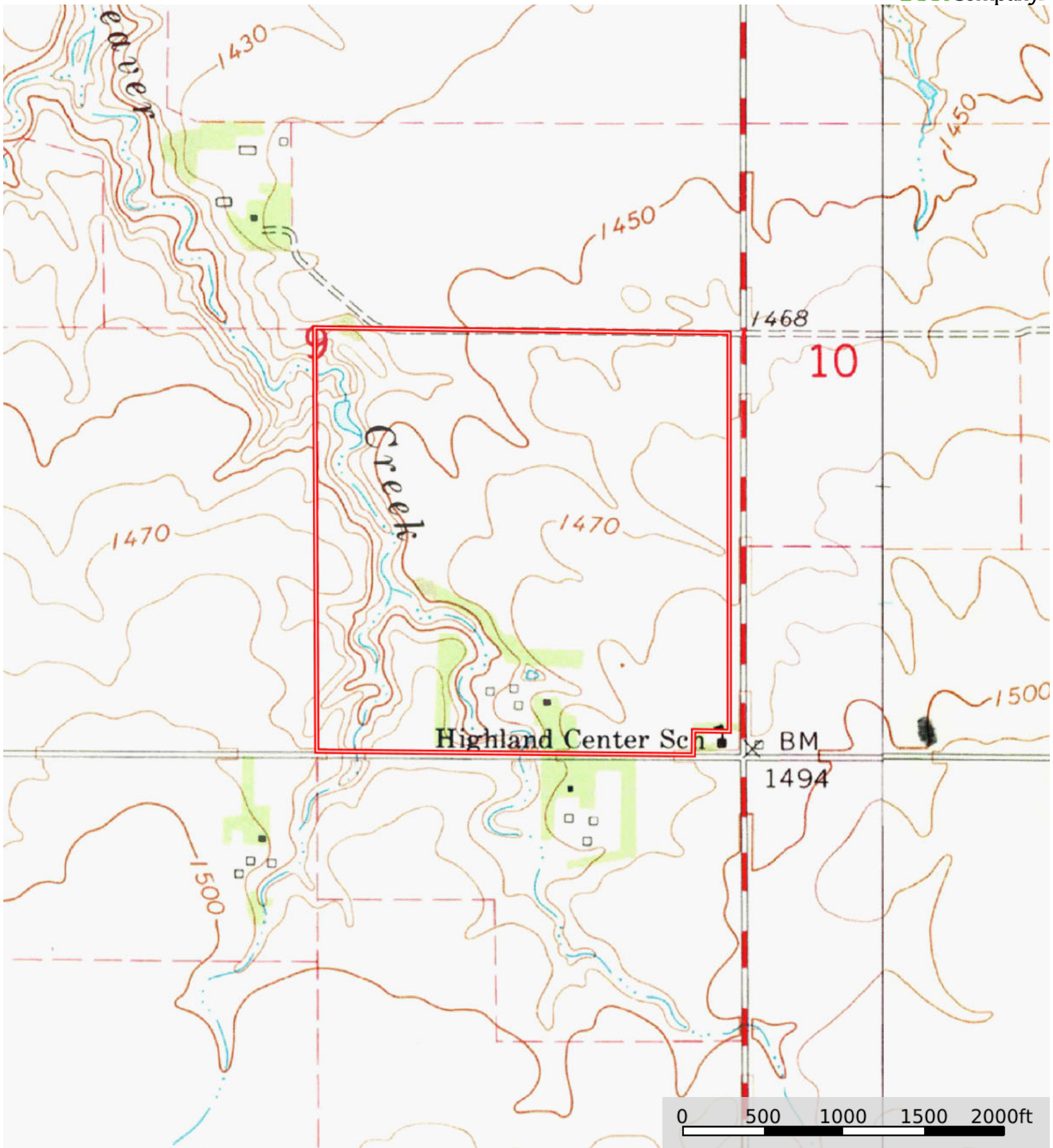
SOIL CODE	SOIL DESCRIPTION	ACRES	%	CPI	NCCPI	CAP
WhA	Wentworth-Chancellor silty clay loams, 0 to 2 percent slopes	55.17	54.94	89	56	1
EaB	Egan silty clay loam, 3 to 6 percent slopes	34.17	34.03	83	60	2e
Ca	Chancellor-Tetonka complex, 0 to 2 percent slopes	9.54	9.5	75	60	2w
SkD2	Shindler-Egan complex, 9 to 15 percent slopes, eroded	1.54	1.53	47	49	6e
TOTALS		100.42(*)	100%	84.99	57.64	1.51

(*) Total acres may differ in the second decimal compared to the sum of each acreage soil. This is due to a round error because we only show the acres of each soil with two decimal.



A-22299

Lincoln County, South Dakota, 156.99 AC +/-



Boundary