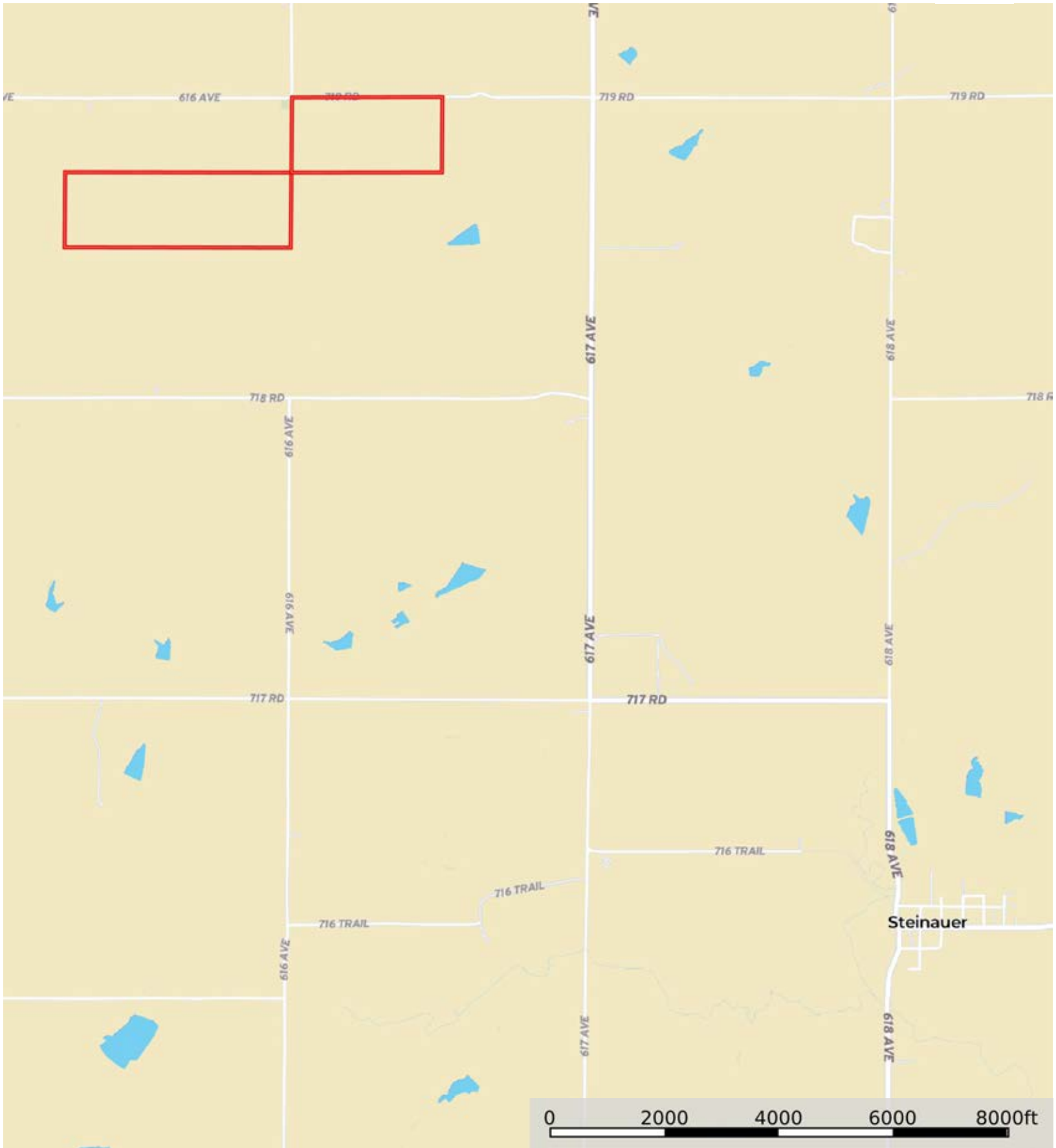
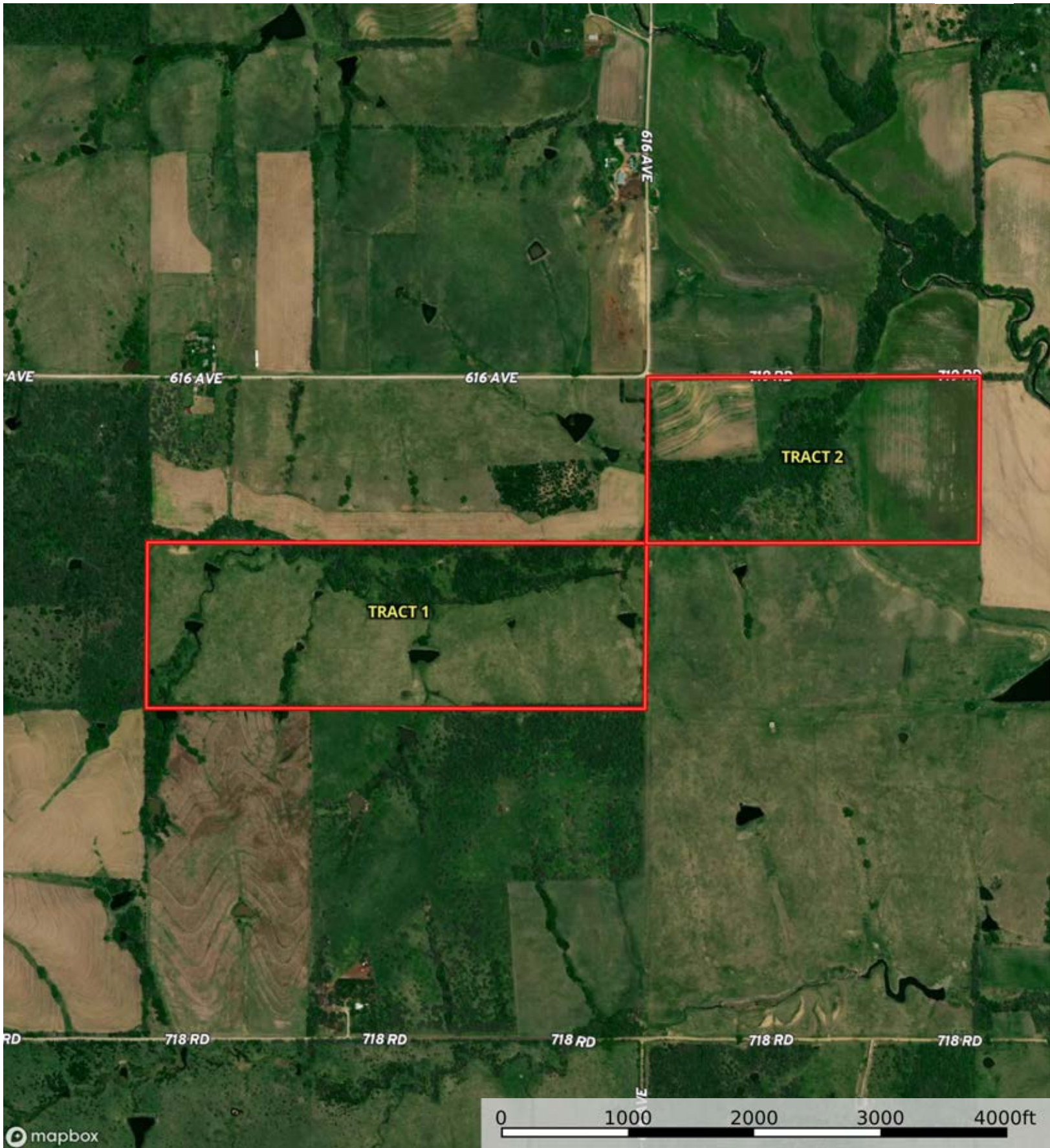


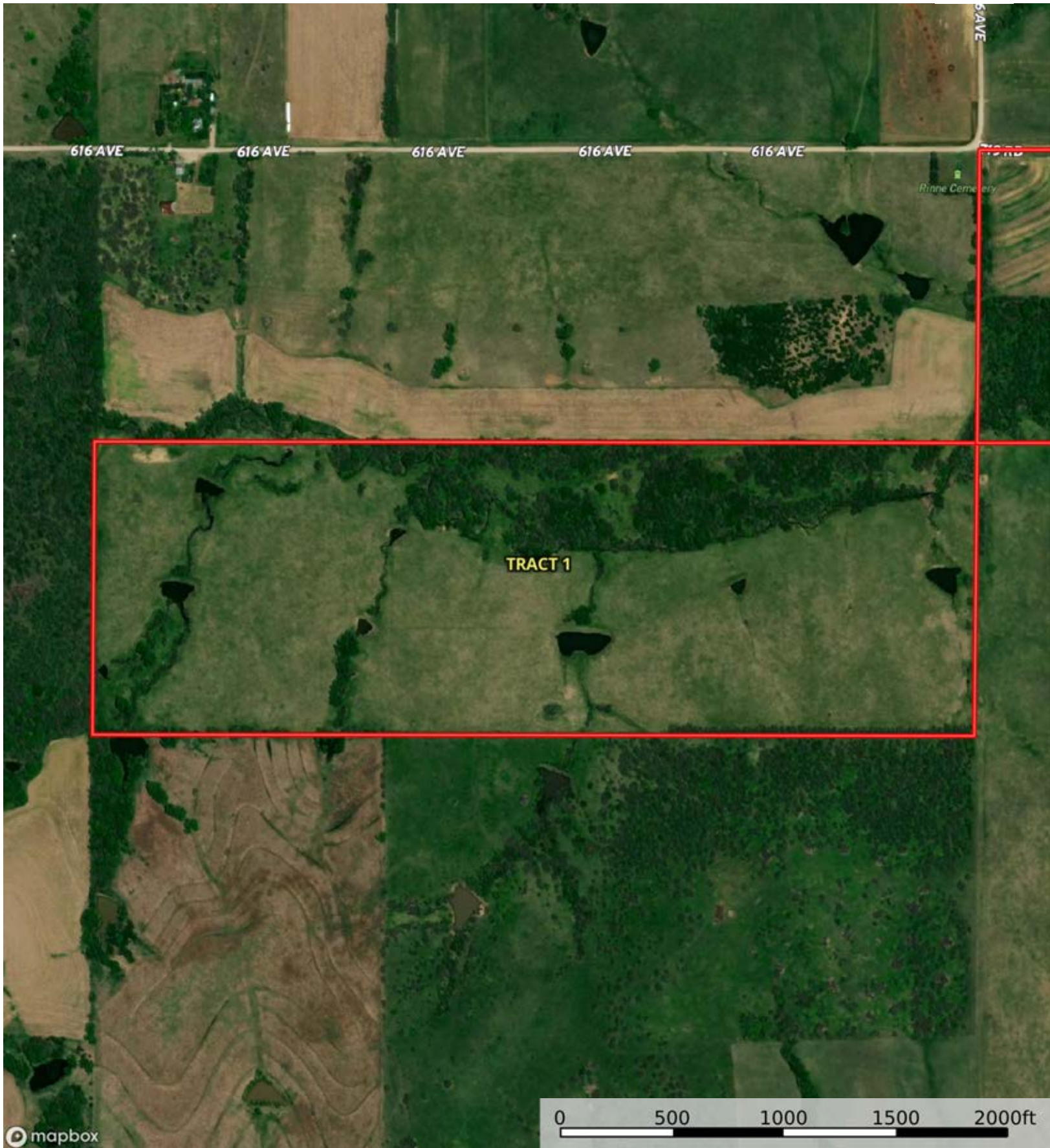
A-22462
Pawnee County, Nebraska, 200 AC +/-



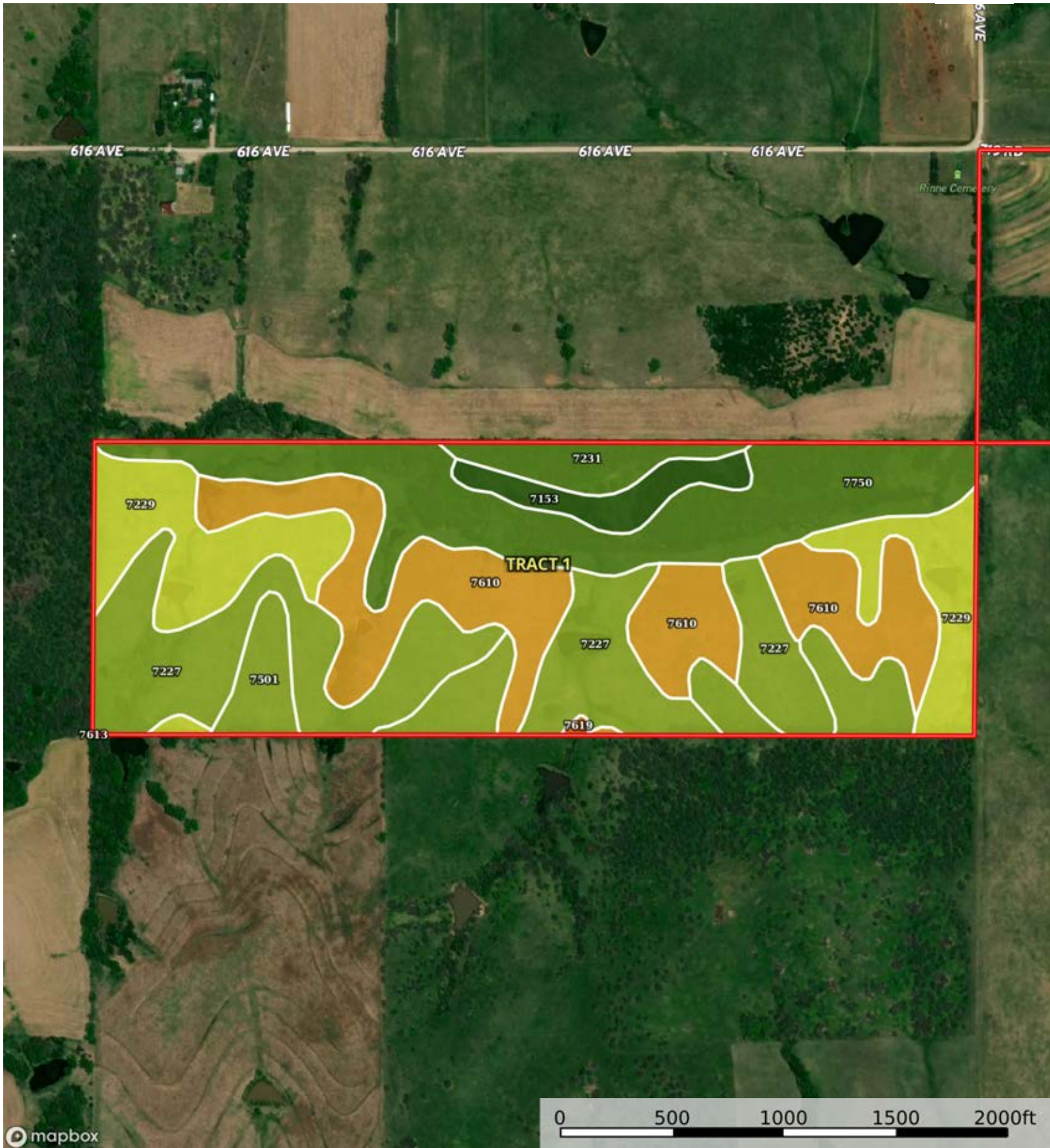
 Boundary



 Boundary



 Boundary



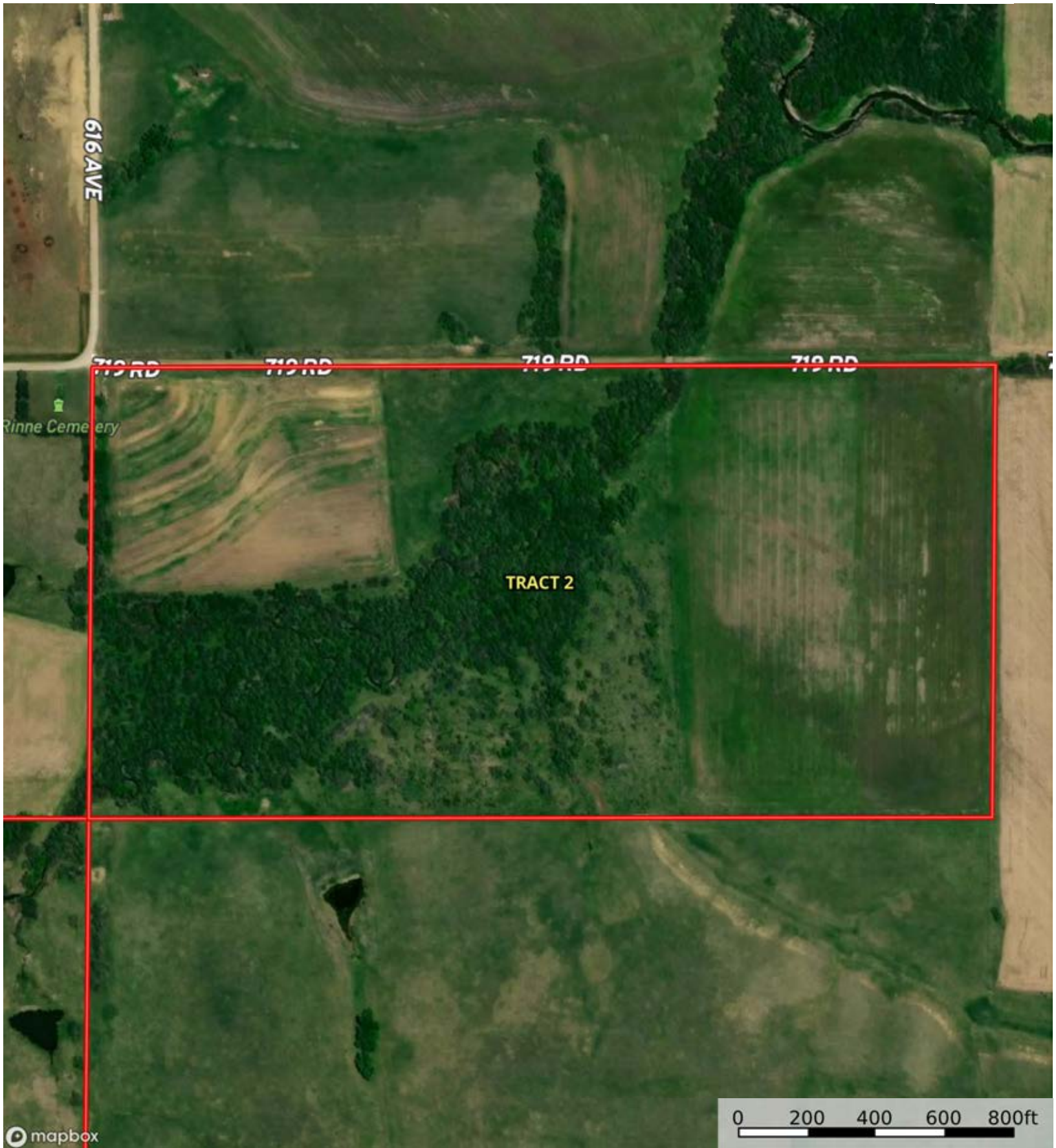
Boundary

Boundary 119.76 ac

SOIL CODE	SOIL DESCRIPTION	ACRES	%	CPI	NCCPI	CAP
7227	Burchard clay loam, 6 to 11 percent slopes	29.65	24.76	0	54	3e
7610	Steinauer clay loam, 11 to 20 percent slopes	26.72	22.31	0	61	6e
7750	Nodaway silt loam, occasionally flooded	24.85	20.75	0	93	2w
7229	Burchard clay loam, 11 to 17 percent slopes	18.08	15.1	0	50	4e
7501	Pawnee clay loam, 4 to 8 percent slopes, eroded	11.26	9.4	0	40	3e
7153	Kennebec silt loam, rarely flooded	4.35	3.63	0	94	1
7231	Judson silt loam, 2 to 6 percent slopes	4.3	3.59	0	78	2e
7613	Steinauer clay loam, 6 to 11 percent slopes	0.38	0.32	0	71	4e
7619	Steinauer clay loam, 30 to 50 percent slopes	0.17	0.14	0	14	7e
TOTALS		119.76(*)	100%	-	64.05	3.51

(*) Total acres may differ in the second decimal compared to the sum of each acreage soil. This is due to a round error because we only show the acres of each soil with two decimal.





Boundary



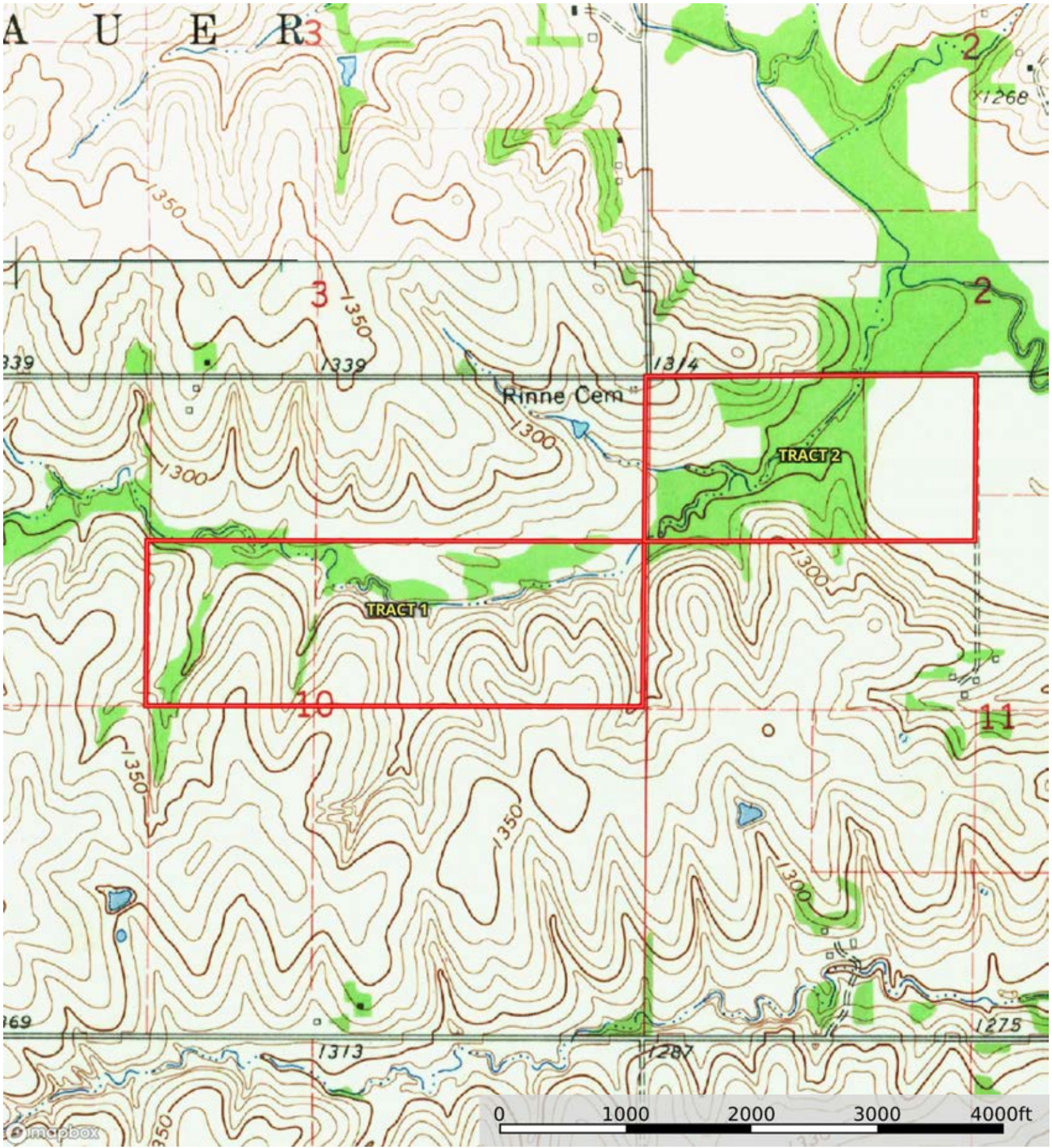
Boundary

|  Boundary 79.78 ac

SOIL CODE	SOIL DESCRIPTION	ACRES	%	CPI	NCCPI	CAP
7750	Nodaway silt loam, occasionally flooded	25.79	32.33	0	93	2w
7090	Wabash silty clay loam, occasionally flooded	15.84	19.85	0	50	3w
7231	Judson silt loam, 2 to 6 percent slopes	14.77	18.51	0	78	2e
7610	Steinauer clay loam, 11 to 20 percent slopes	10.14	12.71	0	61	6e
7501	Pawnee clay loam, 4 to 8 percent slopes, eroded	6.83	8.56	0	40	3e
7229	Burchard clay loam, 11 to 17 percent slopes	6.41	8.03	0	50	4e
TOTALS		79.78(*)	100%	-	69.63	2.95

(*) Total acres may differ in the second decimal compared to the sum of each acreage soil. This is due to a round error because we only show the acres of each soil with two decimal.





Boundary