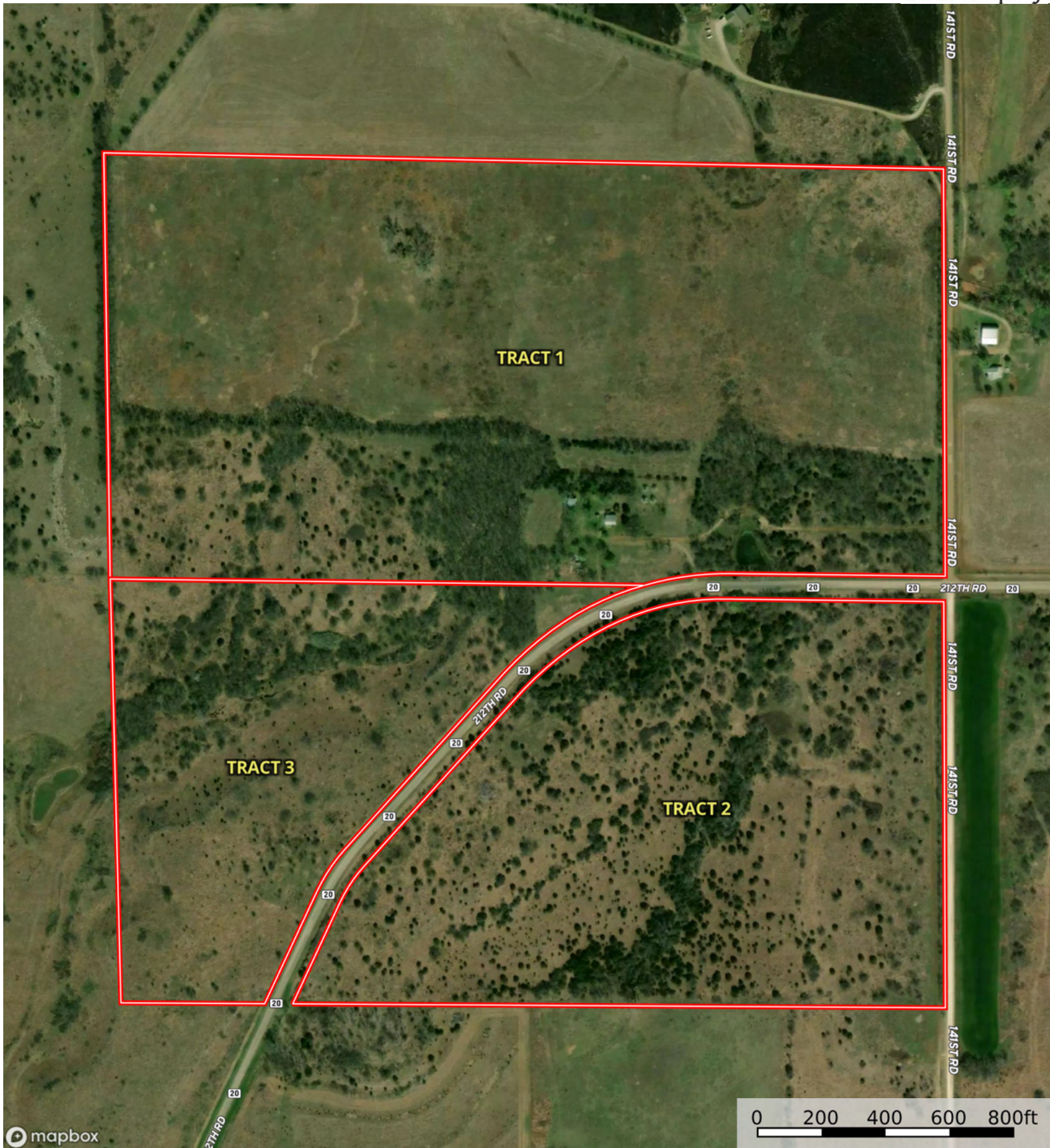
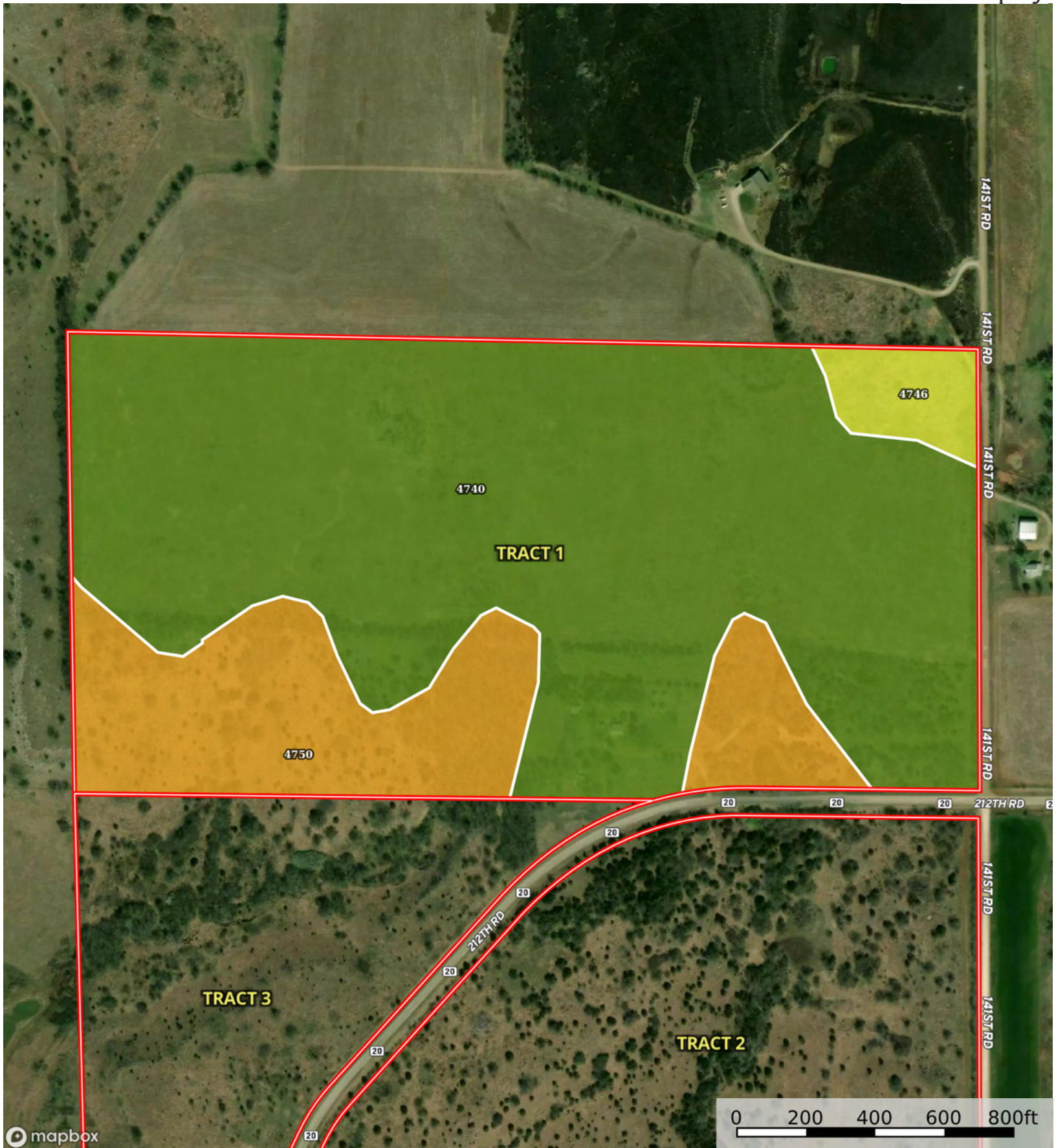
 Boundary



mapbox

Boundary



mapbox

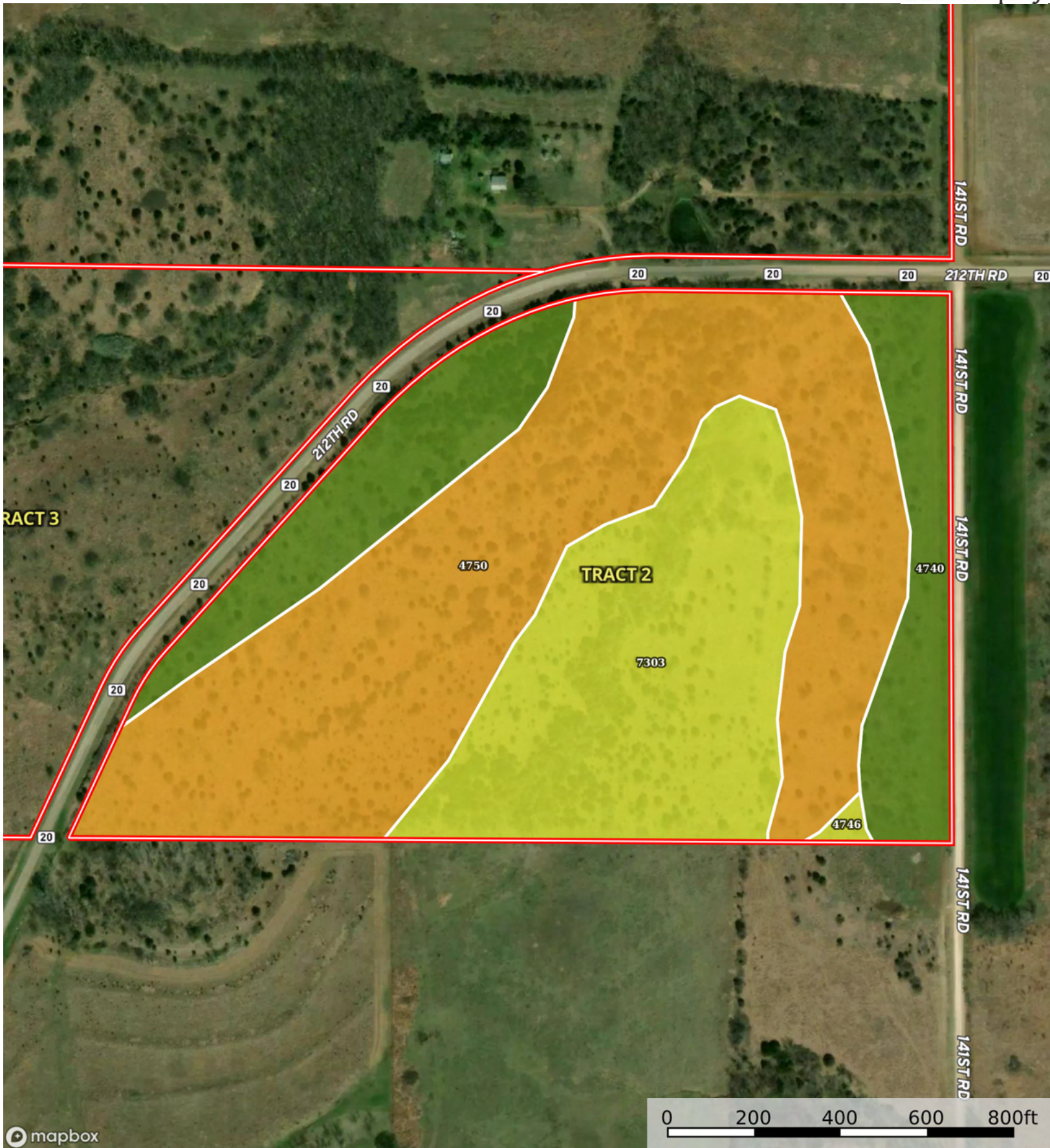
Boundary

Boundary 79.15 ac

SOIL CODE	SOIL DESCRIPTION	ACRES	%	CPI	NCCPI	CAP
4740	Labette silty clay loam, 1 to 3 percent slopes	59.08	74.64	0	51	2e
4750	Sogn silty clay loam, 0 to 10 percent slopes	17.33	21.9	0	21	6s
4746	Labette-Sogn silty clay loam, 0 to 8 percent slopes	2.74	3.46	0	37	4e
TOTALS		79.15(*)	100%	-	43.95	2.95

(*) Total acres may differ in the second decimal compared to the sum of each acreage soil. This is due to a round error because we only show the acres of each soil with two decimal.





Boundary

|  Boundary 46.74 ac

SOIL CODE	SOIL DESCRIPTION	ACRES	%	CPI	NCCPI	CAP
4750	Sogn silty clay loam, 0 to 10 percent slopes	23.53	50.35	0	21	6s
7303	Martin silty clay loam, 3 to 7 percent slopes, eroded	13.22	28.29	0	50	4e
4740	Labette silty clay loam, 1 to 3 percent slopes	9.8	20.97	0	51	2e
4746	Labette-Sogn silty clay loam, 0 to 8 percent slopes	0.19	0.41	0	37	4e
TOTALS		46.74(*)	100%	-	35.57	4.59

(*) Total acres may differ in the second decimal compared to the sum of each acreage soil. This is due to a round error because we only show the acres of each soil with two decimal.

Capability Legend

Increased Limitations and Hazards
Decreased Adaptability and Freedom of Choice Users

Land, Capability

	1	2	3	4	5	6	7	8
'Wild Life'	•	•	•	•	•	•	•	•
Forestry	•	•	•	•	•	•	•	
Limited	•	•	•	•	•	•	•	
Moderate	•	•	•	•	•	•		
Intense	•	•	•	•	•			
Limited	•	•	•	•				
Moderate	•	•	•					
Intense	•	•						
Very Intense	•							

Grazing Cultivation

(c) climatic limitations (e) susceptibility to erosion
(s) soil limitations within the rooting zone (w) excess of water



mapbox

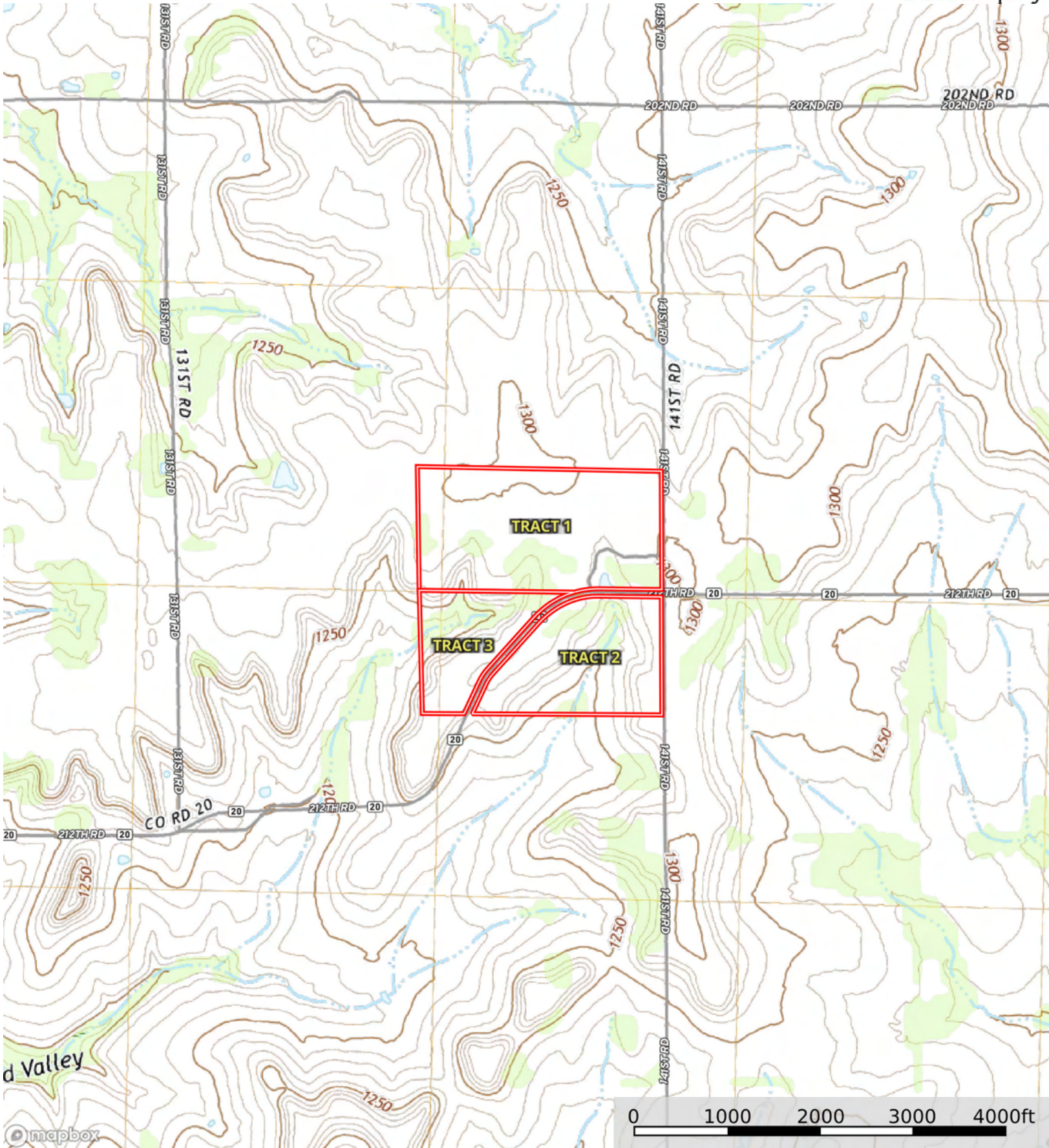
Boundary

Boundary 27.91 ac

SOIL CODE	SOIL DESCRIPTION	ACRES	%	CPI	NCCPI	CAP
4750	Sogn silty clay loam, 0 to 10 percent slopes	14.98	53.67	0	21	6s
7302	Martin silty clay loam, 3 to 7 percent slopes	8.74	31.31	0	53	3e
4740	Labette silty clay loam, 1 to 3 percent slopes	4.19	15.01	0	51	2e
TOTALS		27.91(*)	100%	-	35.52	4.46

(*) Total acres may differ in the second decimal compared to the sum of each acreage soil. This is due to a round error because we only show the acres of each soil with two decimal.





Boundary