

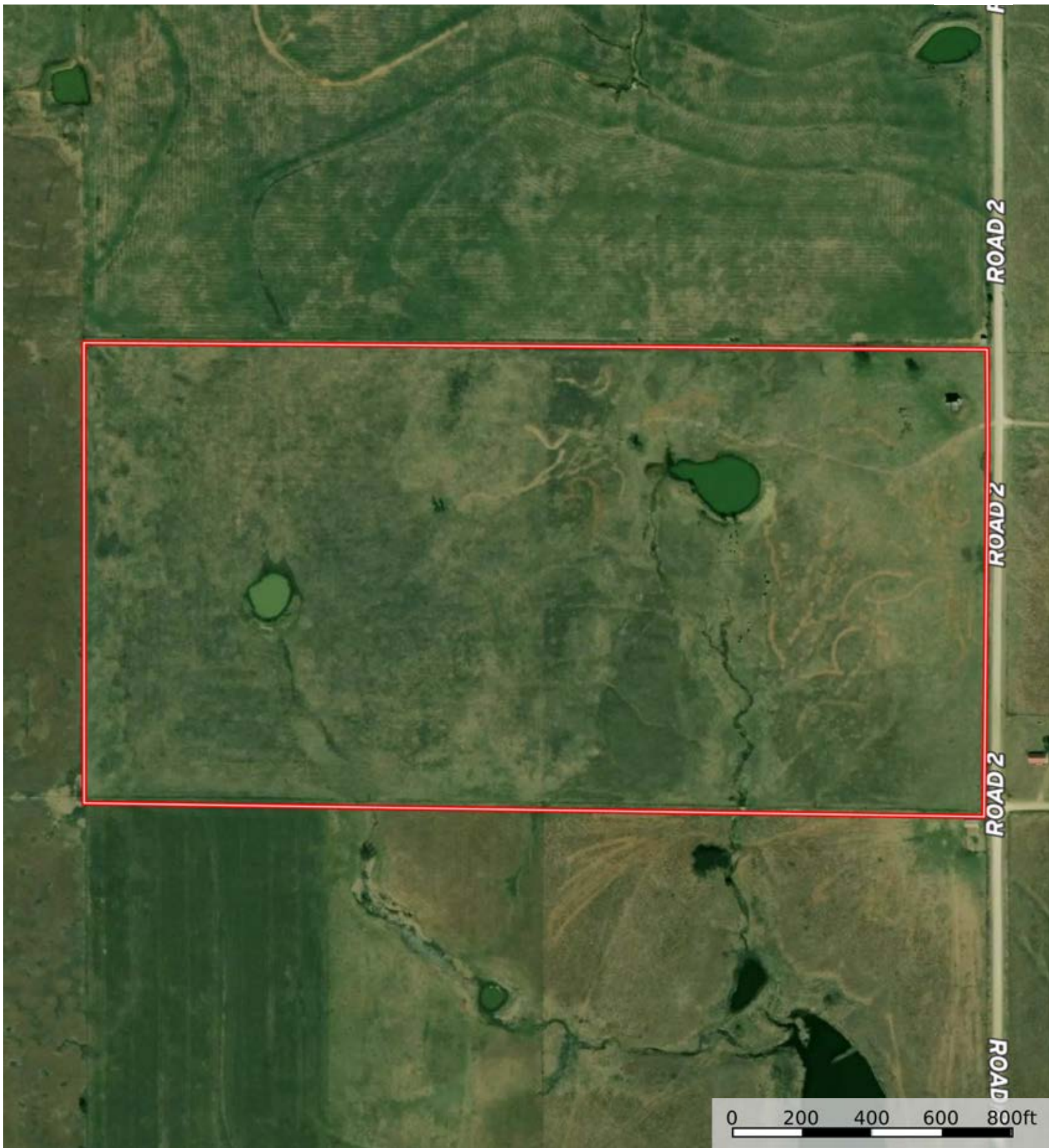
A-22565
Chautauqua County, Kansas, 79.5 AC +/-



 Boundary

A-22565

Chautauqua County, Kansas, 79.5 AC +/-



 Boundary



The information contained herein was obtained from sources deemed to be reliable. Land id™ Services makes no warranties or guarantees as to the completeness or accuracy thereof.



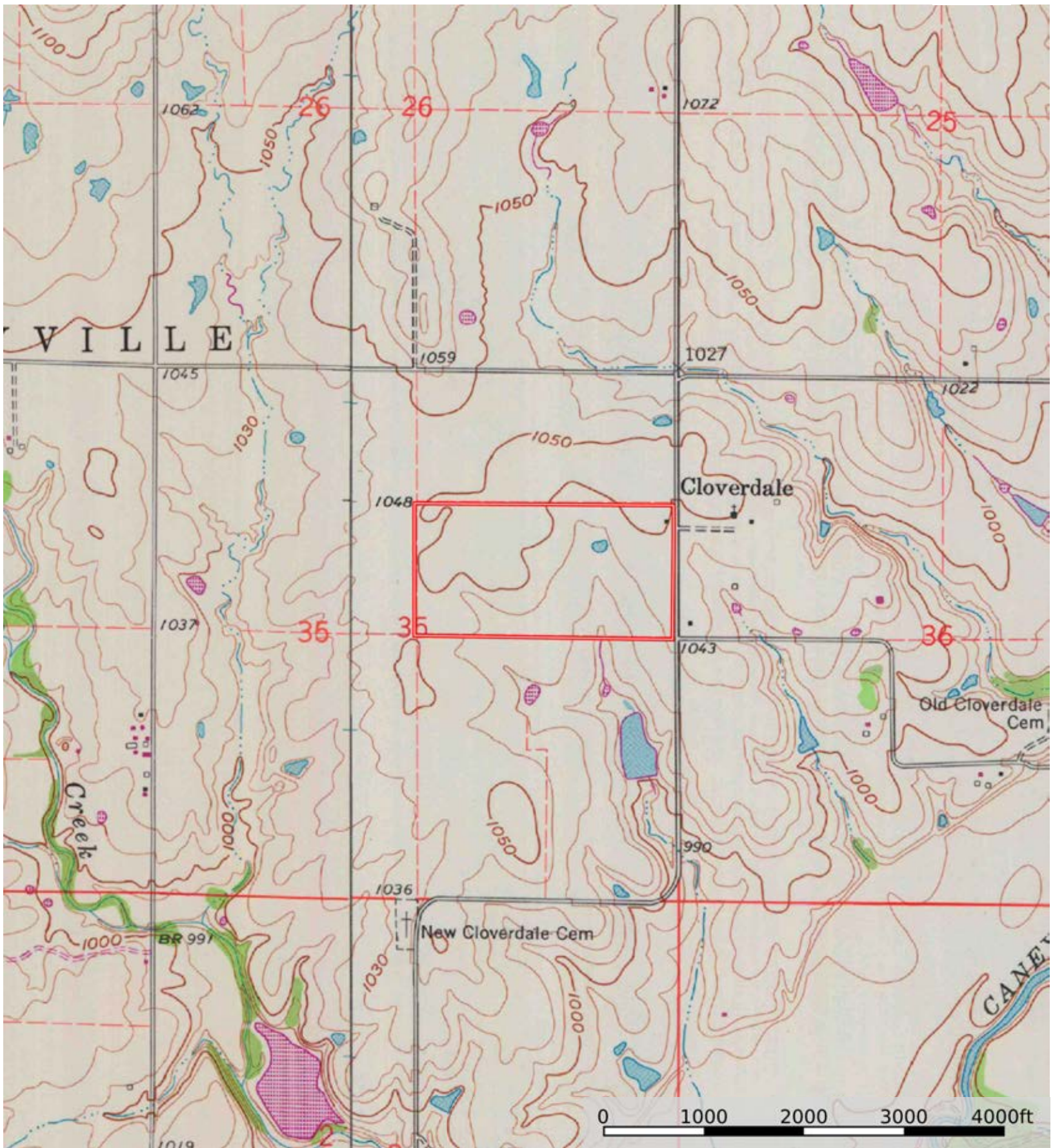
 Boundary


|  Boundary 79.43 ac

SOIL CODE	SOIL DESCRIPTION	ACRES	%	CPI	NCCPI	CAP
7310	Martin-Dwight silty clay loams, 1 to 3 percent slopes	52.97	66.69	0	49	2e
7303	Martin silty clay loam, 3 to 7 percent slopes, eroded	26.45	33.3	0	48	4e
7302	Martin silty clay loam, 3 to 7 percent slopes	0.01	0.01	0	52	3e
TOTALS		79.43(*)	100%	-	48.67	2.67

(*) Total acres may differ in the second decimal compared to the sum of each acreage soil. This is due to a round error because we only show the acres of each soil with two decimal.





 Boundary