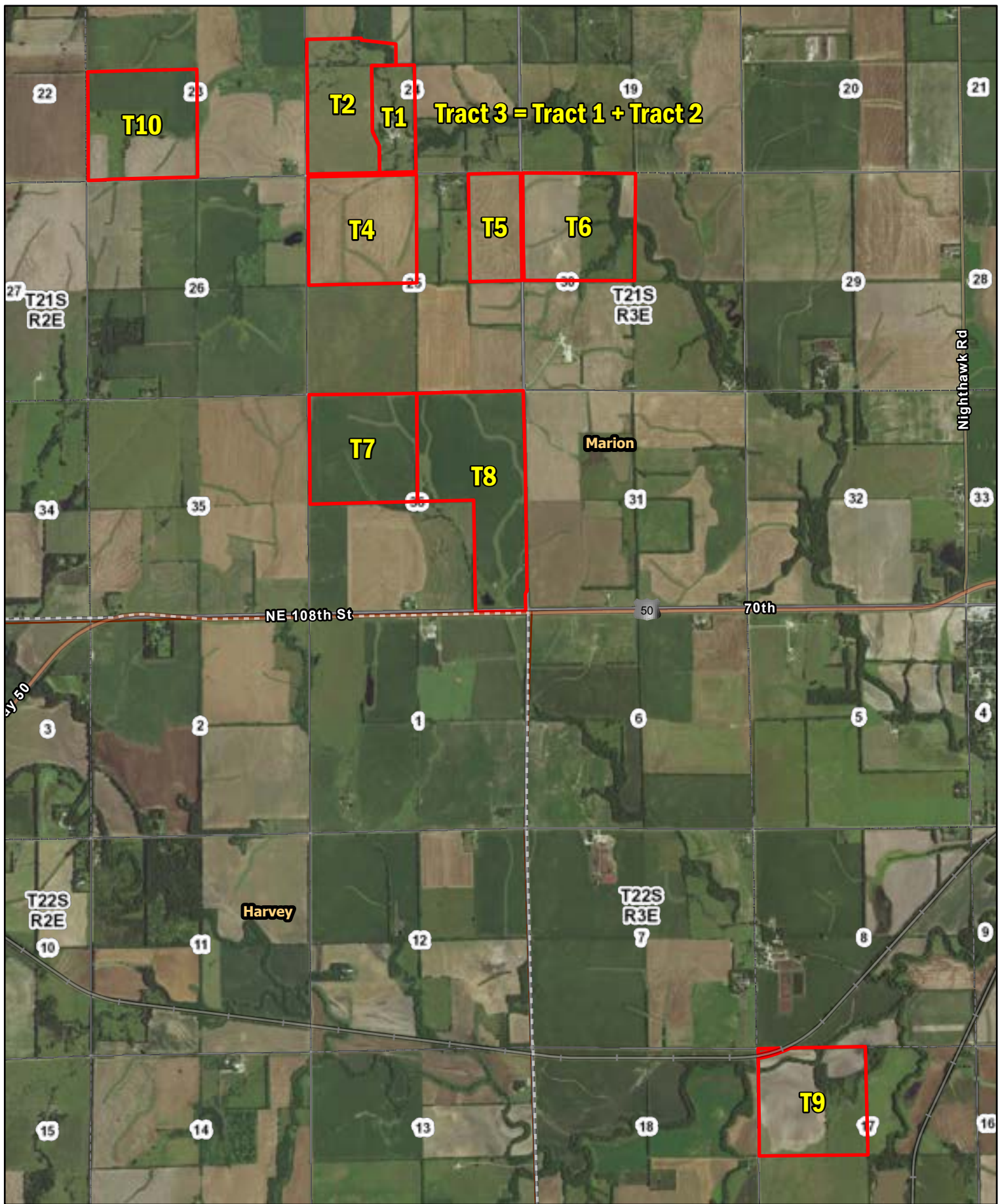


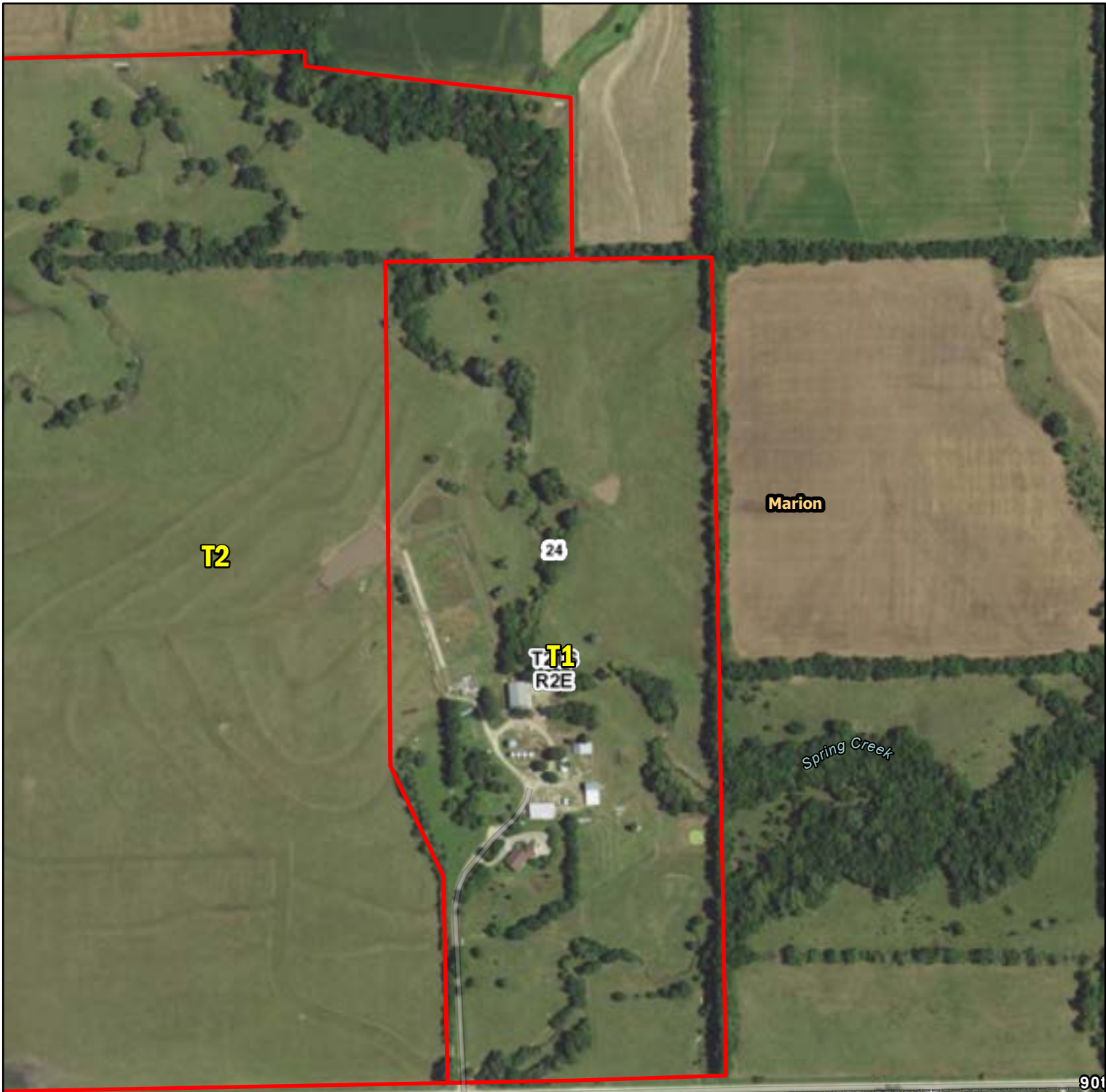
**A-22649**  
**Marion & Chase Co., Kansas**

Latitude: 38.1734°N  
 Longitude: 97.1415°W  
 Imagery Source: USDA NAIP  
 Soil Data Source: USDA NRCS  
 Boundaries are Approximate



**A-22649  
Marion & Chase Co., Kansas**

Latitude: 38.1752°N  
 Longitude: 97.1554°W  
 Imagery Source: USDA NAIP  
 Soil Data Source: USDA NRCS  
 Boundaries are Approximate



90th St

901

T4

25



**A-22649**  
**Marion & Chase Co., Kansas**

Latitude: 38.2077°N  
Longitude: 97.1636°W  
Imagery Source: USDA NAIP  
Soil Data Source: USDA NRCS  
Boundaries are Approximate



Marion

23 T21S R2E

Kanza Rd

T2

24

T1

90th St

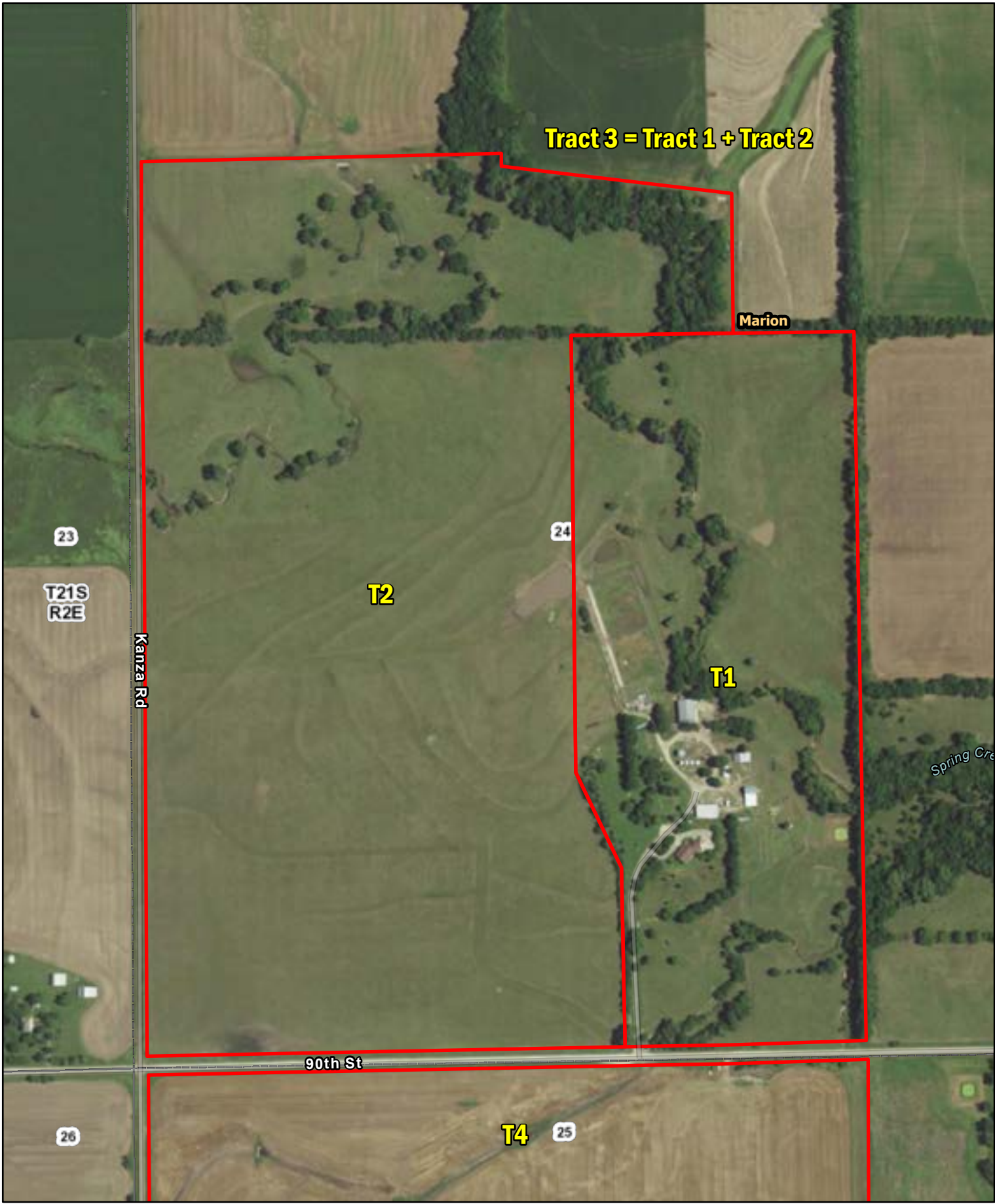
26

25 T4



A-22649  
Marion & Chase Co., Kansas

Latitude: 38.2086°N  
Longitude: 97.1671°W  
Imagery Source: USDA NAIP  
Soil Data Source: USDA NRCS  
Boundaries are Approximate



**Tract 3 = Tract 1 + Tract 2**

**Marion**

23

T21S  
R2E

Kaanza Rd

**T2**

24

**T1**

Spring Cre

90th St

26

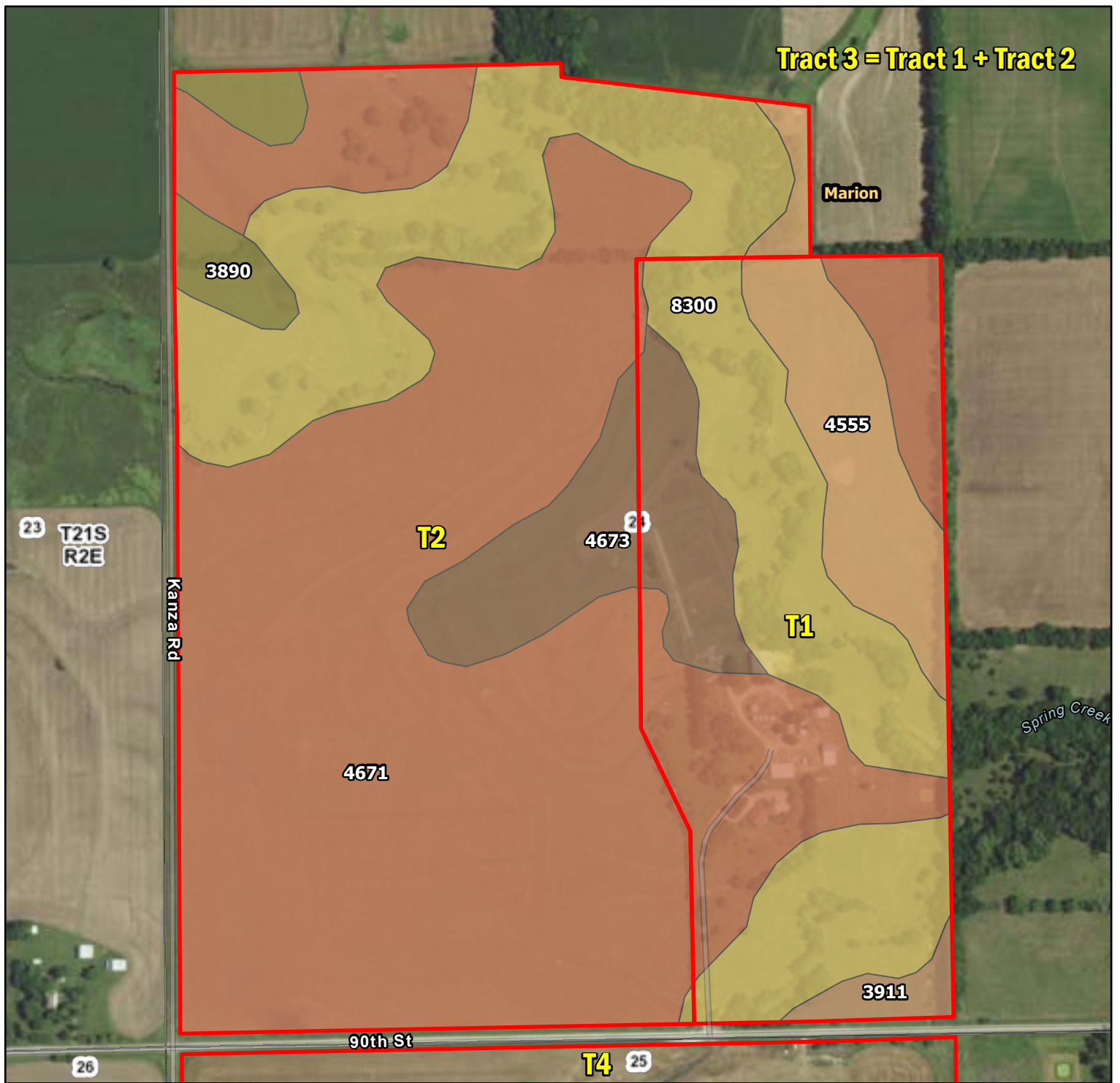
**T4**

25



**A-22649  
Marion & Chase Co., Kansas**

Latitude: 38.2086°N  
Longitude: 97.1664°W  
Imagery Source: USDA NAIP  
Soil Data Source: USDA NRCS  
Boundaries are Approximate

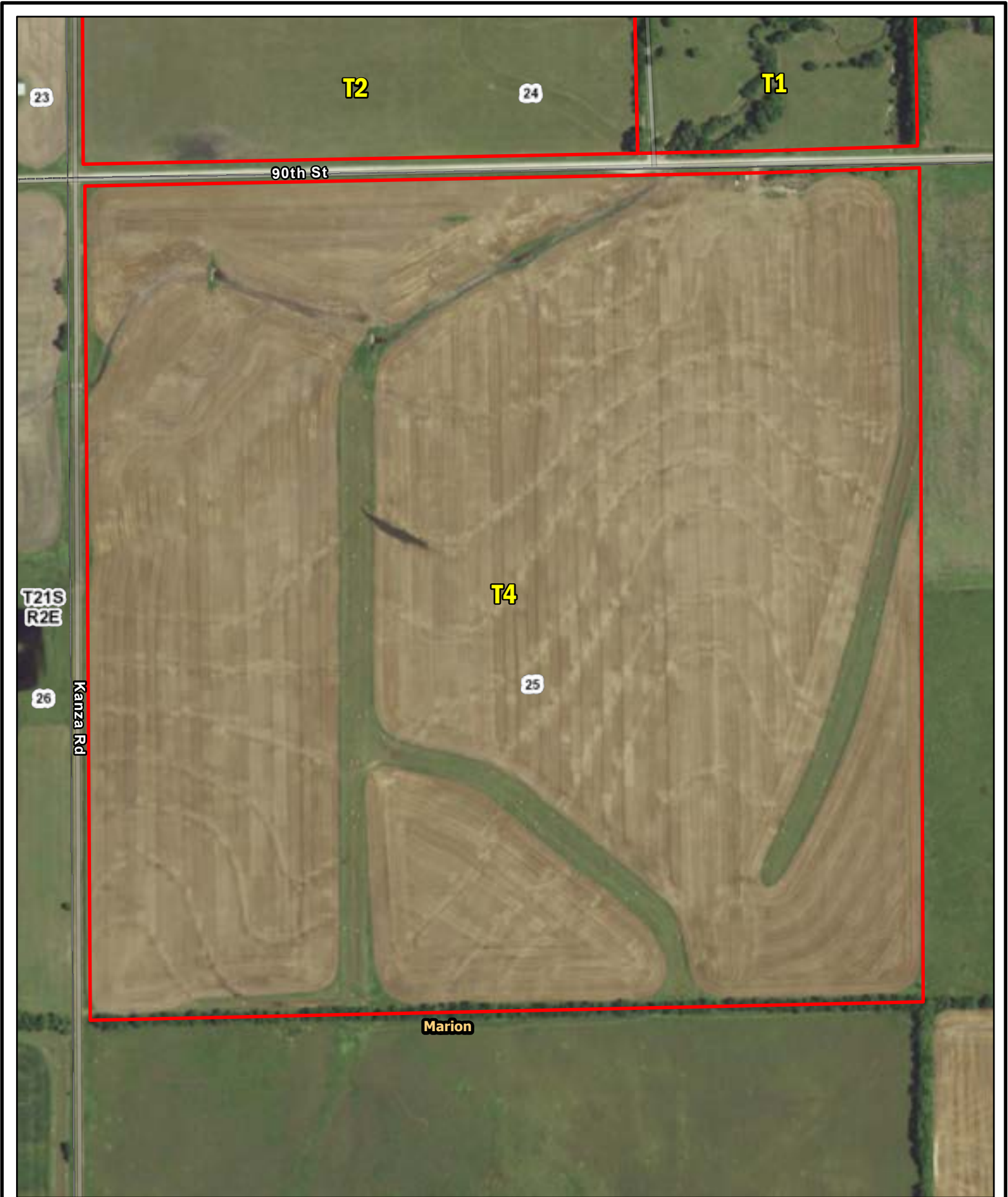


Map Symbol	Name	Non-IRR LCC	IRR LCC	ACRES
4671	Irwin silty clay loam, 1 to 3 percent slopes	IIIs	IIIs	106.1
8300	Verdigris silt loam, channeled, 0 to 2 percent slopes, frequently flooded	Vw	---	48.1
4673	Irwin silty clay loam, 3 to 7 percent slopes	IVe	IVe	14.1
4555	Clime silty clay loam, 3 to 7 percent slopes	IIIe	IIIe	11.6
3890	Ladysmith silty clay loam, 0 to 1 percent slopes	IIs	IIs	4.3
3911	Rosehill silty clay, 1 to 3 percent slopes	IIIe	IIIe	1.9
TOTAL				186.1



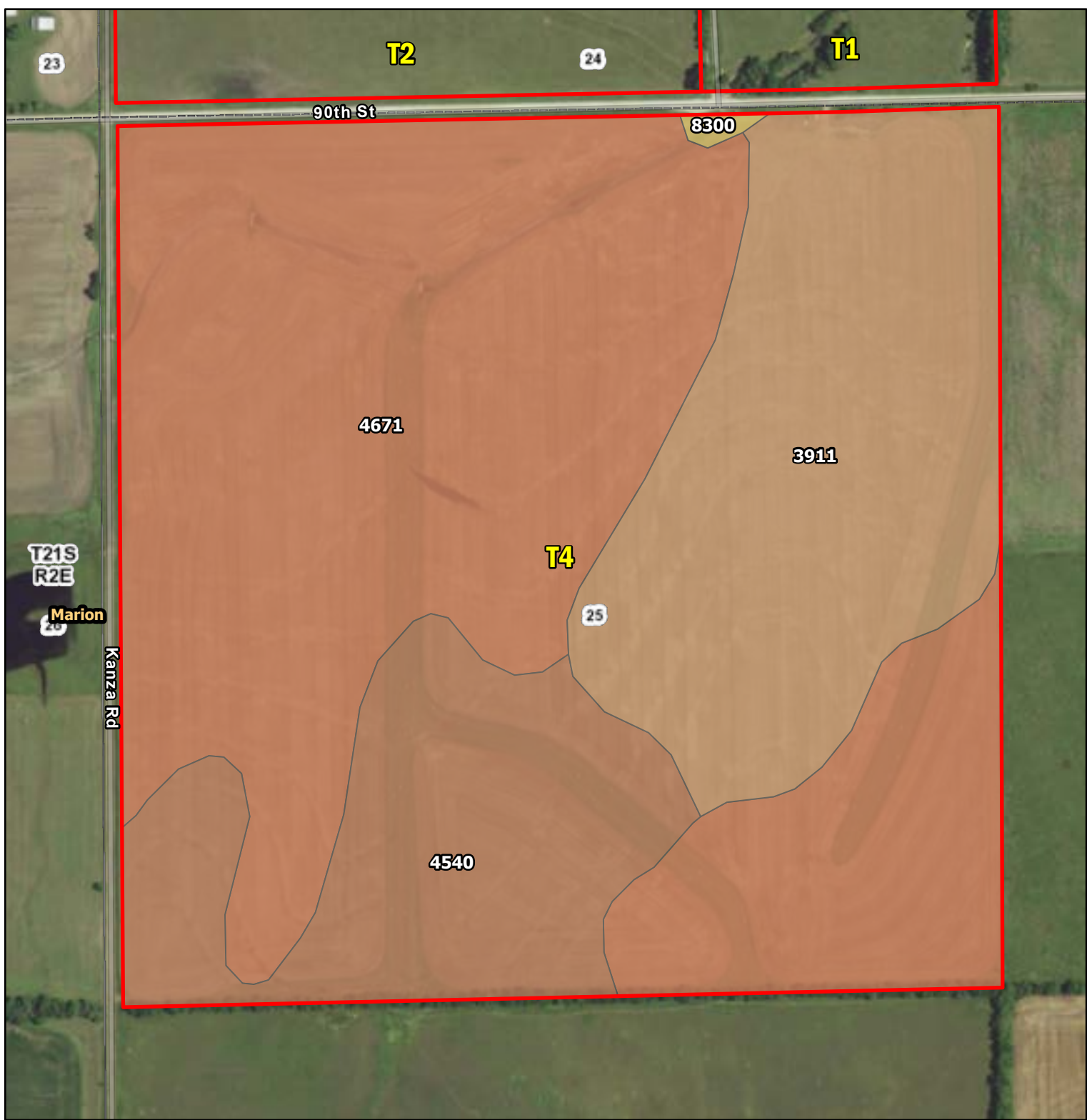
**A-22649**  
**Marion & Chase Co., Kansas**

Latitude: 38.2086°N  
 Longitude: 97.1664°W  
 Imagery Source: USDA NAIP  
 Soil Data Source: USDA NRCS  
 Boundaries are Approximate



**A-22649**  
**Marion & Chase Co., Kansas**

Latitude: 38.2002°N  
Longitude: 97.1664°W  
Imagery Source: USDA NAIP  
Soil Data Source: USDA NRCS  
Boundaries are Approximate



Map Symbol	Name	Non-IRR LCC	IRR LCC	ACRES
4671	Irwin silty clay loam, 1 to 3 percent slopes	IIIs	IIIs	89.1
3911	Rosehill silty clay, 1 to 3 percent slopes	IIIe	IIIe	41.1
4540	Clime silty clay loam, 1 to 3 percent slopes	IIIe	IIIe	26.8
8300	Verdigris silt loam, channeled, 0 to 2 percent slopes, frequently flooded	Vw	---	0.4
TOTAL				157.3



**A-22649**  
**Marion & Chase Co., Kansas**

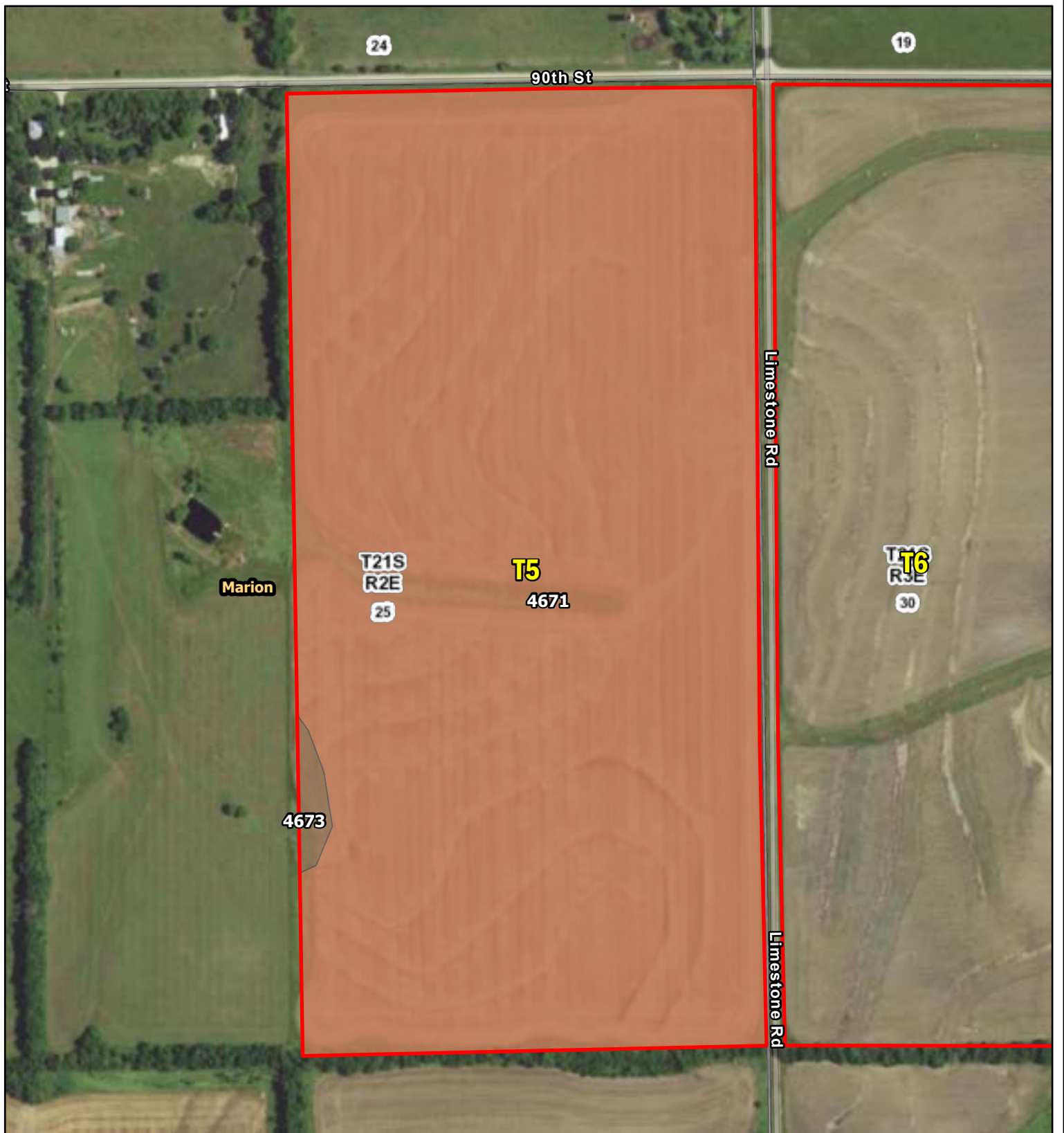
Latitude: 38.2003°N  
 Longitude: 97.1666°W  
 Imagery Source: USDA NAIP  
 Soil Data Source: USDA NRCS  
 Boundaries are Approximate





**A-22649**  
**Marion & Chase Co., Kansas**

Latitude: 38.2003°N  
Longitude: 97.1552°W  
Imagery Source: USDA NAIP  
Soil Data Source: USDA NRCS  
Boundaries are Approximate



Map Symbol	Name	Non-IRR LCC	IRR LCC	ACRES
4671	Irwin silty clay loam, 1 to 3 percent slopes	IIIs	IIIs	74.5
4673	Irwin silty clay loam, 3 to 7 percent slopes	IVe	IVe	0.6
TOTAL				75



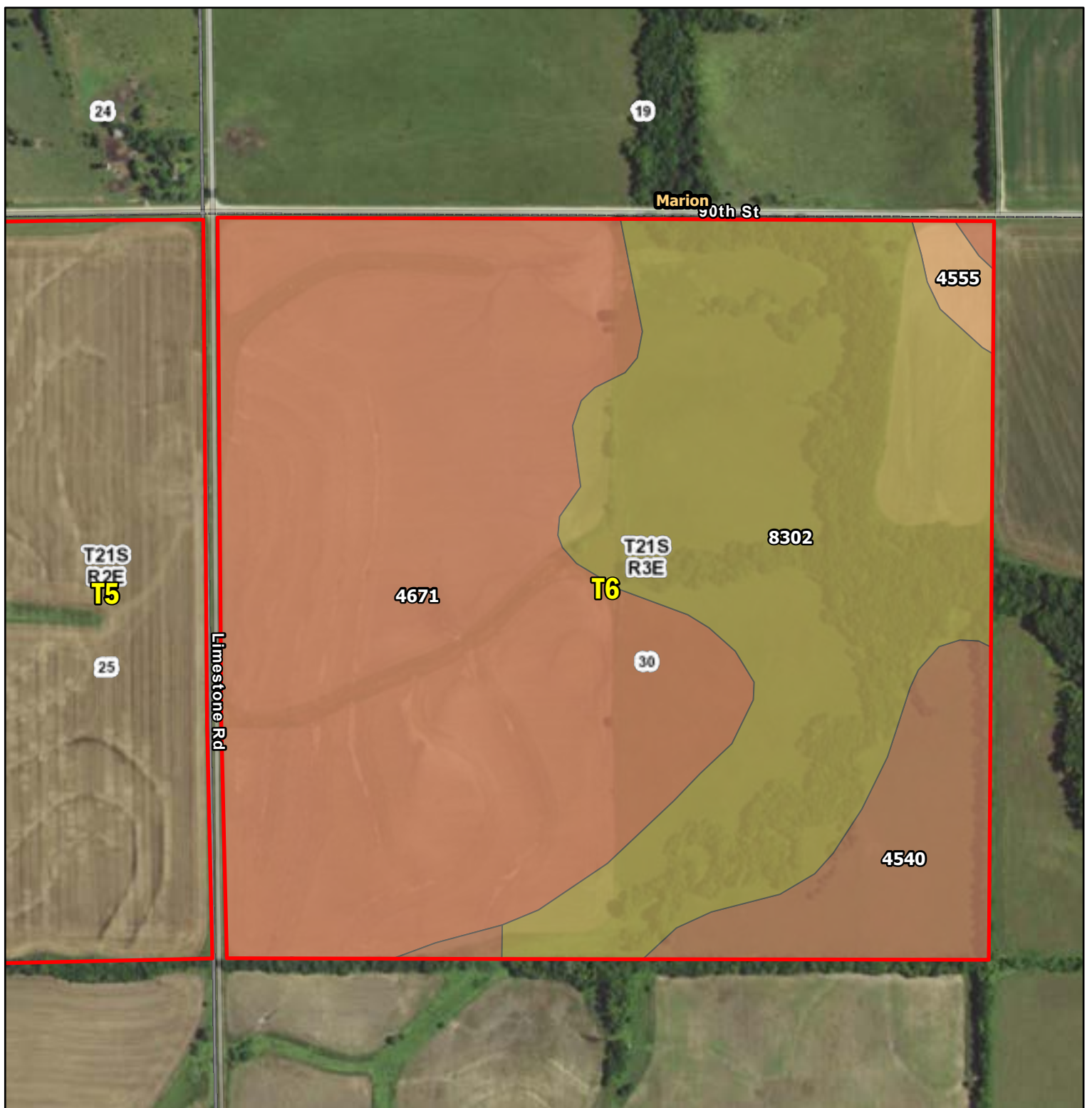
**A-22649**  
**Marion & Chase Co., Kansas**

Latitude: 38.2003°N  
 Longitude: 97.1552°W  
 Imagery Source: USDA NAIP  
 Soil Data Source: USDA NRCS  
 Boundaries are Approximate



**A-22649**  
**Marion & Chase Co., Kansas**

Latitude: 38.2003°N  
Longitude: 97.1484°W  
Imagery Source: USDA NAIP  
Soil Data Source: USDA NRCS  
Boundaries are Approximate



Map Symbol	Name	Non-IRR LCC	IRR LCC	ACRES
4671	Irwin silty clay loam, 1 to 3 percent slopes	IIIs	IIIs	85.4
4540	Clime silty clay loam, 1 to 3 percent slopes	IIIe	IIIe	14.3
4555	Clime silty clay loam, 3 to 7 percent slopes	IIIe	IIIe	1.8
8302	Verdigris silt loam, 0 to 1 percent slopes, occasionally flooded	IIw	---	59.9
TOTAL				161.4



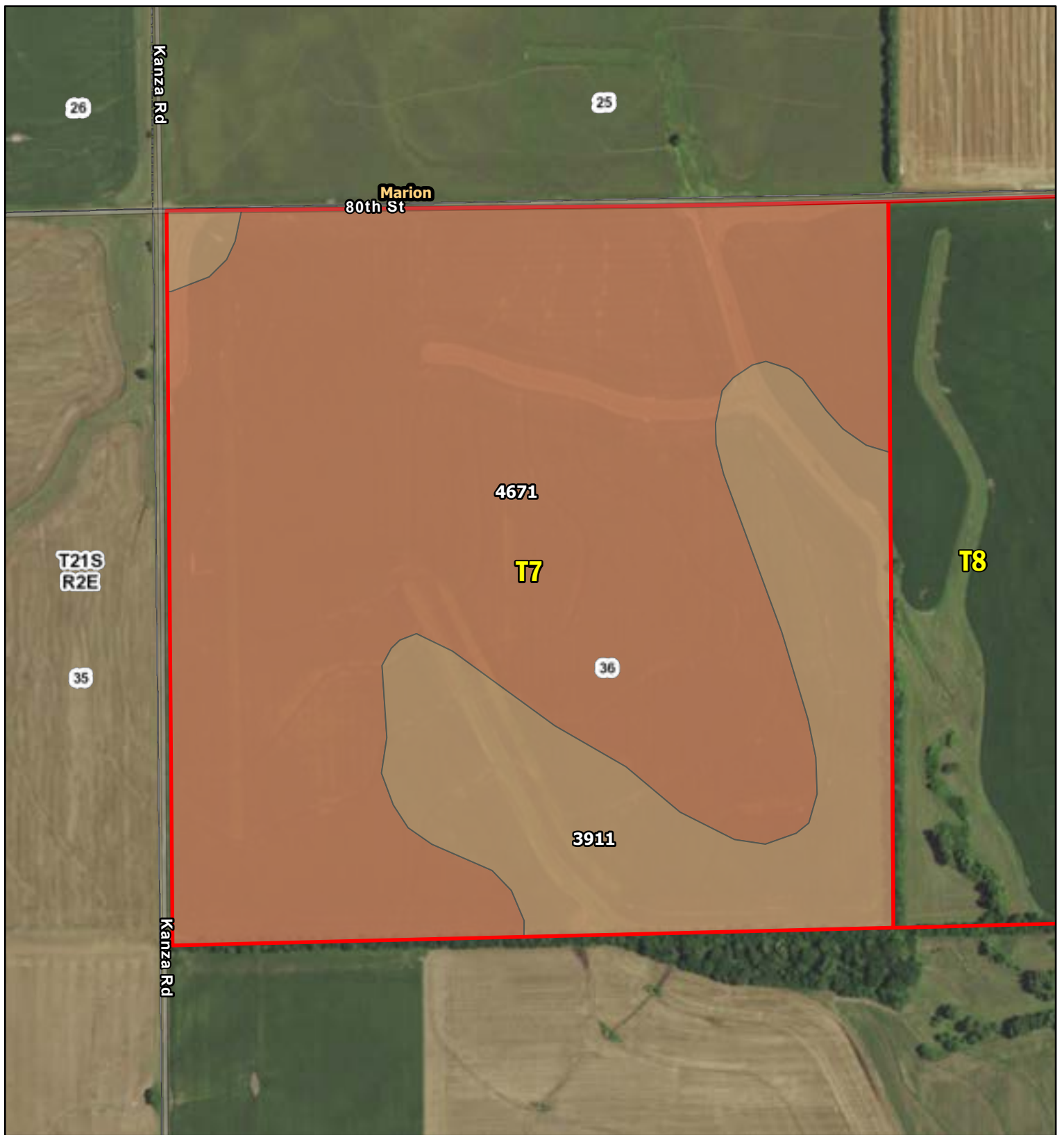
**A-22649**  
**Marion & Chase Co., Kansas**

Latitude: 38.2006°N  
 Longitude: 97.1489°W  
 Imagery Source: USDA NAIP  
 Soil Data Source: USDA NRCS  
 Boundaries are Approximate



**A-22649**  
**Marion & Chase Co., Kansas**

Latitude: 38.1859°N  
Longitude: 97.1668°W  
Imagery Source: USDA NAIP  
Soil Data Source: USDA NRCS  
Boundaries are Approximate

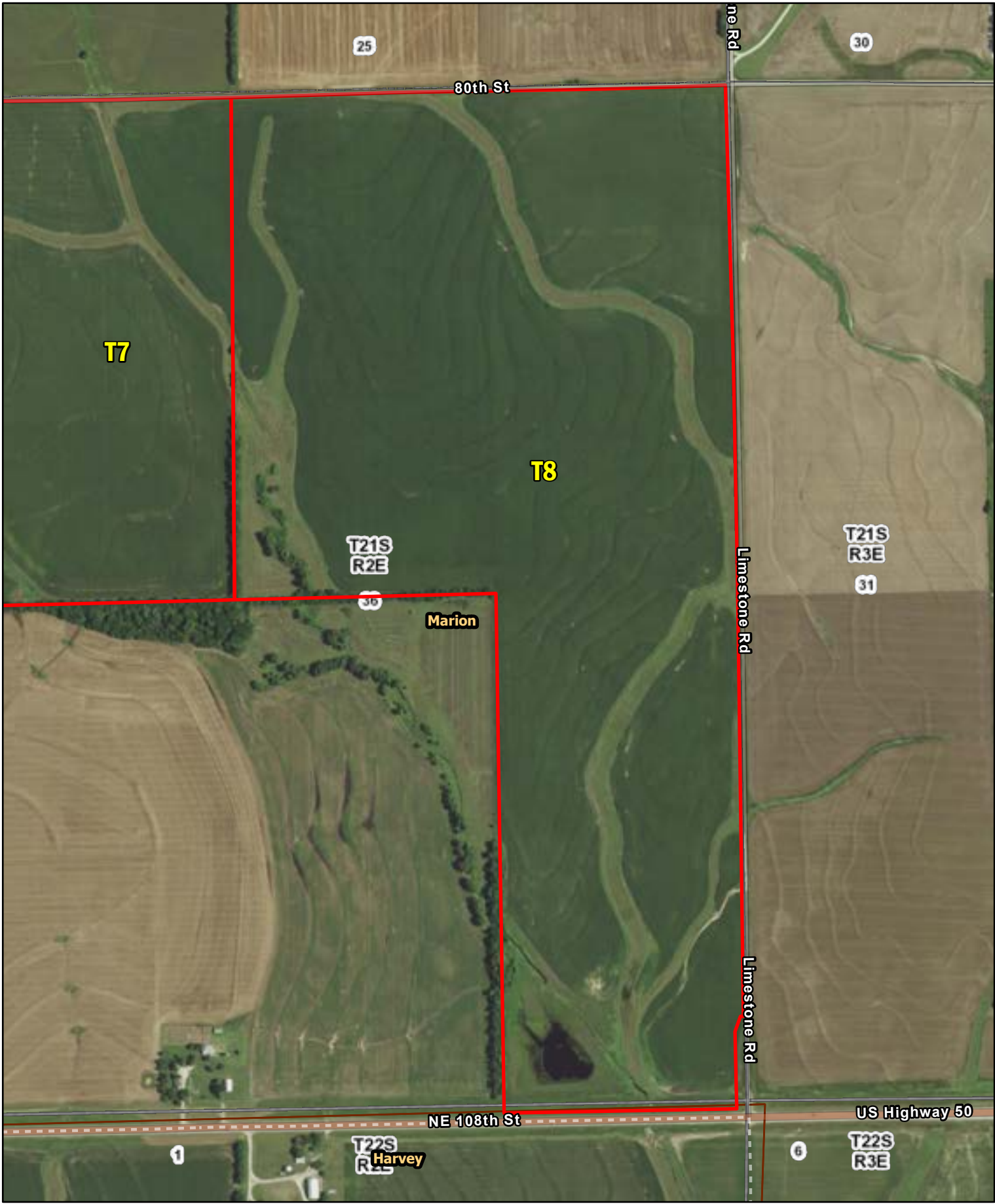


Map Symbol	Name	Non-IRR LCC	IRR LCC	ACRES
4671	Irwin silty clay loam, 1 to 3 percent slopes	IIIs	IIIs	117.5
3911	Rosehill silty clay, 1 to 3 percent slopes	IIIe	IIIe	39.5
TOTAL				157



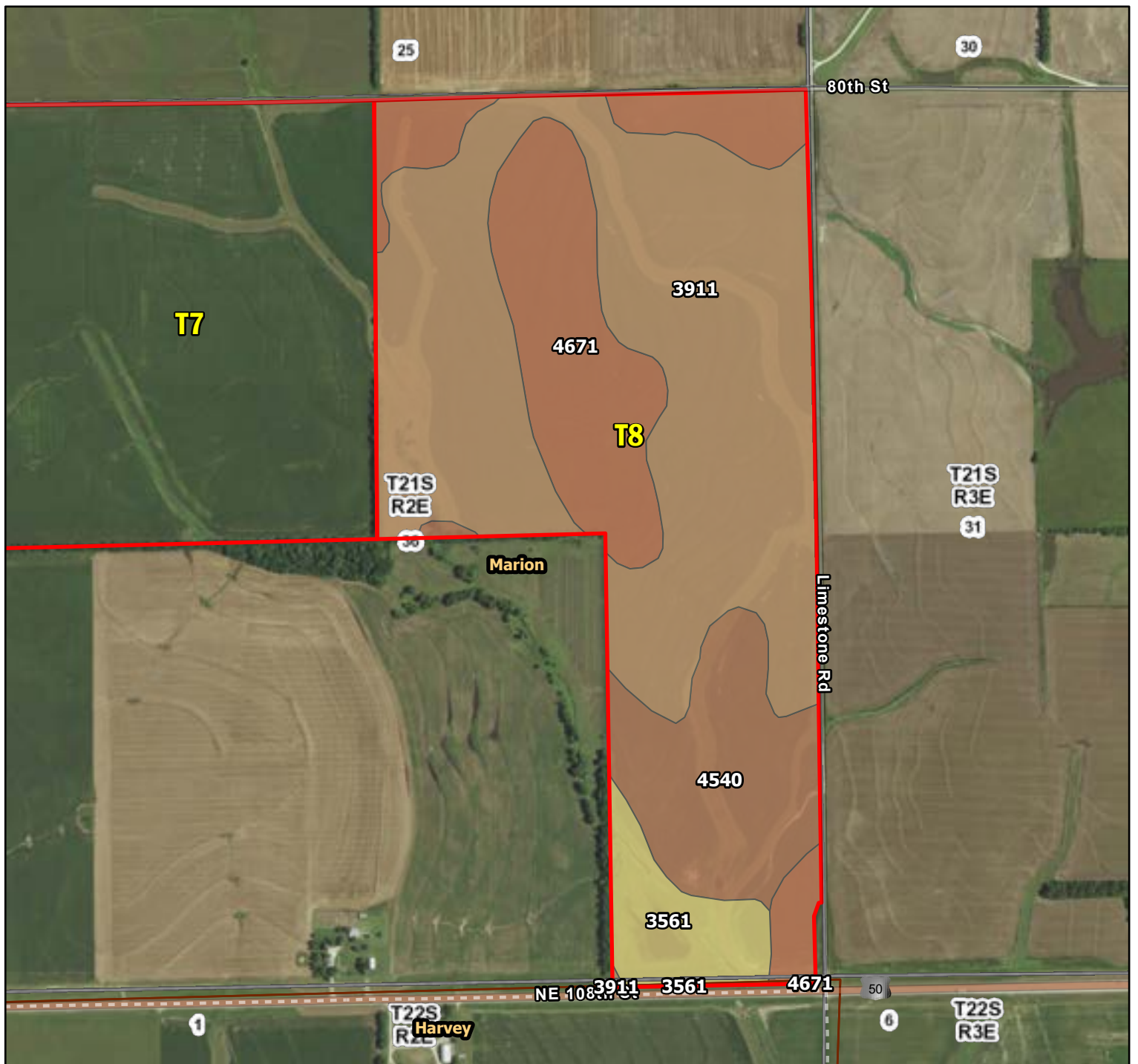
**A-22649**  
**Marion & Chase Co., Kansas**

Latitude: 38.1858°N  
 Longitude: 97.1667°W  
 Imagery Source: USDA NAIP  
 Soil Data Source: USDA NRCS  
 Boundaries are Approximate



**A-22649**  
**Marion & Chase Co., Kansas**

Latitude: 38.1821°N  
Longitude: 97.1575°W  
Imagery Source: USDA NAIP  
Soil Data Source: USDA NRCS  
Boundaries are Approximate



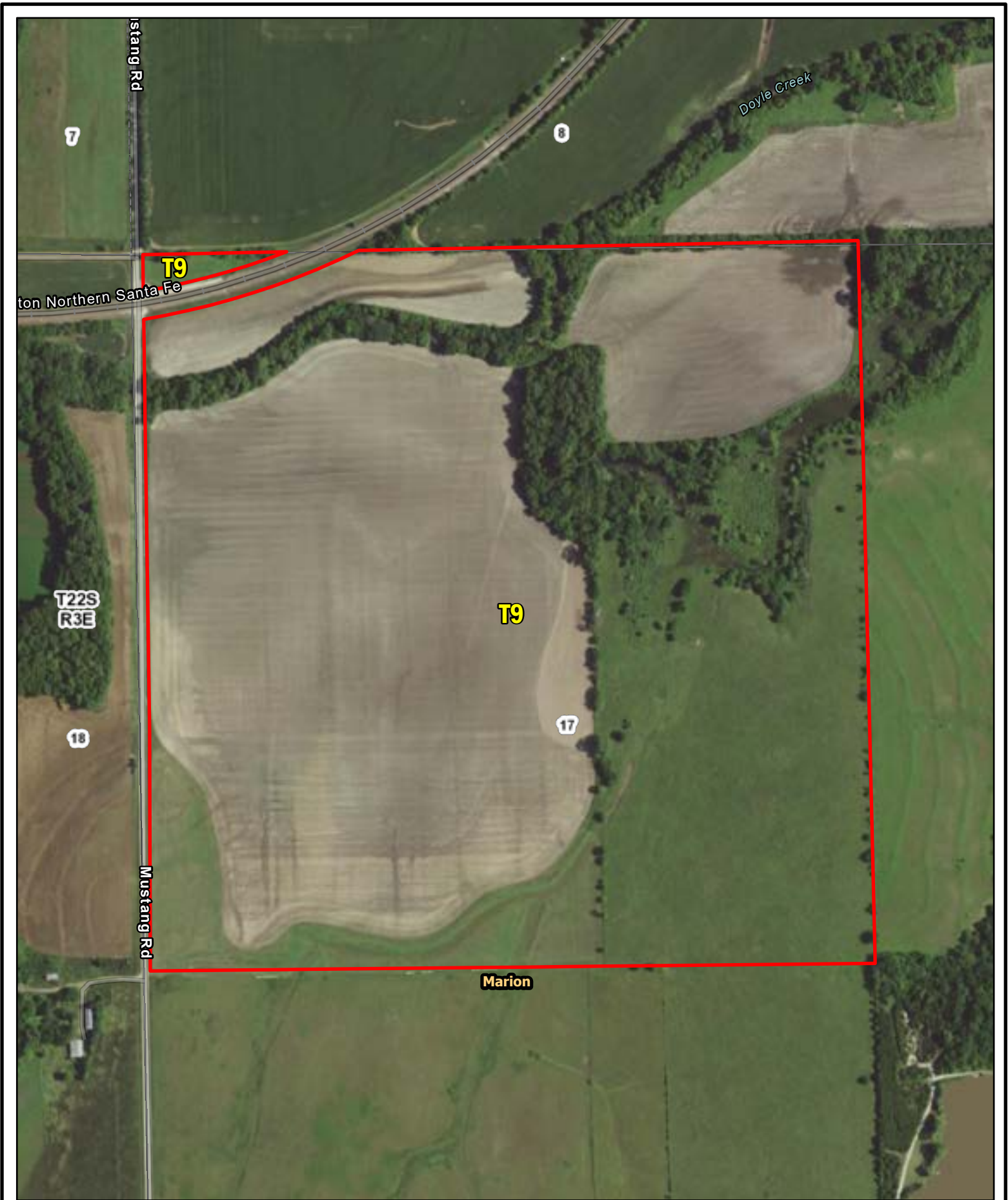
Map Symbol	Name	Non-IRR LCC	IRR LCC	ACRES
3911	Rosehill silty clay, 1 to 3 percent slopes	IIIe	IIIe	130.2
4671	Irwin silty clay loam, 1 to 3 percent slopes	IIIs	IIIs	54.9
4540	Clime silty clay loam, 1 to 3 percent slopes	IIIe	IIIe	34.1
3561	Hobbs silt loam, occasionally flooded	IIw	IIw	13.9
3561	Hobbs silt loam, occasionally flooded	IIw	IIw	0.8
4671	Irwin silty clay loam, 1 to 3 percent slopes	IIIs	IIIs	0.3
3911	Rosehill silty clay, 1 to 3 percent slopes	IIIe	IIIe	0.1
TOTAL				234.1



**A-22649**  
**Marion & Chase Co., Kansas**

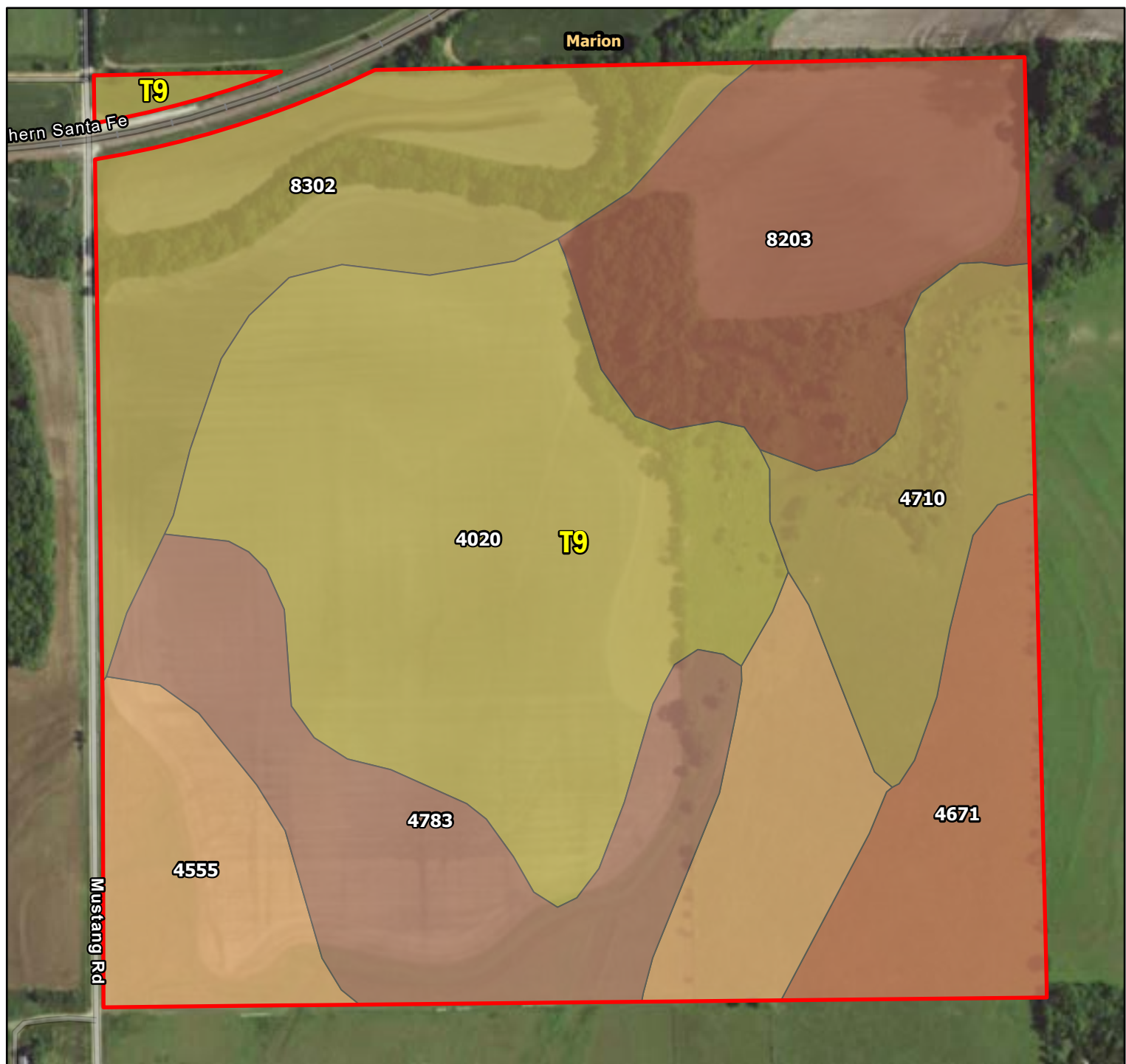
Latitude: 38.1822°N  
 Longitude: 97.1583°W  
 Imagery Source: USDA NAIP  
 Soil Data Source: USDA NRCS  
 Boundaries are Approximate





**A-22649**  
**Marion & Chase Co., Kansas**

Latitude: 38.1418°N  
Longitude: 97.13°W  
Imagery Source: USDA NAIP  
Soil Data Source: USDA NRCS  
Boundaries are Approximate



Map Symbol	Name	Non-IRR LCC	IRR LCC	ACRES
4020	Chase silty clay loam, occasionally flooded	IIw	IIw	42.4
8302	Verdigris silt loam, 0 to 1 percent slopes, occasionally flooded	IIw	---	24.2
8203	Osage silty clay, occasionally flooded	IIIw	IIIw	23.5
4783	Tully silty clay loam, 3 to 7 percent slopes	IIIe	IIIe	20.1
4555	Clime silty clay loam, 3 to 7 percent slopes	IIIe	IIIe	19.4
4710	Kipson silty clay loam, 5 to 30 percent slopes	VI	---	12.6
4671	Irwin silty clay loam, 1 to 3 percent slopes	III	III	12.5
TOTAL				154.8



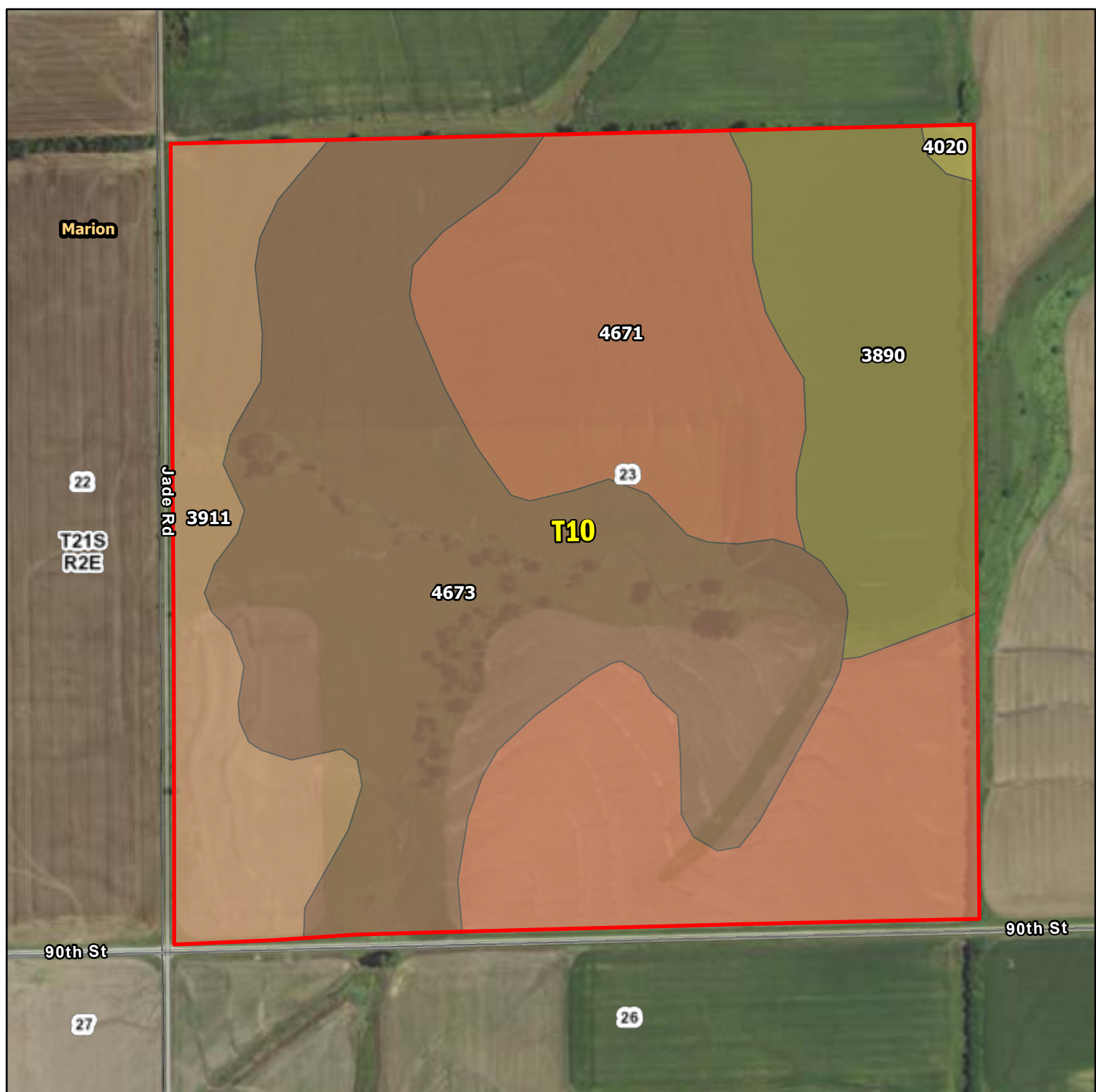
**A-22649**  
**Marion & Chase Co., Kansas**

Latitude: 38.1418°N  
 Longitude: 97.13°W  
 Imagery Source: USDA NAIP  
 Soil Data Source: USDA NRCS  
 Boundaries are Approximate



**A-22649**  
**Marion & Chase Co., Kansas**

Latitude: 38.2075°N  
Longitude: 97.1849°W  
Imagery Source: USDA NAIP  
Soil Data Source: USDA NRCS  
Boundaries are Approximate

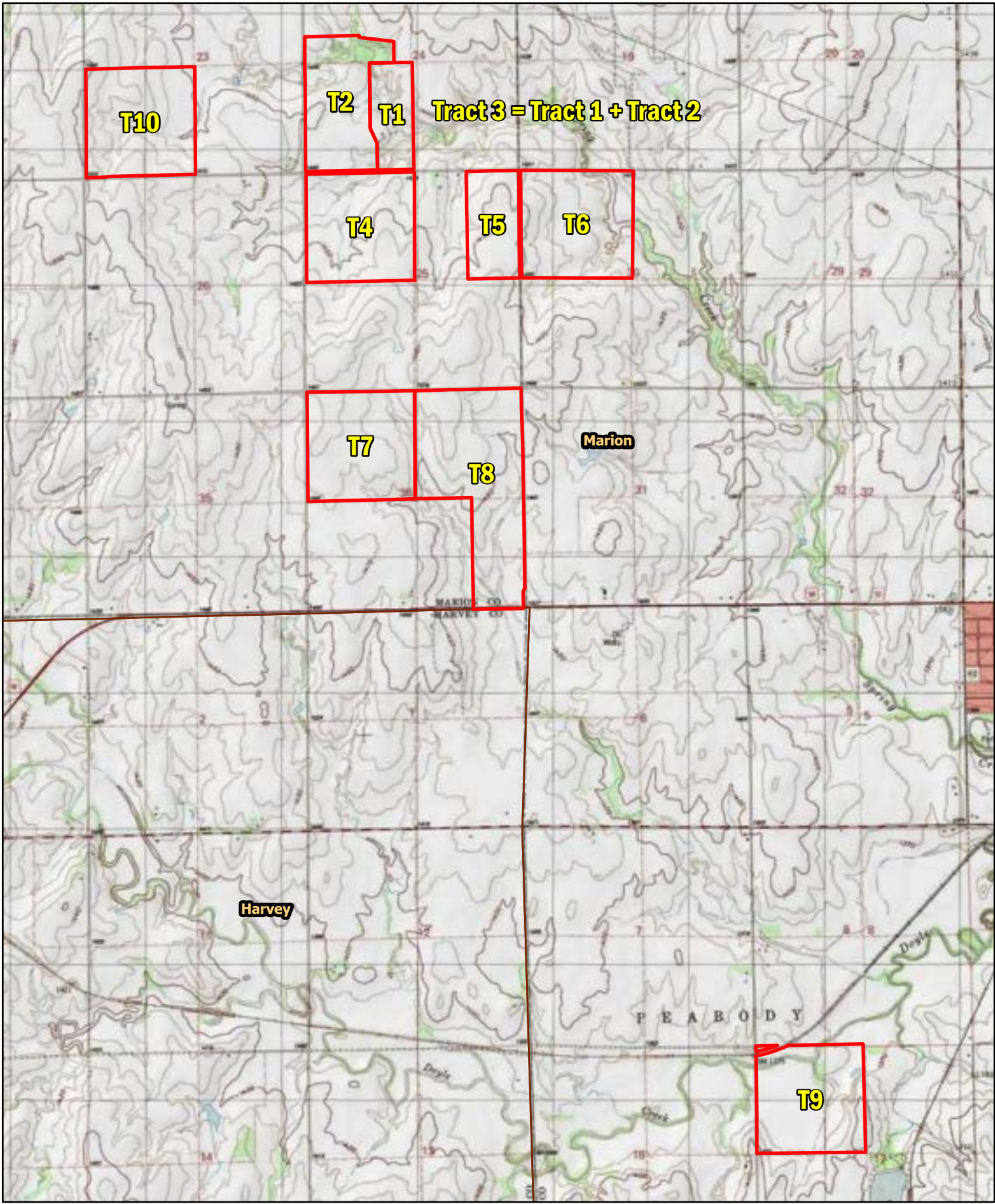


Map Symbol	Name	Non-IRR LCC	IRR LCC	ACRES
4673	Irwin silty clay loam, 3 to 7 percent slopes	IVe	IVe	59.4
4671	Irwin silty clay loam, 1 to 3 percent slopes	IIIs	IIIs	56.1
3890	Ladysmith silty clay loam, 0 to 1 percent slopes	IIs	IIs	23.3
3911	Rosehill silty clay, 1 to 3 percent slopes	IIIe	IIIe	19
4020	Chase silty clay loam, occasionally flooded	IIw	IIw	0.6
TOTAL				158.3



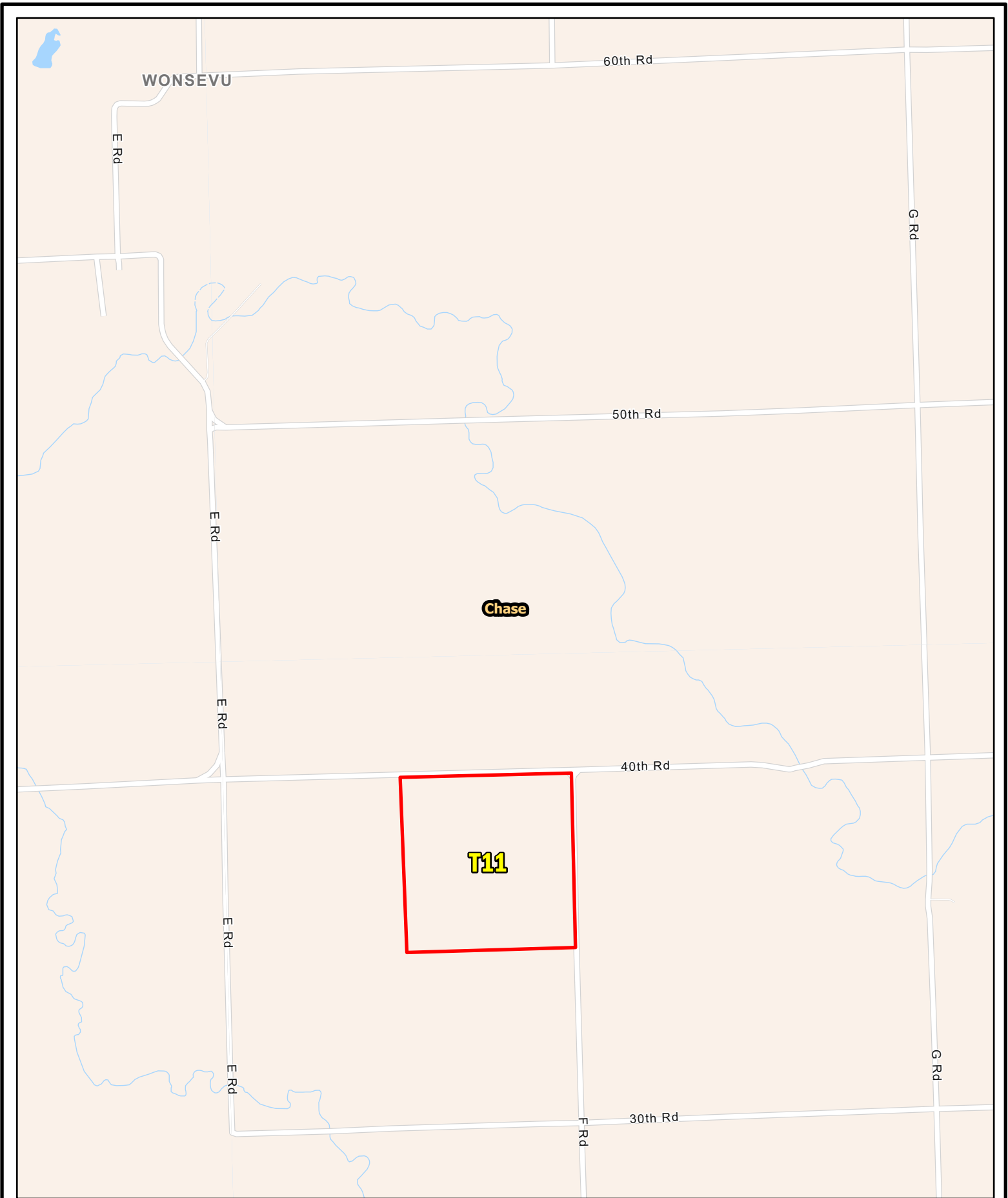
**A-22649**  
**Marion & Chase Co., Kansas**

Latitude: 38.2074°N  
 Longitude: 97.185°W  
 Imagery Source: USDA NAIP  
 Soil Data Source: USDA NRCS  
 Boundaries are Approximate



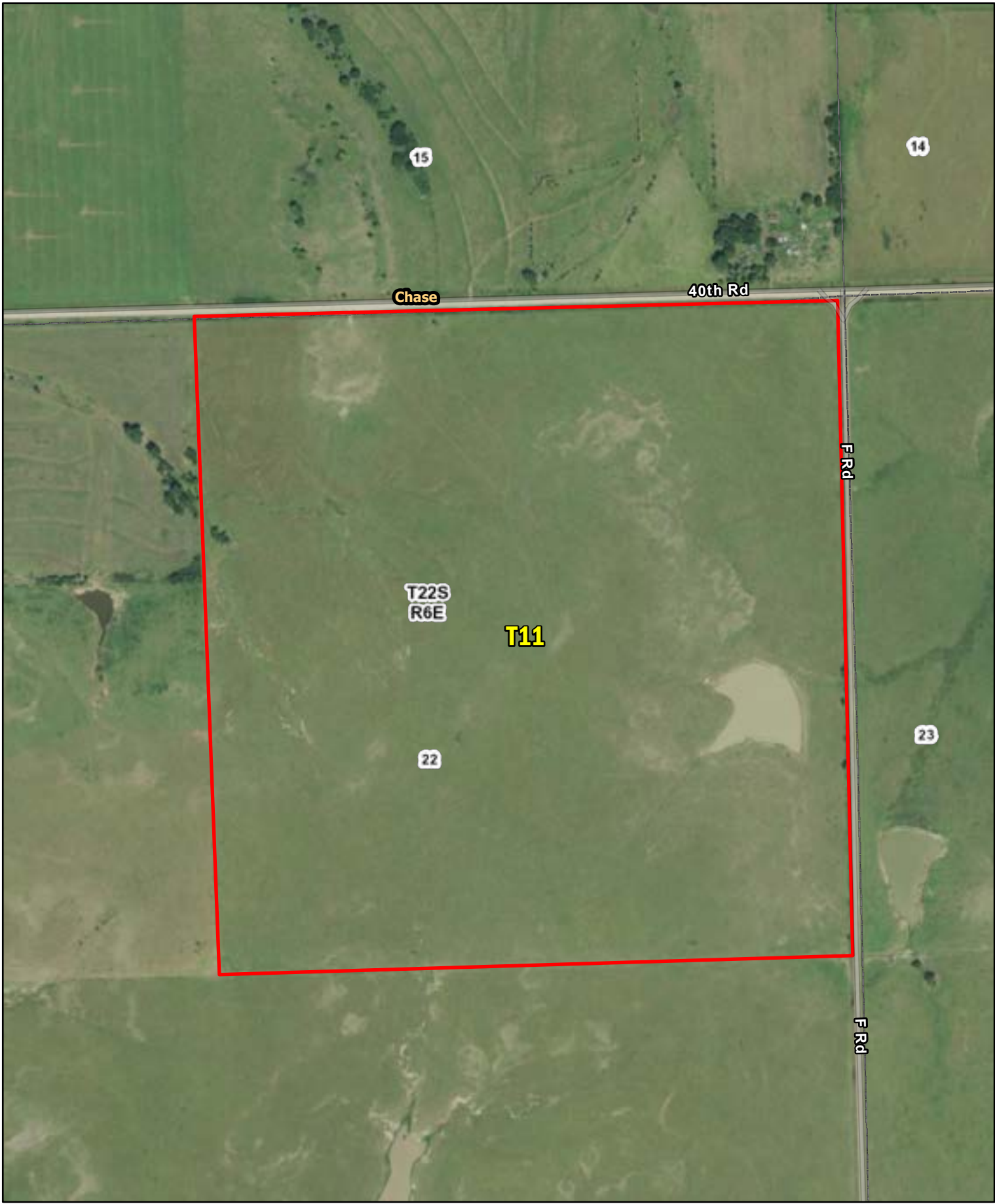
**A-22649**  
**Marion & Chase Co., Kansas**

Latitude: 38.1752°N  
Longitude: 97.1554°W  
Imagery Source: USDA NAIP  
Soil Data Source: USDA NRCS  
Boundaries are Approximate



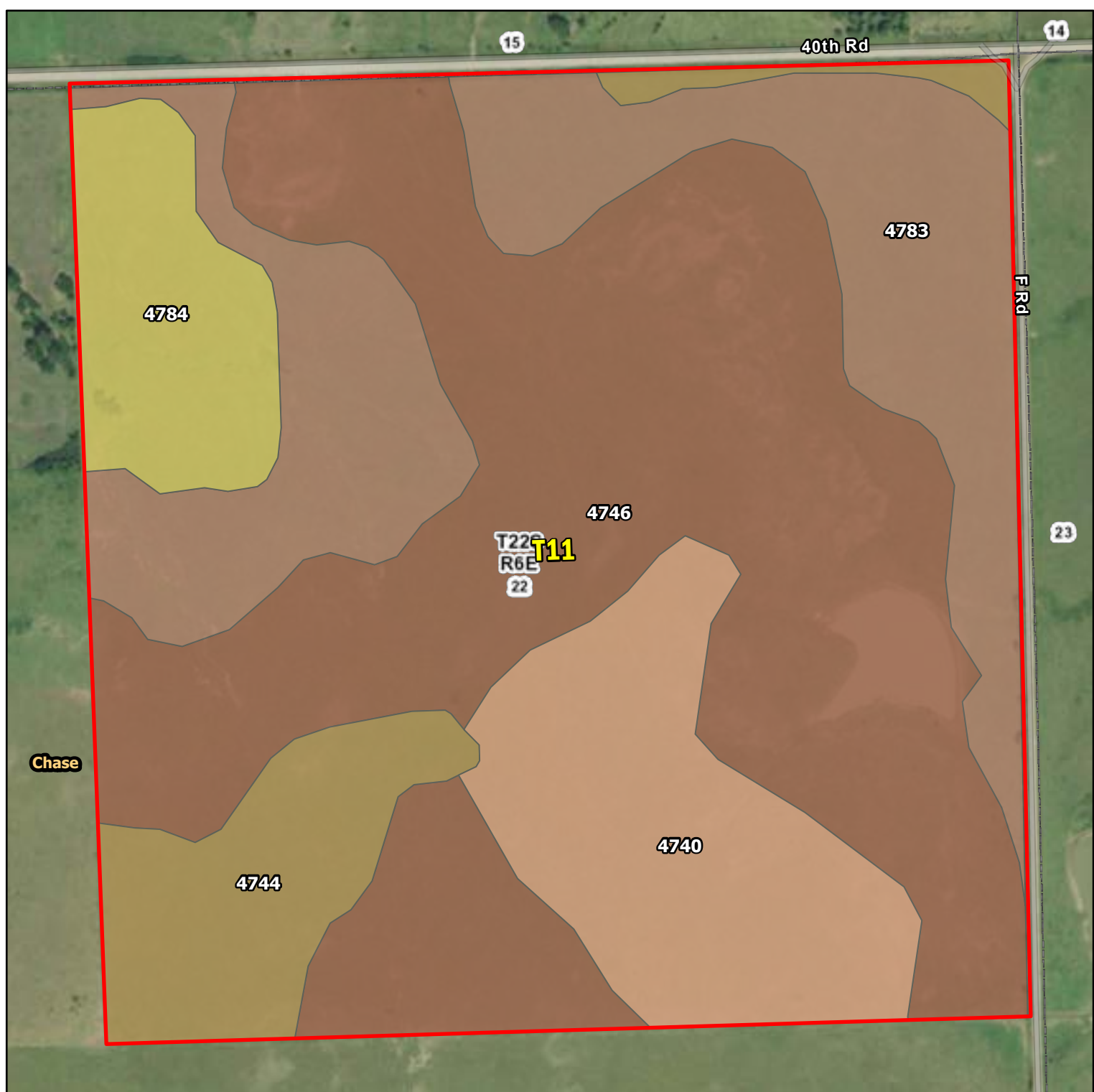
**A-22649**  
**Marion & Chase Co., Kansas**

Latitude: 38.1365°N  
Longitude: 96.7527°W  
Imagery Source: USDA NAIP  
Soil Data Source: USDA NRCS  
Boundaries are Approximate



**A-22649**  
**Marion & Chase Co., Kansas**

Latitude: 38.1264°N  
Longitude: 96.7542°W  
Imagery Source: USDA NAIP  
Soil Data Source: USDA NRCS  
Boundaries are Approximate



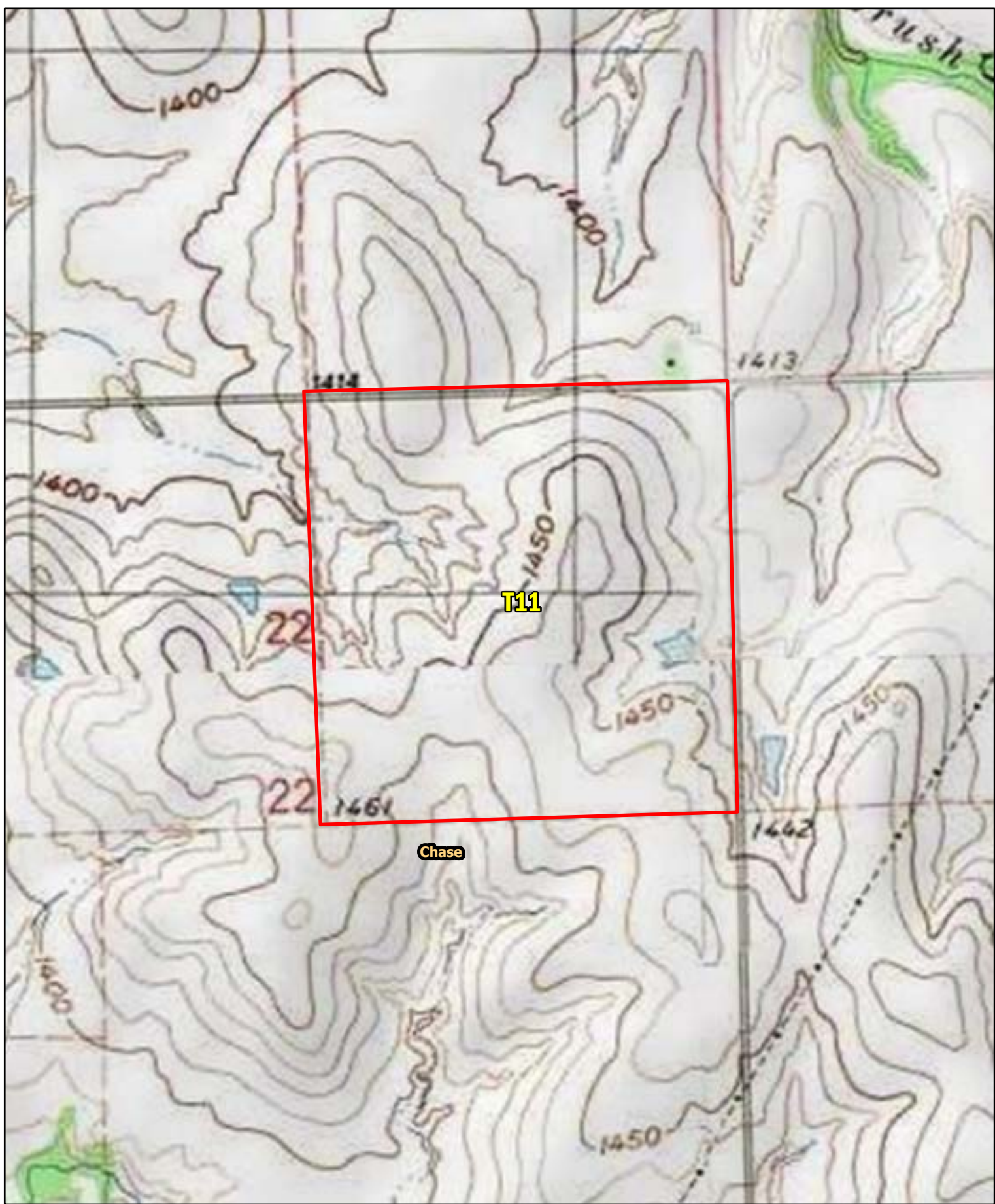
Map Symbol	Name	Non-IRR LCC	IRR LCC	ACRES
4746	Labette-Sogn silty clay loam, 0 to 8 percent slopes	IVe	IIIe	72.6
4783	Tully silty clay loam, 3 to 7 percent slopes	IIIe	IIIe	35.6
4740	Labette silty clay loam, 1 to 3 percent slopes	IIe	IIe	21.1
4744	Labette-Dwight complex, 0 to 3 percent slopes	IIe	IIe	13.4
4784	Tully silty clay loam, 3 to 7 percent slopes, eroded	IIIe	IIIe	10.9
TOTAL				153.7



**A-22649**  
**Marion & Chase Co., Kansas**

Latitude: 38.126°N  
 Longitude: 96.7539°W  
 Imagery Source: USDA NAIP  
 Soil Data Source: USDA NRCS  
 Boundaries are Approximate





**A-22649**  
**Marion & Chase Co., Kansas**

Latitude: 38.126°N  
Longitude: 96.7543°W  
Imagery Source: USDA NAIP  
Soil Data Source: USDA NRCS  
Boundaries are Approximate