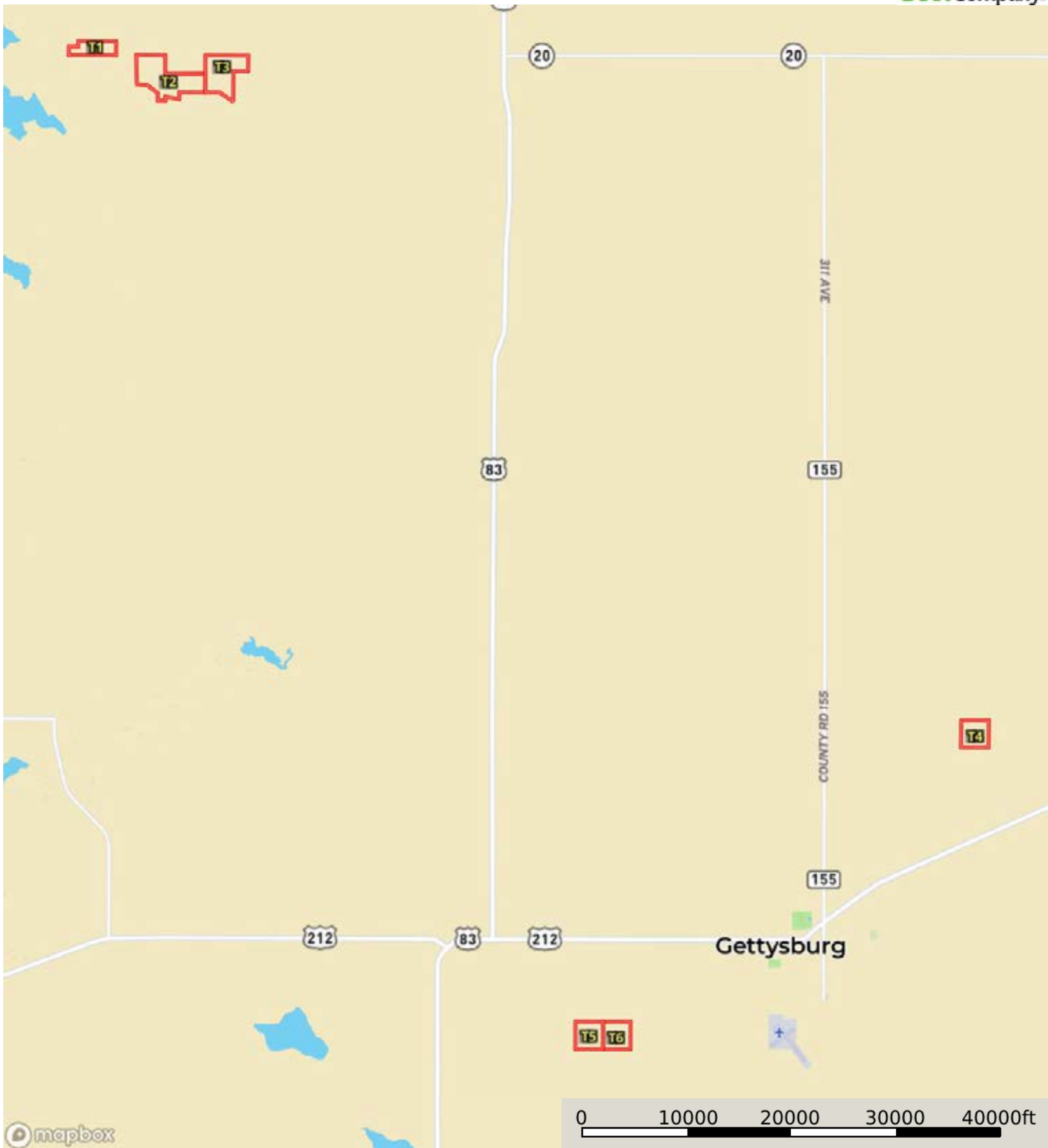


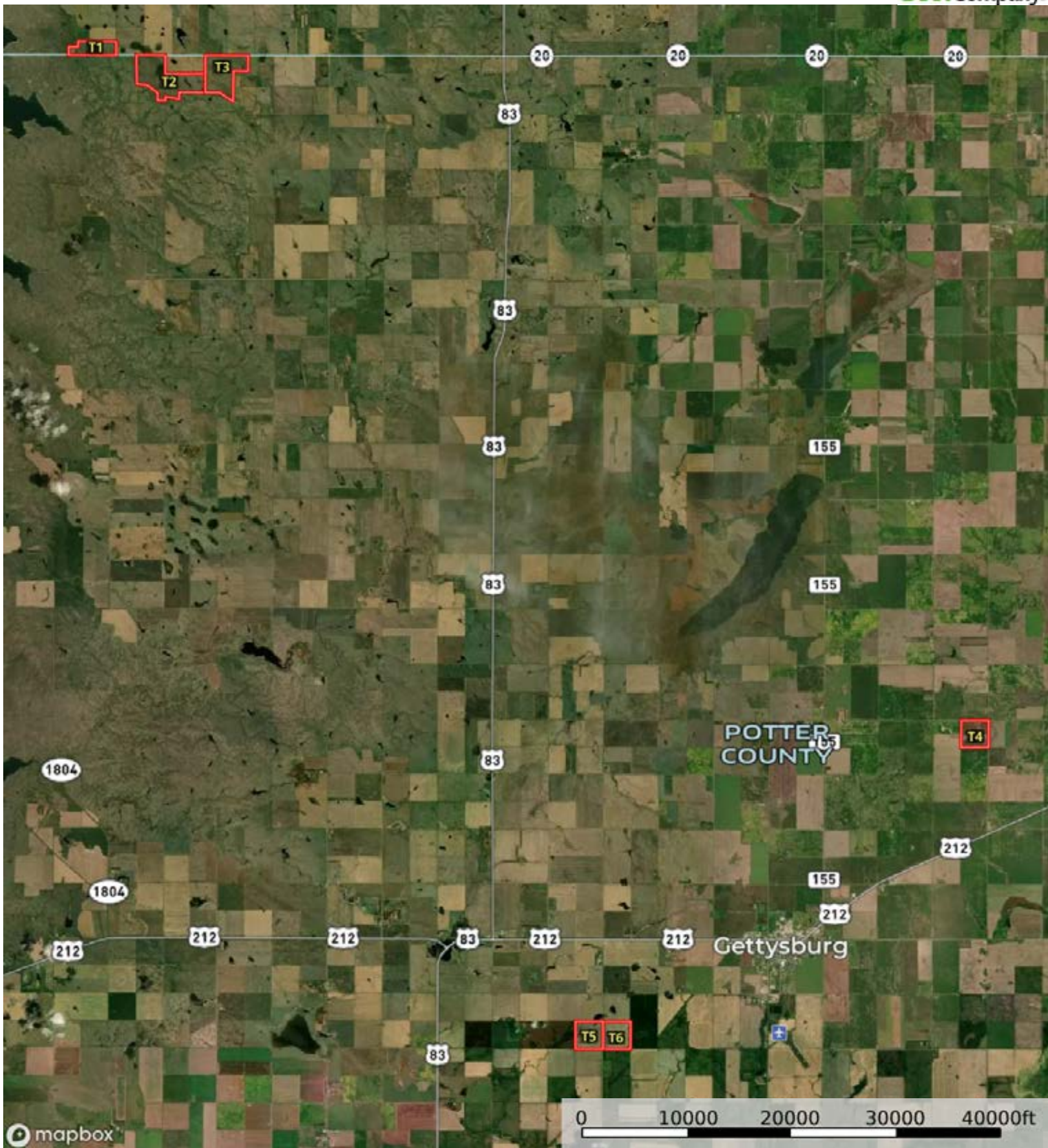
A-22682


Potter County, Walworth County, South Dakota, 1270.27 AC +/-



mapbox

Boundary




 Boundary



A-22682

Potter County, Walworth County, South Dakota, 1270.27 AC +/-



 Boundary

A-22682

Potter County, Walworth County, South Dakota, 1270.27 AC +/-



Boundary



|  Boundary 126.63 ac

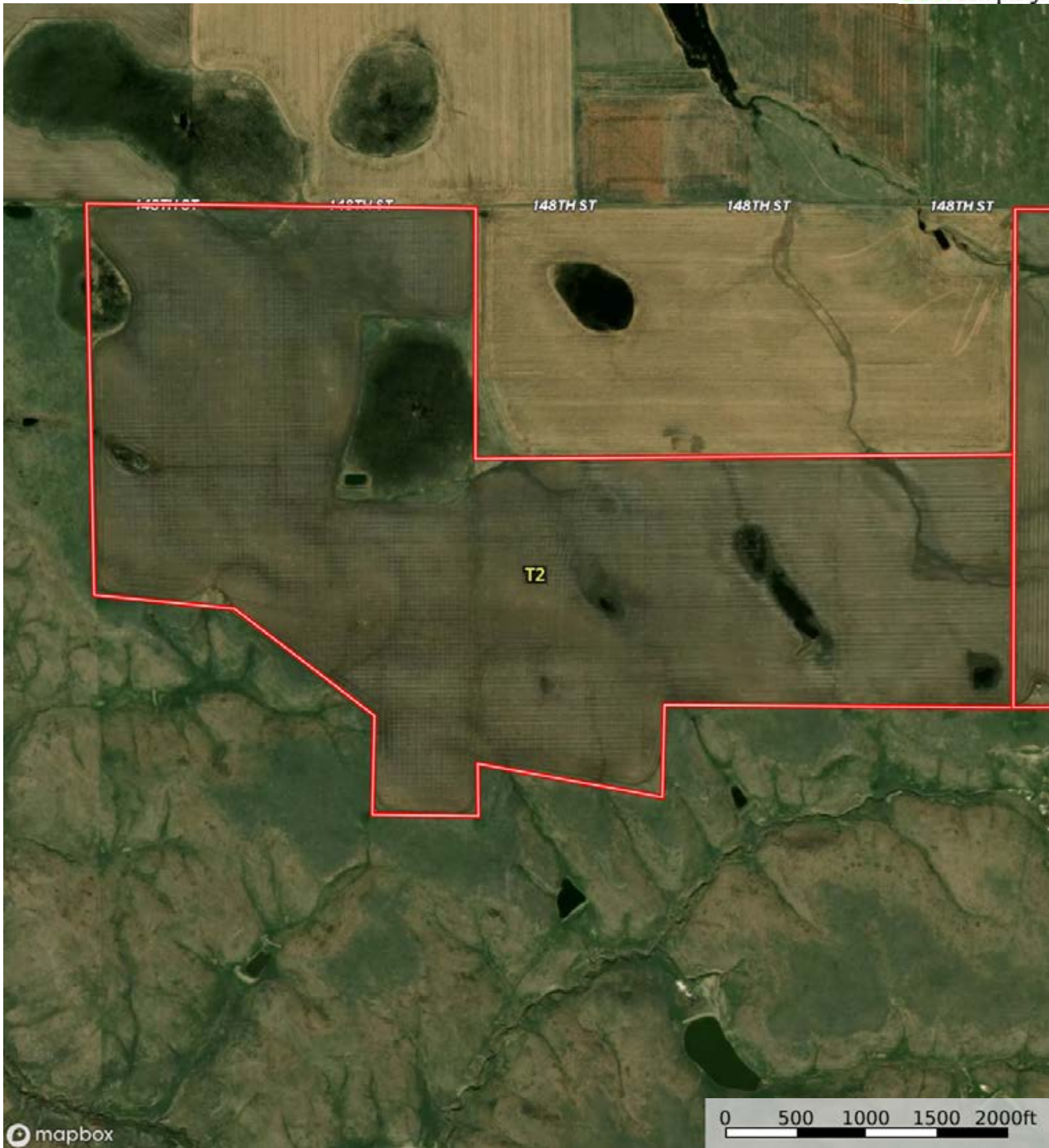
SOIL CODE	SOIL DESCRIPTION	ACRES	%	CPI	NCCPI	CAP
AgB	Agar silt loam, 2 to 6 percent slopes	89.01	70.29	86	60	2e
HhB	Highmore silt loam, 2 to 6 percent slopes	26.58	20.99	91	58	2e
Ho	Hoven silt loam, 0 to 1 percent slopes	9.95	7.86	15	4	6s
SuC	Sully silt loam, 2 to 9 percent slopes	1.08	0.85	38	41	4e
EpB	Eakin-Peno complex, 2 to 6 percent slopes	0.01	0.01	73	48	2e
TOTALS		126.63(*)	100%	81.06	55.02	2.33


(\*) Total acres may differ in the second decimal compared to the sum of each acreage soil. This is due to a round error because we only show the acres of each soil with two decimal.



A-22682

Potter County, Walworth County, South Dakota, 1270.27 AC +/-

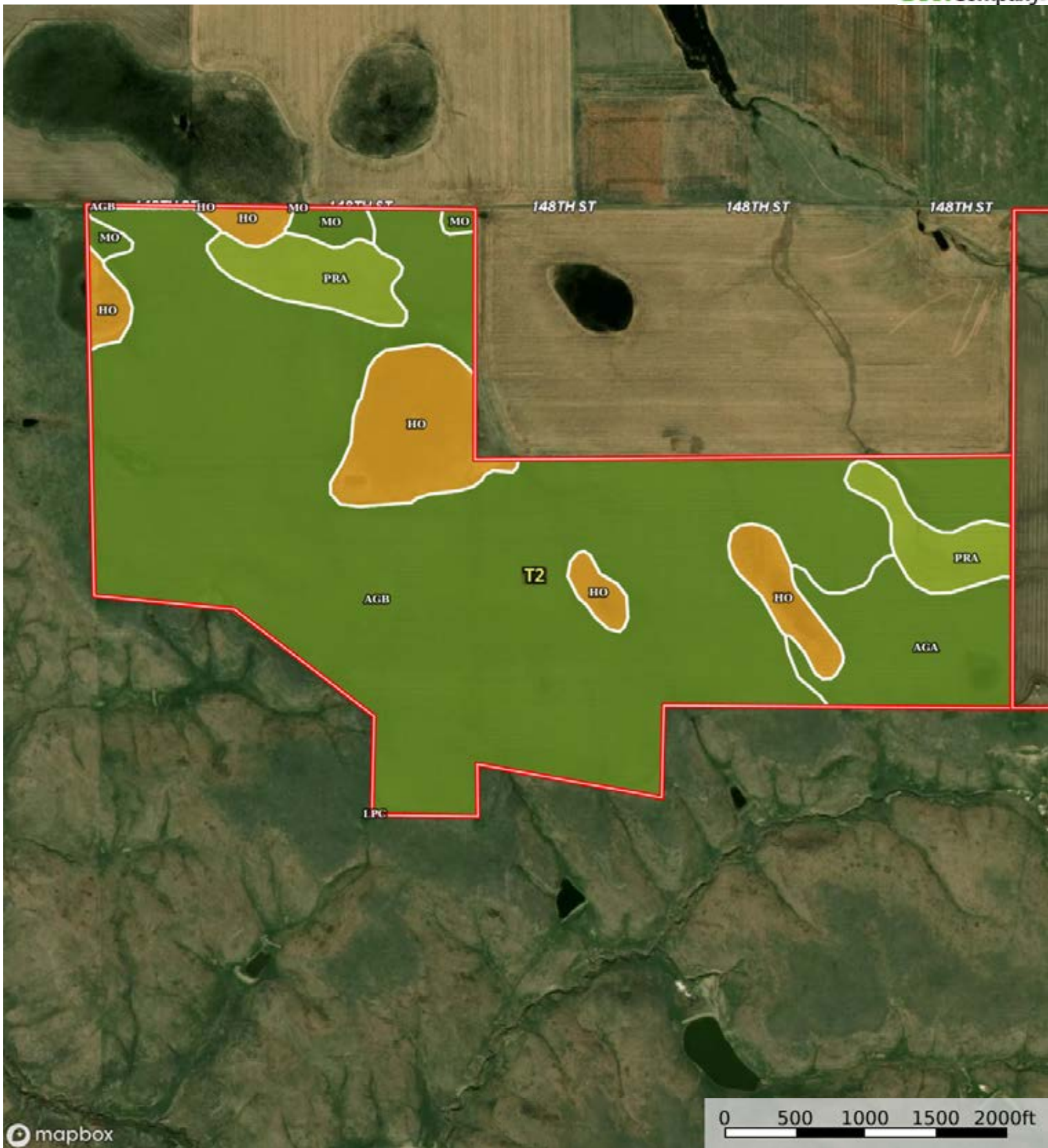


 Boundary



A-22682

Potter County, Walworth County, South Dakota, 1270.27 AC +/-



Boundary

|  Boundary 384.82 ac

SOIL CODE	SOIL DESCRIPTION	ACRES	%	CPI	NCCPI	CAP
AgB	Agar silt loam, 2 to 6 percent slopes	287.57	74.73	86	60	2e
Ho	Hoven silt loam, 0 to 1 percent slopes	39.23	10.19	15	4	6s
AgA	Agar silt loam, 0 to 2 percent slopes	28.63	7.44	92	60	2c
PrA	Promise clay, 0 to 3 percent slopes	23.81	6.19	69	20	3s
Mo	Mobridge silt loam, 0 to 2 percent slopes	5.55	1.44	94	65	2c
LpC	Lowry-Peno complex, 6 to 9 percent slopes	0.03	0.01	57	43	3e
TOTALS		384.82(*)	100%	78.27	51.89	2.47

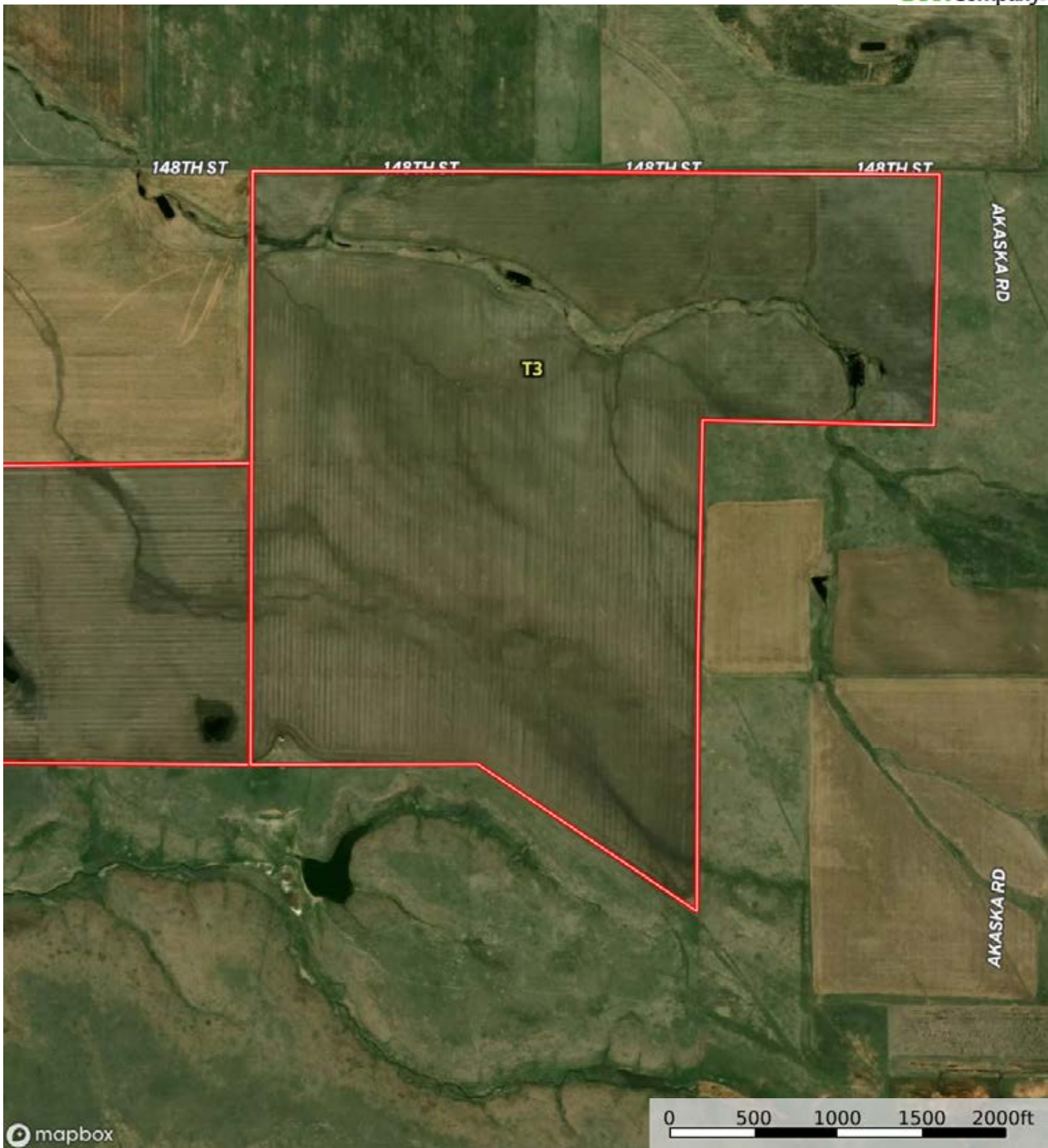
(\*) Total acres may differ in the second decimal compared to the sum of each acreage soil. This is due to a round error because we only show the acres of each soil with two decimal.




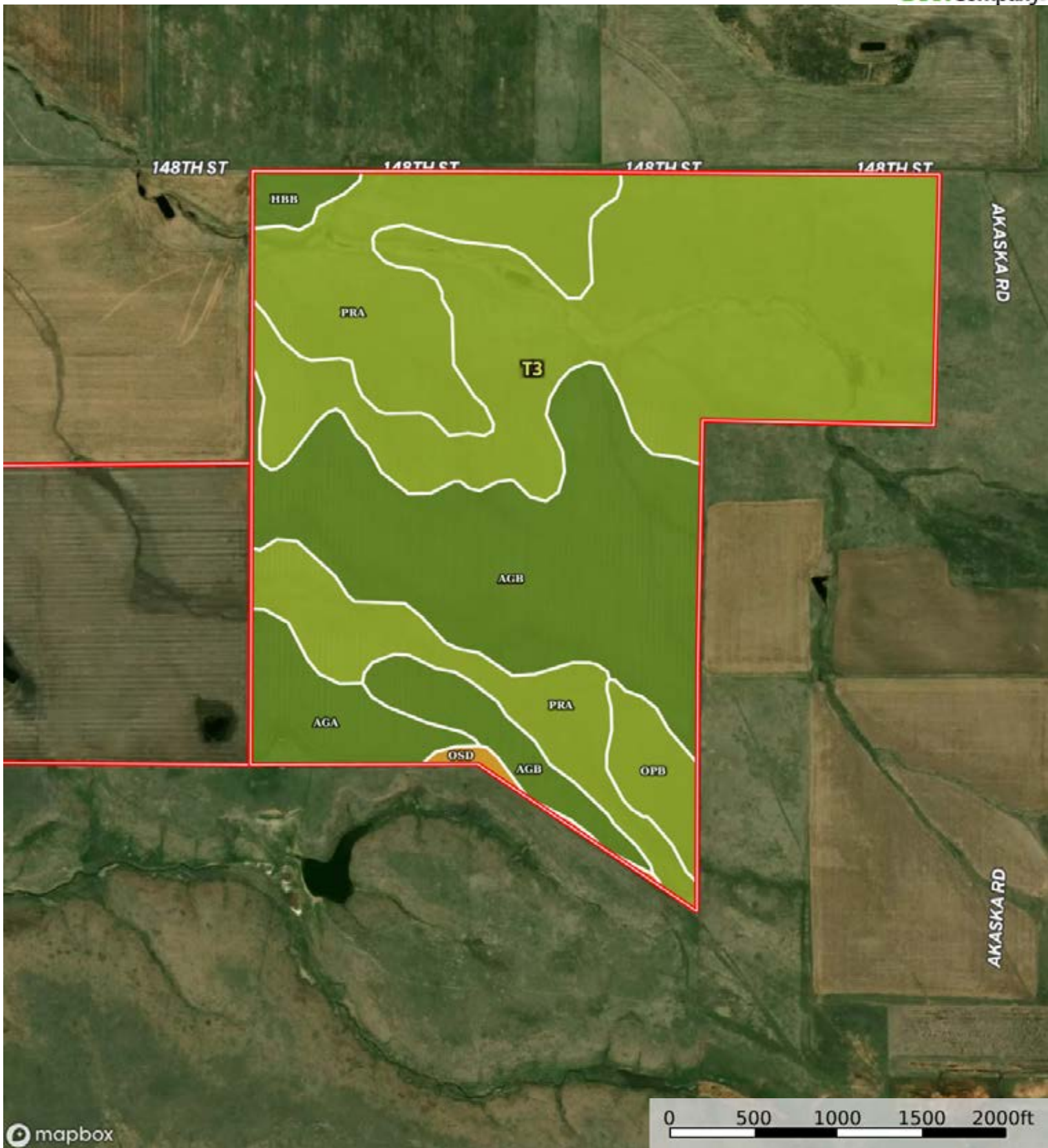



A-22682

Potter County, Walworth County, South Dakota, 1270.27 AC +/-



 Boundary



 Boundary



|  Boundary 279.47 ac

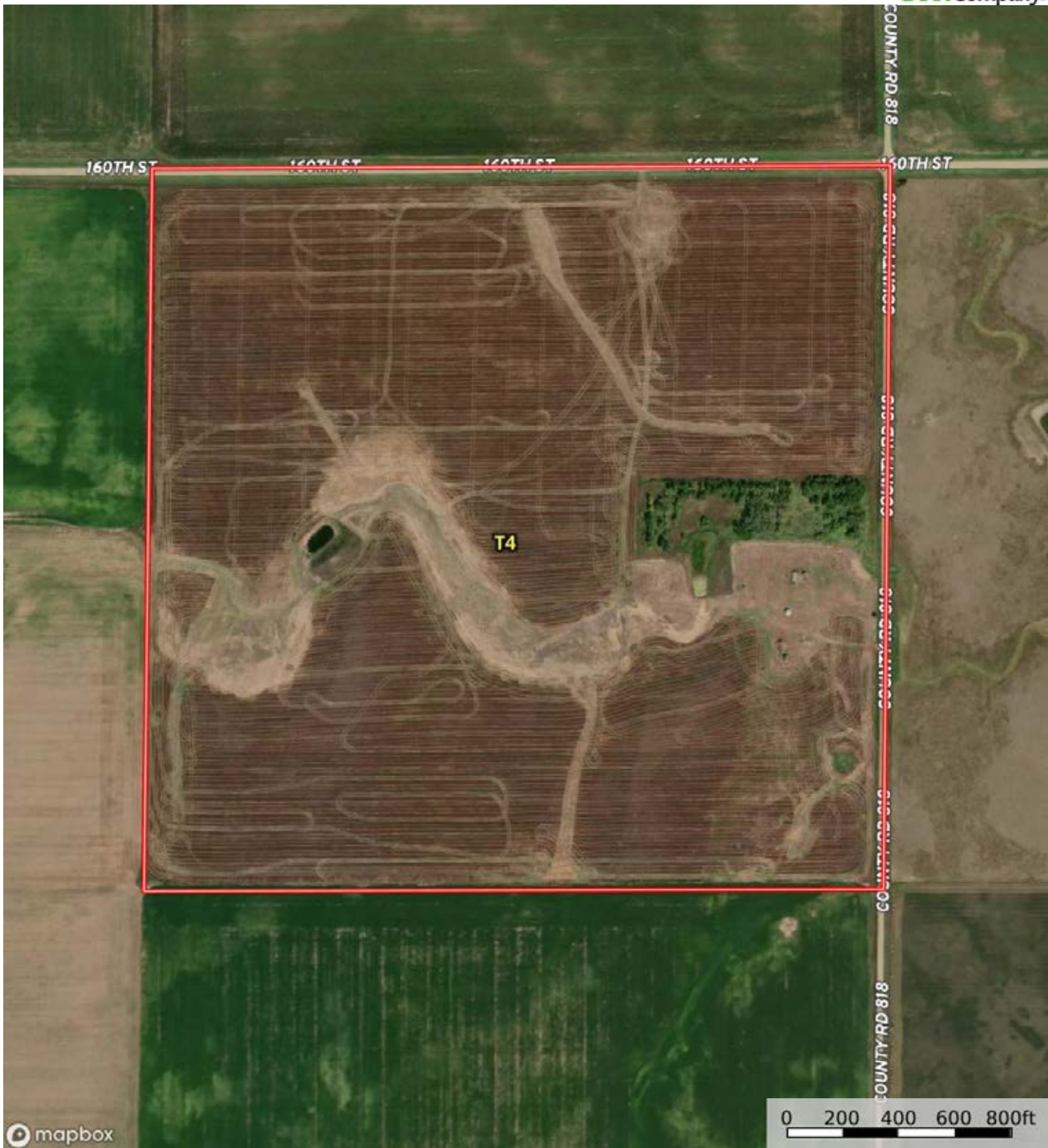
SOIL CODE	SOIL DESCRIPTION	ACRES	%	CPI	NCCPI	CAP
OpB	Opal clay, 3 to 6 percent slopes	114.92	41.12	60	21	3e
AgB	Agar silt loam, 2 to 6 percent slopes	80.43	28.78	86	59	2e
PrA	Promise clay, 0 to 3 percent slopes	64.48	23.07	69	20	3s
AgA	Agar silt loam, 0 to 2 percent slopes	14.19	5.08	92	60	2c
HbB	Highmore silt loam, 2 to 6 percent slopes	3.8	1.36	91	58	2e
OsD	Opal-Sansarc clays, 6 to 15% slopes	1.65	0.59	38	17	6e
TOTALS		279.47(*)	100%	71.48	34.17	2.67

(\*) Total acres may differ in the second decimal compared to the sum of each acreage soil. This is due to a round error because we only show the acres of each soil with two decimal.



A-22682

Potter County, Walworth County, South Dakota, 1270.27 AC +/-



mapbox

0 200 400 600 800ft

Boundary



A-22682

Potter County, Walworth County, South Dakota, 1270.27 AC +/-



Boundary

|  Boundary 156.7 ac

SOIL CODE	SOIL DESCRIPTION	ACRES	%	CPI	NCCPI	CAP
HbB	Highmore silt loam, 2 to 6 percent slopes	60.92	38.88	91	58	2e
Mo	Mobridge silt loam, 0 to 2 percent slopes	38.5	24.57	94	65	2c
EpB	Eakin-Peno complex, 2 to 6 percent slopes	28.86	18.42	73	48	2e
HbA	Highmore silt loam, 0 to 2 percent slopes	23.5	15.0	92	58	2c
RaB	Eakin-Raber complex, 2 to 6 percent slopes	4.92	3.14	76	55	2e
TOTALS		156.7(*)	100%	88.1	57.78	2.0

(\*) Total acres may differ in the second decimal compared to the sum of each acreage soil. This is due to a round error because we only show the acres of each soil with two decimal.





A-22682

Potter County, Walworth County, South Dakota, 1270.27 AC +/-



mapbox

0 200 400 600 800ft

Boundary

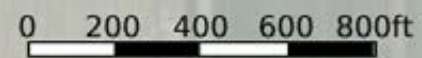
id. The information contained herein was obtained from sources deemed to be reliable. Land id™ Services makes no warranties or guarantees as to the completeness or accuracy thereof.

A-22682

Potter County, Walworth County, South Dakota, 1270.27 AC +/-



mapbox



Boundary

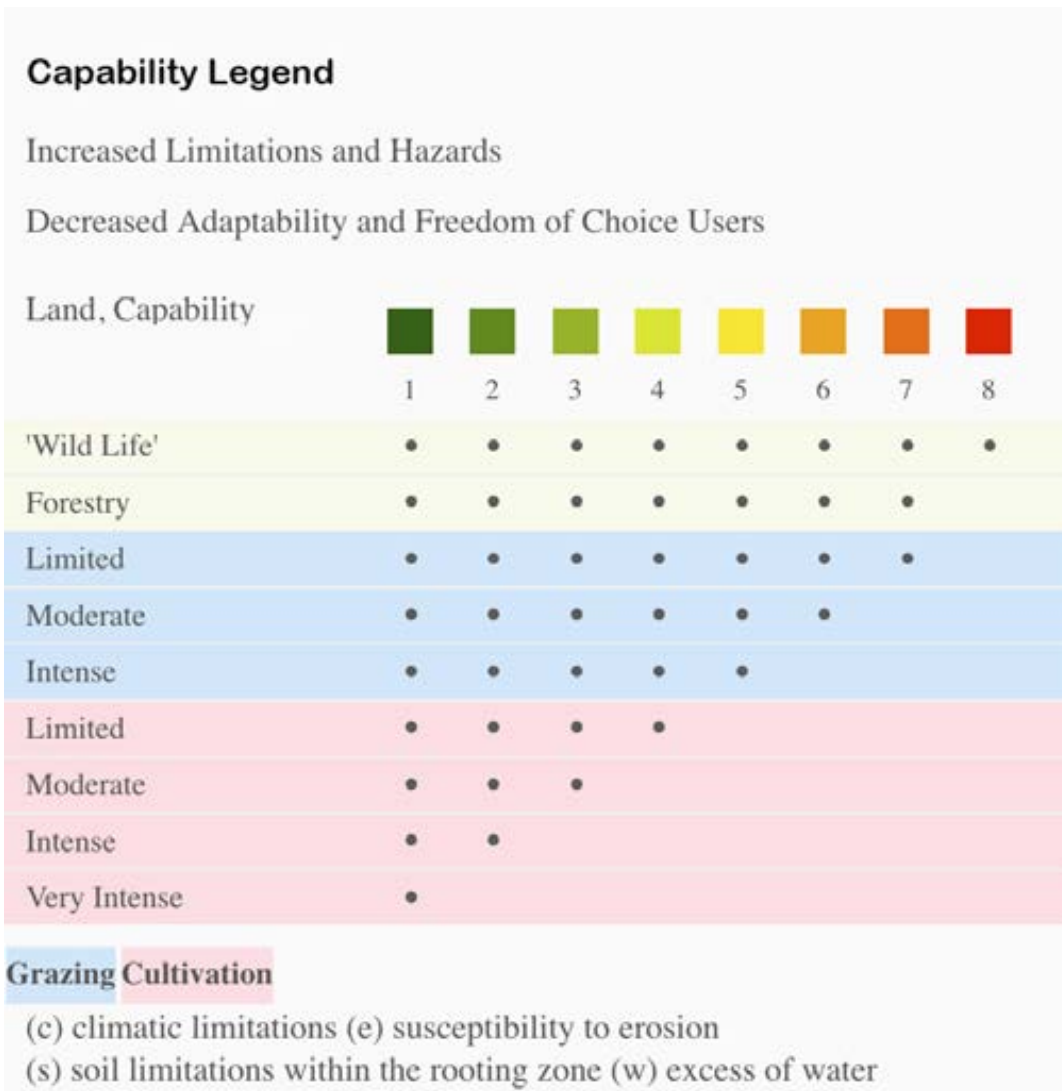
id. The information contained herein was obtained from sources deemed to be reliable. Land id™ Services makes no warranties or guarantees as to the completeness or accuracy thereof.



|  Boundary 160.77 ac

SOIL CODE	SOIL DESCRIPTION	ACRES	%	CPI	NCCPI	CAP
HbA	Highmore silt loam, 0 to 2 percent slopes	39.81	24.76	92	58	2c
EaA	Eakin-Raber complex, 0 to 2 percent slopes	30.18	18.77	84	56	2c
Mo	Mobridge silt loam, 0 to 2 percent slopes	26.55	16.51	94	65	2c
HbB	Highmore silt loam, 2 to 6 percent slopes	24.14	15.01	91	58	2e
EpB	Eakin-Peno complex, 2 to 6 percent slopes	23.42	14.57	73	48	2e
HfA	Highmore-Mobridge silt loams, 0 to 2 percent slopes	15.54	9.67	87	60	2c
Te	Tetonka silt loam, 0 to 1 percent slopes	1.13	0.7	57	17	4w
TOTALS		160.77(*)	100%	87.18	57.23	2.01


(\*) Total acres may differ in the second decimal compared to the sum of each acreage soil. This is due to a round error because we only show the acres of each soil with two decimal.



A-22682

Potter County, Walworth County, South Dakota, 1270.27 AC +/-



 Boundary



A-22682

Potter County, Walworth County, South Dakota, 1270.27 AC +/-



Boundary

|  Boundary 159.98 ac

SOIL CODE	SOIL DESCRIPTION	ACRES	%	CPI	NCCPI	CAP
EaA	Eakin-Raber complex, 0 to 2 percent slopes	79.83	49.9	84	56	2c
HbA	Highmore silt loam, 0 to 2 percent slopes	71.85	44.91	92	58	2c
HfA	Highmore-Mobridge silt loams, 0 to 2 percent slopes	5.85	3.66	87	60	2c
EpB	Eakin-Peno complex, 2 to 6 percent slopes	2.45	1.53	73	48	2e
TOTALS		159.98(*)	100%	87.53	56.92	2.0

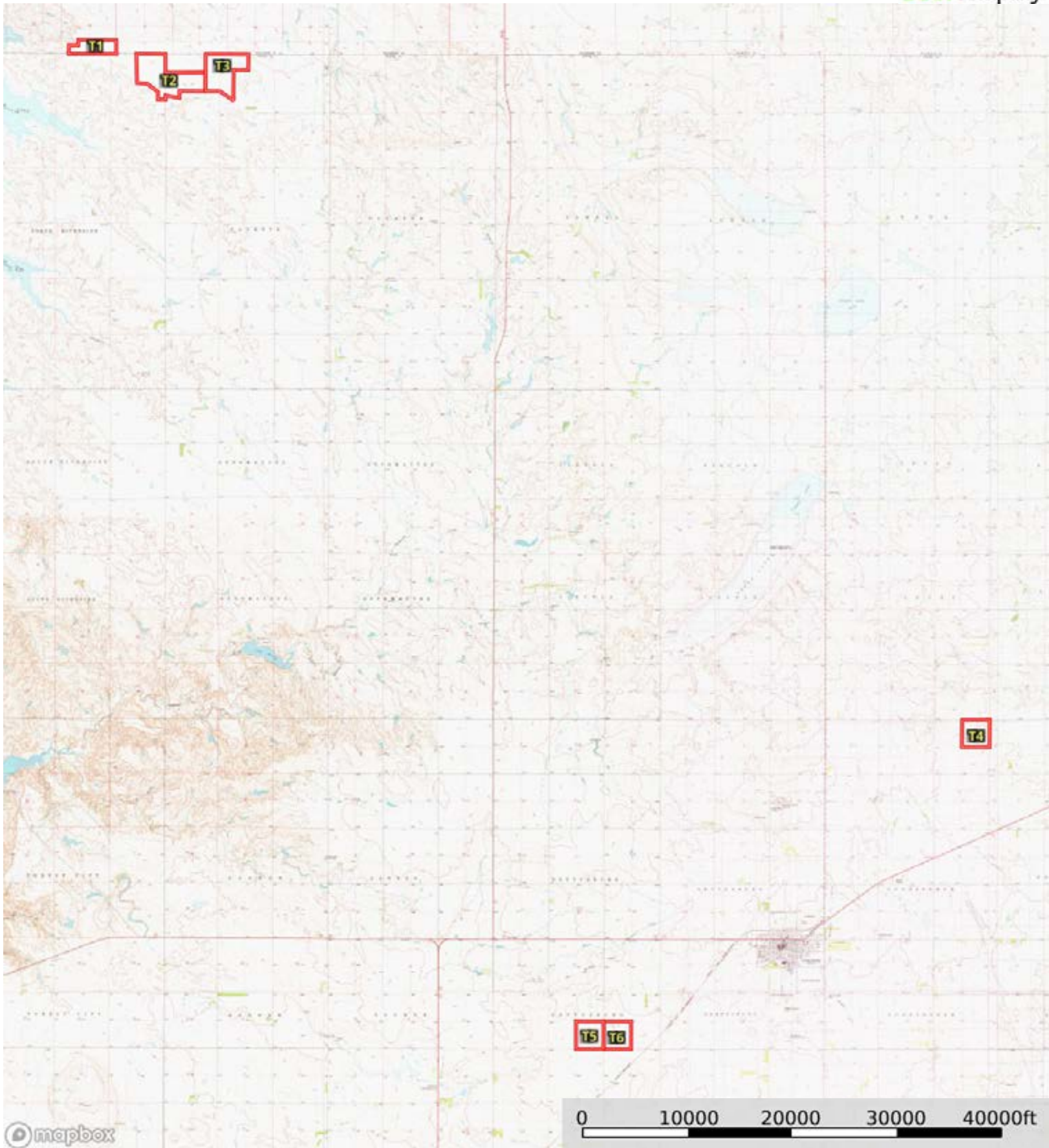
(\*) Total acres may differ in the second decimal compared to the sum of each acreage soil. This is due to a round error because we only show the acres of each soil with two decimal.






A-22682

Potter County, Walworth County, South Dakota, 1270.27 AC +/-



 Boundary