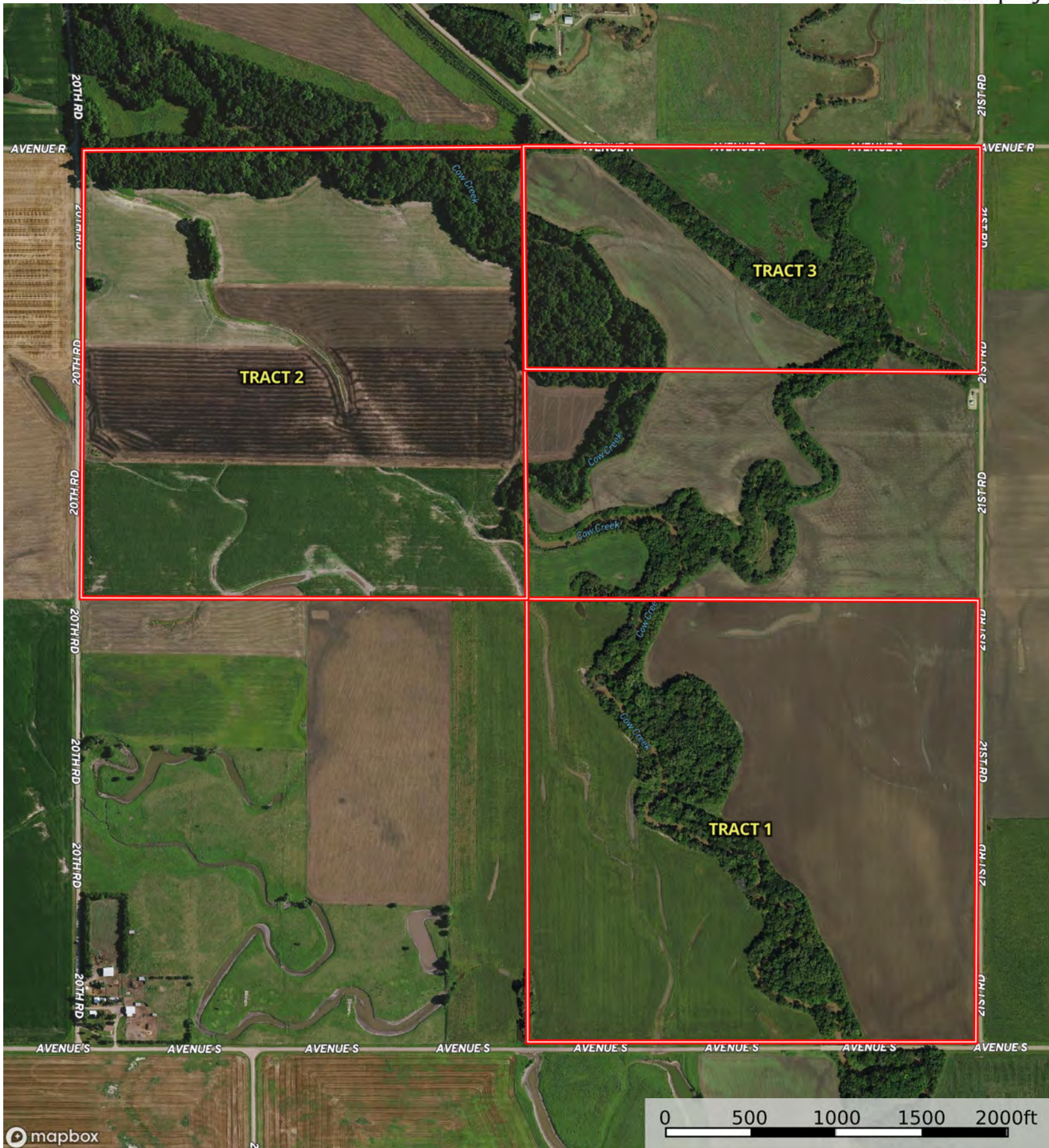


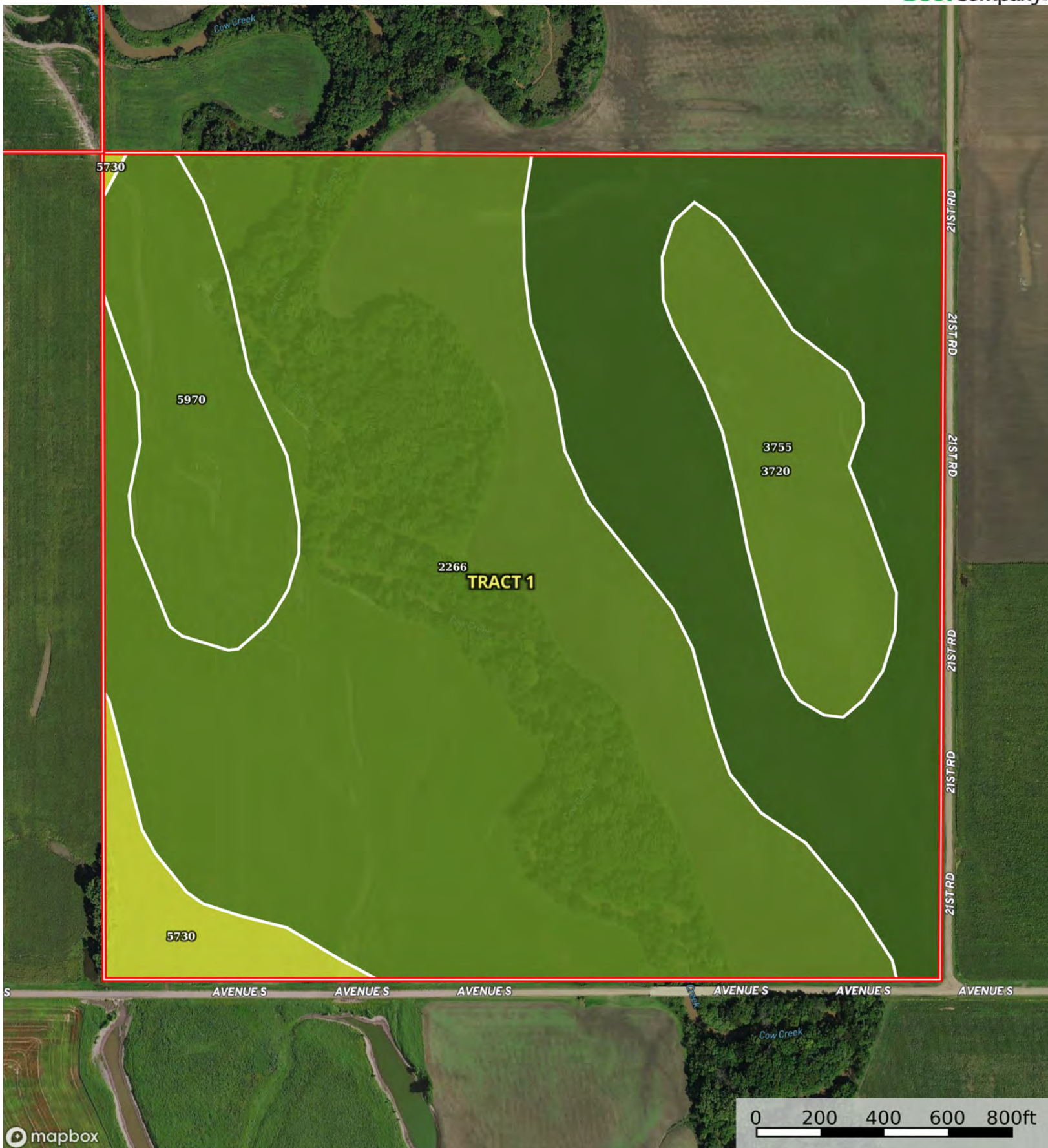
Boundary





Boundary





Boundary

| Boundary 157.47 ac

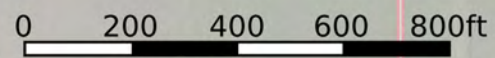
SOIL CODE	SOIL DESCRIPTION	ACRES	%	CPI	NCCPI	CAP
2266	Tobin silt loam, occasionally flooded	84.64	53.75	0	84	2w
3720	Detroit silt loam, rarely flooded	40.23	25.55	0	65	1
5970	Taver loam, 0 to 1 percent slopes	14.02	8.9	0	56	2s
3755	Hord silt loam, rarely flooded	13.29	8.44	0	78	2c
5730	Darlow-Elmer complex, 0 to 2 percent slopes	5.29	3.36	0	41	4s
TOTALS		157.47(*)	100%	-	74.7	1.81

(*) Total acres may differ in the second decimal compared to the sum of each acreage soil. This is due to a round error because we only show the acres of each soil with two decimal.





Boundary

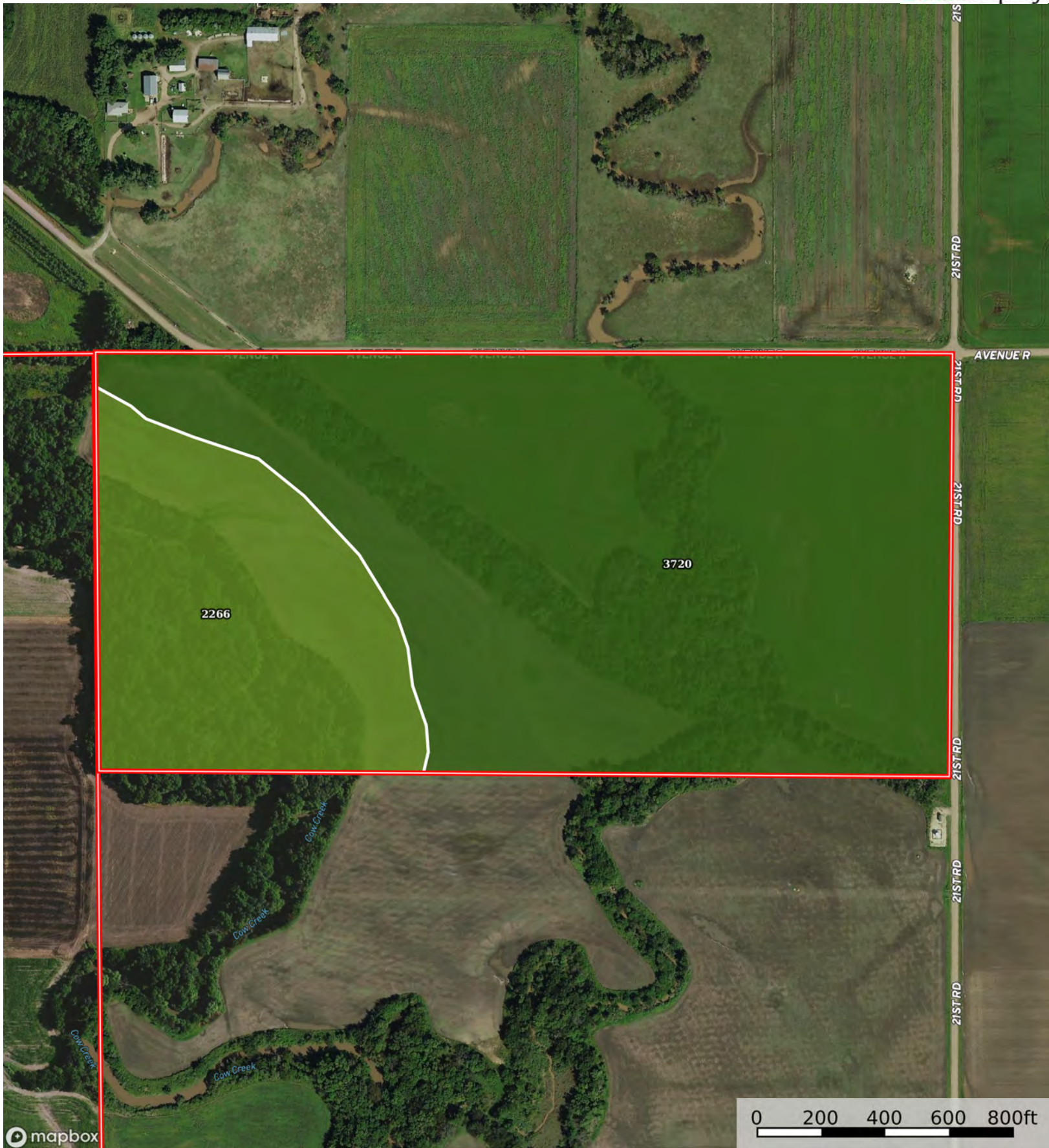


| Boundary 157.24 ac

SOIL CODE	SOIL DESCRIPTION	ACRES	%	CPI	NCCPI	CAP
2266	Tobin silt loam, occasionally flooded	98.62	62.72	0	84	2w
5730	Darlow-Elmer complex, 0 to 2 percent slopes	58.41	37.15	0	41	4s
3720	Detroit silt loam, rarely flooded	0.21	0.13	0	65	1
TOTALS		157.24(*)	100%	-	68.01	2.74

(*) Total acres may differ in the second decimal compared to the sum of each acreage soil. This is due to a round error because we only show the acres of each soil with two decimal.





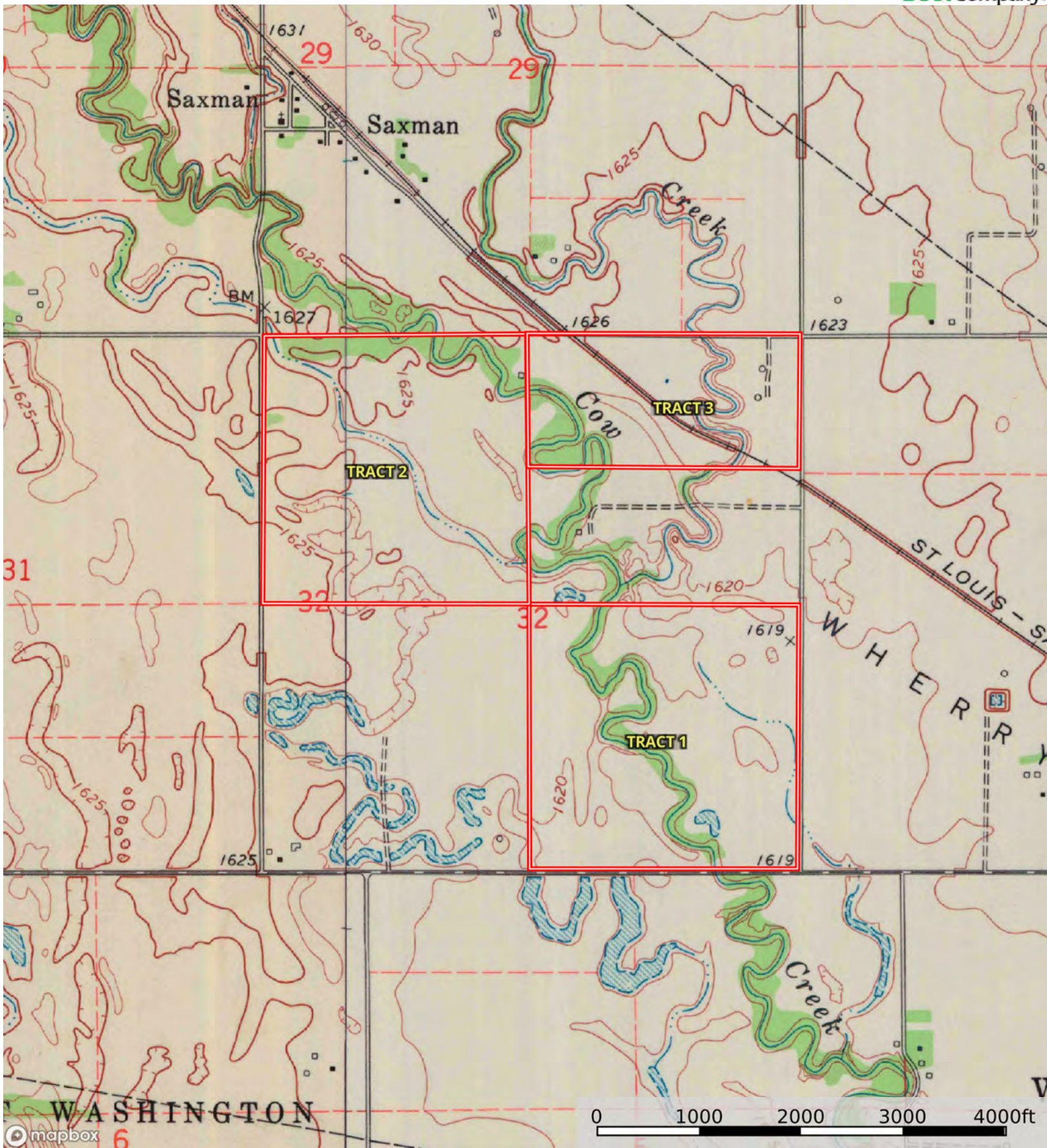
Boundary

| Boundary 80.64 ac

SOIL CODE	SOIL DESCRIPTION	ACRES	%	CPI	NCCPI	CAP
3720	Detroit silt loam, rarely flooded	59.91	74.29	0	65	1
2266	Tobin silt loam, occasionally flooded	20.73	25.71	0	84	2w
TOTALS		80.64(*)	100%	-	69.88	1.26

(*) Total acres may differ in the second decimal compared to the sum of each acreage soil. This is due to a round error because we only show the acres of each soil with two decimal.





Boundary

