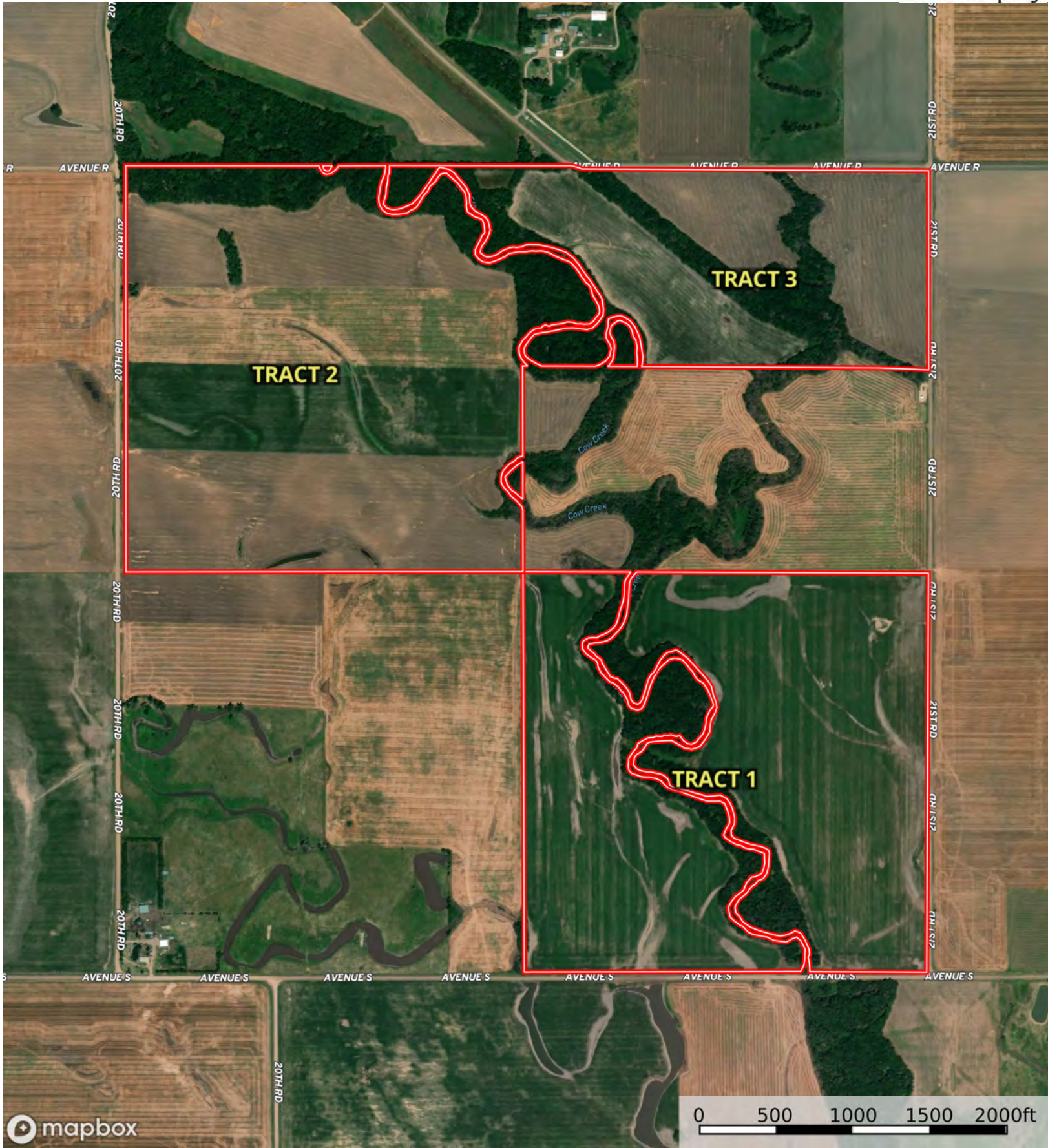


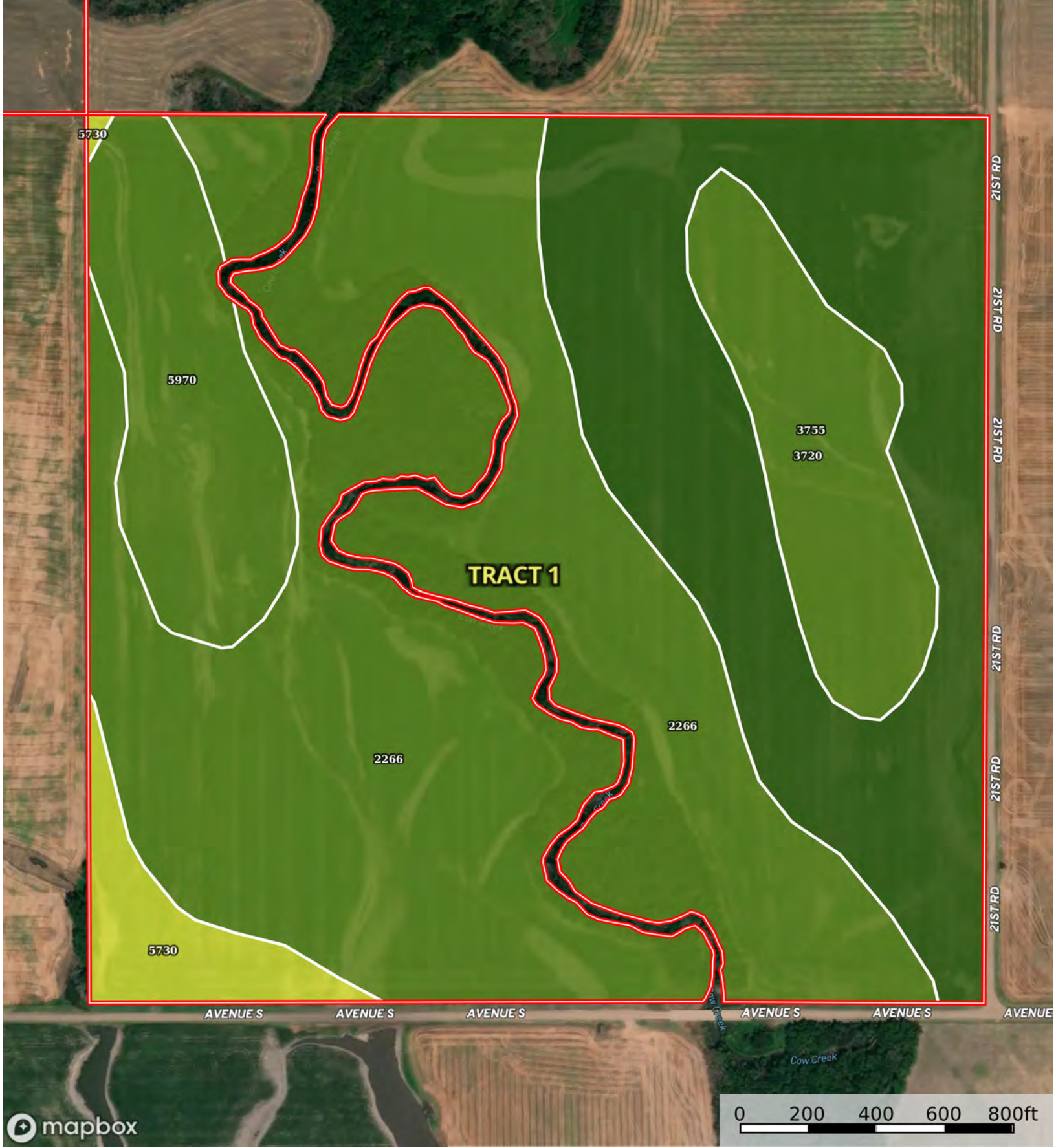
Boundary

A-22813

Reno County, Rice County, Kansas, 790.3 AC +/-



Boundary



Boundary

|  All Polygons 153.74 ac

SOIL CODE	SOIL DESCRIPTION	ACRES	%	CPI	NCCPI	CAP
2266	Tobin silt loam, occasionally flooded	80.86	52.59	0	84	2w
3720	Detroit silt loam, rarely flooded	40.23	26.17	0	65	1
5970	Taver loam, 0 to 1 percent slopes	13.99	9.1	0	56	2s
3755	Hord silt loam, rarely flooded	13.29	8.64	0	78	2c
5730	Darlow-Elmer complex, 0 to 2 percent slopes	5.37	3.49	0	41	4s
TOTALS		153.74(*)	100%	-	74.45	1.81

(\*) Total acres may differ in the second decimal compared to the sum of each acreage soil. This is due to a round error because we only show the acres of each soil with two decimal.

| Boundary 88.28 ac

SOIL CODE	SOIL DESCRIPTION	ACRES	%	CPI	NCCPI	CAP
3720	Detroit silt loam, rarely flooded	40.23	45.57	0	65	1
2266	Tobin silt loam, occasionally flooded	34.76	39.37	0	84	2w
3755	Hord silt loam, rarely flooded	13.29	15.05	0	78	2c
TOTALS		88.28(*)	100%	-	74.43	1.54

(\*) Total acres may differ in the second decimal compared to the sum of each acreage soil. This is due to a round error because we only show the acres of each soil with two decimal.

| Boundary 65.46 ac

SOIL CODE	SOIL DESCRIPTION	ACRES	%	CPI	NCCPI	CAP
2266	Tobin silt loam, occasionally flooded	46.1	70.42	0	84	2w
5970	Taver loam, 0 to 1 percent slopes	13.99	21.37	0	56	2s
5730	Darlow-Elmer complex, 0 to 2 percent slopes	5.37	8.2	0	41	4s
TOTALS		65.46(*)	100%	-	74.49	2.16









(\*) Total acres may differ in the second decimal compared to the sum of each acreage soil. This is due to a round error because we only show the acres of each soil with two decimal.

## Capability Legend

Increased Limitations and Hazards

Decreased Adaptability and Freedom of Choice Users

Land, Capability

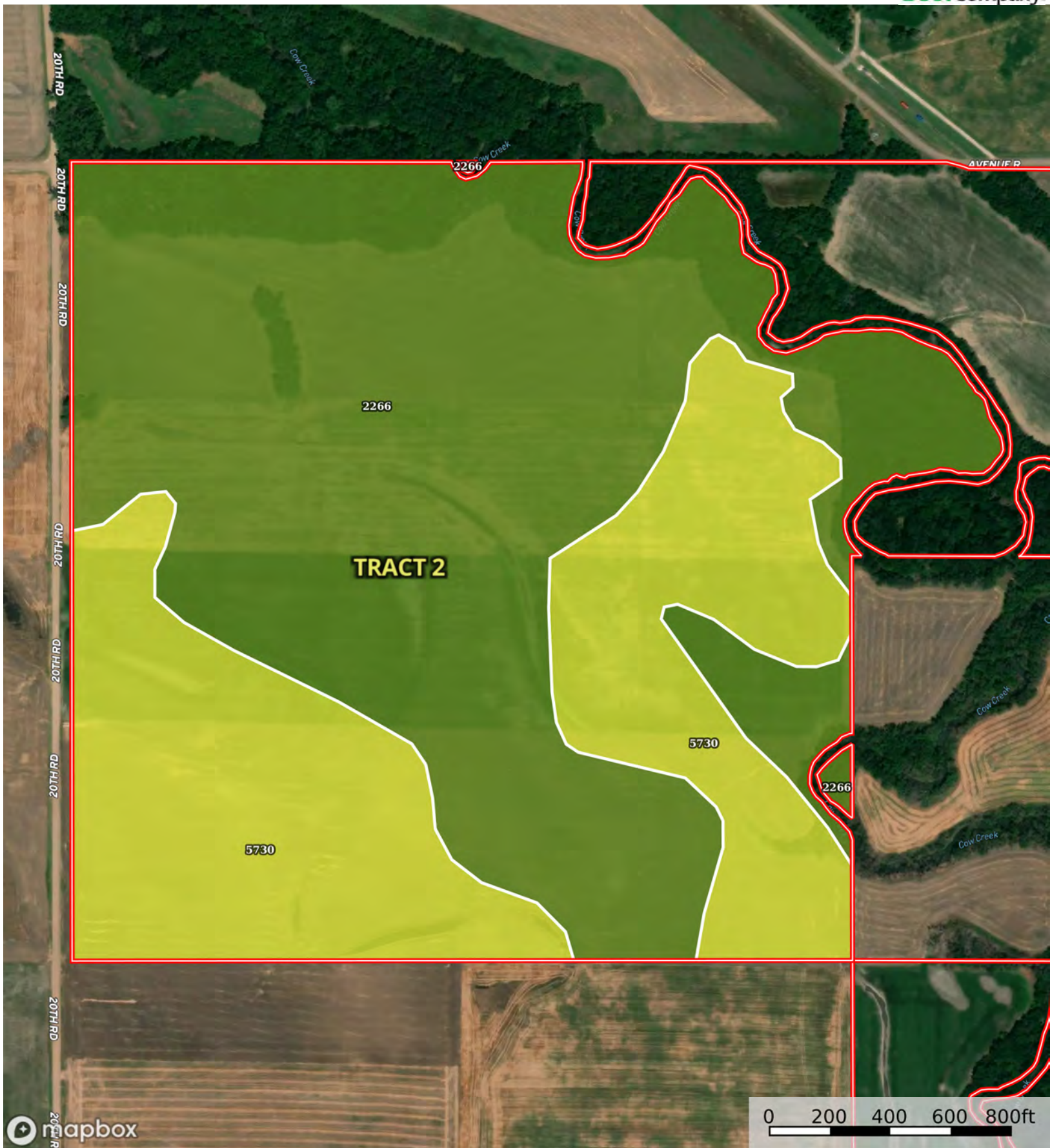
								
	1	2	3	4	5	6	7	8
'Wild Life'	•	•	•	•	•	•	•	•
Forestry	•	•	•	•	•	•	•	
Limited	•	•	•	•	•	•	•	
Moderate	•	•	•	•	•	•		
Intense	•	•	•	•	•			
Limited	•	•	•	•				
Moderate	•	•	•					
Intense	•	•						
Very Intense	•							

## Grazing Cultivation

(c) climatic limitations (e) susceptibility to erosion

(s) soil limitations within the rooting zone (w) excess of water

Reno County, Rice County, Kansas, 790.3 AC +/-



Boundary



The information contained herein was obtained from sources deemed to be reliable.

Land id™ Services makes no warranties or guarantees as to the completeness or accuracy thereof.

|  All Polygons 154.97 ac

SOIL CODE	SOIL DESCRIPTION	ACRES	%	CPI	NCCPI	CAP
2266	Tobin silt loam, occasionally flooded	97.1	62.66	0	84	2w
5730	Darlow-Elmer complex, 0 to 2 percent slopes	57.87	37.34	0	41	4s
TOTALS		154.97(*)	100%	-	67.94	2.75

(\*) Total acres may differ in the second decimal compared to the sum of each acreage soil. This is due to a round error because we only show the acres of each soil with two decimal.

| Boundary 154.54 ac

SOIL CODE	SOIL DESCRIPTION	ACRES	%	CPI	NCCPI	CAP
2266	Tobin silt loam, occasionally flooded	96.67	62.55	0	84	2w
5730	Darlow-Elmer complex, 0 to 2 percent slopes	57.87	37.45	0	41	4s
TOTALS		154.54(*)	100%	-	67.9	2.75

(\*) Total acres may differ in the second decimal compared to the sum of each acreage soil. This is due to a round error because we only show the acres of each soil with two decimal.

| Boundary 0.4 ac

SOIL CODE	SOIL DESCRIPTION	ACRES	%	CPI	NCCPI	CAP
2266	Tobin silt loam, occasionally flooded	0.4	100	0	84	2w
TOTALS		0.4(*)	100%	-	84.0	2

(\*) Total acres may differ in the second decimal compared to the sum of each acreage soil. This is due to a round error because we only show the acres of each soil with two decimal.

| Boundary 0.03 ac

SOIL CODE	SOIL DESCRIPTION	ACRES	%	CPI	NCCPI	CAP
2266	Tobin silt loam, occasionally flooded	0.03	100	0	84	2w
TOTALS		0.03(*)	100%	-	84.0	2









(\*) Total acres may differ in the second decimal compared to the sum of each acreage soil. This is due to a round error because we only show the acres of each soil with two decimal.

## Capability Legend

Increased Limitations and Hazards

Decreased Adaptability and Freedom of Choice Users

Land, Capability

								
	1	2	3	4	5	6	7	8
'Wild Life'	•	•	•	•	•	•	•	•
Forestry	•	•	•	•	•	•	•	
Limited	•	•	•	•	•	•	•	
Moderate	•	•	•	•	•	•		
Intense	•	•	•	•	•			
Limited	•	•	•	•				
Moderate	•	•	•					
Intense	•	•						
Very Intense	•							

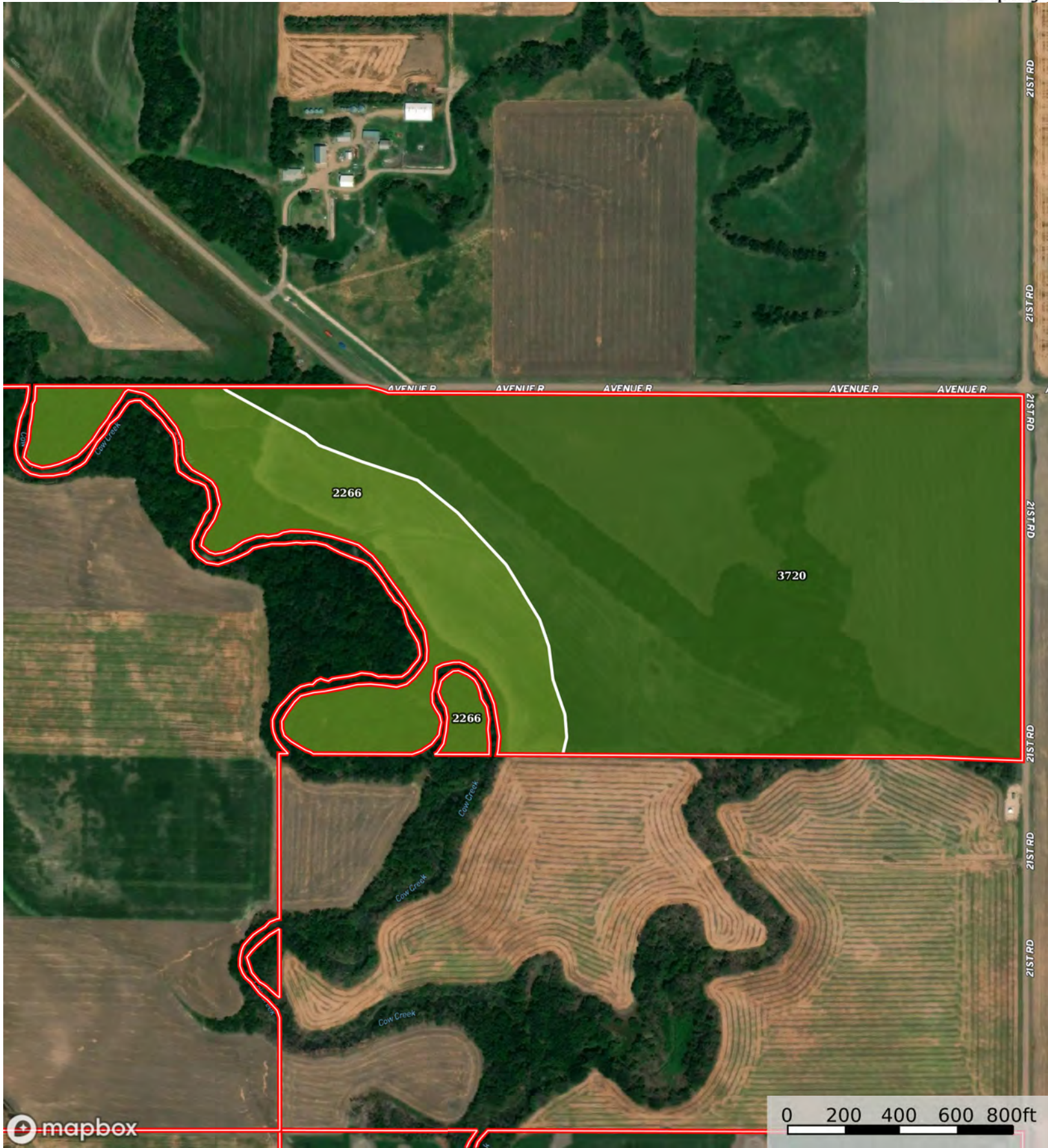
## Grazing Cultivation

(c) climatic limitations (e) susceptibility to erosion

(s) soil limitations within the rooting zone (w) excess of water

A-22813

Reno County, Rice County, Kansas, 790.3 AC +/-



Boundary

|  All Polygons 78.14 ac

SOIL CODE	SOIL DESCRIPTION	ACRES	%	CPI	NCCPI	CAP
3720	Detroit silt loam, rarely flooded	58.51	74.88	0	65	1
2266	Tobin silt loam, occasionally flooded	19.63	25.12	0	84	2w
TOTALS		78.14(*)	100%	-	69.77	1.25

(\*) Total acres may differ in the second decimal compared to the sum of each acreage soil. This is due to a round error because we only show the acres of each soil with two decimal.

| Boundary 77.16 ac

SOIL CODE	SOIL DESCRIPTION	ACRES	%	CPI	NCCPI	CAP
3720	Detroit silt loam, rarely flooded	58.51	75.83	0	65	1
2266	Tobin silt loam, occasionally flooded	18.65	24.17	0	84	2w
TOTALS		77.16(*)	100%	-	69.59	1.24

(\*) Total acres may differ in the second decimal compared to the sum of each acreage soil. This is due to a round error because we only show the acres of each soil with two decimal.

| Boundary 0.98 ac

SOIL CODE	SOIL DESCRIPTION	ACRES	%	CPI	NCCPI	CAP
2266	Tobin silt loam, occasionally flooded	0.98	100	0	84	2w
TOTALS		0.98(*)	100%	-	84.0	2









(\*) Total acres may differ in the second decimal compared to the sum of each acreage soil. This is due to a round error because we only show the acres of each soil with two decimal.

## Capability Legend

Increased Limitations and Hazards

Decreased Adaptability and Freedom of Choice Users

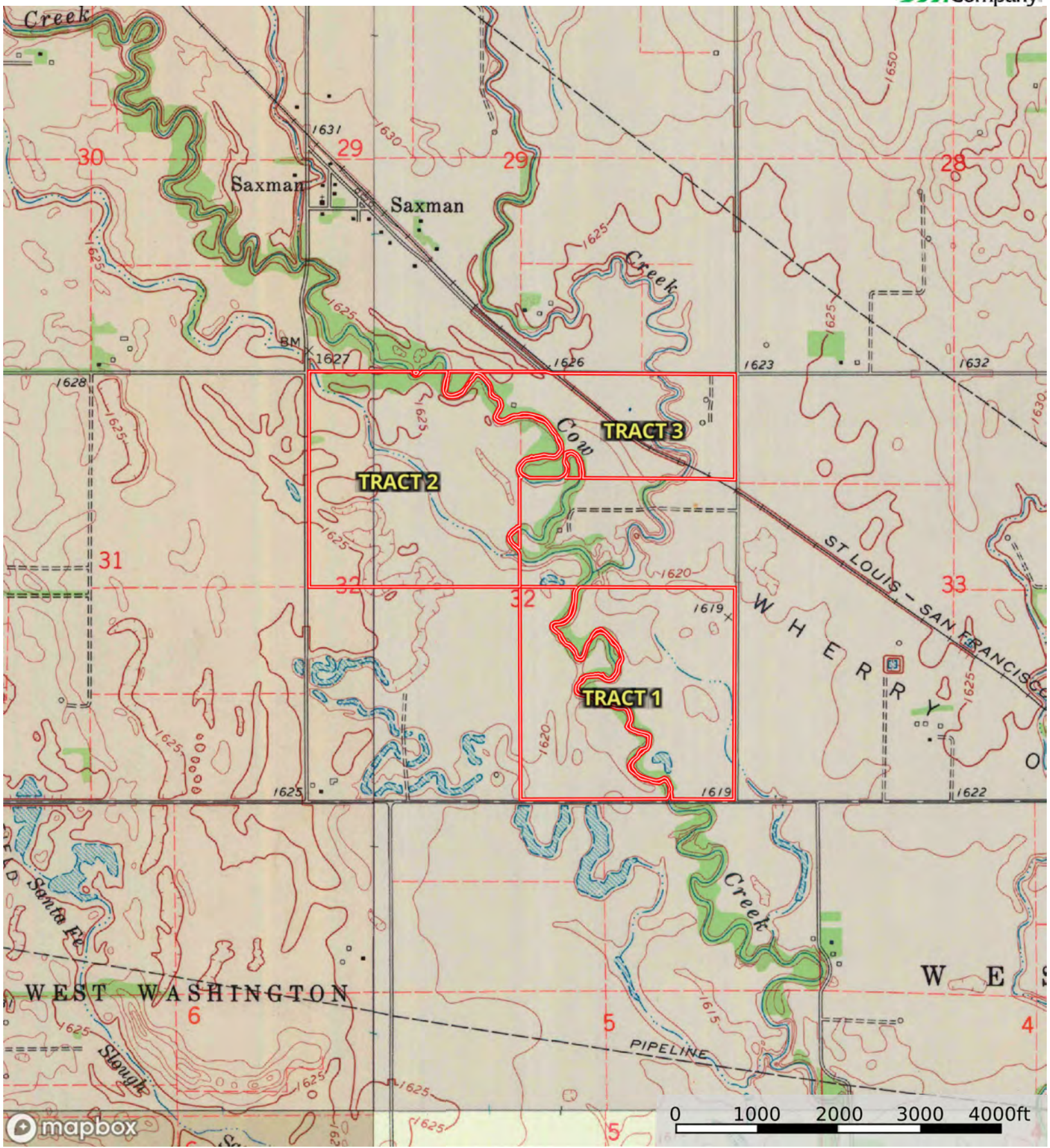
Land, Capability

								
	1	2	3	4	5	6	7	8
'Wild Life'	•	•	•	•	•	•	•	•
Forestry	•	•	•	•	•	•	•	
Limited	•	•	•	•	•	•	•	
Moderate	•	•	•	•	•	•		
Intense	•	•	•	•	•			
Limited	•	•	•	•				
Moderate	•	•	•					
Intense	•	•						
Very Intense	•							

## Grazing Cultivation

(c) climatic limitations (e) susceptibility to erosion

(s) soil limitations within the rooting zone (w) excess of water



Boundary