

Boundary

A-22813

Reno County, Rice County, Kansas, 790.3 AC +/-



Boundary

A-22813

Reno County, Rice County, Kansas, 790.3 AC +/-



Boundary

| Boundary 79.82 ac

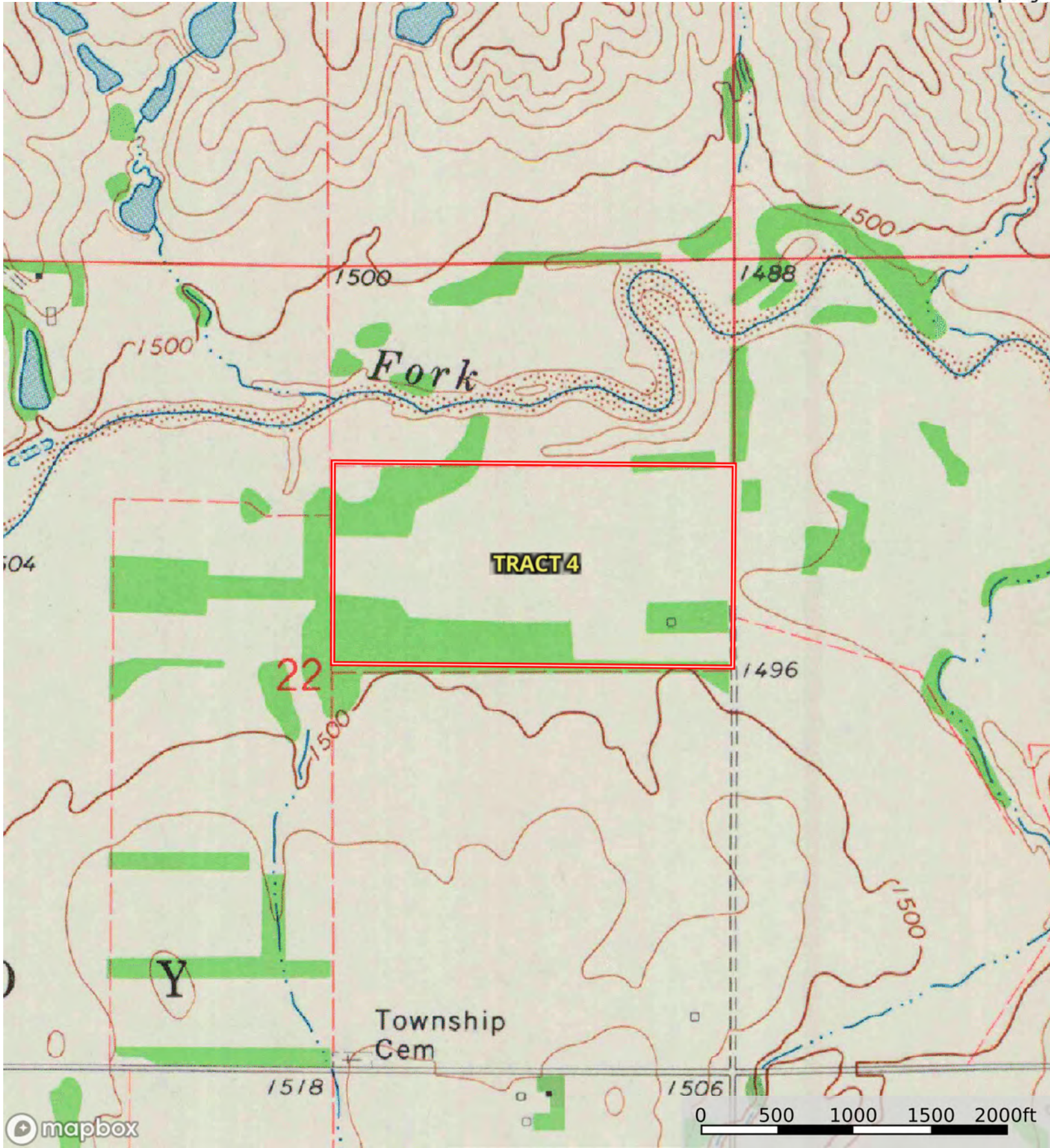
SOIL CODE	SOIL DESCRIPTION	ACRES	%	CPI	NCCPI	CAP
5680	Yaggy-Saxman complex, occasionally flooded	39.51	49.5	0	26	2w
5560	Kanza-Ninnescah sandy loams, frequently flooded	30.19	37.82	0	31	5w
5858	Albion-Shellabarger sandy loams, 1 to 3 percent slopes	10.12	12.68	0	45	3e
TOTALS		79.82(*)	100%	-	30.3	3.26

(*) Total acres may differ in the second decimal compared to the sum of each acreage soil. This is due to a round error because we only show the acres of each soil with two decimal.



A-22813

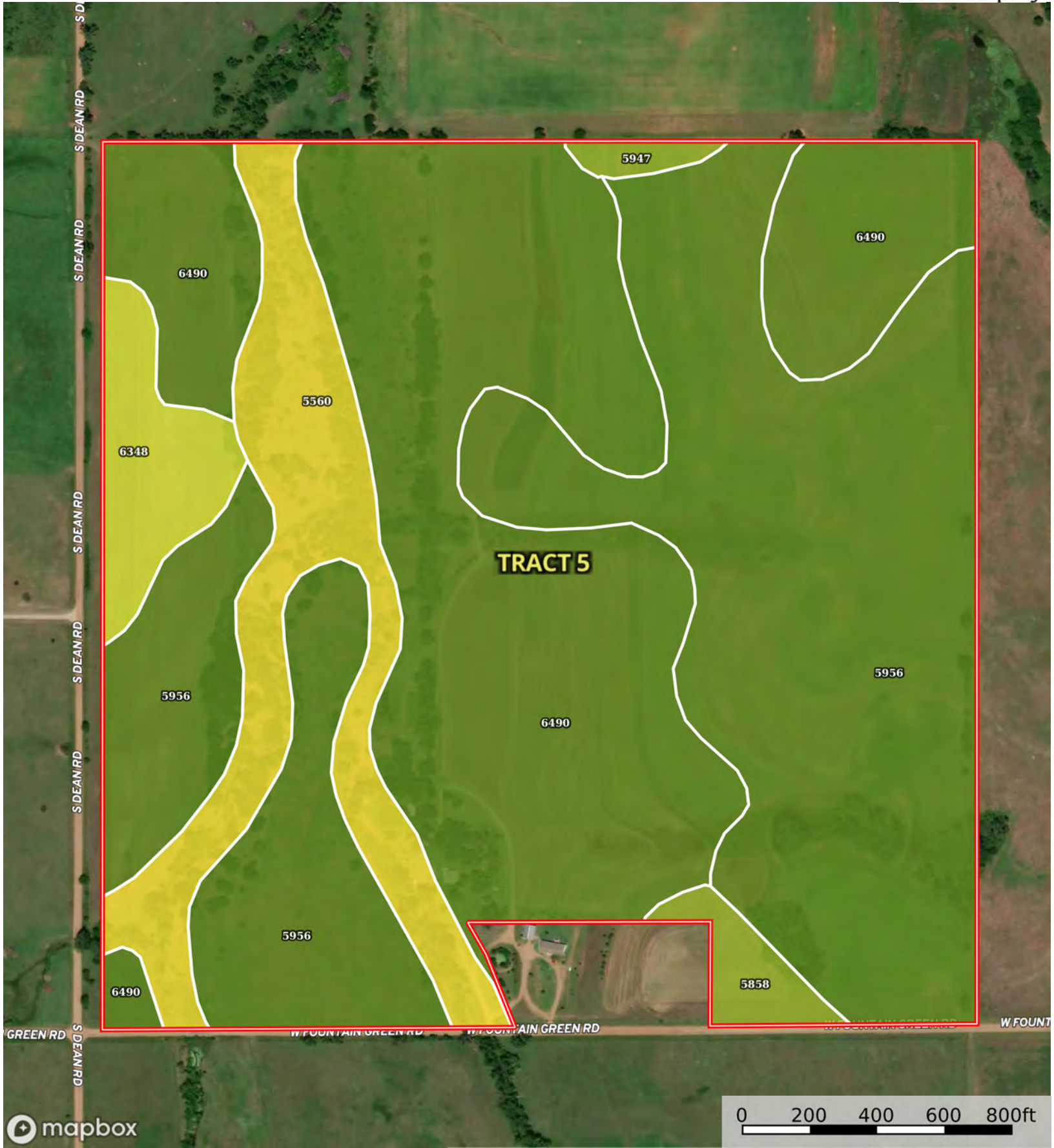
Reno County, Rice County, Kansas, 790.3 AC +/-



Boundary



Boundary



Boundary



| Boundary 152.41 ac

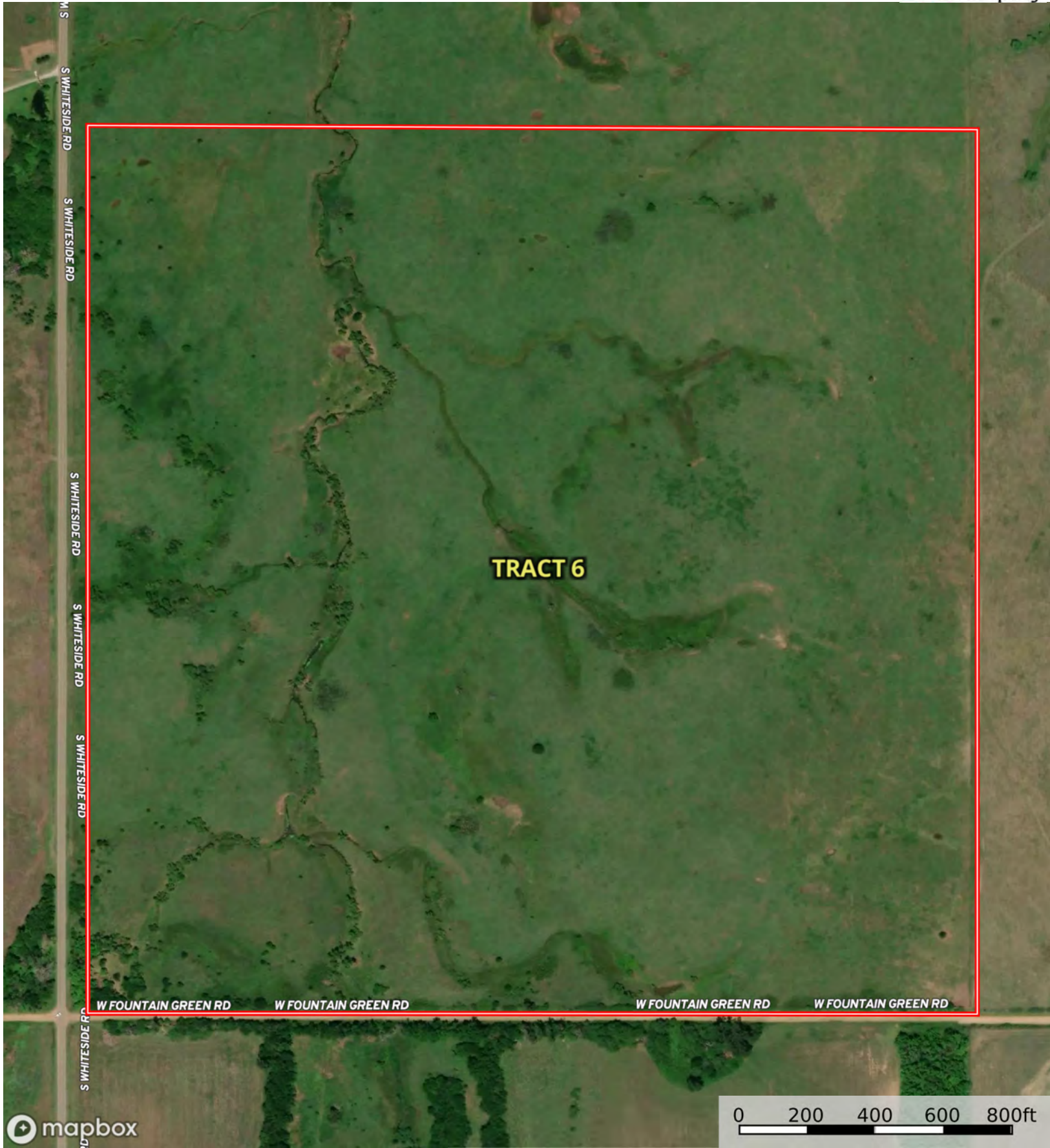
SOIL CODE	SOIL DESCRIPTION	ACRES	%	CPI	NCCPI	CAP
5956	Shellabarger sandy loam, 1 to 3 percent slopes	67.28	44.15	0	53	2e
6490	Zellmont and Poxmash sandy loams, 0 to 3 percent slopes	58.86	38.62	0	47	2e
5560	Kanza-Ninnescah sandy loams, frequently flooded	17.41	11.42	0	31	5w
6348	Jamash-Piedmont clay loams, 1 to 3 percent slopes	5.65	3.71	0	33	4s
5858	Albion-Shellabarger sandy loams, 1 to 3 percent slopes	2.33	1.53	0	45	3e
5947	Shellabarger and Nalim soils, 3 to 6 percent slopes	0.88	0.58	0	56	3e
TOTALS		152.41(*)	100%	-	47.33	2.44

(*) Total acres may differ in the second decimal compared to the sum of each acreage soil. This is due to a round error because we only show the acres of each soil with two decimal.



A-22813

Reno County, Rice County, Kansas, 790.3 AC +/-



Boundary

A-22813

Reno County, Rice County, Kansas, 790.3 AC +/-



Boundary



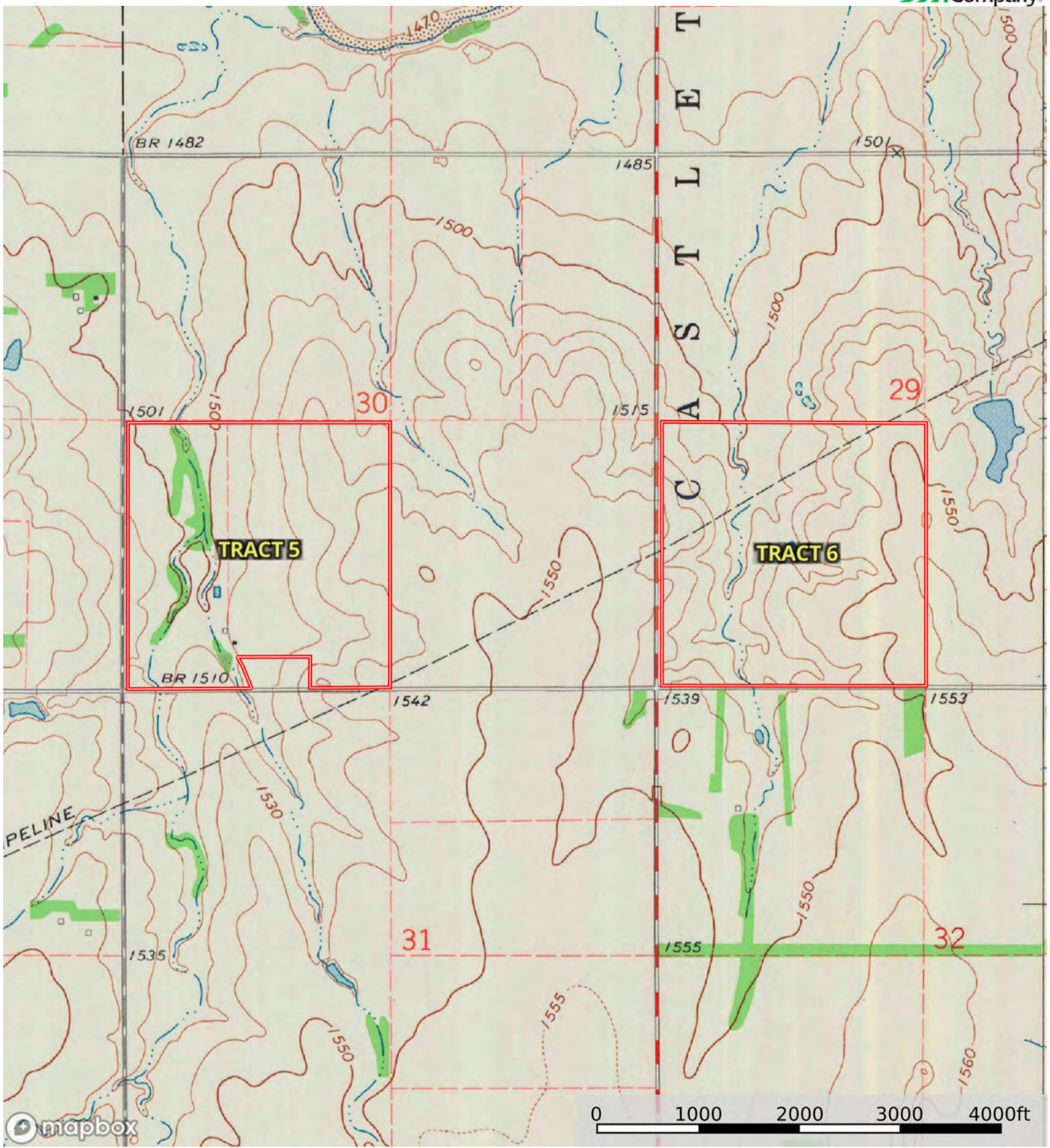
The information contained herein was obtained from sources deemed to be reliable. Land id™ Services makes no warranties or guarantees as to the completeness or accuracy thereof.

| Boundary 156.61 ac

SOIL CODE	SOIL DESCRIPTION	ACRES	%	CPI	NCCPI	CAP
5959	Shellabarger, eroded, and Albion soils, 6 to 15 percent slopes	104.83	66.93	0	42	6e
5560	Kanza-Ninnescah sandy loams, frequently flooded	23.78	15.18	0	31	5w
5956	Shellabarger sandy loam, 1 to 3 percent slopes	23.31	14.88	0	53	2e
6490	Zellmont and Poxmash sandy loams, 0 to 3 percent slopes	4.41	2.82	0	47	2e
5960	Shellabarger-Nalim complex, 1 to 3 percent slopes	0.28	0.18	0	57	2e
TOTALS		156.61(*)	100%	-	42.13	5.13

(*) Total acres may differ in the second decimal compared to the sum of each acreage soil. This is due to a round error because we only show the acres of each soil with two decimal.





Boundary