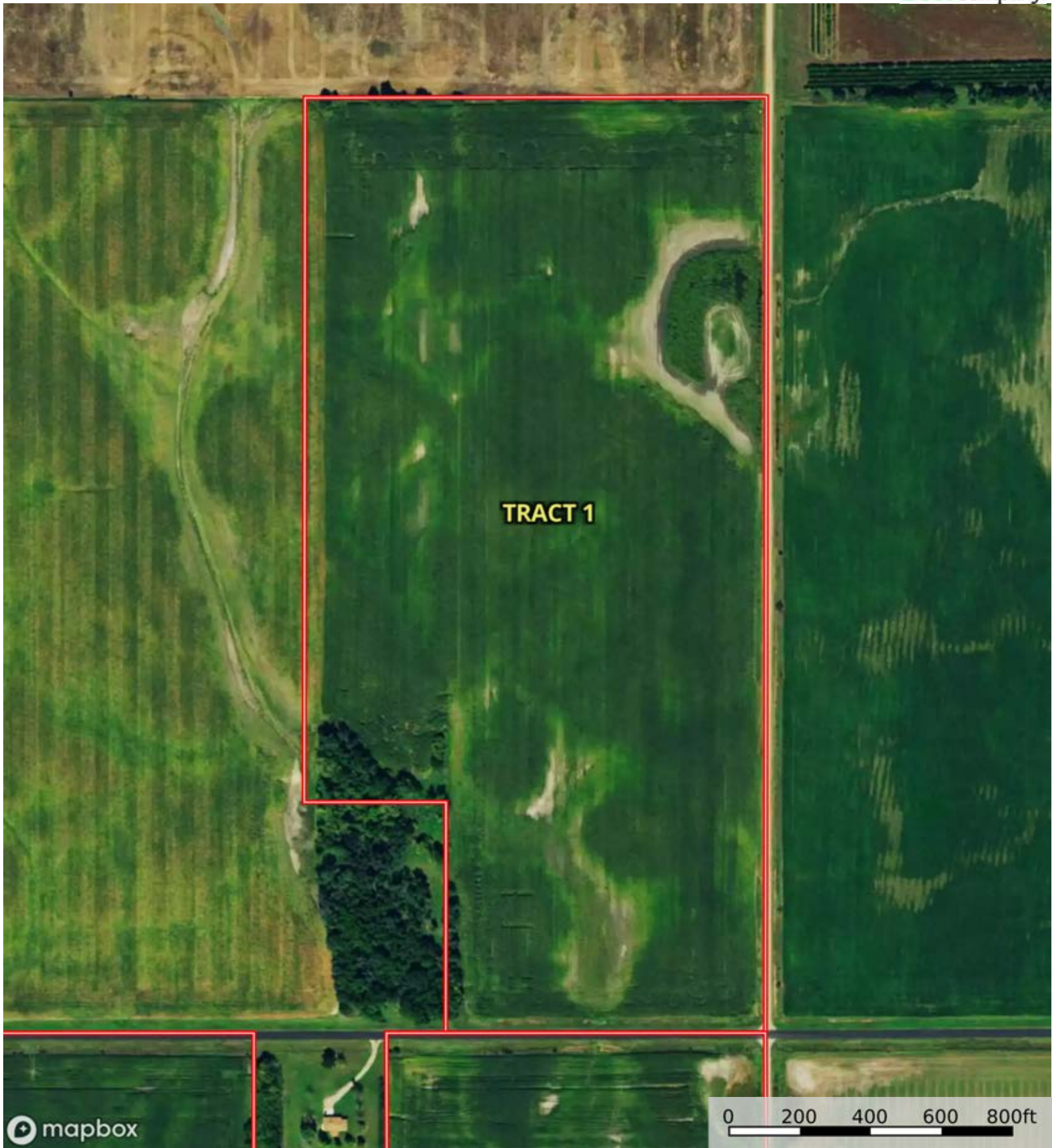

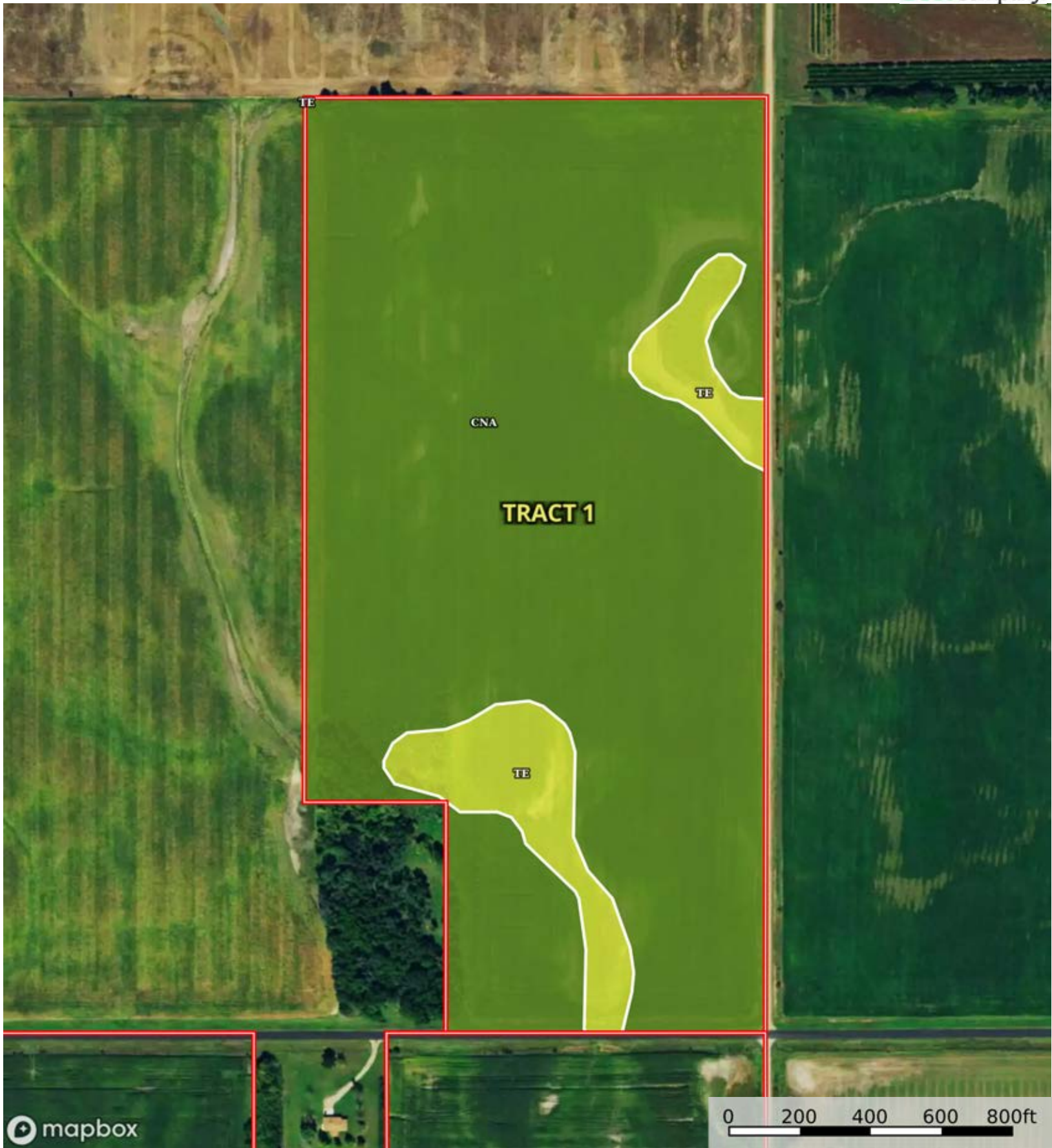

 Boundary



 Boundary

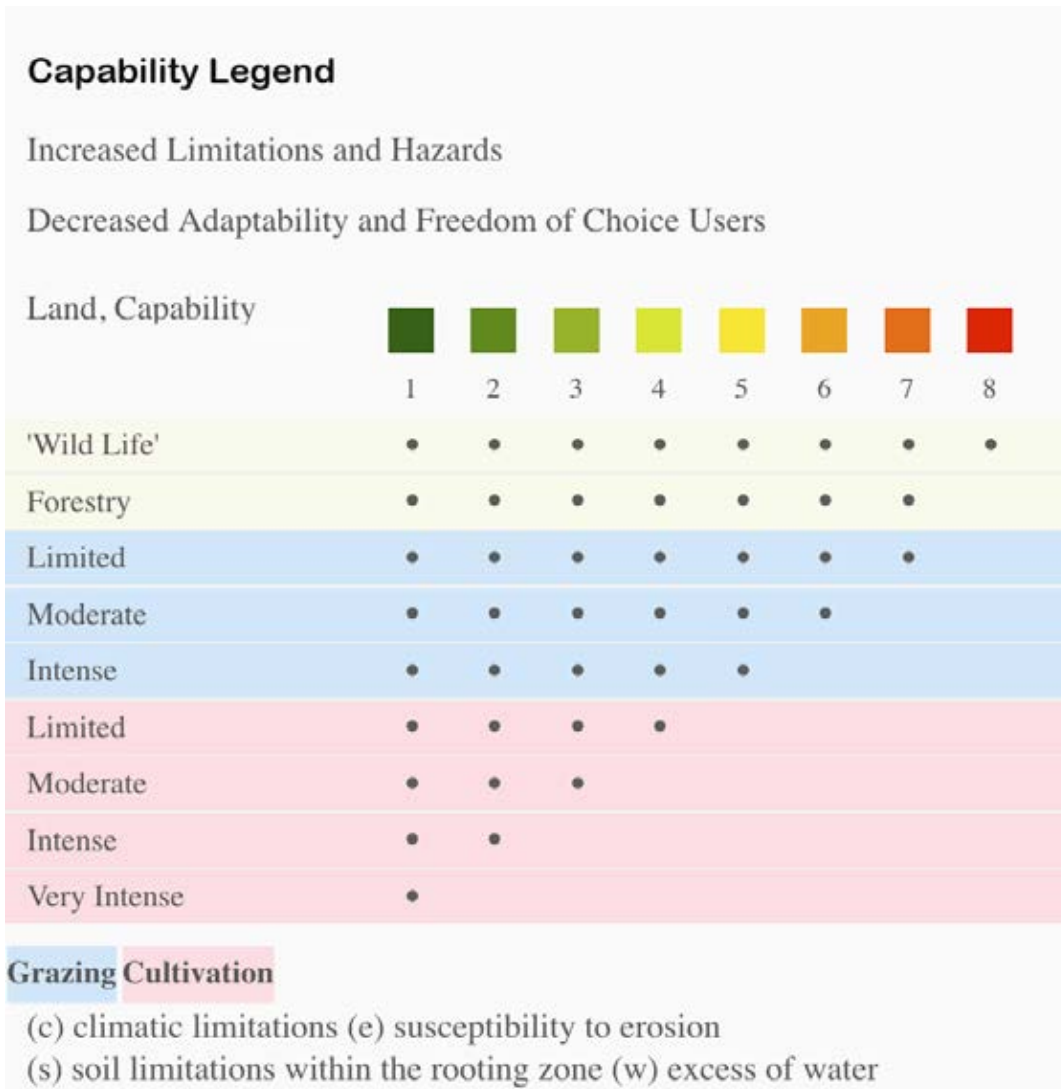


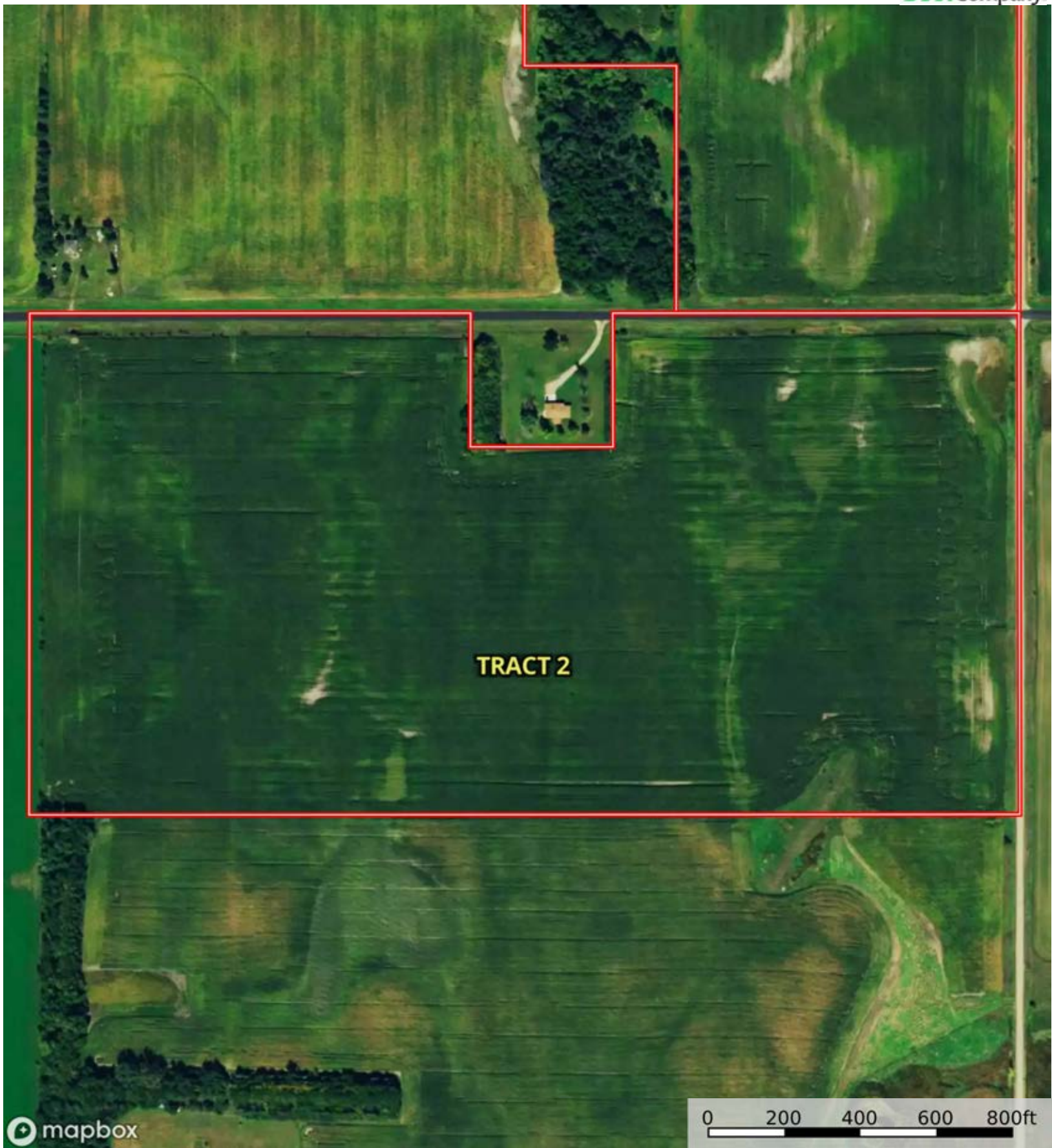
 Boundary

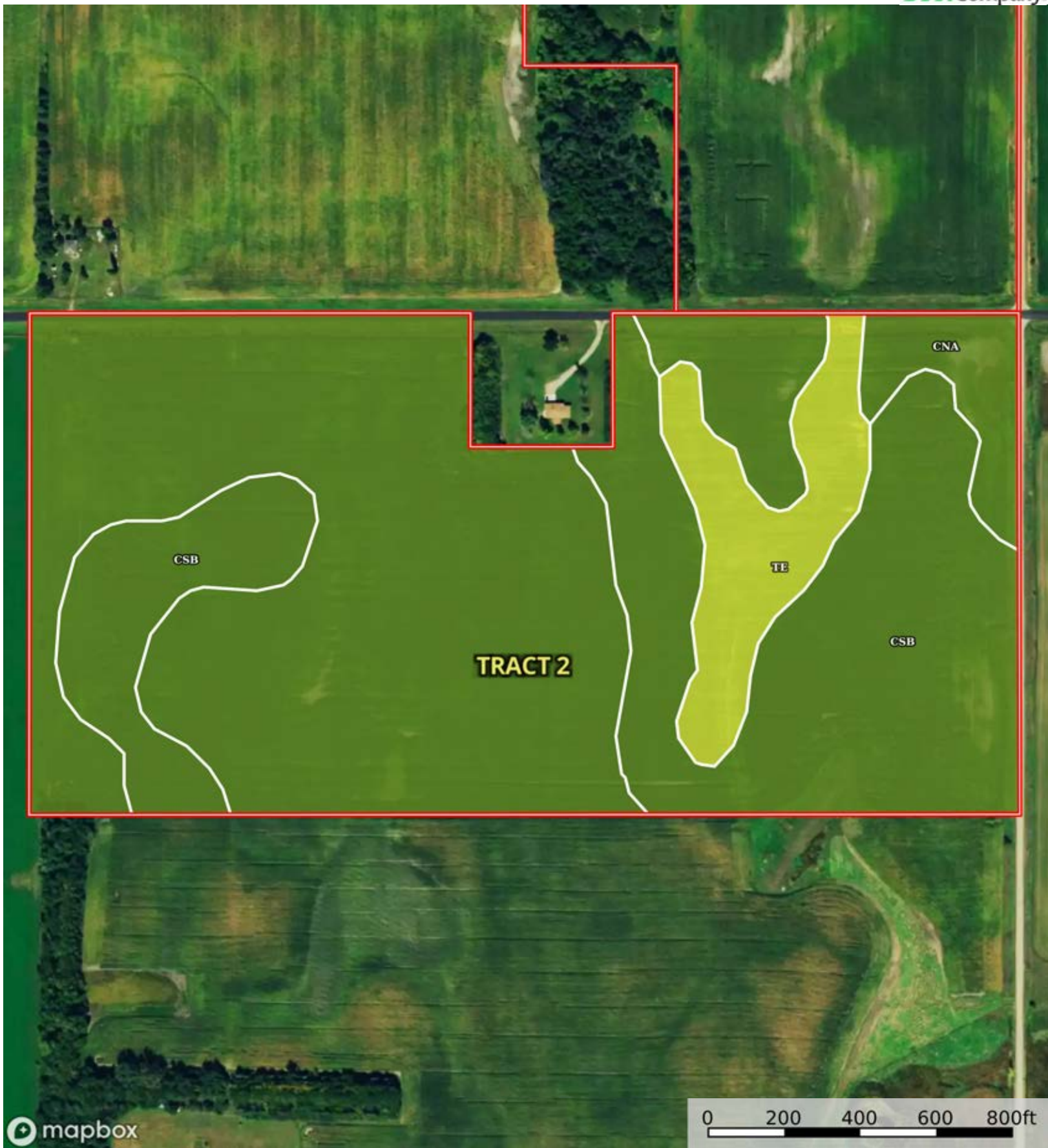
|  Boundary 73.09 ac


| SOIL CODE | SOIL DESCRIPTION | ACRES | % | CPI | NCCPI | CAP |
|-----------|--|----------|-------|-------|-------|------|
| CnA | Clarno-Crossplain-Davison complex, 0 to 2 percent slopes | 66.16 | 90.52 | 83 | 57 | 2c |
| Te | Tetonka silt loam, 0 to 1 percent slopes | 6.93 | 9.48 | 57 | 17 | 4w |
| TOTALS | | 73.09(*) | 100% | 80.53 | 53.21 | 2.19 |

(*) Total acres may differ in the second decimal compared to the sum of each acreage soil. This is due to a round error because we only show the acres of each soil with two decimal.







 Boundary

|  Boundary 76.11 ac

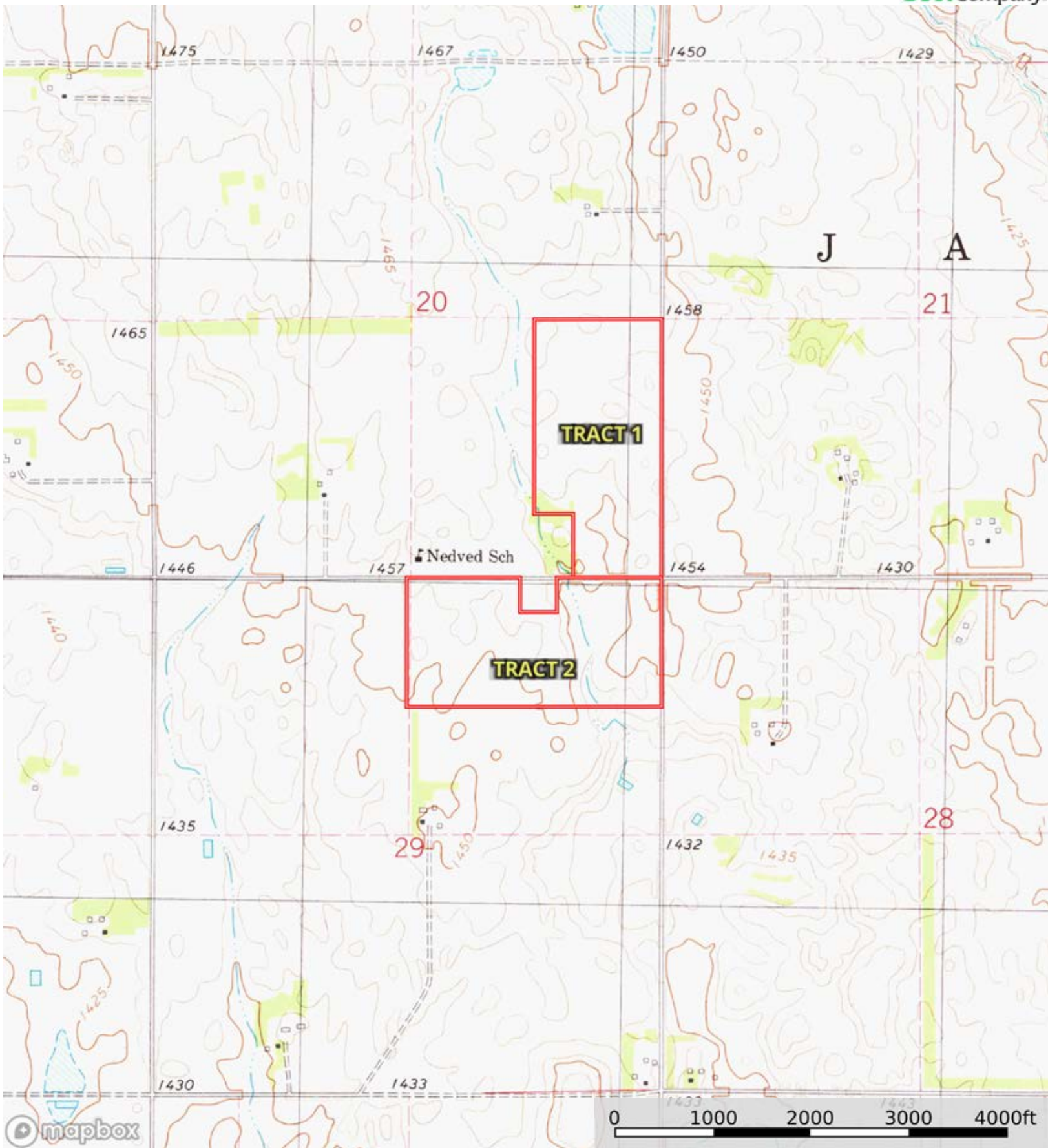
| SOIL CODE | SOIL DESCRIPTION | ACRES | % | CPI | NCCPI | CAP |
|-----------|--|----------|------|-------|-------|------|
| CnA | Clarno-Crossplain-Davison complex, 0 to 2 percent slopes | 43.91 | 57.7 | 83 | 57 | 2c |
| CsB | Clarno-Ethan-Bonilla loams, 1 to 6 percent slopes | 25.72 | 33.8 | 79 | 66 | 2e |
| Te | Tetonka silt loam, 0 to 1 percent slopes | 6.48 | 8.52 | 57 | 17 | 4w |
| TOTALS | | 76.11(*) | 100% | 79.45 | 56.64 | 2.17 |


(*) Total acres may differ in the second decimal compared to the sum of each acreage soil. This is due to a round error because we only show the acres of each soil with two decimal.



A-22828

Bon Homme County, South Dakota, 459 AC +/-



 Boundary

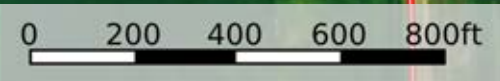


A-22828

Bon Homme County, South Dakota, 459 AC +/-



mapbox



Boundary

|  Boundary 81.14 ac

| SOIL CODE | SOIL DESCRIPTION | ACRES | % | CPI | NCCPI | CAP |
|-----------|---|----------|-------|-------|-------|------|
| CsB | Clarno-Ethan-Bonilla loams, 1 to 6 percent slopes | 41.39 | 51.0 | 79 | 66 | 2e |
| EdA | Delmont-Enet loams, 0 to 2 percent slopes | 12.77 | 15.73 | 51 | 38 | 4s |
| EnC | Clarno-Ethan-Bonilla loams, 2 to 9 percent slopes | 11.93 | 14.7 | 69 | 64 | 3e |
| CmB | Clarno-Bonilla loams, 1 to 6 percent slopes | 11.08 | 13.65 | 85 | 67 | 2e |
| Te | Tetonka silt loam, 0 to 1 percent slopes | 3.97 | 4.89 | 57 | 17 | 4w |
| TOTALS | | 81.14(*) | 100% | 72.85 | 59.02 | 2.56 |

(*) Total acres may differ in the second decimal compared to the sum of each acreage soil. This is due to a round error because we only show the acres of each soil with two decimal.






mapbox

Boundary





 Boundary

|  Boundary 161.33 ac

| SOIL CODE | SOIL DESCRIPTION | ACRES | % | CPI | NCCPI | CAP |
|-----------|---|---------------|-------|------|-------|------|
| CsB | Clarno-Ethan-Bonilla loams, 1 to 6 percent slopes | 61.46 | 38.1 | 79 | 66 | 2e |
| EoD | Ethan-Davis loams, 9 to 15 percent slopes | 29.58 | 18.34 | 43 | 51 | 6e |
| CmA | Clarno-Bonilla loams, 0 to 2 percent slopes | 28.8 | 17.85 | 88 | 68 | 2c |
| Sa | Salmo silty clay loam | 19.03 | 11.8 | 37 | 17 | 4w |
| EnC | Clarno-Ethan-Bonilla loams, 2 to 9 percent slopes | 8.22 | 5.1 | 69 | 64 | 3e |
| Bn | Bon loam, 0 to 2 percent slopes, rarely flooded | 4.51 | 2.8 | 85 | 75 | 2c |
| Br | Bonilla-Crossplain complex | 3.71 | 2.3 | 87 | 48 | 2c |
| EdA | Delmont-Enet loams, 0 to 2 percent slopes | 3.46 | 2.14 | 51 | 38 | 4s |
| CmB | Clarno-Bonilla loams, 1 to 6 percent slopes | 2.01 | 1.25 | 85 | 67 | 2e |
| Te | Tetonka silt loam, 0 to 1 percent slopes | 0.55 | 0.34 | 57 | 17 | 4w |
| TOTALS | | 161.3 3(*) | 100% | 68.3 | 56.81 | 3.07 |









(*) Total acres may differ in the second decimal compared to the sum of each acreage soil. This is due to a round error because we only show the acres of each soil with two decimal.

Capability Legend

Increased Limitations and Hazards

Decreased Adaptability and Freedom of Choice Users

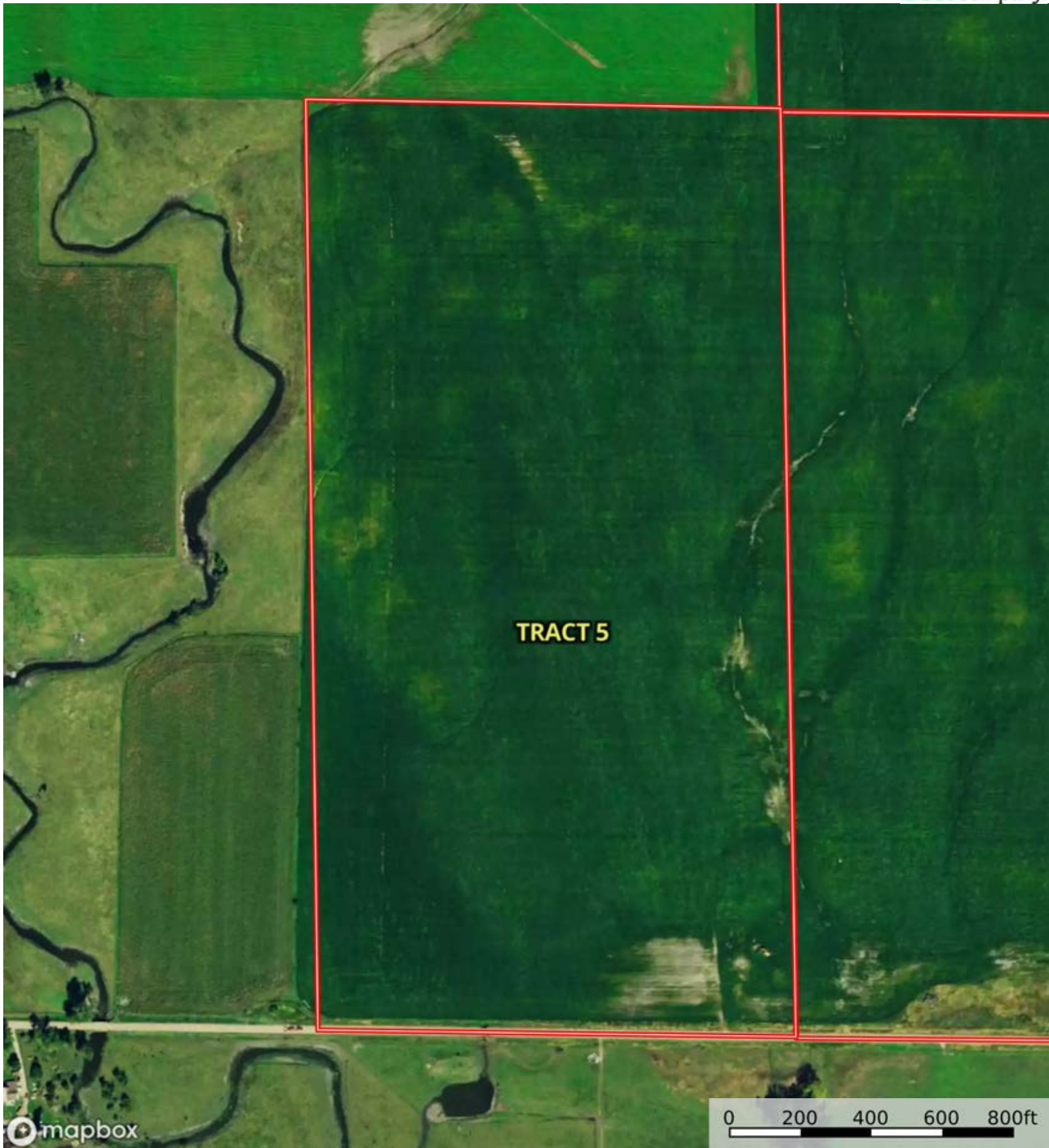
Land, Capability

| |  |  |  |  |  |  |  |  |
|--------------|---|---|---|---|--|---|---|---|
| | 1 | 2 | 3 | 4 | 5 | 6 | 7 | 8 |
| 'Wild Life' | • | • | • | • | • | • | • | • |
| Forestry | • | • | • | • | • | • | • | |
| Limited | • | • | • | • | • | • | • | |
| Moderate | • | • | • | • | • | • | | |
| Intense | • | • | • | • | • | | | |
| Limited | • | • | • | • | | | | |
| Moderate | • | • | • | | | | | |
| Intense | • | • | | | | | | |
| Very Intense | • | | | | | | | |

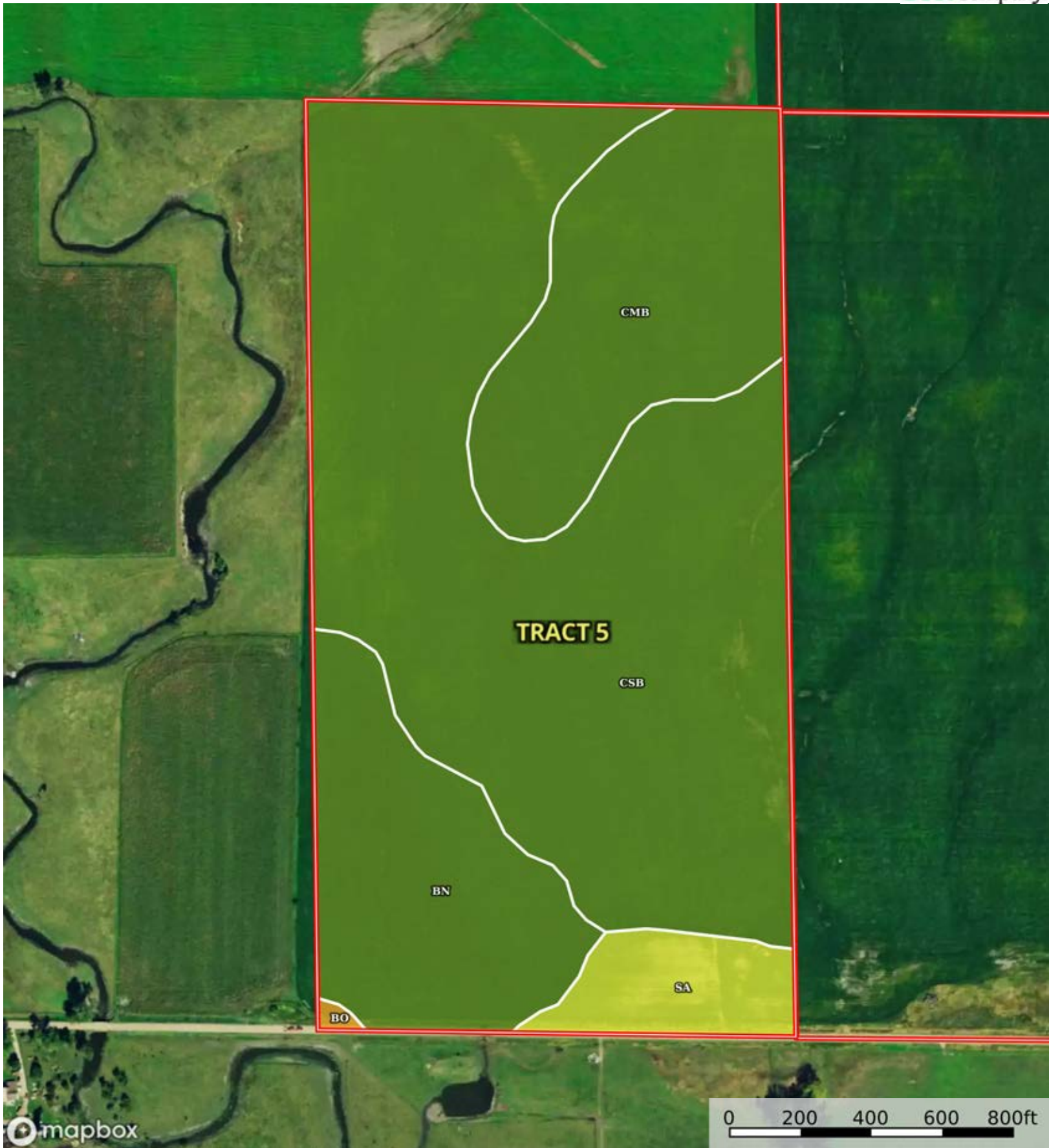
Grazing Cultivation


(c) climatic limitations (e) susceptibility to erosion

(s) soil limitations within the rooting zone (w) excess of water



 Boundary



 Boundary

|  Boundary 81.36 ac

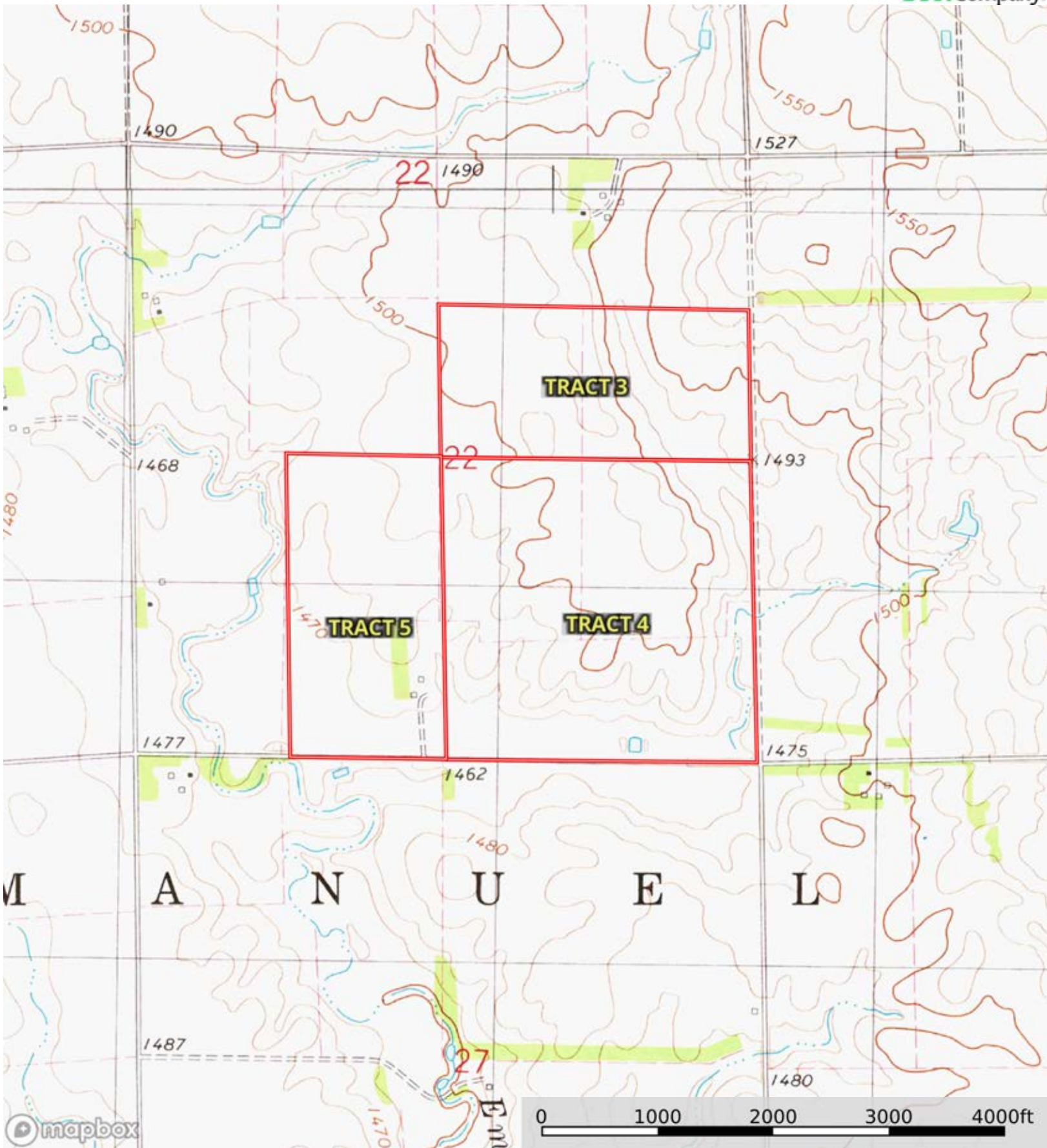
| SOIL CODE | SOIL DESCRIPTION | ACRES | % | CPI | NCCPI | CAP |
|-----------|--|----------|-------|-------|-------|------|
| CsB | Clarno-Ethan-Bonilla loams, 1 to 6 percent slopes | 48.89 | 60.09 | 79 | 66 | 2e |
| CmB | Clarno-Bonilla loams, 1 to 6 percent slopes | 15.26 | 18.76 | 85 | 67 | 2e |
| Bn | Bon loam, 0 to 2 percent slopes, rarely flooded | 12.86 | 15.81 | 85 | 75 | 2c |
| Sa | Salmo silty clay loam | 4.17 | 5.13 | 37 | 17 | 4w |
| Bo | Bon loam, channeled, 0 to 2 percent slopes, frequently flooded | 0.18 | 0.22 | 35 | 36 | 6w |
| TOTALS | | 81.36(*) | 100% | 78.82 | 65.03 | 2.11 |

(*) Total acres may differ in the second decimal compared to the sum of each acreage soil. This is due to a round error because we only show the acres of each soil with two decimal.



A-22828

Bon Homme County, South Dakota, 459 AC +/-



Boundary