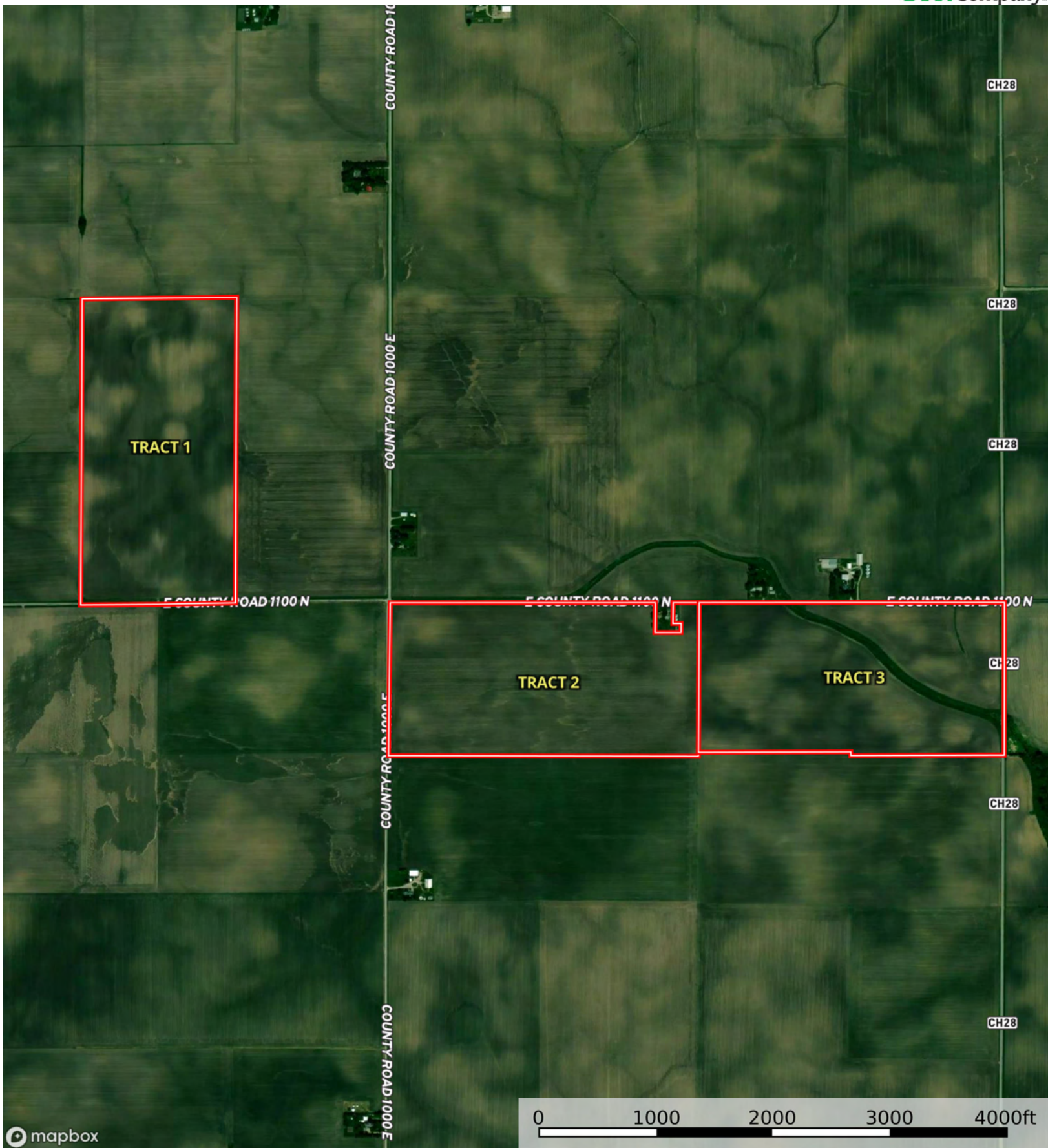
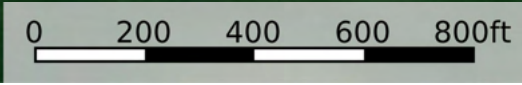
 Boundary



 Boundary





|  Boundary 79.85 ac

SOIL CODE	SOIL DESCRIPTION	ACRES	%	PI	NCCPI	CAP
152A	Drummer silty clay loam, 0 to 2 percent slopes	53.5	66.99	144	83	2w
481A	Raub silt loam, non-densic substratum, 0 to 2 percent slopes	23.11	28.94	134	87	1
56B2	Dana silt loam, 2 to 5 percent slopes, eroded	1.85	2.32	123	78	2e
154A	Flanagan silt loam, 0 to 2 percent slopes	1.39	1.74	144	90	1
TOTALS		79.85(*)	100%	140.6	84.15	1.69

(*) Total acres may differ in the second decimal compared to the sum of each acreage soil. This is due to a round error because we only show the acres of each soil with two decimal.

Capability Legend

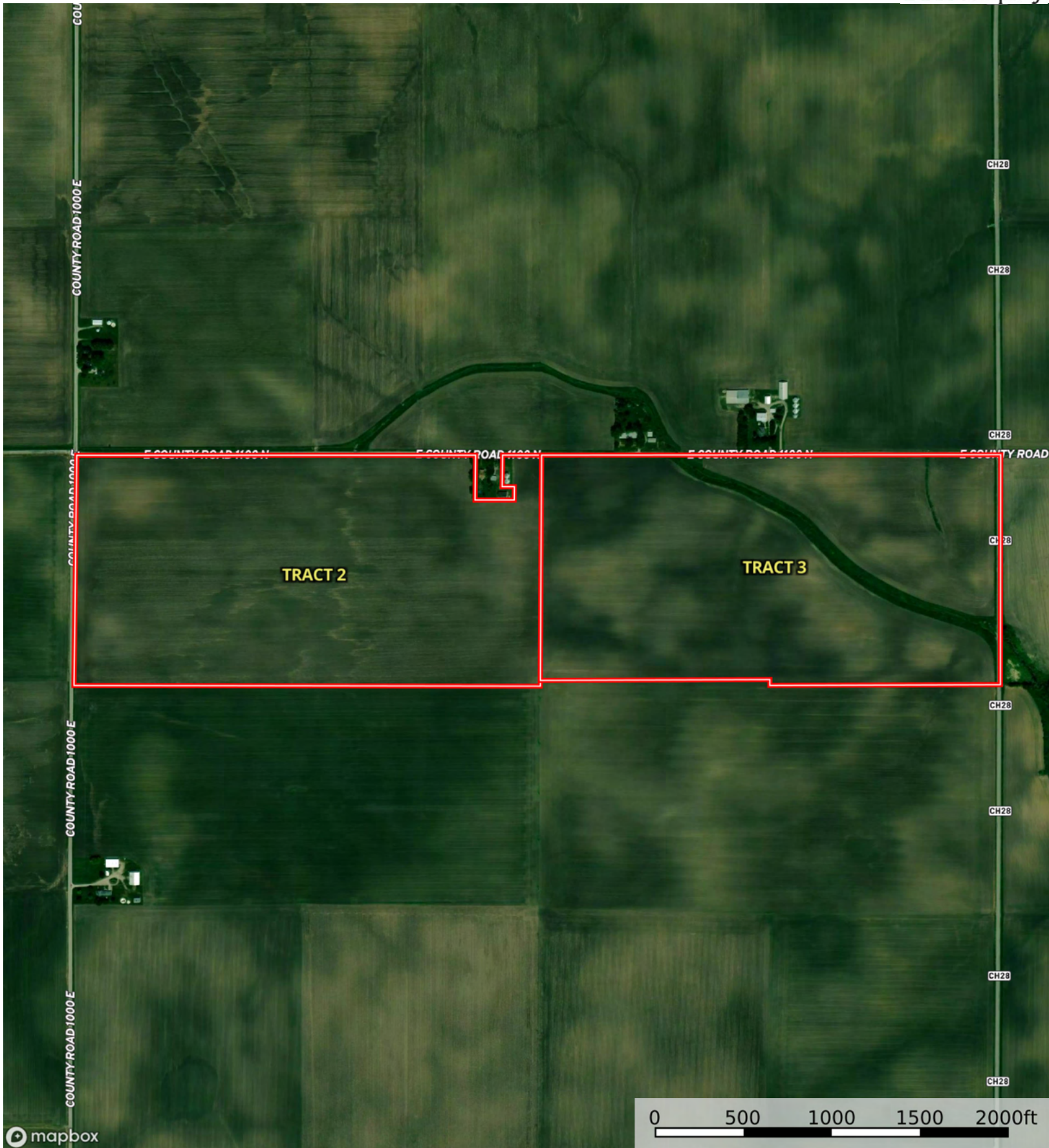
Increased Limitations and Hazards
Decreased Adaptability and Freedom of Choice Users

Land, Capability

	1	2	3	4	5	6	7	8
'Wild Life'	•	•	•	•	•	•	•	•
Forestry	•	•	•	•	•	•	•	
Limited	•	•	•	•	•	•	•	
Moderate	•	•	•	•	•	•		
Intense	•	•	•	•	•			
Limited	•	•	•	•				
Moderate	•	•	•					
Intense	•	•						
Very Intense	•							

Grazing Cultivation

(c) climatic limitations (e) susceptibility to erosion
(s) soil limitations within the rooting zone (w) excess of water



 Boundary



 Boundary

|  Boundary 78.98 ac

SOIL CODE	SOIL DESCRIPTION	ACRES	%	PI	NCCPI	CAP
152A	Drummer silty clay loam, 0 to 2 percent slopes	64.44	81.58	144	83	2w
481A	Raub silt loam, non-densic substratum, 0 to 2 percent slopes	11.5	14.56	134	87	1
56B2	Dana silt loam, 2 to 5 percent slopes, eroded	2.81	3.56	123	78	2e
348B	Wingate silt loam, 2 to 5 percent slopes	0.23	0.29	119	85	2e
TOTALS		78.98(*)	100%	141.7 1	83.4	1.85

(*) Total acres may differ in the second decimal compared to the sum of each acreage soil. This is due to a round error because we only show the acres of each soil with two decimal.





Boundary 77.97 ac

SOIL CODE	SOIL DESCRIPTION	ACRES	%	PI	NCCPI	CAP
152A	Drummer silty clay loam, 0 to 2 percent slopes	38.59	49.5	144	83	2w
481A	Raub silt loam, non-densic substratum, 0 to 2 percent slopes	36.63	46.99	134	87	1
348B	Wingate silt loam, 2 to 5 percent slopes	2.75	3.53	119	85	2e
TOTALS		77.97(*)	100%	138.44	84.96	1.53

(*) Total acres may differ in the second decimal compared to the sum of each acreage soil. This is due to a round error because we only show the acres of each soil with two decimal.



