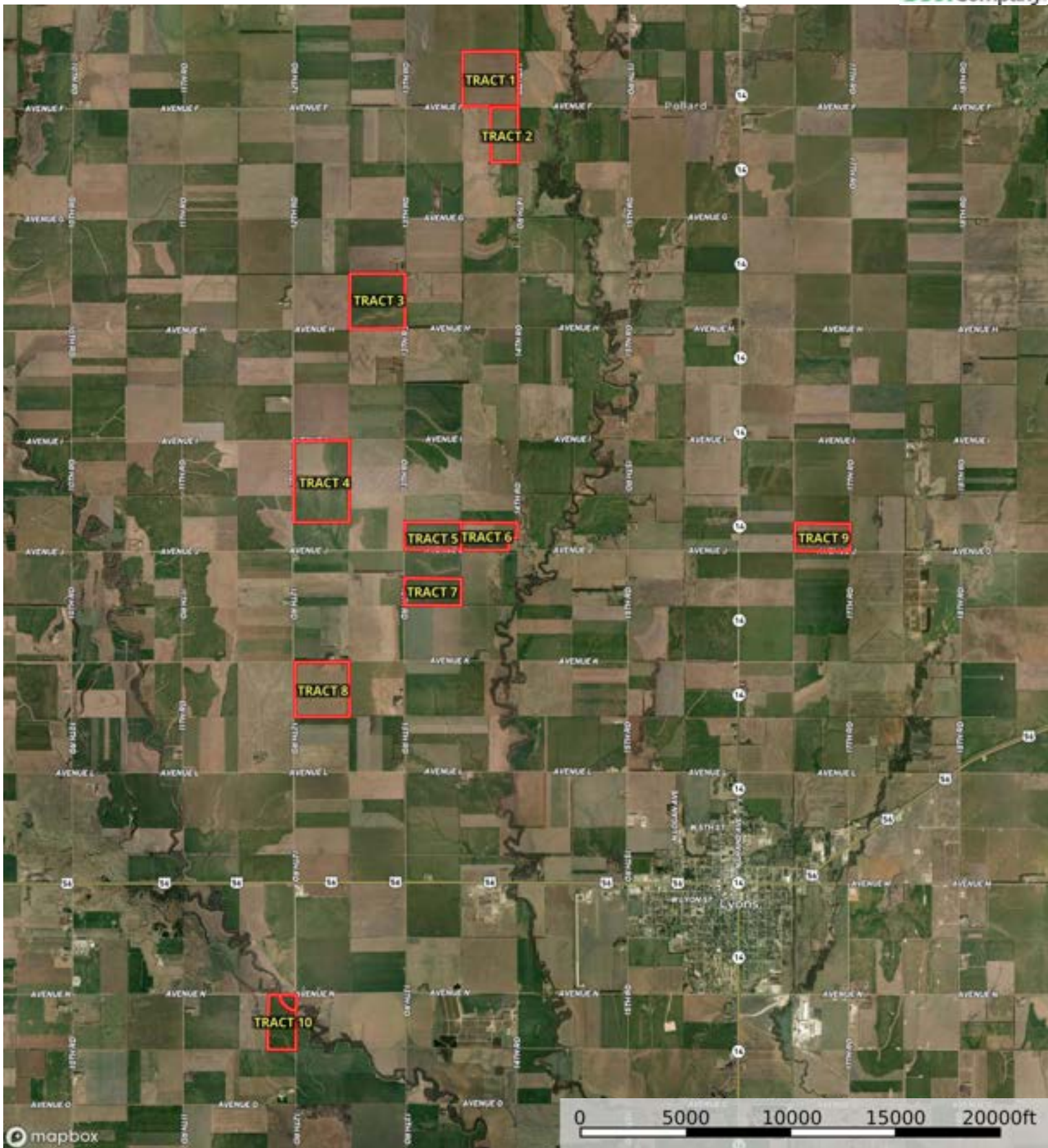



 Boundary




 Boundary



mapbox

Boundary



 Boundary

|  Boundary 157.18 ac

SOIL CODE	SOIL DESCRIPTION	ACRES	%	CPI	NCCPI	CAP
3800	Crete silt loam, 0 to 1 percent slopes, loess plains and breaks	100.29	63.81	0	65	2s
3801	Crete silt loam, 1 to 3 percent slopes, loess plains and breaks	43.46	27.65	0	63	2e
3829	Crete silty clay loam, 1 to 3 percent slopes, eroded	13.43	8.54	0	55	2e
TOTALS		157.18(*)	100%	-	63.6	2.0

(\*) Total acres may differ in the second decimal compared to the sum of each acreage soil. This is due to a round error because we only show the acres of each soil with two decimal.





mapbox

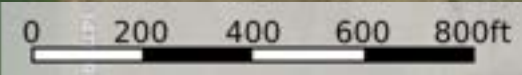
0 200 400 600 800ft

Boundary





mapbox



Boundary

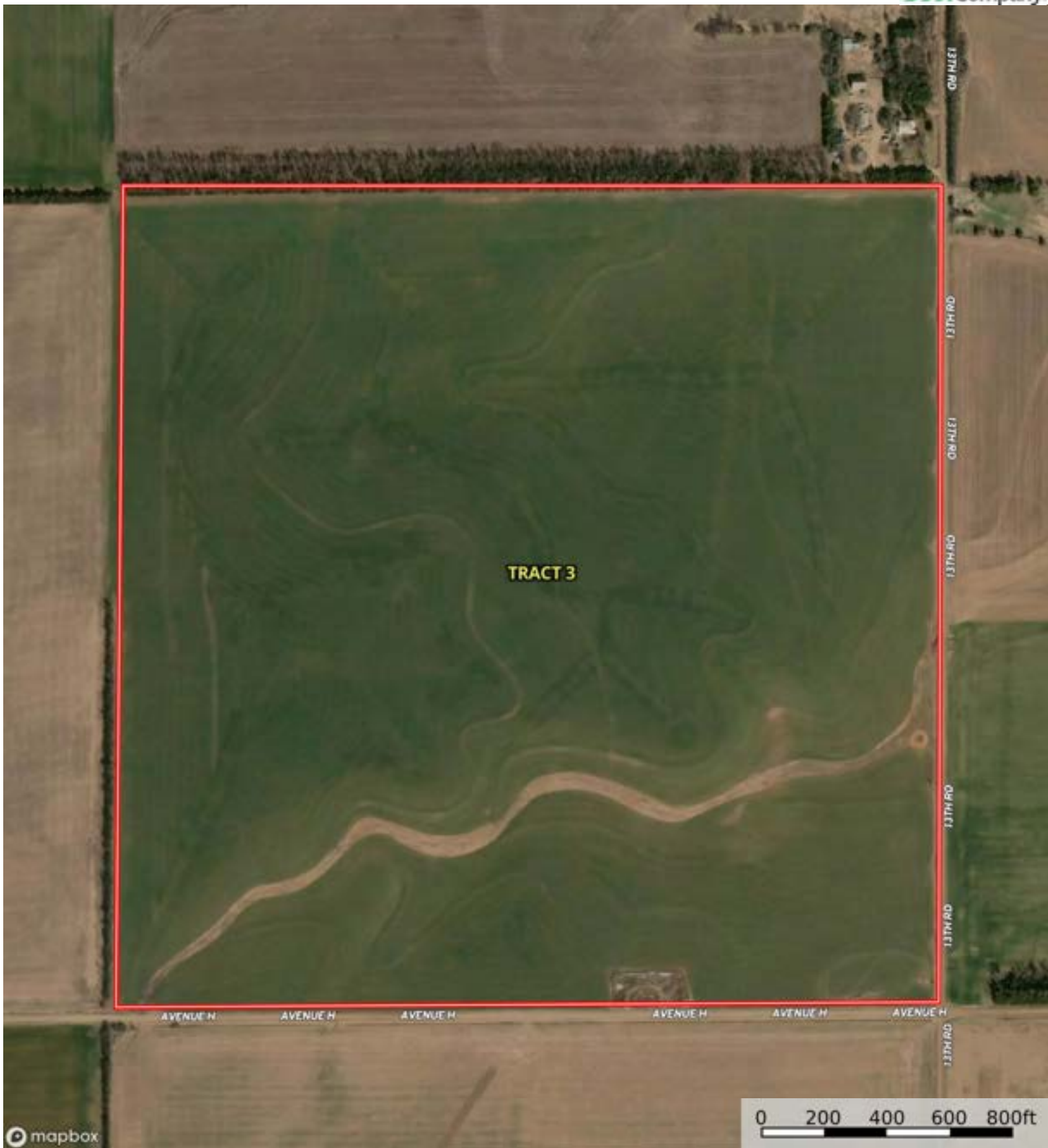
Boundary 77.48 ac

SOIL CODE	SOIL DESCRIPTION	ACRES	%	CPI	NCCPI	CAP
3801	Crete silt loam, 1 to 3 percent slopes, loess plains and breaks	47.45	61.25	0	63	2e
3800	Crete silt loam, 0 to 1 percent slopes, loess plains and breaks	14.39	18.57	0	65	2s
3829	Crete silty clay loam, 1 to 3 percent slopes, eroded	10.64	13.73	0	55	2e
3849	Geary-Clark complex, 3 to 7 percent slopes, eroded	4.31	5.56	0	62	3e
2266	Tobin silt loam, occasionally flooded	0.69	0.89	0	84	2w
TOTALS		77.48(*)	100%	-	62.41	2.06

(\*) Total acres may differ in the second decimal compared to the sum of each acreage soil. This is due to a round error because we only show the acres of each soil with two decimal.

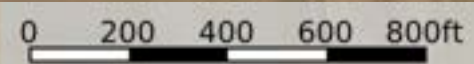








mapbox

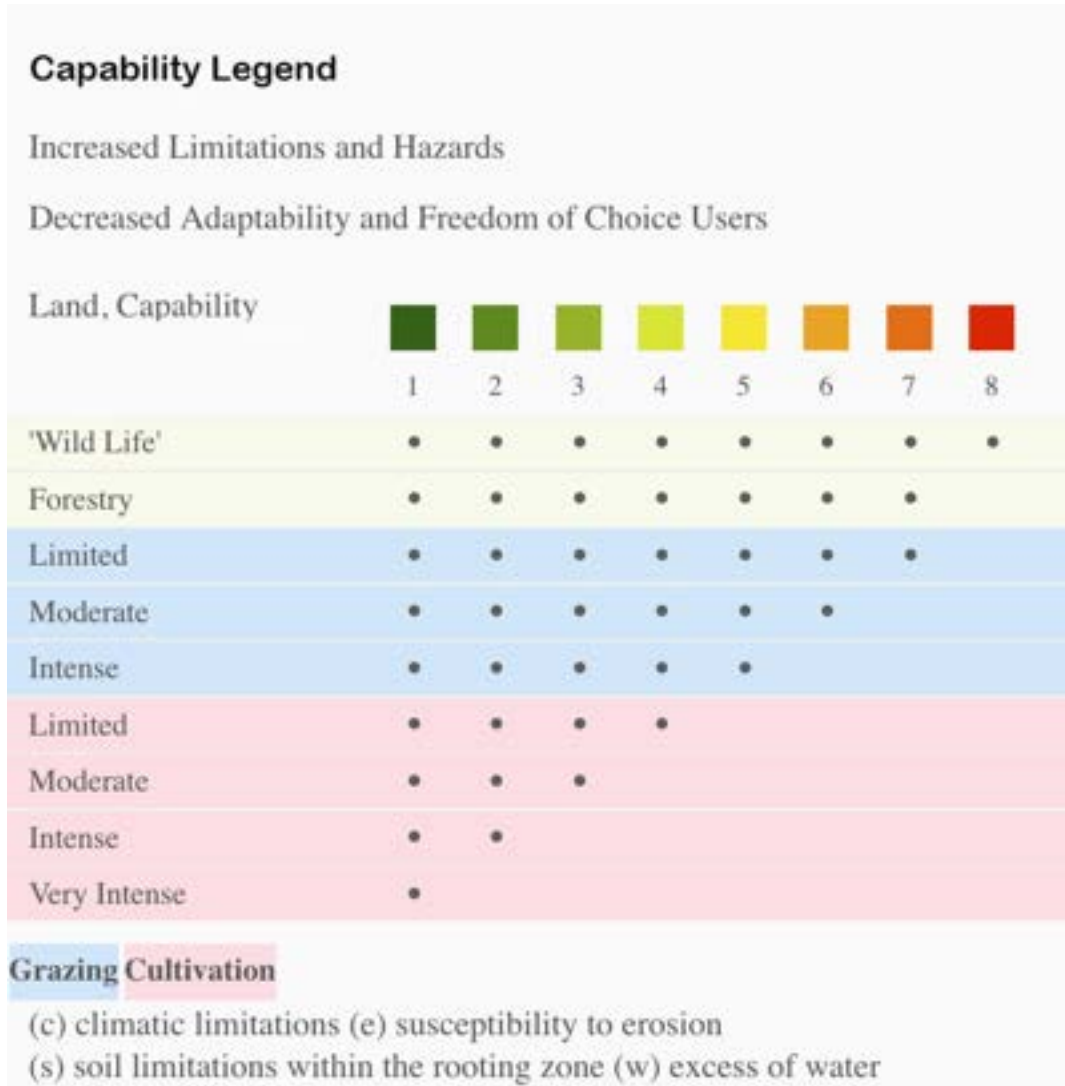


Boundary

Boundary 158.2 ac

SOIL CODE	SOIL DESCRIPTION	ACRES	%	CPI	NCCPI	CAP
3800	Crete silt loam, 0 to 1 percent slopes, loess plains and breaks	95.3	60.24	0	65	2s
3829	Crete silty clay loam, 1 to 3 percent slopes, eroded	47.4	29.96	0	55	2e
3801	Crete silt loam, 1 to 3 percent slopes, loess plains and breaks	15.5	9.8	0	63	2e
TOTALS		158.2(*)	100%	-	61.8	2.0

(\*) Total acres may differ in the second decimal compared to the sum of each acreage soil. This is due to a round error because we only show the acres of each soil with two decimal.





 Boundary



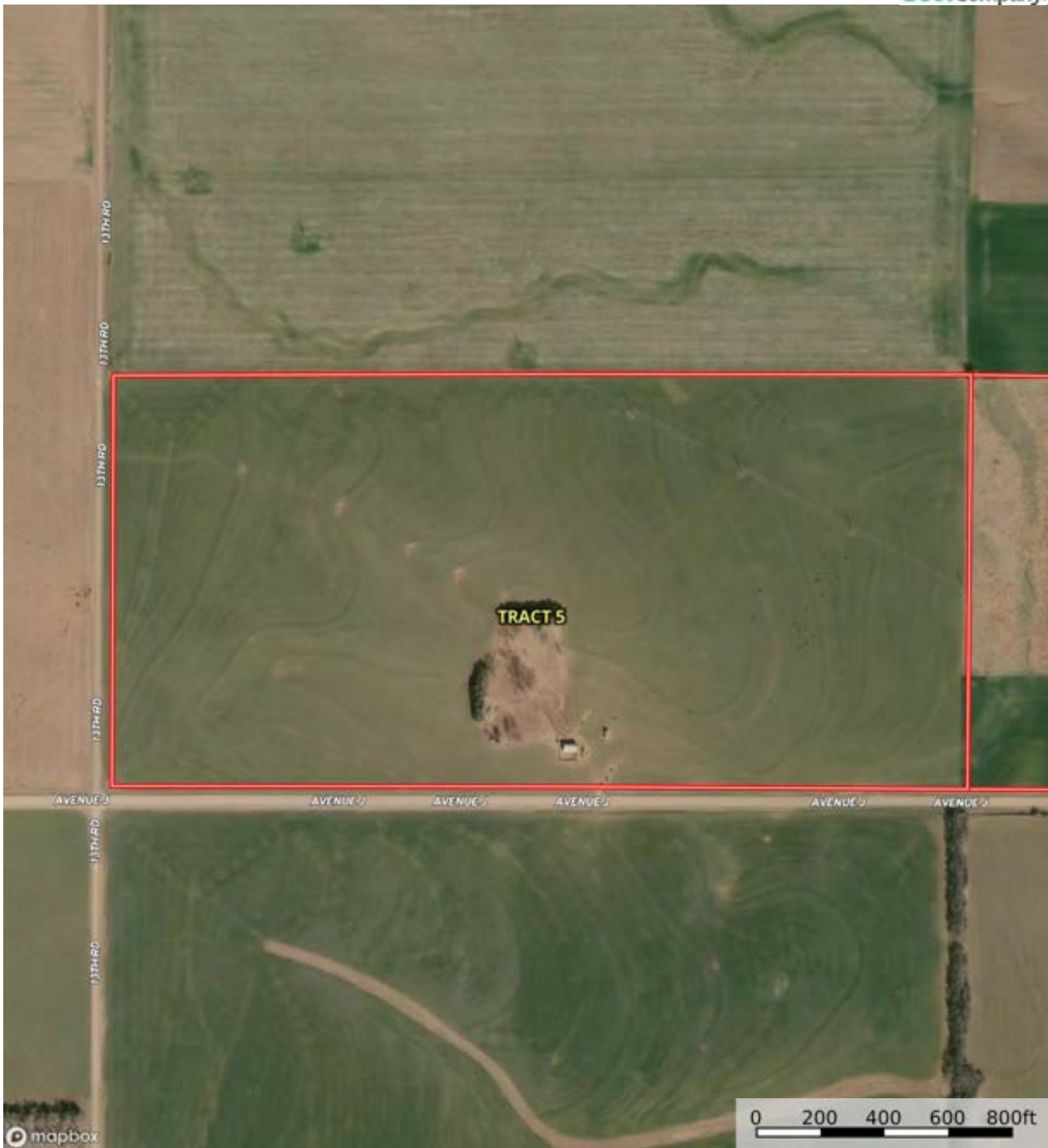
 Boundary


Boundary 235.2 ac

SOIL CODE	SOIL DESCRIPTION	ACRES	%	CPI	NCCPI	CAP
3849	Geary-Clark complex, 3 to 7 percent slopes, eroded	87.99	37.41	0	62	3e
3800	Crete silt loam, 0 to 1 percent slopes, loess plains and breaks	48.58	20.65	0	65	2s
3801	Crete silt loam, 1 to 3 percent slopes, loess plains and breaks	47.07	20.01	0	63	2e
3829	Crete silty clay loam, 1 to 3 percent slopes, eroded	29.37	12.49	0	55	2e
3843	Geary silt loam, 1 to 3 percent slopes	22.19	9.43	0	74	2e
TOTALS		235.2(*)	100%	-	63.07	2.37

(\*) Total acres may differ in the second decimal compared to the sum of each acreage soil. This is due to a round error because we only show the acres of each soil with two decimal.





 Boundary



mapbox

Boundary




|  Boundary 80.35 ac

SOIL CODE	SOIL DESCRIPTION	ACRES	%	CPI	NCCPI	CAP
3801	Crete silt loam, 1 to 3 percent slopes, loess plains and breaks	55.35	68.89	0	63	2e
3800	Crete silt loam, 0 to 1 percent slopes, loess plains and breaks	14.41	17.94	0	65	2s
3849	Geary-Clark complex, 3 to 7 percent slopes, eroded	6.51	8.1	0	62	3e
3843	Geary silt loam, 1 to 3 percent slopes	3.45	4.29	0	74	2e
3829	Crete silty clay loam, 1 to 3 percent slopes, eroded	0.63	0.78	0	55	2e
TOTALS		80.35(*)	100%	-	63.7	2.08


(\*) Total acres may differ in the second decimal compared to the sum of each acreage soil. This is due to a round error because we only show the acres of each soil with two decimal.





 Boundary



 Boundary

|  Boundary 73.22 ac

SOIL CODE	SOIL DESCRIPTION	ACRES	%	CPI	NCCPI	CAP
3843	Geary silt loam, 1 to 3 percent slopes	35.44	48.41	0	74	2e
3801	Crete silt loam, 1 to 3 percent slopes, loess plains and breaks	14.8	20.22	0	63	2e
3561	Hobbs silt loam, occasionally flooded	11.65	15.91	0	82	2w
3800	Crete silt loam, 0 to 1 percent slopes, loess plains and breaks	10.93	14.93	0	65	2s
3849	Geary-Clark complex, 3 to 7 percent slopes, eroded	0.4	0.55	0	62	3e
TOTALS		73.22(*)	100%	-	71.65	2.01

(\*) Total acres may differ in the second decimal compared to the sum of each acreage soil. This is due to a round error because we only show the acres of each soil with two decimal.







 Boundary


Boundary 79.43 ac

SOIL CODE	SOIL DESCRIPTION	ACRES	%	CPI	NCCPI	CAP
3800	Crete silt loam, 0 to 1 percent slopes, loess plains and breaks	36.53	45.99	0	65	2s
3801	Crete silt loam, 1 to 3 percent slopes, loess plains and breaks	24.31	30.61	0	63	2e
3829	Crete silty clay loam, 1 to 3 percent slopes, eroded	8.18	10.3	0	55	2e
3849	Geary-Clark complex, 3 to 7 percent slopes, eroded	7.32	9.22	0	62	3e
3843	Geary silt loam, 1 to 3 percent slopes	3.09	3.89	0	74	2e
TOTALS		79.43(*)	100%	-	63.43	2.09

(\*) Total acres may differ in the second decimal compared to the sum of each acreage soil. This is due to a round error because we only show the acres of each soil with two decimal.





 Boundary





 Boundary

Boundary 155.62 ac

SOIL CODE	SOIL DESCRIPTION	ACRES	%	CPI	NCCPI	CAP
3801	Crete silt loam, 1 to 3 percent slopes, loess plains and breaks	69.82	44.87	0	63	2e
3843	Geary silt loam, 1 to 3 percent slopes	40.94	26.31	0	74	2e
3921	Smolan silty clay loam, 1 to 3 percent slopes	34.82	22.38	0	65	2e
3849	Geary-Clark complex, 3 to 7 percent slopes, eroded	10.04	6.45	0	62	3e
TOTALS		155.62(*)	100%	-	66.28	2.06

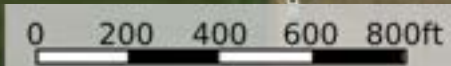
(\*) Total acres may differ in the second decimal compared to the sum of each acreage soil. This is due to a round error because we only show the acres of each soil with two decimal.





mapbox

Boundary





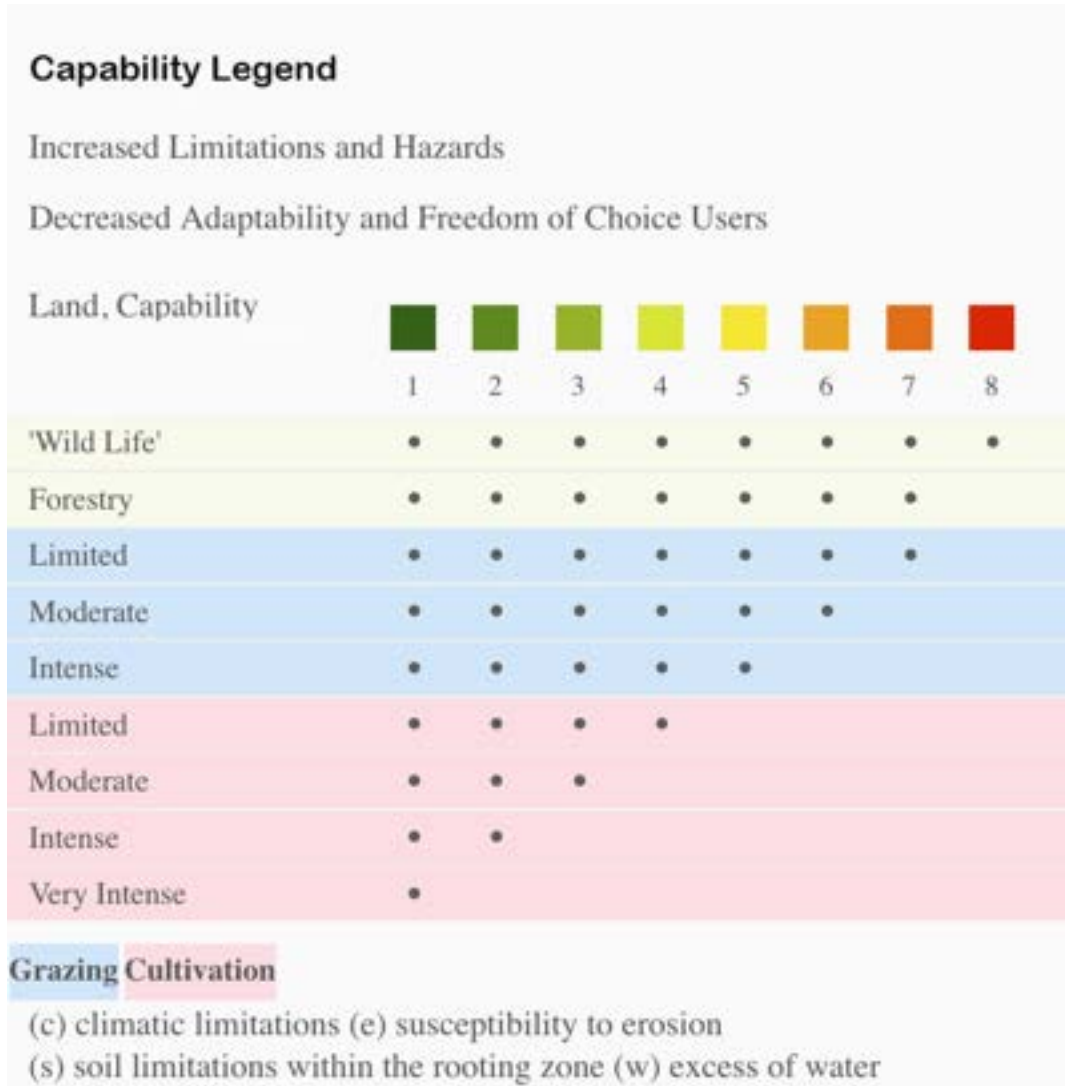
mapbox

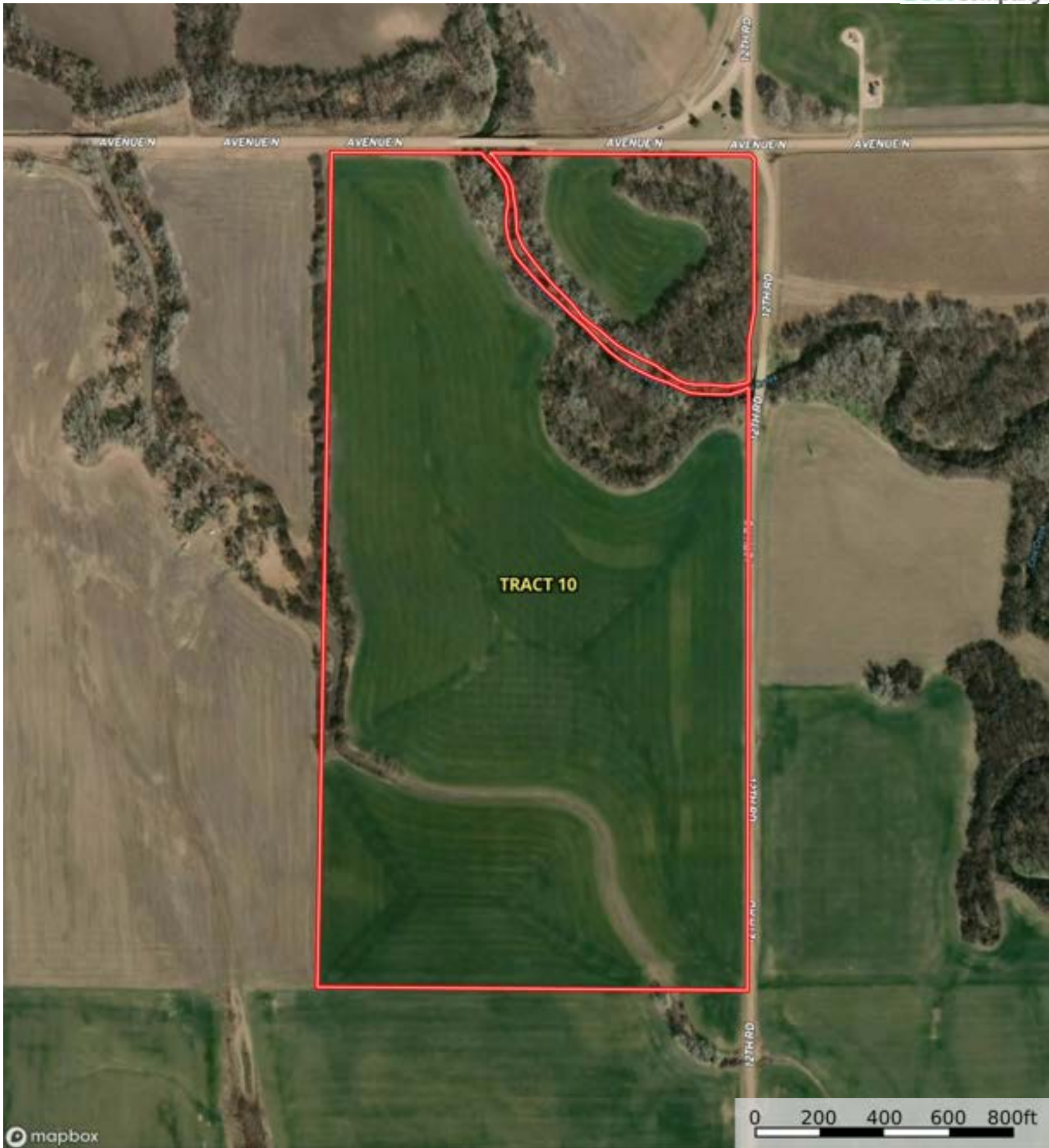
Boundary

Boundary 78.74 ac

SOIL CODE	SOIL DESCRIPTION	ACRES	%	CPI	NCCPI	CAP
3800	Crete silt loam, 0 to 1 percent slopes, loess plains and breaks	56.91	72.28	0	65	2s
3801	Crete silt loam, 1 to 3 percent slopes, loess plains and breaks	19.45	24.7	0	63	2e
5970	Taver loam, 0 to 1 percent slopes	2.38	3.02	0	56	2s
TOTALS		78.74(*)	100%	-	64.23	2.0

(\*) Total acres may differ in the second decimal compared to the sum of each acreage soil. This is due to a round error because we only show the acres of each soil with two decimal.





Boundary



Boundary

|  All Polygons 78.0 ac

SOIL CODE	SOIL DESCRIPTION	ACRES	%	CPI	NCCPI	CAP
2266	Tobin silt loam, occasionally flooded	51.19	65.64	0	84	2w
5961	Solvay loamy fine sand, 0 to 2 percent slopes	11.2	14.36	0	50	2e
5970	Taver loam, 0 to 1 percent slopes	10.02	12.85	0	56	2s
5730	Darlow-Elmer complex, 0 to 2 percent slopes	5.59	7.17	0	41	4s
TOTALS		78.0(*)	100%	-	72.45	2.14

(\*) Total acres may differ in the second decimal compared to the sum of each acreage soil. This is due to a round error because we only show the acres of each soil with two decimal.

|  Boundary 9.94 ac

SOIL CODE	SOIL DESCRIPTION	ACRES	%	CPI	NCCPI	CAP
2266	Tobin silt loam, occasionally flooded	7.66	77.06	0	84	2w
5970	Taver loam, 0 to 1 percent slopes	2.28	22.94	0	56	2s
TOTALS		9.94(*)	100%	-	77.58	2.0

(\*) Total acres may differ in the second decimal compared to the sum of each acreage soil. This is due to a round error because we only show the acres of each soil with two decimal.

|  Boundary 68.06 ac

SOIL CODE	SOIL DESCRIPTION	ACRES	%	CPI	NCCPI	CAP
2266	Tobin silt loam, occasionally flooded	43.53	63.97	0	84	2w
5961	Solvay loamy fine sand, 0 to 2 percent slopes	11.2	16.46	0	50	2e
5970	Taver loam, 0 to 1 percent slopes	7.74	11.37	0	56	2s
5730	Darlow-Elmer complex, 0 to 2 percent slopes	5.59	8.21	0	41	4s
TOTALS		68.06(*)	100%	-	71.7	2.16

(\*) Total acres may differ in the second decimal compared to the sum of each acreage soil. This is due to a round error because we only show the acres of each soil with two decimal.









## Capability Legend

Increased Limitations and Hazards

Decreased Adaptability and Freedom of Choice Users

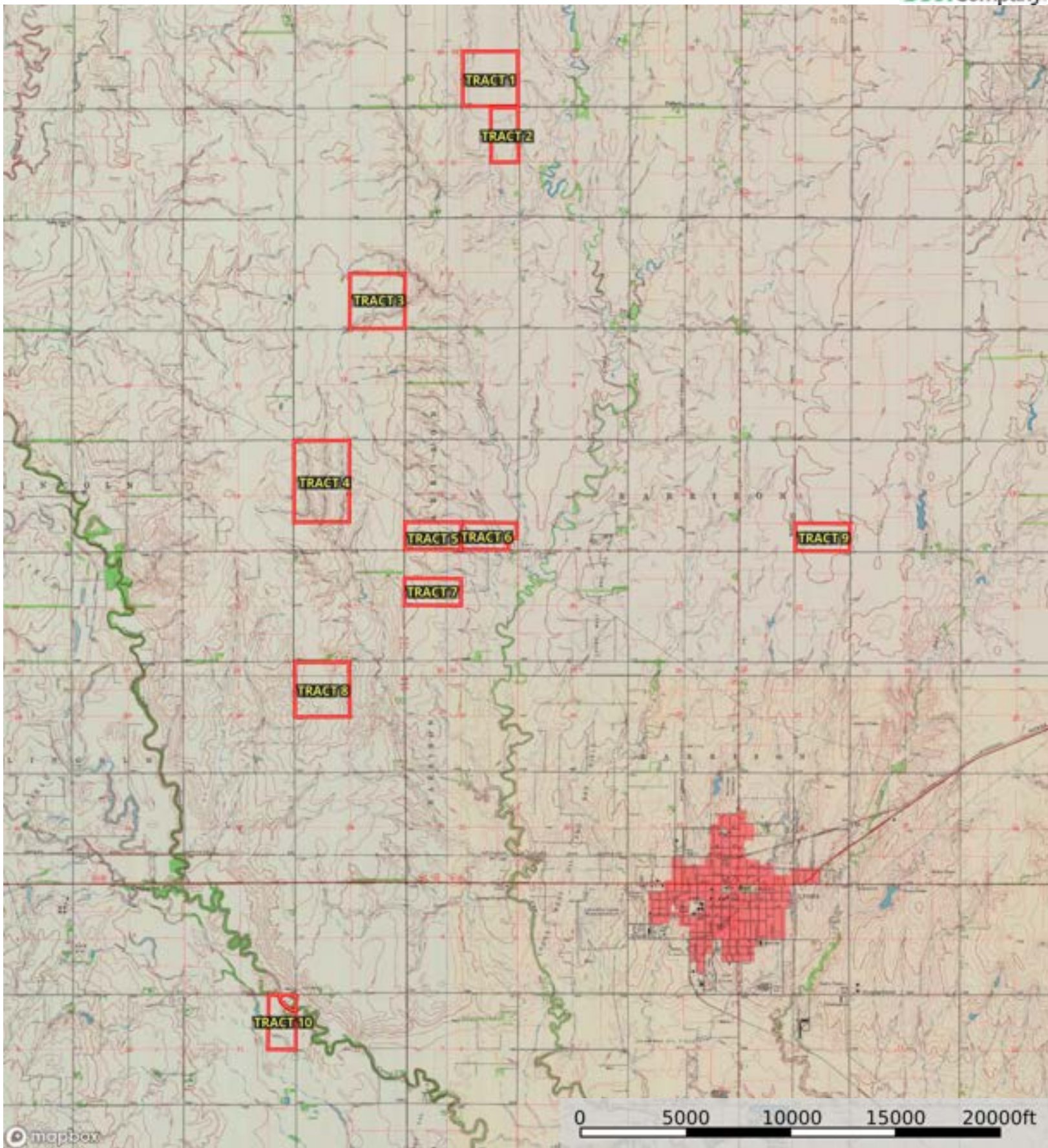
Land, Capability

								
	1	2	3	4	5	6	7	8
'Wild Life'	•	•	•	•	•	•	•	•
Forestry	•	•	•	•	•	•	•	
Limited	•	•	•	•	•	•	•	
Moderate	•	•	•	•	•	•		
Intense	•	•	•	•	•			
Limited	•	•	•	•				
Moderate	•	•	•					
Intense	•	•						
Very Intense	•							

### Grazing Cultivation

(c) climatic limitations (e) susceptibility to erosion

(s) soil limitations within the rooting zone (w) excess of water



 Boundary