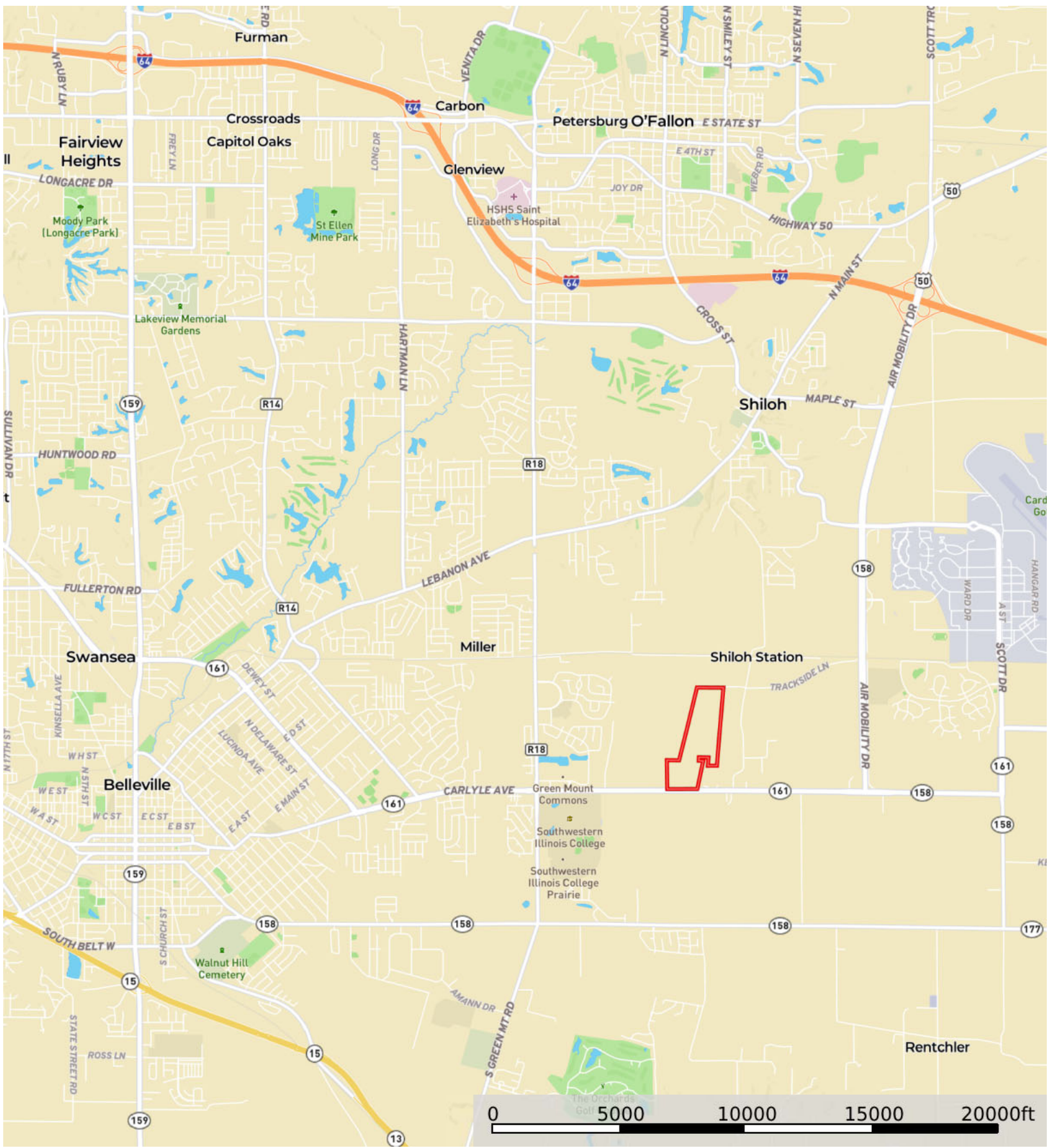
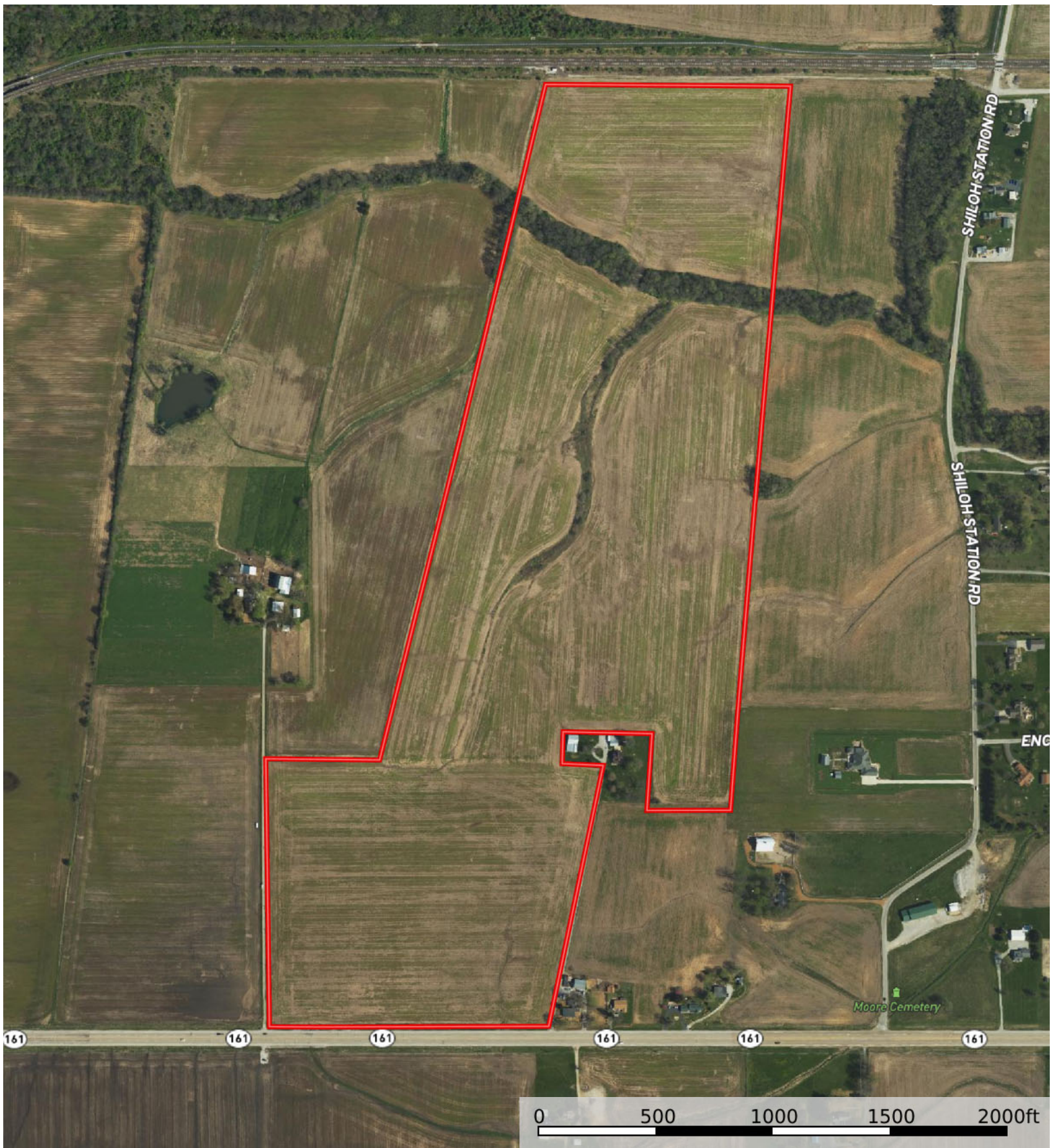



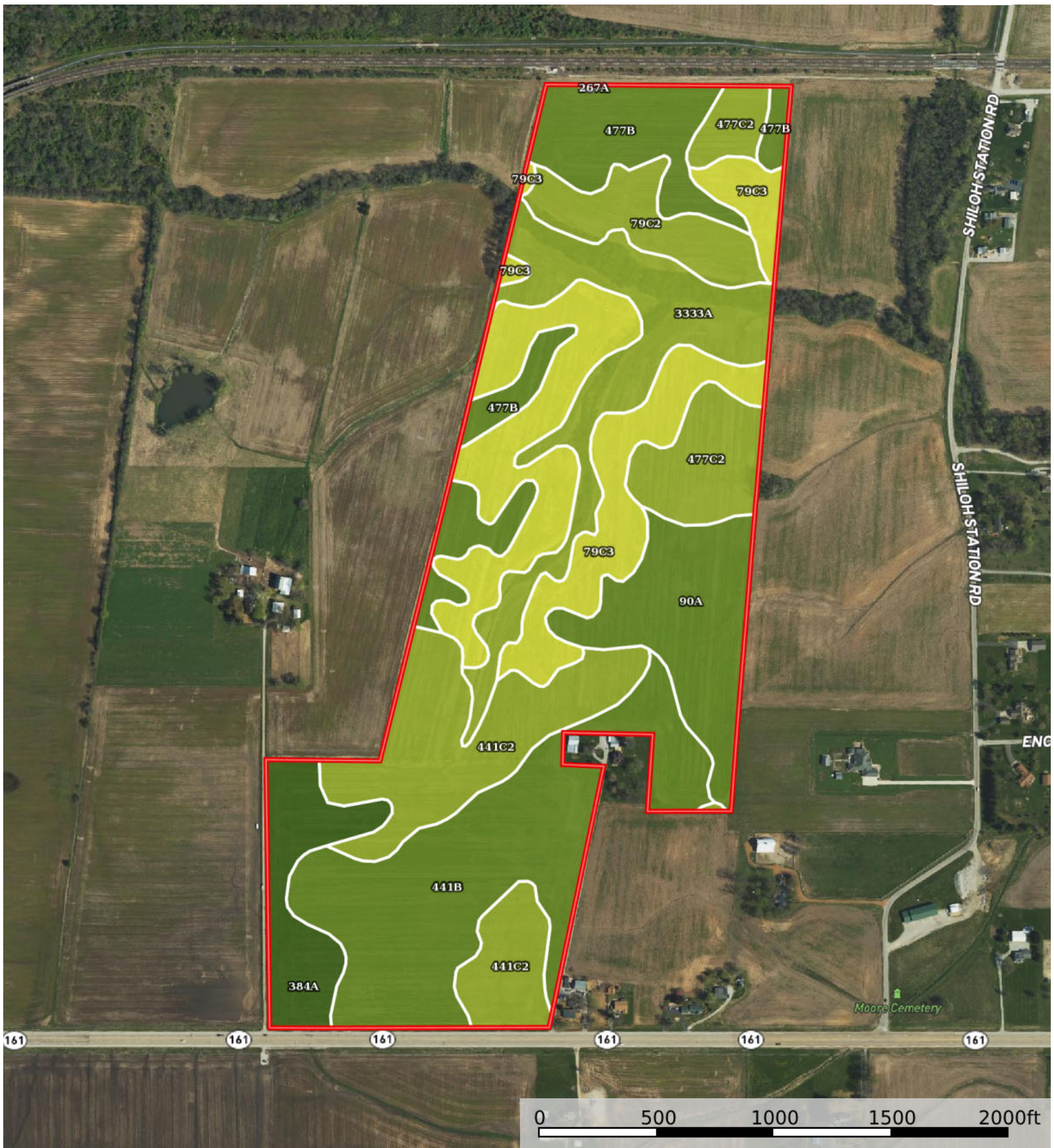
A-30765
St. Clair County, Illinois, 120.49 AC +/-




Boundary



 Boundary



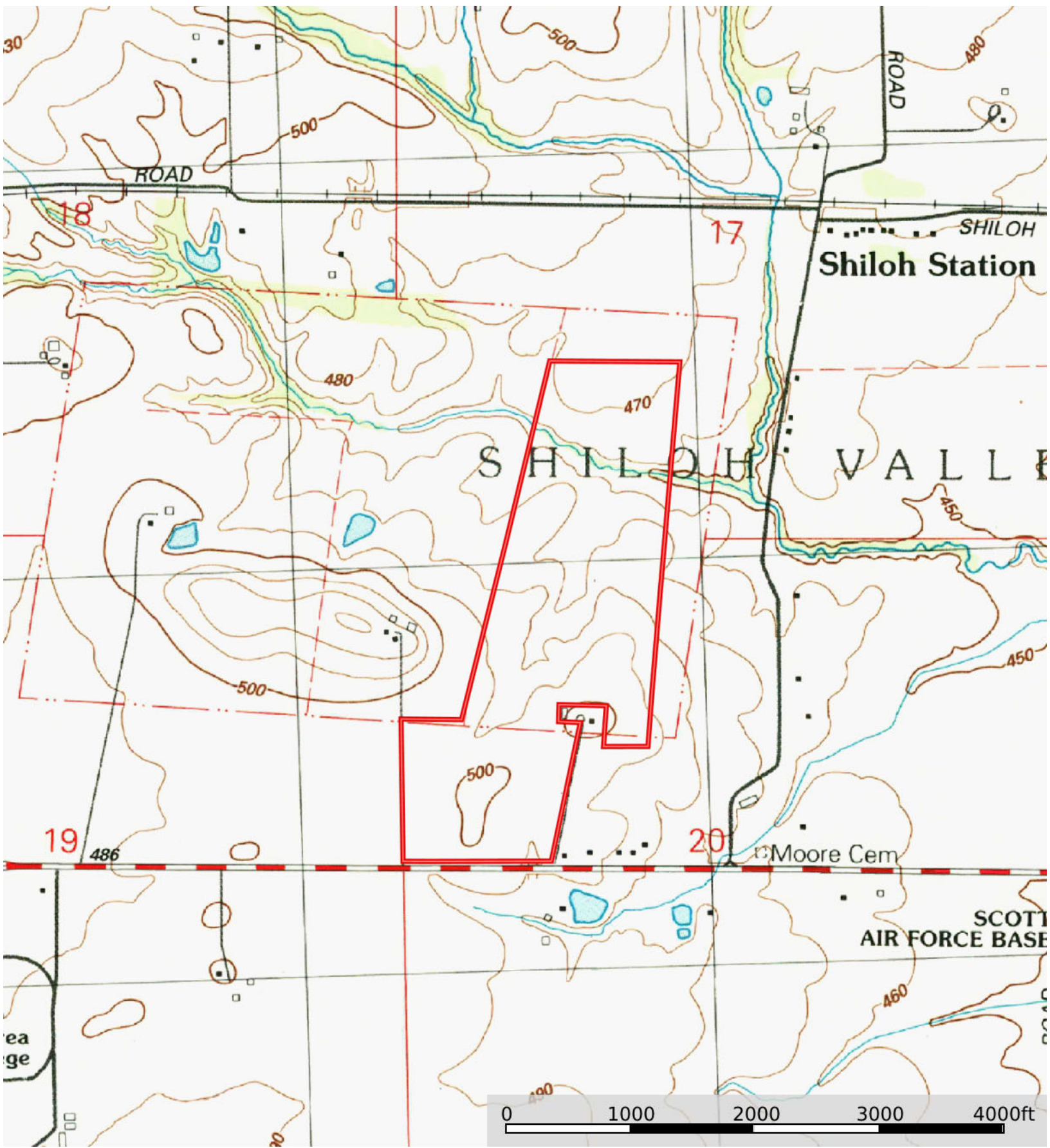
 Boundary


Boundary 119.69 ac

SOIL CODE	SOIL DESCRIPTION	ACRES	%	PI	NCCPI	CAP
441B	Wakenda silt loam, 2 to 5 percent slopes	23.07	19.27	138	92	2e
79C3	Menfro silt clay loam, 5 to 10 percent slopes, severely eroded	22.61	18.89	103	70	4e
441C2	Wakenda silt loam, 5 to 10 percent slopes, eroded	17.04	14.24	129	85	3e
3333A	Wakeland silt loam, 0 to 2 percent slopes, frequently flooded	13.79	11.52	115	79	3w
477B	Winfield silt loam, 2 to 5 percent slopes	12.38	10.34	117	85	2e
90A	Bethalto silt loam, 0 to 2 percent slopes	10.84	9.06	134	90	2w
477C2	Winfield silt loam, 5 to 10 percent slopes, eroded	7.52	6.28	111	80	3e
384A	Edwardsville silt loam, 0 to 2 percent slopes	6.72	5.61	141	94	1
79C2	Menfro silt loam, 5 to 10 percent slopes, eroded	5.67	4.74	112	78	3e
267A	Caseyville silt loam, 0 to 2 percent slopes	0.05	0.04	126	88	2w
TOTALS		119.69(*)	100%	122.15	83.13	2.69

(*) Total acres may differ in the second decimal compared to the sum of each acreage soil. This is due to a round error because we only show the acres of each soil with two decimal.





 Boundary