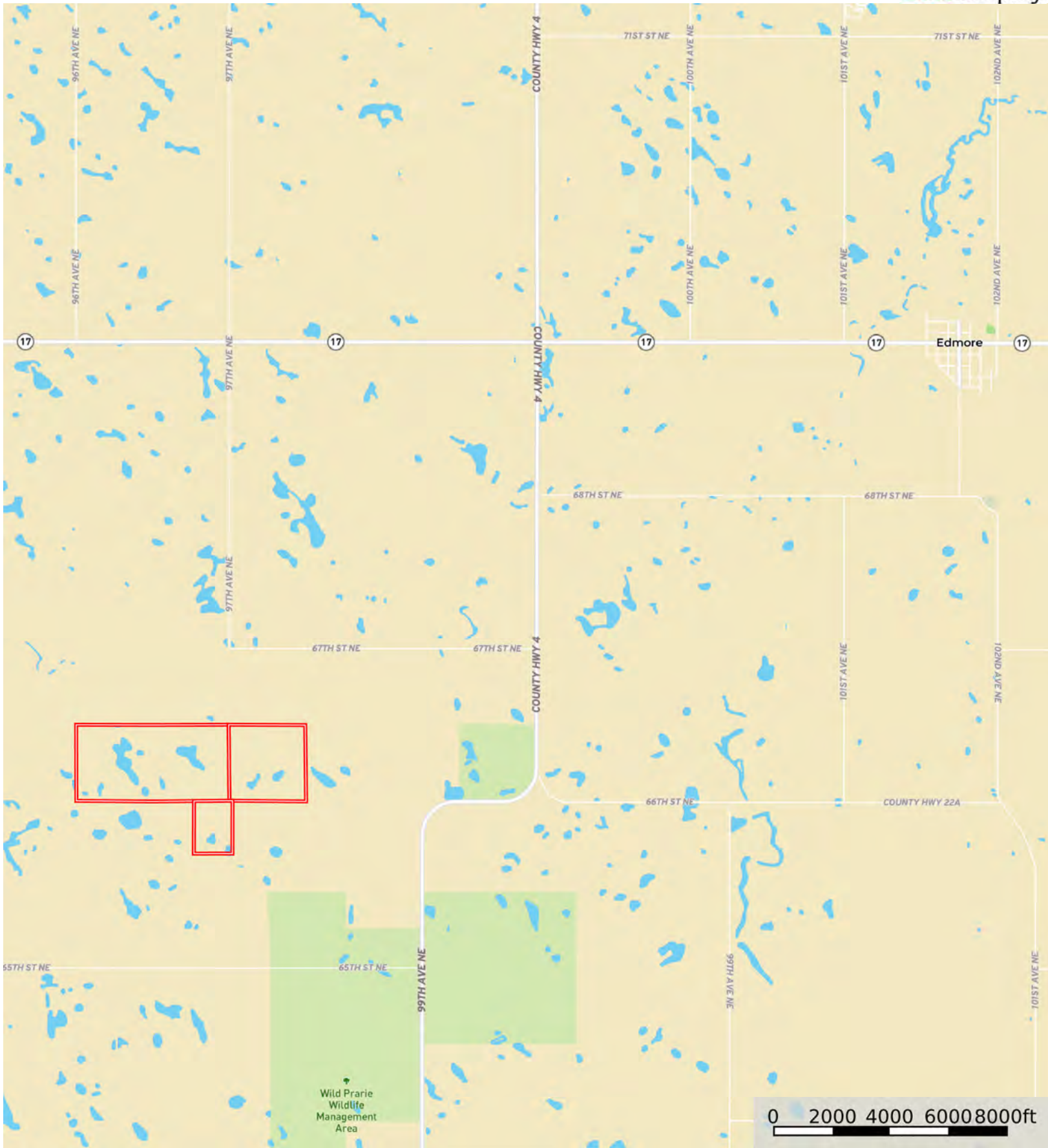


A-30803

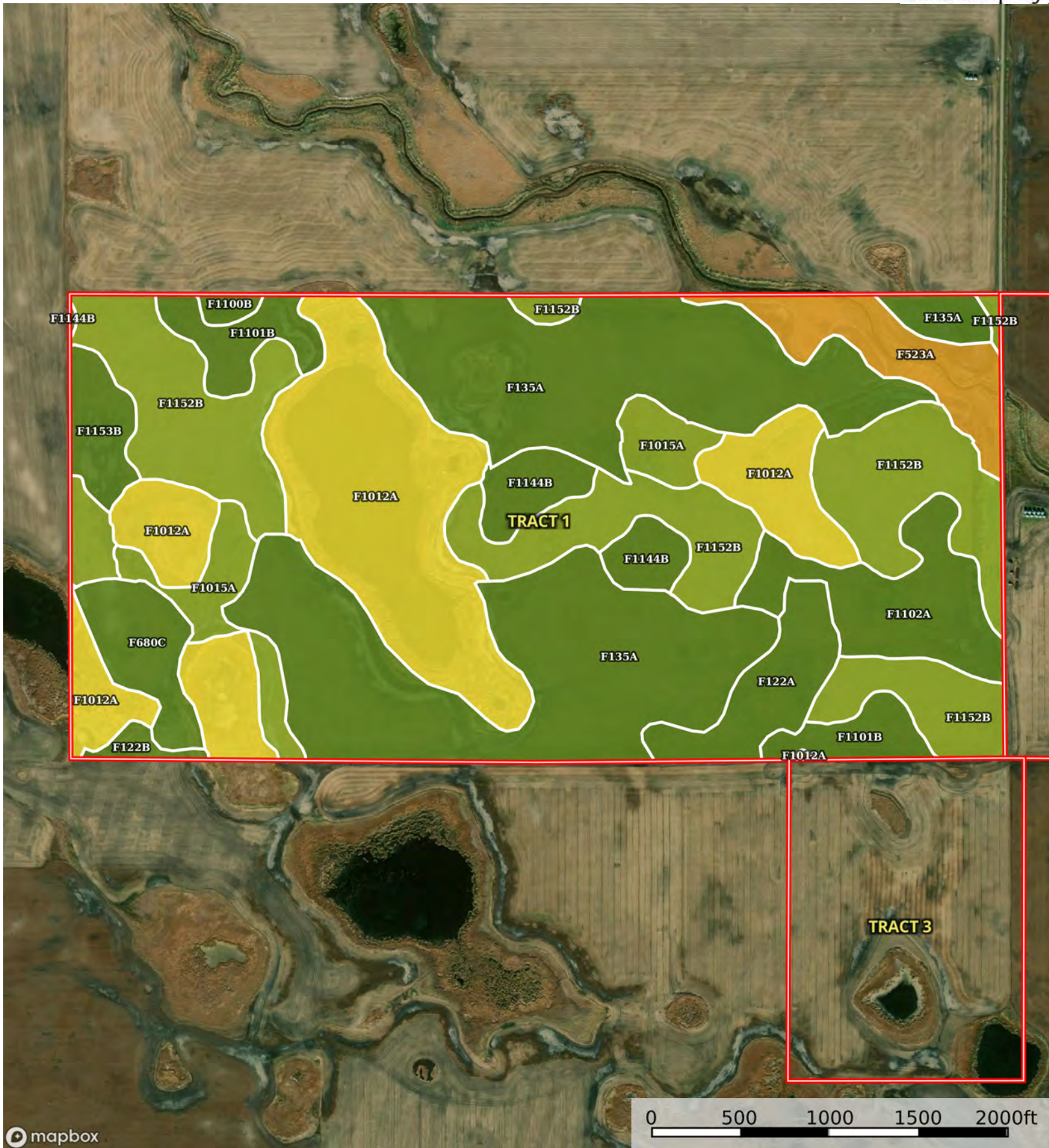
Ramsey County, North Dakota, 534.21 AC +/-



Boundary



Boundary



Boundary



| Boundary 316.72 ac

SOIL CODE	SOIL DESCRIPTION	ACRES	%	CPI	NCCPI	CAP
F135A	Hamerly-Cresbard loams, 0 to 3 percent slopes	97.86	30.9	76	52	2e
F1012A	Parnell-Vallers, saline, complex, 0 to 2 percent slopes	66.02	20.84	34	29	5w
F1152B	Balaton-Souris-Svea loams, 0 to 4 percent slopes	64.29	20.3	78	57	3e
F1102A	Hamerly-Wyard-Tonka complex, 0 to 3 percent slopes	16.06	5.07	72	51	2e
F523A	Lowe-Fluvaquents, channeled complex, 0 to 2 percent slopes, frequently flooded	12.37	3.91	21	16	6w
F1015A	Hamerly, saline-Wyard loams, 0 to 3 percent slopes	12.12	3.83	61	45	3s
F1101B	Hamerly-Wyard loams, 0 to 4 percent slopes	11.43	3.61	73	53	2e
F122A	Svea-Cresbard loams, 0 to 3 percent slopes	10.37	3.27	79	55	2c
F680C	Barnes-Sioux complex, 3 to 9 percent slopes	8.72	2.75	55	40	2e
F1144B	Barnes-Buse loams, 2 to 6 percent slopes	8.7	2.75	72	52	2e
F1153B	Souris-Balaton-Svea loams, 0 to 4 percent slope	5.98	1.89	82	57	2e
F122B	Barnes-Cresbard loams, 3 to 6 percent slopes	1.64	0.52	76	50	2e
F1100B	Hamerly-Tonka complex, 0 to 4 percent slopes	1.16	0.37	64	49	2e
TOTALS		316.72(*)	100%	64.1	46.37	3.02









(*) Total acres may differ in the second decimal compared to the sum of each acreage soil. This is due to a round error because we only show the acres of each soil with two decimal.

Capability Legend

Increased Limitations and Hazards

Decreased Adaptability and Freedom of Choice Users

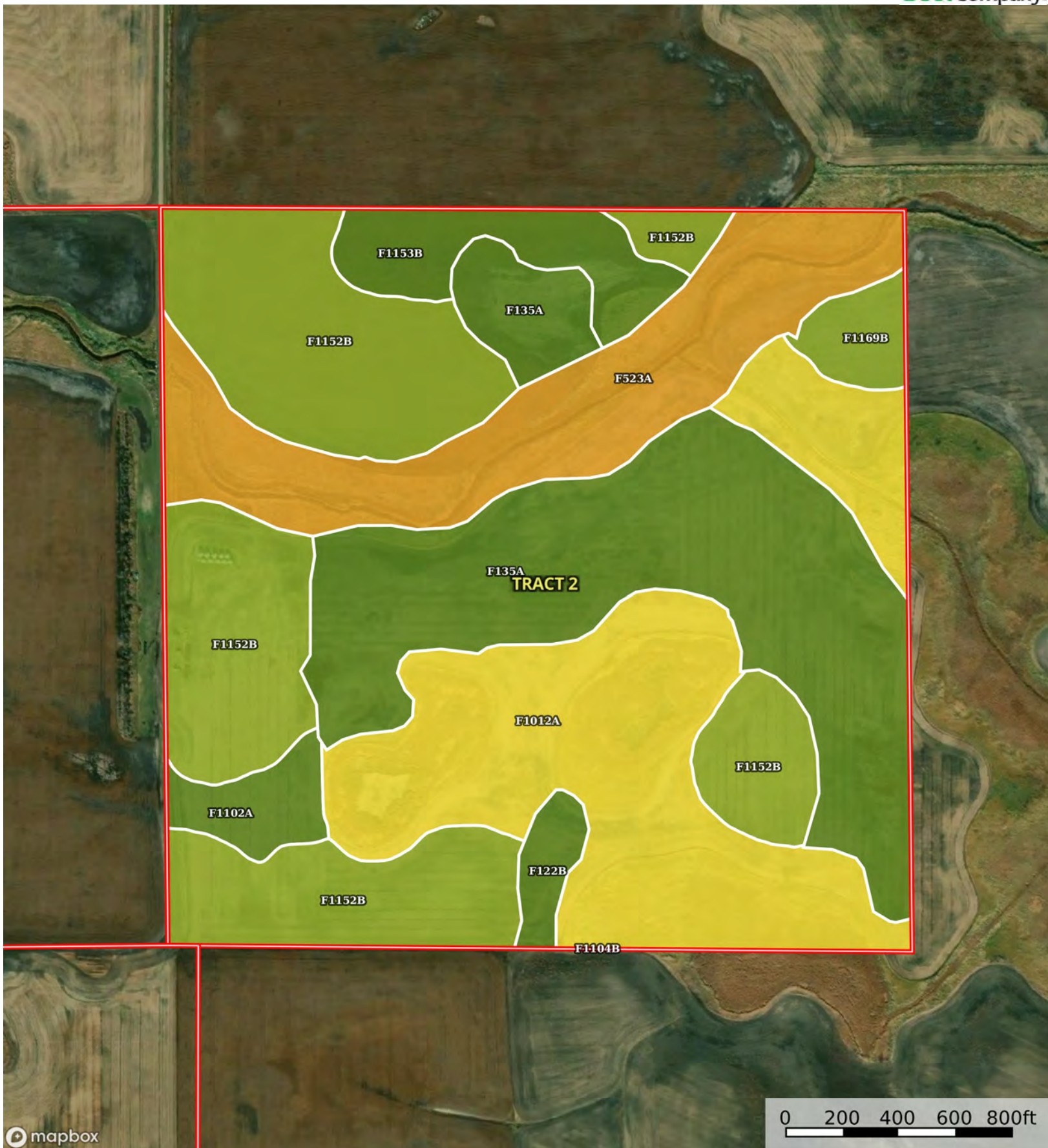
Land, Capability

								
	1	2	3	4	5	6	7	8
'Wild Life'	•	•	•	•	•	•	•	•
Forestry	•	•	•	•	•	•	•	
Limited	•	•	•	•	•	•	•	
Moderate	•	•	•	•	•	•		
Intense	•	•	•	•	•			
Limited	•	•	•	•				
Moderate	•	•	•					
Intense	•	•						
Very Intense	•							

Grazing Cultivation

(c) climatic limitations (e) susceptibility to erosion

(s) soil limitations within the rooting zone (w) excess of water



Boundary

Boundary 158.66 ac

SOIL CODE	SOIL DESCRIPTION	ACRES	%	CPI	NCCPI	CAP
F1152B	Balaton-Souris-Svea loams, 0 to 4 percent slopes	44.36	27.96	78	57	3e
F135A	Hamerly-Cresbard loams, 0 to 3 percent slopes	39.17	24.69	76	52	2e
F1012A	Parnell-Vallers, saline, complex, 0 to 2 percent slopes	37.07	23.36	34	29	5w
F523A	Lowe-Fluvaquents, channeled complex, 0 to 2 percent slopes, frequently flooded	22.71	14.31	21	16	6w
F1153B	Souris-Balaton-Svea loams, 0 to 4 percent slope	6.95	4.38	82	57	2e
F1102A	Hamerly-Wyard-Tonka complex, 0 to 3 percent slopes	3.5	2.21	72	51	2e
F1169B	Balaton-Souris loams, 0 to 4 percent slopes	2.78	1.75	77	56	3e
F122B	Barnes-Cresbard loams, 3 to 6 percent slopes	2.11	1.33	76	50	2e
F1104B	Hamerly-Balaton loams, 0 to 4 percent slopes	0.01	0.01	76	52	2e
TOTALS		158.66(*)	100%	59.07	43.11	3.57

(*) Total acres may differ in the second decimal compared to the sum of each acreage soil. This is due to a round error because we only show the acres of each soil with two decimal.



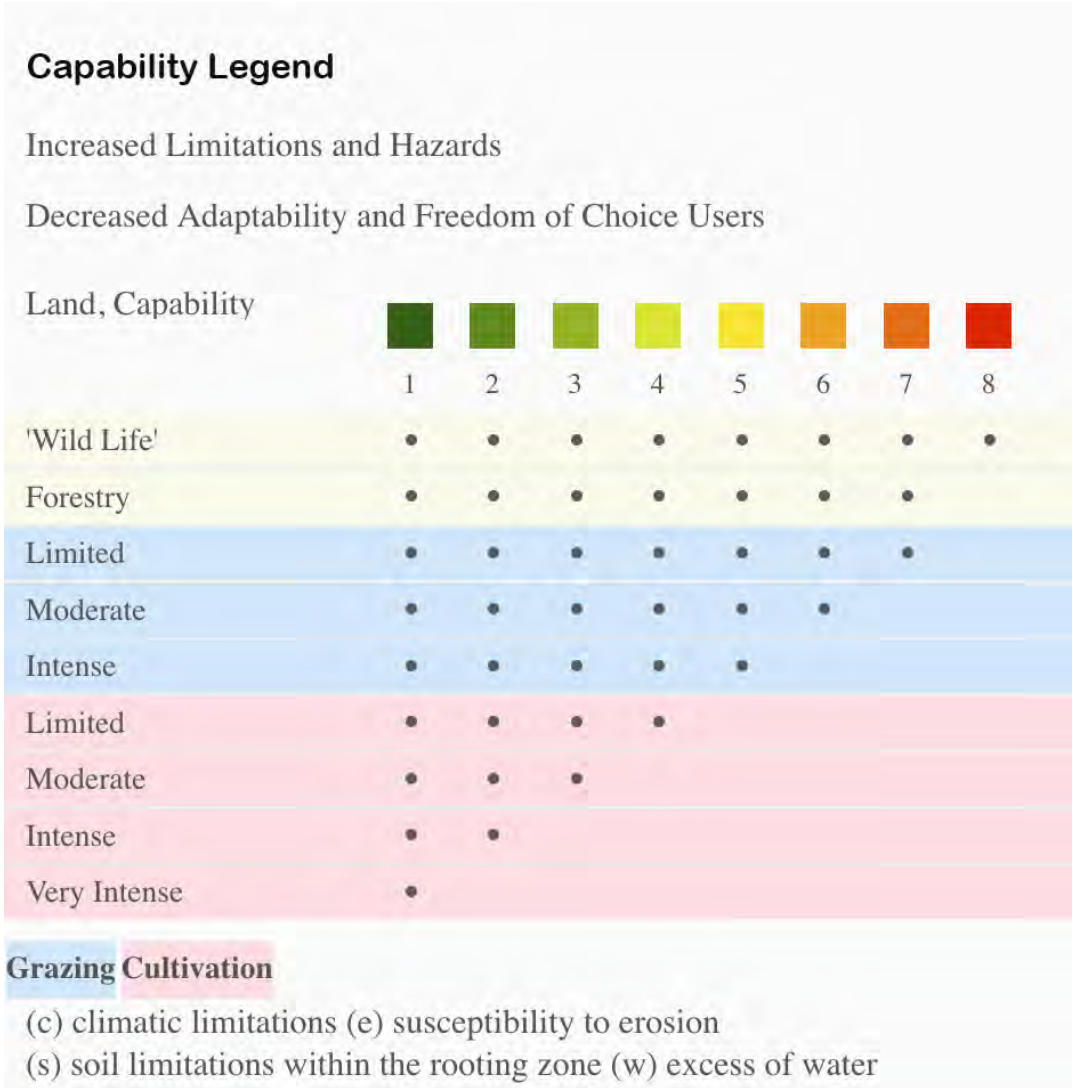


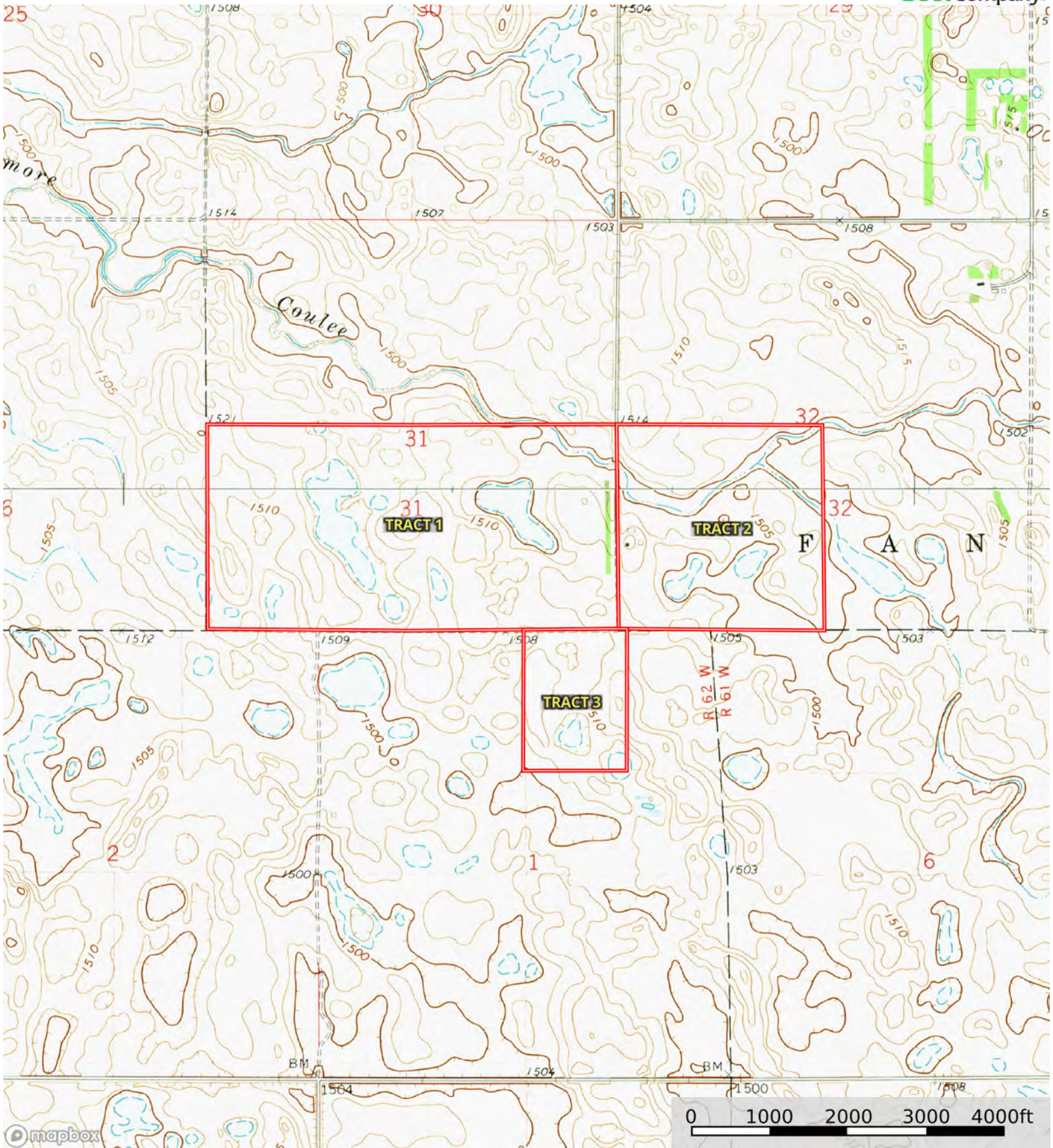
Boundary

| Boundary 55.28 ac

SOIL CODE	SOIL DESCRIPTION	ACRES	%	CPI	NCCPI	CAP
F1152B	Balaton-Souris-Svea loams, 0 to 4 percent slopes	22.5	40.7	78	57	3e
F1012A	Parnell-Vallers, saline, complex, 0 to 2 percent slopes	18.47	33.41	34	29	5w
F1101B	Hamerly-Wyard loams, 0 to 4 percent slopes	5.86	10.6	73	53	2e
F1015A	Hamerly, saline-Wyard loams, 0 to 3 percent slopes	4.45	8.05	61	45	3s
F1144B	Barnes-Buse loams, 2 to 6 percent slopes	3.12	5.64	72	52	2e
F135A	Hamerly-Cresbard loams, 0 to 3 percent slopes	0.4	0.72	76	52	2e
F3A	Parnell silty clay loam, 0 to 1 percent slopes	0.37	0.67	25	30	5w
F122B	Barnes-Cresbard loams, 3 to 6 percent slopes	0.11	0.2	76	50	2e
TOTALS		55.28(*)	100%	60.69	45.74	3.51

(*) Total acres may differ in the second decimal compared to the sum of each acreage soil. This is due to a round error because we only show the acres of each soil with two decimal.





Boundary

