



Farmers
National
Company™

www.FarmersNational.com

A-31054



SCAN THE QR CODE
FOR MORE INFO!



LAND FOR SALE

258± Acres, Reeves County, Texas

PRICE REDUCED
\$266,000

Highlights:

- Native rangeland
- Reserving all minerals owned
- Tax Parcel Number: 11329

For additional information, please contact:

Brent McDonald, Agent | (806) 503-2287

BMcDonald@FarmersNational.com

Property Information

Directions to Property:

Take Highway 285 southeast from Pecos for eight miles. The tract is one mile to the southeast.

Legal Description:

258 acres, more or less, out of the N 1/2 of Sec 1, Block 51, Township 7, Ab No 731, Reeves County, Texas

Property Description:

"Surface only" offering southeast of Pecos, Texas.

Farm Data:

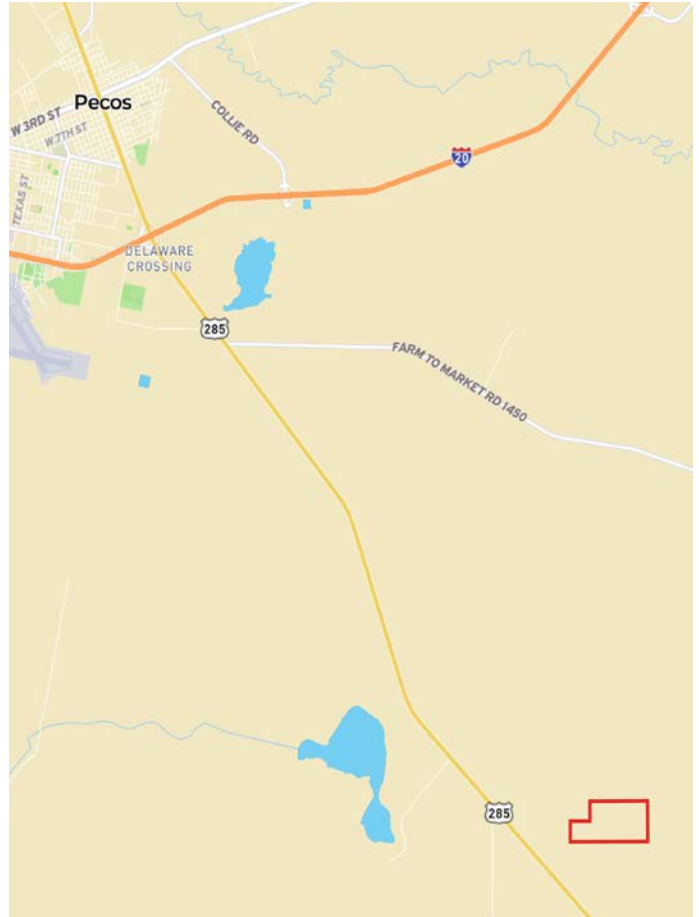
Pasture	<u>258.00 acres</u>
Total	258.00 acres



Soils Map



Property Location Map



Soils Description

SOIL CODE	SOIL DESCRIPTION	ACRES	%	CPI	NCCPI	CAP
32	Reakor association, nearly level	123.2 1	44.24	0	14	7e
12	Delnorte-Chilicotal association, rolling	90.51	32.5	0	5	7s
19	Hodgins soils, frequently flooded	37.87	13.6	0	24	6w
17	Hoban-Reeves-Holloman association, nearly level	26.92	9.67	0	8	7c
TOTALS		278.5 1(*)	100%	-	11.85	6.86

Information provided was obtained from sources deemed reliable, but the broker makes no guarantees as to its accuracy. All prospective buyers are urged to inspect the property, its title and to rely on their own conclusions. Seller reserves the right to refuse any or all offers submitted and may withdraw the property from offering without notice. Farmers National Company and its representatives on the reverse side are the Designated Agents for the seller.