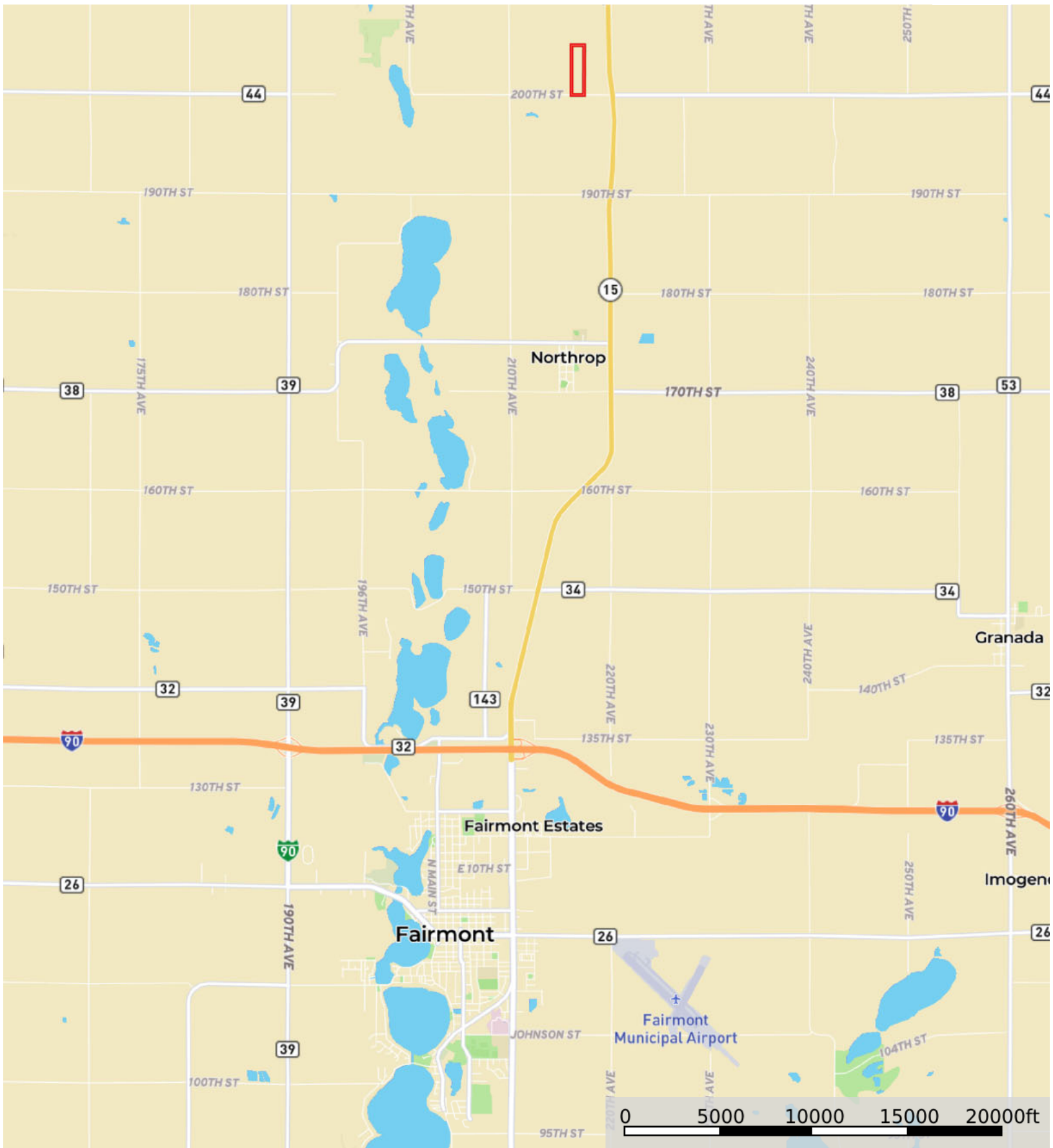




A-31308
Martin County, Minnesota, 40 AC +/-




 Boundary



 Boundary



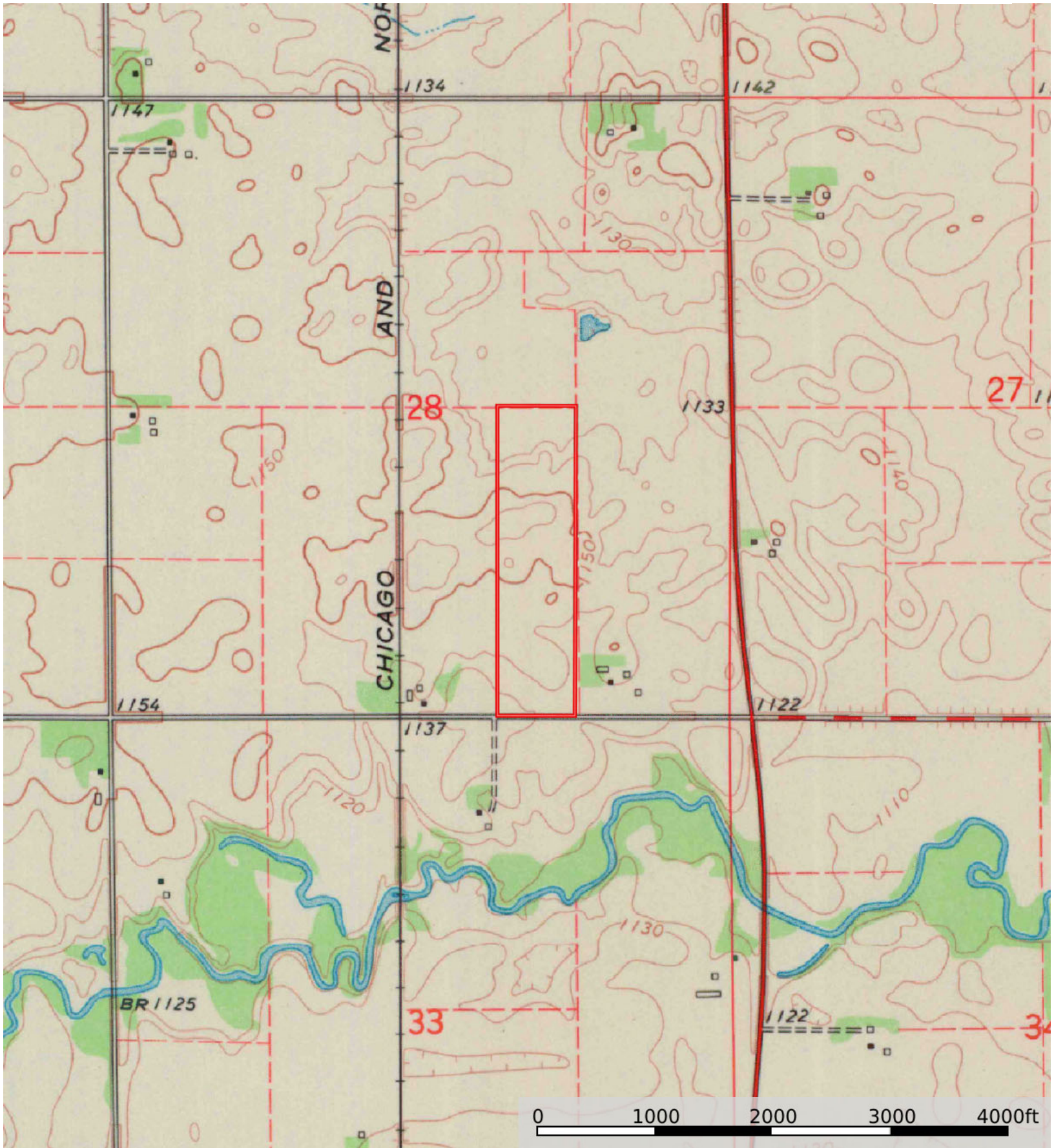
 Boundary


|  Boundary 40.21 ac

SOIL CODE	SOIL DESCRIPTION	ACRES	%	CPI	NCCPI	CAP
921C2	Clarion-Storden complex, 6 to 10 percent slopes, moderately eroded	18.19	45.24	87	68	3e
336	Delft clay loam, 0 to 2 percent slopes	6.89	17.14	94	79	2w
887B	Clarion-Swanlake complex, 2 to 6 percent slopes	5.77	14.35	92	82	2e
L83A	Webster clay loam, 0 to 2 percent slopes	5.65	14.05	93	83	2w
94B	Terril loam, 2 to 6 percent slopes	2.18	5.42	99	91	2e
L107A	Canisteo-Glencoe complex, 0 to 2 percent slopes	1.53	3.81	91	80	2w
TOTALS		40.21(*)	100%	90.56	75.71	2.45

(*) Total acres may differ in the second decimal compared to the sum of each acreage soil. This is due to a round error because we only show the acres of each soil with two decimal.





 Boundary