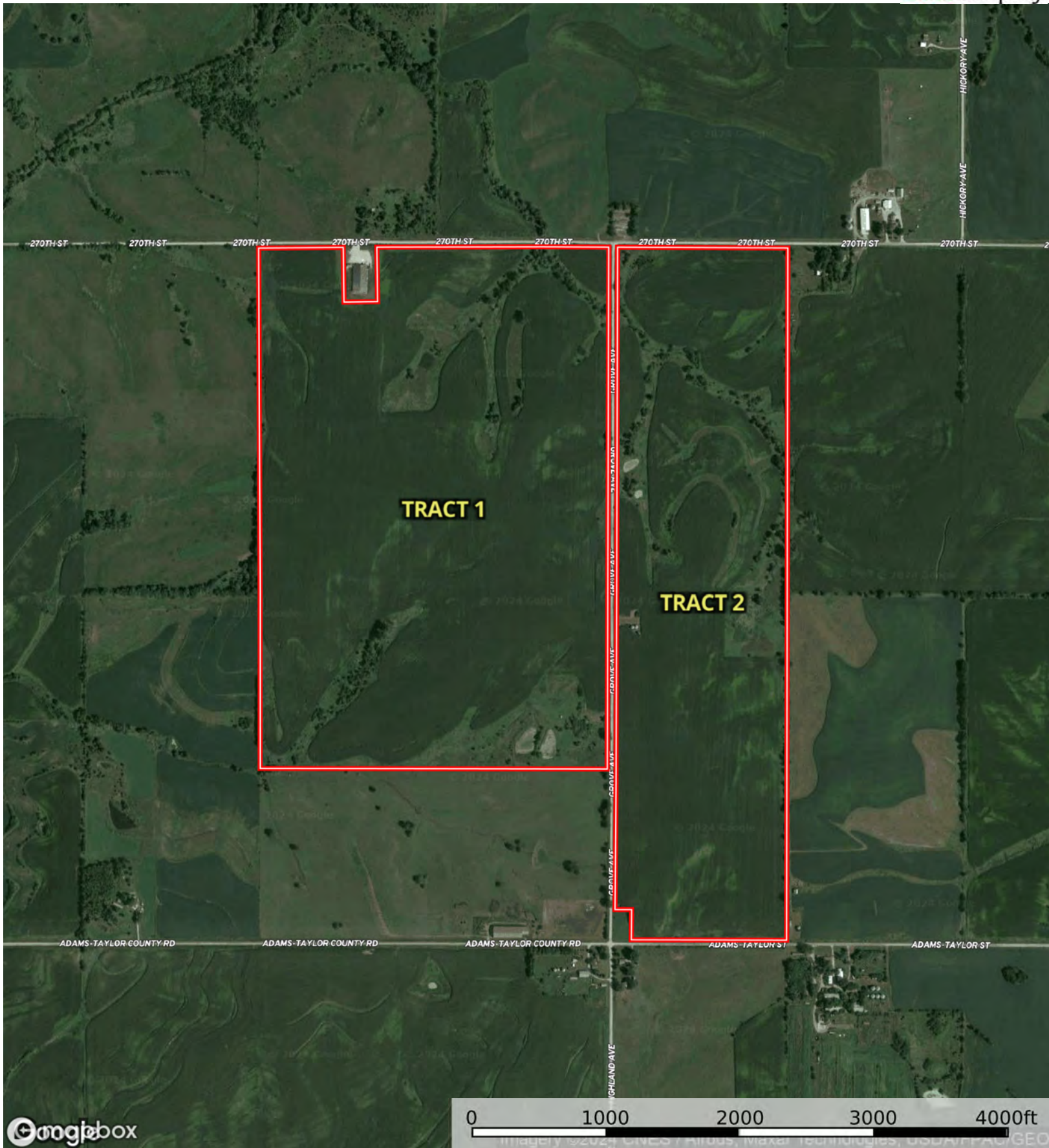


Boundary

A-31581

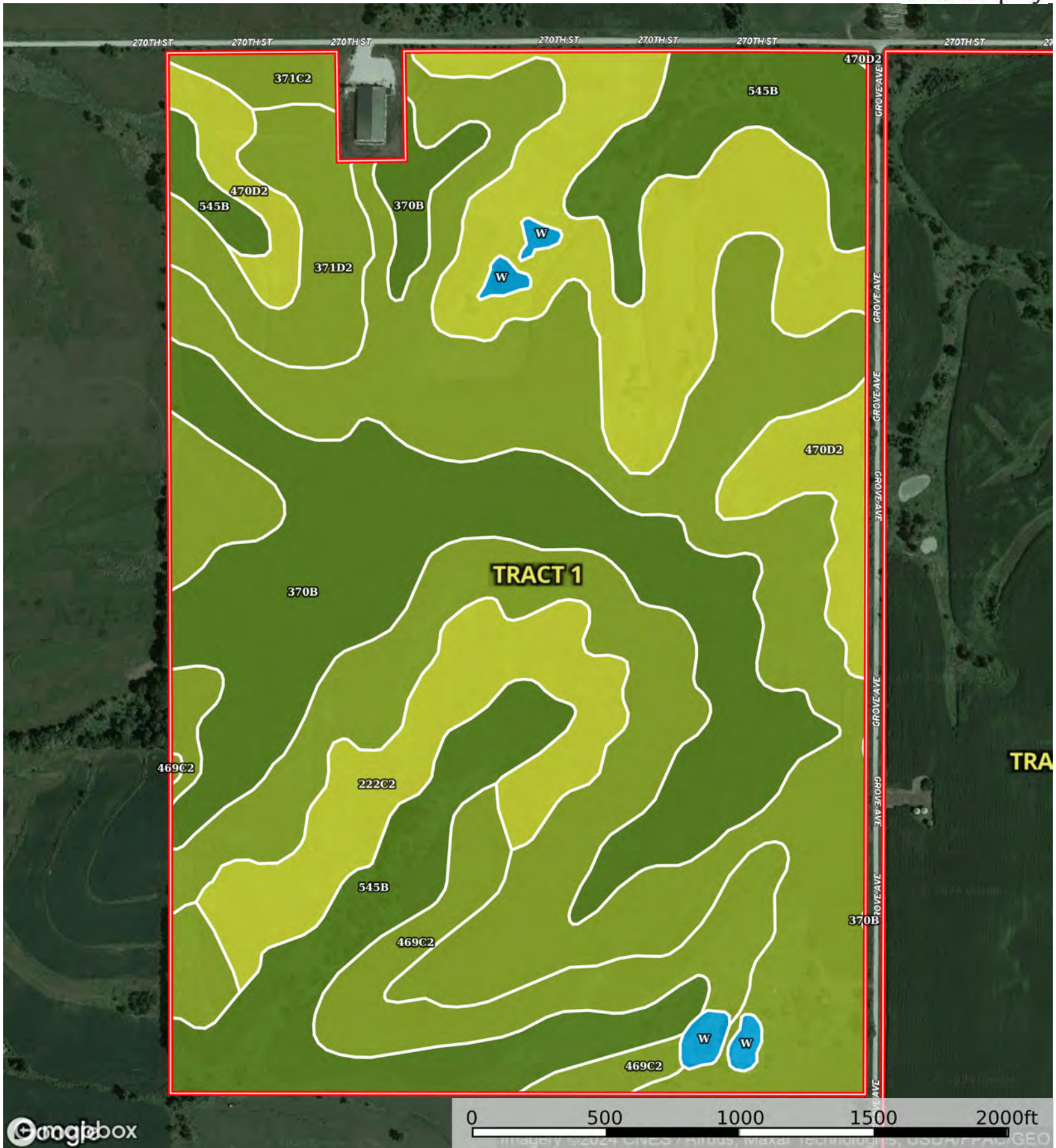
Adams County, Taylor County, Union County, Iowa, 1522.51 AC +/-



Boundary

Cris Miller
11516 Nicholas St

The information contained herein was obtained from sources deemed to be reliable. Land id™ Services makes no warranties or guarantees as to the completeness or accuracy thereof.



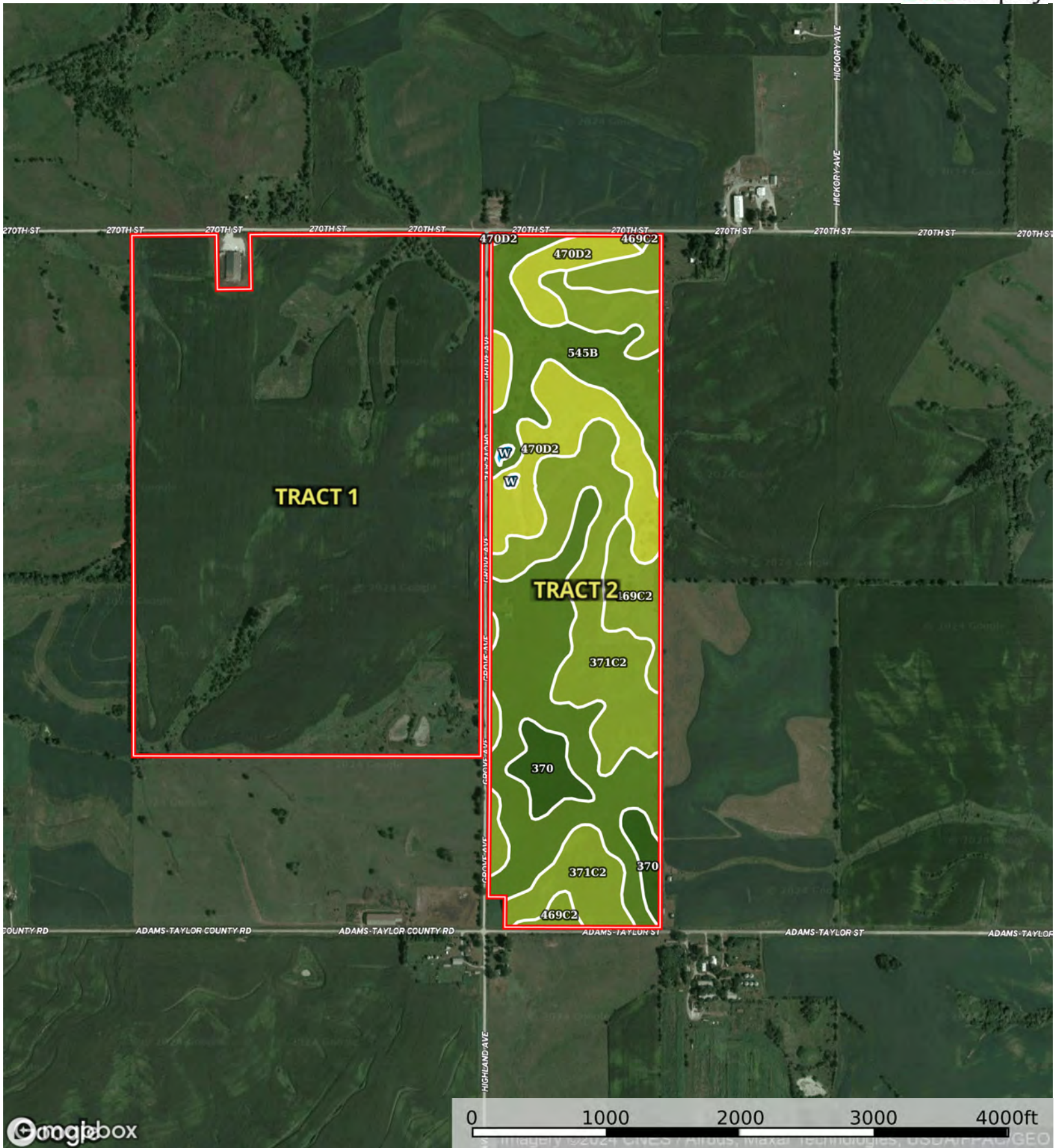
Boundary

| Boundary 231.32 ac

SOIL CODE	SOIL DESCRIPTION	ACRES	%	CSR2	CPI	NCCPI	CAP
371C2	Sharpsburg-Nira silty clay loams, 5 to 9 percent slopes, eroded	83.23	35.98	83.0	0	80	3e
370B	Sharpsburg silty clay loam, 2 to 5 percent slopes	40.67	17.58	91.0	0	91	2e
470D2	Lamoni-Shelby complex, 9 to 14 percent slopes, eroded	33.58	14.52	28.0	0	62	4e
545B	Zook-Ely-Gullied land complex, 2 to 5 percent slopes	31.37	13.56	64.0	0	7	2w
469C2	Lamoni-Clarinda-Shelby complex, 5 to 9 percent slopes, eroded	16.04	6.93	44.0	0	61	3e
222C2	Clarinda silty clay loam, 5 to 9 percent slopes, eroded	15.58	6.73	38.0	0	54	4w
371D2	Sharpsburg-Nira silty clay loams, 9 to 14 percent slopes, eroded	9.01	3.89	57.0	0	76	3e
W	Water	1.84	0.8	-	0	-	-
TOTALS		231.32(*)	100%	66.43	-	65.55	2.9

(*) Total acres may differ in the second decimal compared to the sum of each acreage soil. This is due to a round error because we only show the acres of each soil with two decimal.





Boundary

| Boundary 151.45 ac

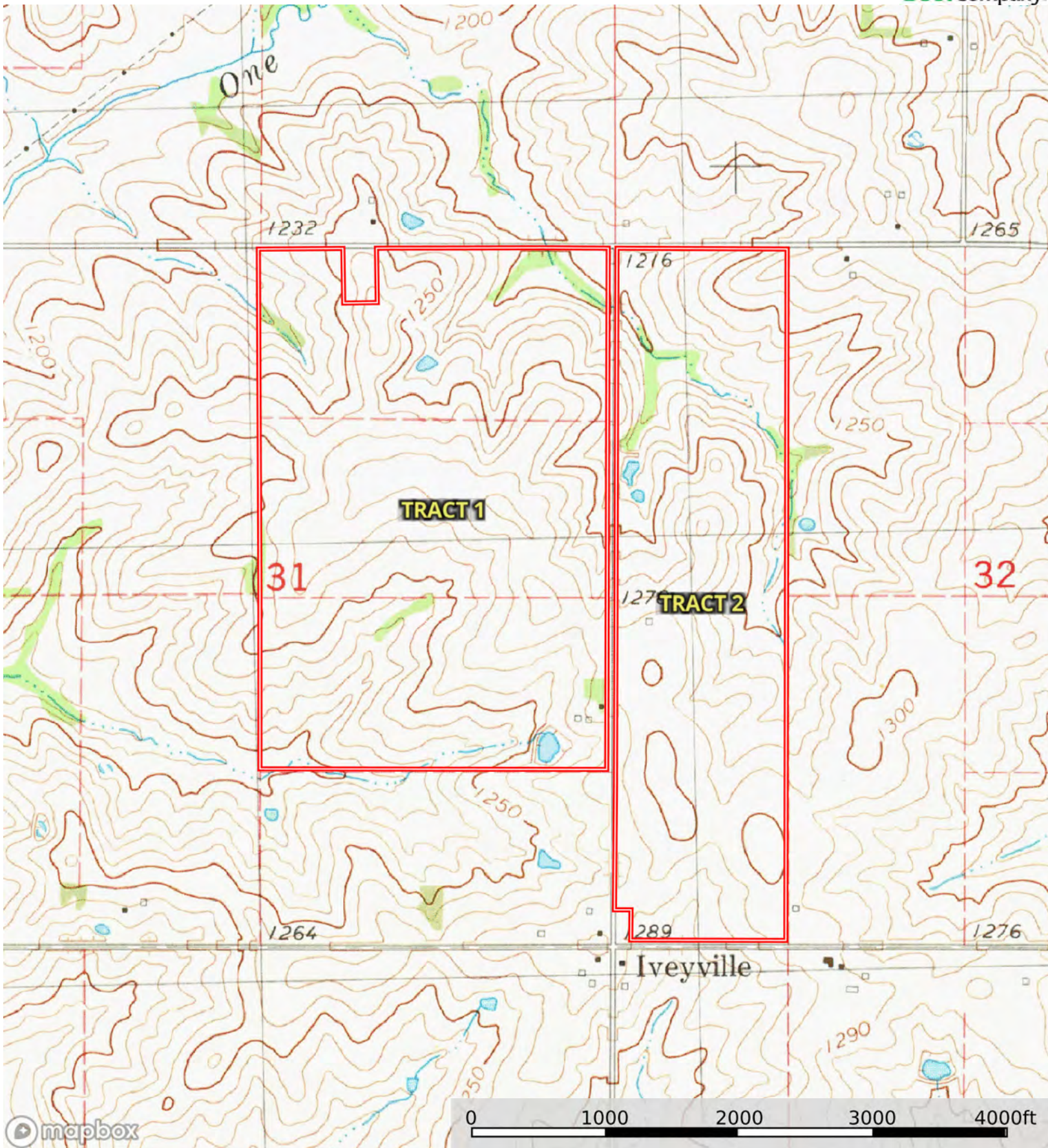
SOIL CODE	SOIL DESCRIPTION	ACRES	%	CSR2	CPI	NCCPI	CAP
371C2	Sharpsburg-Nira silty clay loams, 5 to 9 percent slopes, eroded	43.61	28.8	83.0	0	80	3e
370B	Sharpsburg silty clay loam, 2 to 5 percent slopes	37.56	24.8	91.0	0	91	2e
470D2	Lamoni-Shelby complex, 9 to 14 percent slopes, eroded	25.22	16.65	28.0	0	62	4e
545B	Zook-Ely-Gullied land complex, 2 to 5 percent slopes	20.39	13.46	64.0	0	7	2w
469C2	Lamoni-Clarinda-Shelby complex, 5 to 9 percent slopes, eroded	15.56	10.27	44.0	0	61	3e
370	Sharpsburg silty clay loam, 0 to 2 percent slopes	8.67	5.73	96.0	0	88	1
W	Water	0.44	0.29	-	0	-	-
TOTALS		151.45(*)	100%	69.77	-	68.18	2.67

(*) Total acres may differ in the second decimal compared to the sum of each acreage soil. This is due to a round error because we only show the acres of each soil with two decimal.



A-31581

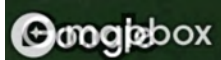
Adams County, Taylor County, Union County, Iowa, 1522.51 AC +/-



Boundary

A-31581

Adams County, Taylor County, Union County, Iowa, 1522.51 AC +/-

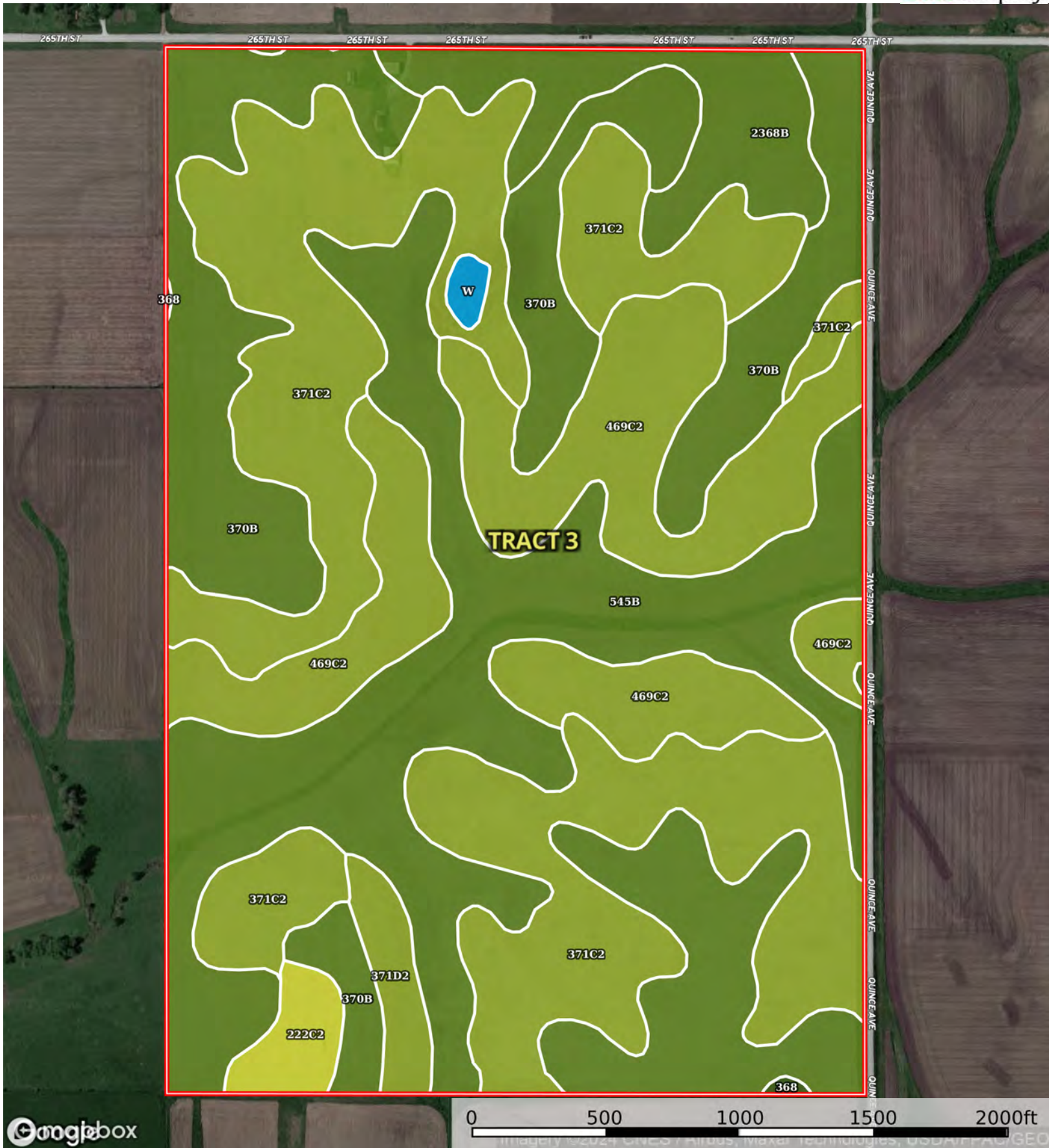


0 500 1000 1500 2000ft

Boundary



The information contained herein was obtained from sources deemed to be reliable. Land id™ Services makes no warranties or guarantees as to the completeness or accuracy thereof.



Boundary

| Boundary 234.78 ac

SOIL CODE	SOIL DESCRIPTION	ACRES	%	CSR2	CPI	NCCPI	CAP
371C2	Sharpsburg-Nira silty clay loams, 5 to 9 percent slopes, eroded	72.27	30.79	83.0	0	80	3e
370B	Sharpsburg silty clay loam, 2 to 5 percent slopes	53.97	22.99	91.0	0	91	2e
545B	Zook-Ely-Gullied land complex, 2 to 5 percent slopes	50.26	21.41	64.0	0	7	2w
469C2	Lamoni-Clarinda-Shelby complex, 5 to 9 percent slopes, eroded	38.23	16.29	44.0	0	61	3e
2368B	Macksburg-Nira complex, 2 to 5 percent slopes	12.31	5.24	91.0	0	88	2e
371D2	Sharpsburg-Nira silty clay loams, 9 to 14 percent slopes, eroded	3.51	1.5	57.0	0	76	3e
222C2	Clarinda silty clay loam, 5 to 9 percent slopes, eroded	3.22	1.37	38.0	0	54	4w
W	Water	0.75	0.32	-	0	-	-
368	Macksburg silty clay loam, 0 to 2 percent slopes	0.26	0.11	93.0	0	88	1
TOTALS		234.78(*)	100%	73.59	-	63.57	2.51









(*) Total acres may differ in the second decimal compared to the sum of each acreage soil. This is due to a round error because we only show the acres of each soil with two decimal.

Capability Legend

Increased Limitations and Hazards

Decreased Adaptability and Freedom of Choice Users

Land, Capability

								
	1	2	3	4	5	6	7	8
'Wild Life'	•	•	•	•	•	•	•	•
Forestry	•	•	•	•	•	•	•	
Limited	•	•	•	•	•	•	•	
Moderate	•	•	•	•	•	•		
Intense	•	•	•	•	•			
Limited	•	•	•	•				
Moderate	•	•	•					
Intense	•	•						
Very Intense	•							

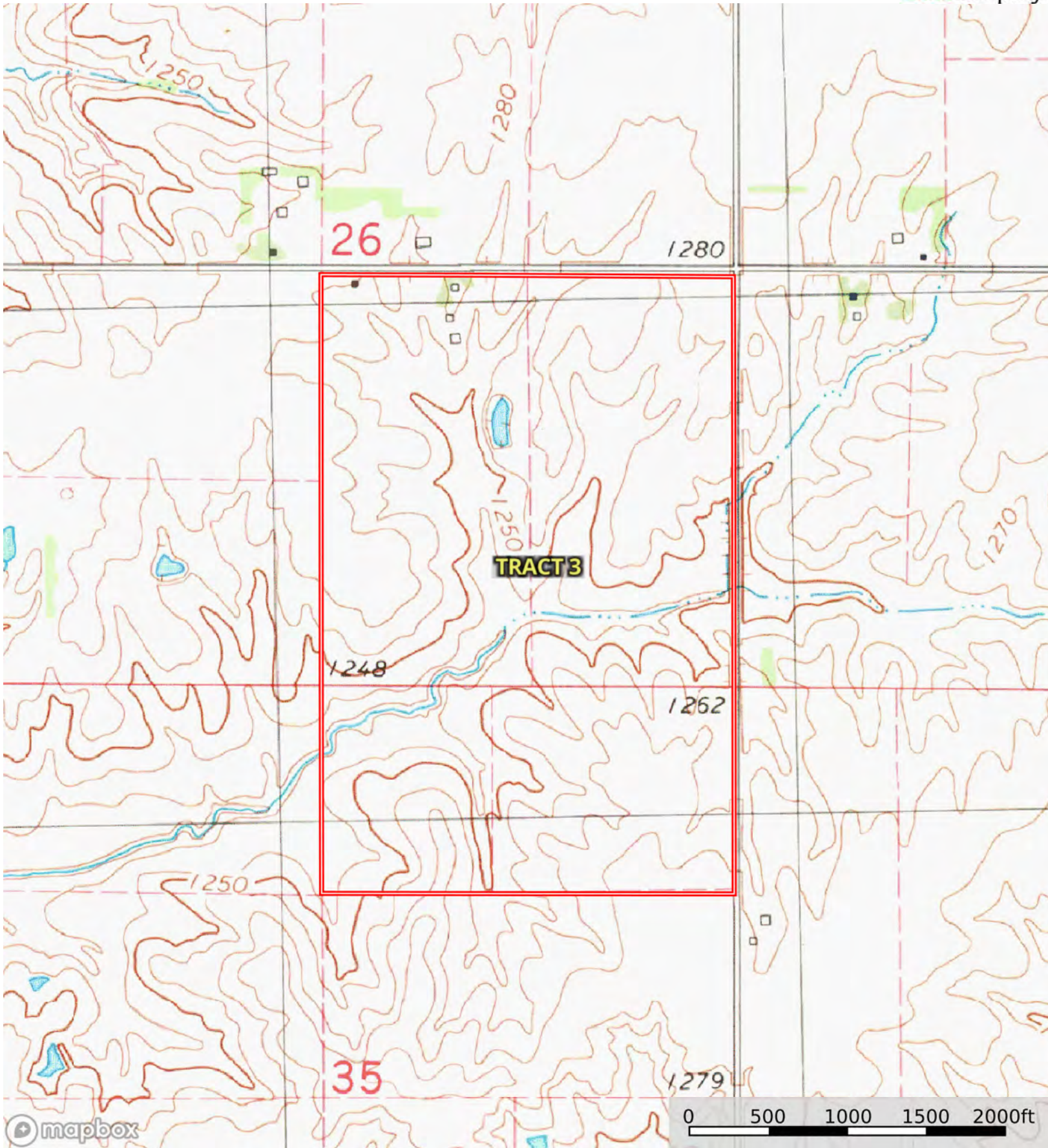
Grazing Cultivation

(c) climatic limitations (e) susceptibility to erosion

(s) soil limitations within the rooting zone (w) excess of water

A-31581

Adams County, Taylor County, Union County, Iowa, 1522.51 AC +/-



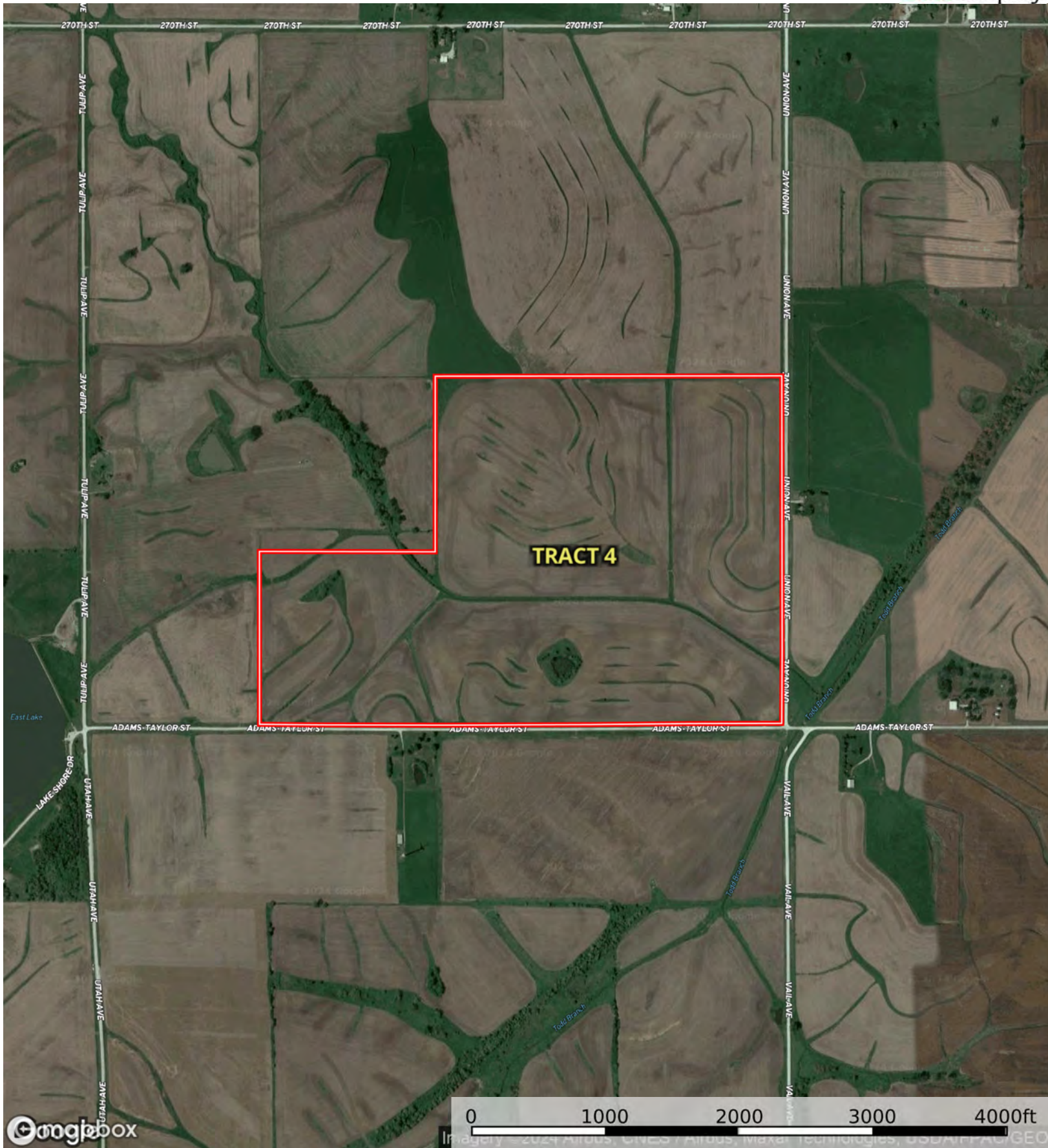
Boundary



The information contained herein was obtained from sources deemed to be reliable. Land id™ Services makes no warranties or guarantees as to the completeness or accuracy thereof.

A-31581

Adams County, Taylor County, Union County, Iowa, 1522.51 AC +/-



Boundary



The information contained herein was obtained from sources deemed to be reliable. Land id™ Services makes no warranties or guarantees as to the completeness or accuracy thereof.



Boundary



Boundary 194.82 ac

SOIL CODE	SOIL DESCRIPTION	ACRES	%	CSR2	CPI	NCCPI	CAP
545B	Zook-Ely-Gullied land complex, 2 to 5 percent slopes	60.74	31.18	64.0	0	7	2w
371C2	Sharpsburg-Nira silty clay loams, 5 to 9 percent slopes, eroded	34.88	17.91	83.0	0	80	3e
Y93D2	Shelby-Adair clay loams, dissected till plain, 9 to 14 percent slopes, eroded	21.85	11.22	35.0	0	67	3e
370B	Sharpsburg silty clay loam, 2 to 5 percent slopes	17.64	9.06	91.0	0	91	2e
Y192D2	Adair clay loam, dissected till plain, 9 to 14 percent slopes, eroded	11.28	5.79	16.0	0	60	4e
222D	Clarinda silty clay loam, 9 to 14 percent slopes	10.82	5.55	13.0	0	57	4e
Y24E2	Shelby clay loam, dissected till plain, 14 to 18 percent slopes, eroded	8.06	4.14	35.0	0	71	4e
469C3	Lamoni-Clarinda-Shelby complex, 5 to 9 percent slopes, severely eroded	7.13	3.66	39.0	0	53	4e
822D2	Lamoni silty clay loam, 9 to 14 percent slopes, eroded	5.15	2.64	10.0	0	58	4e
435	Zook-Mt. Sterling complex, 0 to 2 percent slopes, occasionally flooded	3.61	1.85	73.0	0	67	2w
222C2	Clarinda silty clay loam, 5 to 9 percent slopes, eroded	3.58	1.84	38.0	0	54	4w
469C2	Lamoni-Clarinda-Shelby complex, 5 to 9 percent slopes, eroded	3.4	1.75	44.0	0	61	3e
8B	Judson silty clay loam, dissected till plain, 2 to 5 percent slopes	3.07	1.58	93.0	0	94	2e
470D2	Lamoni-Shelby complex, 9 to 14 percent slopes, eroded	2.44	1.25	28.0	0	62	4e
569C	Nira-Clearfield complex, 5 to 9 percent slopes	0.73	0.37	78.0	0	83	3e
W	Water	0.44	0.23	-	0	-	-
TOTALS		194.82(*)	100%	56.7	-	51.18	2.81









(*) Total acres may differ in the second decimal compared to the sum of each acreage soil. This is due to a round error because we only show the acres of each soil with two decimal.

Capability Legend

Increased Limitations and Hazards

Decreased Adaptability and Freedom of Choice Users

Land, Capability

								
	1	2	3	4	5	6	7	8
'Wild Life'	•	•	•	•	•	•	•	•
Forestry	•	•	•	•	•	•	•	
Limited	•	•	•	•	•	•	•	
Moderate	•	•	•	•	•	•		
Intense	•	•	•	•	•			
Limited	•	•	•	•				
Moderate	•	•	•					
Intense	•	•						
Very Intense	•							

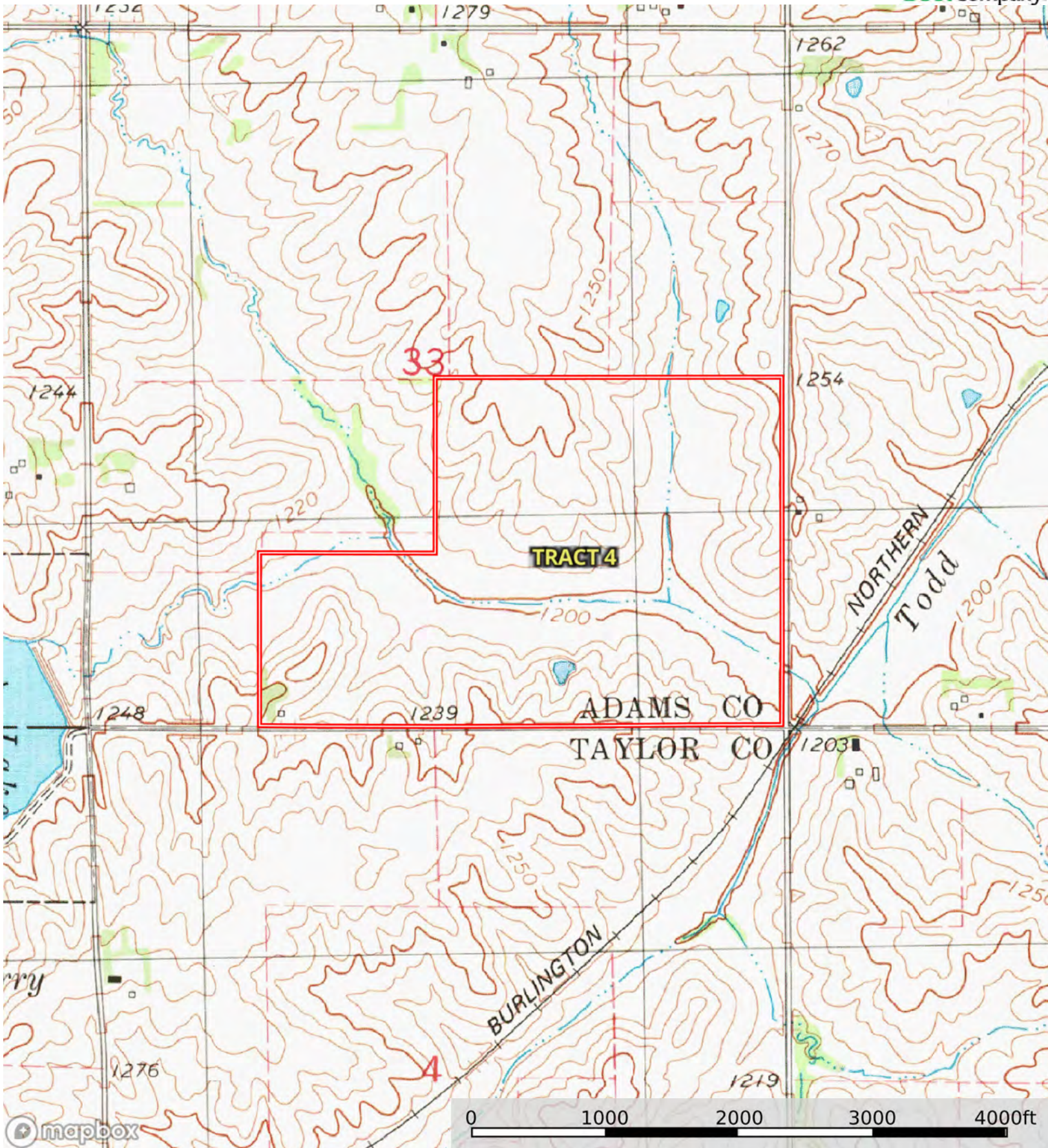
Grazing Cultivation

(c) climatic limitations (e) susceptibility to erosion

(s) soil limitations within the rooting zone (w) excess of water

A-31581

Adams County, Taylor County, Union County, Iowa, 1522.51 AC +/-



Boundary



The information contained herein was obtained from sources deemed to be reliable. Land id™ Services makes no warranties or guarantees as to the completeness or accuracy thereof.