

A-31581

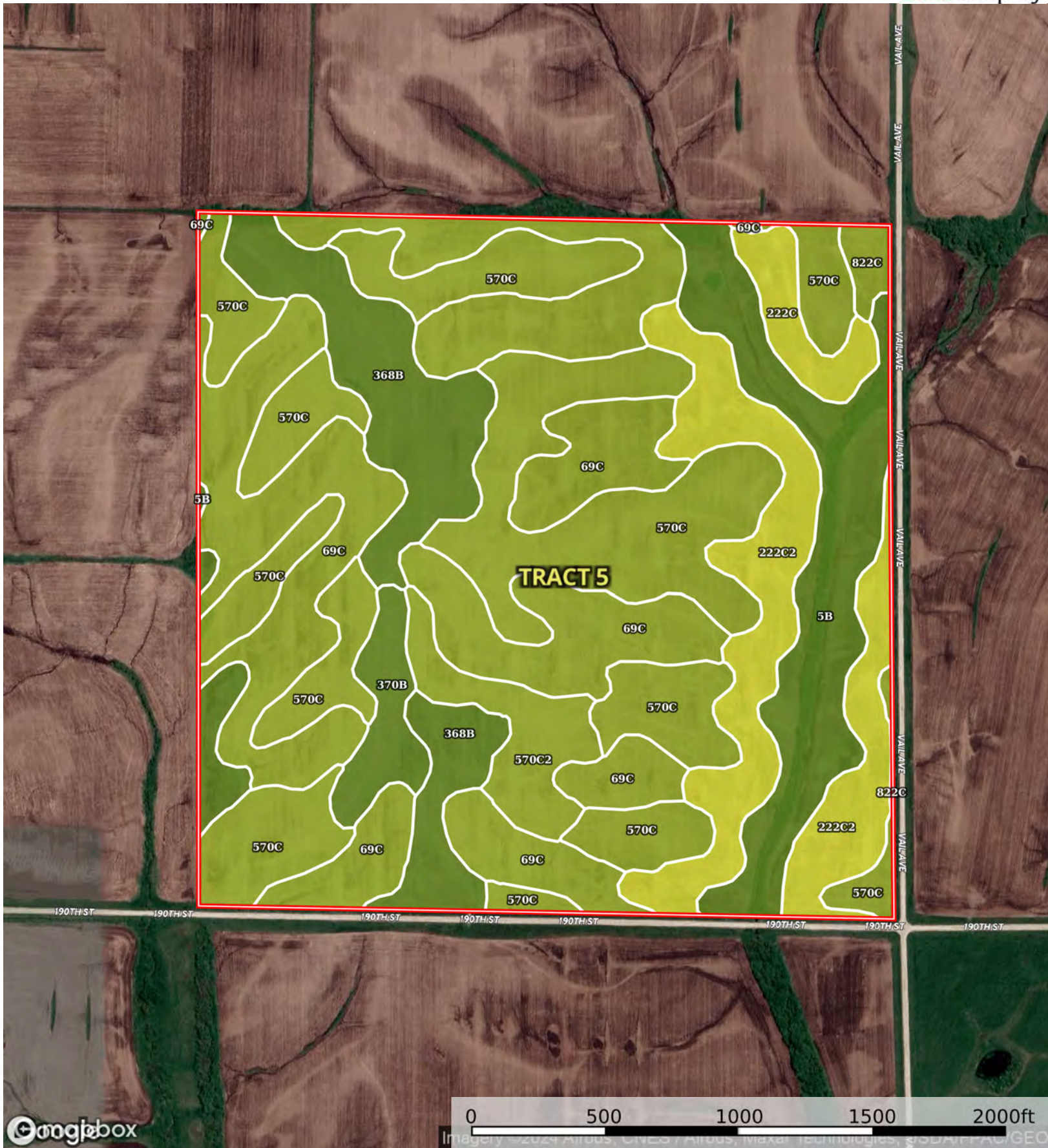
Adams County, Taylor County, Union County, Iowa, 1522.51 AC +/-



Boundary



The information contained herein was obtained from sources deemed to be reliable. Land id™ Services makes no warranties or guarantees as to the completeness or accuracy thereof.



Boundary



| Boundary 155.61 ac

SOIL CODE	SOIL DESCRIPTION	ACRES	%	CSR2	CPI	NCCPI	CAP
69C	Clearfield silty clay loam, dissected till plain, 5 to 9 percent slopes	45.37	29.16	59.0	0	75	3w
570C	Nira silty clay loam, dissected till plain, 5 to 9 percent slopes	45.37	29.16	84.0	0	93	3e
5B	Colo-Ackmore complex, 0 to 5 percent slopes	18.1	11.63	75.0	0	85	2w
222C2	Clarinda silty clay loam, 5 to 9 percent slopes, eroded	18.04	11.59	38.0	0	54	4w
368B	Macksburg silty clay loam, 2 to 5 percent slopes	15.16	9.74	89.0	0	88	2e
570C2	Nira silty clay loam, dissected till plain, 5 to 9 percent slopes, eroded	5.41	3.48	81.0	0	87	3e
370B	Sharpsburg silty clay loam, 2 to 5 percent slopes	3.7	2.38	91.0	0	91	2e
222C	Clarinda silty clay loam, 5 to 9 percent slopes	3.27	2.1	36.0	0	61	4w
822C	Lamoni silty clay loam, 5 to 9 percent slopes	1.19	0.76	42.0	0	76	3e
TOTALS		155.6 1(*)	100%	69.56	-	80.76	2.9









(*) Total acres may differ in the second decimal compared to the sum of each acreage soil. This is due to a round error because we only show the acres of each soil with two decimal.

Capability Legend

Increased Limitations and Hazards

Decreased Adaptability and Freedom of Choice Users

Land, Capability

								
	1	2	3	4	5	6	7	8
'Wild Life'	•	•	•	•	•	•	•	•
Forestry	•	•	•	•	•	•	•	
Limited	•	•	•	•	•	•	•	
Moderate	•	•	•	•	•	•		
Intense	•	•	•	•	•			
Limited	•	•	•	•				
Moderate	•	•	•					
Intense	•	•						
Very Intense	•							

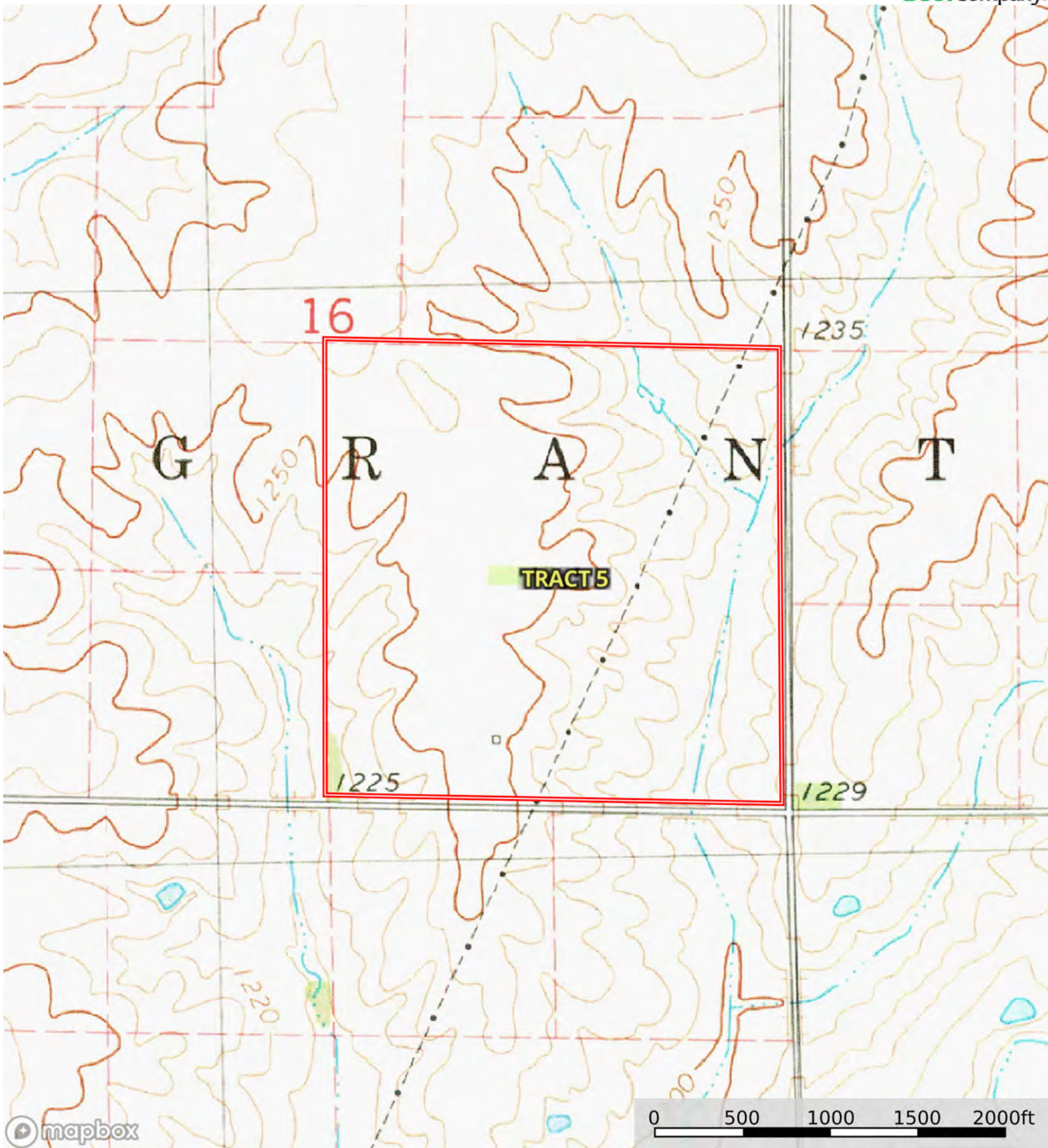
Grazing Cultivation

(c) climatic limitations (e) susceptibility to erosion

(s) soil limitations within the rooting zone (w) excess of water

A-31581

Adams County, Taylor County, Union County, Iowa, 1522.51 AC +/-



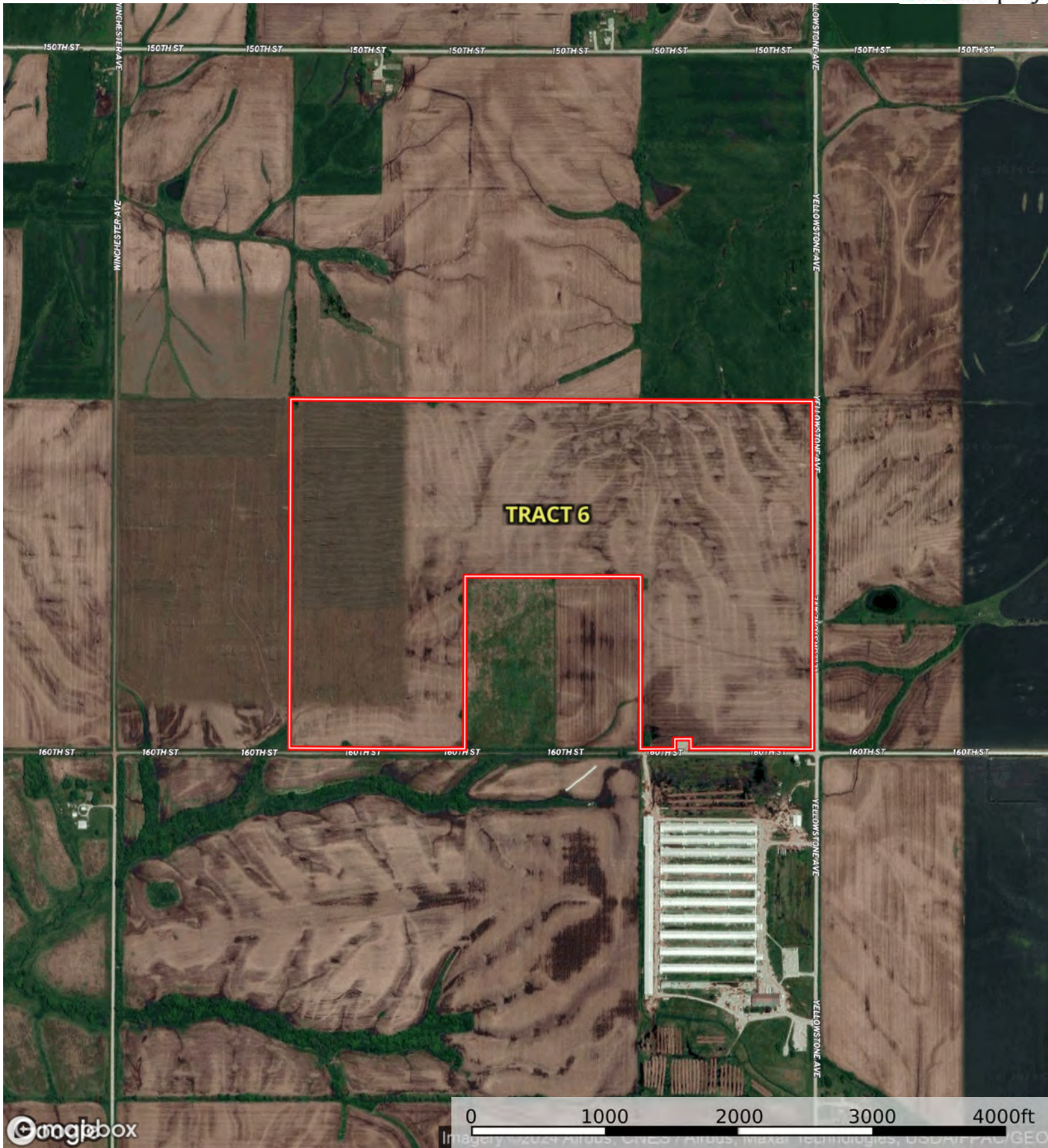
Boundary



The information contained herein was obtained from sources deemed to be reliable. Land id™ Services makes no warranties or guarantees as to the completeness or accuracy thereof.

A-31581

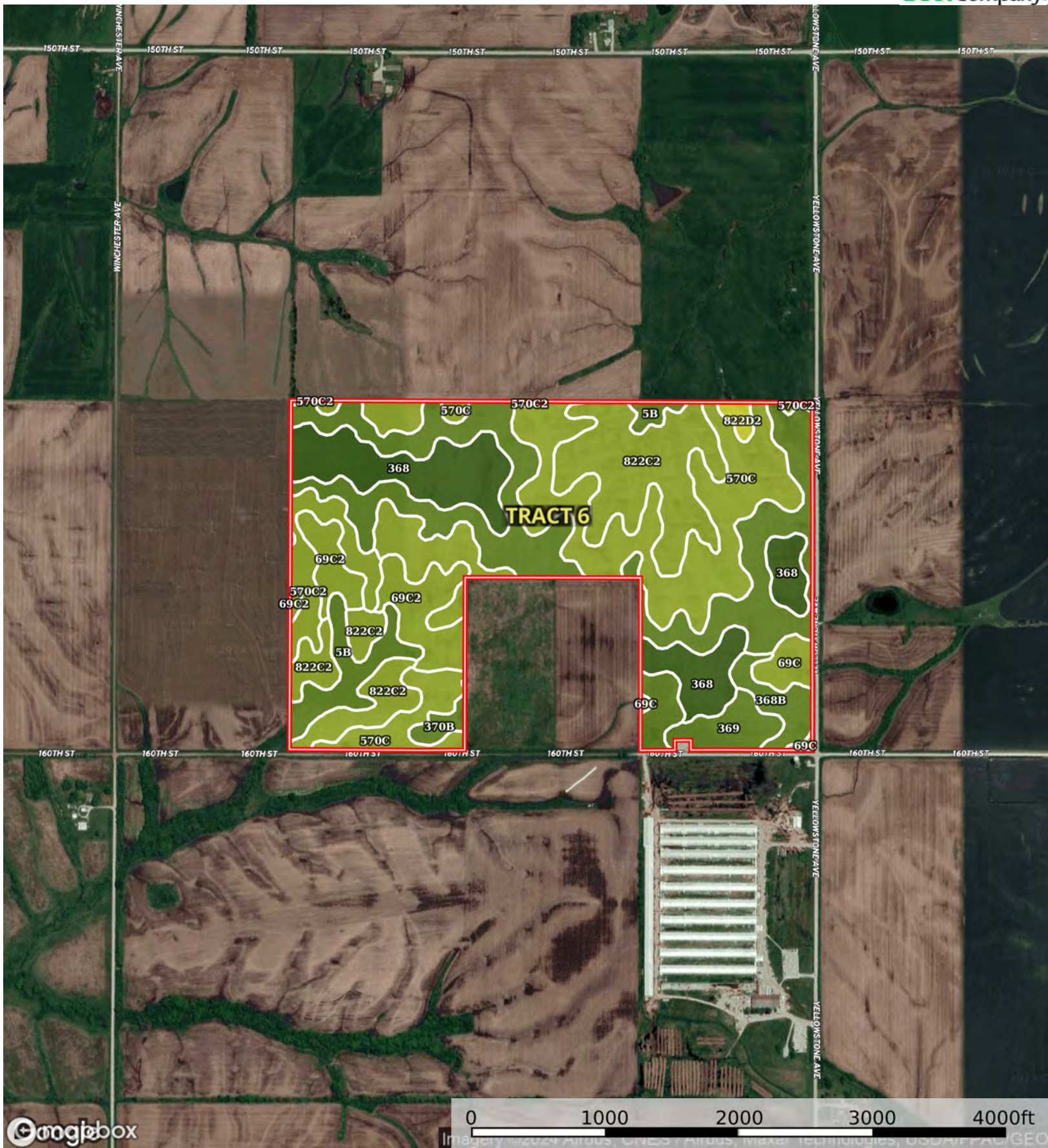
Adams County, Taylor County, Union County, Iowa, 1522.51 AC +/-



Boundary



The information contained herein was obtained from sources deemed to be reliable. Land id™ Services makes no warranties or guarantees as to the completeness or accuracy thereof.



Boundary

| Boundary 195.9 ac

SOIL CODE	SOIL DESCRIPTION	ACRES	%	CSR2	CPI	NCCPI	CAP
570C	Nira silty clay loam, dissected till plain, 5 to 9 percent slopes	49.1	25.06	84.0	0	93	3e
370B	Sharpsburg silty clay loam, 2 to 5 percent slopes	41.73	21.3	91.0	0	91	2e
822C2	Lamoni silty clay loam, 5 to 9 percent slopes, eroded	32.17	16.42	32.0	0	60	3e
368	Macksburg silty clay loam, 0 to 2 percent slopes	25.42	12.98	93.0	0	88	1
69C2	Clearfield silty clay loam, dissected till plain, 5 to 9 percent slopes, eroded	12.75	6.51	56.0	0	66	3w
5B	Colo-Ackmore complex, 0 to 5 percent slopes	8.7	4.44	75.0	0	85	2w
570C2	Nira silty clay loam, dissected till plain, 5 to 9 percent slopes, eroded	8.16	4.17	81.0	0	87	3e
368B	Macksburg silty clay loam, 2 to 5 percent slopes	7.93	4.05	89.0	0	88	2e
369	Winterset silty clay loam, 0 to 2 percent slopes	5.23	2.67	83.0	0	80	2w
69C	Clearfield silty clay loam, dissected till plain, 5 to 9 percent slopes	3.55	1.81	59.0	0	75	3w
822D2	Lamoni silty clay loam, 9 to 14 percent slopes, eroded	1.16	0.59	10.0	0	58	4e
TOTALS		195.9(*)	100%	75.06	-	83.06	2.42









(*) Total acres may differ in the second decimal compared to the sum of each acreage soil. This is due to a round error because we only show the acres of each soil with two decimal.

Capability Legend

Increased Limitations and Hazards

Decreased Adaptability and Freedom of Choice Users

Land, Capability

								
	1	2	3	4	5	6	7	8
'Wild Life'	•	•	•	•	•	•	•	•
Forestry	•	•	•	•	•	•	•	
Limited	•	•	•	•	•	•	•	
Moderate	•	•	•	•	•	•		
Intense	•	•	•	•	•			
Limited	•	•	•	•				
Moderate	•	•	•					
Intense	•	•						
Very Intense	•							

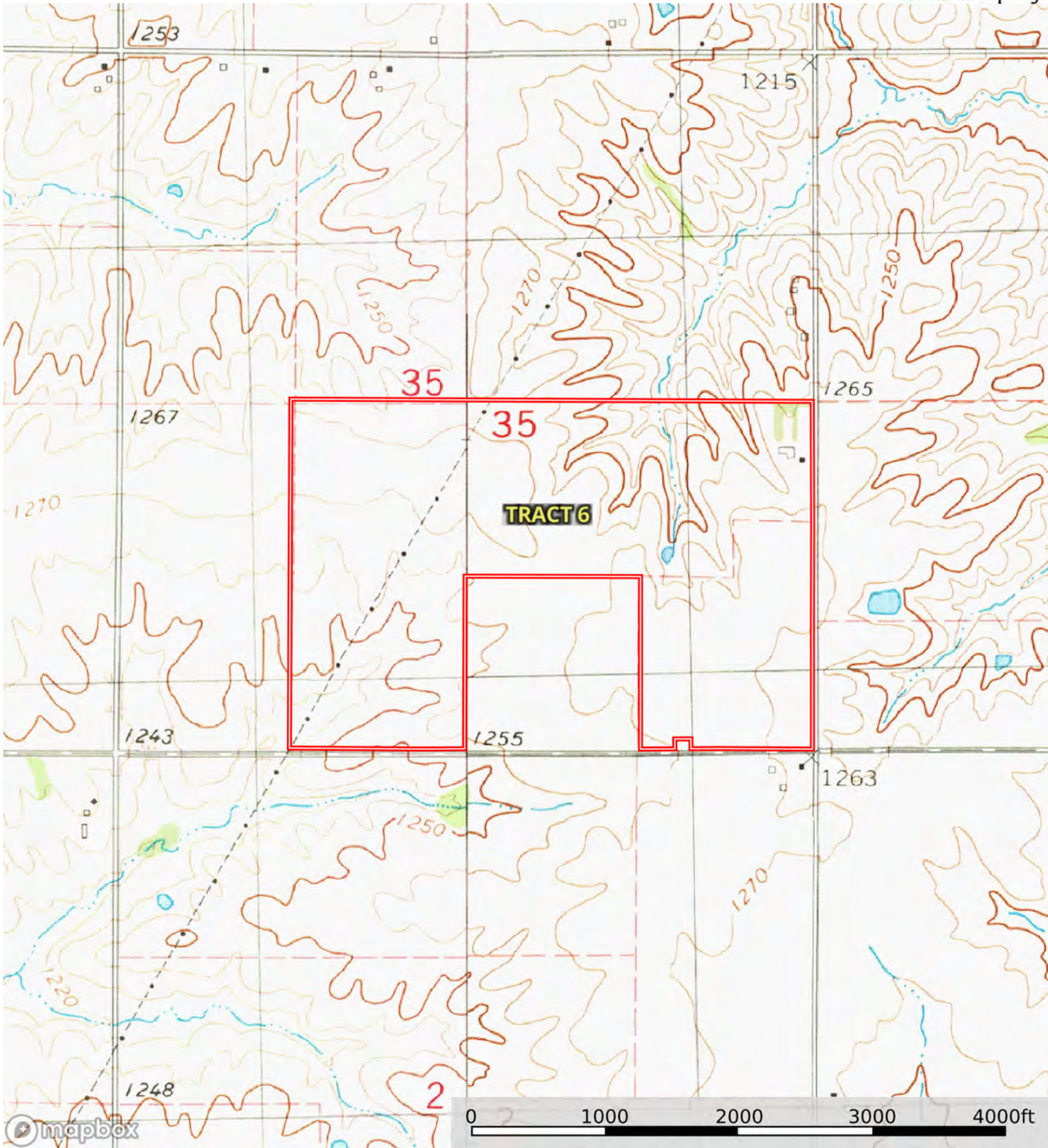
Grazing Cultivation

(c) climatic limitations (e) susceptibility to erosion

(s) soil limitations within the rooting zone (w) excess of water

A-31581

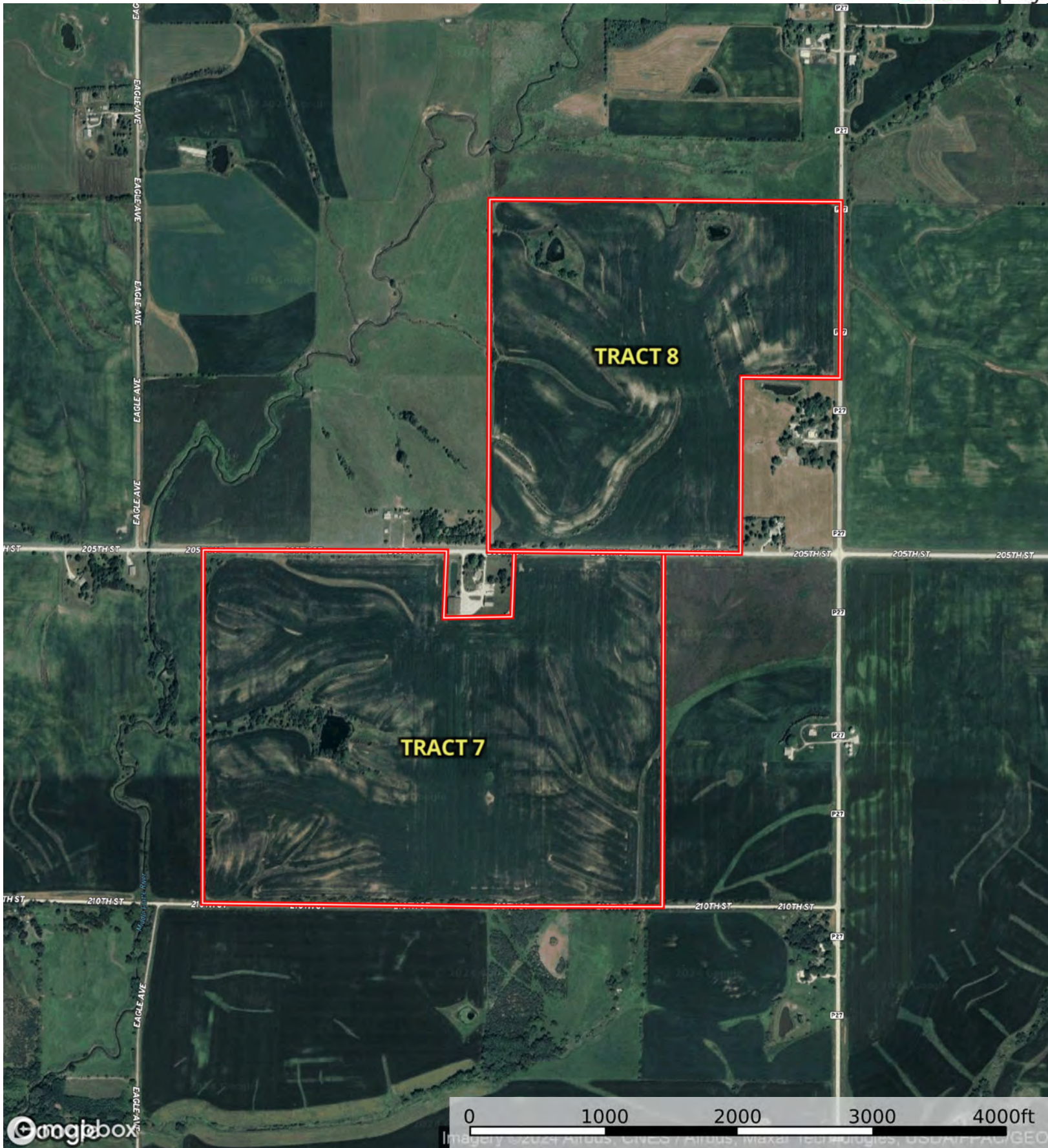
Adams County, Taylor County, Union County, Iowa, 1522.51 AC +/-



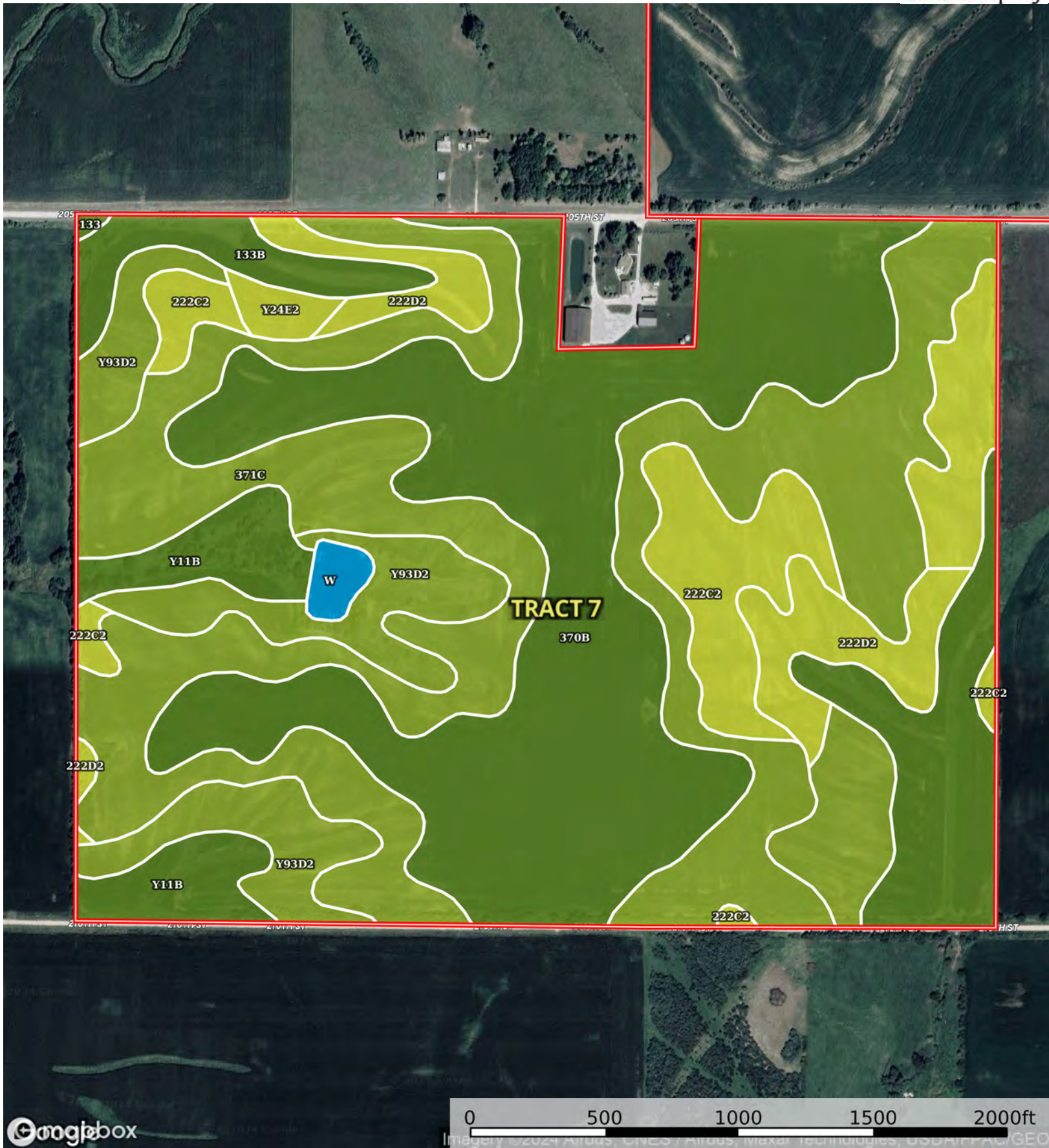
Boundary



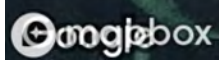
The information contained herein was obtained from sources deemed to be reliable. Land id™ Services makes no warranties or guarantees as to the completeness or accuracy thereof.



Boundary



Boundary



0 500 1000 1500 2000ft



The information contained herein was obtained from sources deemed to be reliable. Land id™ Services makes no warranties or guarantees as to the completeness or accuracy thereof.

| Boundary 203.76 ac

SOIL CODE	SOIL DESCRIPTION	ACRES	%	CSR2	CPI	NCCPI	CAP
370B	Sharpsburg silty clay loam, 2 to 5 percent slopes	62.52	30.69	91.0	0	91	2e
371C	Nira-Sharpsburg silty clay loams, 5 to 9 percent slopes	62.11	30.48	88.0	0	92	3e
Y93D2	Shelby-Adair clay loams, dissected till plain, 9 to 14 percent slopes, eroded	22.36	10.97	35.0	0	67	3e
Y11B	Colo, occasionally flooded-Ely silty clay loams, dissected till plain, 2 to 5 percent slopes	20.73	10.17	80.0	0	87	2w
222C2	Clarinda silty clay loam, 5 to 9 percent slopes, moderately eroded	17.69	8.68	28.0	0	52	4w
222D2	Clarinda silty clay loam, dissected till plain, 9 to 14 percent slopes, eroded	10.04	4.93	17.0	0	51	4e
133B	Colo silty clay loam, dissected till plain, 2 to 5 percent slopes, occasionally flooded	5.37	2.64	74.0	0	82	2w
Y24E2	Shelby clay loam, dissected till plain, 14 to 18 percent slopes, eroded	1.51	0.74	35.0	0	71	4e
W	Water	1.24	0.61	-	0	-	-
133	Colo silty clay loam, deep loess, 0 to 2 percent slopes, occasionally flooded	0.19	0.09	78.0	0	81	2w
TOTALS		203.76(*)	100%	72.28	-	81.97	2.71









(*) Total acres may differ in the second decimal compared to the sum of each acreage soil. This is due to a round error because we only show the acres of each soil with two decimal.

Capability Legend

Increased Limitations and Hazards

Decreased Adaptability and Freedom of Choice Users

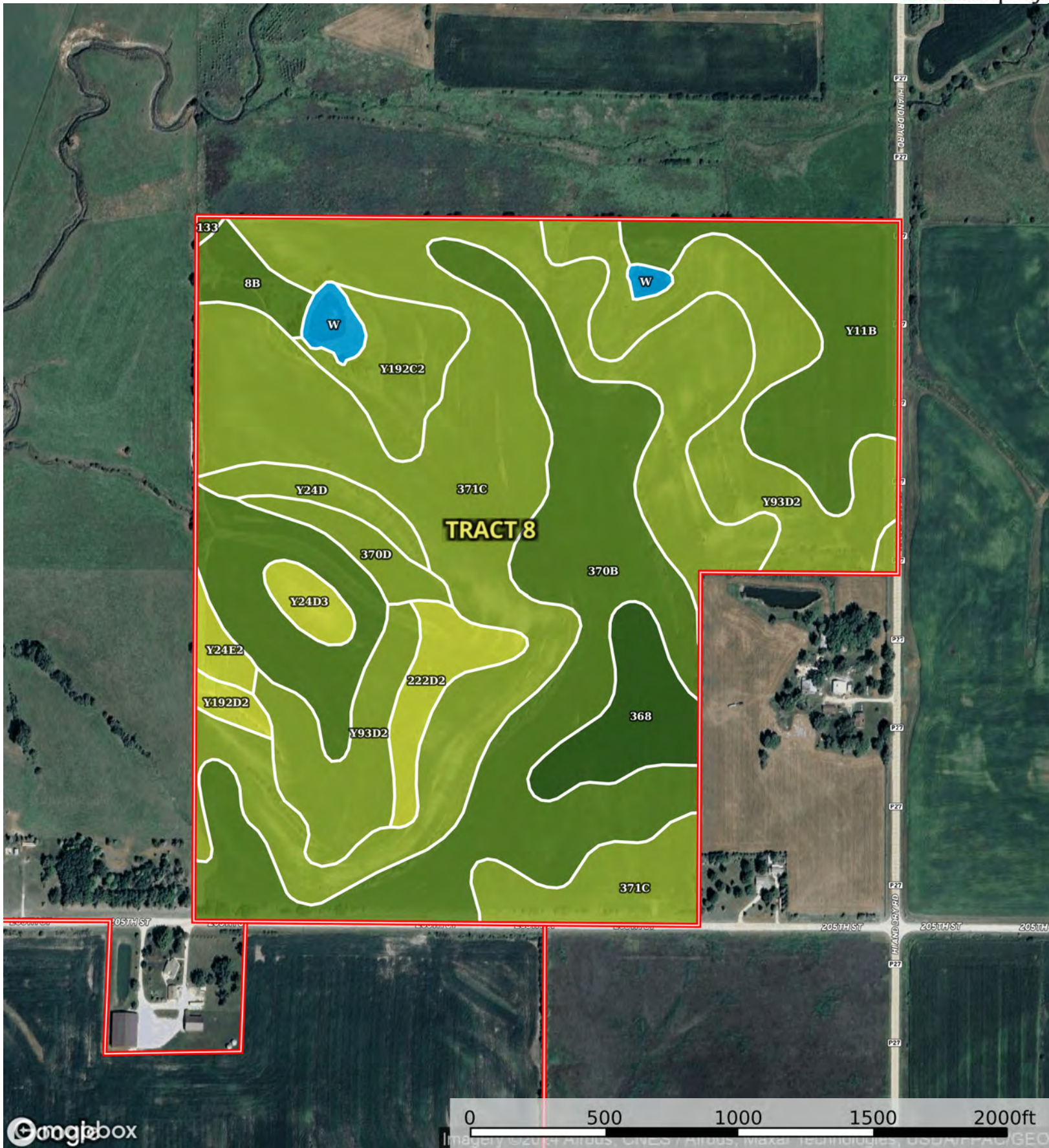
Land, Capability

								
	1	2	3	4	5	6	7	8
'Wild Life'	•	•	•	•	•	•	•	•
Forestry	•	•	•	•	•	•	•	
Limited	•	•	•	•	•	•	•	
Moderate	•	•	•	•	•	•		
Intense	•	•	•	•	•			
Limited	•	•	•	•				
Moderate	•	•	•					
Intense	•	•						
Very Intense	•							

Grazing Cultivation

(c) climatic limitations (e) susceptibility to erosion

(s) soil limitations within the rooting zone (w) excess of water



Boundary



The information contained herein was obtained from sources deemed to be reliable. Land id™ Services makes no warranties or guarantees as to the completeness or accuracy thereof.

| Boundary 136.63 ac

SOIL CODE	SOIL DESCRIPTION	ACRES	%	CSR2	CPI	NCCPI	CAP
371C	Nira-Sharpsburg silty clay loams, 5 to 9 percent slopes	47.84	35.01	88.0	0	92	3e
370B	Sharpsburg silty clay loam, 2 to 5 percent slopes	26.93	19.71	91.0	0	91	2e
Y93D2	Shelby-Adair clay loams, dissected till plain, 9 to 14 percent slopes, eroded	18.27	13.37	35.0	0	67	3e
Y11B	Colo, occasionally flooded-Ely silty clay loams, dissected till plain, 2 to 5 percent slopes	11.27	8.25	80.0	0	87	2w
8B	Judson silty clay loam, dissected till plain, 2 to 5 percent slopes	9.85	7.21	93.0	0	94	2e
368	Macksburg silty clay loam, 0 to 2 percent slopes	5.1	3.73	93.0	0	88	1
Y192C2	Adair clay loam, dissected till plain, 5 to 9 percent slopes, eroded	4.51	3.3	33.0	0	62	3e
222D2	Clarinda silty clay loam, dissected till plain, 9 to 14 percent slopes, eroded	3.32	2.43	17.0	0	51	4e
Y24D	Shelby loam, dissected till plain, 9 to 14 percent slopes	2.35	1.72	52.0	0	83	3e
370D	Sharpsburg silty clay loam, 9 to 14 percent slopes	2.12	1.55	59.0	0	85	3e
Y24D3	Shelby clay loam, dissected till plain, 9 to 14 percent slopes, severely eroded	1.46	1.07	43.0	0	68	4e
W	Water	1.45	1.06	-	0	-	-
Y24E2	Shelby clay loam, dissected till plain, 14 to 18 percent slopes, eroded	1.12	0.82	35.0	0	71	4e
Y192D2	Adair clay loam, dissected till plain, 9 to 14 percent slopes, eroded	0.88	0.64	16.0	0	60	4e
133	Colo silty clay loam, deep loess, 0 to 2 percent slopes, occasionally flooded	0.16	0.12	78.0	0	81	2w
TOTALS		136.63(*)	100%	74.46	-	84.17	2.62









(*) Total acres may differ in the second decimal compared to the sum of each acreage soil. This is due to a round error because we only show the acres of each soil with two decimal.

Capability Legend

Increased Limitations and Hazards

Decreased Adaptability and Freedom of Choice Users

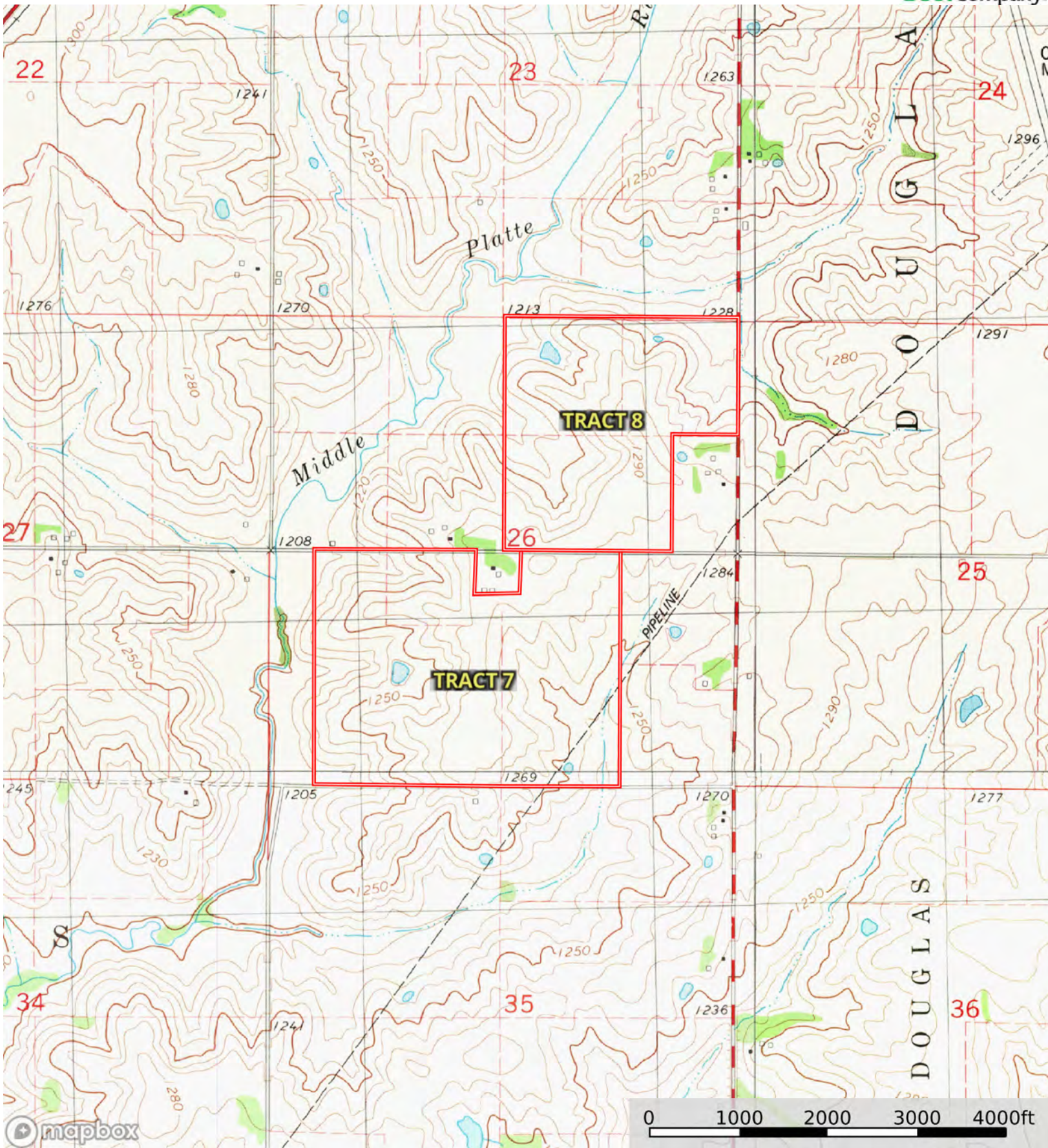
Land, Capability

								
	1	2	3	4	5	6	7	8
'Wild Life'	•	•	•	•	•	•	•	•
Forestry	•	•	•	•	•	•	•	
Limited	•	•	•	•	•	•	•	
Moderate	•	•	•	•	•	•		
Intense	•	•	•	•	•			
Limited	•	•	•	•				
Moderate	•	•	•					
Intense	•	•						
Very Intense	•							

Grazing Cultivation

(c) climatic limitations (e) susceptibility to erosion

(s) soil limitations within the rooting zone (w) excess of water



Boundary

