


A-3399

Cheyenne County, Nebraska, 319.51 AC +/-



 Boundary




The information contained herein was obtained from sources deemed to be reliable. Land id™ Services makes no warranties or guarantees as to the completeness or accuracy thereof.

A-3399

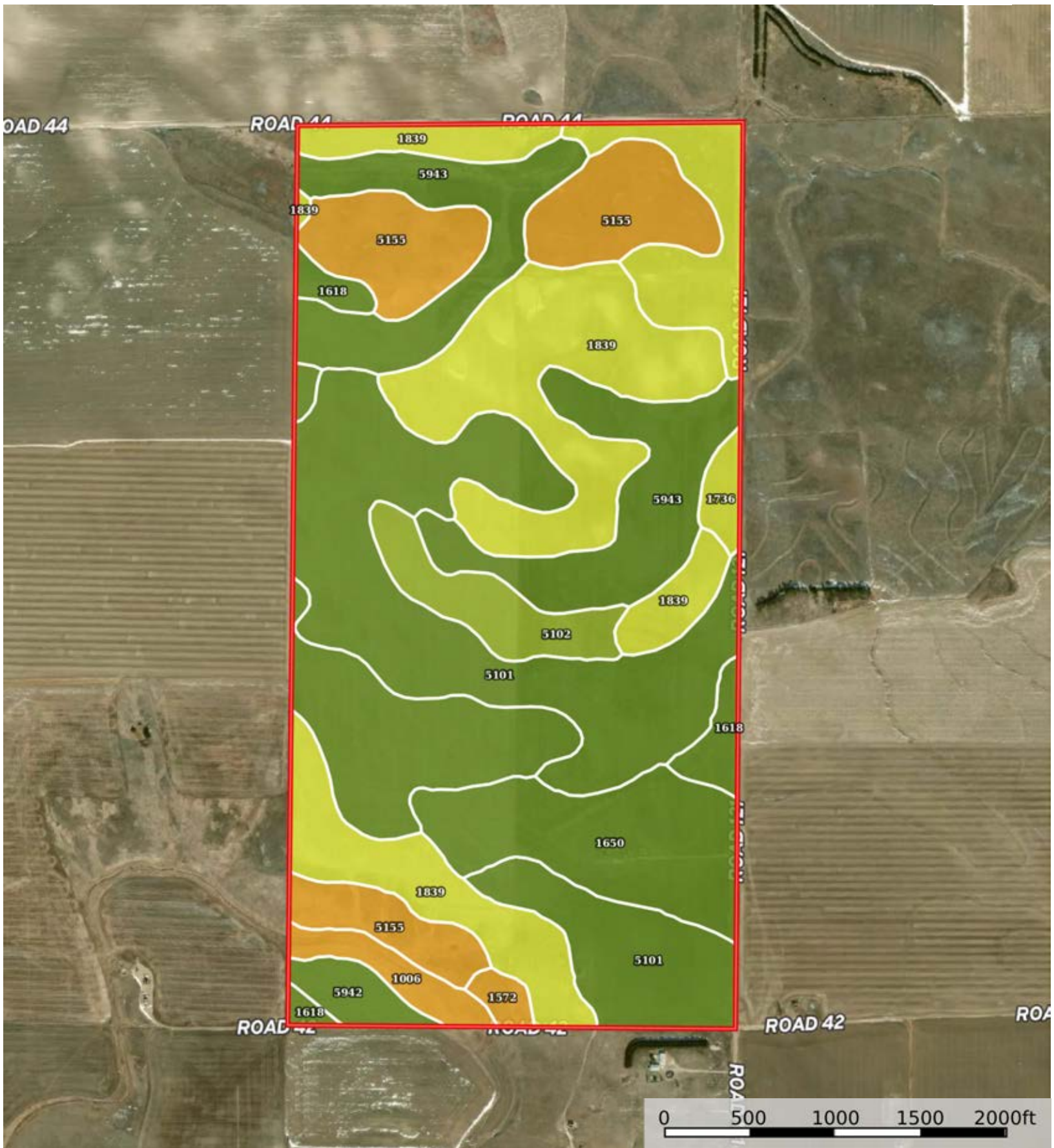
Cheyenne County, Nebraska, 319.51 AC +/-



 Boundary

A-3399

Cheyenne County, Nebraska, 319.51 AC +/-



 Boundary

|  Boundary 319.29 ac

SOIL CODE	SOIL DESCRIPTION	ACRES	%	CPI	NCCPI	CAP
5101	Alliance loam, 1 to 3 percent slopes	74.53	23.34	0	49	2e
1839	Sidney-Canyon complex, 3 to 9 percent slopes	67.76	21.22	0	27	4e
5943	Duroc loam, 1 to 3 percent slopes	44.44	13.92	0	42	2e
5155	Canyon-Bayard complex, 6 to 20 percent slopes	34.38	10.77	0	23	6s
1618	Keith loam, 1 to 3 percent slopes	31.08	9.73	0	55	2e
1650	Kuma loam, 0 to 1 percent slopes	26.42	8.27	0	58	2c
1736	Rosebud-Canyon complex, 3 to 9 percent slopes	16.84	5.27	0	24	4e
5102	Alliance loam, 3 to 6 percent slopes	11.32	3.55	0	47	3e
1006	Bankard loamy fine sand, channeled, frequently flooded	5.61	1.76	0	13	6w
5942	Duroc loam, 0 to 1 percent slopes	4.86	1.52	0	61	2c
1572	Dix gravelly loam, 3 to 9 percent slopes	2.05	0.64	0	17	6s
TOTALS		319.29(*)	100%	-	39.84	3.09









(*) Total acres may differ in the second decimal compared to the sum of each acreage soil. This is due to a round error because we only show the acres of each soil with two decimal.

Capability Legend

Increased Limitations and Hazards

Decreased Adaptability and Freedom of Choice Users

Land, Capability

								
	1	2	3	4	5	6	7	8
'Wild Life'	•	•	•	•	•	•	•	•
Forestry	•	•	•	•	•	•	•	
Limited	•	•	•	•	•	•	•	
Moderate	•	•	•	•	•	•		
Intense	•	•	•	•	•			
Limited	•	•	•	•				
Moderate	•	•	•					
Intense	•	•						
Very Intense	•							

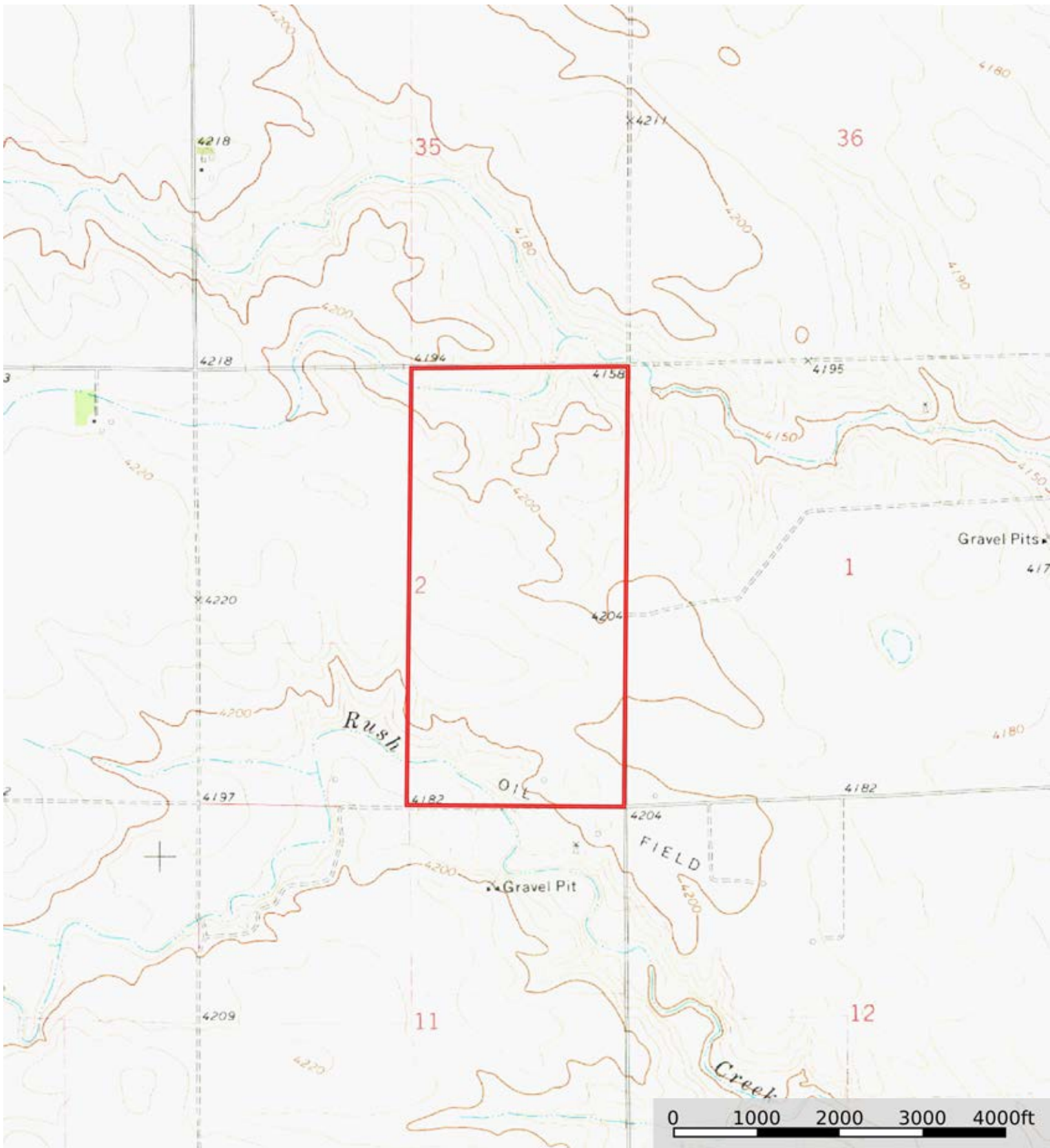
Grazing Cultivation

(c) climatic limitations (e) susceptibility to erosion

(s) soil limitations within the rooting zone (w) excess of water

A-3399

Cheyenne County, Nebraska, 319.51 AC +/-



Boundary