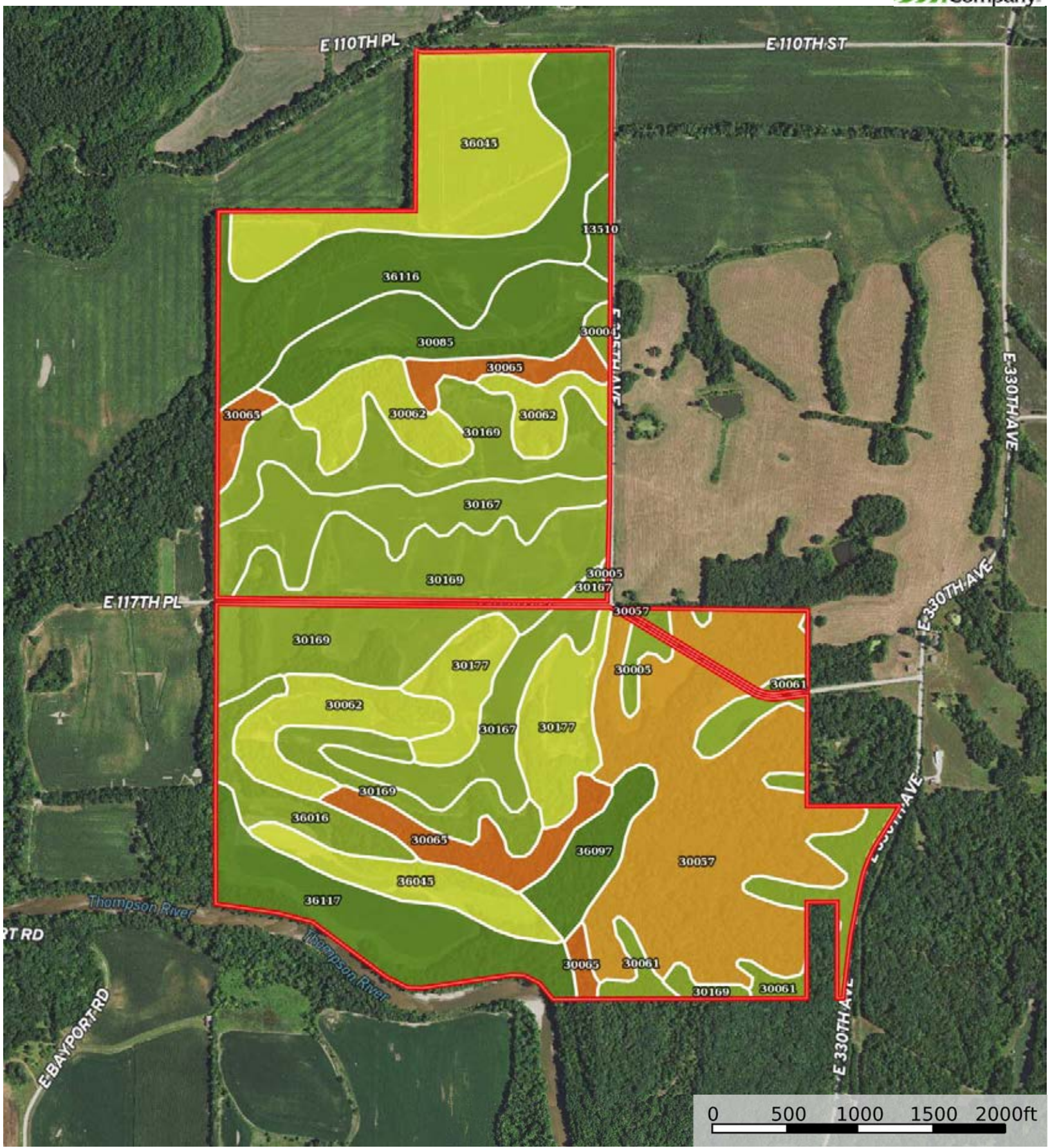


 Boundary



 Boundary

|  All Polygons 438.48 ac

SOIL CODE	SOIL DESCRIPTION	ACRES	%	CPI	NCCPI	CAP
30169	Pershing silt loam, 5 to 9 percent slopes	82.05	18.71	0	77	3e
30057	Gara loam, 14 to 18 percent slopes	70.45	16.07	0	68	6e
36045	Wabash silty clay, 0 to 2 percent slopes, frequently flooded	45.29	10.33	0	15	4w
36116	Zook silty clay loam, heavy till, 0 to 2 percent slopes, occasionally flooded	40.28	9.19	0	75	2w
30167	Pershing silt loam, 2 to 5 percent slopes	36.52	8.33	0	77	3e
30062	Gara loam, 9 to 14 percent slopes	30.36	6.92	0	74	4e
36117	Nodaway silt loam, heavy till, 0 to 2 percent slopes, occasionally flooded	26.03	5.94	0	89	2w
30085	Grundy silt loam, 2 to 5 percent slopes	22.74	5.19	0	74	2e
30177	Pershing silty clay loam, 5 to 9 percent slopes, severely eroded	21.97	5.01	0	71	4e
30065	Gasconade flaggy silty clay loam, 14 to 35 percent slopes	20.88	4.76	0	8	7s
30061	Gara loam, 5 to 9 percent slopes	15.83	3.61	0	80	3e
36016	Humeston silt loam, 0 to 2 percent slopes, occasionally flooded	10.01	2.28	0	89	3w
36097	Zook silty clay loam, 1 to 4 percent slopes, occasionally flooded	9.17	2.09	0	87	2w
30005	Adair loam, 3 to 9 percent slopes	3.27	0.75	0	73	3e
13510	Colo silty clay loam, heavy till, 0 to 2 percent slopes, occasionally flooded	2.37	0.54	0	95	2w
30004	Adair clay loam, heavy till, 5 to 9 percent slopes, moderately eroded	1.26	0.29	0	69	3e
TOTALS		438.48(*)	100%	-	66.37	3.67

(*) Total acres may differ in the second decimal compared to the sum of each acreage soil. This is due to a round error because we only show the acres of each soil with two decimal.

|  Boundary 197.88 ac

SOIL CODE	SOIL DESCRIPTION	ACRES	%	CPI	NCCPI	CAP
30169	Pershing silt loam, 5 to 9 percent slopes	48.64	24.58	0	77	3e
36116	Zook silty clay loam, heavy till, 0 to 2 percent slopes, occasionally flooded	40.28	20.36	0	75	2w
36045	Wabash silty clay, 0 to 2 percent slopes, frequently flooded	33.94	17.15	0	15	4w
30085	Grundy silt loam, 2 to 5 percent slopes	22.74	11.49	0	74	2e
30167	Pershing silt loam, 2 to 5 percent slopes	22.56	11.4	0	77	3e
30062	Gara loam, 9 to 14 percent slopes	17.2	8.69	0	74	4e
30065	Gasconade flaggy silty clay loam, 14 to 35 percent slopes	8.75	4.42	0	8	7s
13510	Colo silty clay loam, heavy till, 0 to 2 percent slopes, occasionally flooded	2.37	1.2	0	95	2w
30004	Adair clay loam, heavy till, 5 to 9 percent slopes, moderately eroded	1.26	0.64	0	69	3e

30005	Adair loam, 3 to 9 percent slopes	0.14	0.07	0	73	3e
TOTALS		197.8 8(*)	100%	-	62.47	3.1

(*) Total acres may differ in the second decimal compared to the sum of each acreage soil. This is due to a round error because we only show the acres of each soil with two decimal.

| Boundary 230.34 ac

SOIL CODE	SOIL DESCRIPTION	ACRES	%	CPI	NCCPI	CAP
30057	Gara loam, 14 to 18 percent slopes	61.9	26.87	0	68	6e
30169	Pershing silt loam, 5 to 9 percent slopes	33.41	14.51	0	77	3e
36117	Nodaway silt loam, heavy till, 0 to 2 percent slopes, occasionally flooded	26.03	11.3	0	89	2w
30177	Pershing silty clay loam, 5 to 9 percent slopes, severely eroded	21.97	9.54	0	71	4e
30061	Gara loam, 5 to 9 percent slopes	15.07	6.54	0	80	3e
30167	Pershing silt loam, 2 to 5 percent slopes	13.96	6.06	0	77	3e
30062	Gara loam, 9 to 14 percent slopes	13.16	5.71	0	74	4e
30065	Gasconade flaggy silty clay loam, 14 to 35 percent slopes	12.13	5.27	0	8	7s
36045	Wabash silty clay, 0 to 2 percent slopes, frequently flooded	11.35	4.93	0	15	4w
36016	Humeston silt loam, 0 to 2 percent slopes, occasionally flooded	10.01	4.35	0	89	3w
36097	Zook silty clay loam, 1 to 4 percent slopes, occasionally flooded	9.17	3.98	0	87	2w
30005	Adair loam, 3 to 9 percent slopes	2.18	0.95	0	73	3e
TOTALS		230.3 4(*)	100%	-	69.59	4.07

(*) Total acres may differ in the second decimal compared to the sum of each acreage soil. This is due to a round error because we only show the acres of each soil with two decimal.

| Boundary 10.26 ac

SOIL CODE	SOIL DESCRIPTION	ACRES	%	CPI	NCCPI	CAP
30057	Gara loam, 14 to 18 percent slopes	8.55	83.41	0	68	6e
30005	Adair loam, 3 to 9 percent slopes	0.95	9.27	0	73	3e
30061	Gara loam, 5 to 9 percent slopes	0.76	7.41	0	80	3e
TOTALS		10.26(*)	100%	-	69.42	5.5









(*) Total acres may differ in the second decimal compared to the sum of each acreage soil. This is due to a round error because we only show the acres of each soil with two decimal.

Capability Legend

Increased Limitations and Hazards

Decreased Adaptability and Freedom of Choice Users

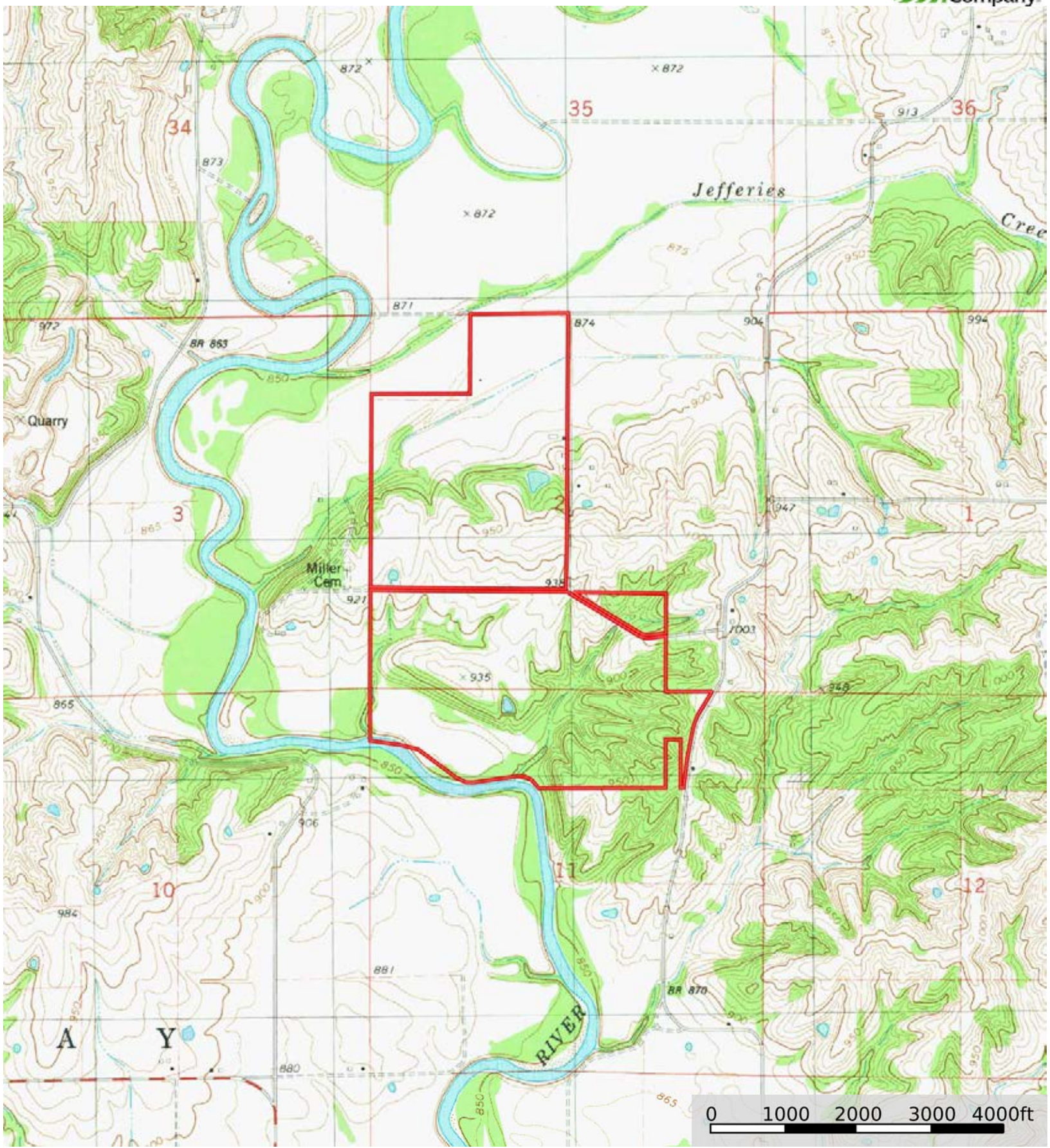
Land, Capability

								
	1	2	3	4	5	6	7	8
'Wild Life'	•	•	•	•	•	•	•	•
Forestry	•	•	•	•	•	•	•	
Limited	•	•	•	•	•	•	•	
Moderate	•	•	•	•	•	•		
Intense	•	•	•	•	•			
Limited	•	•	•	•				
Moderate	•	•	•					
Intense	•	•						
Very Intense	•							

Grazing Cultivation

(c) climatic limitations (e) susceptibility to erosion

(s) soil limitations within the rooting zone (w) excess of water



 Boundary