

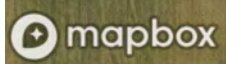
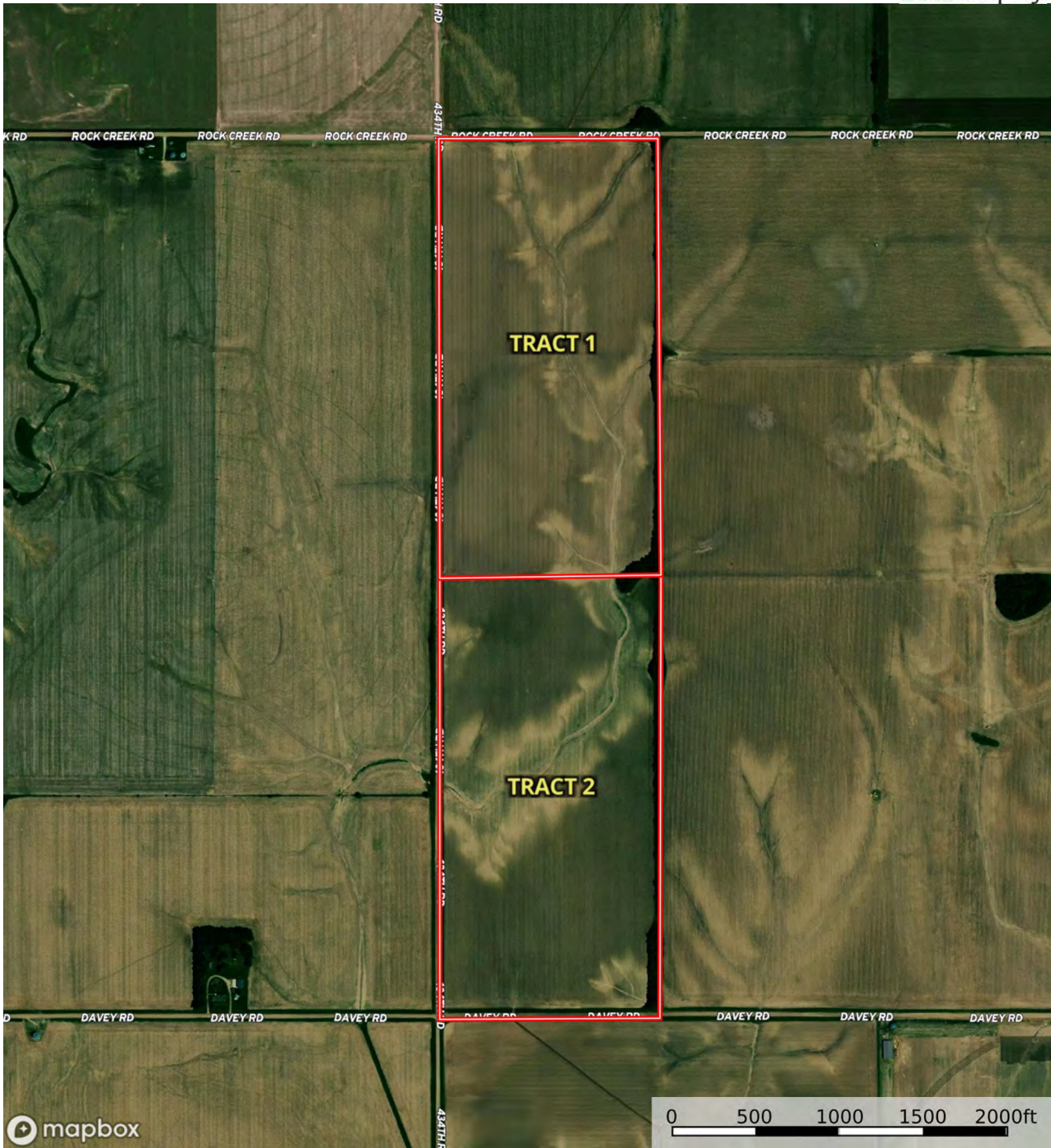


Boundary



L-2500141

Seward County, Nebraska, 160 AC +/-



Boundary

L-2500141

Seward County, Nebraska, 160 AC +/-



Boundary

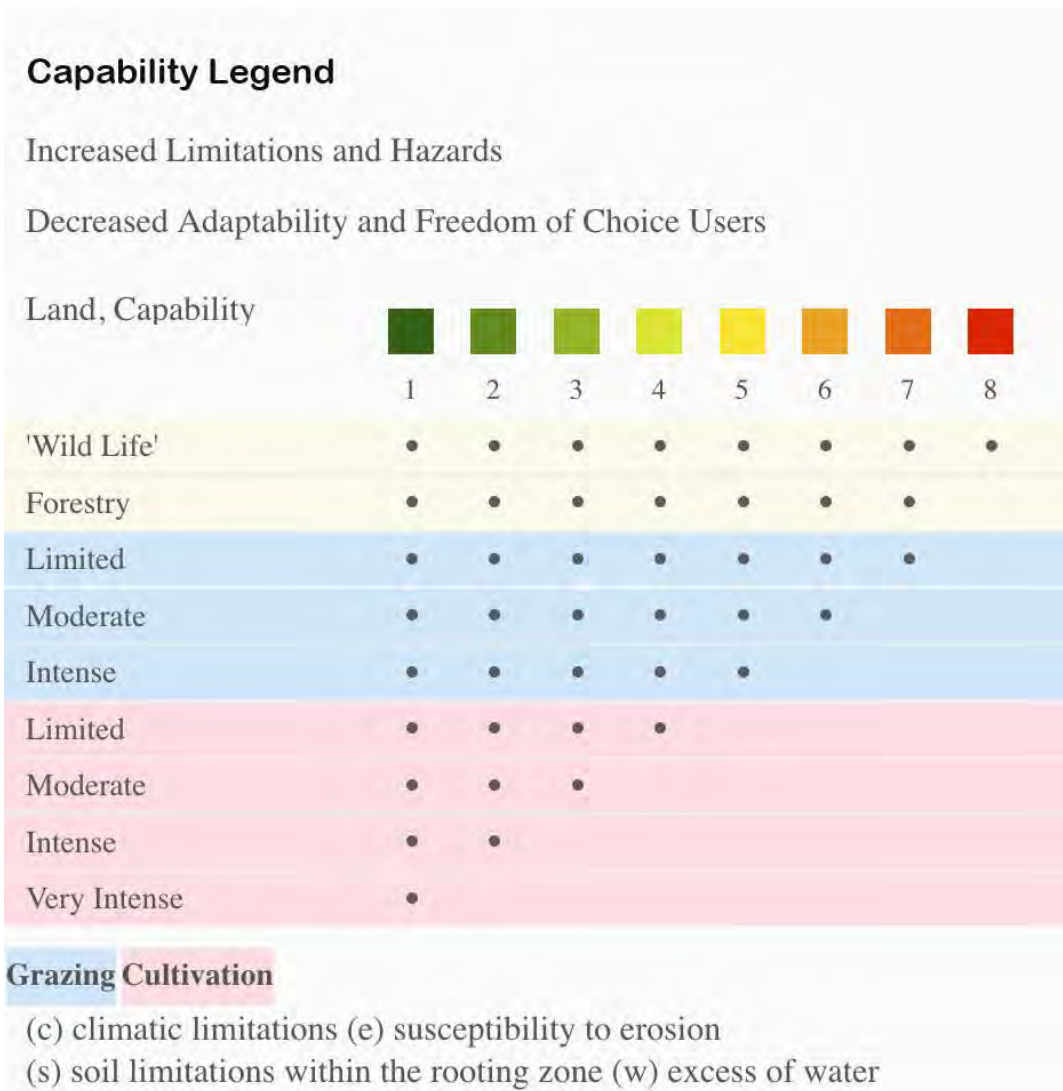


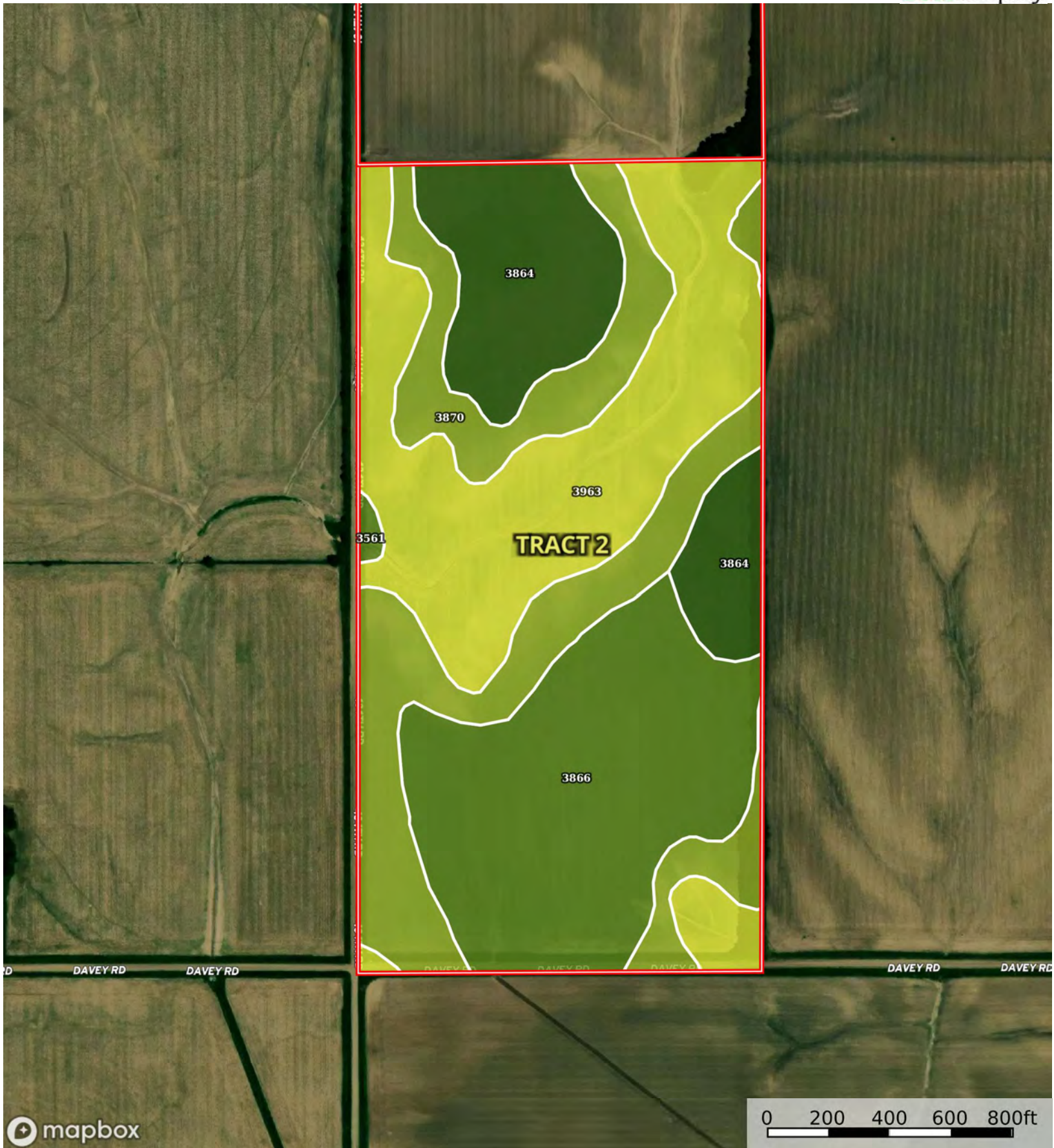
The information contained herein was obtained from sources deemed to be reliable. Land id™ Services makes no warranties or guarantees as to the completeness or accuracy thereof.

| Boundary 79.59 ac

SOIL CODE	SOIL DESCRIPTION	ACRES	%	CPI	NCCPI	CAP
3864	Hastings silt loam, 0 to 1 percent slopes	27.86	35.01	0	69	1
3963	Hastings silty clay loam, 7 to 11 percent slopes, severely eroded	24.59	30.9	0	55	4e
3870	Hastings silty clay loam, 3 to 7 percent slopes, eroded	22.95	28.84	0	58	3e
3866	Hastings silt loam, 1 to 3 percent slopes	4.19	5.27	0	68	2e
TOTALS		79.59(*)	100%	-	61.46	2.56

(*) Total acres may differ in the second decimal compared to the sum of each acreage soil. This is due to a round error because we only show the acres of each soil with two decimal.





| Boundary 80.47 ac

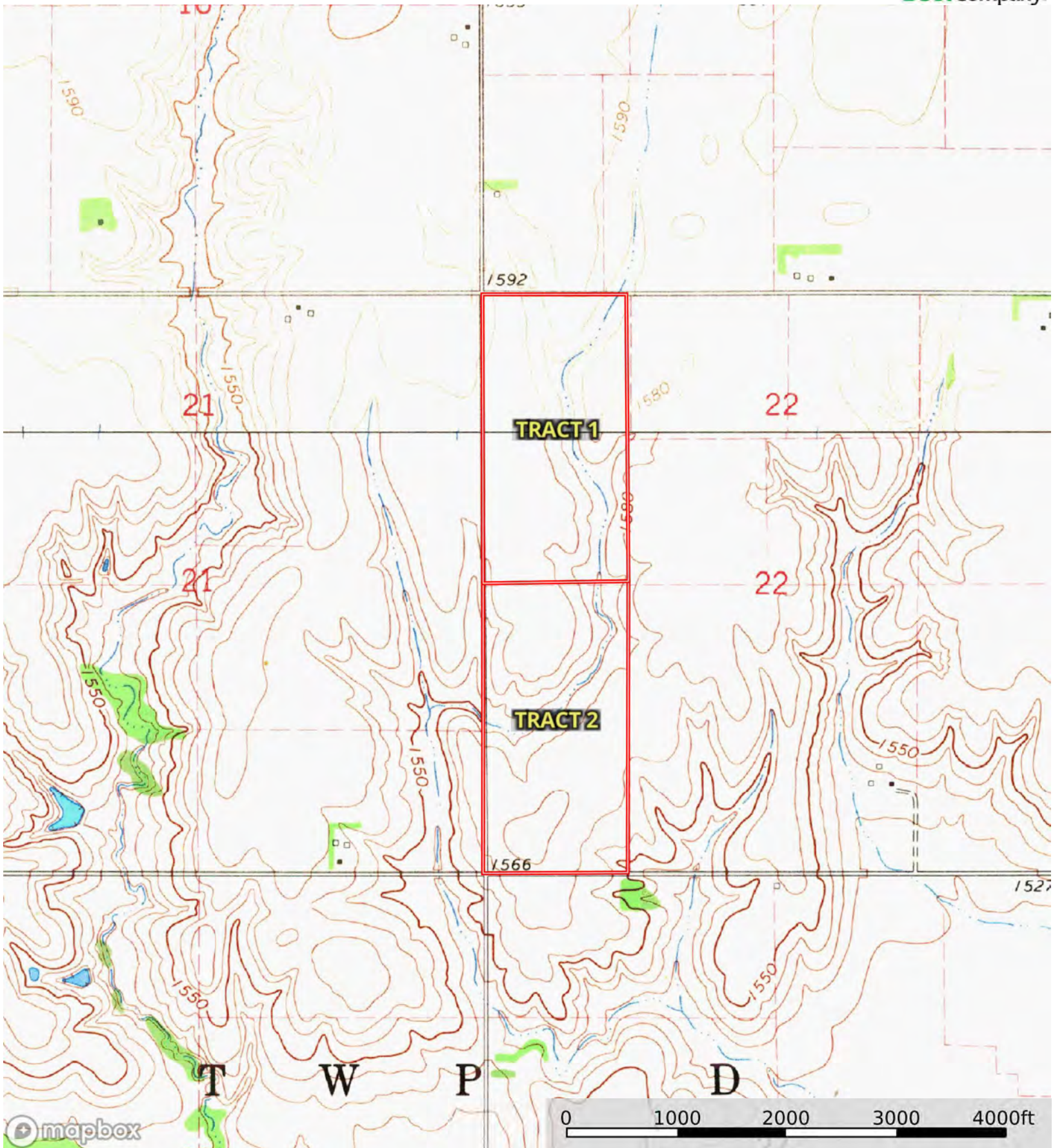
SOIL CODE	SOIL DESCRIPTION	ACRES	%	CPI	NCCPI	CAP
3963	Hastings silty clay loam, 7 to 11 percent slopes, severely eroded	24.14	30.0	0	55	4e
3866	Hastings silt loam, 1 to 3 percent slopes	22.23	27.63	0	68	2e
3870	Hastings silty clay loam, 3 to 7 percent slopes, eroded	21.06	26.17	0	58	3e
3864	Hastings silt loam, 0 to 1 percent slopes	12.7	15.78	0	69	1
3561	Hobbs silt loam, occasionally flooded	0.34	0.42	0	81	2w
TOTALS		80.47(*)	100%	-	61.7	2.7

(*) Total acres may differ in the second decimal compared to the sum of each acreage soil. This is due to a round error because we only show the acres of each soil with two decimal.



L-2500141

Seward County, Nebraska, 160 AC +/-



Boundary



The information contained herein was obtained from sources deemed to be reliable. Land id™ Services makes no warranties or guarantees as to the completeness or accuracy thereof.