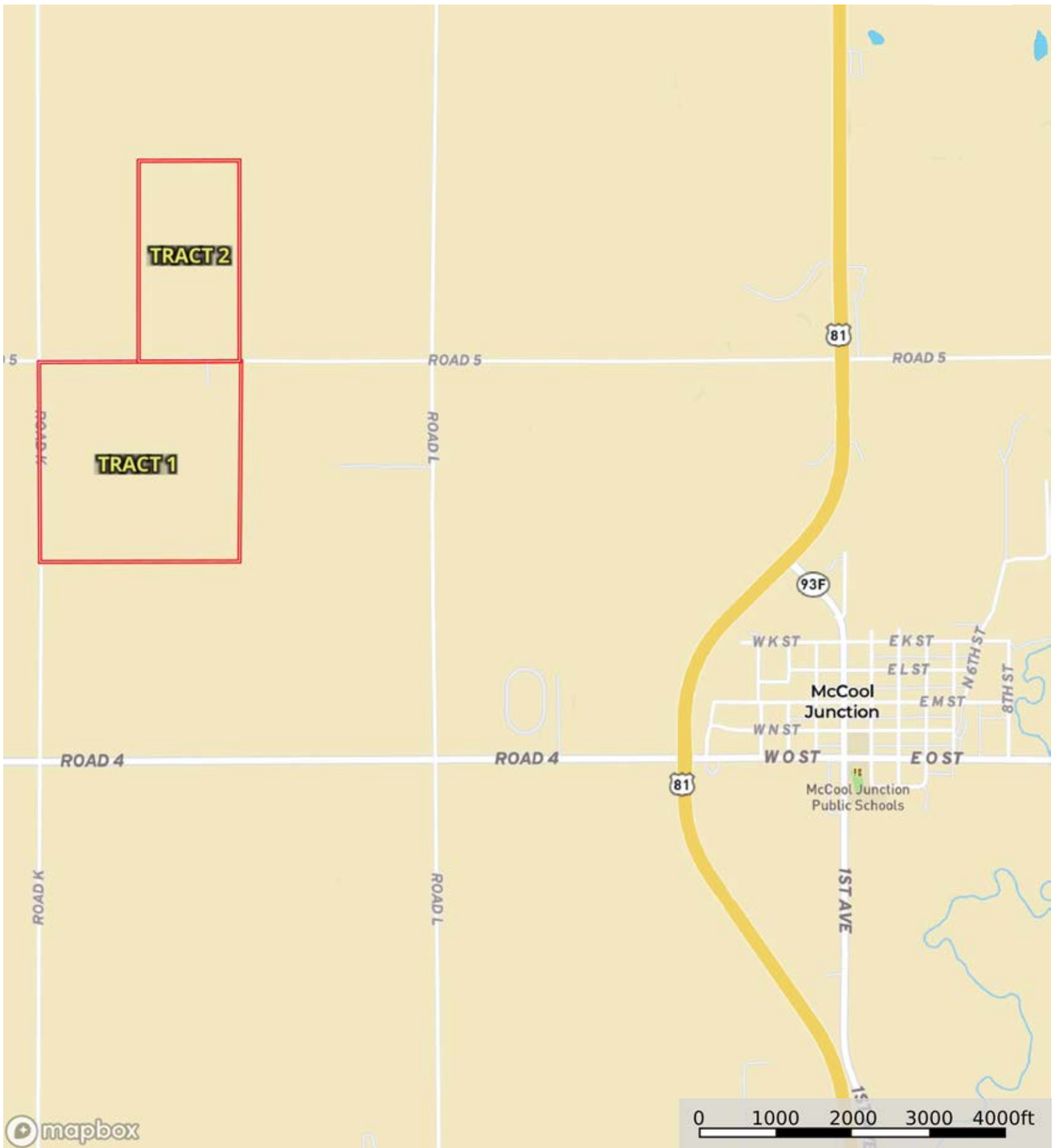


L-2400098

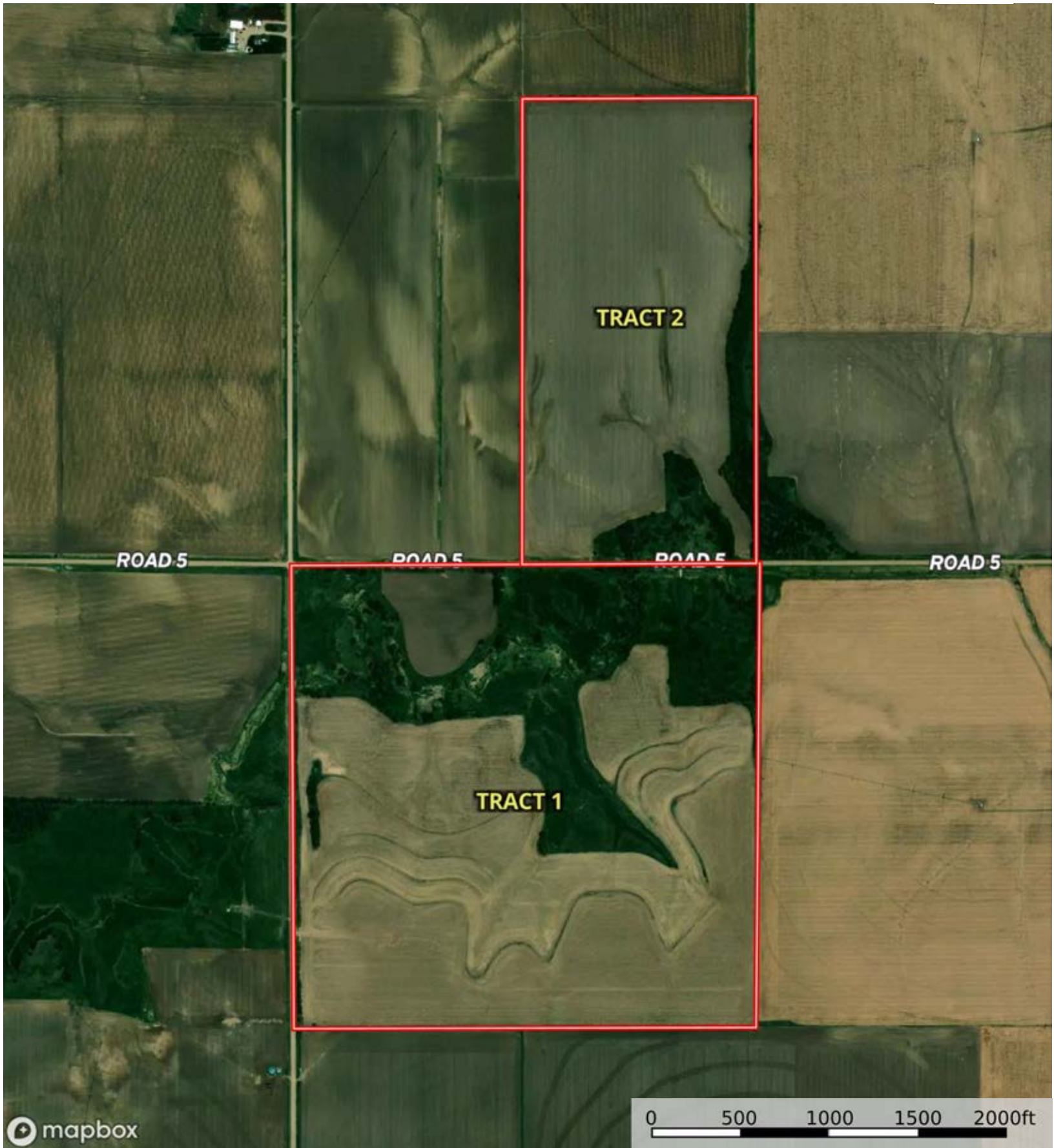
York County, Nebraska, 238.83 AC +/-




Boundary

L-2400098

York County, Nebraska, 238.83 AC +/-



 Boundary

L-2400098

York County, Nebraska, 238.83 AC +/-



mapbox

0 200 400 600 800ft

Boundary



The information contained herein was obtained from sources deemed to be reliable. Land id™ Services makes no warranties or guarantees as to the completeness or accuracy thereof.

|  Boundary 158.66 ac

SOIL CODE	SOIL DESCRIPTION	ACRES	%	CPI	NCCPI	CAP
3870	Hastings silty clay loam, 3 to 7 percent slopes, eroded	67.33	42.44	0	58	3e
3553	Hobbs silt loam, frequently flooded	32.58	20.53	0	54	6w
3864	Hastings silt loam, 0 to 1 percent slopes	30.8	19.41	0	70	1
8870	Hord silt loam, 1 to 3 percent slopes	11.04	6.96	0	80	2e
2836	Uly-Hobbs silt loams, 11 to 30 percent slopes	8.61	5.43	0	61	6e
3962	Hastings silty clay loam, 7 to 11 percent slopes, eroded	4.98	3.14	0	57	4e
8866	Hord silt loam, 0 to 1 percent slopes, warm	2.7	1.7	0	81	2c
3866	Hastings silt loam, 1 to 3 percent slopes	0.62	0.39	0	69	2e
TOTALS		158.6 6(*)	100%	-	61.6	3.33

(*) Total acres may differ in the second decimal compared to the sum of each acreage soil. This is due to a round error because we only show the acres of each soil with two decimal.



L-2400098

York County, Nebraska, 238.83 AC +/-



mapbox

0 200 400 600 800ft

Boundary



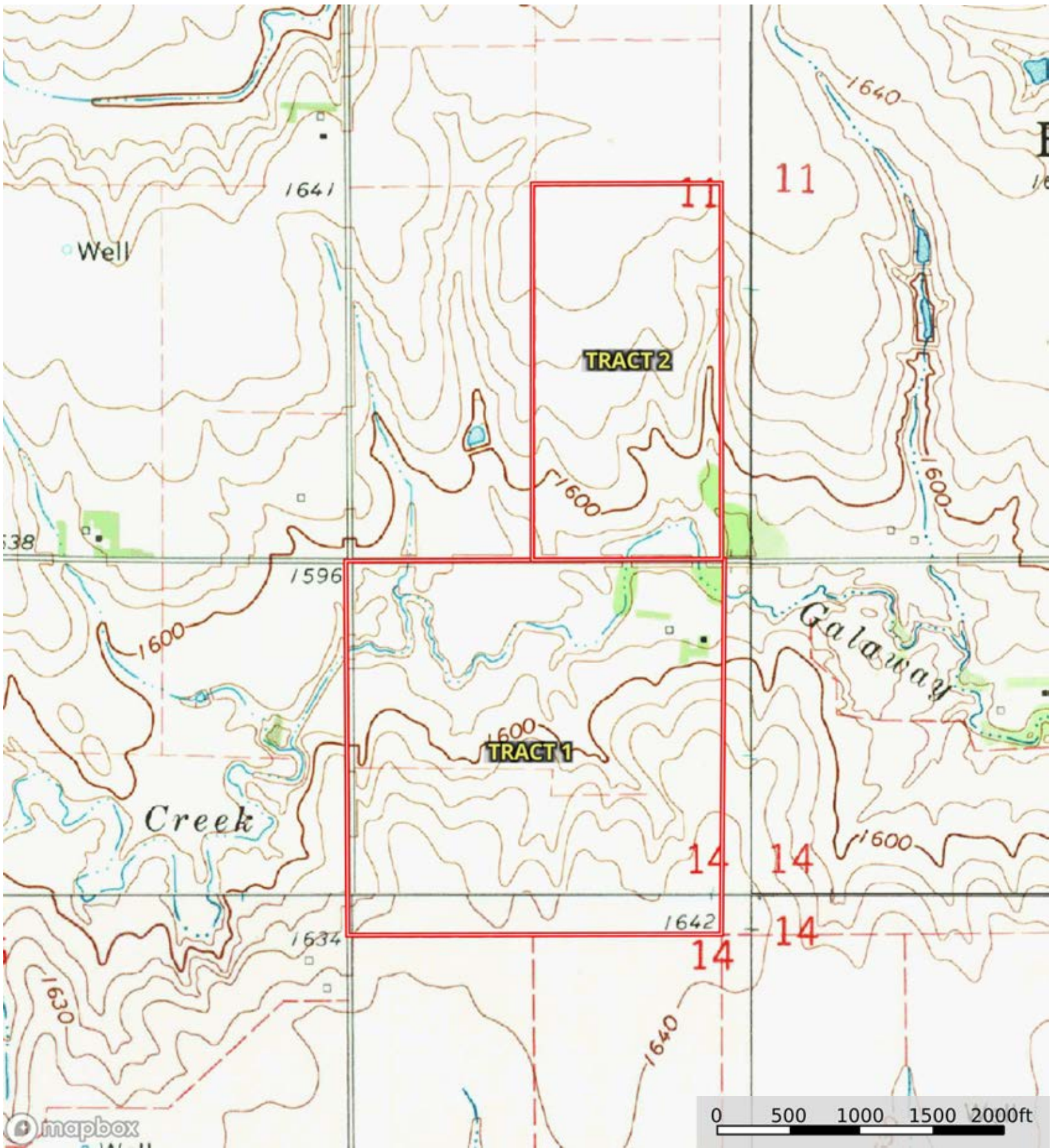
The information contained herein was obtained from sources deemed to be reliable. Land id™ Services makes no warranties or guarantees as to the completeness or accuracy thereof.

|  Boundary 80.02 ac

SOIL CODE	SOIL DESCRIPTION	ACRES	%	CPI	NCCPI	CAP
3870	Hastings silty clay loam, 3 to 7 percent slopes, eroded	29.19	36.48	0	58	3e
3864	Hastings silt loam, 0 to 1 percent slopes	19.9	24.87	0	70	1
3866	Hastings silt loam, 1 to 3 percent slopes	17.51	21.88	0	69	2e
3553	Hobbs silt loam, frequently flooded	6.6	8.25	0	54	6w
2836	Uly-Hobbs silt loams, 11 to 30 percent slopes	5.37	6.71	0	61	6e
8870	Hord silt loam, 1 to 3 percent slopes	1.45	1.81	0	80	2e
TOTALS		80.02(*)	100%	-	63.66	2.71

(*) Total acres may differ in the second decimal compared to the sum of each acreage soil. This is due to a round error because we only show the acres of each soil with two decimal.





Boundary