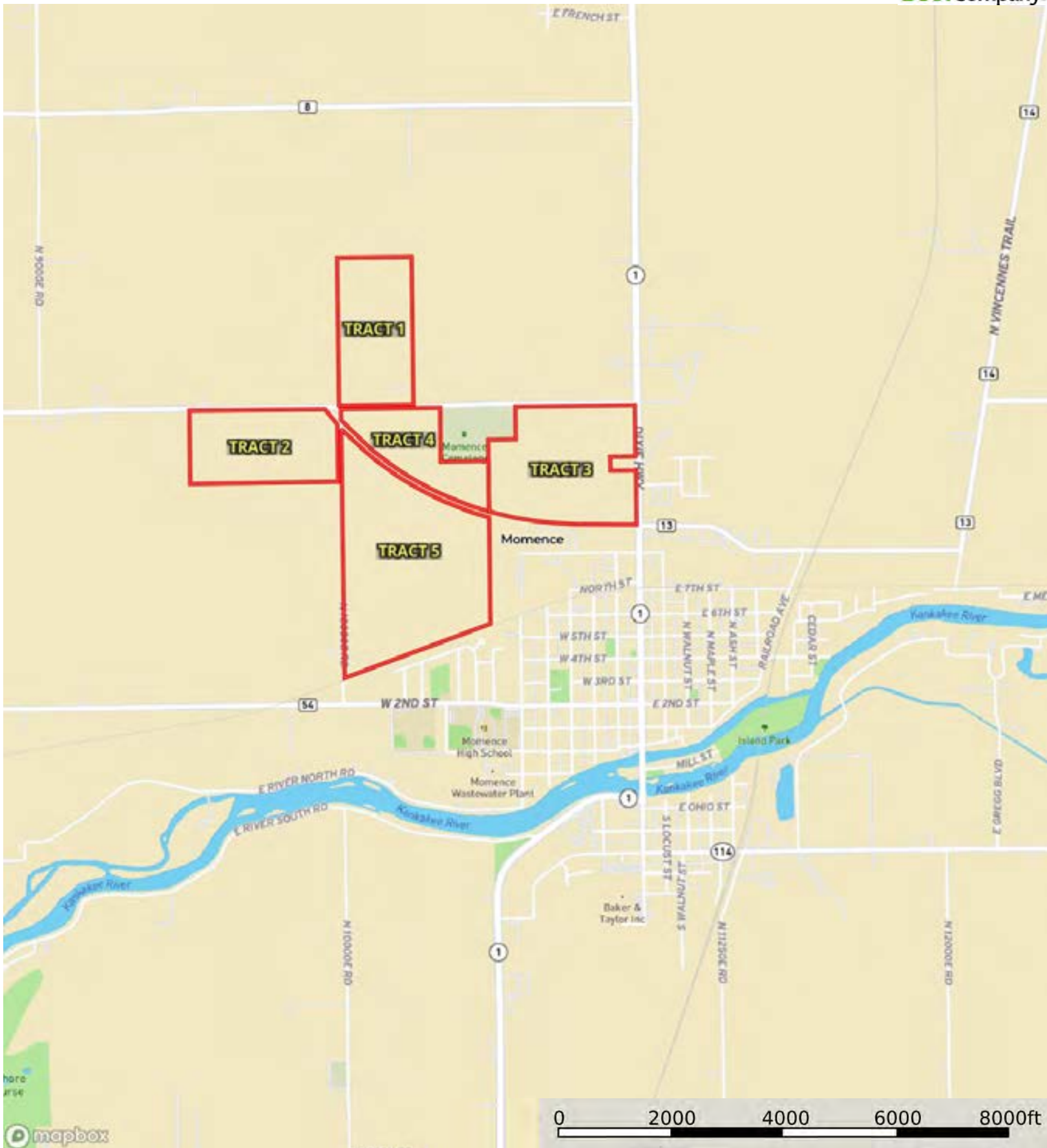
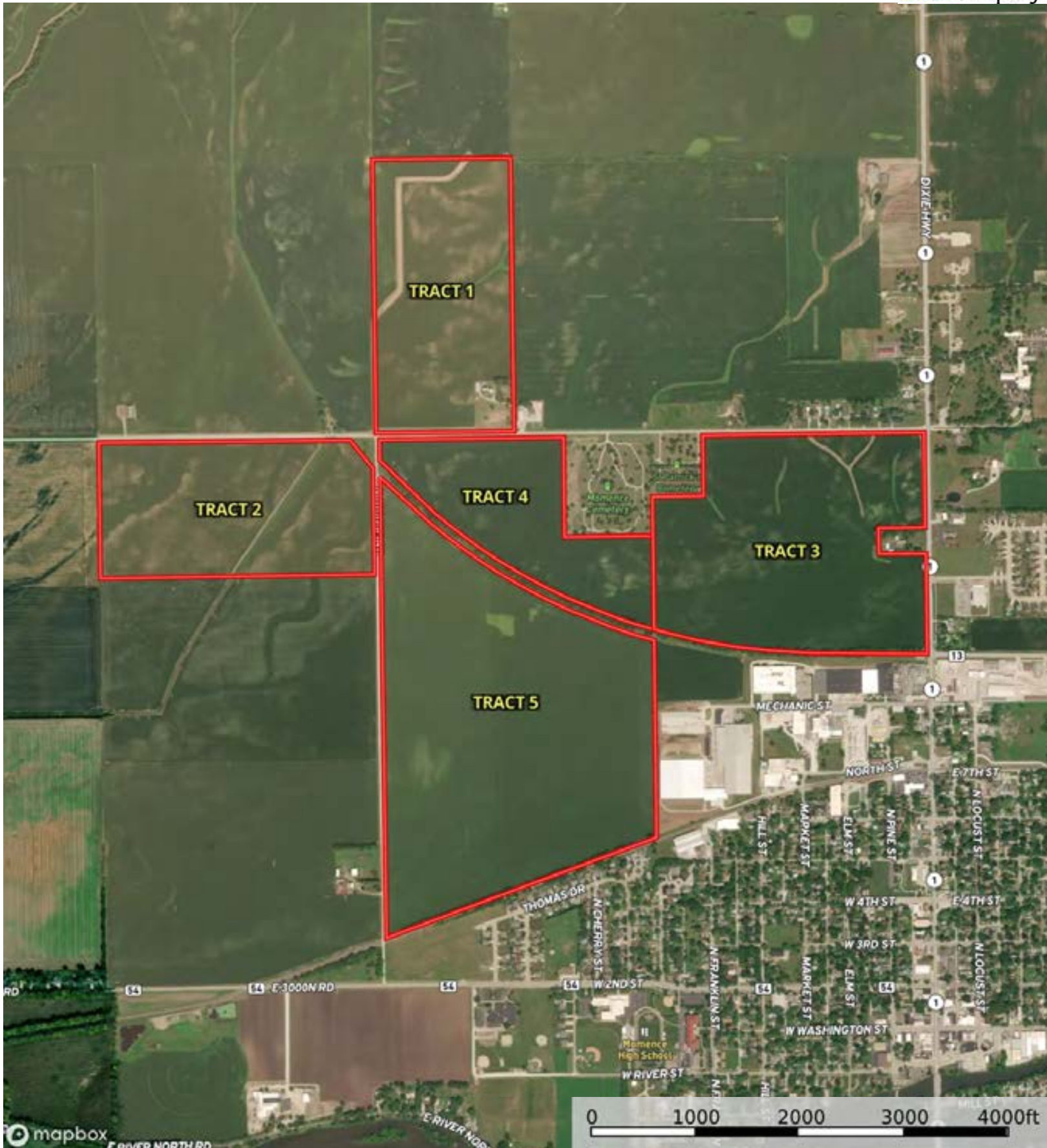


70449

Kankakee County, Illinois, 514 AC +/-



Boundary



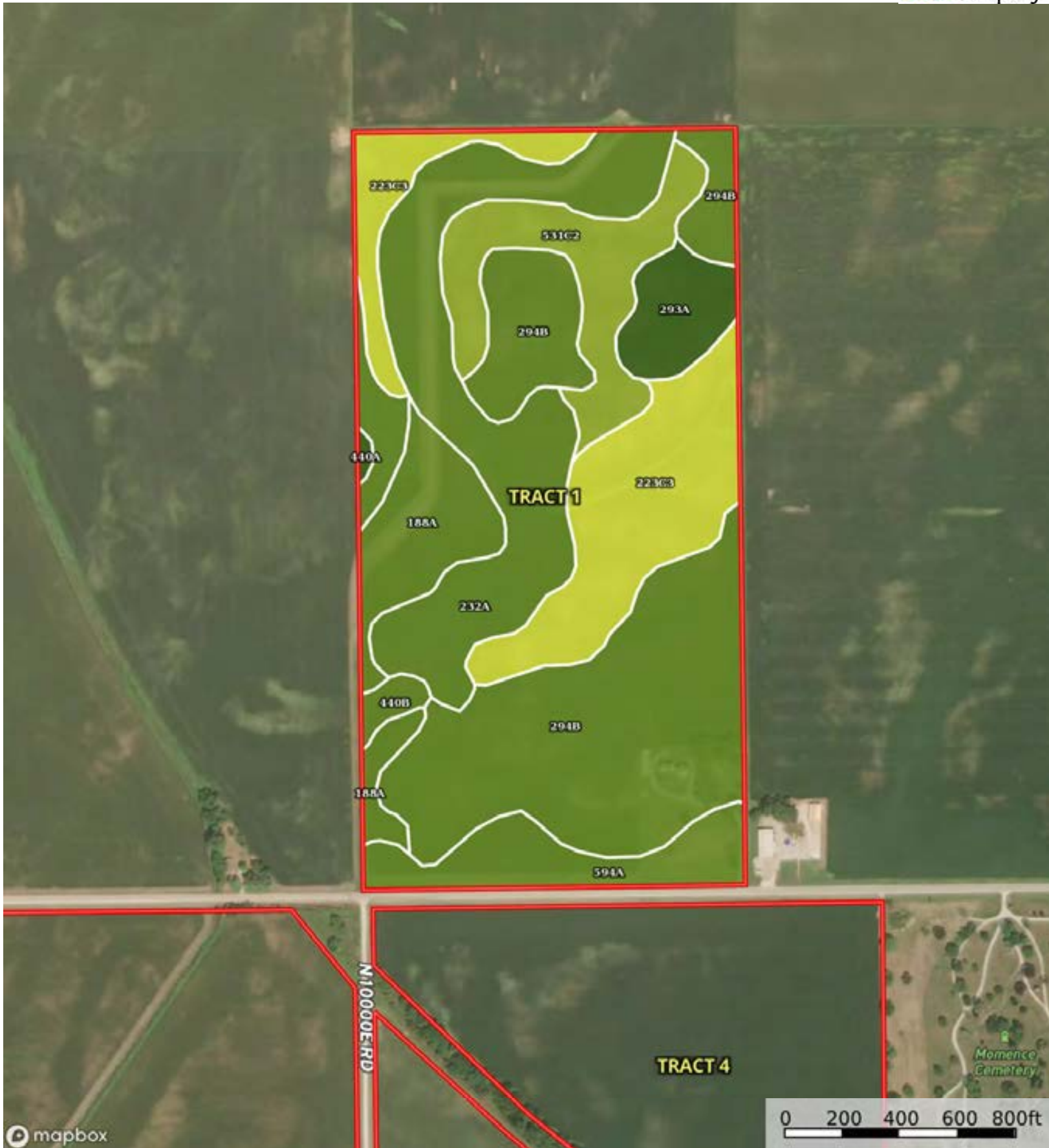
Boundary

70449

Kankakee County, Illinois, 514 AC +/-



 Boundary



 Boundary

Boundary 79.75 ac

SOIL CODE	SOIL DESCRIPTION	ACRES	%	PI	NCCPI	CAP
294B	Symerton silt loam, 2 to 5 percent slopes	24.94	31.27	130	68	2e
232A	Ashkum silty clay loam, 0 to 2 percent slopes	16.21	20.33	127	67	2w
223C3	Varna silty clay loam, 4 to 6 percent slopes, severely eroded	14.01	17.57	101	50	4e
531C2	Markham silt loam, 4 to 6 percent slopes, eroded	7.41	9.29	113	50	3e
188A	Beardstown silt loam, 0 to 2 percent slopes	6.21	7.79	114	90	2w
594A	Reddick clay loam, 0 to 2 percent slopes	5.24	6.57	130	68	2w
293A	Andres silt loam, 0 to 2 percent slopes	3.23	4.05	135	73	1
440B	Jasper loam, 2 to 5 percent slopes	2.32	2.91	129	79	2e
440A	Jasper loam, 0 to 2 percent slopes	0.18	0.23	130	77	1
TOTALS		79.75(*)	100%	121.64	65.22	2.4

(*) Total acres may differ in the second decimal compared to the sum of each acreage soil. This is due to a round error because we only show the acres of each soil with two decimal.






mapbox

Boundary



 Boundary

Boundary 77.43 ac

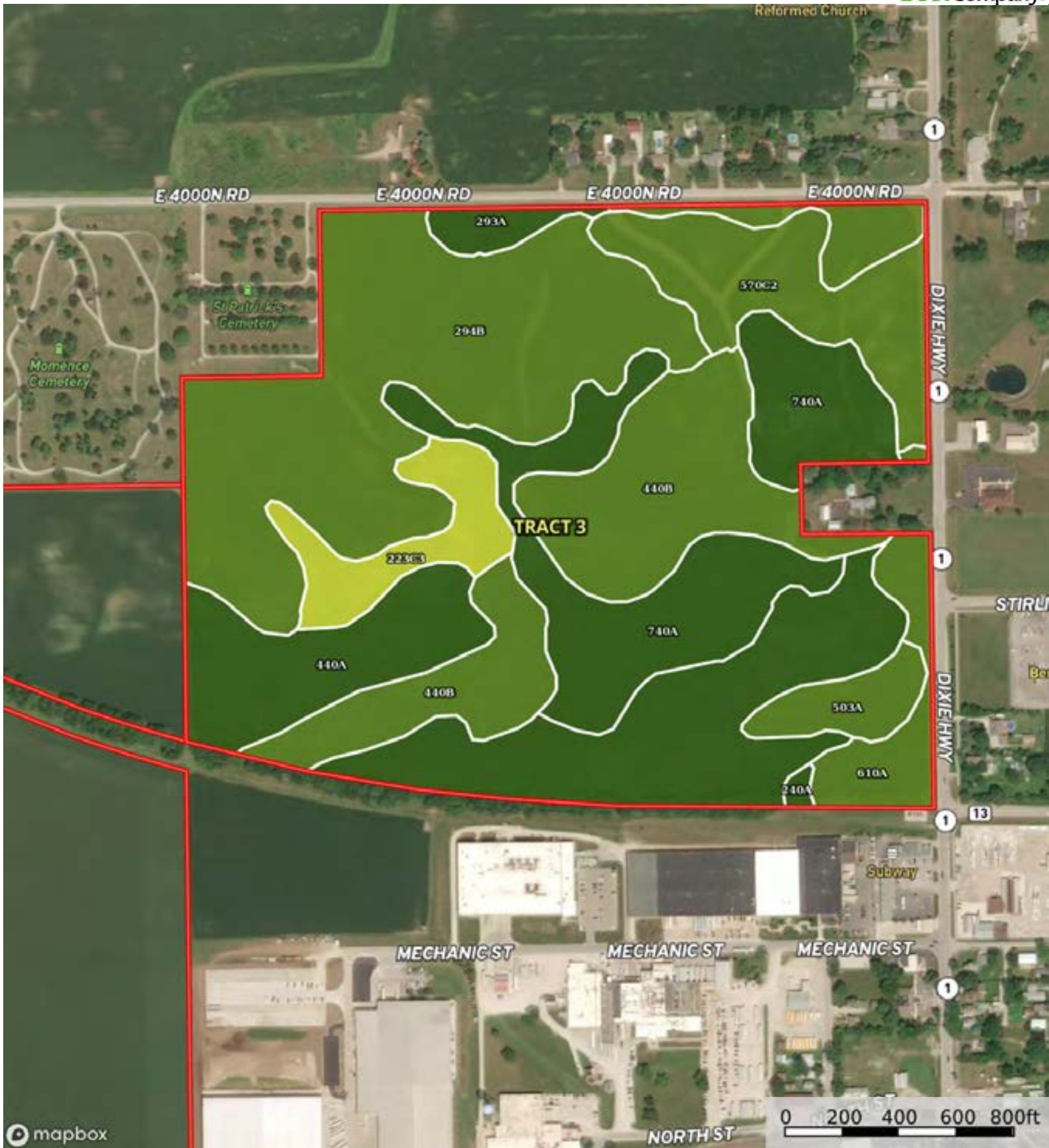
SOIL CODE	SOIL DESCRIPTION	ACRES	%	PI	NCCPI	CAP
150A	Onarga fine sandy loam, 0 to 2 percent slopes	46.43	59.96	110	74	2s
594A	Reddick clay loam, 0 to 2 percent slopes	15.71	20.29	130	68	2w
150B	Onarga fine sandy loam, 2 to 5 percent slopes	8.79	11.35	109	72	2e
740A	Darroch silt loam, 0 to 2 percent slopes	4.75	6.13	129	78	1
8302A	Ambraw loam, 0 to 2 percent slopes, occasionally flooded	1.54	1.99	114	77	2w
125A	Selma loam, 0 to 2 percent slopes	0.21	0.27	129	77	2w
TOTALS		77.43(*)	100%	115.24	72.87	1.94

(*) Total acres may differ in the second decimal compared to the sum of each acreage soil. This is due to a round error because we only show the acres of each soil with two decimal.





Boundary



Boundary

Boundary 114.1 ac

SOIL CODE	SOIL DESCRIPTION	ACRES	%	PI	NCCPI	CAP
294B	Symerton silt loam, 2 to 5 percent slopes	32.27	28.28	130	68	2e
440A	Jasper loam, 0 to 2 percent slopes	23.92	20.96	130	77	1
440B	Jasper loam, 2 to 5 percent slopes	17.46	15.3	129	79	2e
740A	Darroch silt loam, 0 to 2 percent slopes	17.44	15.28	129	78	1
570C2	Martinsville loam, 4 to 6 percent slopes, eroded	9.54	8.36	107	81	2e
223C3	Varna silty clay loam, 4 to 6 percent slopes, severely eroded	4.88	4.28	101	50	4e
610A	Tallmadge sandy loam, 0 to 2 percent slopes	4.09	3.58	123	66	2w
503A	Rockton silt loam, 0 to 2 percent slopes	2.76	2.42	101	66	2s
293A	Andres silt loam, 0 to 2 percent slopes	1.46	1.28	135	73	1
240A	Plattville silt loam, 0 to 2 percent slopes	0.28	0.25	120	82	1
TOTALS		114.1(*)	100%	125.6 1	73.39	1.71

(*) Total acres may differ in the second decimal compared to the sum of each acreage soil. This is due to a round error because we only show the acres of each soil with two decimal.





 Boundary



 Boundary

|  Boundary 53.03 ac

SOIL CODE	SOIL DESCRIPTION	ACRES	%	PI	NCCPI	CAP
294B	Symerton silt loam, 2 to 5 percent slopes	32.04	60.42	130	68	2e
440A	Jasper loam, 0 to 2 percent slopes	10.19	19.22	130	77	1
594A	Reddick clay loam, 0 to 2 percent slopes	5.43	10.24	130	68	2w
440B	Jasper loam, 2 to 5 percent slopes	2.92	5.51	129	79	2e
223C3	Varna silty clay loam, 4 to 6 percent slopes, severely eroded	2.45	4.62	101	50	4e
TOTALS		53.03(*)	100%	128.6 1	69.5	1.9

(*) Total acres may differ in the second decimal compared to the sum of each acreage soil. This is due to a round error because we only show the acres of each soil with two decimal.

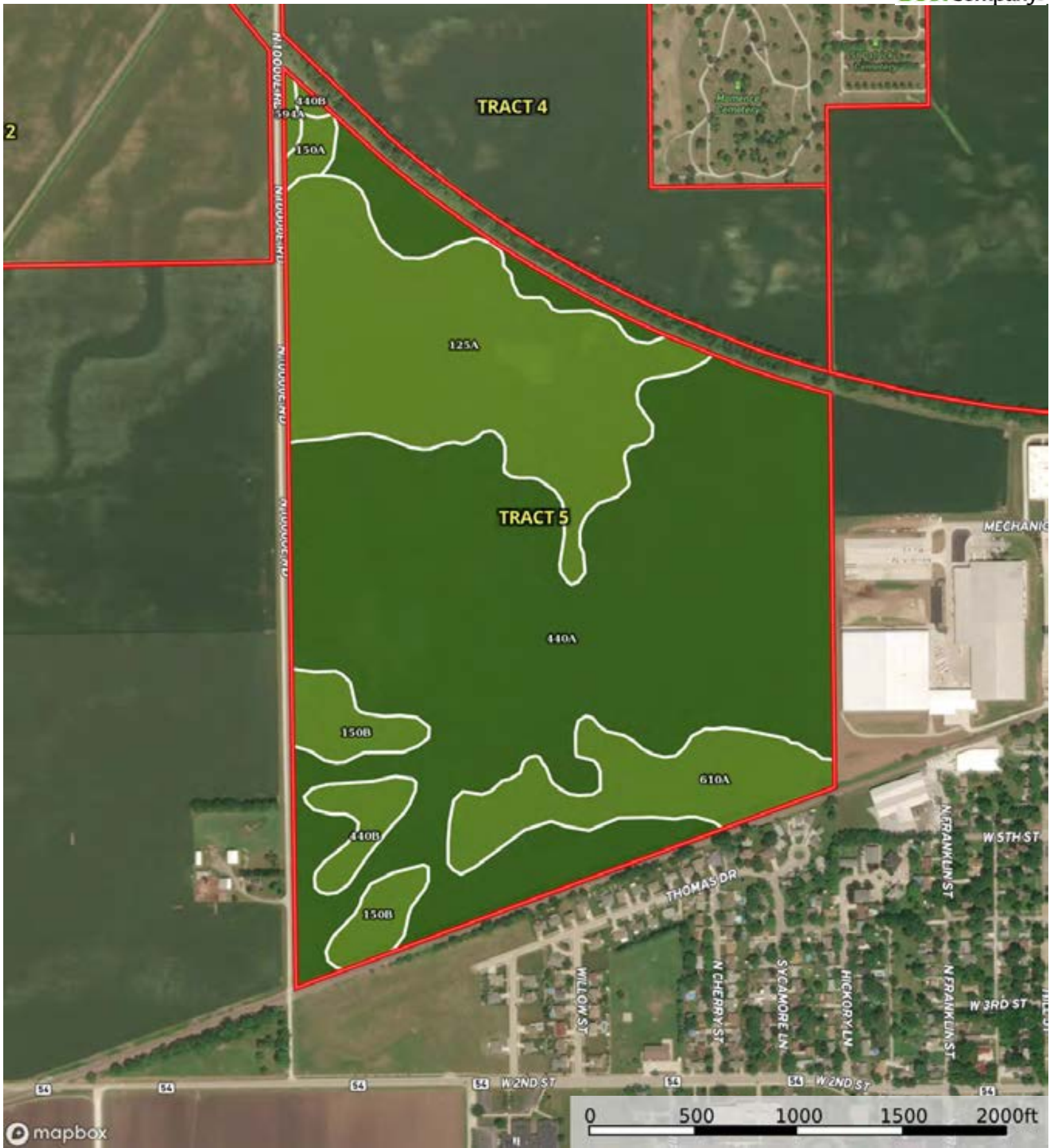




Boundary

70449

Kankakee County, Illinois, 514 AC +/-



Boundary



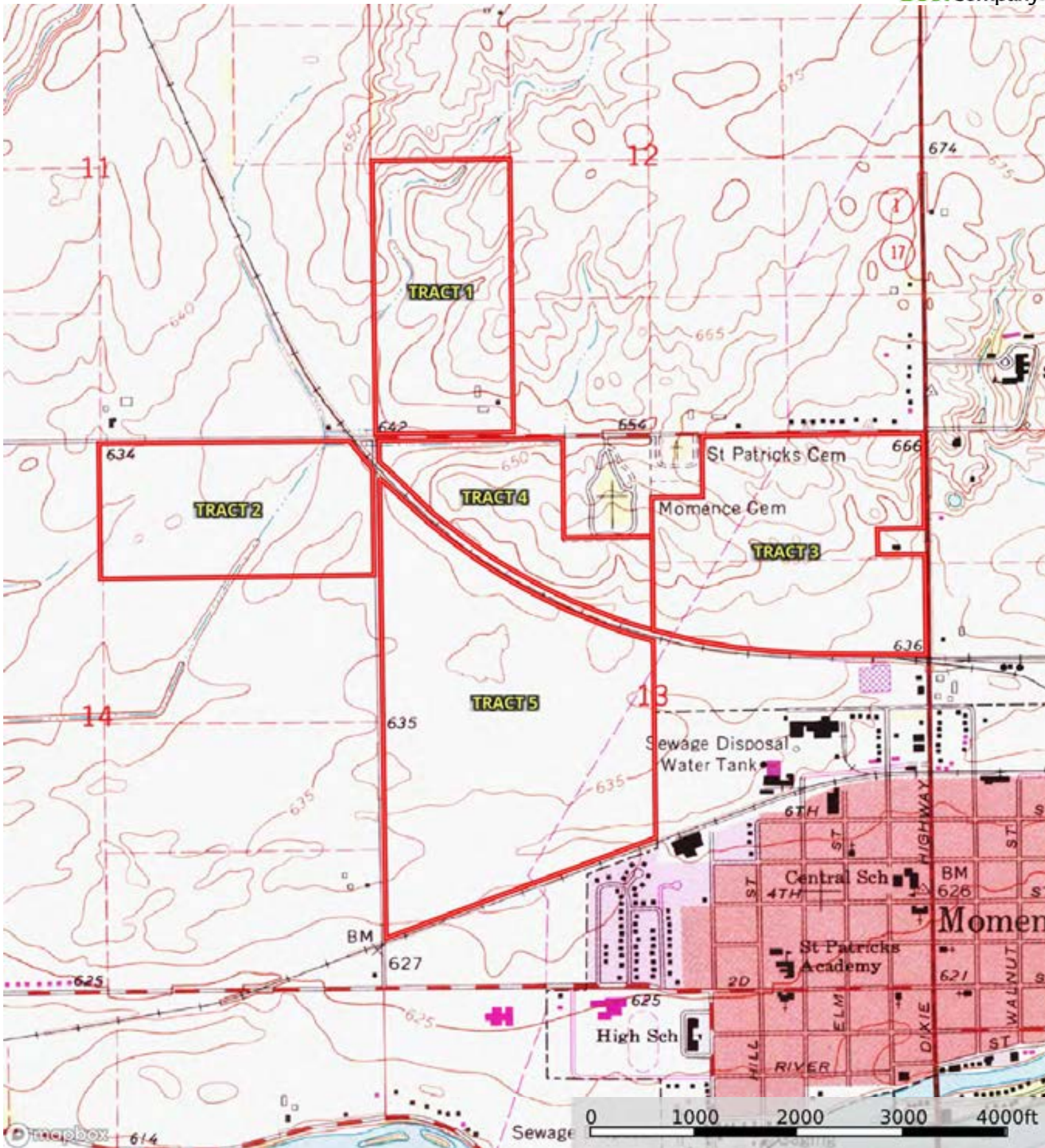
The information contained herein was obtained from sources deemed to be reliable. MapRight Services makes no warranties or guarantees as to the completeness or accuracy thereof.

Boundary 179.28 ac

SOIL CODE	SOIL DESCRIPTION	ACRES	%	PI	NCCPI	CAP
440A	Jasper loam, 0 to 2 percent slopes	112.48	62.74	130	77	1
125A	Selma loam, 0 to 2 percent slopes	40.09	22.36	129	77	2w
610A	Tallmadge sandy loam, 0 to 2 percent slopes	14.18	7.91	123	66	2w
150B	Onarga fine sandy loam, 2 to 5 percent slopes	7.01	3.91	109	72	2e
440B	Jasper loam, 2 to 5 percent slopes	3.6	2.01	129	79	2e
150A	Onarga fine sandy loam, 0 to 2 percent slopes	1.33	0.74	110	74	2s
594A	Reddick clay loam, 0 to 2 percent slopes	0.59	0.33	130	68	2w
TOTALS		179.28(*)	100%	128.24	75.93	1.37

(*) Total acres may differ in the second decimal compared to the sum of each acreage soil. This is due to a round error because we only show the acres of each soil with two decimal.





Boundary