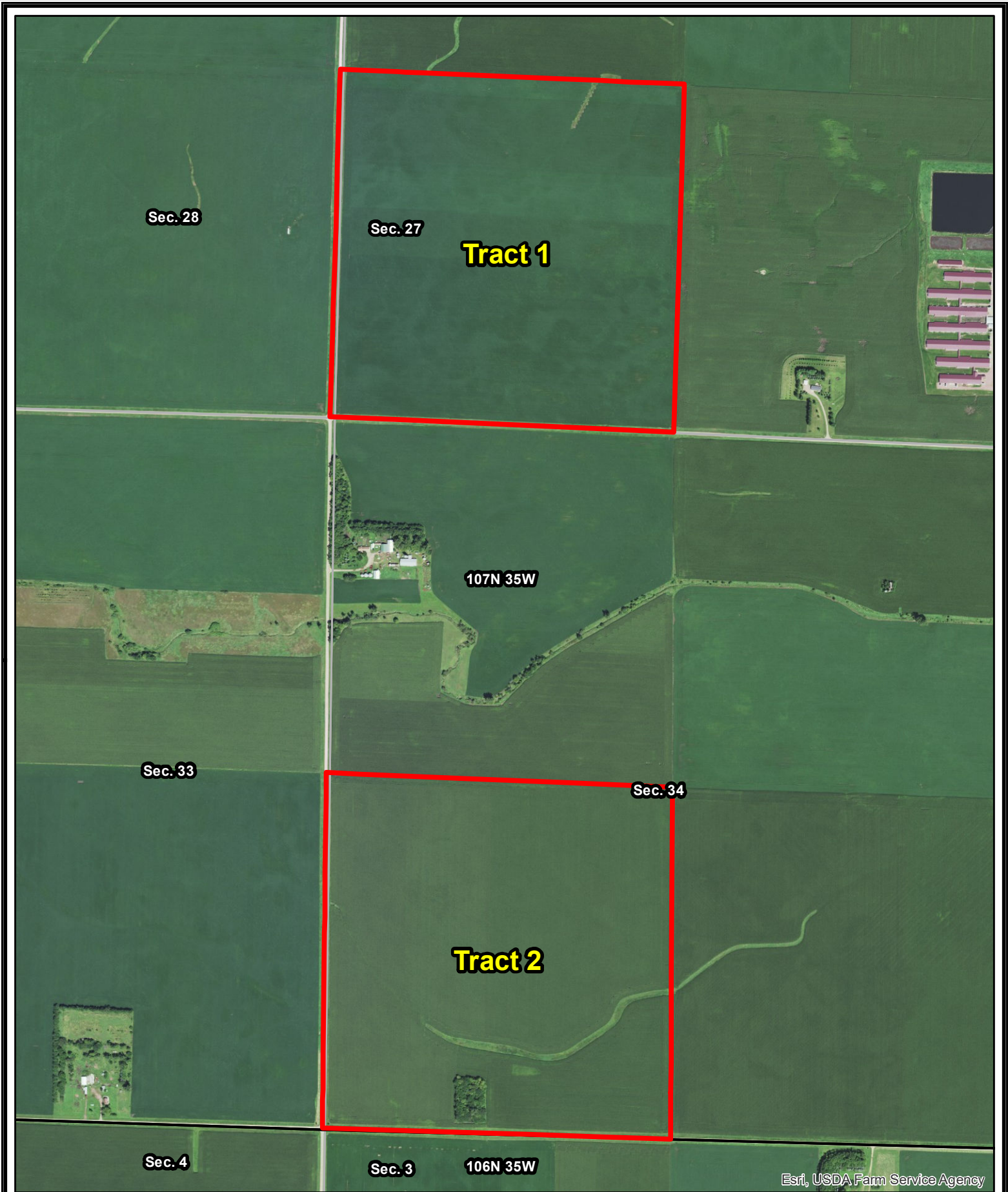


A-75166
Cottonwood County, Minnesota

Latitude: 43.9880°N
 Longitude: -94.9822°W
 Imagery Source: USDA NAIP
 Soil Data Source: USDA NRCS
 Boundaries Are Approximate

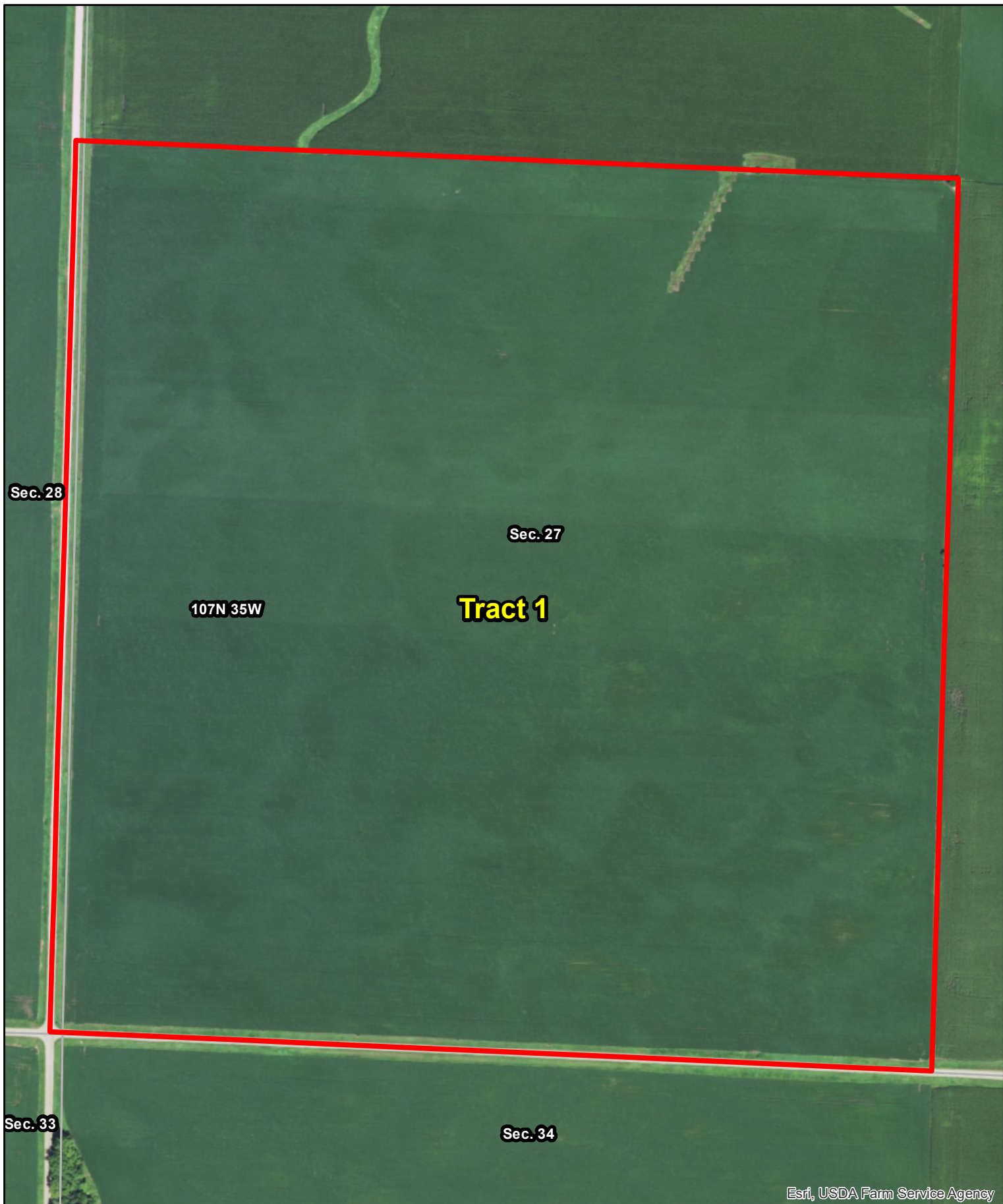


Esri, USDA Farm Service Agency



A-75166
Cottonwood County, Minnesota

Latitude: 44.0321°N
Longitude: -95.0348°W
Imagery Source: USDA NAIP
Soil Data Source: USDA NRCS
Boundaries Are Approximate

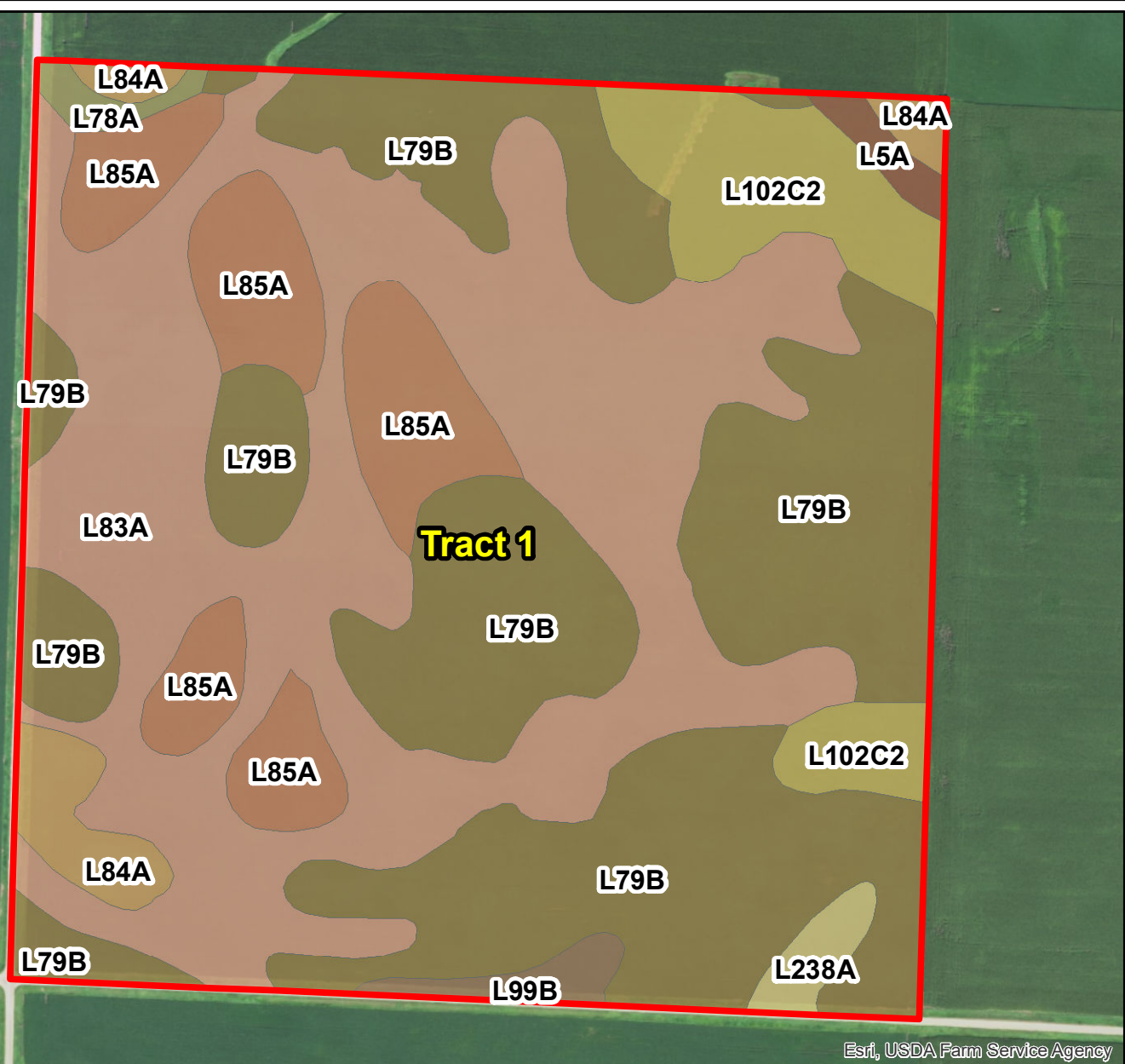


Esri, USDA Farm Service Agency



A-75166
Cottonwood County, Minnesota

Latitude: 44.0395°N
Longitude: -95.0350°W
Imagery Source: USDA NAIP
Soil Data Source: USDA NRCS
Boundaries Are Approximate



Esri, USDA Farm Service Agency

MAP SYMBOL	NAME	NON IRR LCC	PRODUCTIVITY INDEX	ACRES
L79B	Clarion loam, 2 to 6 percent slopes	Ile	95	62.0
L83A	Webster clay loam, 0 to 2 percent slopes	IIw	93	60.0
L85A	Nicollet clay loam, 1 to 3 percent slopes	Iw	99	16.0
L102C2	Clarion-Storden complex, 6 to 10 percent slopes, moderately eroded	IIIle	87	10.7
L84A	Glencoe clay loam, 0 to 1 percent slopes	IIIw	86	4.3
L99B	Clarion-Swanlake complex, 2 to 6 percent slopes	Ile	92	1.6
L238A	Webster-Delft complex, 0 to 2 percent slopes	IIw	94	1.5
L5A	Delft, overwash-Delft complex, 1 to 4 percent slopes	IIw	96	1.1
L78A	Canisteo clay loam, 0 to 2 percent slopes	IIw	93	1.0
TOTAL			93.8	158.2



A-75166
Cottonwood County, Minnesota

Latitude: 44.0395°N
 Longitude: -95.0350°W
 Imagery Source: USDA NAIP
 Soil Data Source: USDA NRCS
 Boundaries Are Approximate

Sec. 33

Sec. 34

107N 35W

Tract 2

Sec. 4

Sec. 3

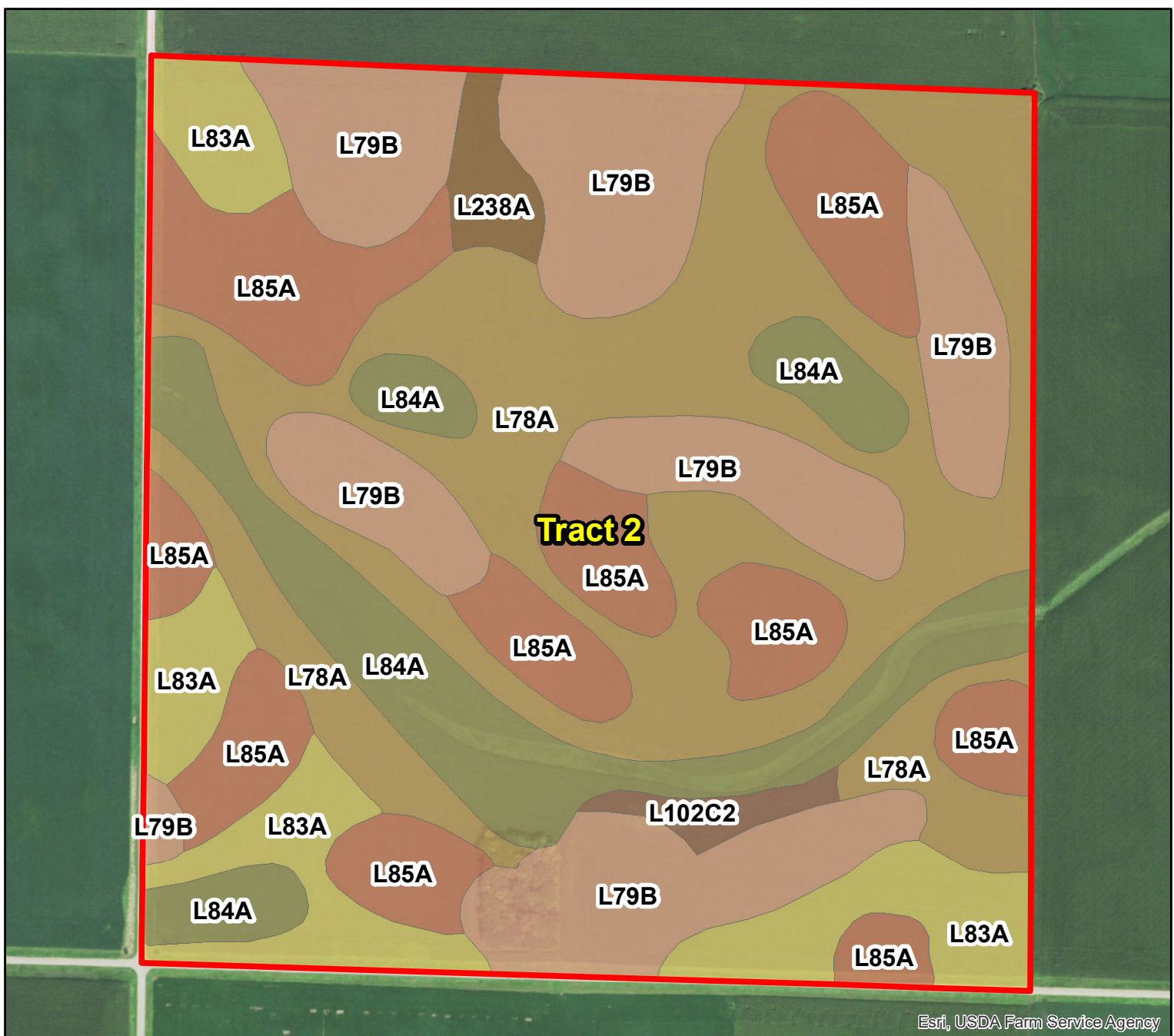
106N 35W

Esri, USDA Farm Service Agency



A-75166
Cottonwood County, Minnesota

Latitude: 44.0248°N
Longitude: -95.0347°W
Imagery Source: USDA NAIP
Soil Data Source: USDA NRCS
Boundaries Are Approximate



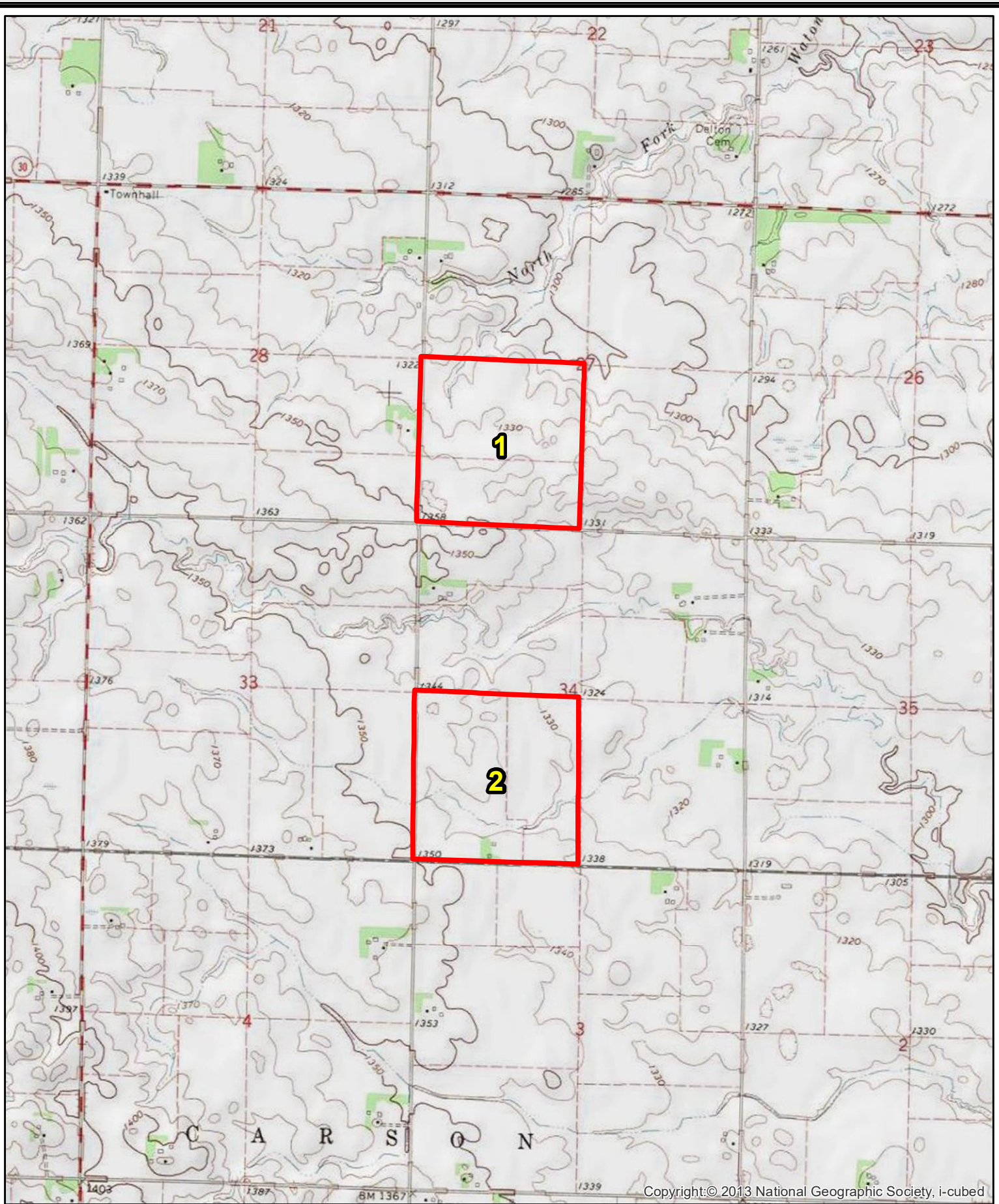
Esri, USDA Farm Service Agency

MAP SYMBOL	NAME	NON IRR LCC	PRODUCTIVITY INDEX	ACRES
L78A	Canisteo clay loam, 0 to 2 percent slopes	IIw	93	48.9
L79B	Clarion loam, 2 to 6 percent slopes	Ile	95	39.0
L85A	Nicollet clay loam, 1 to 3 percent slopes	Iw	99	31.5
L84A	Glencoe clay loam, 0 to 1 percent slopes	IIIw	86	20.8
L83A	Webster clay loam, 0 to 2 percent slopes	IIw	93	18.0
L238A	Webster-Delft complex, 0 to 2 percent slopes	IIw	94	2.4
L102C2	Clarion-Storden complex, 6 to 10 percent slopes, moderately eroded	IIIe	87	1.6
TOTAL			93.7	162.3



**A-75166
Cottonwood County, Minnesota**

Latitude: 44.0248°N
 Longitude: -95.0348°W
 Imagery Source: USDA NAIP
 Soil Data Source: USDA NRCS
 Boundaries Are Approximate



Copyright:© 2013 National Geographic Society, i-cubed



A-75166
Cottonwood County, Minnesota

Latitude: 44.0321°N
Longitude: -95.0348°W
Imagery Source: USDA NAIP
Soil Data Source: USDA NRCS
Boundaries Are Approximate