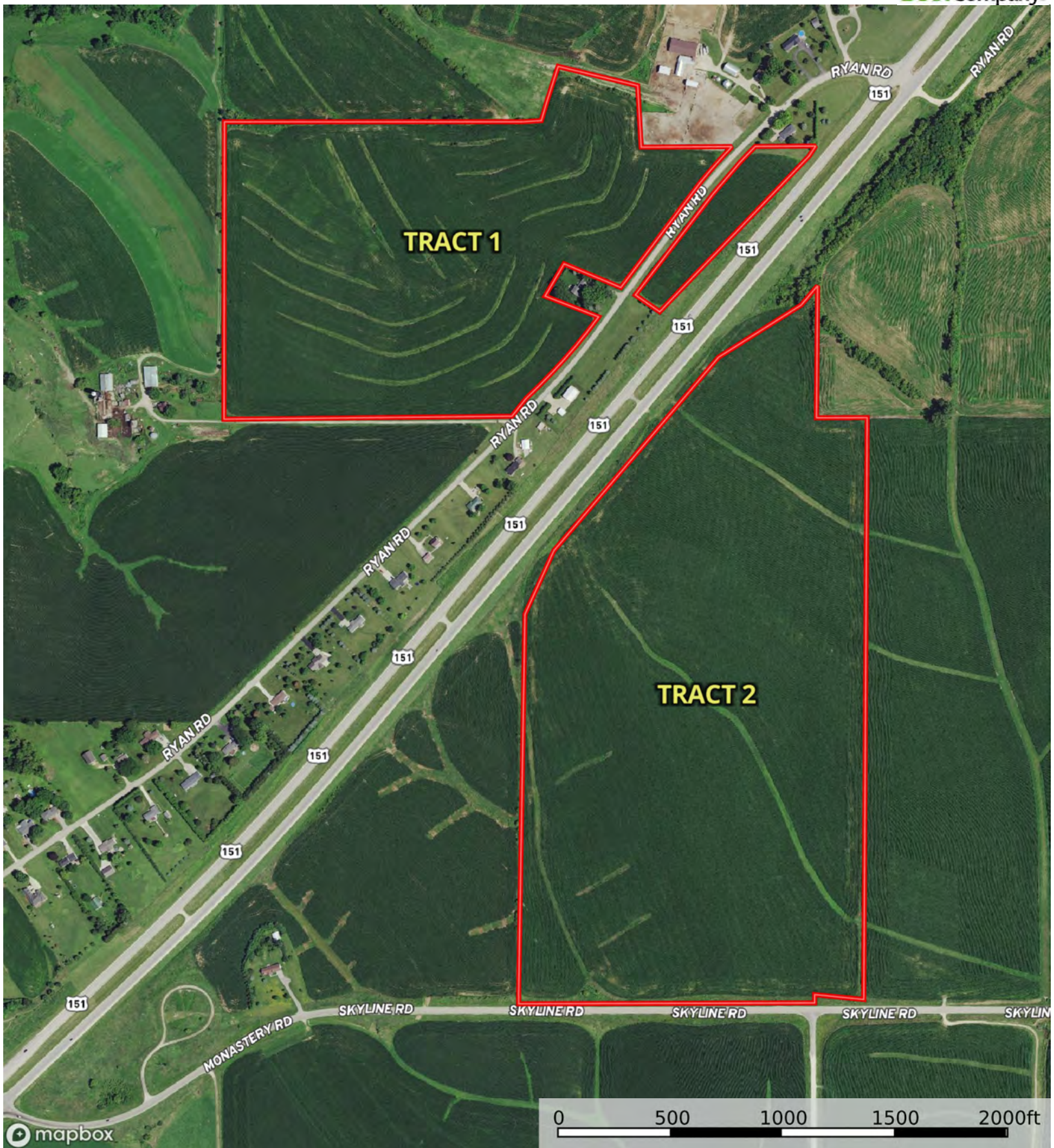

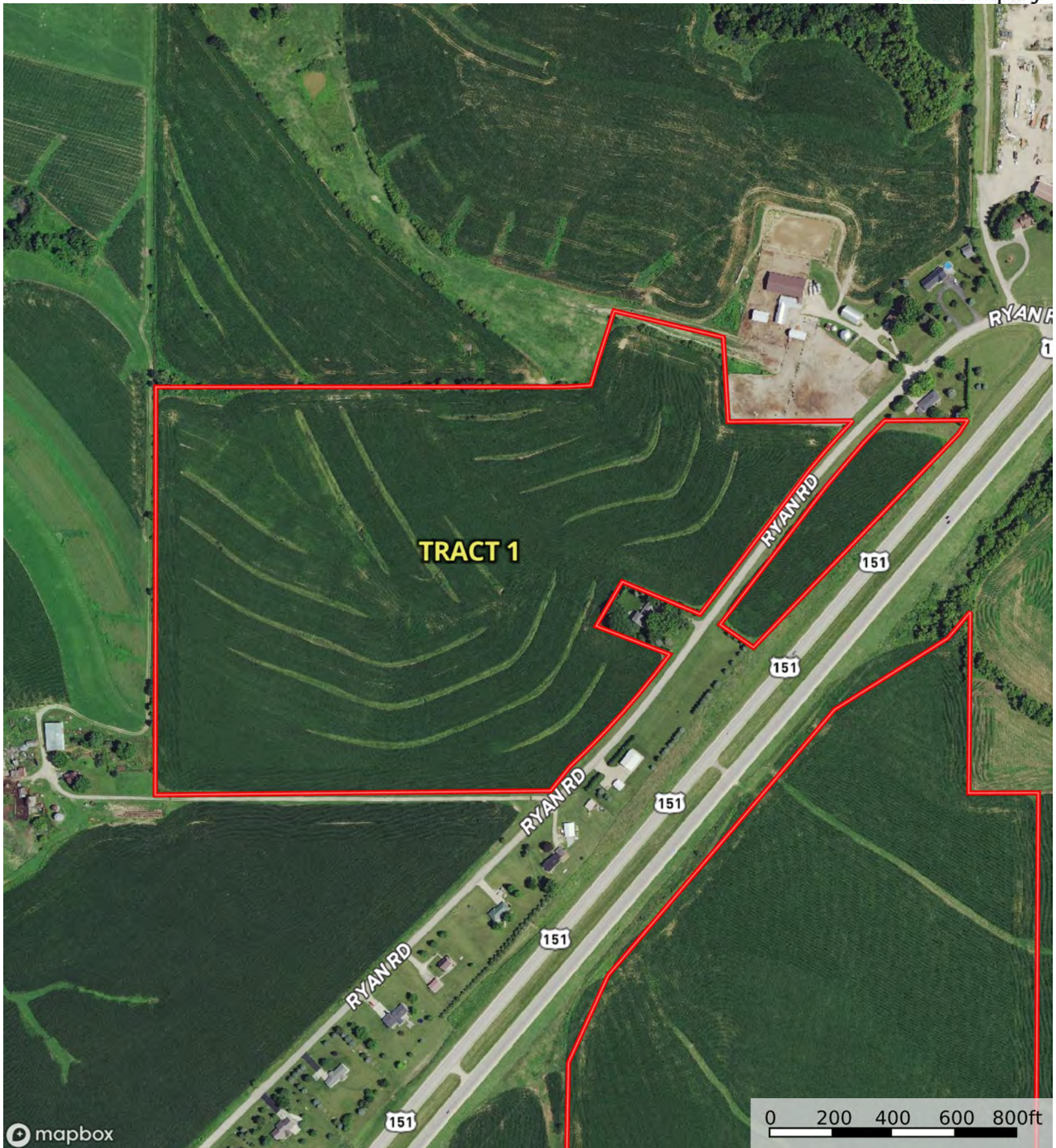


 Boundary




 Boundary



 Boundary



 Boundary

|  All Polygons 58.76 ac

SOIL CODE	SOIL DESCRIPTION	ACRES	%	CSR2	CPI	NCCPI	CAP
163D2	Fayette silt loam, 9 to 14 percent slopes, moderately eroded	20.83	35.45	46.0	0	82	3e
162C2	Downs silt loam, 5 to 9 percent slopes, moderately eroded	12.7	21.61	80.0	0	87	3e
703E2	Dubuque silt loam, 14 to 18 percent slopes, moderately eroded	12.51	21.29	8.0	0	44	4e
163C2	Fayette silt loam, 5 to 9 percent slopes, moderately eroded	6.1	10.38	72.0	0	86	3e
163C	Fayette silt loam, 5 to 9 percent slopes	4.23	7.2	75.0	0	91	3e
703E	Dubuque silt loam, 14 to 18 percent slopes	1.18	2.01	8.0	0	55	4e
162B	Downs silt loam, 2 to 6 percent slopes	0.91	1.55	90.0	90	92	2e
162D2	Downs silt loam, 9 to 14 percent slopes, moderately eroded	0.24	0.41	54.0	0	83	3e
499F	Nordness silt loam, 18 to 35 percent slopes	0.06	0.1	5.0	0	11	7s
TOTALS		58.76(*)	100%	49.95	1.39	75.6	3.22

(*) Total acres may differ in the second decimal compared to the sum of each acreage soil. This is due to a round error because we only show the acres of each soil with two decimal.

|  Boundary 54.96 ac

SOIL CODE	SOIL DESCRIPTION	ACRES	%	CSR2	CPI	NCCPI	CAP
163D2	Fayette silt loam, 9 to 14 percent slopes, moderately eroded	20.83	37.9	46.0	0	82	3e
703E2	Dubuque silt loam, 14 to 18 percent slopes, moderately eroded	12.51	22.76	8.0	0	44	4e
162C2	Downs silt loam, 5 to 9 percent slopes, moderately eroded	9.14	16.63	80.0	0	87	3e
163C2	Fayette silt loam, 5 to 9 percent slopes, moderately eroded	6.1	11.1	72.0	0	86	3e
163C	Fayette silt loam, 5 to 9 percent slopes	4.23	7.7	75.0	0	91	3e
703E	Dubuque silt loam, 14 to 18 percent slopes	1.18	2.15	8.0	0	55	4e
162B	Downs silt loam, 2 to 6 percent slopes	0.91	1.66	90.0	90	92	2e
499F	Nordness silt loam, 18 to 35 percent slopes	0.06	0.11	5.0	0	11	7s
TOTALS		54.96(*)	100%	47.99	1.49	74.83	3.24

(*) Total acres may differ in the second decimal compared to the sum of each acreage soil. This is due to a round error because we only show the acres of each soil with two decimal.

|  Boundary 3.8 ac

SOIL CODE	SOIL DESCRIPTION	ACRES	%	CSR2	CPI	NCCPI	CAP
162C2	Downs silt loam, 5 to 9 percent slopes, moderately eroded	3.56	93.68	80.0	0	87	3e
162D2	Downs silt loam, 9 to 14 percent slopes, moderately eroded	0.24	6.32	54.0	0	83	3e
TOTALS		3.8(*)	100%	78.36	-	86.75	3.0









(*) Total acres may differ in the second decimal compared to the sum of each acreage soil. This is due to a round error because we only show the acres of each soil with two decimal.

Capability Legend

Increased Limitations and Hazards

Decreased Adaptability and Freedom of Choice Users

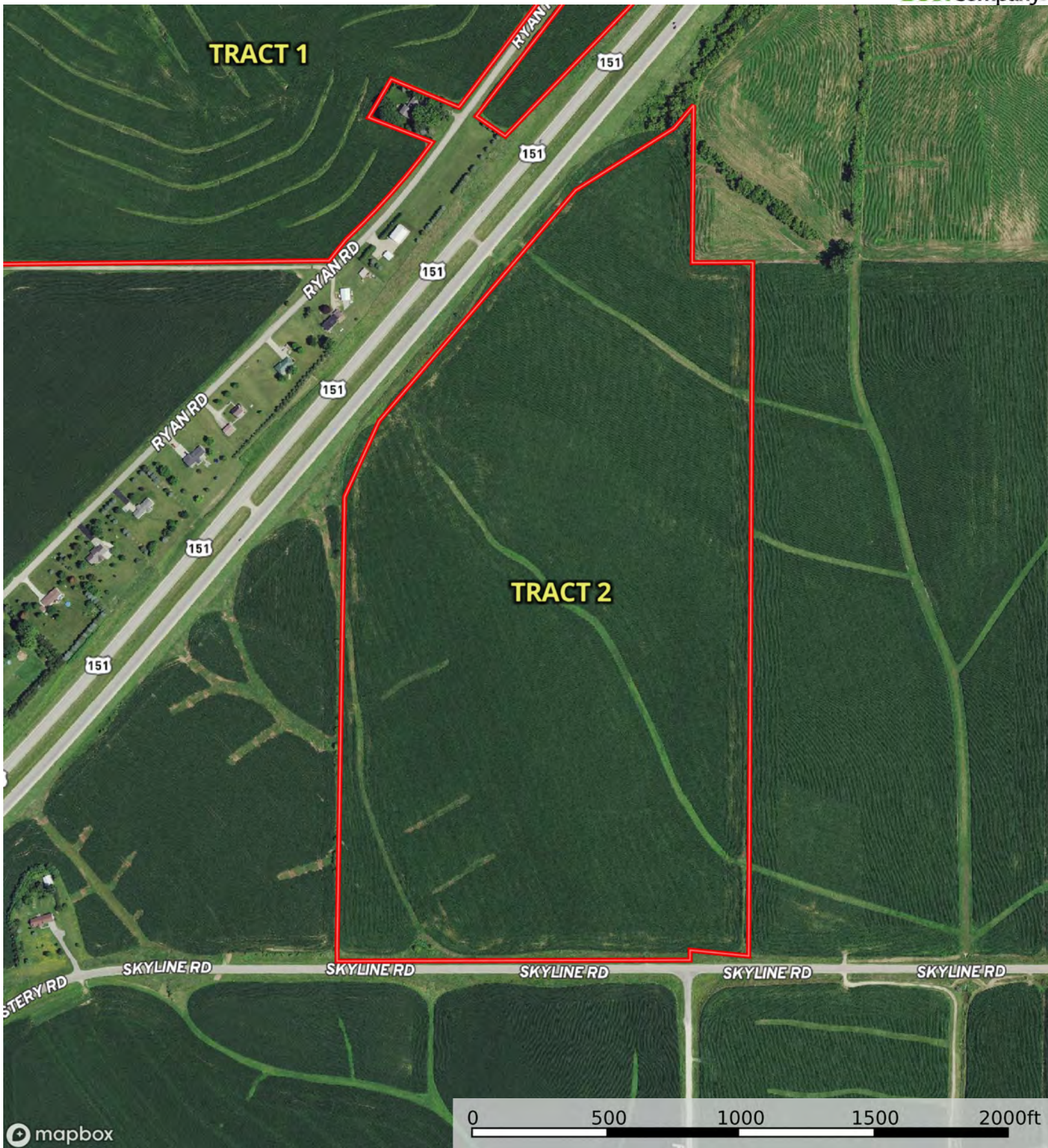
Land, Capability

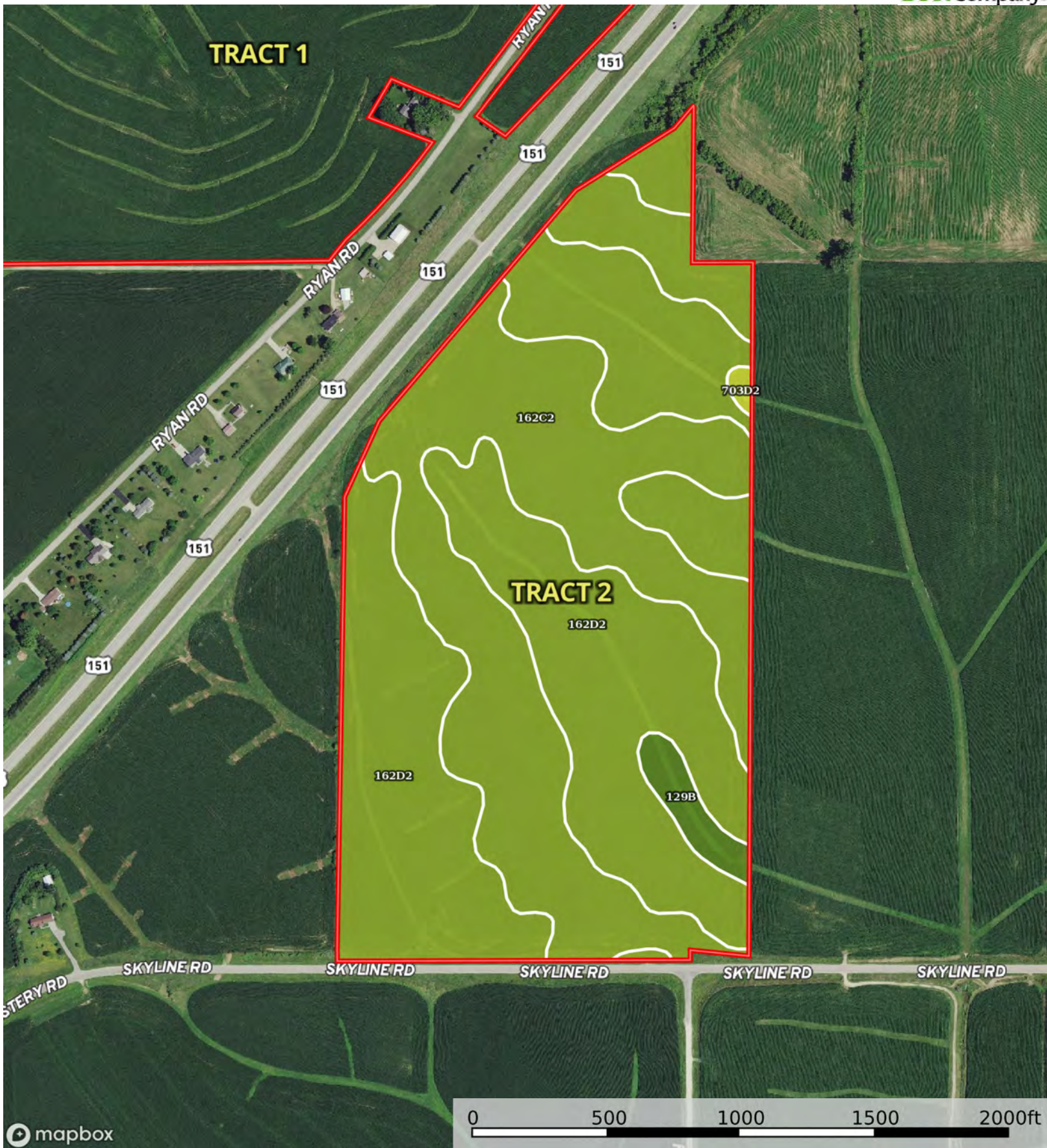
								
	1	2	3	4	5	6	7	8
'Wild Life'	•	•	•	•	•	•	•	•
Forestry	•	•	•	•	•	•	•	
Limited	•	•	•	•	•	•	•	
Moderate	•	•	•	•	•	•		
Intense	•	•	•	•	•			
Limited	•	•	•	•				
Moderate	•	•	•					
Intense	•	•						
Very Intense	•							

Grazing Cultivation

(c) climatic limitations (e) susceptibility to erosion

(s) soil limitations within the rooting zone (w) excess of water



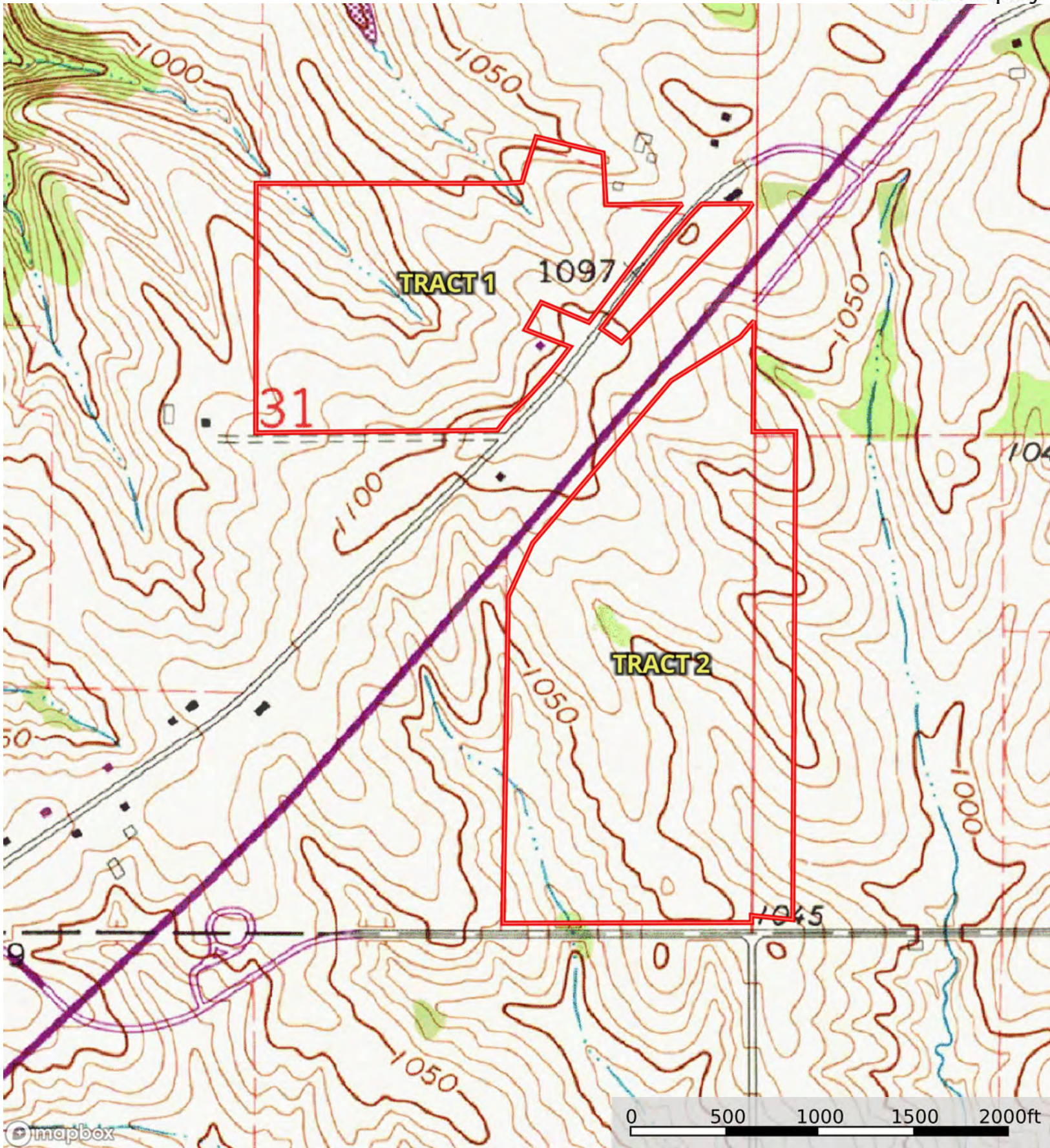



Boundary 90.63 ac

SOIL CODE	SOIL DESCRIPTION	ACRES	%	CSR2	CPI	NCCPI	CAP
162D2	Downs silt loam, 9 to 14 percent slopes, moderately eroded	51.87	57.23	54.0	0	83	3e
162C2	Downs silt loam, 5 to 9 percent slopes, moderately eroded	36.52	40.29	80.0	0	87	3e
129B	Arenzville-Chaseburg complex, 1 to 5 percent slopes	1.95	2.15	73.0	92	86	2w
703D2	Dubuque silt loam, 9 to 14 percent slopes, moderately eroded	0.29	0.32	13.0	0	47	4e
TOTALS		90.63(*)	100%	64.75	1.98	84.55	2.98

(*) Total acres may differ in the second decimal compared to the sum of each acreage soil. This is due to a round error because we only show the acres of each soil with two decimal.





 Boundary