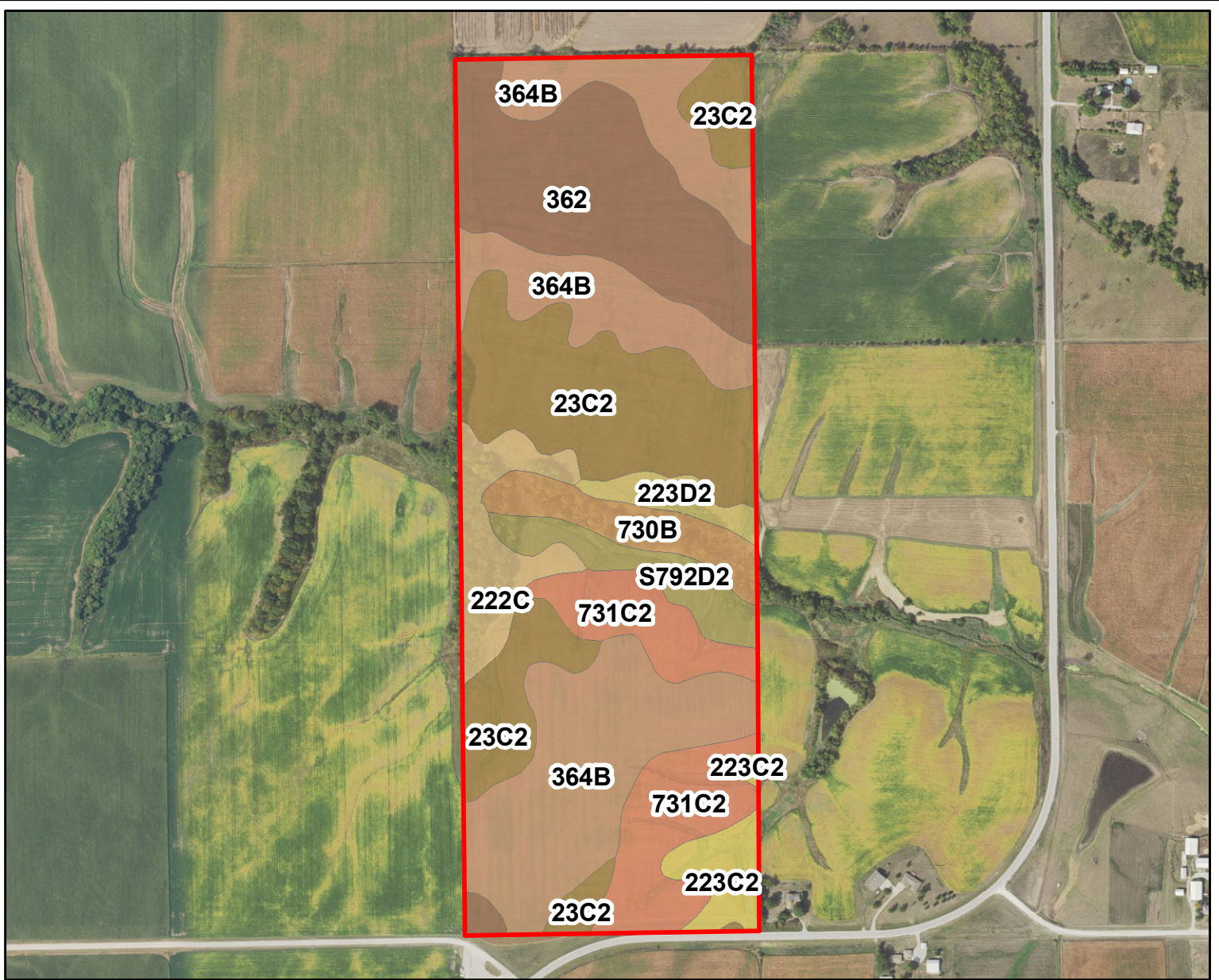


**A-76211**  
**Wapello Co., IA**

Latitude: 41.0369°N  
Longitude: -92.3026°W  
Imagery Source: USDA NAIP  
Soil Data Source: USDA NRCS  
Boundaries Are Approximate

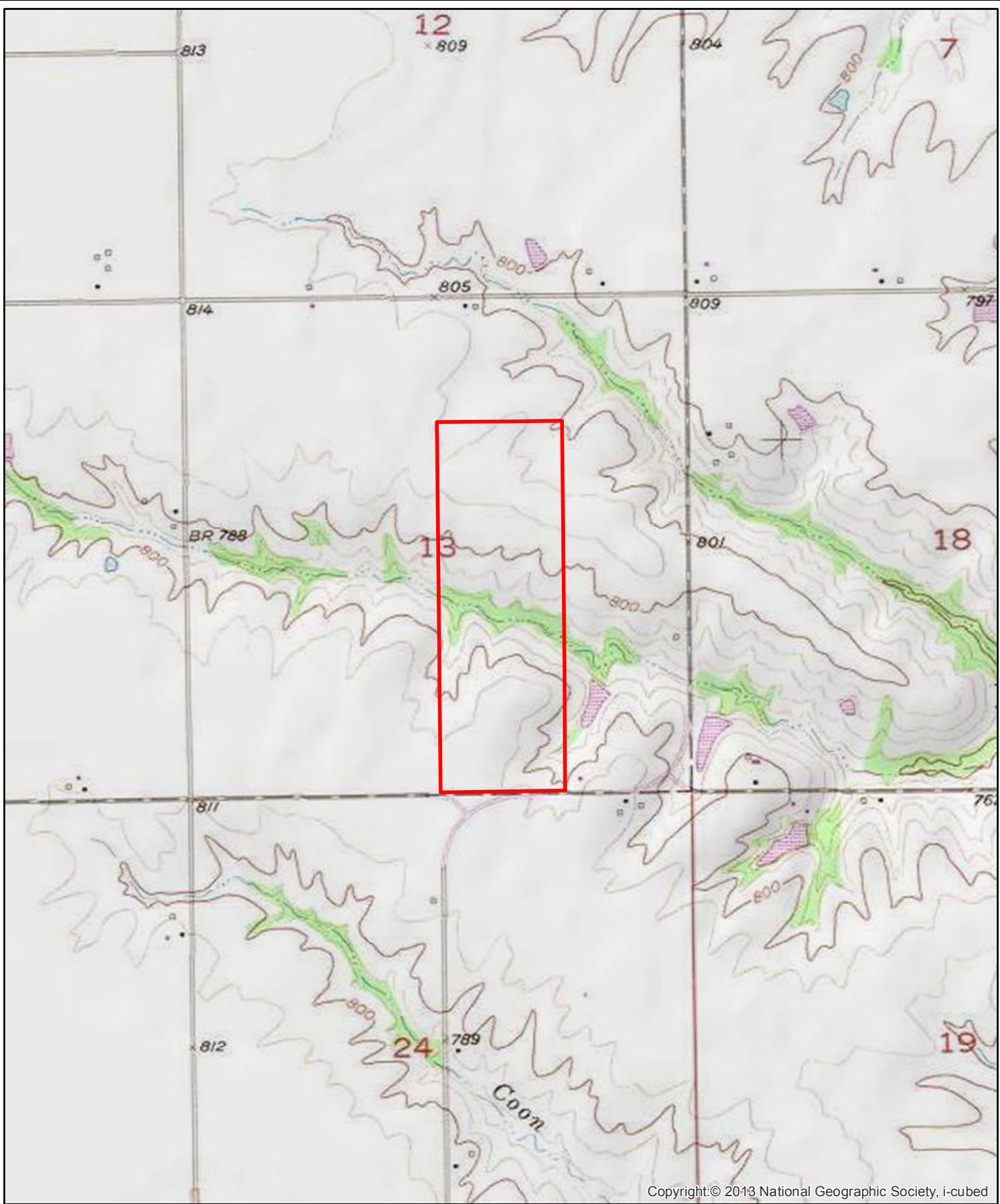


MAP SYMBOL	NAME	NON IRR		
		LCC	CSR2	ACRES
364B	Grundy silt loam, 2 to 5 percent slopes	IIe	74	34.5
23C2	Arispe silty clay loam, 5 to 9 percent slopes, moderately eroded	IIIe	62	27.6
362	Haig silt loam, 0 to 2 percent slopes	IIw	83	20.3
731C2	Pershing silty clay loam, 5 to 9 percent slopes, moderately eroded	IIIe	62	14.1
222C	Clarinda silty clay loam, 5 to 9 percent slopes	IVw	37	6.6
730B	Nodaway-Cantril complex, 2 to 5 percent slopes	IIw	80	5.4
S792D2	Armstrong loam, 9 to 14 percent slopes, moderately eroded	IVe	26	4.8
223C2	Rinda silty clay loam, 5 to 9 percent slopes, moderately eroded	IVw	45	3.7
223D2	Rinda silty clay loam, 9 to 14 percent slopes, moderately eroded	IVe	19	2.4
<b>TOTAL</b>			<b>65.6</b>	<b>119.4</b>



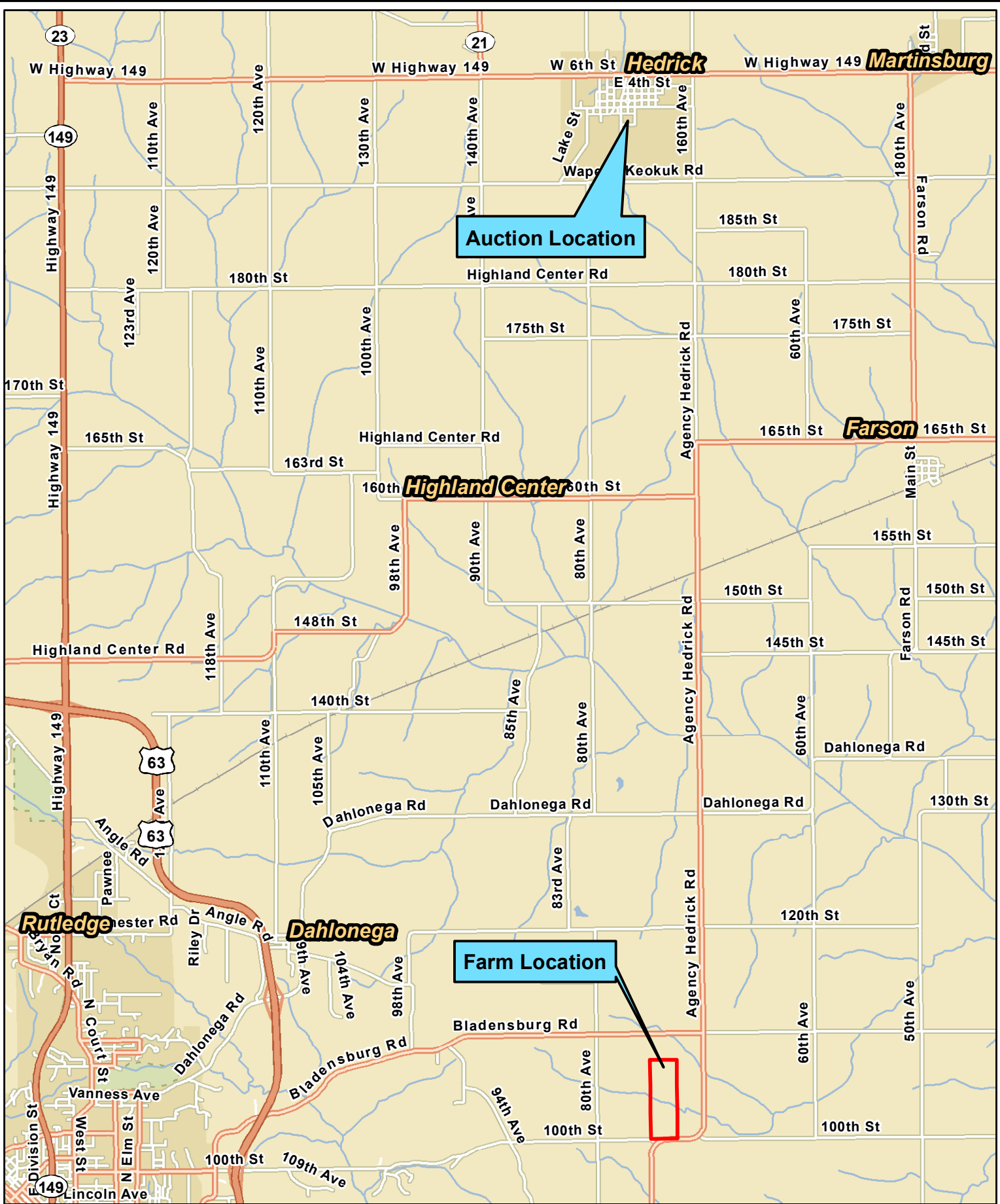
**A-76211**  
**Wapello Co., IA**

Latitude: 41.0369°N  
 Longitude: -92.3026°W  
 Imagery Source: USDA NAIP  
 Soil Data Source: USDA NRCS  
 Boundaries Are Approximate



**A-76211**  
**Wapello Co., IA**

Latitude: 41.0369°N  
Longitude: -92.3026°W  
Imagery Source: USDA NAIP  
Soil Data Source: USDA NRCS  
Boundaries Are Approximate



**A-76211  
Wapello Co., IA**

Latitude: 41.1042°N  
 Longitude: -92.3315°W  
 Imagery Source: USDA NAIP  
 Soil Data Source: USDA NRCS  
 Boundaries Are Approximate