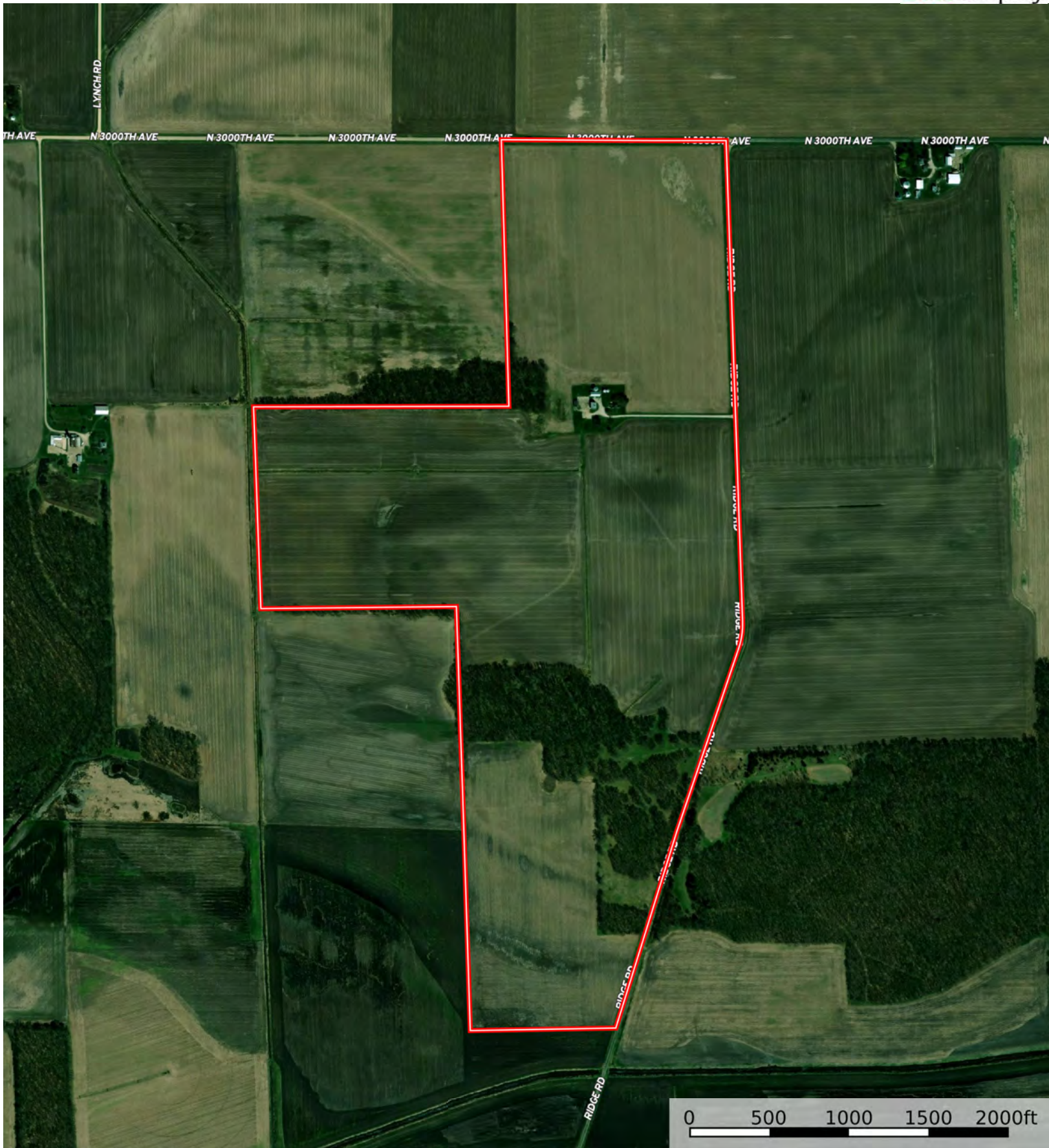
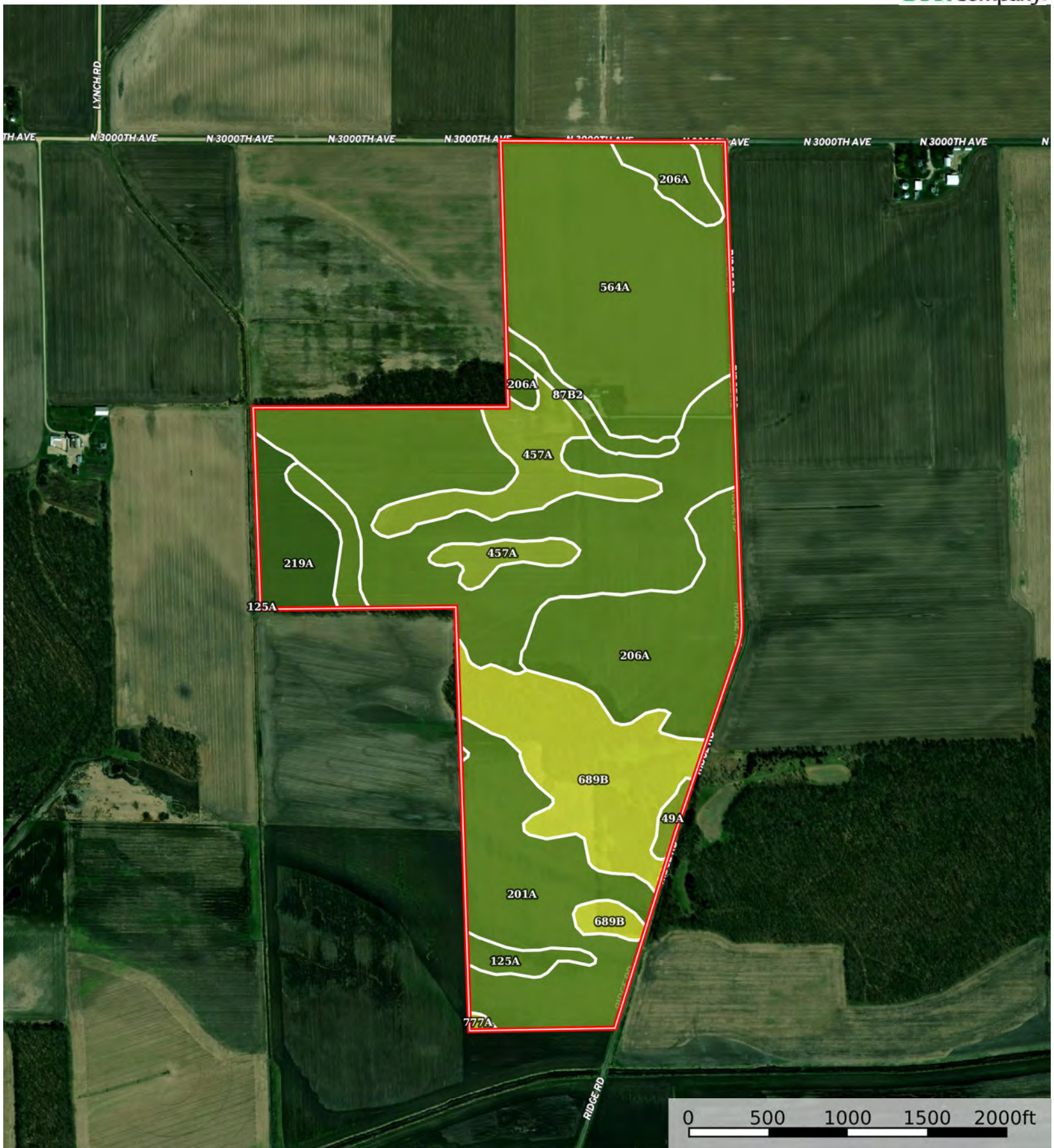


Boundary





Boundary



Boundary

| Boundary 227.67 ac

SOIL CODE	SOIL DESCRIPTION	ACRES	%	PI	NCCPI	CAP
261A	Niota silt loam, 0 to 2 percent slopes	54.74	24.04	98	86	2w
564A	Waukegan silt loam, 0 to 2 percent slopes	48.73	21.4	119	94	2s
206A	Thorp silt loam, 0 to 2 percent slopes	30.71	13.49	126	82	2w
201A	Gilford fine sandy loam, 0 to 2 percent slopes	30.2	13.27	110	69	2w
689B	Coloma sand, 1 to 7 percent slopes	27.27	11.98	74	51	4s
457A	Booker silty clay, 0 to 2 percent slopes	15.55	6.83	89	55	3w
219A	Millbrook silt loam, 0 to 2 percent slopes	9.36	4.11	129	92	1
125A	Selma loam, 0 to 2 percent slopes	6.22	2.73	129	77	2w
87B2	Dickinson sandy loam, 2 to 7 percent slopes, eroded	3.28	1.44	99	65	2e
49A	Watseka loamy fine sand, 0 to 2 percent slopes	1.29	0.57	93	60	3s
777A	Adrian muck, 0 to 2 percent slopes	0.32	0.14	110	70	4w
TOTALS		227.67(*)	100%	106.5	78.14	2.28









(*) Total acres may differ in the second decimal compared to the sum of each acreage soil. This is due to a round error because we only show the acres of each soil with two decimal.

Capability Legend

Increased Limitations and Hazards

Decreased Adaptability and Freedom of Choice Users

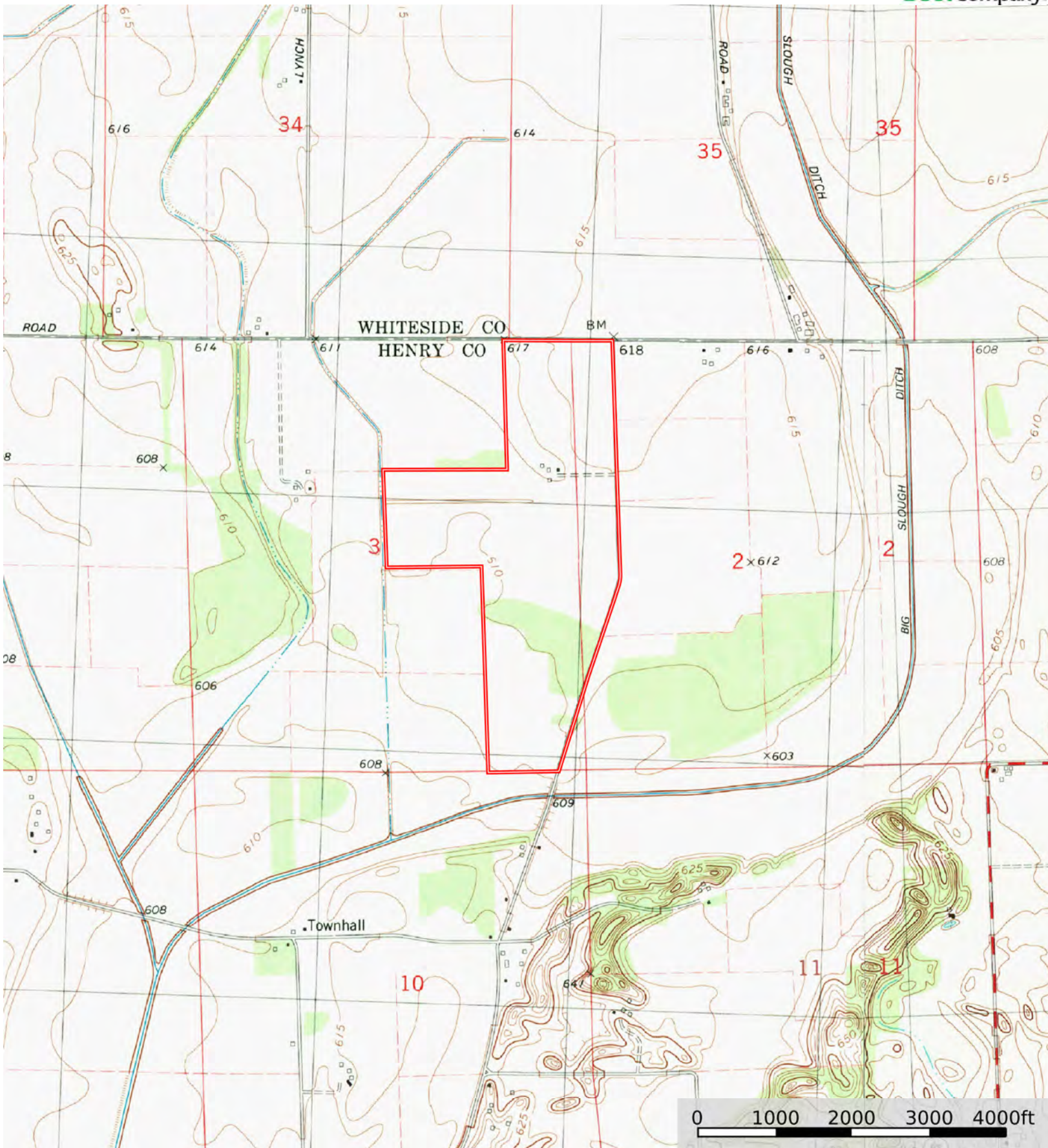
Land, Capability

								
	1	2	3	4	5	6	7	8
'Wild Life'	•	•	•	•	•	•	•	•
Forestry	•	•	•	•	•	•	•	
Limited	•	•	•	•	•	•	•	
Moderate	•	•	•	•	•	•		
Intense	•	•	•	•	•			
Limited	•	•	•	•				
Moderate	•	•	•					
Intense	•	•						
Very Intense	•							

Grazing Cultivation

(c) climatic limitations (e) susceptibility to erosion

(s) soil limitations within the rooting zone (w) excess of water



Boundary