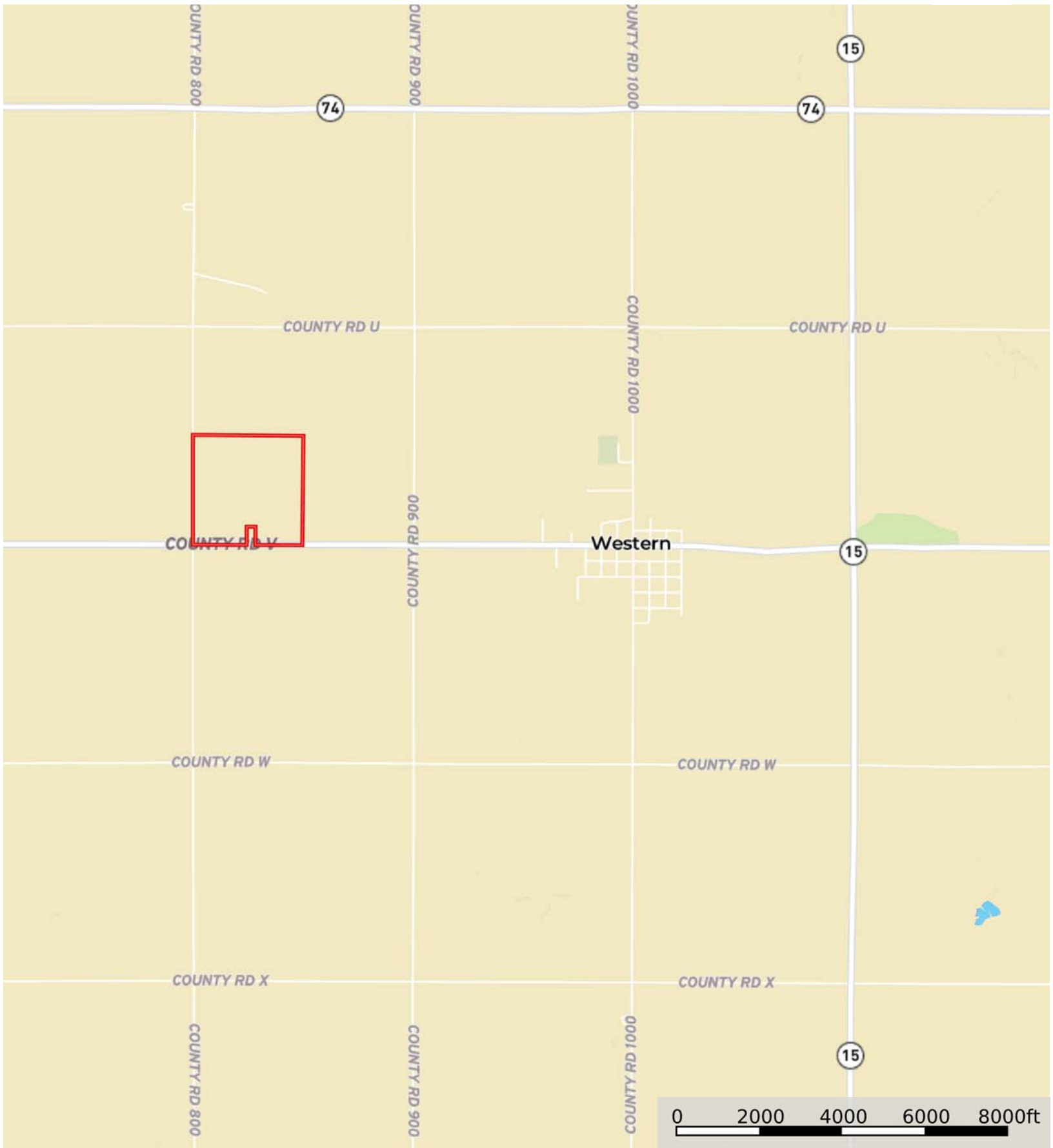
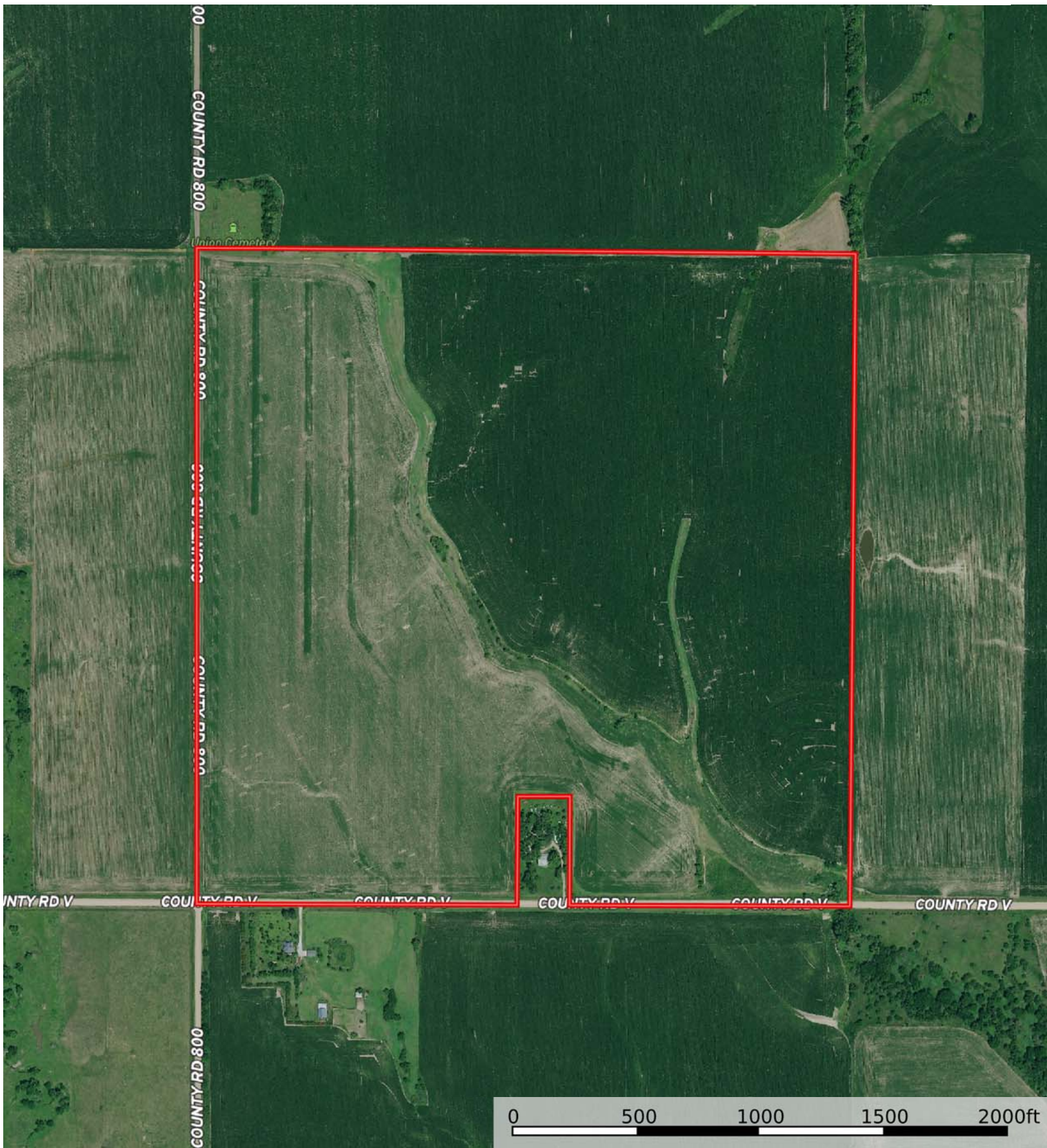


A-8224
Saline County, Nebraska, 158.66 AC +/-



 Boundary



 Boundary



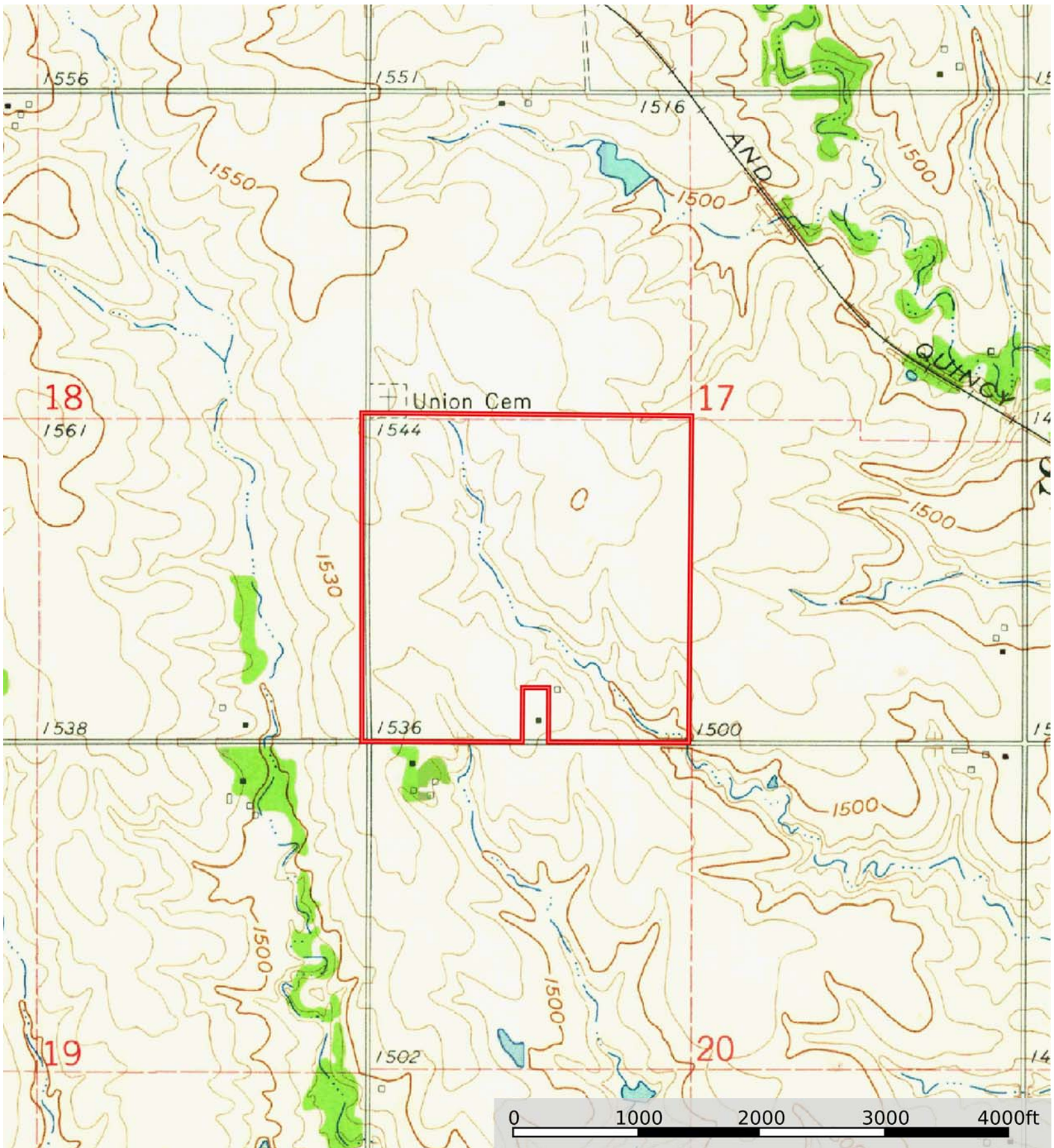
 Boundary

Boundary 159.96 ac

SOIL CODE	SOIL DESCRIPTION	ACRES	%	CPI	NCCPI	CAP
3825	Crete silt loam, 1 to 3 percent slopes	73.4	45.89	0	63	2e
3831	Crete silty clay loam, 3 to 7 percent slopes, eroded	51.57	32.24	0	54	3e
4182	Longford silty clay loam, 7 to 11 percent slopes, eroded	21.21	13.26	0	57	4e
3962	Hastings silty clay loam, 7 to 11 percent slopes, eroded	7.11	4.44	0	58	4e
3824	Crete silt loam, 0 to 1 percent slopes	6.66	4.16	0	64	2s
3870	Hastings silty clay loam, 3 to 7 percent slopes, eroded	0.01	0.01	0	59	3e
TOTALS		159.96(*)	100%	-	59.12	2.68

(*) Total acres may differ in the second decimal compared to the sum of each acreage soil. This is due to a round error because we only show the acres of each soil with two decimal.





 Boundary