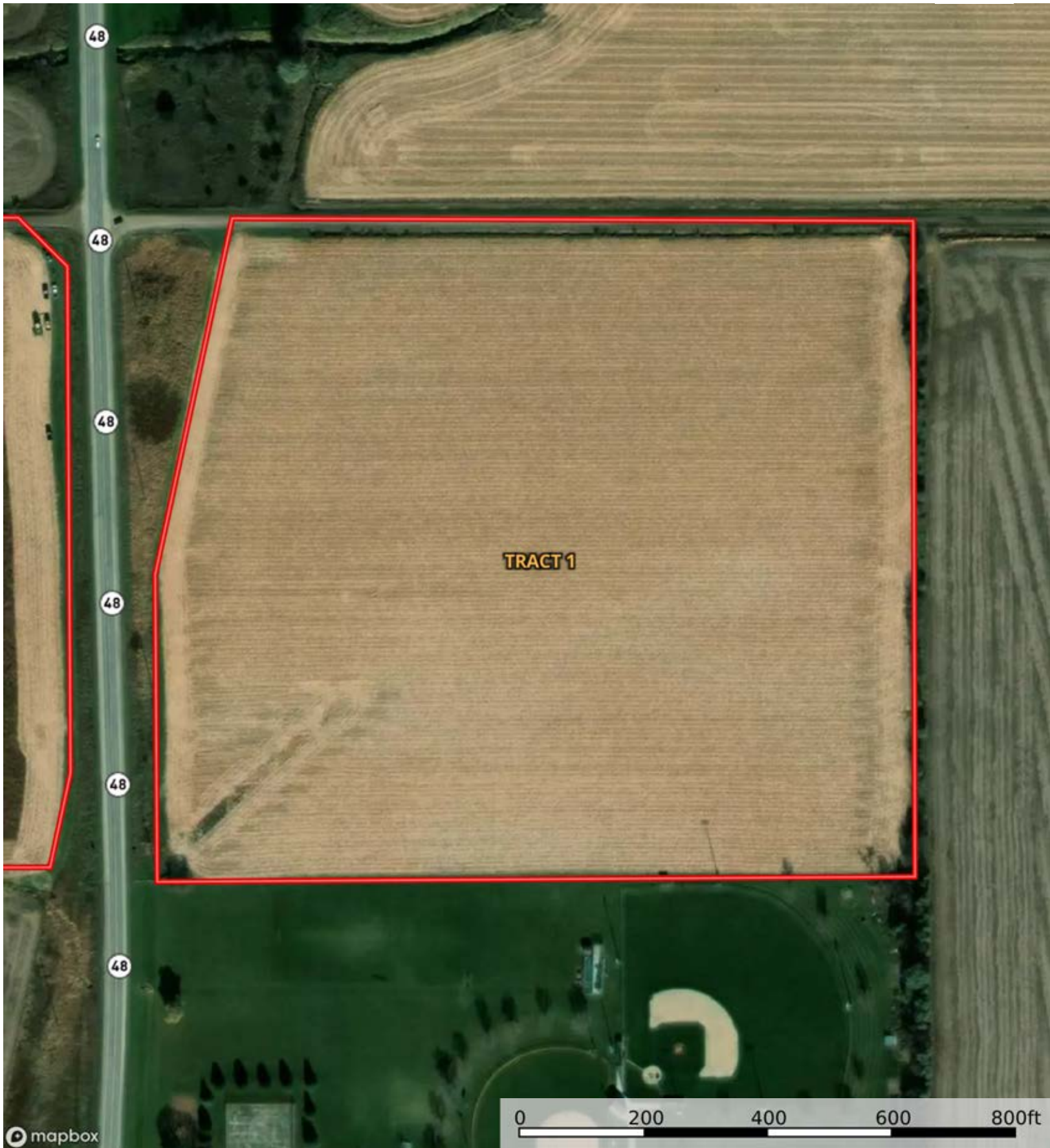



 Boundary



 Boundary



 Boundary


|  Boundary 29.18 ac

SOIL CODE	SOIL DESCRIPTION	ACRES	%	CSR2	CPI	NCCPI	CAP
88	Nevin silty clay loam, 0 to 2 percent slopes, rarely flooded	16.74	57.37	95.0	0	99	1
43	Bremer silty clay loam, 0 to 2 percent slopes, rarely flooded	12.44	42.63	79.0	0	84	2w
TOTALS		29.18(*)	100%	88.18	-	92.61	1.43


(\*) Total acres may differ in the second decimal compared to the sum of each acreage soil. This is due to a round error because we only show the acres of each soil with two decimal.





 Boundary



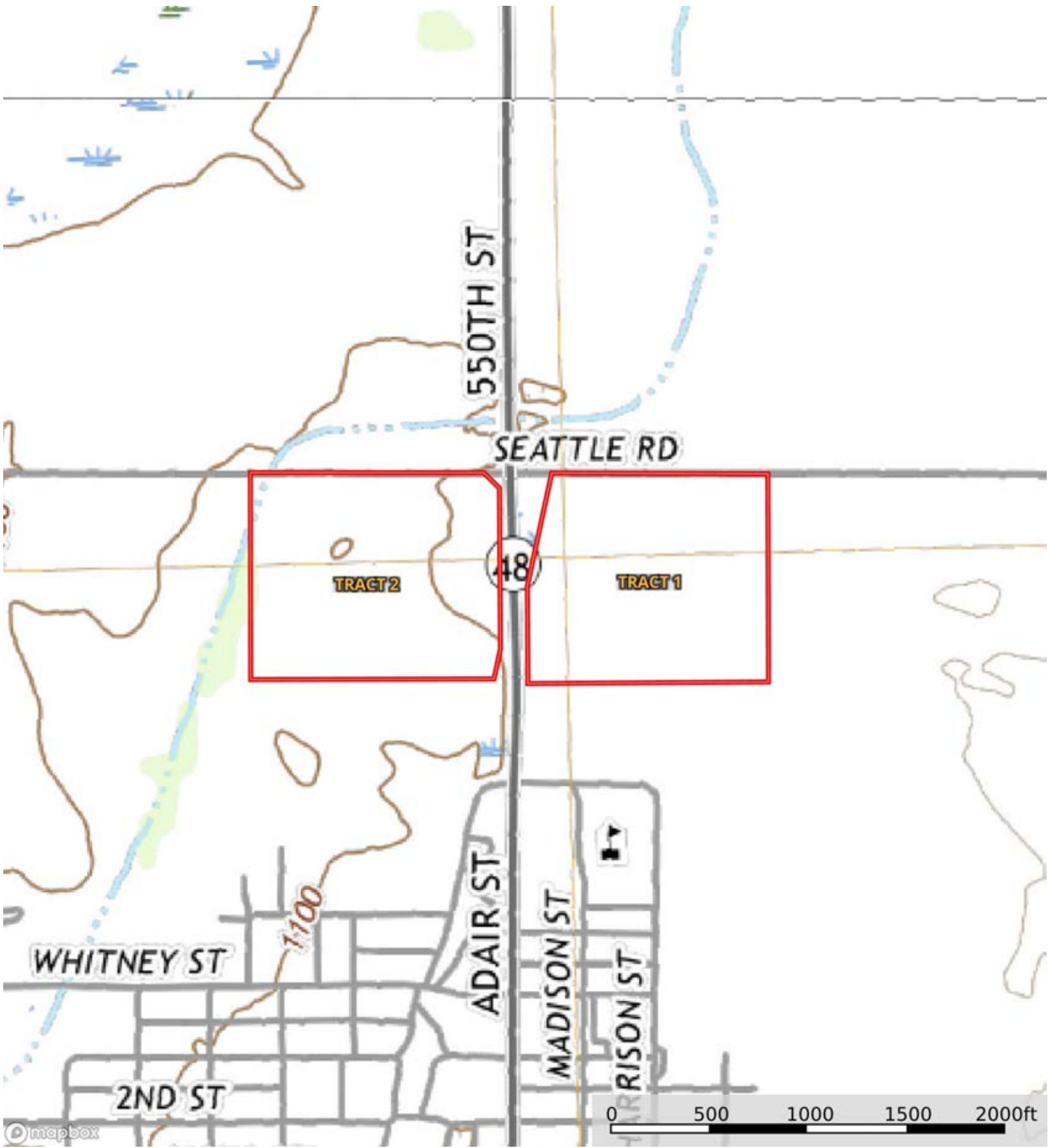
 Boundary

|  Boundary 30.54 ac

SOIL CODE	SOIL DESCRIPTION	ACRES	%	CSR2	CPI	NCCPI	CAP
43	Bremer silty clay loam, 0 to 2 percent slopes, rarely flooded	21.64	70.86	79.0	0	84	2w
88	Nevin silty clay loam, 0 to 2 percent slopes, rarely flooded	8.7	28.49	95.0	0	99	1
7B	Wiota silty clay loam, 2 to 5 percent slopes, rarely flooded	0.2	0.65	95.0	0	96	2e
TOTALS		30.54(*)	100%	83.66	-	88.35	1.72

(\*) Total acres may differ in the second decimal compared to the sum of each acreage soil. This is due to a round error because we only show the acres of each soil with two decimal.





 Boundary