

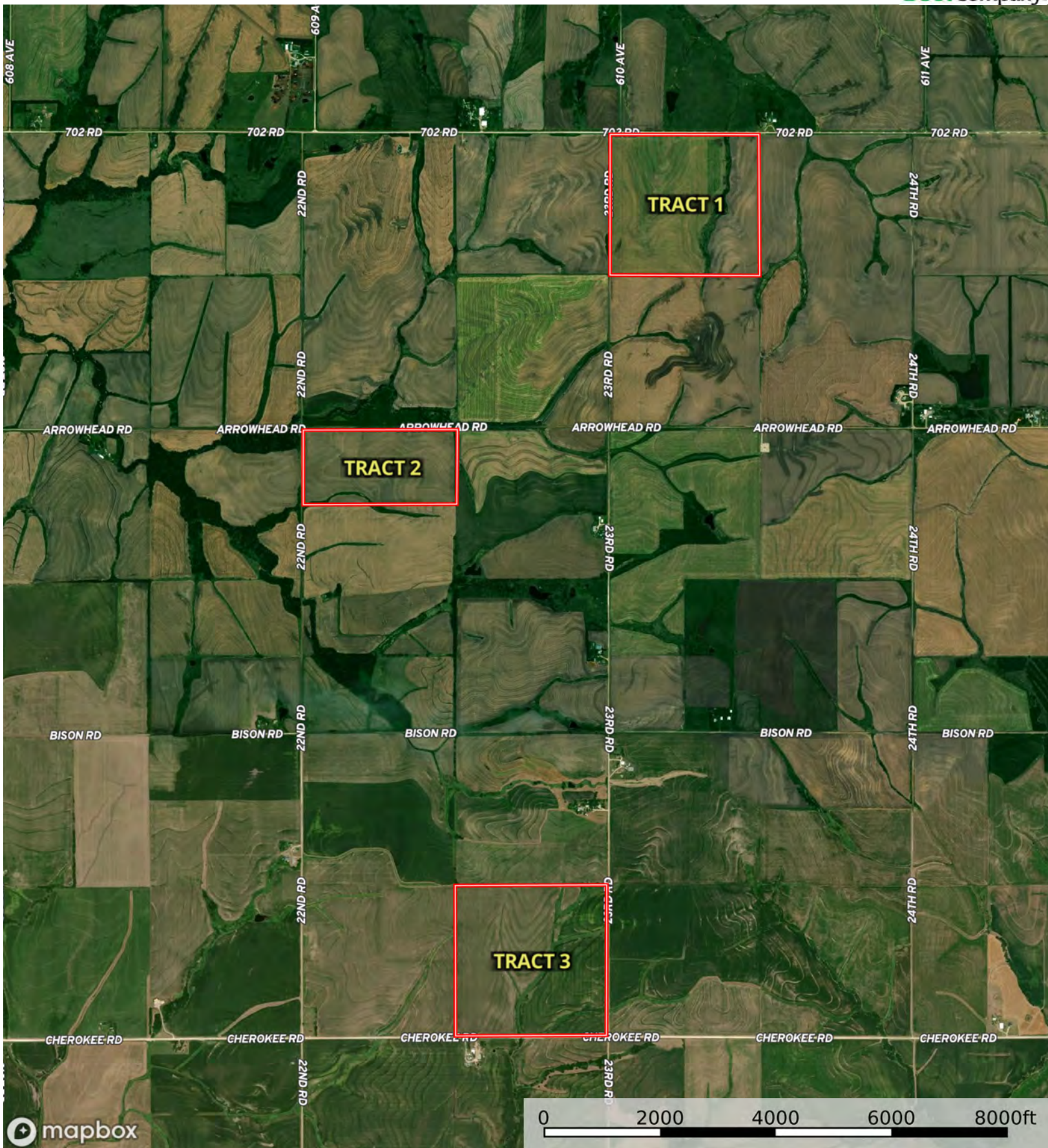


Boundary



A12984

Marshall County, Kansas, 387.57 AC +/-



Boundary

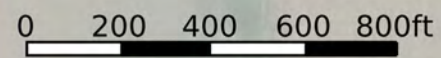
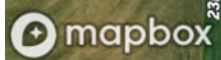
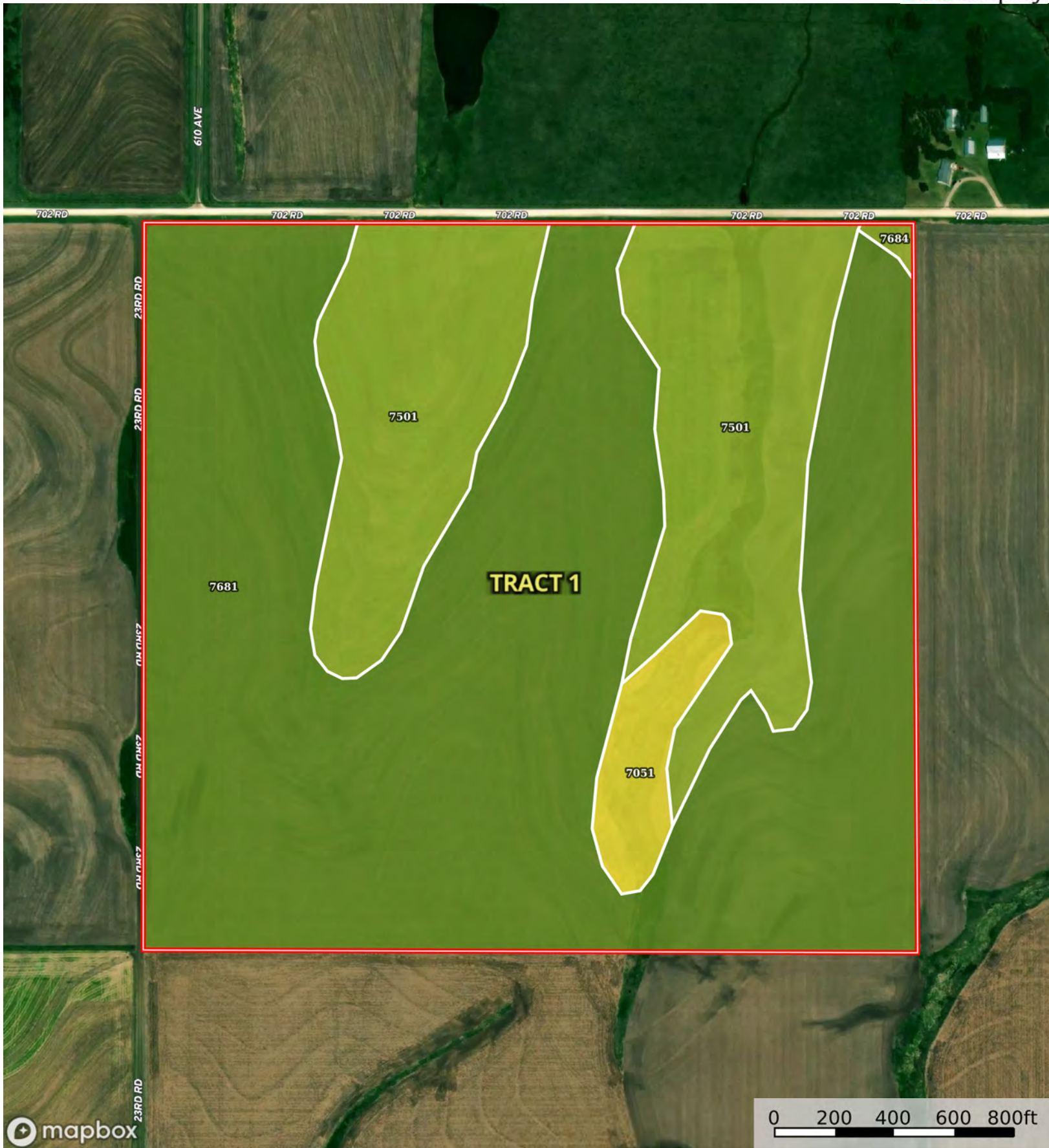


The information contained herein was obtained from sources deemed to be reliable. Land id™ Services makes no warranties or guarantees as to the completeness or accuracy thereof.



A12984

Marshall County, Kansas, 387.57 AC +/-



Boundary



The information contained herein was obtained from sources deemed to be reliable. Land id™ Services makes no warranties or guarantees as to the completeness or accuracy thereof.

| Boundary 144.78 ac

SOIL CODE	SOIL DESCRIPTION	ACRES	%	CPI	NCCPI	CAP
7681	Wymore silty clay loam, 1 to 3 percent slopes	101.09	69.82	0	64	2e
7501	Pawnee clay loam, 4 to 8 percent slopes, eroded	38.57	26.64	0	44	3e
7051	Kennebec silt loam, frequently flooded	4.73	3.27	0	66	5w
7684	Wymore silty clay loam, 3 to 6 percent slopes, eroded	0.39	0.27	0	61	3e
TOTALS		144.78(*)	100%	-	58.73	2.37

(\*) Total acres may differ in the second decimal compared to the sum of each acreage soil. This is due to a round error because we only show the acres of each soil with two decimal.





A12984

Marshall County, Kansas, 387.57 AC +/-



Boundary

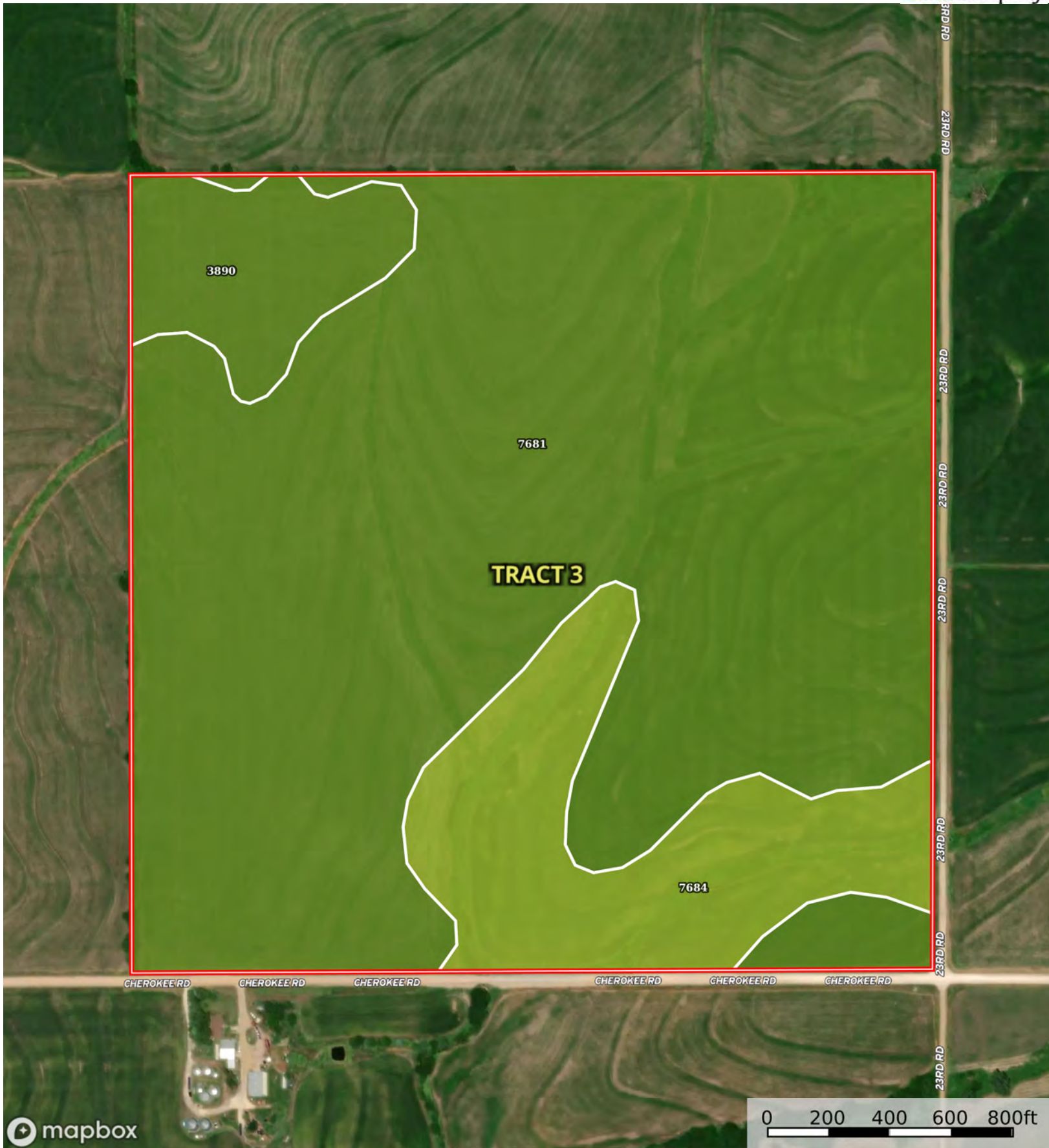
| Boundary 79.09 ac

SOIL CODE	SOIL DESCRIPTION	ACRES	%	CPI	NCCPI	CAP
7681	Wymore silty clay loam, 1 to 3 percent slopes	71.96	90.98	0	64	2e
7684	Wymore silty clay loam, 3 to 6 percent slopes, eroded	6.64	8.4	0	61	3e
7050	Kennebec silt loam, occasionally flooded	0.49	0.62	0	94	2w
TOTALS		79.09(*)	100%	-	63.93	2.08

(\*) Total acres may differ in the second decimal compared to the sum of each acreage soil. This is due to a round error because we only show the acres of each soil with two decimal.







Boundary

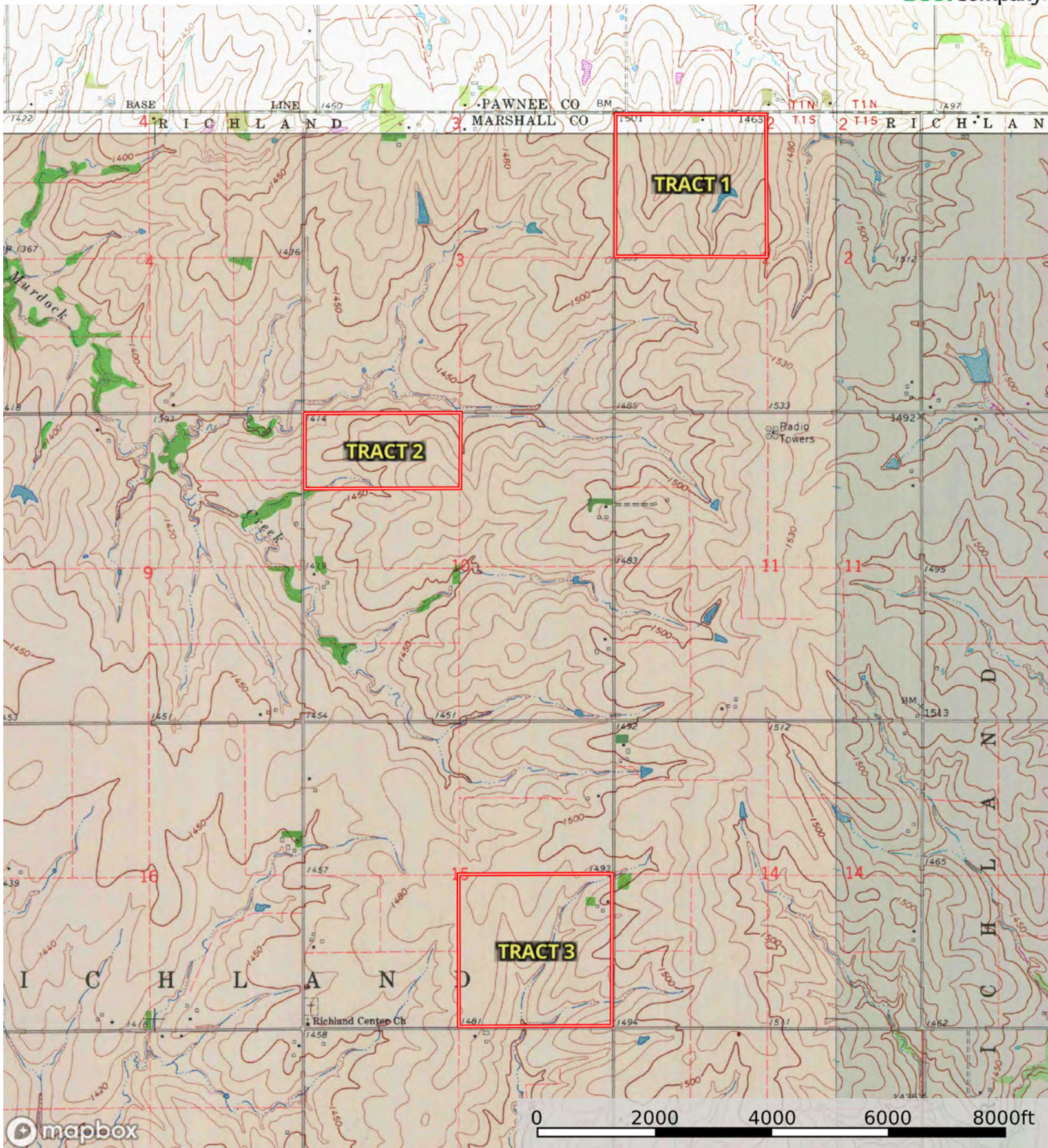
| Boundary 157.08 ac

SOIL CODE	SOIL DESCRIPTION	ACRES	%	CPI	NCCPI	CAP
7681	Wymore silty clay loam, 1 to 3 percent slopes	123.2 2	78.45	0	64	2e
7684	Wymore silty clay loam, 3 to 6 percent slopes, eroded	23.35	14.87	0	61	3e
3890	Ladysmith silty clay loam, 0 to 1 percent slopes	10.51	6.69	0	53	2s
TOTALS		157.0 8(*)	100%	-	62.82	2.15

(\*) Total acres may differ in the second decimal compared to the sum of each acreage soil. This is due to a round error because we only show the acres of each soil with two decimal.







Boundary