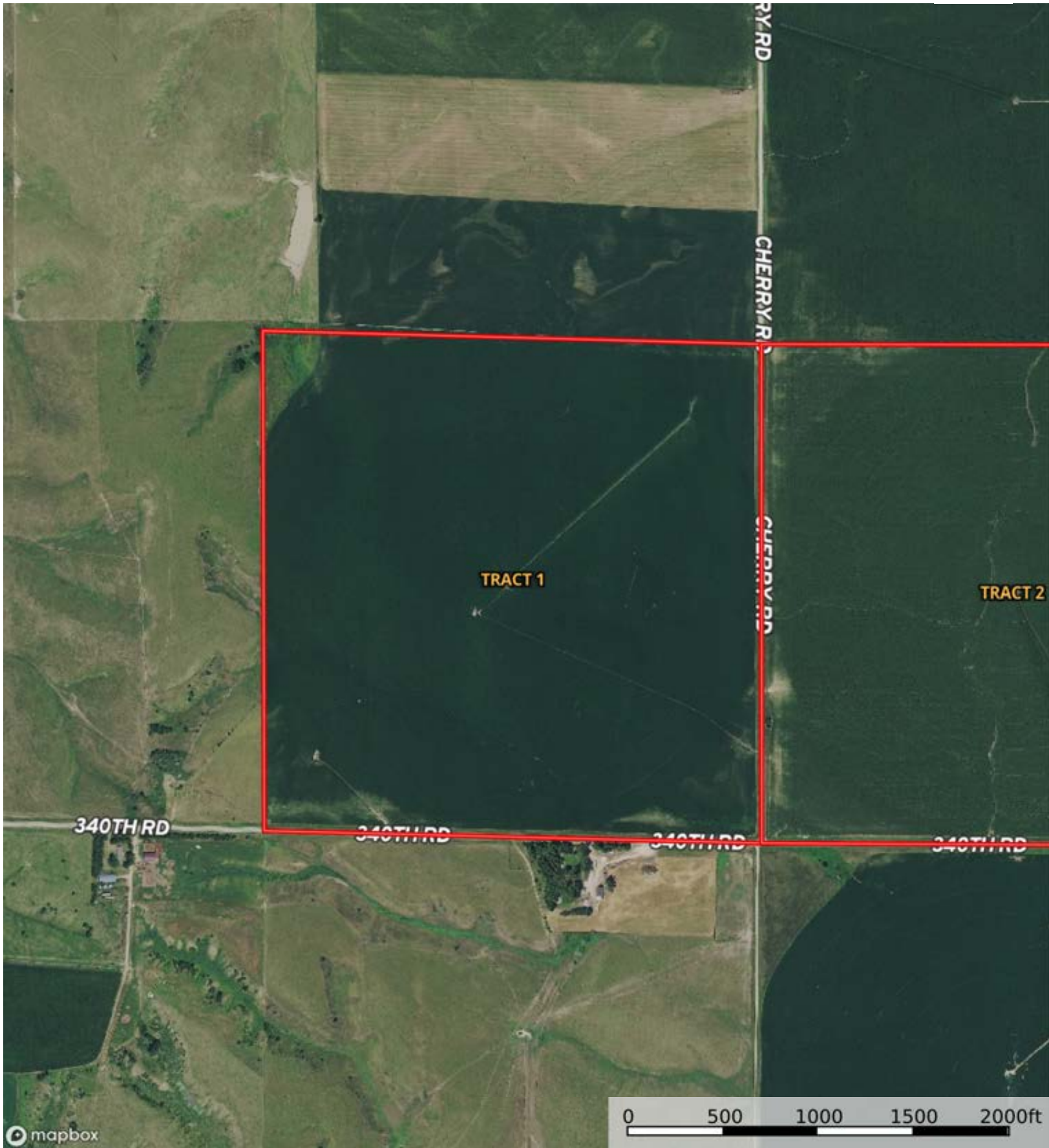


A17661  
Buffalo County, Nebraska, 480 AC +/-

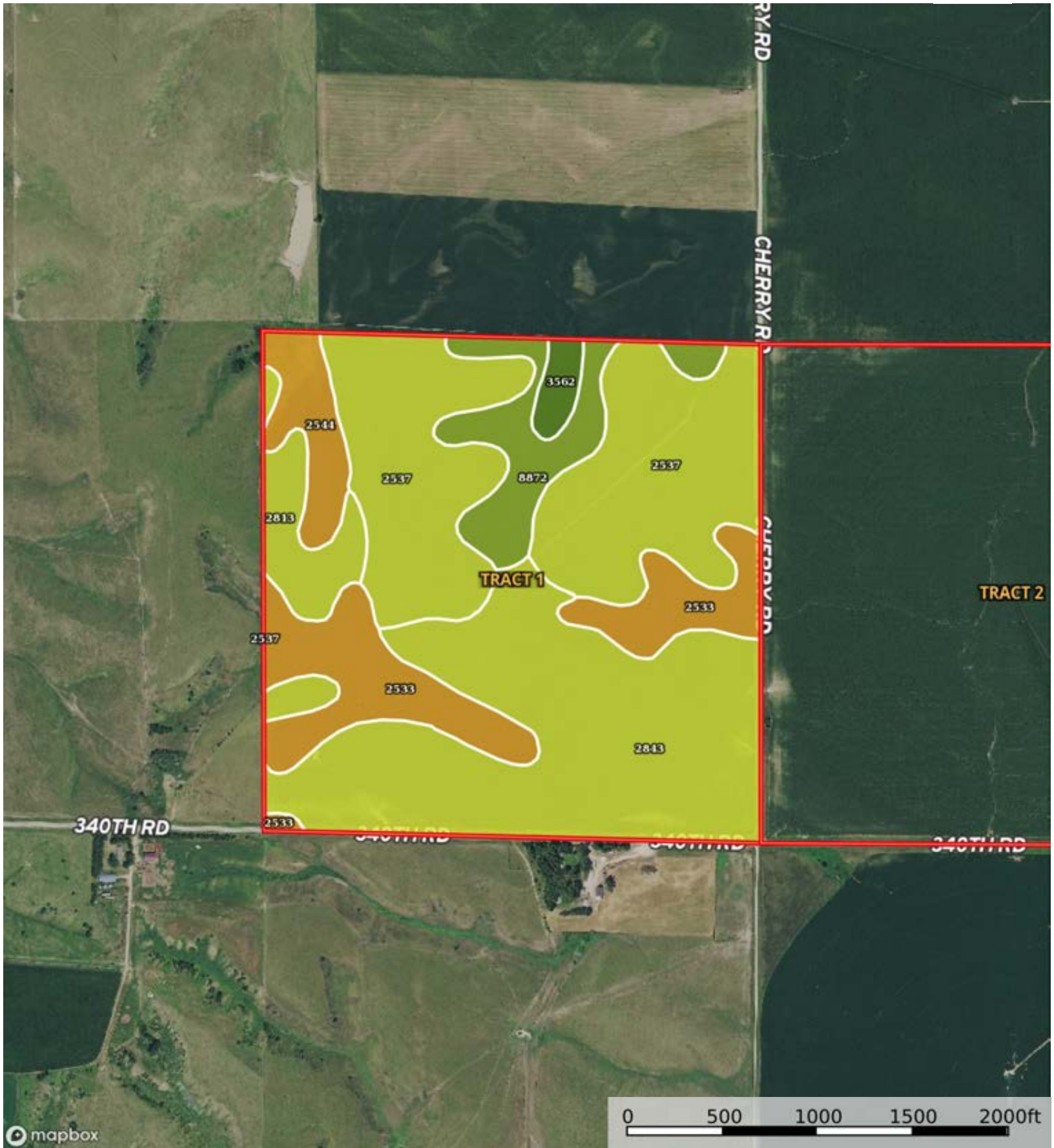


 Boundary



 Boundary





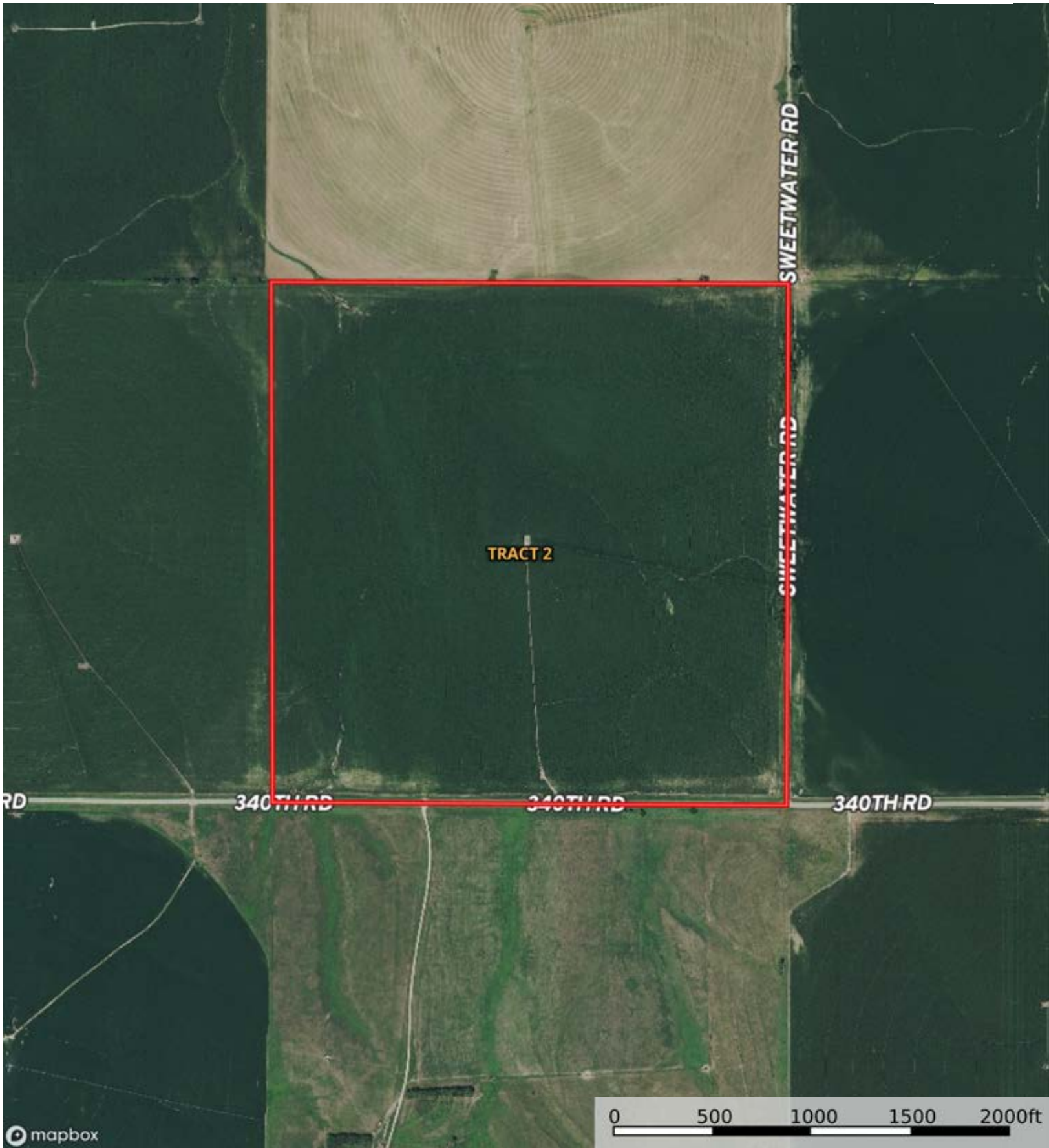
 Boundary

|  Boundary 158.08 ac

SOIL CODE	SOIL DESCRIPTION	ACRES	%	CPI	NCCPI	CAP
2843	Uly, Holdrege and Coly soils, 6 to 11 percent slopes, eroded	55.39	35.04	0	65	4e
2537	Coly silt loam, 6 to 11 percent slopes	51.85	32.8	0	67	4e
2533	Coly silt loam, 11 to 30 percent slopes	22.45	14.2	0	57	6e
8872	Hord silt loam, 3 to 6 percent slopes	12.1	7.65	0	71	3e
2544	Coly, Uly and Hobbs soils, 3 to 30 percent slopes	7.01	4.43	0	56	6e
2813	Uly and Holdrege silt loams, 6 to 11 percent slopes	6.99	4.42	0	73	4e
3562	Hobbs silt loam, occasionally flooded, cool	2.29	1.45	0	74	2w
TOTALS		158.08(*)	100%	-	65.06	4.27

(\*) Total acres may differ in the second decimal compared to the sum of each acreage soil. This is due to a round error because we only show the acres of each soil with two decimal.





 Boundary





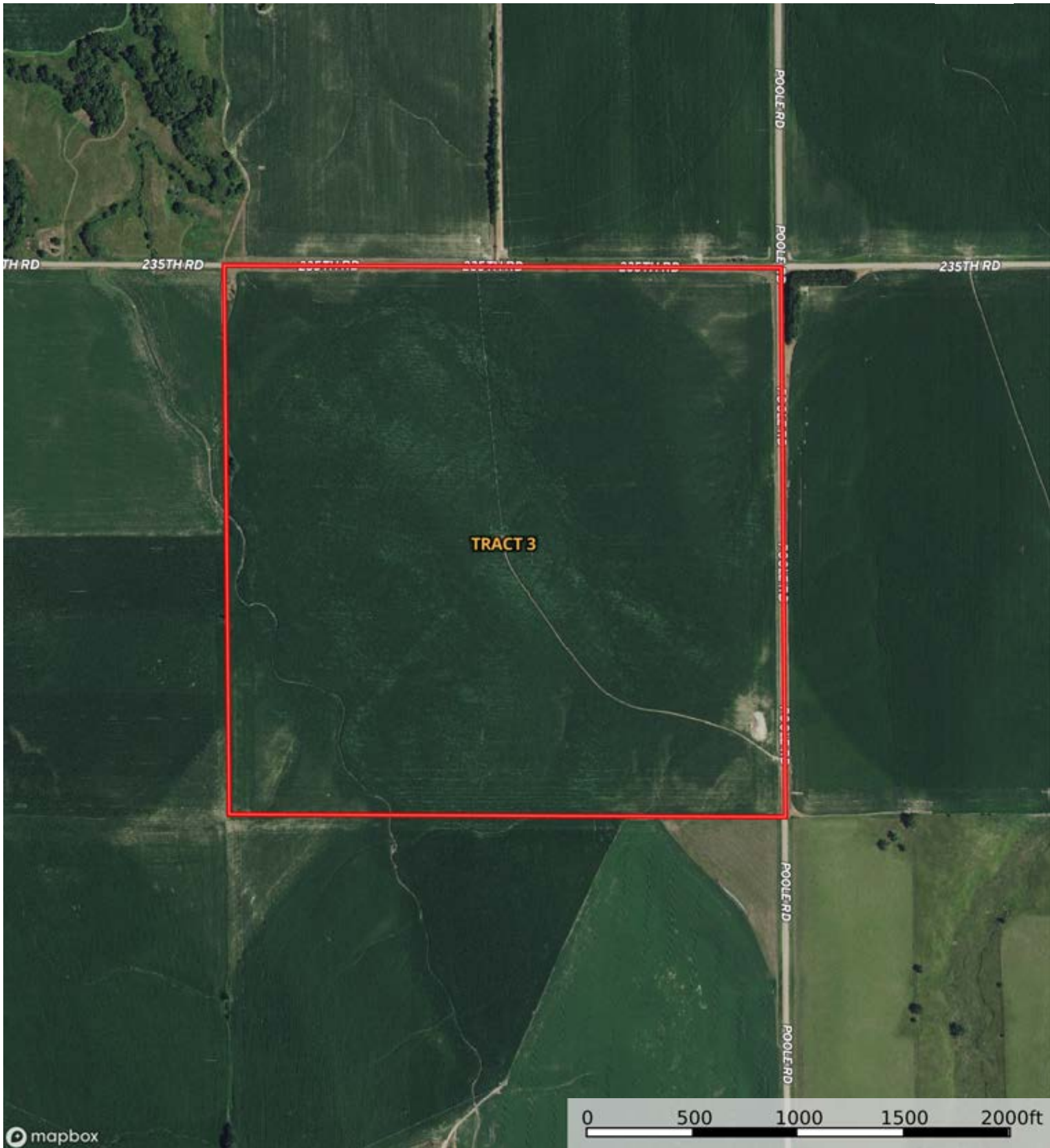
 Boundary

|  Boundary 158.19 ac

SOIL CODE	SOIL DESCRIPTION	ACRES	%	CPI	NCCPI	CAP
2843	Uly, Holdrege and Coly soils, 6 to 11 percent slopes, eroded	56.01	35.4	0	65	4e
2537	Coly silt loam, 6 to 11 percent slopes	55.48	35.07	0	67	4e
3562	Hobbs silt loam, occasionally flooded, cool	27.68	17.5	0	74	2w
2533	Coly silt loam, 11 to 30 percent slopes	9.36	5.92	0	57	6e
8872	Hord silt loam, 3 to 6 percent slopes	5.78	3.65	0	71	3e
2544	Coly, Uly and Hobbs soils, 3 to 30 percent slopes	3.36	2.12	0	56	6e
2671	Holdrege silt loam, 3 to 7 percent slopes, eroded	0.52	0.33	0	67	2e
TOTALS		158.2(*)	100%	-	66.83	3.77

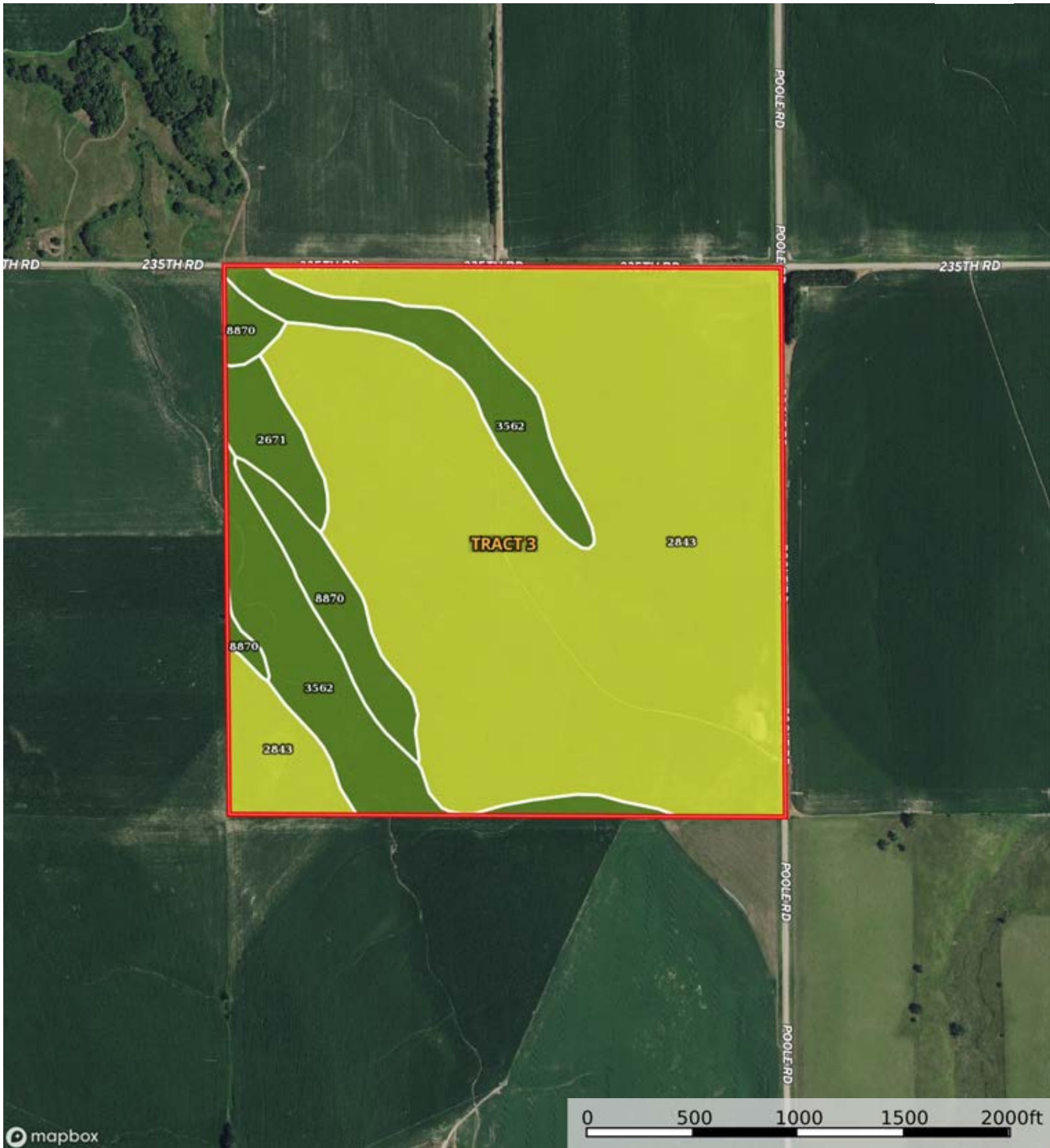
(\*) Total acres may differ in the second decimal compared to the sum of each acreage soil. This is due to a round error because we only show the acres of each soil with two decimal.





 Boundary





Boundary

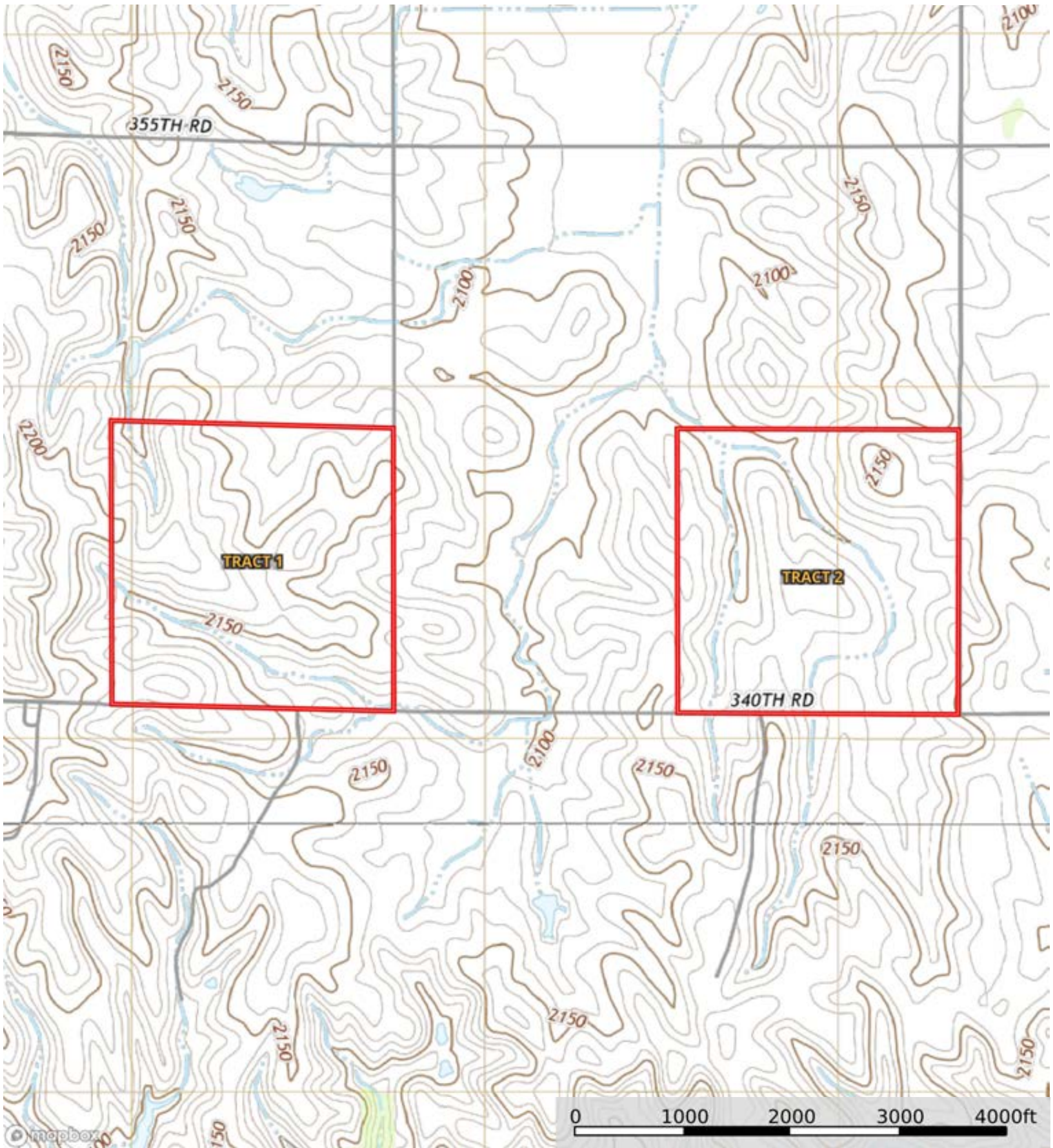
|  Boundary 157.7 ac

SOIL CODE	SOIL DESCRIPTION	ACRES	%	CPI	NCCPI	CAP
2843	Uly, Holdrege and Coly soils, 6 to 11 percent slopes, eroded	120.75	76.56	0	65	4e
3562	Hobbs silt loam, occasionally flooded, cool	23.63	14.98	0	74	2w
8870	Hord silt loam, 1 to 3 percent slopes	8.66	5.49	0	75	2e
2671	Holdrege silt loam, 3 to 7 percent slopes, eroded	4.66	2.95	0	67	2e
TOTALS		157.71(*)	100%	-	66.95	3.53

(\*) Total acres may differ in the second decimal compared to the sum of each acreage soil. This is due to a round error because we only show the acres of each soil with two decimal.

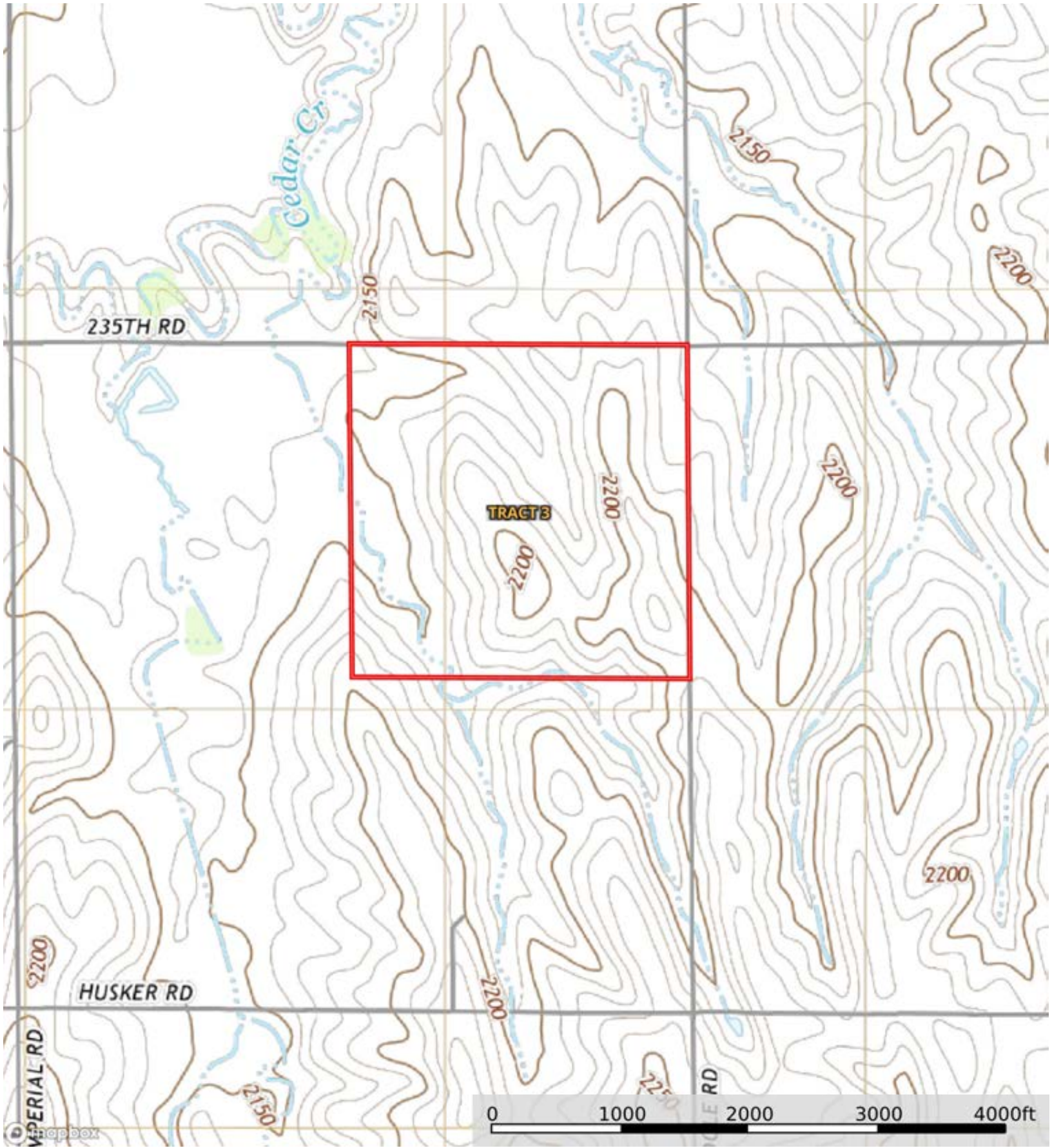






 Boundary





 Boundary