




 Boundary





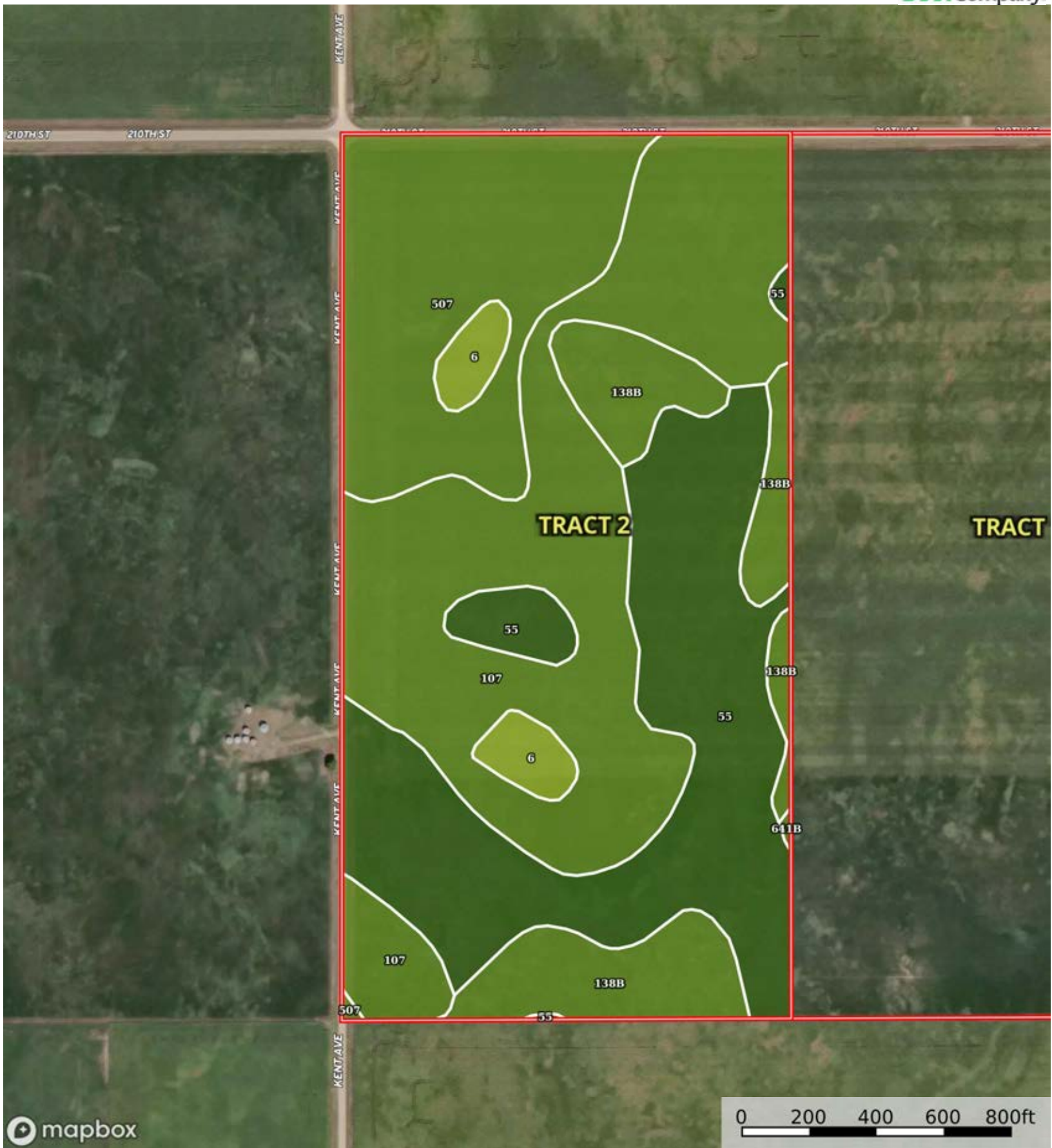
 Boundary


|  Boundary 80.55 ac

| SOIL CODE | SOIL DESCRIPTION | ACRES | % | CSR2 | CPI | NCCPI | CAP |
|-----------|---|----------|-------|-------|-----|-------|-----|
| 107 | Webster clay loam, 0 to 2 percent slopes | 31.09 | 38.6 | 86.0 | 0 | 83 | 2w |
| 55 | Nicollet clay loam, 1 to 3 percent slopes | 22.56 | 28.01 | 89.0 | 0 | 81 | 1 |
| 138B | Clarion loam, 2 to 6 percent slopes | 14.13 | 17.54 | 89.0 | 0 | 83 | 2e |
| 641C2 | Clarion-Sunburg complex, 5 to 9 percent slopes, moderately eroded | 5.69 | 7.06 | 71.0 | 0 | 65 | 3e |
| 641B | Clarion-Sunburg complex, 2 to 5 percent slopes | 5.35 | 6.64 | 79.0 | 0 | 70 | 2e |
| 138C2 | Clarion loam, 6 to 10 percent slopes, moderately eroded | 0.99 | 1.23 | 83.0 | 0 | 69 | 3e |
| 507 | Canisteo clay loam, 0 to 2 percent slopes | 0.74 | 0.92 | 84.0 | 0 | 82 | 2w |
| TOTALS | | 80.55(*) | 100% | 85.79 | - | 80.12 | 1.8 |

(*) Total acres may differ in the second decimal compared to the sum of each acreage soil. This is due to a round error because we only show the acres of each soil with two decimal.





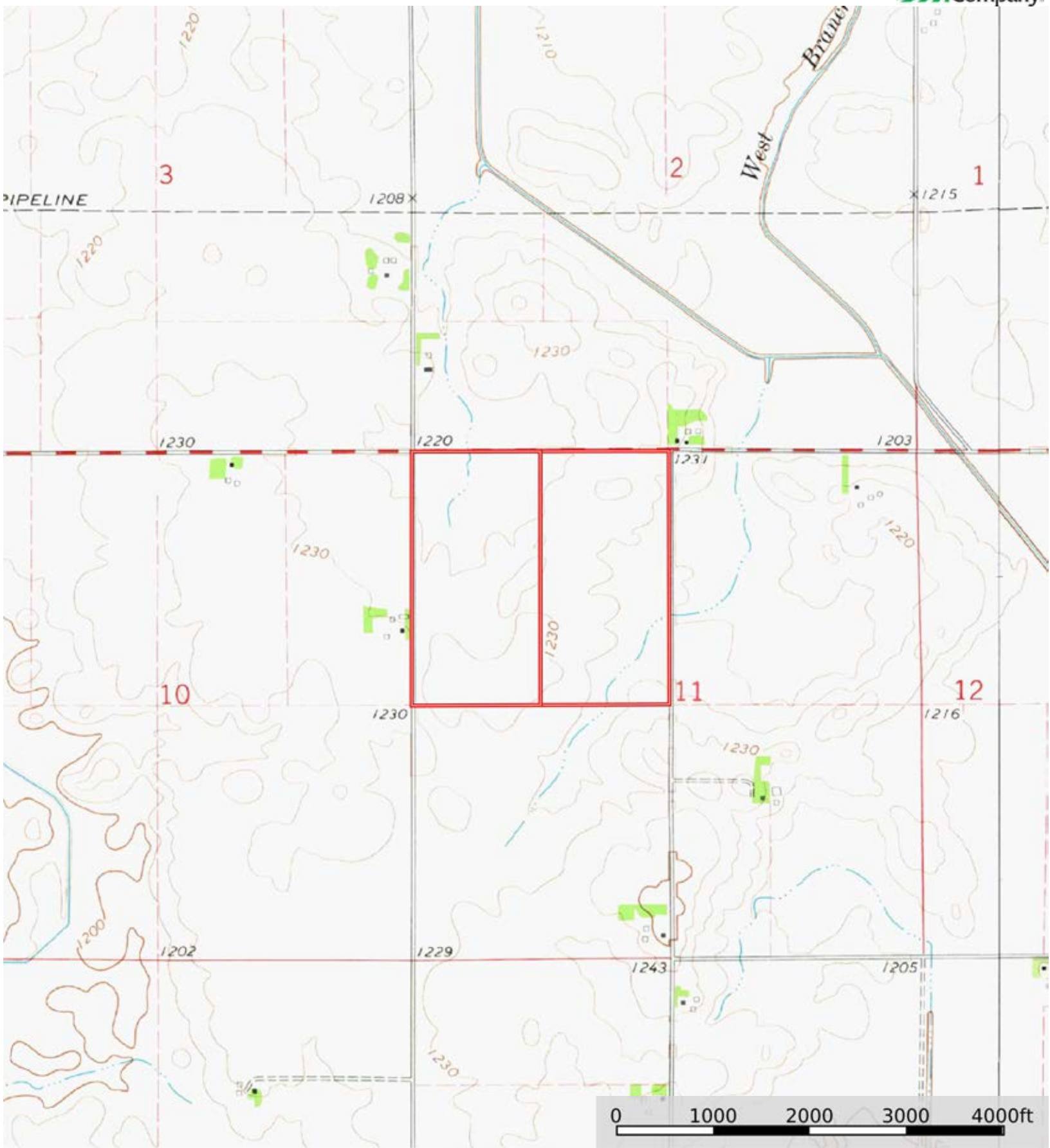
 Boundary

|  Boundary 80.64 ac

| SOIL CODE | SOIL DESCRIPTION | ACRES | % | CSR2 | CPI | NCCPI | CAP |
|-----------|--|----------|-------|------|-----|-------|------|
| 107 | Webster clay loam, 0 to 2 percent slopes | 29.23 | 36.24 | 86.0 | 0 | 83 | 2w |
| 55 | Nicollet clay loam, 1 to 3 percent slopes | 23.73 | 29.42 | 89.0 | 0 | 81 | 1 |
| 507 | Canisteo clay loam, 0 to 2 percent slopes | 15.64 | 19.39 | 84.0 | 0 | 82 | 2w |
| 138B | Clarion loam, 2 to 6 percent slopes | 9.77 | 12.11 | 89.0 | 0 | 83 | 2e |
| 6 | Okoboji silty clay loam, 0 to 1 percent slopes | 2.21 | 2.74 | 59.0 | 0 | 76 | 3w |
| 641B | Clarion-Sunburg complex, 2 to 5 percent slopes | 0.06 | 0.07 | 79.0 | 0 | 70 | 2e |
| TOTALS | | 80.64(*) | 100% | 86.1 | - | 82.01 | 1.73 |

(*) Total acres may differ in the second decimal compared to the sum of each acreage soil. This is due to a round error because we only show the acres of each soil with two decimal.





 Boundary