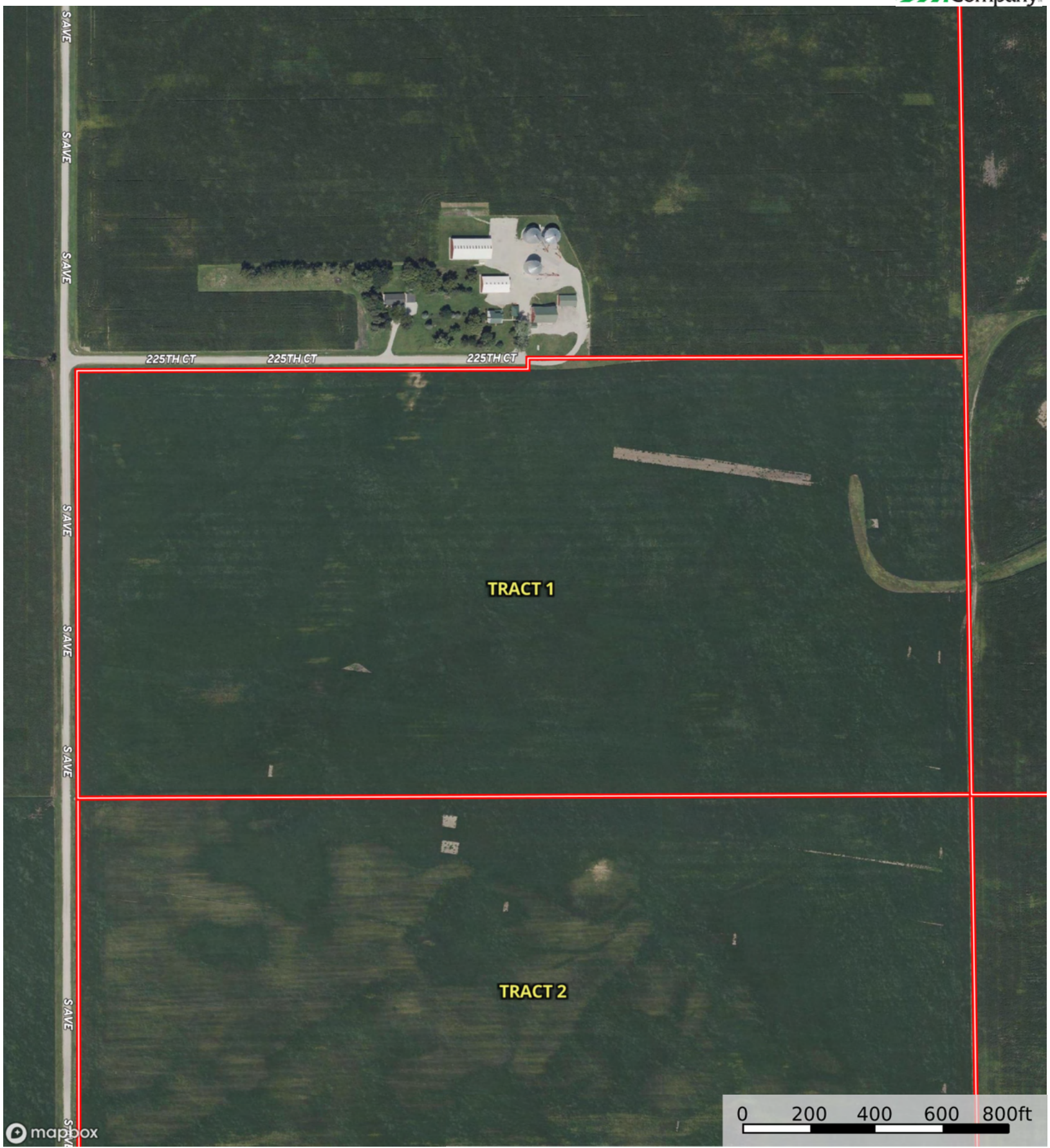
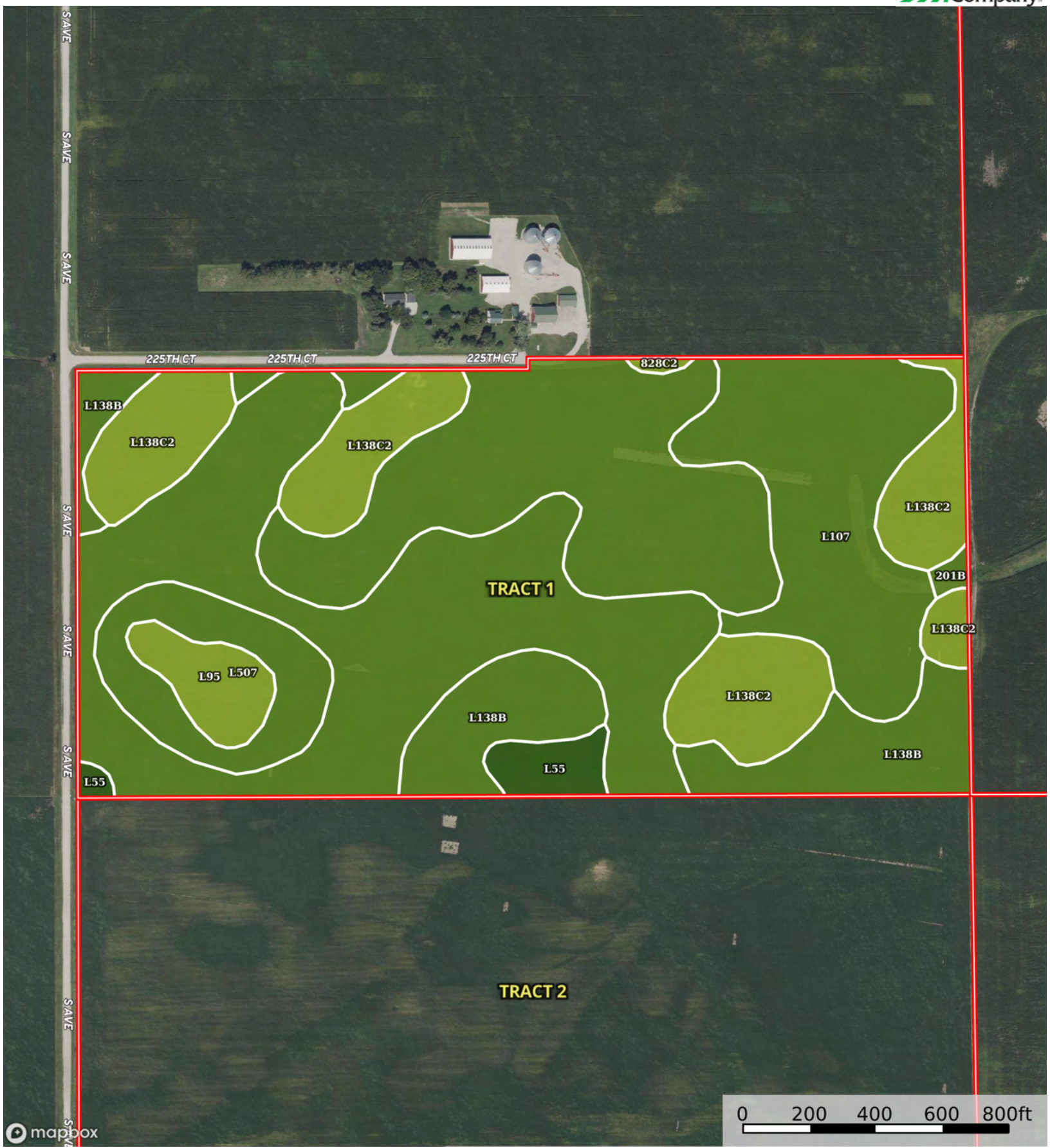


mapbox

Boundary



 Boundary



Boundary


Boundary 80.67 ac

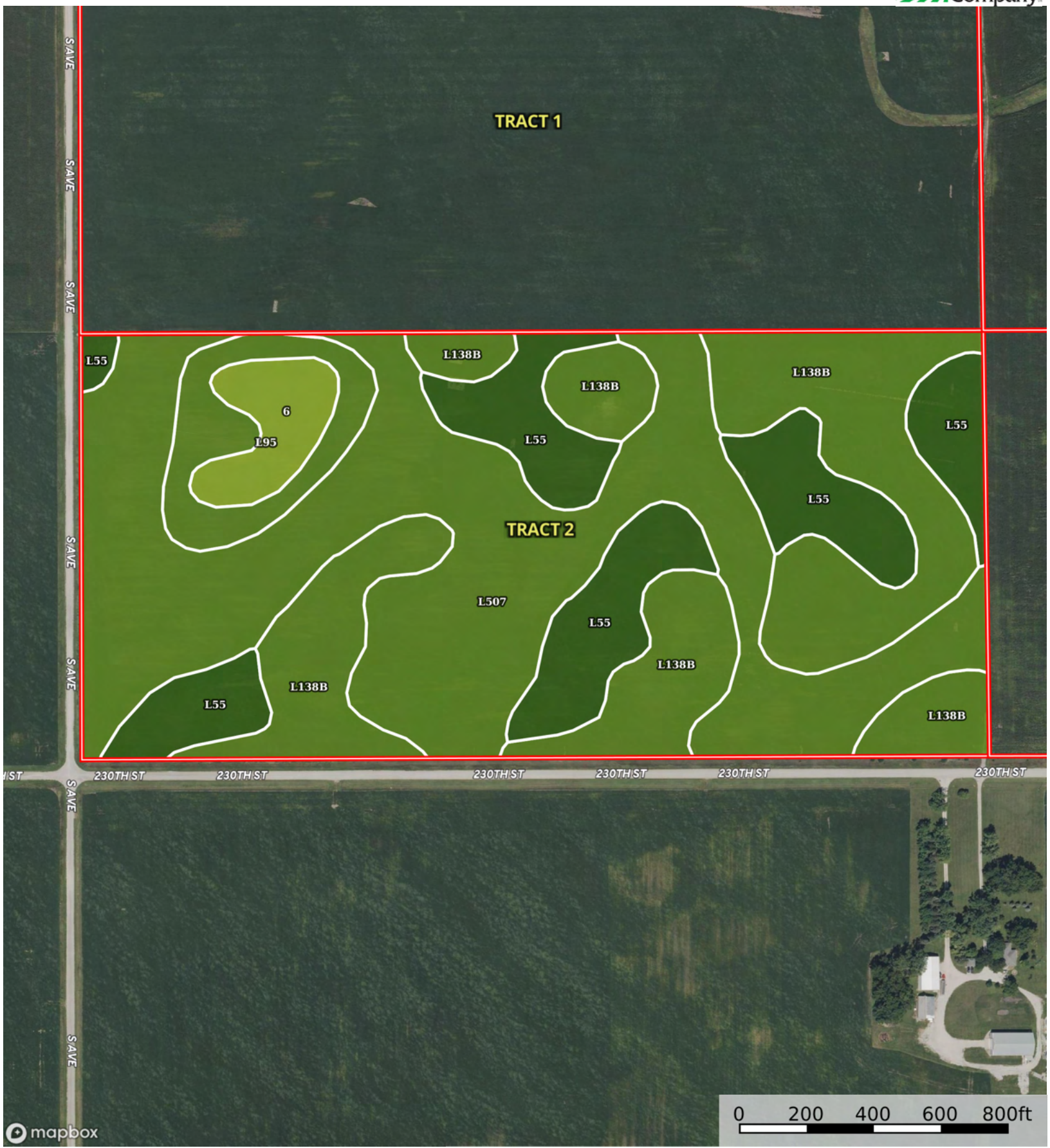
SOIL CODE	SOIL DESCRIPTION	ACRES	%	CSR2	CPI	NCCPI	CAP
L138B	Clarion loam, Bemis moraine, 2 to 6 percent slopes	25.23	31.28	88.0	0	80	2e
L507	Canisteo clay loam, Bemis moraine, 0 to 2 percent slopes	22.39	27.76	87.0	0	81	2w
L138C2	Clarion loam, Bemis moraine, 6 to 10 percent slopes, moderately eroded	12.49	15.48	83.0	0	62	3e
L107	Webster clay loam, Bemis moraine, 0 to 2 percent slopes	11.77	14.59	88.0	0	84	2w
L95	Harps clay loam, Bemis moraine, 0 to 2 percent slopes	4.59	5.69	75.0	0	81	2w
6	Okoboji silty clay loam, 0 to 1 percent slopes	2.17	2.69	59.0	0	76	3w
L55	Nicollet loam, 1 to 3 percent slopes	1.6	1.98	91.0	0	85	1
201B	Coland-Terril complex, 2 to 5 percent slopes	0.26	0.32	74.0	0	89	2w
828C2	Zenor sandy loam, 5 to 9 percent slopes, moderately eroded	0.17	0.21	45.0	0	46	3e
TOTALS		80.67(*)	100%	85.35	-	78.08	2.16

(\*) Total acres may differ in the second decimal compared to the sum of each acreage soil. This is due to a round error because we only show the acres of each soil with two decimal.





 Boundary



 Boundary

Boundary 79.06 ac

SOIL CODE	SOIL DESCRIPTION	ACRES	%	CSR2	CPI	NCCPI	CAP
L507	Canisteo clay loam, Bemis moraine, 0 to 2 percent slopes	33.05	41.79	87.0	0	81	2w
L138B	Clarion loam, Bemis moraine, 2 to 6 percent slopes	23.84	30.15	88.0	0	80	2e
L55	Nicollet loam, 1 to 3 percent slopes	15.33	19.39	91.0	0	85	1
L95	Harps clay loam, Bemis moraine, 0 to 2 percent slopes	4.09	5.17	75.0	0	81	2w
6	Okoboji silty clay loam, 0 to 1 percent slopes	2.75	3.48	59.0	0	76	3w
TOTALS		79.06(*)	100%	86.46	-	81.28	1.84

(\*) Total acres may differ in the second decimal compared to the sum of each acreage soil. This is due to a round error because we only show the acres of each soil with two decimal.

### Capability Legend

Increased Limitations and Hazards

Decreased Adaptability and Freedom of Choice Users

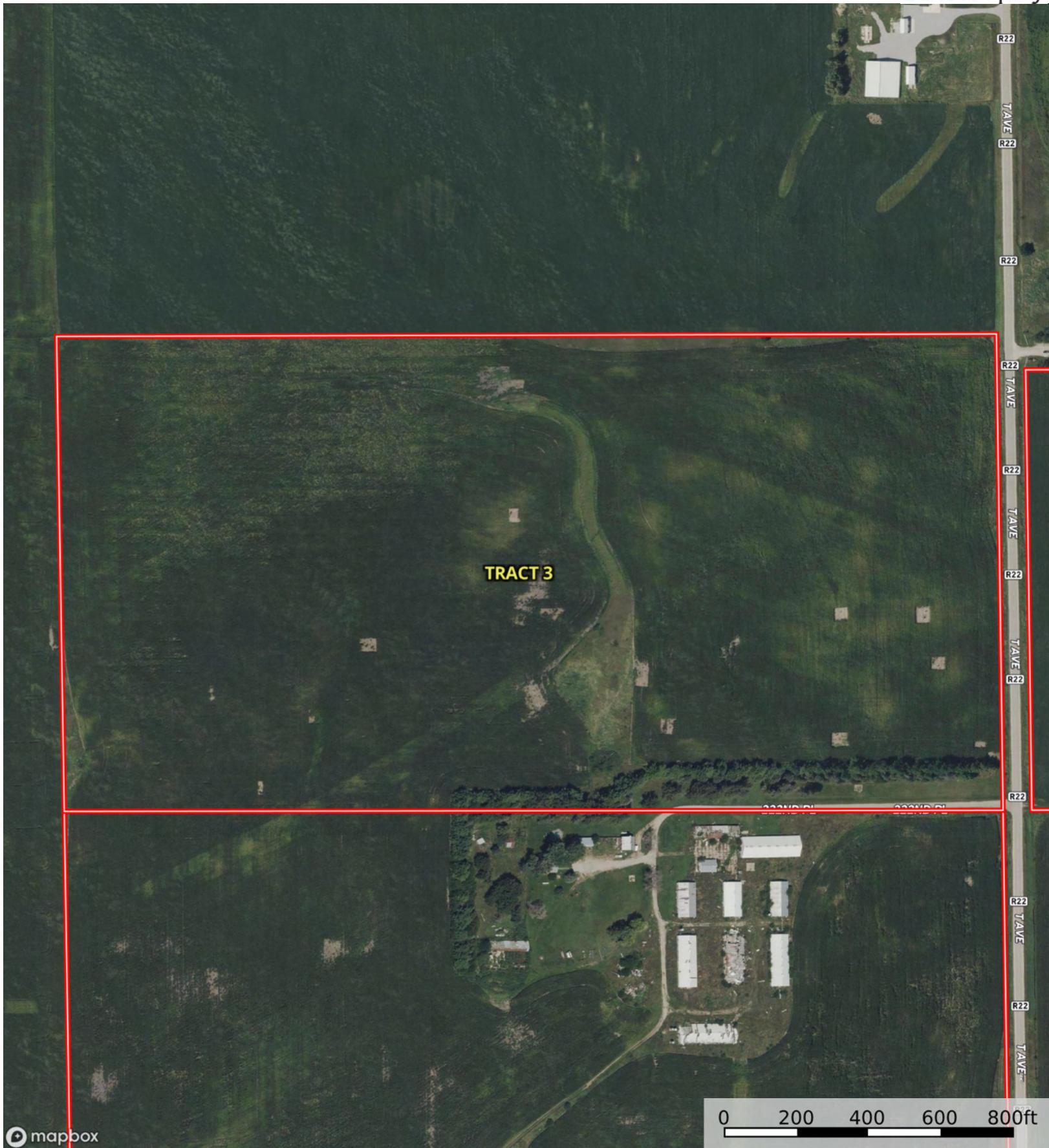
Land, Capability

	1	2	3	4	5	6	7	8
'Wild Life'	•	•	•	•	•	•	•	•
Forestry	•	•	•	•	•	•	•	
Limited	•	•	•	•	•	•	•	
Moderate	•	•	•	•	•	•		
Intense	•	•	•	•	•			
Limited	•	•	•	•				
Moderate	•	•	•					
Intense	•	•						
Very Intense	•							

### Grazing Cultivation

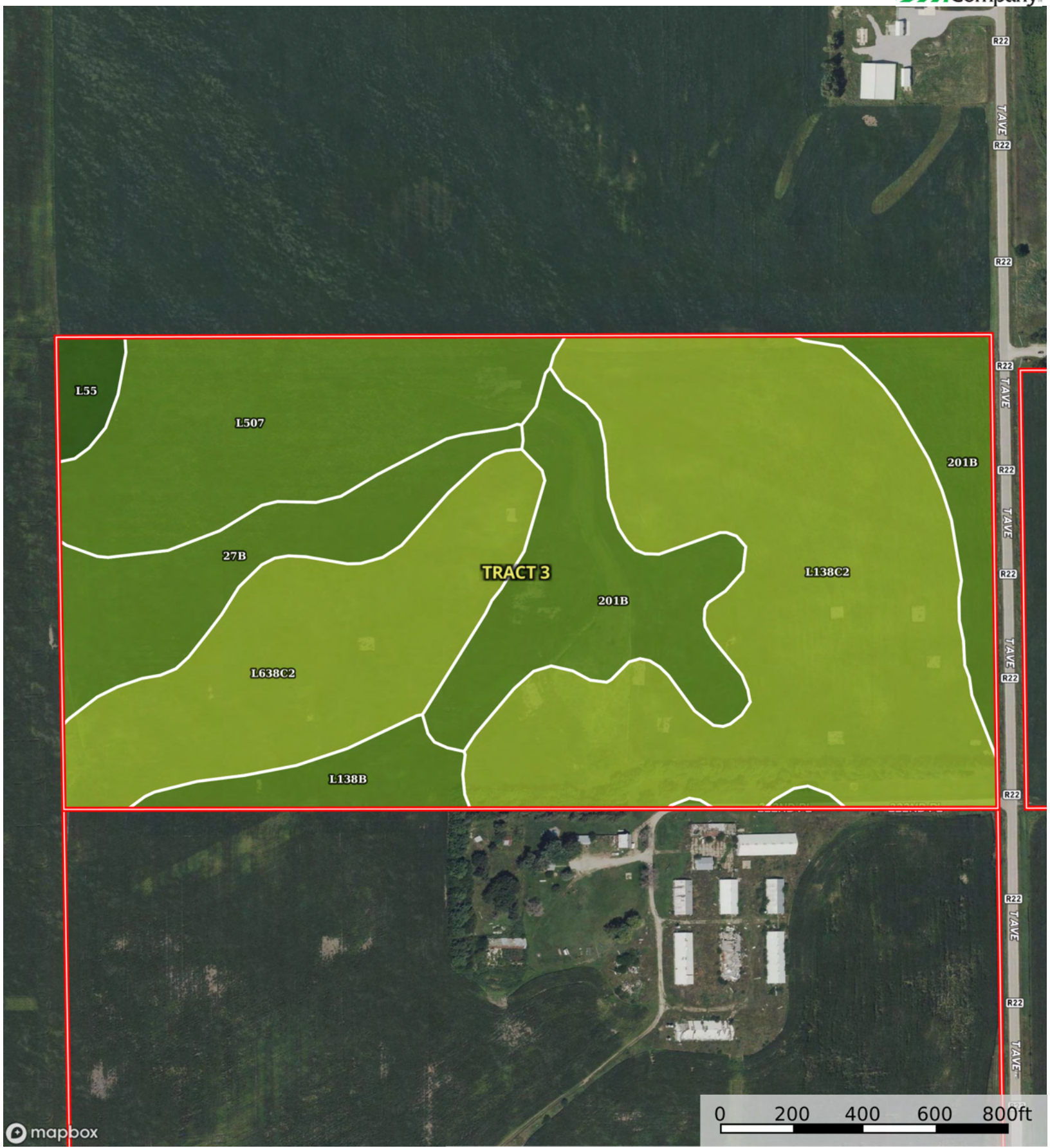
(c) climatic limitations (e) susceptibility to erosion

(s) soil limitations within the rooting zone (w) excess of water

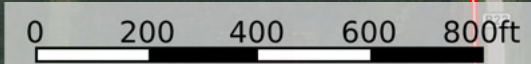


mapbox

Boundary



mapbox



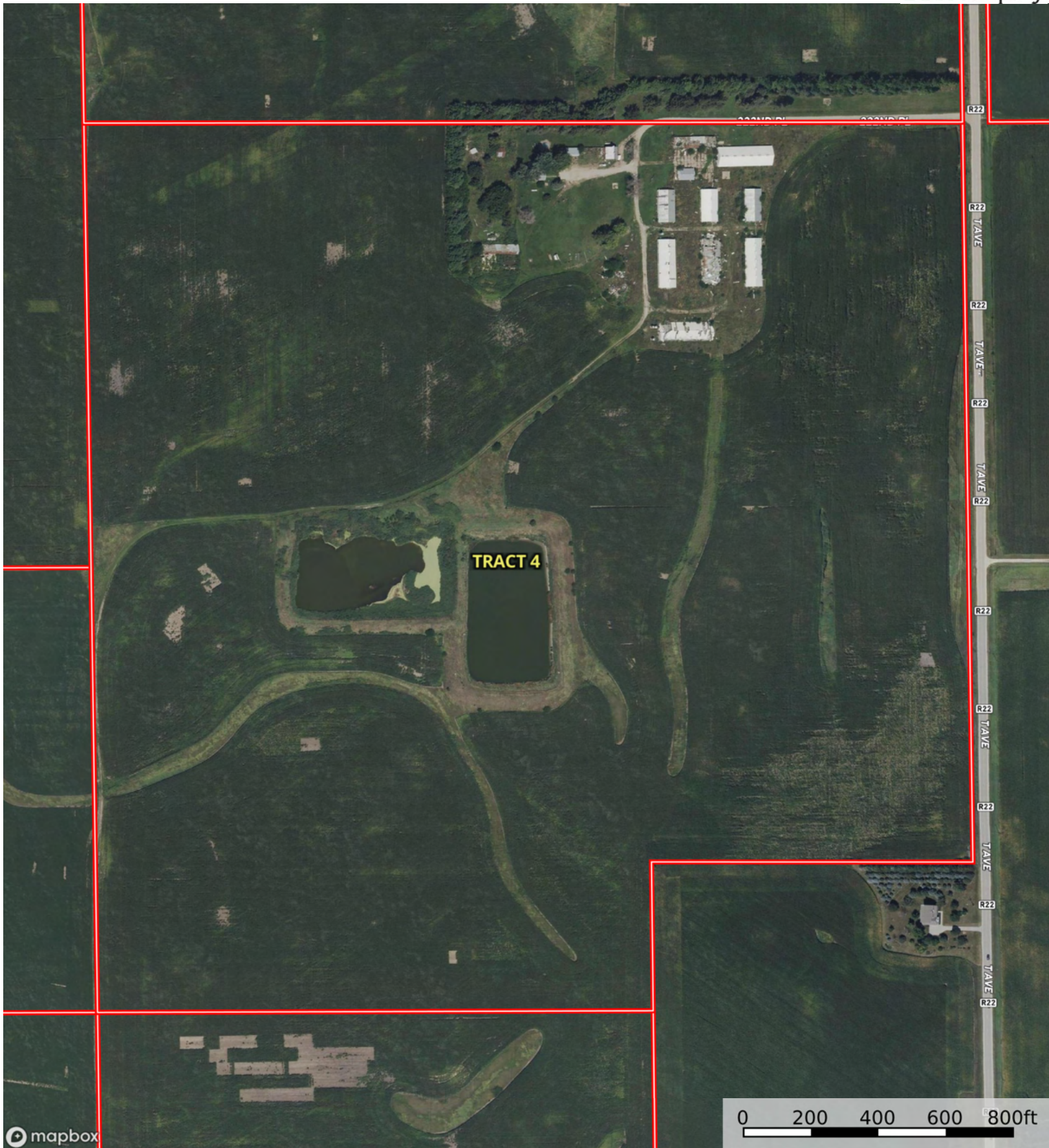
Boundary

Boundary 79.39 ac

SOIL CODE	SOIL DESCRIPTION	ACRES	%	CSR2	CPI	NCCPI	CAP
L138C2	Clarion loam, Bemis moraine, 6 to 10 percent slopes, moderately eroded	28.89	36.39	83.0	0	62	3e
L638C2	Clarion-Storden complex, Bemis moraine, 6 to 10 percent slopes, moderately eroded	13.41	16.89	75.0	0	64	3e
201B	Coland-Terril complex, 2 to 5 percent slopes	13.05	16.44	74.0	0	89	2w
L507	Canisteo clay loam, Bemis moraine, 0 to 2 percent slopes	12.79	16.11	87.0	0	81	2w
27B	Terril loam, 2 to 6 percent slopes	6.92	8.72	87.0	0	91	2e
L138B	Clarion loam, Bemis moraine, 2 to 6 percent slopes	3.13	3.94	88.0	0	80	2e
L55	Nicollet loam, 1 to 3 percent slopes	1.2	1.51	91.0	0	85	1
TOTALS		79.39(*)	100%	81.48	-	73.42	2.52

(\*) Total acres may differ in the second decimal compared to the sum of each acreage soil. This is due to a round error because we only show the acres of each soil with two decimal.





mapbox



 Boundary



Boundary 148.6 ac

SOIL CODE	SOIL DESCRIPTION	ACRES	%	CSR2	CPI	NCCPI	CAP
L138B	Clarion loam, Bemis moraine, 2 to 6 percent slopes	41.63	28.01	88.0	0	80	2e
L138C2	Clarion loam, Bemis moraine, 6 to 10 percent slopes, moderately eroded	39.12	26.33	83.0	0	62	3e
201B	Coland-Terril complex, 2 to 5 percent slopes	29.56	19.89	74.0	0	89	2w
L55	Nicollet loam, 1 to 3 percent slopes	27.85	18.74	91.0	0	85	1
AW	Animal waste	5.52	3.71	-	0	-	-
5040	Orthents, loamy	3.26	2.19	5.0	0	-	-
L62C2	Storden loam, Bemis moraine, 6 to 10 percent slopes, moderately eroded	1.28	0.86	64.0	0	67	3e
L638C2	Clarion-Storden complex, Bemis moraine, 6 to 10 percent slopes, moderately eroded	0.38	0.26	75.0	0	64	3e
TOTALS		148.6(*)	100%	79.13	-	73.11	2.09

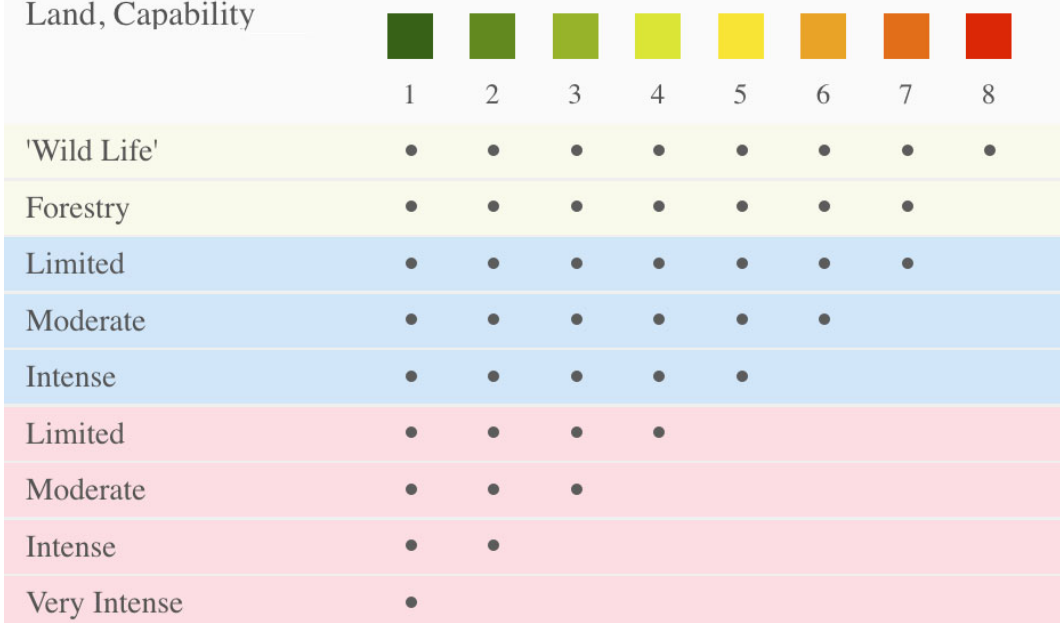
(\*) Total acres may differ in the second decimal compared to the sum of each acreage soil. This is due to a round error because we only show the acres of each soil with two decimal.

### Capability Legend

Increased Limitations and Hazards

Decreased Adaptability and Freedom of Choice Users

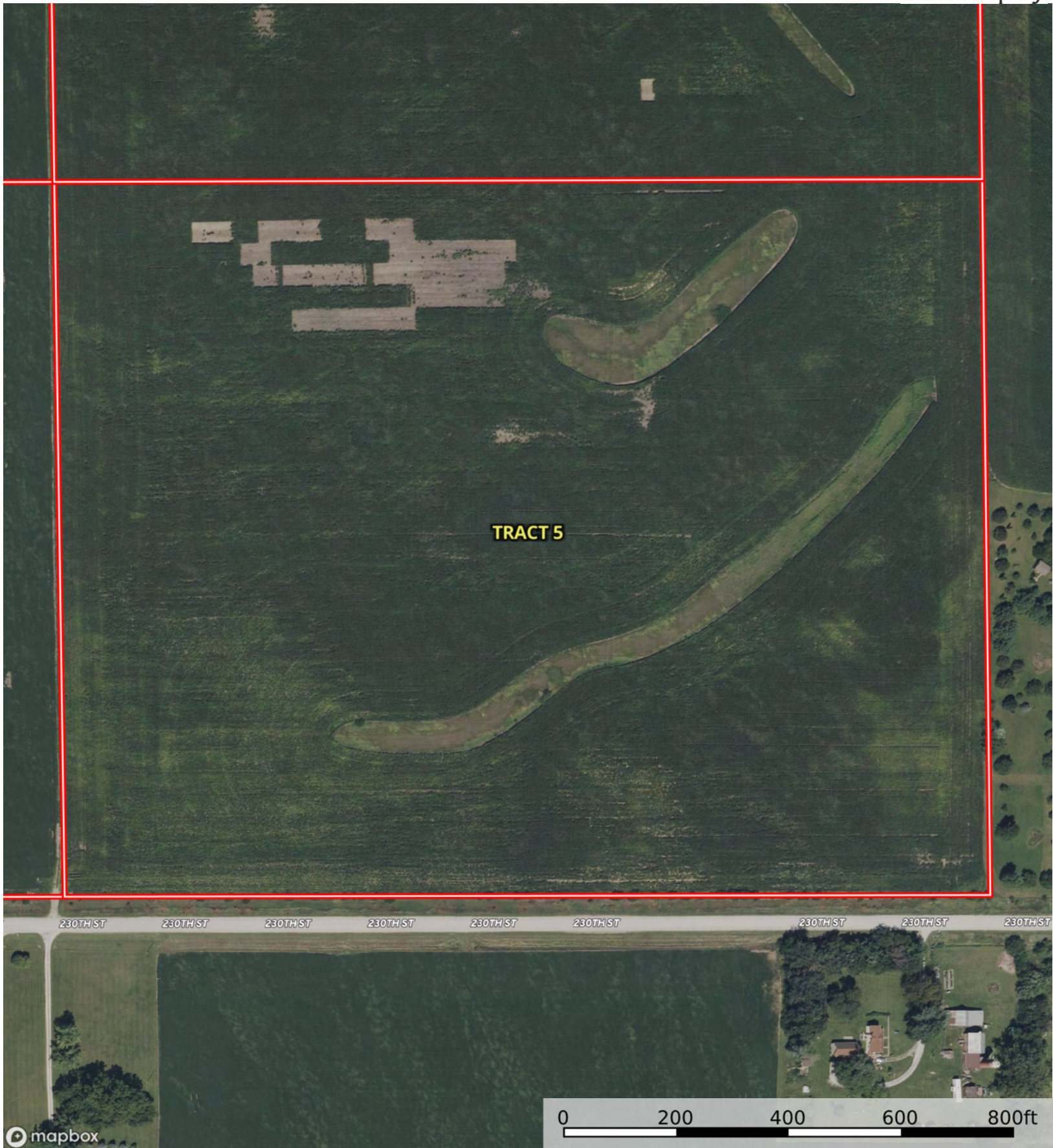
Land, Capability



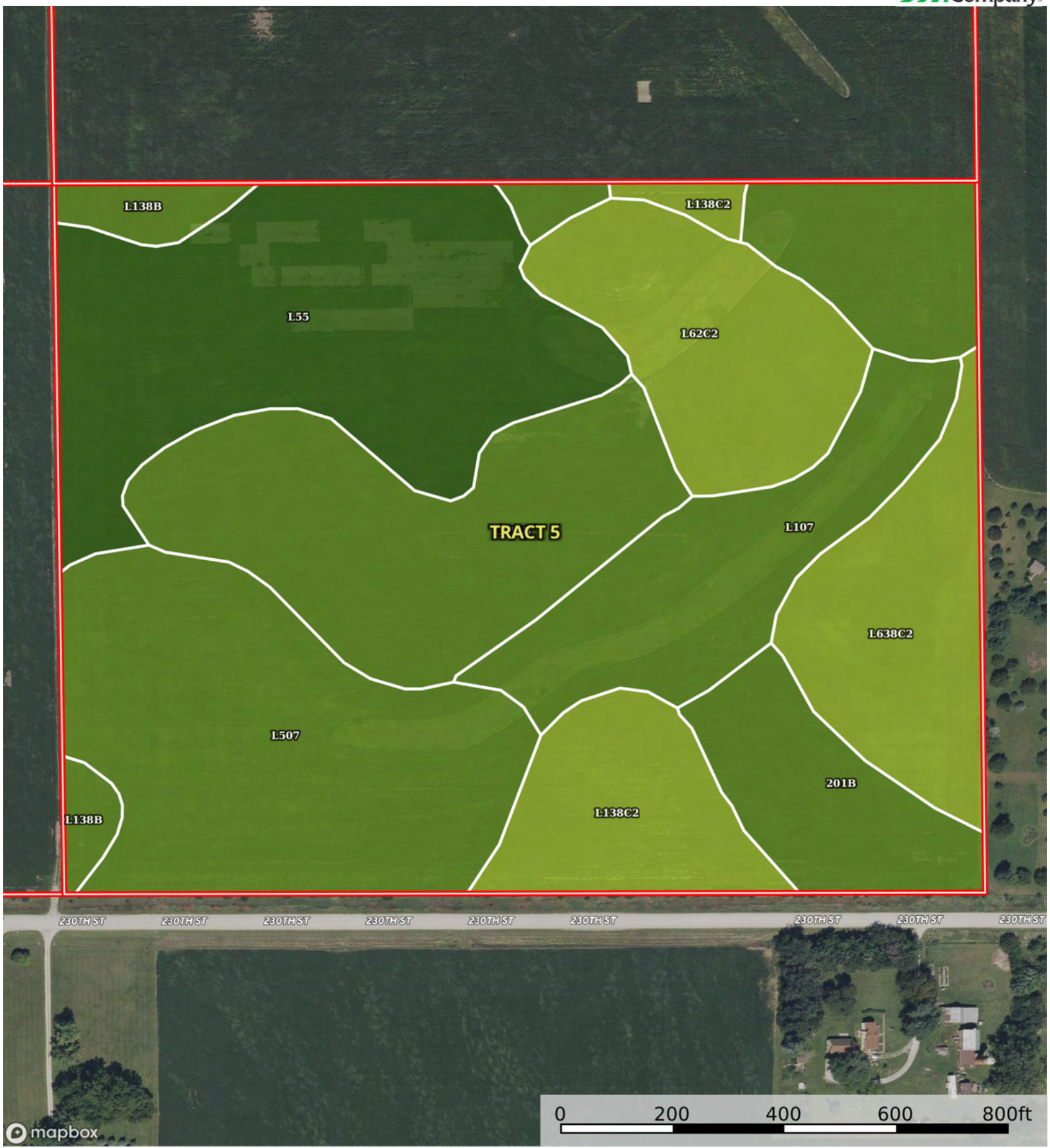
### Grazing Cultivation

(c) climatic limitations (e) susceptibility to erosion

(s) soil limitations within the rooting zone (w) excess of water



 Boundary



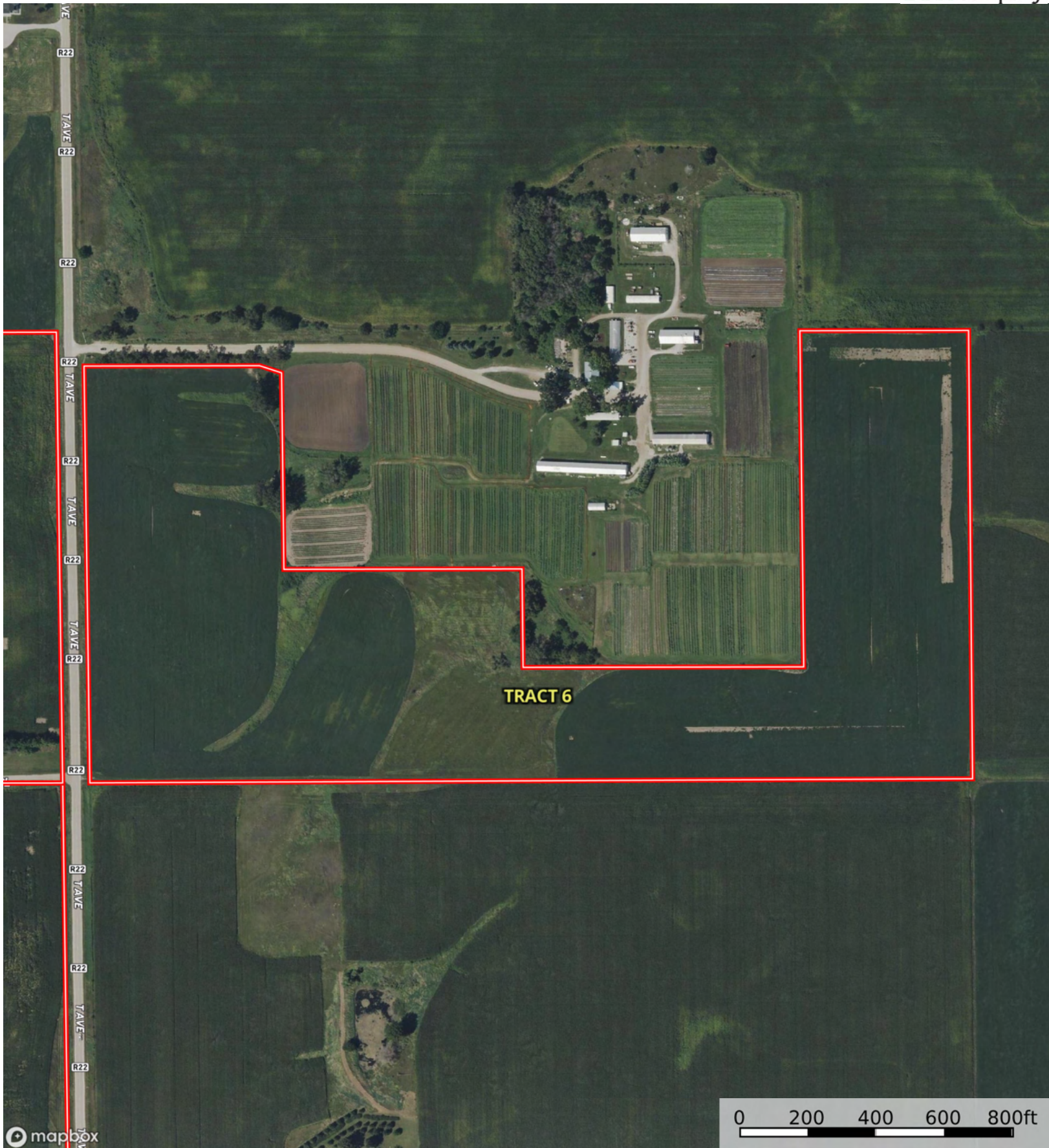
 Boundary

Boundary 48.26 ac

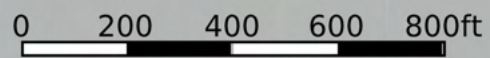
SOIL CODE	SOIL DESCRIPTION	ACRES	%	CSR2	CPI	NCCPI	CAP
L55	Nicollet loam, 1 to 3 percent slopes	9.56	19.81	91.0	0	85	1
L507	Canisteo clay loam, Bemis moraine, 0 to 2 percent slopes	8.79	18.21	87.0	0	81	2w
L138B	Clarion loam, Bemis moraine, 2 to 6 percent slopes	8.39	17.38	88.0	0	80	2e
201B	Coland-Terril complex, 2 to 5 percent slopes	5.23	10.83	74.0	0	89	2w
L107	Webster clay loam, Bemis moraine, 0 to 2 percent slopes	4.53	9.38	88.0	0	84	2w
L62C2	Storden loam, Bemis moraine, 6 to 10 percent slopes, moderately eroded	4.35	9.01	64.0	0	67	3e
L638C2	Clarion-Storden complex, Bemis moraine, 6 to 10 percent slopes, moderately eroded	4.03	8.35	75.0	0	64	3e
L138C2	Clarion loam, Bemis moraine, 6 to 10 percent slopes, moderately eroded	3.38	7.0	83.0	0	62	3e
TOTALS		48.26(*)	100%	83.28	-	78.74	2.05

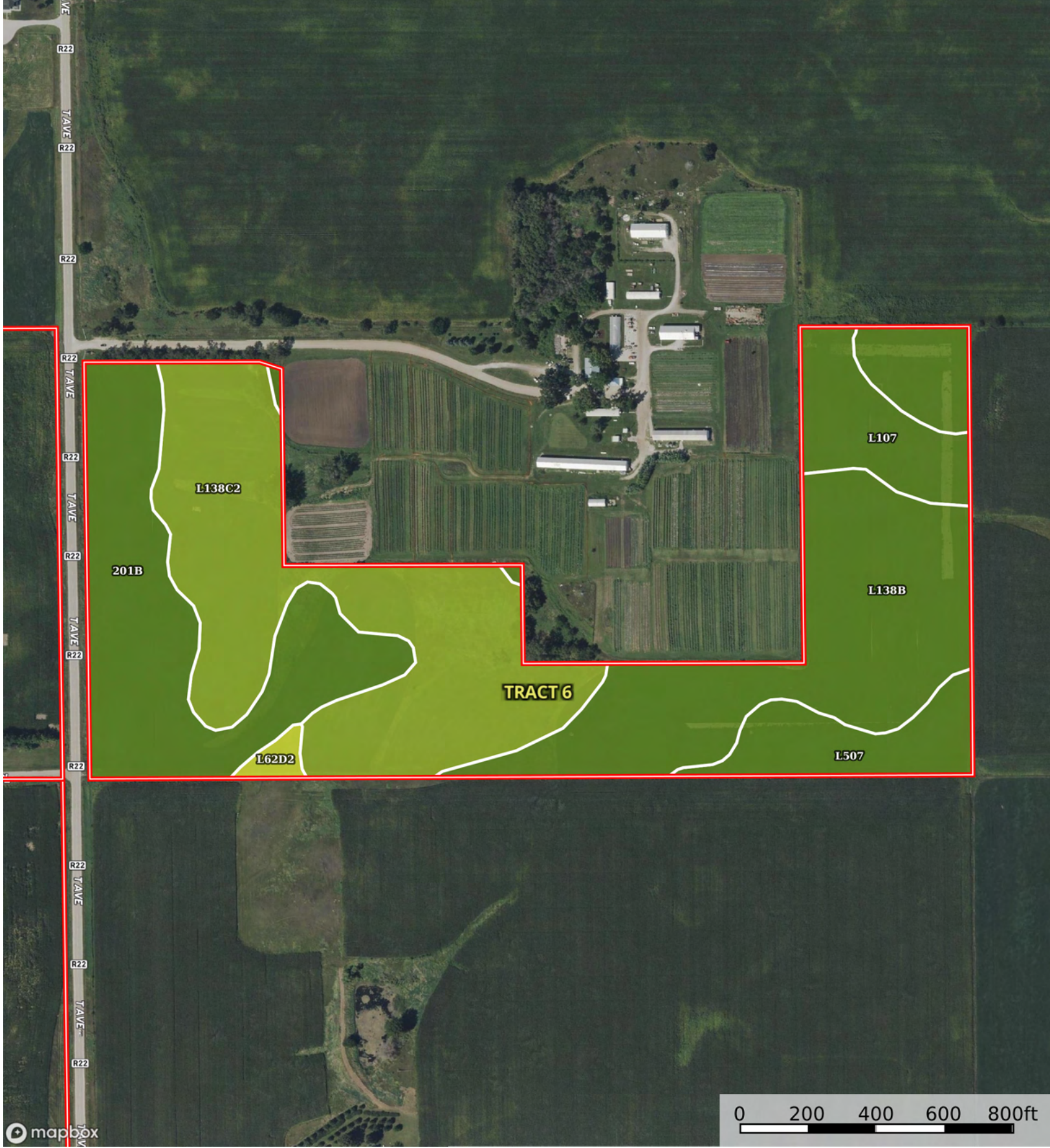
(\*) Total acres may differ in the second decimal compared to the sum of each acreage soil. This is due to a round error because we only show the acres of each soil with two decimal.





TRACT 6





 Boundary

|  Boundary 47.54 ac

SOIL CODE	SOIL DESCRIPTION	ACRES	%	CSR2	CPI	NCCPI	CAP
L138C2	Clarion loam, Bemis moraine, 6 to 10 percent slopes, moderately eroded	15.71	33.05	83.0	0	62	3e
L138B	Clarion loam, Bemis moraine, 2 to 6 percent slopes	14.12	29.7	88.0	0	80	2e
201B	Coland-Terril complex, 2 to 5 percent slopes	10.64	22.38	74.0	0	89	2w
L107	Webster clay loam, Bemis moraine, 0 to 2 percent slopes	3.4	7.15	88.0	0	84	2w
L507	Canisteo clay loam, Bemis moraine, 0 to 2 percent slopes	3.23	6.79	87.0	0	81	2w
L62D2	Storden loam, Bemis moraine, 10 to 16 percent slopes, moderately eroded	0.44	0.93	41.0	0	63	4e
TOTALS		47.54(*)	100%	82.71	-	76.26	2.35

(\*) Total acres may differ in the second decimal compared to the sum of each acreage soil. This is due to a round error because we only show the acres of each soil with two decimal.

