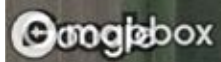


 Tract 1  Tract 2



-  Tract 1
-  Tract 2



Imagery ©2024 Airbus, CNES / Airbus, Maxar Technologies, USDA, NOAA, Geo

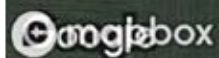
-  Tract 1
-  Tract 2

| 73.08 ac

SOIL CODE	SOIL DESCRIPTION	ACRES	%	CPI	NCCPI	CAP
229	Waldorf silty clay loam, 0 to 2 percent slopes	35.75	48.93	85	69	2w
96	Collinwood silty clay loam, 1 to 3 percent slopes	30.28	41.44	86	70	2w
211	Lura silty clay, 0 to 1 percent slopes	3.85	5.27	81	57	3w
230	Guckeen silty clay loam, 1 to 3 percent slopes	3.15	4.31	95	81	2w
110	Marna silty clay loam, 0 to 2 percent slopes	0.05	0.07	87	77	2w
TOTALS		73.08(*)	100%	85.65	69.31	2.05

(*) Total acres may differ in the second decimal compared to the sum of each acreage soil. This is due to a round error because we only show the acres of each soil with two decimal.

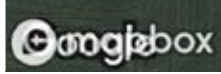




Imagery ©2024

0 200 400 600 800ft

Tract 1



Imagery ©2024 Airbus, CNES, Airbus, Maxar Technologies, USDA/FRC, Geo

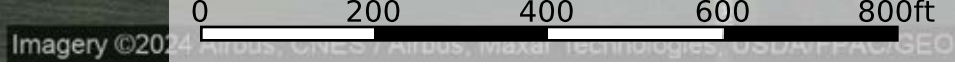
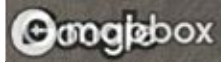
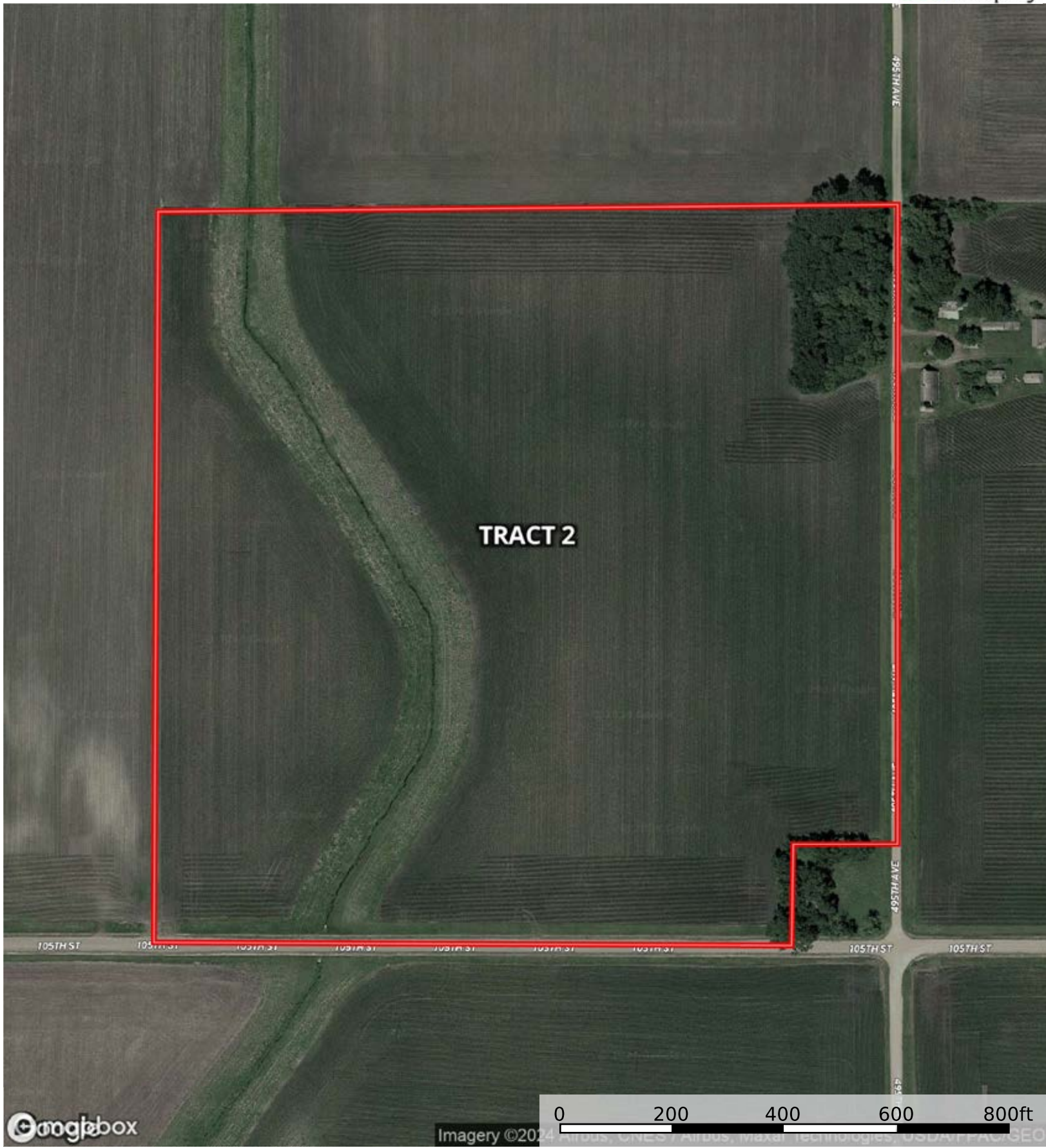
Tract 1

|  Boundary 37.33 ac

SOIL CODE	SOIL DESCRIPTION	ACRES	%	CPI	NCCPI	CAP
229	Waldorf silty clay loam, 0 to 2 percent slopes	22.82	61.15	85	69	2w
96	Collinwood silty clay loam, 1 to 3 percent slopes	11.31	30.31	86	70	2w
230	Guckeen silty clay loam, 1 to 3 percent slopes	3.15	8.44	95	81	2w
110	Marna silty clay loam, 0 to 2 percent slopes	0.05	0.13	87	77	2w
TOTALS		37.33(*)	100%	86.17	70.35	2.0


(*) Total acres may differ in the second decimal compared to the sum of each acreage soil. This is due to a round error because we only show the acres of each soil with two decimal.





 Tract 2



|  35.75 ac

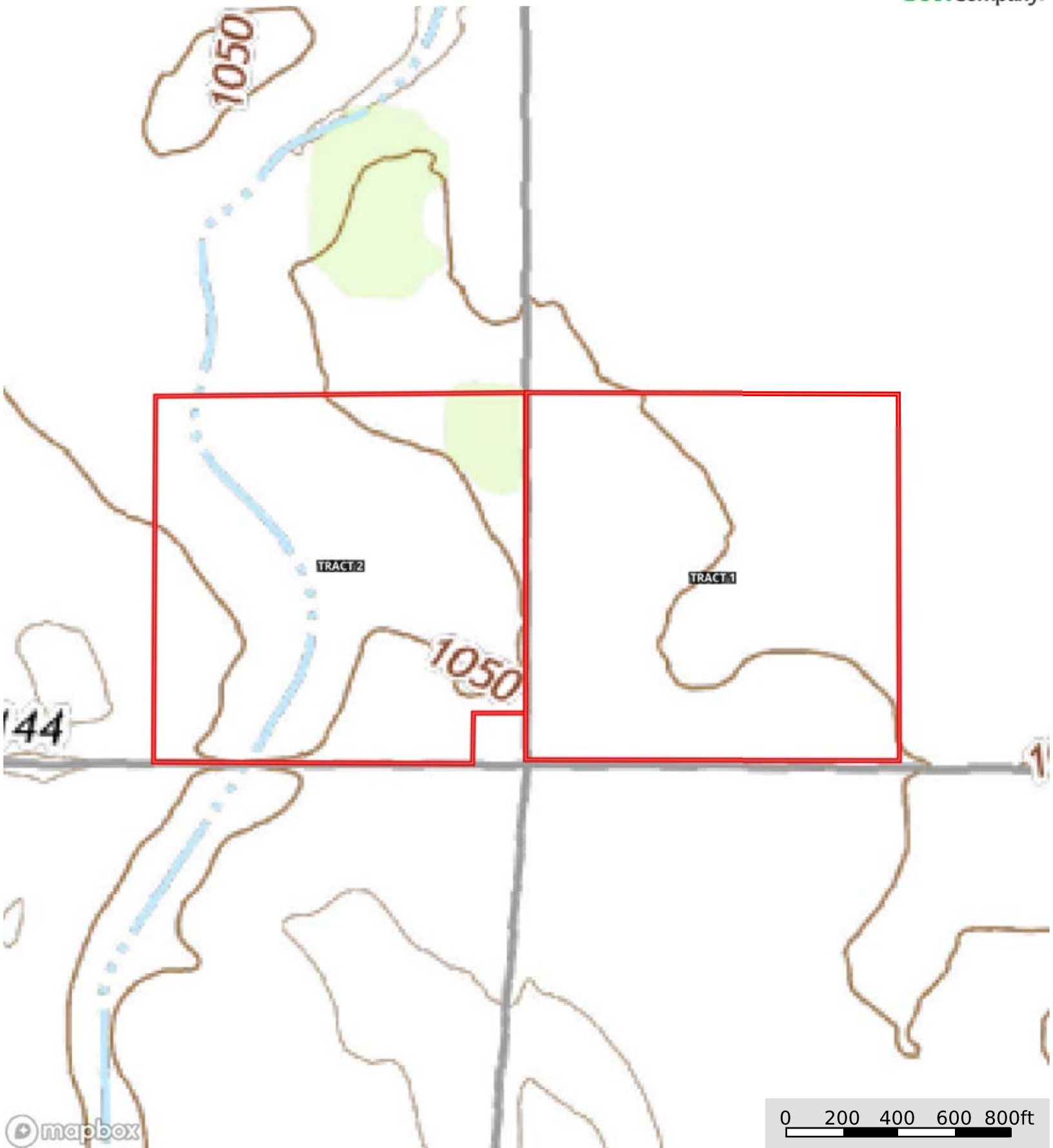
SOIL CODE	SOIL DESCRIPTION	ACRES	%	CPI	NCCPI	CAP
96	Collinwood silty clay loam, 1 to 3 percent slopes	18.97	53.06	86	70	2w
229	Waldorf silty clay loam, 0 to 2 percent slopes	12.93	36.17	85	69	2w
211	Lura silty clay, 0 to 1 percent slopes	3.85	10.77	81	57	3w
TOTALS		35.75(*)	100%	85.1	68.24	2.11

(*) Total acres may differ in the second decimal compared to the sum of each acreage soil. This is due to a round error because we only show the acres of each soil with two decimal.



L-2400154 Richter

Blue Earth County, Minnesota, 79.23 AC +/-



Tract 1 Tract 2