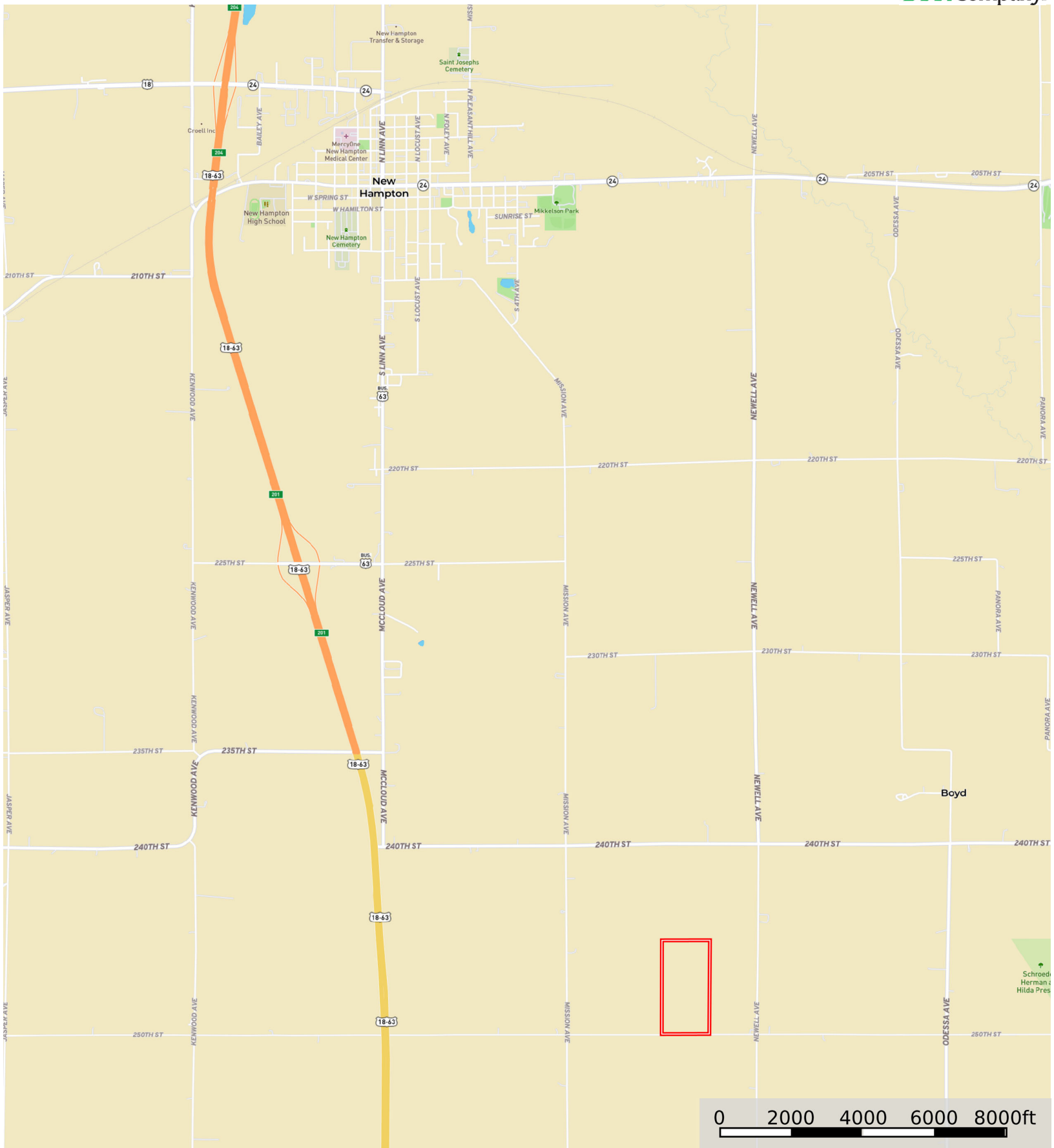



Allen, Thelma

Chickasaw County, Iowa, 79 AC +/-




Boundary



 Boundary



 Boundary

|  Boundary 80.81 ac

SOIL CODE	SOIL DESCRIPTION	ACRES	%	CSR2	CPI	NCCPI	CAP
391B	Clyde-Floyd complex, 1 to 4 percent slopes	30.88	38.21	87.0	0	89	2w
83B	Kenyon loam, 2 to 5 percent slopes	25.45	31.49	90.0	0	89	2e
399	Readlyn silt loam, 1 to 3 percent slopes	13.24	16.38	91.0	0	80	1
83C2	Kenyon loam, 5 to 9 percent slopes, eroded	7.93	9.81	84.0	0	83	3e
83C	Kenyon loam, 5 to 9 percent slopes	3.31	4.1	85.0	0	88	3e
TOTALS		80.81(*)	100%	88.22	-	86.9	1.98

(*) Total acres may differ in the second decimal compared to the sum of each acreage soil. This is due to a round error because we only show the acres of each soil with two decimal.

Capability Legend

Increased Limitations and Hazards

Decreased Adaptability and Freedom of Choice Users

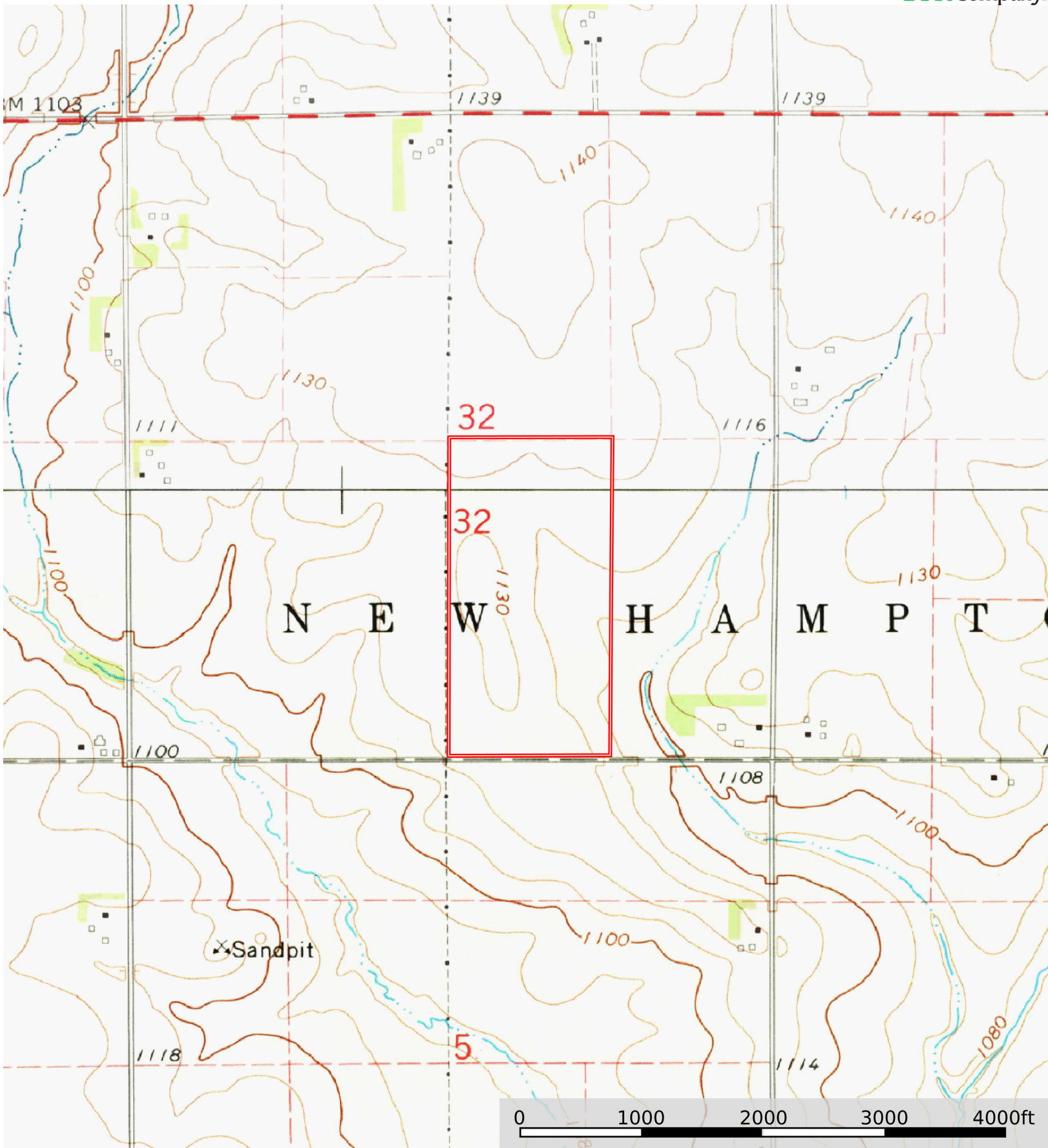
Land, Capability


	1	2	3	4	5	6	7	8
'Wild Life'	•	•	•	•	•	•	•	•
Forestry	•	•	•	•	•	•	•	
Limited	•	•	•	•	•	•	•	
Moderate	•	•	•	•	•	•		
Intense	•	•	•	•	•			
Limited	•	•	•	•				
Moderate	•	•	•					
Intense	•	•						
Very Intense	•							

Grazing Cultivation

(c) climatic limitations (e) susceptibility to erosion

(s) soil limitations within the rooting zone (w) excess of water



 Boundary