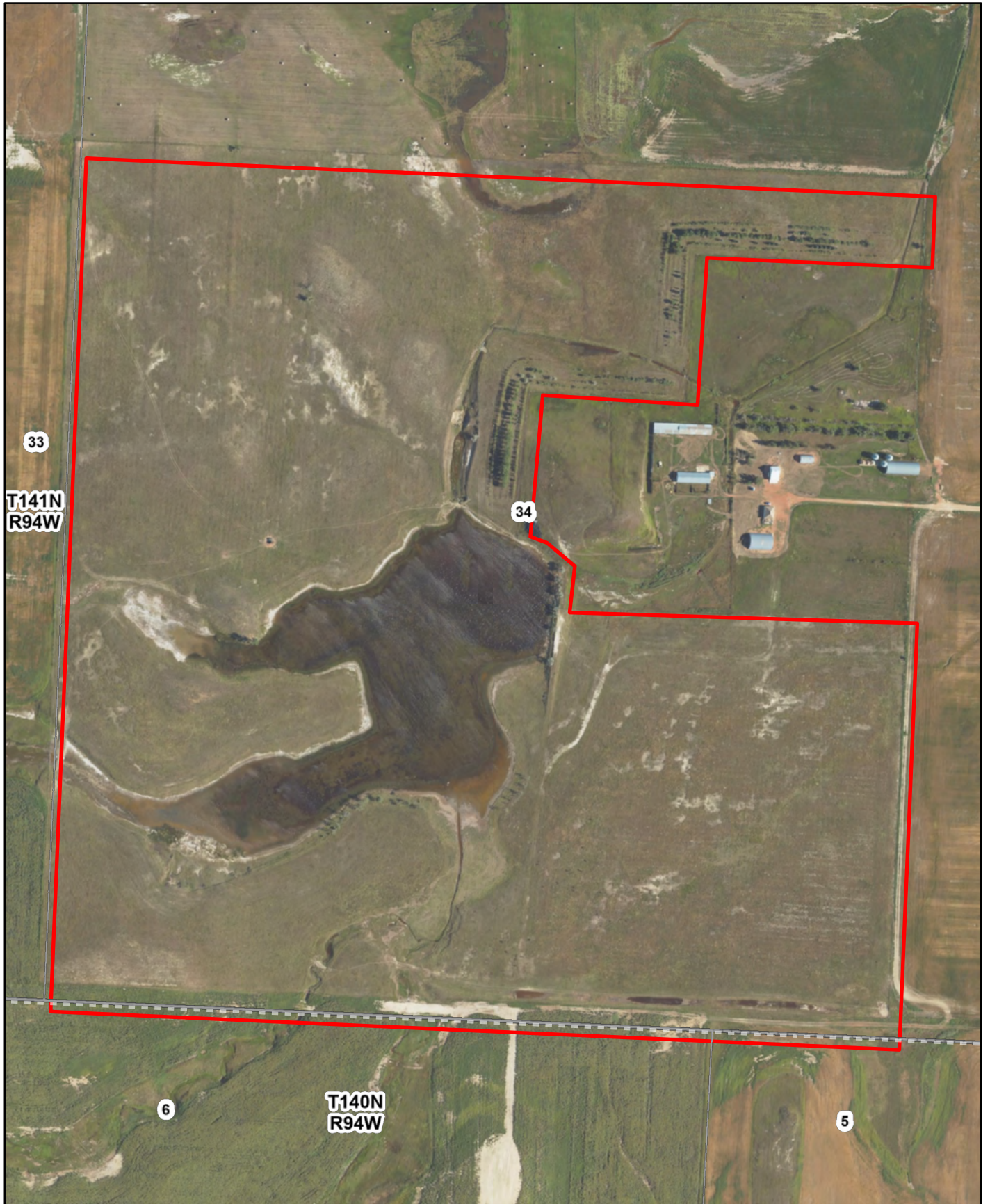


**Anton & Ashlynn Helfrich**  
**135.14 Ac**  
**Dunn County, North Dakota**

Latitude: 46.939°N  
Longitude: 102.6936°W  
Imagery Source: USDA NAIP  
Soil Data Source: USDA NRCS  
Boundaries are Approximate



33

T141N  
R94W

34

6

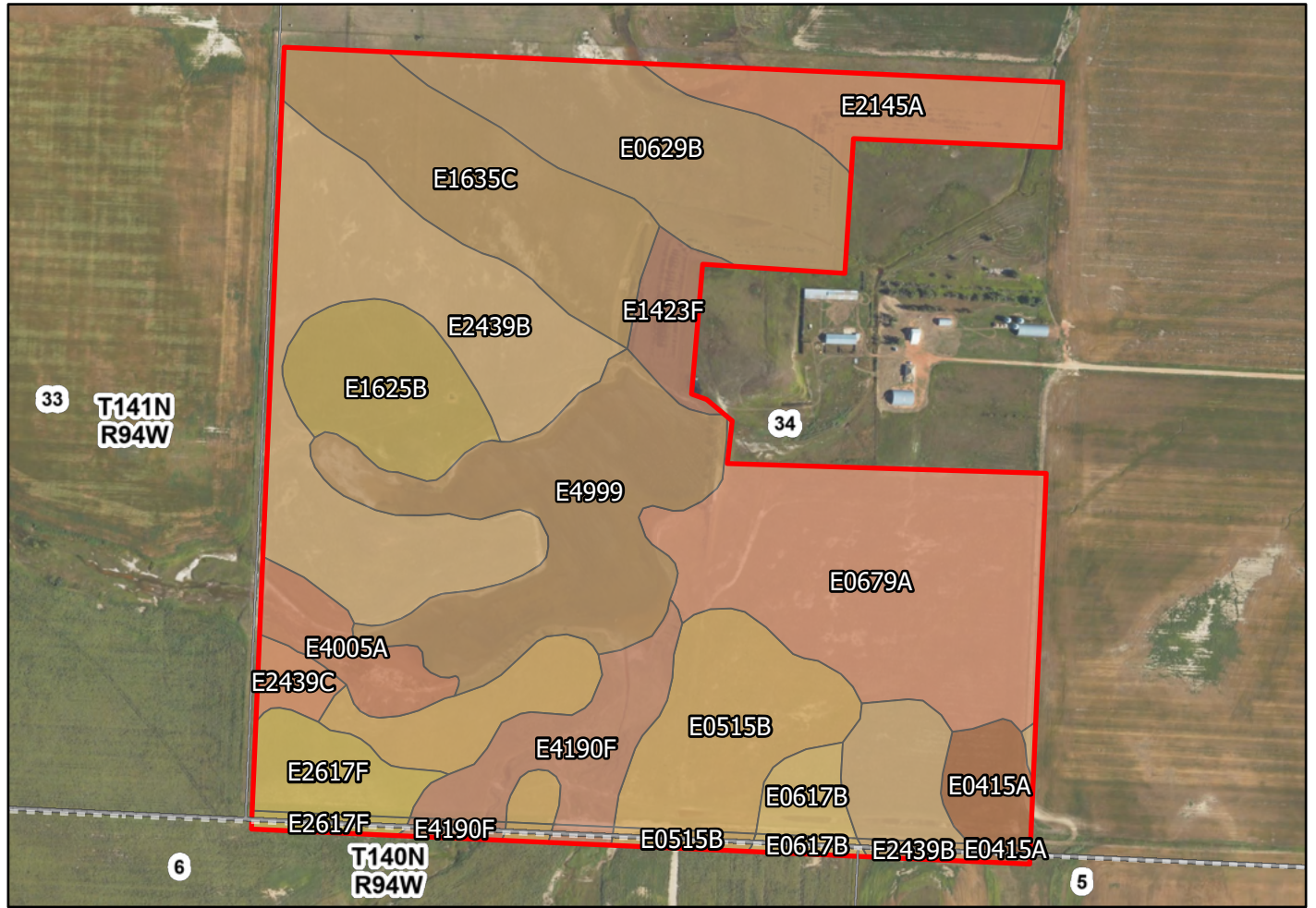
T140N  
R94W

5



**Anton & Ashlynn Helfrich**  
**135.14 Ac**  
**Dunn County, North Dakota**

Latitude: 46.9848°N  
Longitude: 102.5833°W  
Imagery Source: USDA NAIP  
Soil Data Source: USDA NRCS  
Boundaries are Approximate

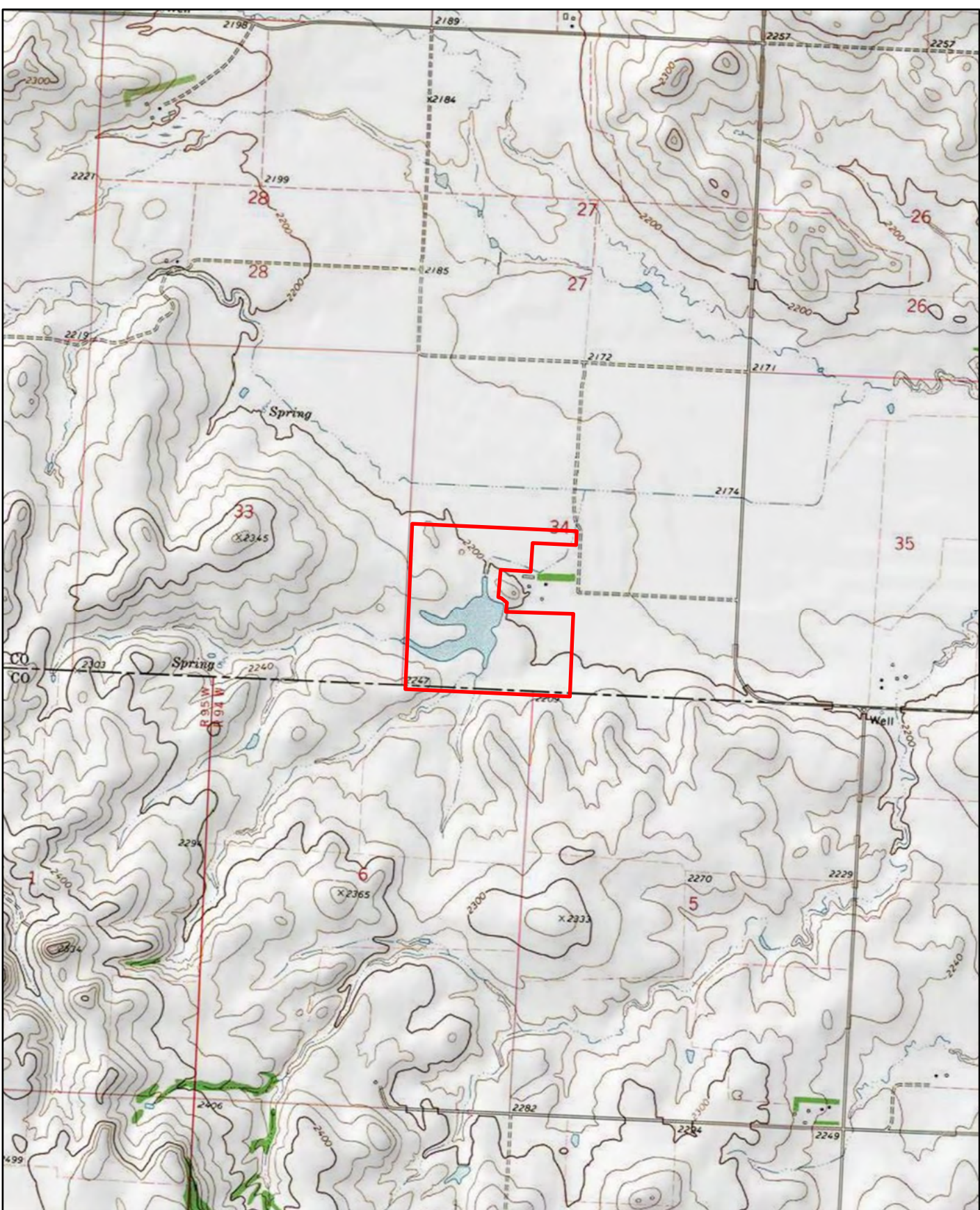


Map Symbol	Name	Non-IRR LCC	PRODUCTIVITY INDEX	ACRES
E2439B	Sen-Janesburg silt loams, 3 to 6 percent slopes	2e	48	23.3
E0679A	Wyola-Daglum complex, 0 to 2 percent slopes	2s	64	20
E4999	Water	8w	0	16.1
E0515B	Rhoades-Daglum complex, 0 to 6 percent slopes	6s	28	13.6
E0629B	Farnuf-Belfield-Rhoades complex, 2 to 6 percent slopes	2e	69	13
E1635C	Vebar-Tally fine sandy loams, 6 to 9 percent slopes	4e	51	11.8
E1625B	Vebar-Parshall fine sandy loams, 3 to 6 percent slopes	3e	62	6.8
E2145A	Shambo loam, 0 to 2 percent slopes	2c	87	6.2
E4190F	Cabba-Chama-Havrelon, occasionally flooded complex, 2 to 70 percent slopes	7e	40	5.8
E2617F	Cabba-Chama-Shambo loams, 9 to 50 percent slopes	7e	27	3.5
E4005A	Harriet loam, 0 to 2 percent slopes, occasionally flooded	6s	27	3.3
E0415A	Belfield-Daglum complex, 0 to 2 percent slopes	2s	59	2.5
E1423F	Flasher-Vebar-Parshall complex, 9 to 35 percent slopes	7e	20	2.5
E0617B	Belfield-Wyola-Daglum complex, 2 to 6 percent slopes	2e	65	1.8
E2439C	Sen-Janesburg silt loams, 6 to 9 percent slopes	3e	37	1.3
E0515B	Rhoades-Daglum complex, 0 to 6 percent slopes	6s	28	0.9
E4190F	Cabba-Chama-Havrelon, occasionally flooded complex, 2 to 70 percent slopes	7e	40	0.8
E2617F	Cabba-Chama-Shambo loams, 9 to 50 percent slopes	7e	27	0.7
E2439B	Sen-Janesburg silt loams, 3 to 6 percent slopes	2e	48	0.5
E0617B	Belfield-Wyola-Daglum complex, 2 to 6 percent slopes	2e	65	0.5
E0415A	Belfield-Daglum complex, 0 to 2 percent slopes	2s	59	0.2
TOTAL			45.6	135.1



**Anton & Ashlynn Helfrich**  
**135.14 Ac**  
**Dunn County, North Dakota**

Latitude: 46.9848°N  
Longitude: 102.5833°W  
Imagery Source: USDA NAIP  
Soil Data Source: USDA NRCS  
Boundaries are Approximate



**Anton & Ashlynn Helfrich**  
**135.14 Ac**  
**Dunn County, North Dakota**

Latitude: 46.9848°N  
Longitude: 102.5833°W  
Imagery Source: USDA NAIP  
Soil Data Source: USDA NRCS  
Boundaries are Approximate