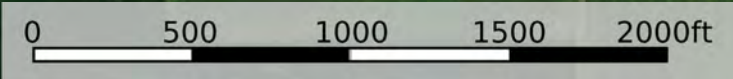
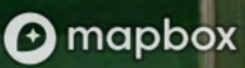



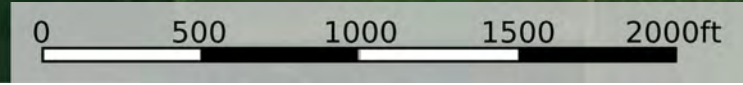
 Boundary



 Boundary



mapbox



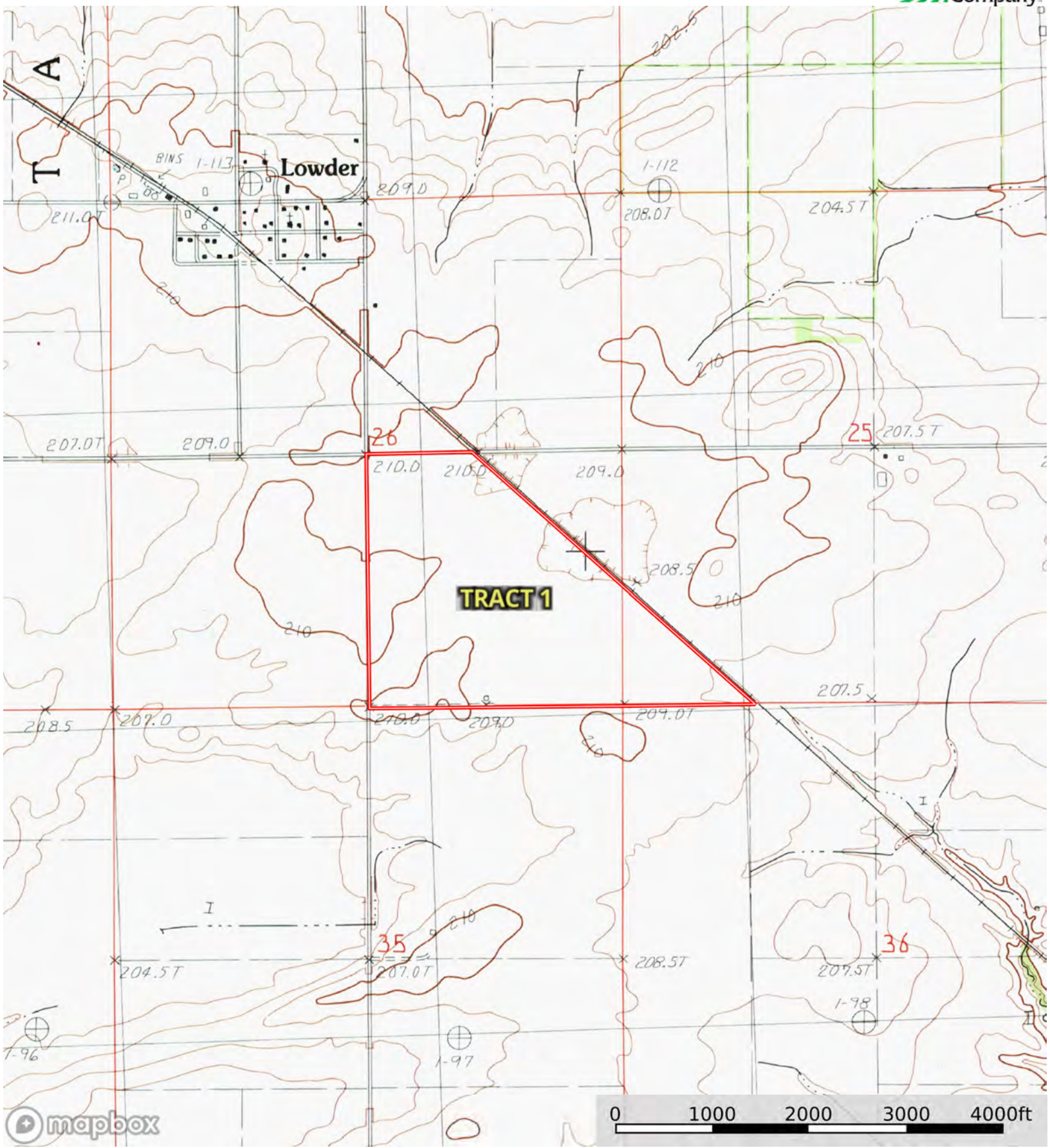
 Boundary


|  Boundary 154.8 ac

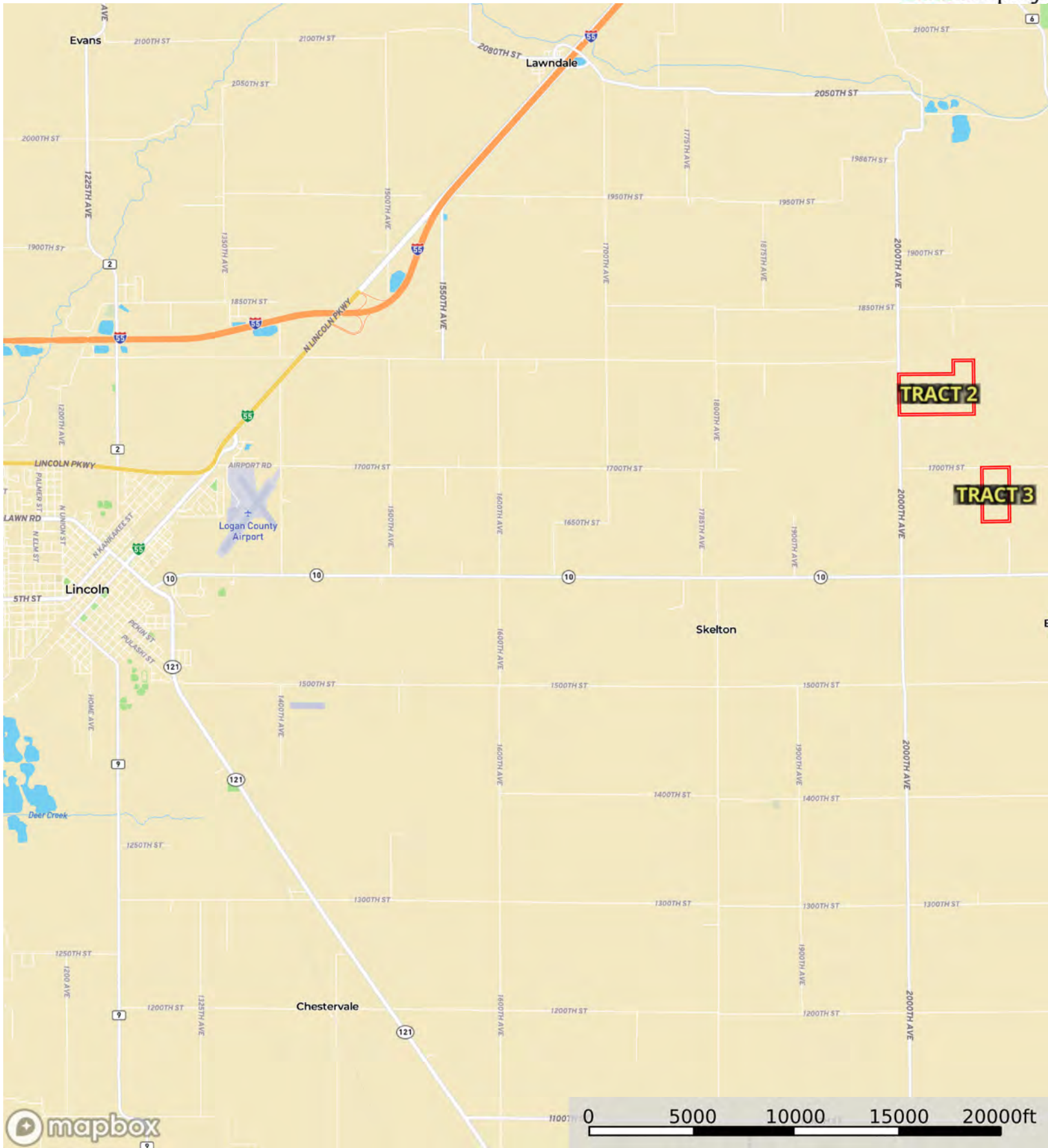
SOIL CODE	SOIL DESCRIPTION	ACRES	%	PI	NCCPI	CAP
50A	Viriden silty clay loam, 0 to 2 percent slopes	72.3	46.71	138	81	2w
43A	Ipava silt loam, 0 to 2 percent slopes	67.84	43.82	142	91	1
112A	Cowden silt loam, 0 to 2 percent slopes	14.66	9.47	117	90	2w
TOTALS		154.8(*)	100%	137.76	86.23	1.56

(*) Total acres may differ in the second decimal compared to the sum of each acreage soil. This is due to a round error because we only show the acres of each soil with two decimal.

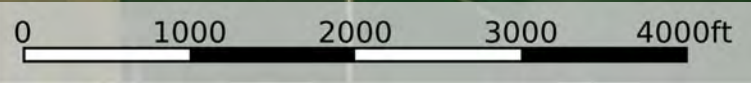
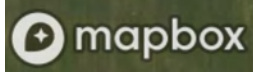
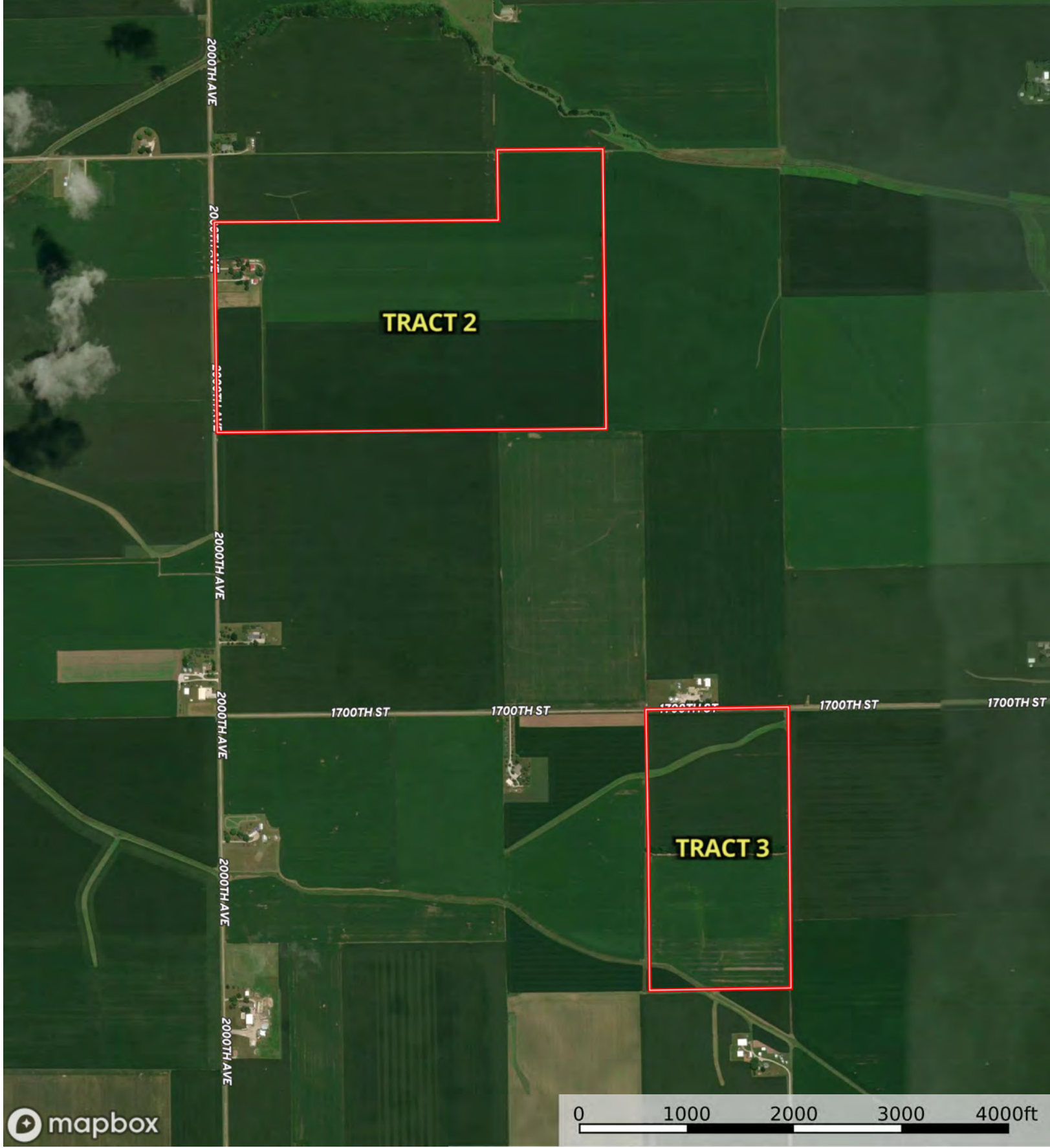




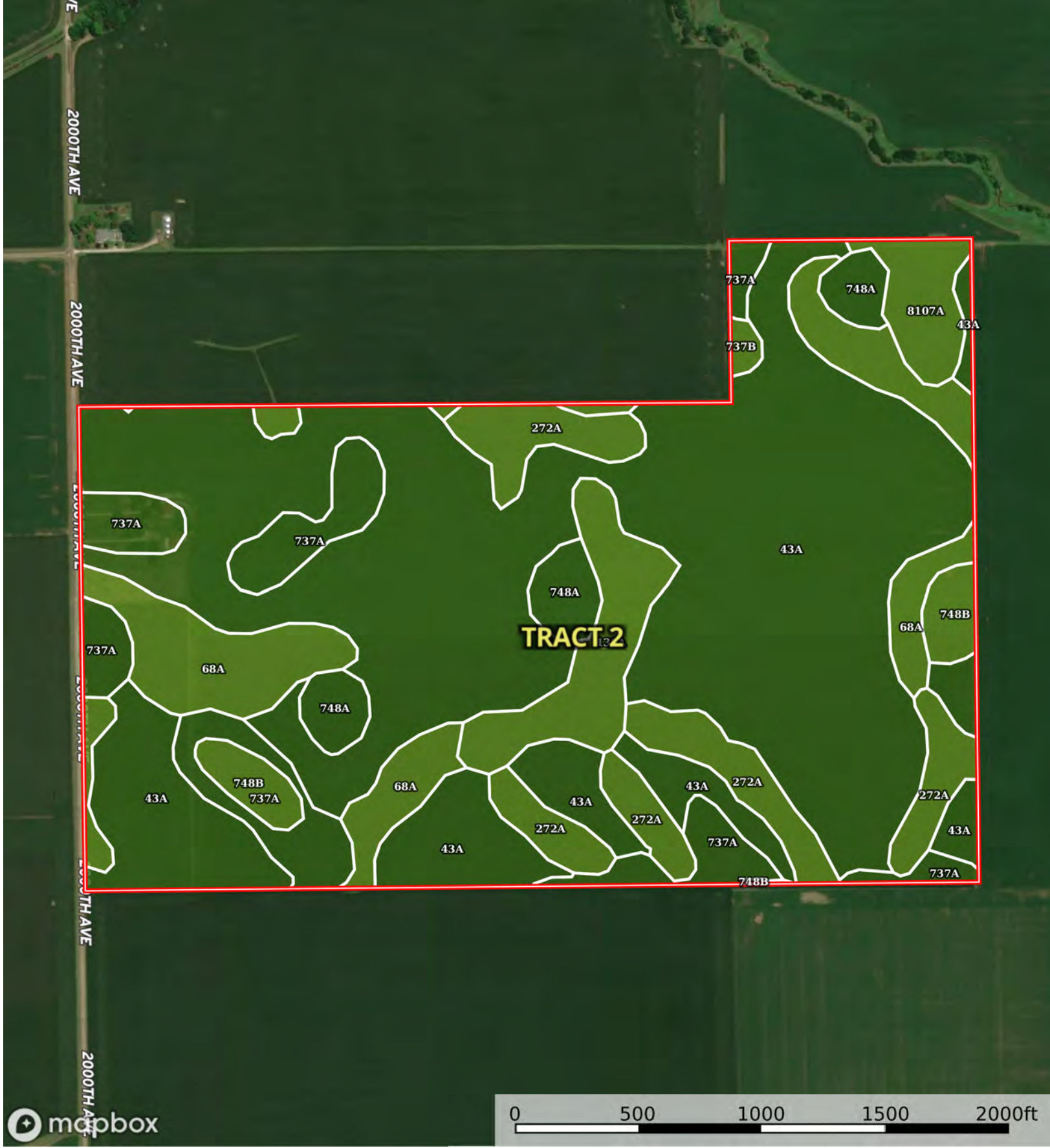
 Boundary



 Boundary



 Boundary



 Boundary


|  Boundary 178.86 ac

SOIL CODE	SOIL DESCRIPTION	ACRES	%	PI	NCCPI	CAP
43A	Ipava silt loam, 0 to 2 percent slopes	108.44	60.62	142	91	1
68A	Sable silty clay loam, 0 to 2 percent slopes	18.33	10.25	143	83	2w
737A	Tama silt loam, very deep to sand, 0 to 2 percent slopes	15.8	8.83	139	88	1
272A	Edgington silt loam, 0 to 2 percent slopes	14.57	8.14	124	86	2w
138A	Shiloh silty clay loam, 0 to 2 percent slopes	7.77	4.34	130	70	2w
748A	Plano silt loam, sandy substratum, 0 to 2 percent slopes	5.34	2.99	142	86	1
8107A	Sawmill silty clay loam, 0 to 2 percent slopes, occasionally flooded	3.95	2.21	139	85	2w
748B	Plano silt loam, sandy substratum, 2 to 5 percent slopes	3.82	2.14	141	85	2e
737B	Tama silt loam, very deep to sand, 2 to 5 percent slopes	0.84	0.47	138	88	2e
TOTALS		178.86(*)	100%	139.72	88.16	1.28

(*) Total acres may differ in the second decimal compared to the sum of each acreage soil. This is due to a round error because we only show the acres of each soil with two decimal.





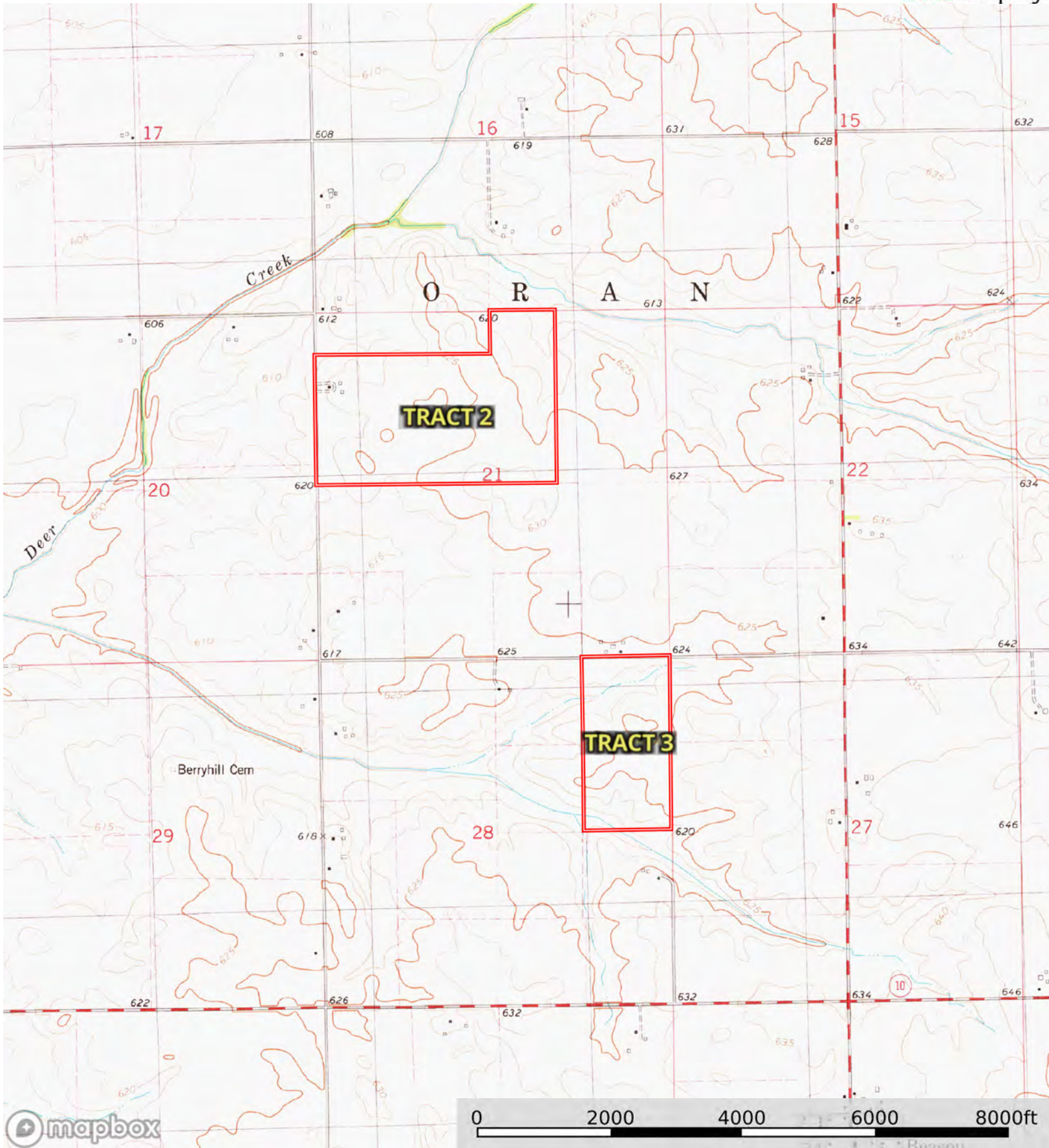
 Boundary


|  Boundary 79.92 ac

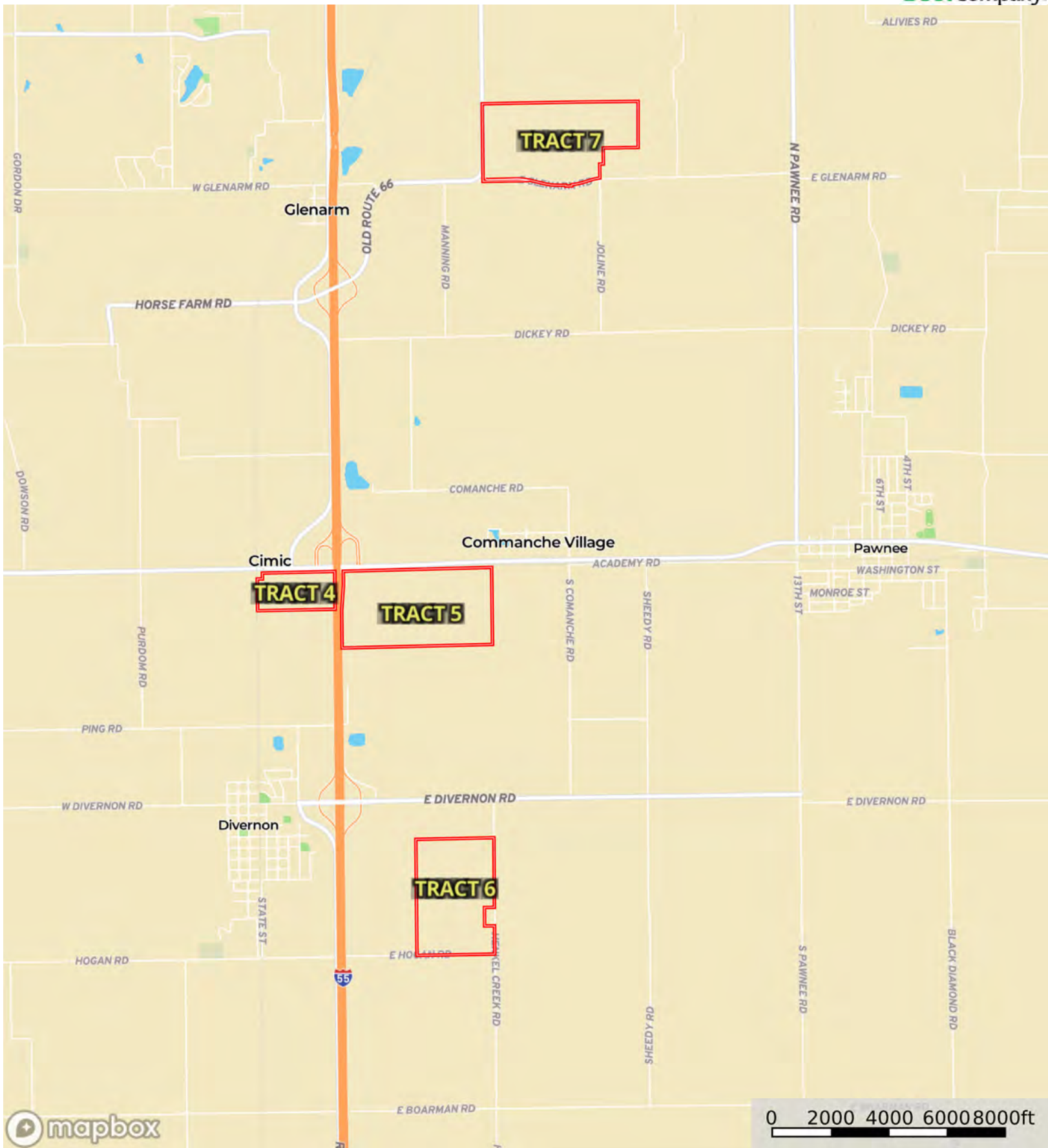
SOIL CODE	SOIL DESCRIPTION	ACRES	%	PI	NCCPI	CAP
43A	Ipava silt loam, 0 to 2 percent slopes	34.2	42.79	142	91	1
748B	Plano silt loam, sandy substratum, 2 to 5 percent slopes	18.53	23.19	141	85	2e
68A	Sable silty clay loam, 0 to 2 percent slopes	8.7	10.89	143	83	2w
748A	Plano silt loam, sandy substratum, 0 to 2 percent slopes	7.88	9.86	142	86	1
737A	Tama silt loam, very deep to sand, 0 to 2 percent slopes	5.1	6.38	139	88	1
272A	Edgington silt loam, 0 to 2 percent slopes	2.77	3.47	124	86	2w
8107A	Sawmill silty clay loam, 0 to 2 percent slopes, occasionally flooded	2.74	3.43	139	85	2w
TOTALS		79.92(*)	100%	140.96	87.67	1.41

(*) Total acres may differ in the second decimal compared to the sum of each acreage soil. This is due to a round error because we only show the acres of each soil with two decimal.





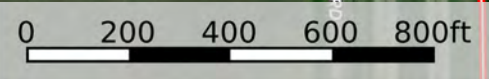
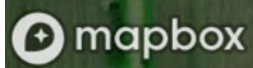
 Boundary




 Boundary



 Boundary



 Boundary


|  Boundary 77.39 ac

SOIL CODE	SOIL DESCRIPTION	ACRES	%	PI	NCCPI	CAP
50A	Viriden silty clay loam, 0 to 2 percent slopes	37.14	48.0	138	81	2w
43A	Ipava silt loam, 0 to 2 percent slopes	32.59	42.12	142	91	1
45A	Denny silt loam, 0 to 2 percent slopes	4.98	6.44	118	71	3w
249A	Edinburg silty clay loam, 0 to 2 percent slopes	2.68	3.46	127	62	3w
TOTALS		77.39(*)	100%	138.03	83.92	1.68

(*) Total acres may differ in the second decimal compared to the sum of each acreage soil. This is due to a round error because we only show the acres of each soil with two decimal.





 Boundary

|  Boundary 309.74 ac

SOIL CODE	SOIL DESCRIPTION	ACRES	%	PI	NCCPI	CAP
127B	Harrison silt loam, 2 to 5 percent slopes	79.2	25.57	129	83	2e
3074A	Radford silt loam, 0 to 2 percent slopes, frequently flooded	68.99	22.27	136	72	3w
259C2	Assumption silt loam, 5 to 10 percent slopes, eroded	52.21	16.85	111	88	3e
43A	Ipava silt loam, 0 to 2 percent slopes	50.21	16.21	142	91	1
119D3	Elco silty clay loam, 10 to 18 percent slopes, severely eroded	39.89	12.88	88	45	4e
119D2	Elco silt loam, 10 to 18 percent slopes, eroded	9.99	3.23	97	52	3e
705B	Buckhart silt loam, 2 to 5 percent slopes	3.51	1.13	141	93	2e
127C2	Harrison silt loam, 5 to 10 percent slopes, eroded	2.11	0.68	121	78	3e
50A	Virden silty clay loam, 0 to 2 percent slopes	1.99	0.64	138	81	2w
705A	Buckhart silt loam, 0 to 2 percent slopes	1.64	0.53	142	96	1
TOTALS		309.74(*)	100%	123.52	76.93	2.52









(*) Total acres may differ in the second decimal compared to the sum of each acreage soil. This is due to a round error because we only show the acres of each soil with two decimal.

Capability Legend

Increased Limitations and Hazards

Decreased Adaptability and Freedom of Choice Users

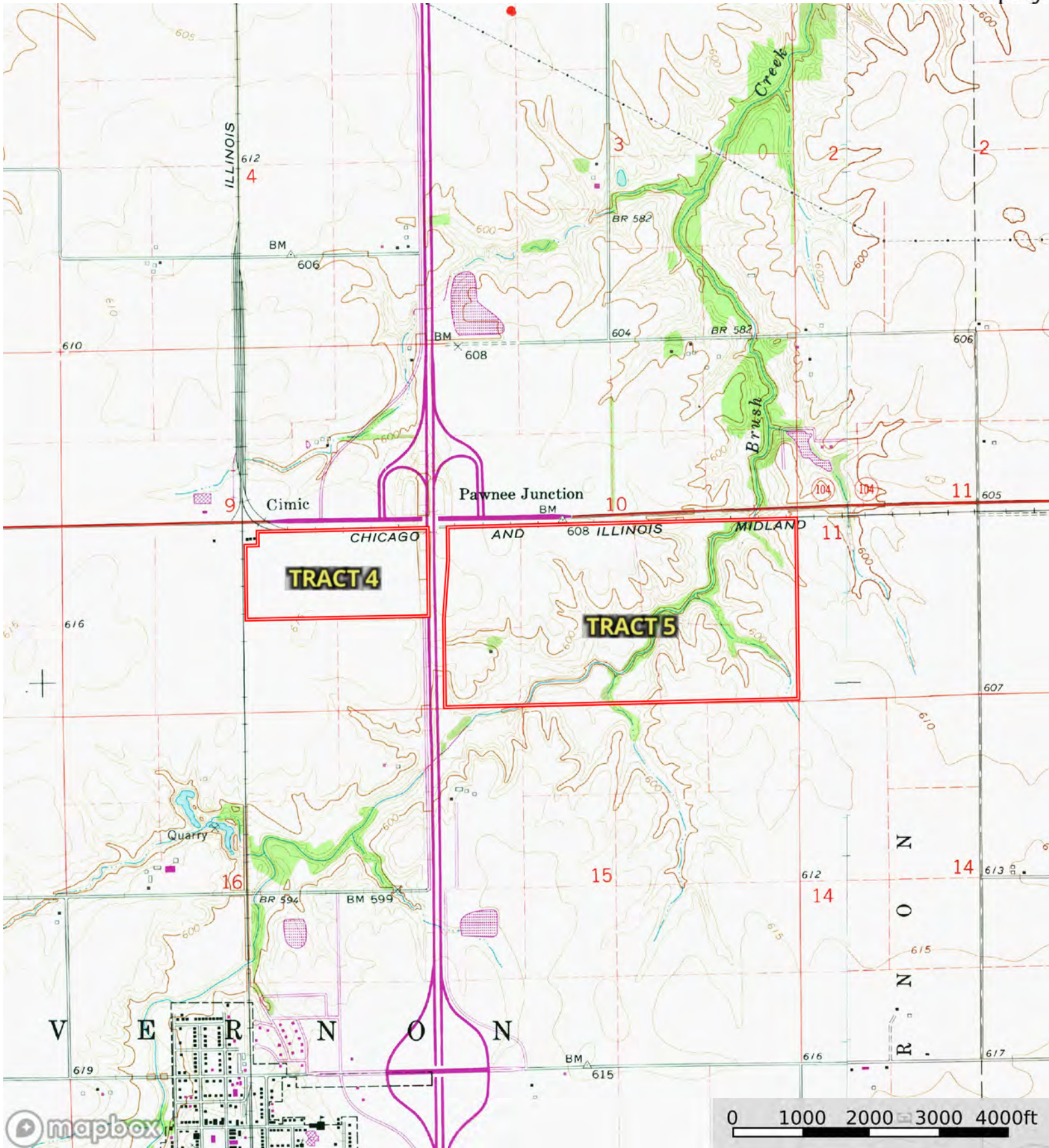
Land, Capability


								
	1	2	3	4	5	6	7	8
'Wild Life'	•	•	•	•	•	•	•	•
Forestry	•	•	•	•	•	•	•	
Limited	•	•	•	•	•	•	•	
Moderate	•	•	•	•	•	•		
Intense	•	•	•	•	•			
Limited	•	•	•	•				
Moderate	•	•	•					
Intense	•	•						
Very Intense	•							

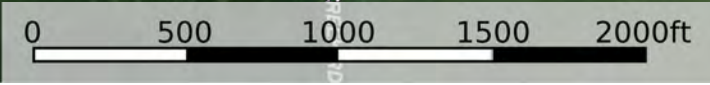
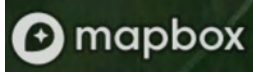
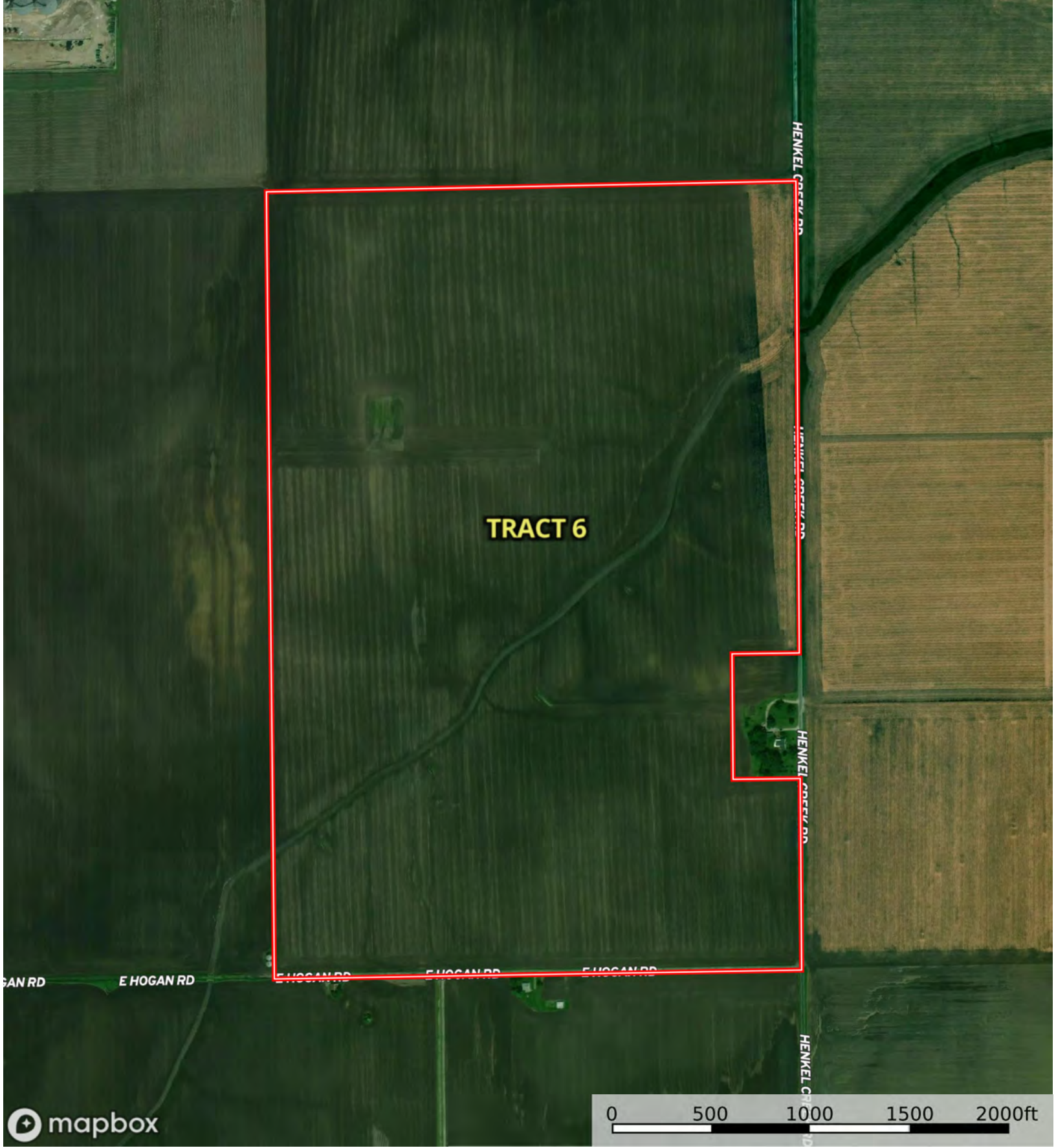
Grazing Cultivation

(c) climatic limitations (e) susceptibility to erosion

(s) soil limitations within the rooting zone (w) excess of water




 Boundary



 Boundary



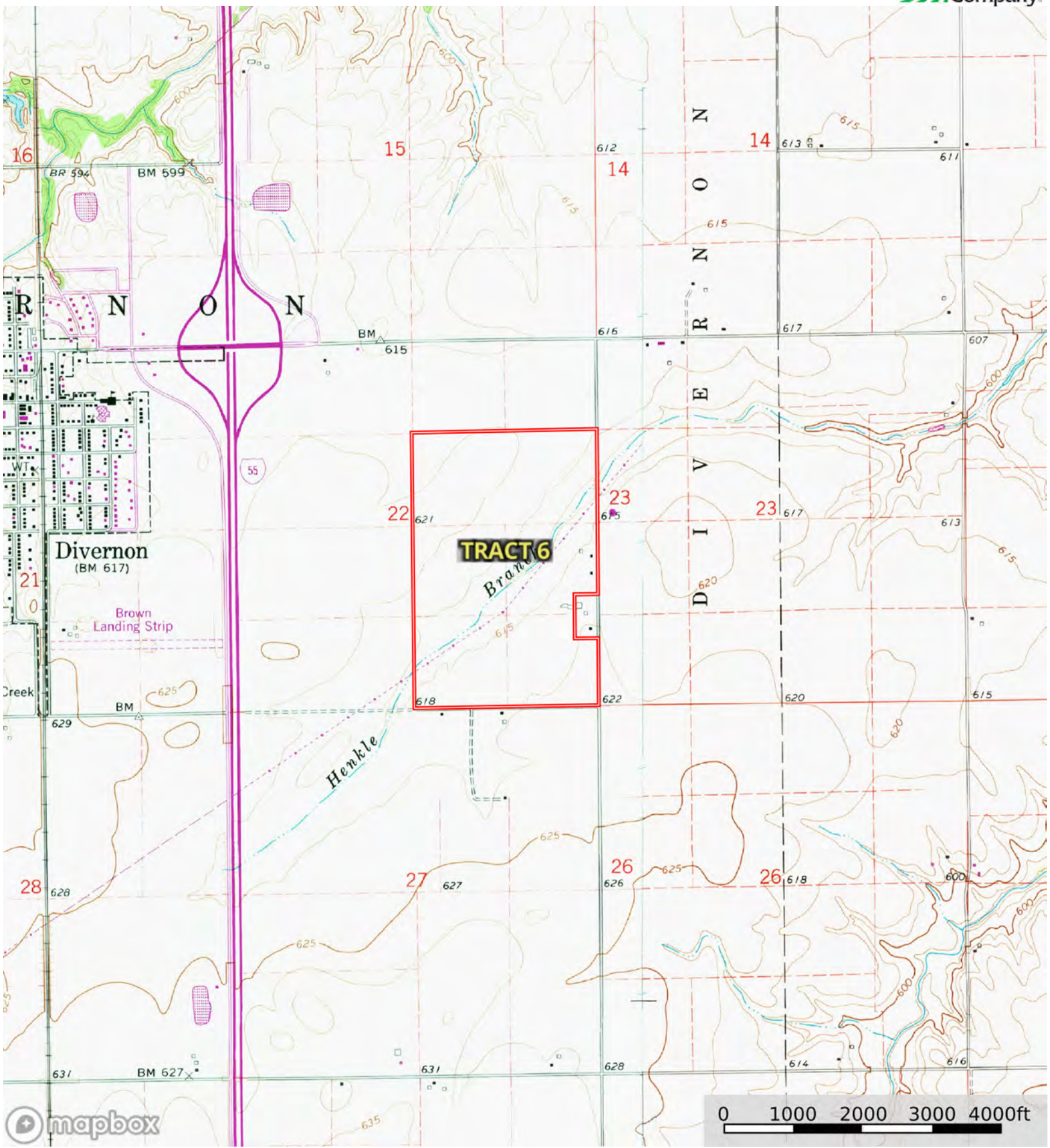
 Boundary

|  Boundary 240.22 ac

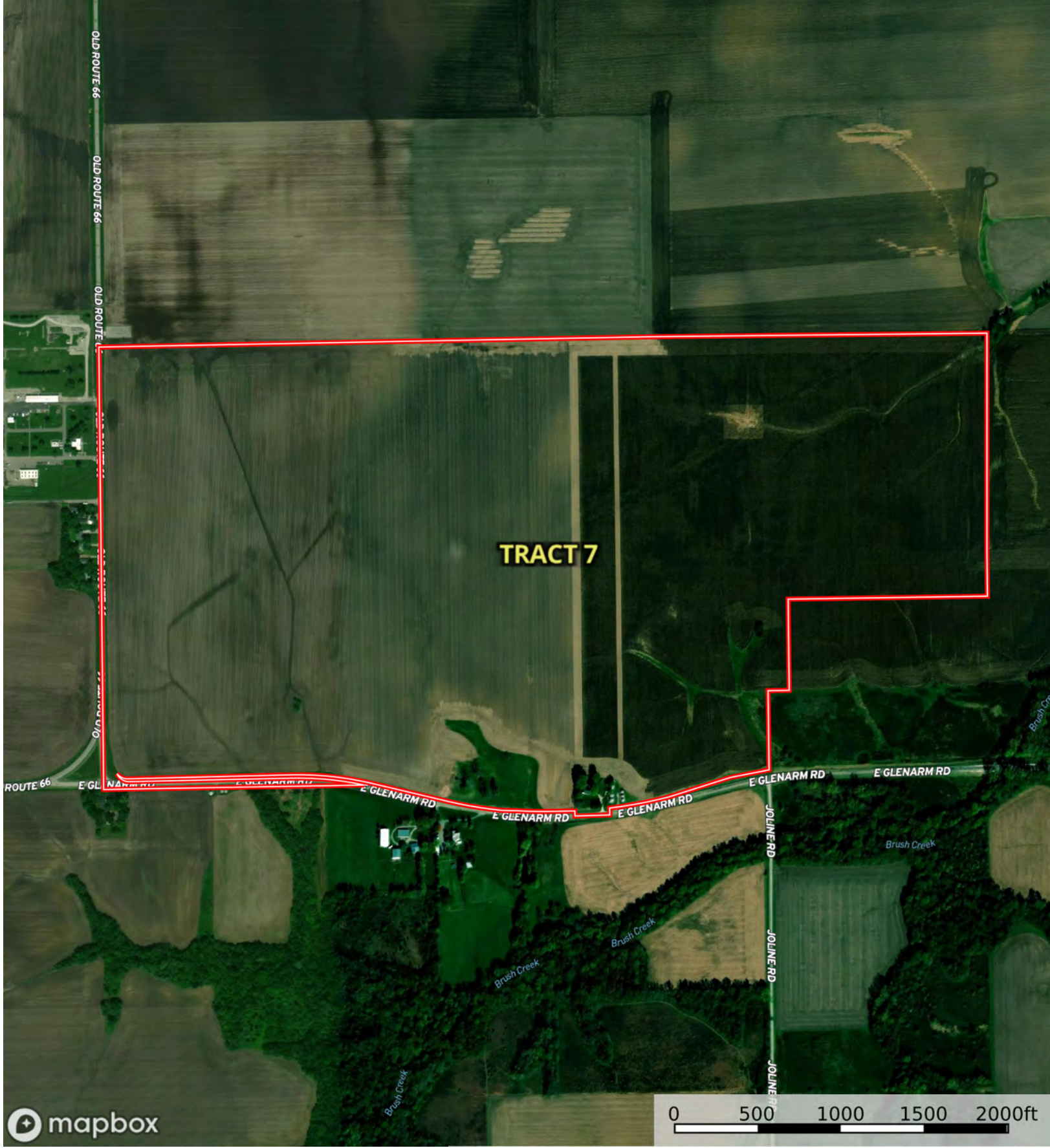
SOIL CODE	SOIL DESCRIPTION	ACRES	%	PI	NCCPI	CAP
43A	Ipava silt loam, 0 to 2 percent slopes	148.2	61.69	142	91	1
50A	Virden silty clay loam, 0 to 2 percent slopes	67.66	28.17	138	81	2w
127B	Harrison silt loam, 2 to 5 percent slopes	17.51	7.29	129	83	2e
46A	Herrick silt loam, 0 to 2 percent slopes	6.85	2.85	133	86	2w
TOTALS		240.2 2(*)	100%	139.6 7	87.46	1.38

(*) Total acres may differ in the second decimal compared to the sum of each acreage soil. This is due to a round error because we only show the acres of each soil with two decimal.

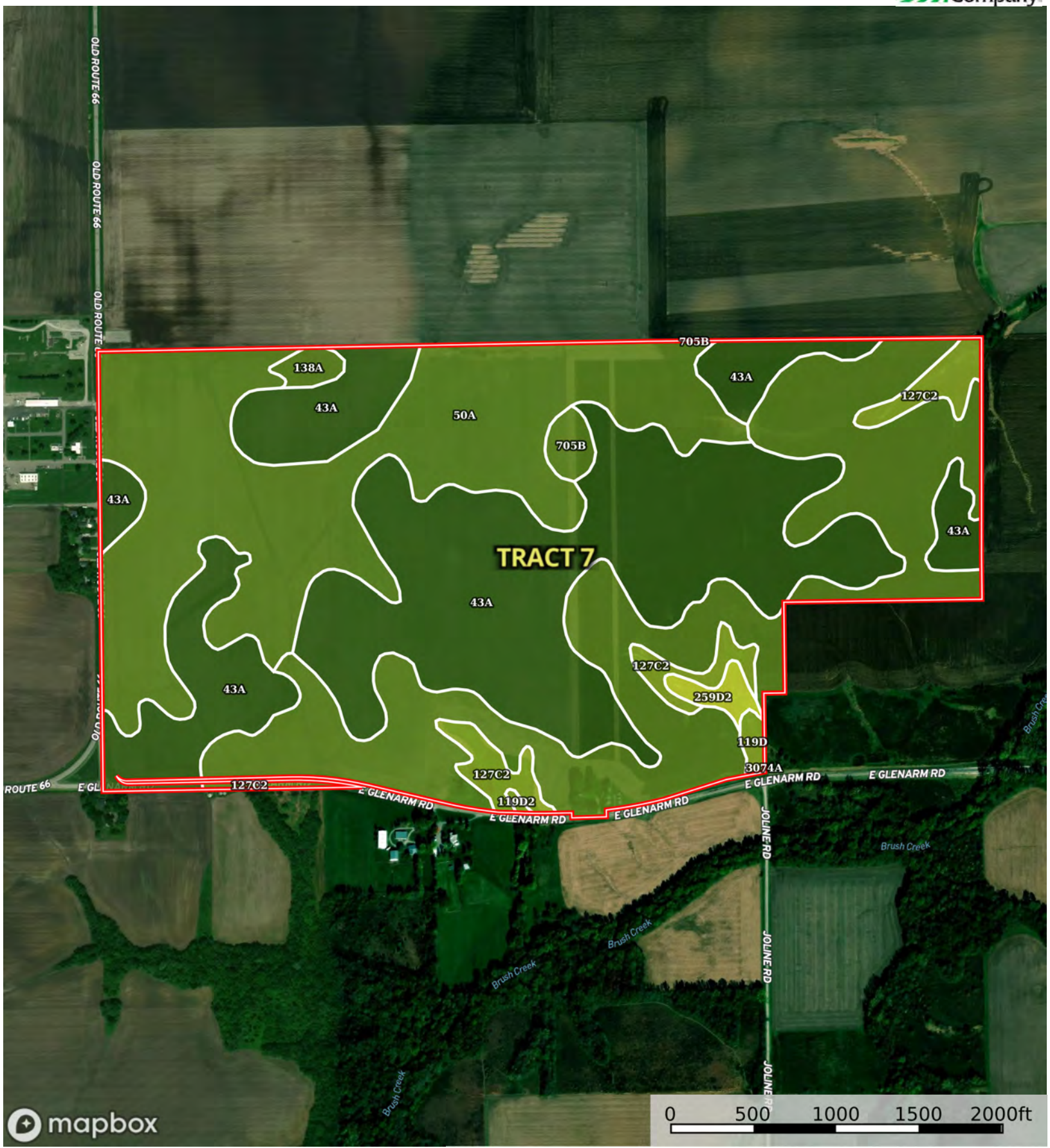





 Boundary



 Boundary



 Boundary

|  Boundary 300.41 ac

SOIL CODE	SOIL DESCRIPTION	ACRES	%	PI	NCCPI	CAP
43A	Ipava silt loam, 0 to 2 percent slopes	121.37	40.4	142	91	1
50A	Viriden silty clay loam, 0 to 2 percent slopes	84.16	28.01	138	81	2w
86B	Oscos silt loam, 2 to 5 percent slopes	76.85	25.58	138	92	2e
127C2	Harrison silt loam, 5 to 10 percent slopes, eroded	10.41	3.47	121	78	3e
705B	Buckhart silt loam, 2 to 5 percent slopes	2.31	0.77	141	93	2e
259D2	Assumption silt loam, 10 to 18 percent slopes, eroded	2.18	0.73	104	79	4e
138A	Shiloh silty clay loam, 0 to 2 percent slopes	1.78	0.59	130	70	2w
119D	Elco silt loam, 10 to 18 percent slopes	1.09	0.36	102	57	3e
119D2	Elco silt loam, 10 to 18 percent slopes, eroded	0.25	0.08	97	52	3e
3074A	Radford silt loam, 0 to 2 percent slopes, frequently flooded	0.01	0.0	136	72	3w
TOTALS		300.41(*)	100%	138.59	87.65	1.65









(*) Total acres may differ in the second decimal compared to the sum of each acreage soil. This is due to a round error because we only show the acres of each soil with two decimal.

Capability Legend

Increased Limitations and Hazards

Decreased Adaptability and Freedom of Choice Users

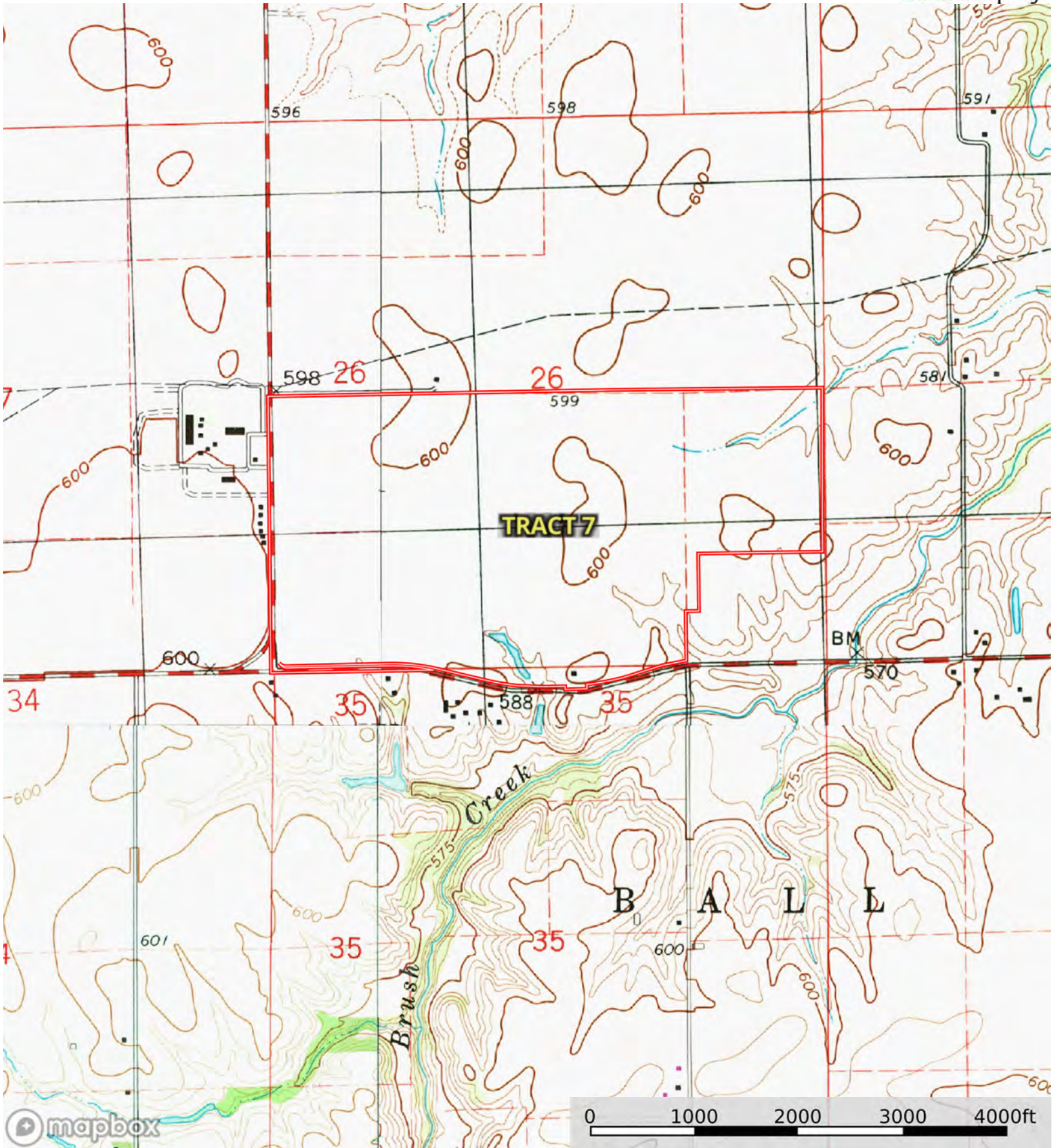
Land, Capability


								
	1	2	3	4	5	6	7	8
'Wild Life'	•	•	•	•	•	•	•	•
Forestry	•	•	•	•	•	•	•	
Limited	•	•	•	•	•	•	•	
Moderate	•	•	•	•	•	•		
Intense	•	•	•	•	•			
Limited	•	•	•	•				
Moderate	•	•	•					
Intense	•	•						
Very Intense	•							

Grazing Cultivation

(c) climatic limitations (e) susceptibility to erosion

(s) soil limitations within the rooting zone (w) excess of water



 Boundary