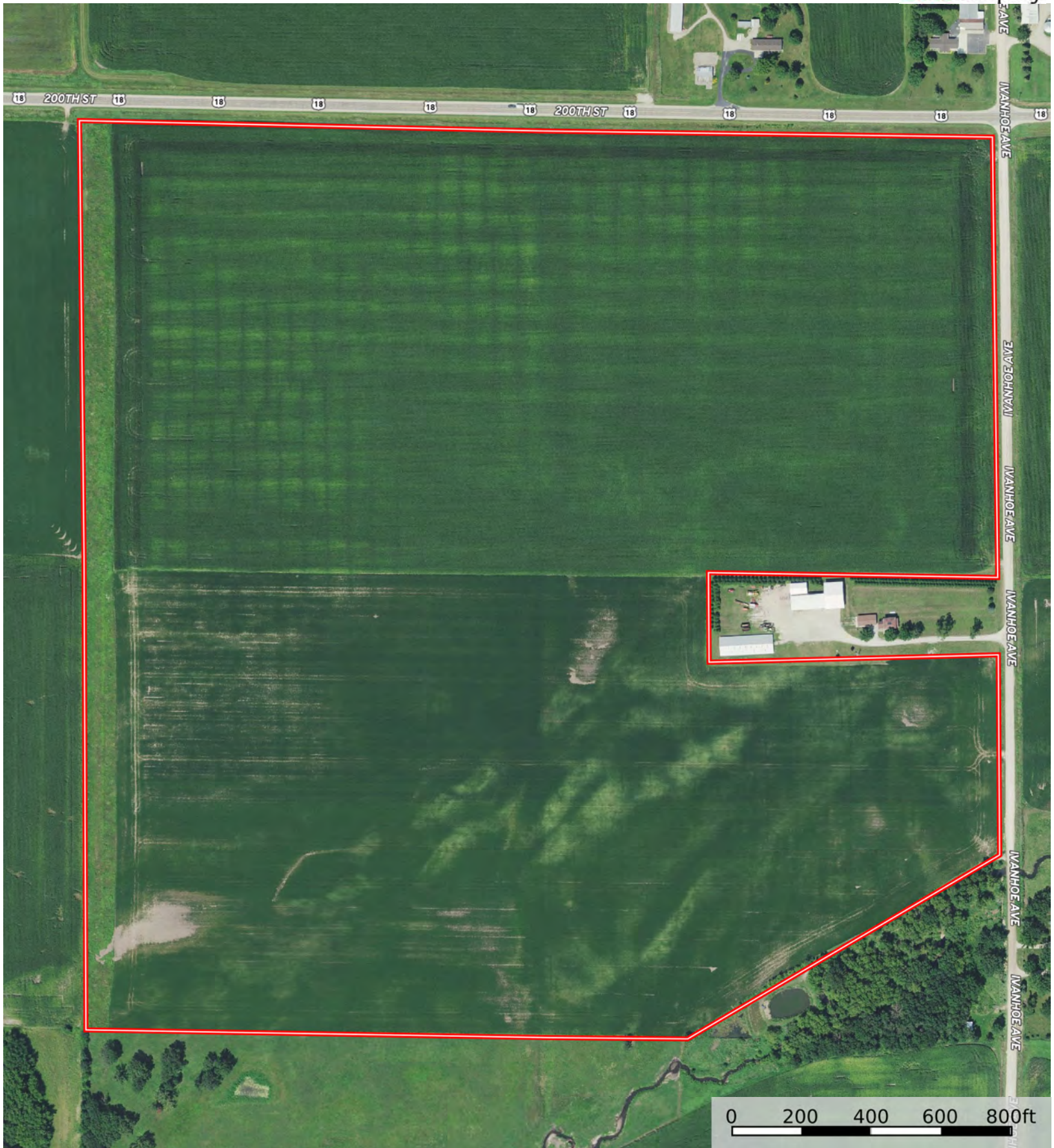


Boundary





Boundary





Boundary



| Boundary 146.93 ac

SOIL CODE	SOIL DESCRIPTION	ACRES	%	CSR2	CPI	NCCPI	CAP
471B	Oran loam, 2 to 5 percent slopes	45.79	31.17	74.0	0	80	1
391B	Clyde-Floyd complex, 1 to 4 percent slopes	38.21	26.01	87.0	0	89	2w
84	Clyde clay loam, 0 to 3 percent slopes	17.22	11.72	88.0	0	91	2w
626	Hayfield loam, 0 to 2 percent slopes, rarely flooded	13.53	9.21	53.0	0	81	2s
177	Saude loam, 0 to 2 percent slopes	9.41	6.4	60.0	0	79	2s
1152	Marshan clay loam, 0 to 2 percent slopes, rarely flooded	7.99	5.44	54.0	0	82	2w
777B	Wapsie loam, 2 to 5 percent slopes	5.62	3.83	50.0	0	66	2e
777	Wapsie loam, 0 to 2 percent slopes	3.83	2.61	55.0	0	67	2s
782B	Donnan loam, 2 to 5 percent slopes	2.4	1.63	43.0	0	71	2e
407B	Schley loam, 1 to 4 percent slopes	1.1	0.75	81.0	0	95	2w
585	Coland-Spillville complex, 0 to 2 percent slopes, occasionally flooded	0.83	0.56	70.0	0	77	2w
1226	Lawler loam, 0 to 2 percent slopes, rarely flooded	0.6	0.41	59.0	0	87	2s
198B	Floyd loam, 1 to 4 percent slopes	0.4	0.27	89.0	0	88	2w
TOTALS		146.9 3(*)	100%	73.2	-	82.9	1.69









(*) Total acres may differ in the second decimal compared to the sum of each acreage soil. This is due to a round error because we only show the acres of each soil with two decimal.

Capability Legend

Increased Limitations and Hazards

Decreased Adaptability and Freedom of Choice Users

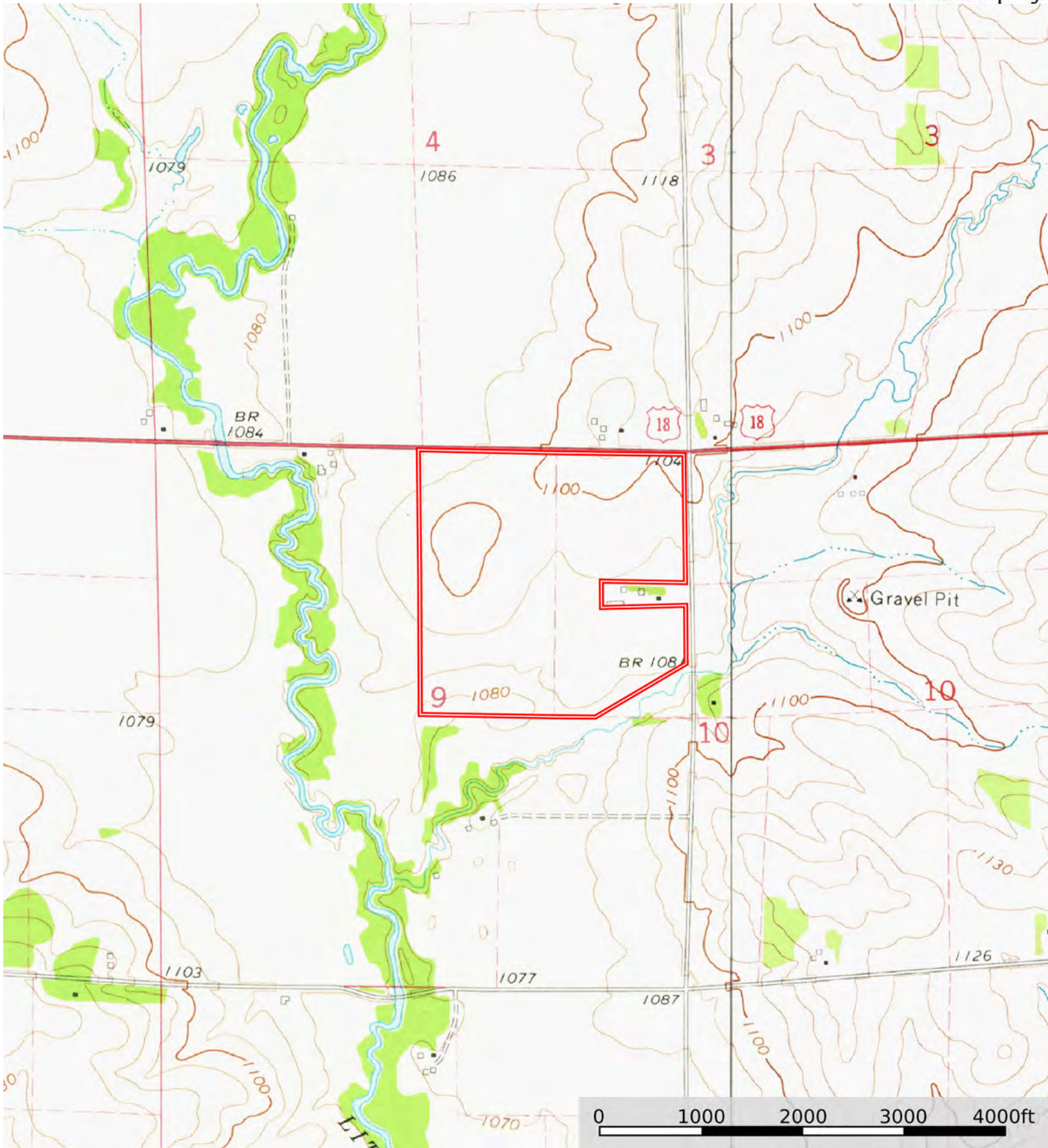
Land, Capability

								
	1	2	3	4	5	6	7	8
'Wild Life'	•	•	•	•	•	•	•	•
Forestry	•	•	•	•	•	•	•	
Limited	•	•	•	•	•	•	•	
Moderate	•	•	•	•	•	•		
Intense	•	•	•	•	•			
Limited	•	•	•	•				
Moderate	•	•	•					
Intense	•	•						
Very Intense	•							

Grazing Cultivation

(c) climatic limitations (e) susceptibility to erosion

(s) soil limitations within the rooting zone (w) excess of water



Boundary

