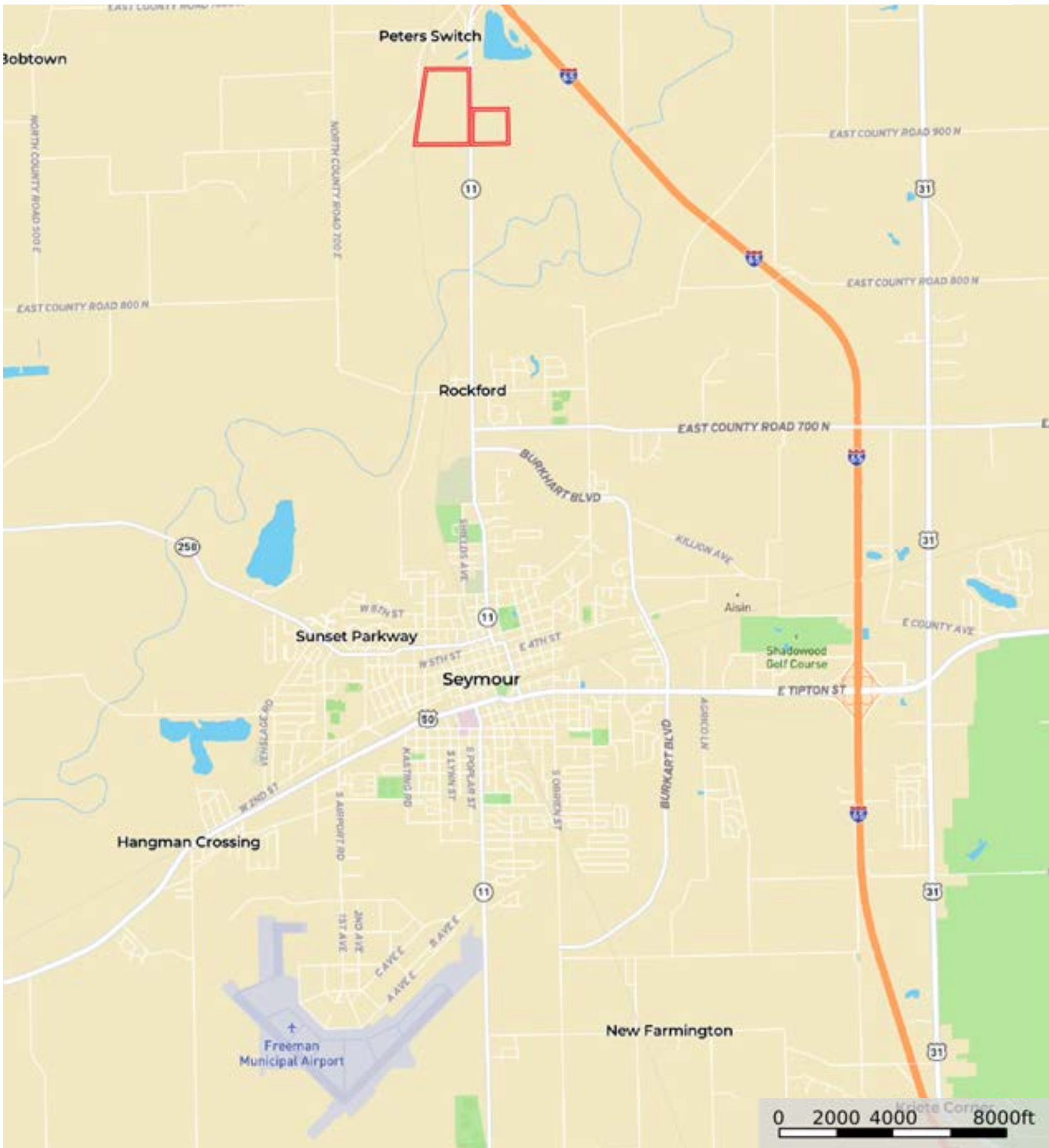


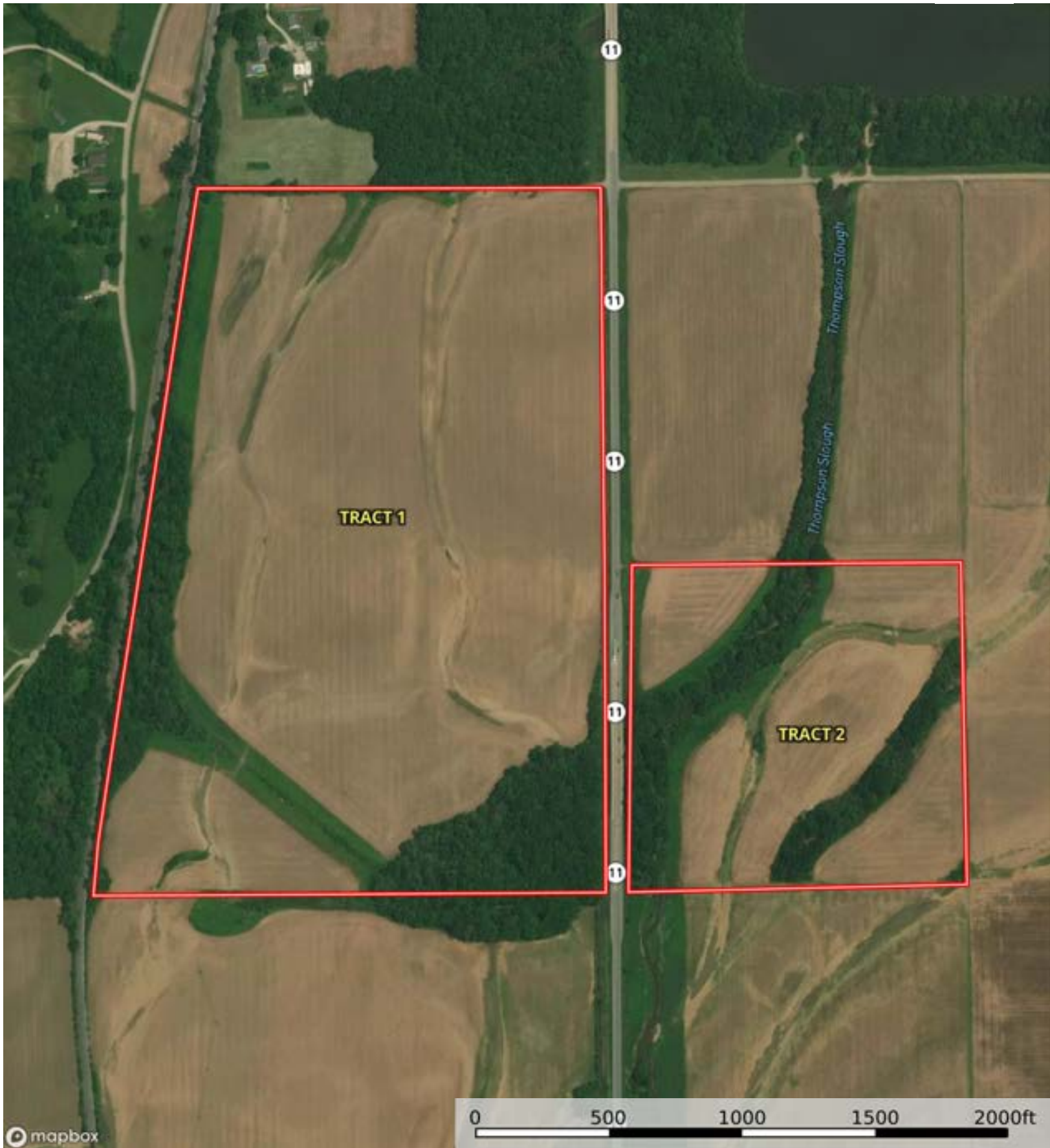
Barsi-Henke Farm

Jackson County, Indiana, 145 AC +/-



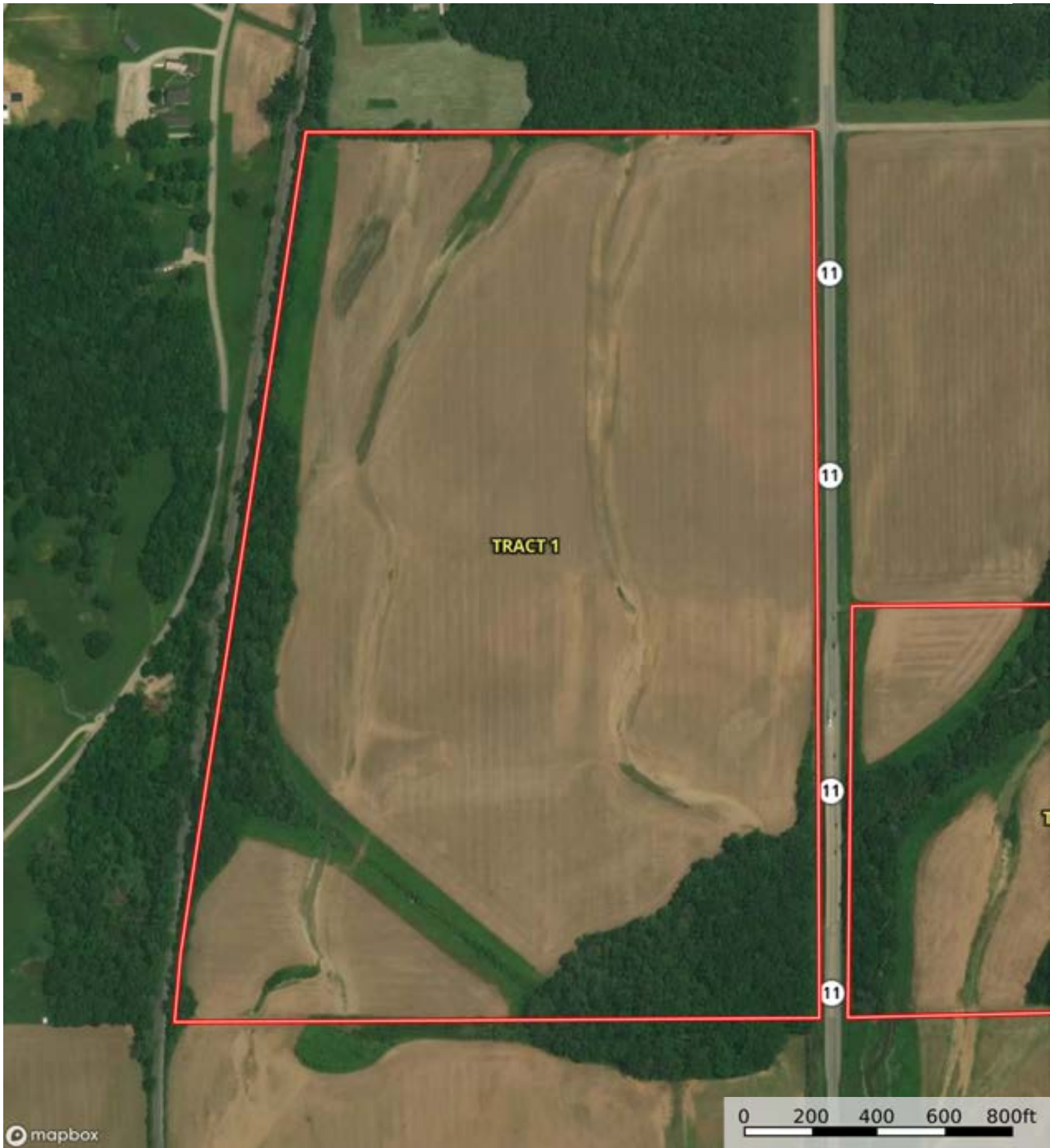
 Boundary

Barsi-Henke Farm
Jackson County, Indiana, 145 AC +/-



 Boundary

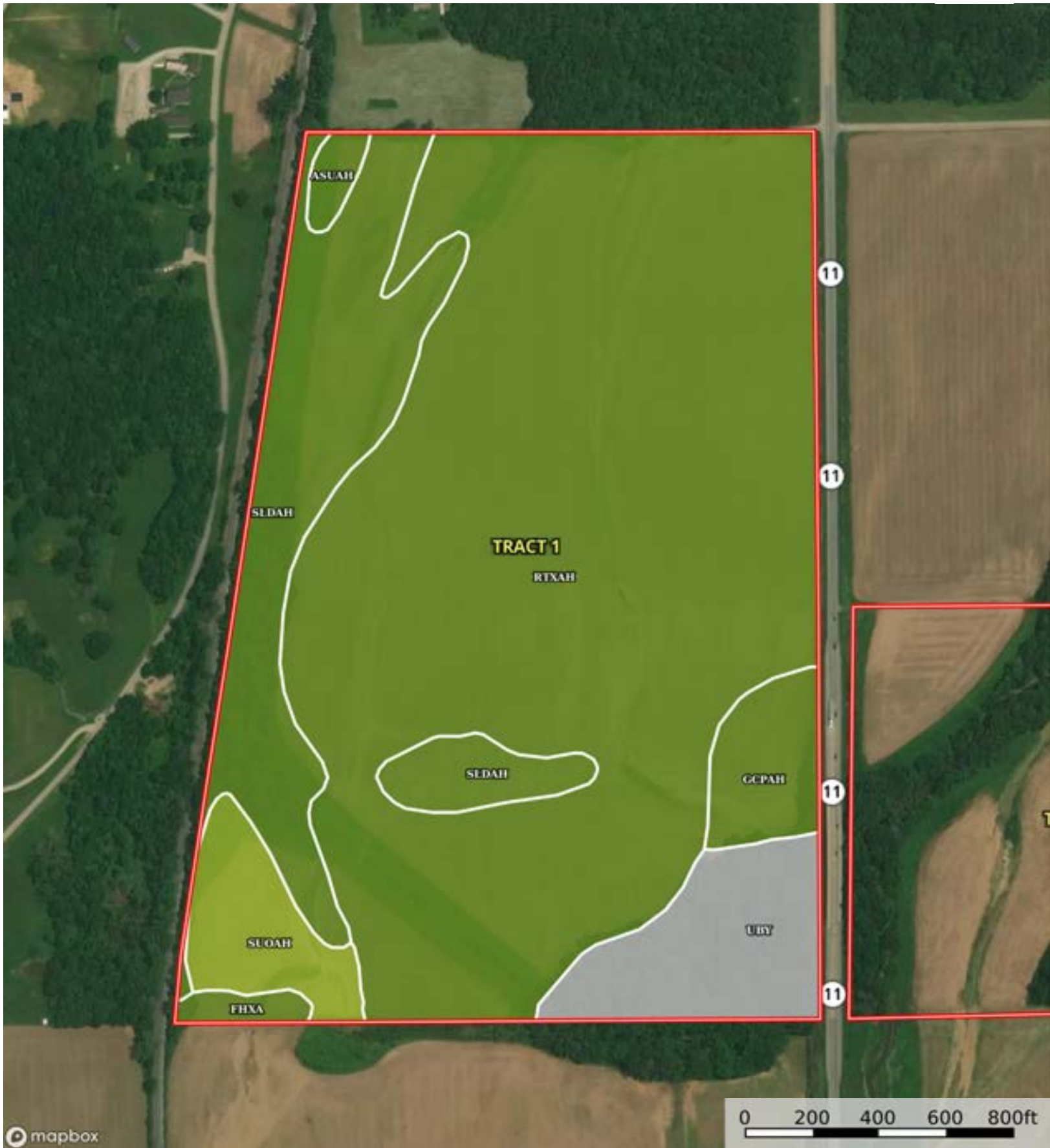
Barsi-Henke Farm
Jackson County, Indiana, 145 AC +/-



 Boundary

Barsi-Henke Farm

Jackson County, Indiana, 145 AC +/-



 Boundary

Boundary 106.07 ac

SOIL CODE	SOIL DESCRIPTION	ACRES	%	CPI	NCCPI	CAP
RtxAH	Rosburg silt loam, 0 to 2 percent slopes, frequently flooded, brief duration	71.9	67.79	0	62	2w
SldAH	Shoals silt loam, 0 to 2 percent slopes, frequently flooded, brief duration	17.38	16.39	0	81	2w
Uby	Udorthents, loamy	7.21	6.8	0	-	-
SuoAH	Stonelick fine sandy loam, 0 to 2 percent slopes, frequently flooded	4.49	4.23	0	54	3w
GcpAH	Genesee silt loam, 0 to 2 percent slopes, frequently flooded, brief duration	3.45	3.25	0	86	2w
AsuAH	Armiesburg silty clay loam, sandy substratum, 0 to 2 percent slopes, frequently flooded, brief duration	0.82	0.77	0	92	2w
FhxA	Fox-Ockley sandy loams, sandy substratums, 0 to 2 percent slopes	0.82	0.77	0	68	2s
TOTALS		106.07(*)	100%	-	61.62	2.05

(*) Total acres may differ in the second decimal compared to the sum of each acreage soil. This is due to a round error because we only show the acres of each soil with two decimal.



Barsi-Henke Farm
Jackson County, Indiana, 145 AC +/-




mapbox

Boundary

Barsi-Henke Farm
Jackson County, Indiana, 145 AC +/-



 Boundary

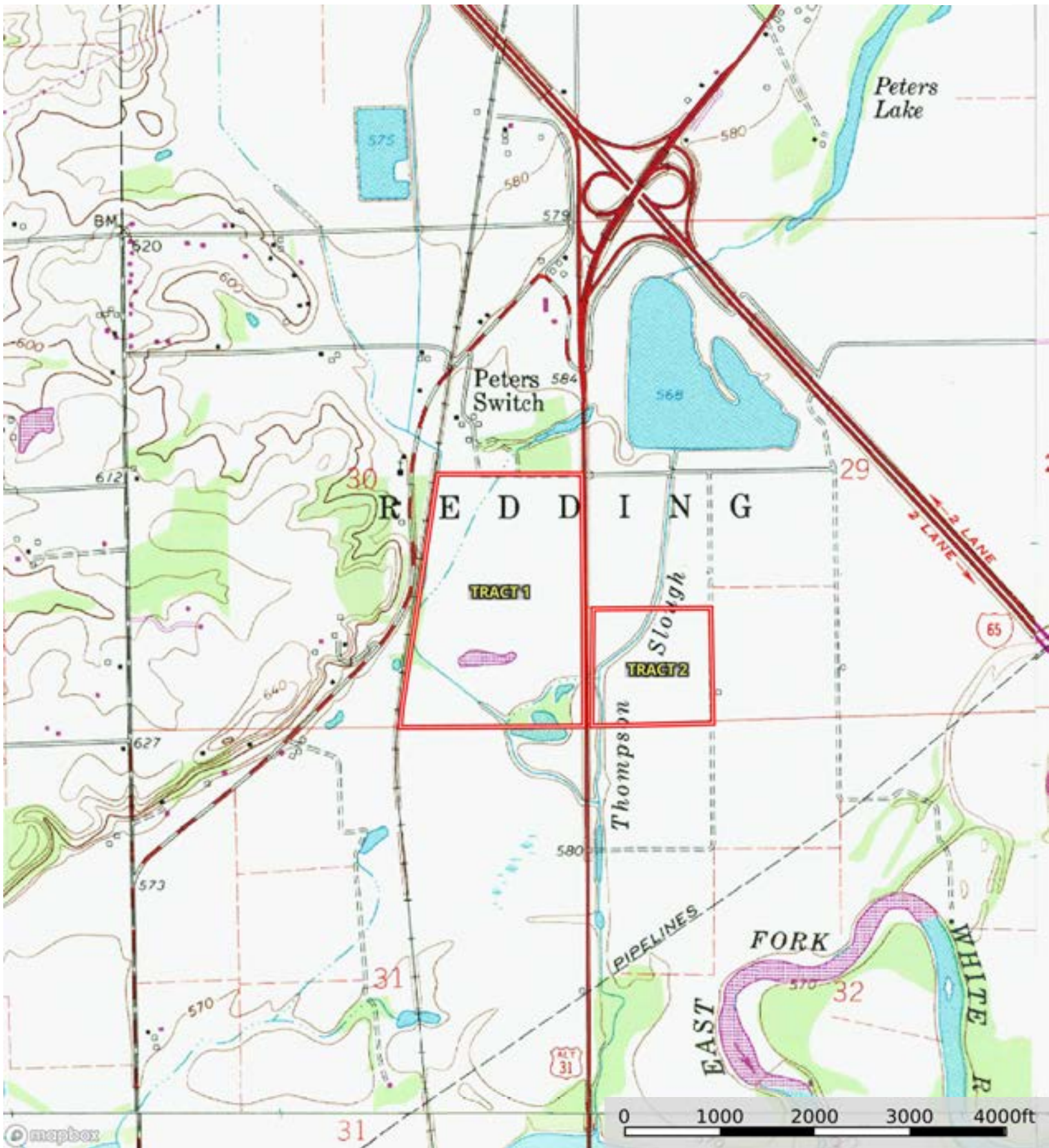
|  Boundary 35.4 ac

SOIL CODE	SOIL DESCRIPTION	ACRES	%	CPI	NCCPI	CAP
GcpAH	Genesee silt loam, 0 to 2 percent slopes, frequently flooded, brief duration	22.84	64.52	0	86	2w
AsuAH	Armiesburg silty clay loam, sandy substratum, 0 to 2 percent slopes, frequently flooded, brief duration	9.66	27.29	0	92	2w
RtxAH	Rosburg silt loam, 0 to 2 percent slopes, frequently flooded, brief duration	2.86	8.08	0	62	2w
FhxA	Fox-Ockley sandy loams, sandy substratums, 0 to 2 percent slopes	0.04	0.11	0	68	2s
TOTALS		35.4(*)	100%	-	85.68	2.0

(*) Total acres may differ in the second decimal compared to the sum of each acreage soil. This is due to a round error because we only show the acres of each soil with two decimal.



Barsi-Henke Farm
Jackson County, Indiana, 145 AC +/-



Boundary